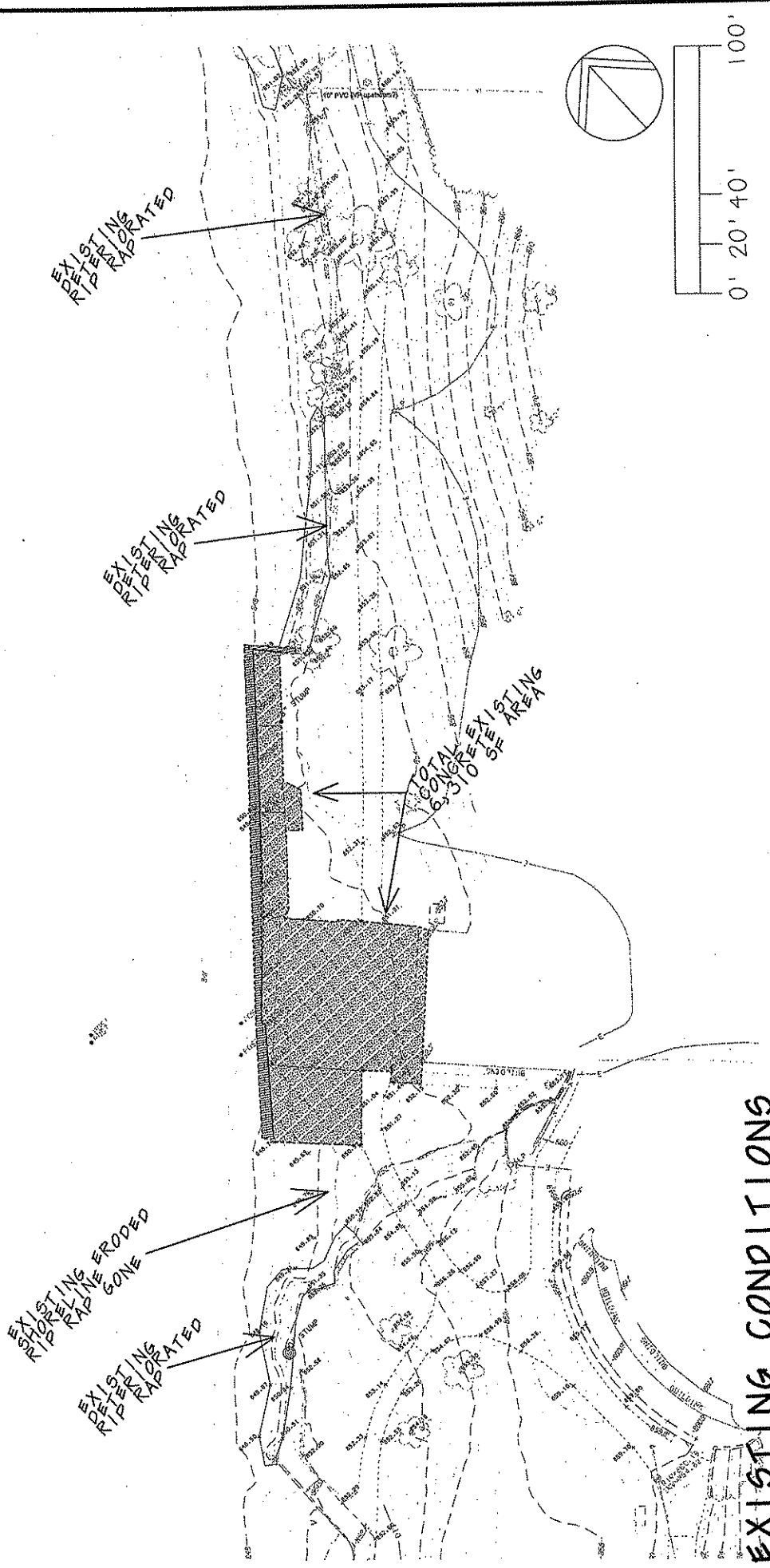
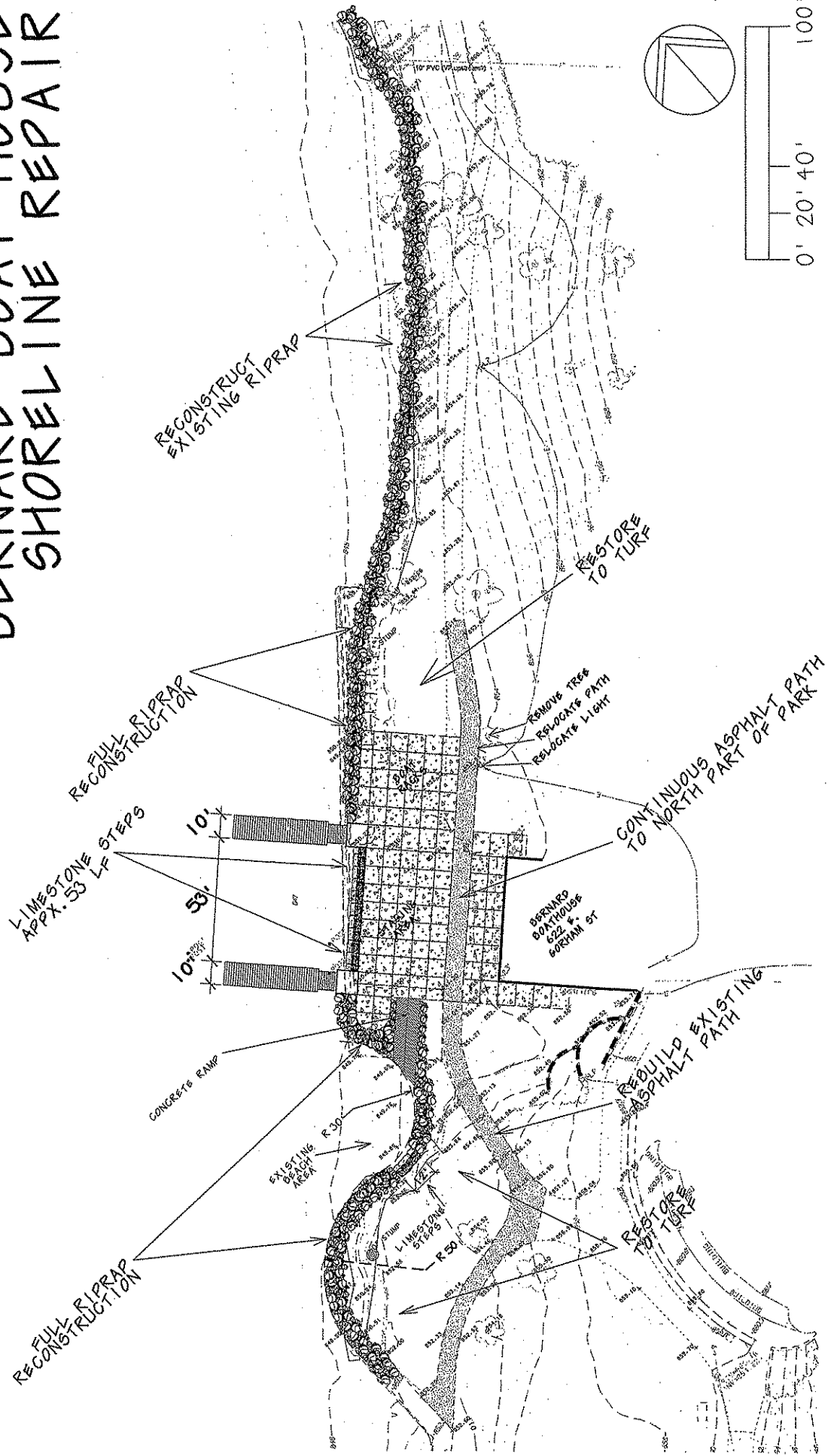


# JAMES MADISON PARK BERNARD BOAT HOUSE SHORELINE REPAIR

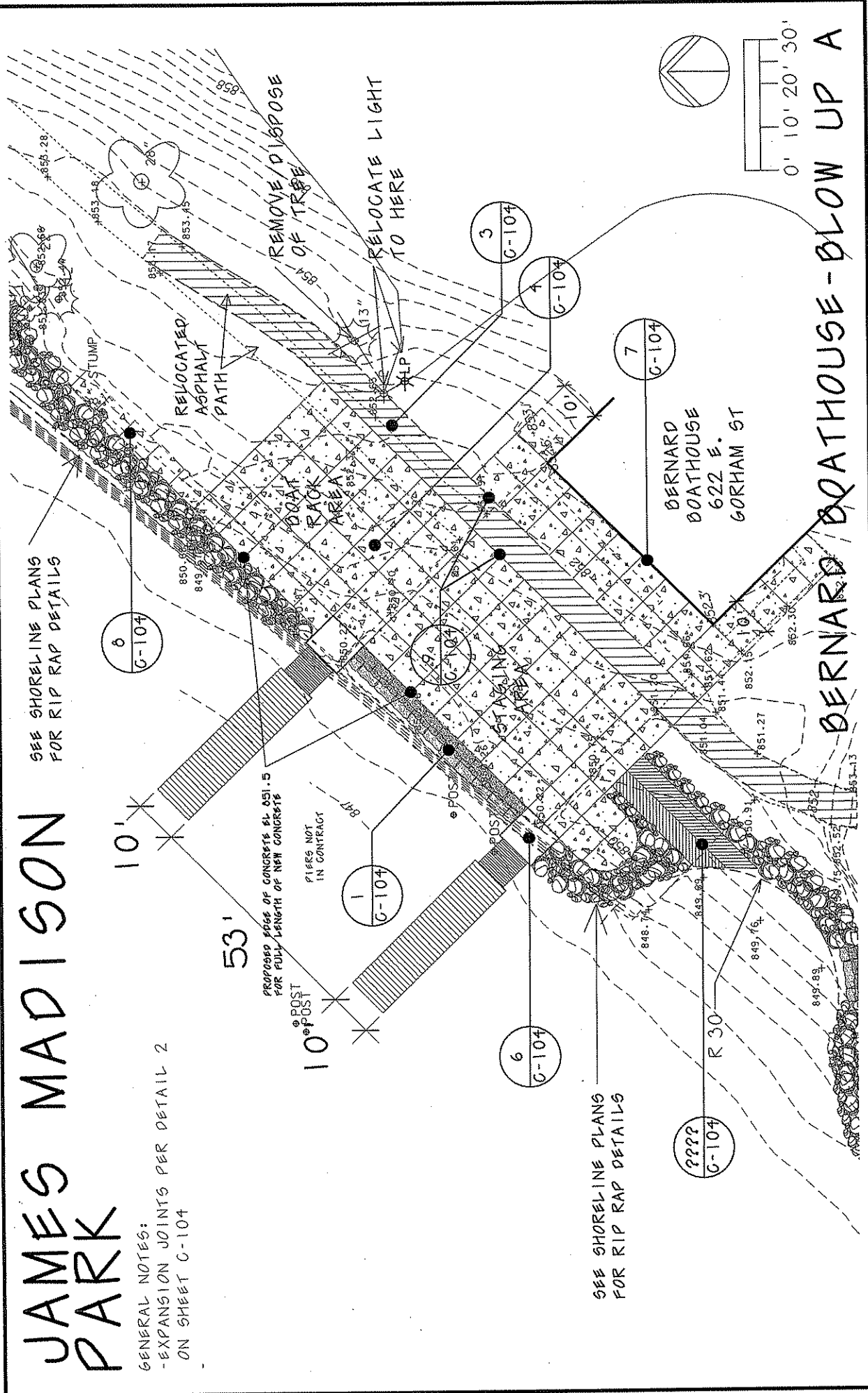


# JAMES MADISON PARK BERNARD BOAT HOUSE SHORELINE REPAIR



# JAMES MADISON PARK

GENERAL NOTES:  
 - EXPANSION JOINTS PER DETAIL 2  
 ON SHEET C-104



SEE SHORELINE PLANS FOR RIP RAP DETAILS

SEE SHORELINE PLANS FOR RIP RAP DETAILS

PROPOSED PILES OF CONCRETE #1 ASI.5 FOR FULL LENGTH OF NEW CONCRETE

PILES NOT IN CONTRACT

10' POST

53'

10'

REMOVE/DISPOSE OF TREE

RELOCATE LIGHT TO HERE

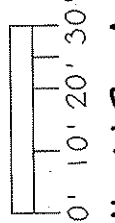
RELOCATED ASPHALT PATH

DOAT RACK AREA

STUMP

BERNARD BOATHOUSE  
 622 E.  
 GORHAM ST

BERNARD BOATHOUSE - BLOW UP A



6 C-104

1 C-104

6 C-104

???? C-104

3 C-104

4 C-104

7 C-104

8-7

POS

POS

R 30

848.74

849.16

849.89

850.91

851.27

851.62

852.30

853.13

853.28

853.75

854.18

854.65

855.12

855.59

856.06

856.53

857.00

857.47

857.94

858.41

858.88

859.35

859.82

860.29

860.76

861.23

861.70

862.17

862.64

863.11

863.58

864.05

864.52

864.99

865.46

865.93

866.40

866.87

867.34

867.81

868.28

868.75

869.22

869.69

870.16

870.63

871.10

871.57

872.04

872.51

872.98

873.45

873.92

874.39

874.86

875.33

875.80

876.27

876.74

877.21

877.68

878.15

878.62

879.09

879.56

880.03

880.50

880.97

881.44

881.91

882.38

882.85

883.32

883.79

884.26

884.73

885.20

885.67

886.14

886.61

887.08

887.55

888.02

888.49

888.96

889.43

889.90

890.37

890.84

891.31

891.78

892.25

892.72

893.19

893.66

894.13

894.60

895.07

895.54

896.01

896.48

896.95

897.42

897.89

898.36

898.83

899.30

899.77

900.24

900.71

901.18

901.65

902.12

902.59

903.06

903.53

904.00

904.47

904.94

905.41

905.88

906.35

906.82

907.29

907.76

908.23

908.70

909.17

909.64

910.11

910.58

911.05

911.52

911.99

912.46

912.93

913.40

913.87

914.34

914.81

915.28

915.75

916.22

916.69

917.16

917.63

918.10

918.57

919.04

919.51

920.08

920.55

921.02

921.49

921.96

922.43

922.90

923.37

923.84

924.31

924.78

925.25

925.72

926.19

926.66

927.13

927.60

928.07

928.54

929.01

929.48

929.95

930.42

930.89

931.36

931.83

932.30

932.77

933.24

933.71

934.18

934.65

935.12

935.59

936.06

936.53

937.00

937.47

937.94



# DESIGN DEVELOPMENT PLAN

original design from 1997  
2009 updates in red - S.W. 10-27-09

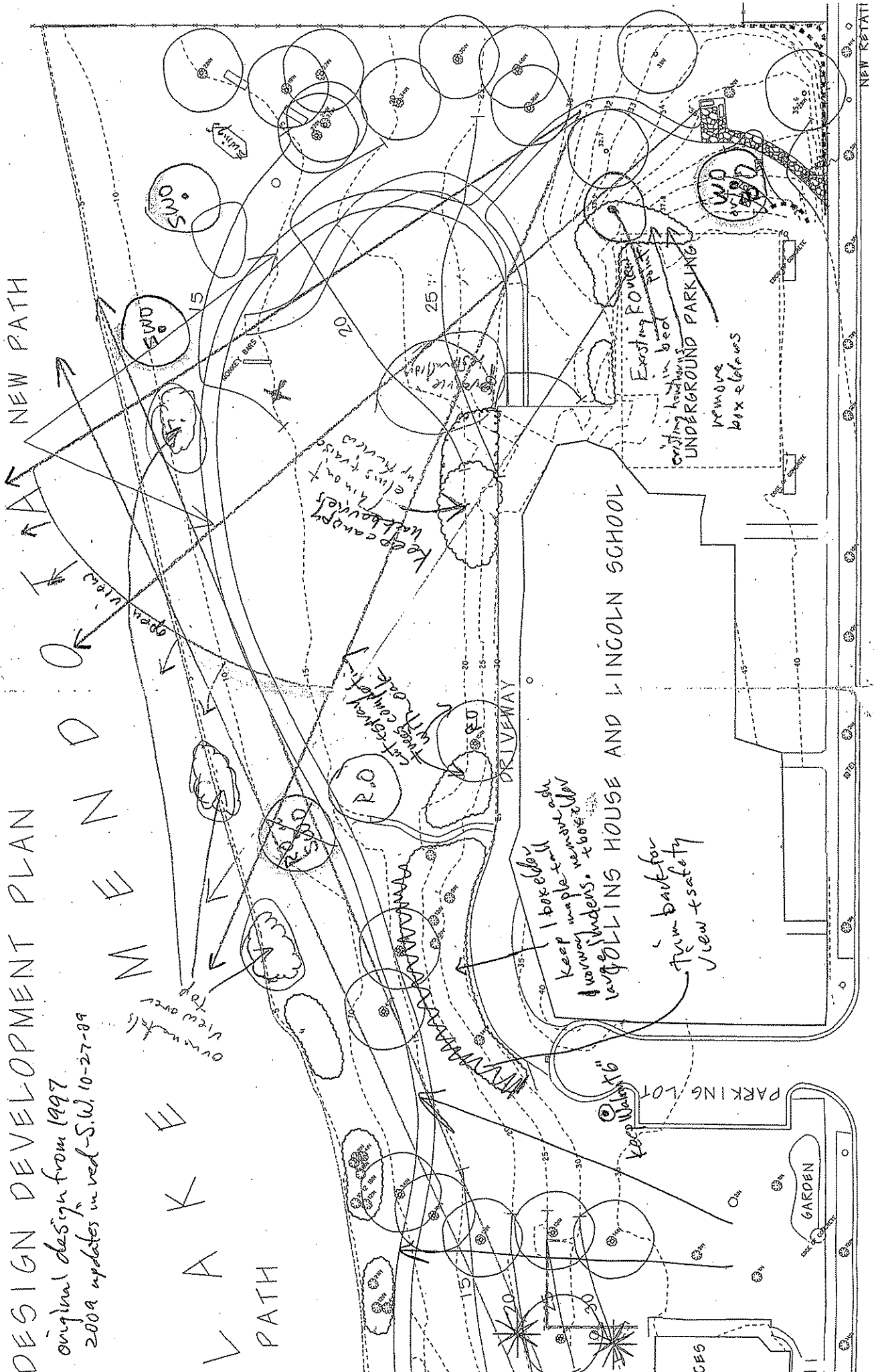
NEW PATH

NEW PATH

over water  
view over  
lake

over water  
view over  
lake

LAKESIDE PATH



# 997 CONSTRUCTION - A PART OF THE 1994 DESIGN DEVELOPMENT

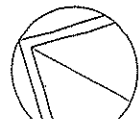
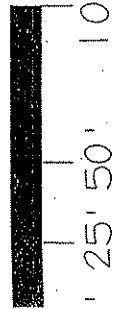
original design from 1997

2009 updates in red. - S.W. 10-27-09

important view over  
top of boat house

important view over  
top of boat house

VIEWERS  
AREAS TO BE  
REGRADED



A  
K  
E  
M

important view corridor  
raise canopy of garage +  
improve view corridor  
under canopy

NEW PATH  
brush: boxelder  
blackberry, Hawthorn

brush  
small oak

Trim bed  
for view  
& safety  
selects with  
candy trees  
for COLLIN  
box & ideas.

