

Blink Proposals

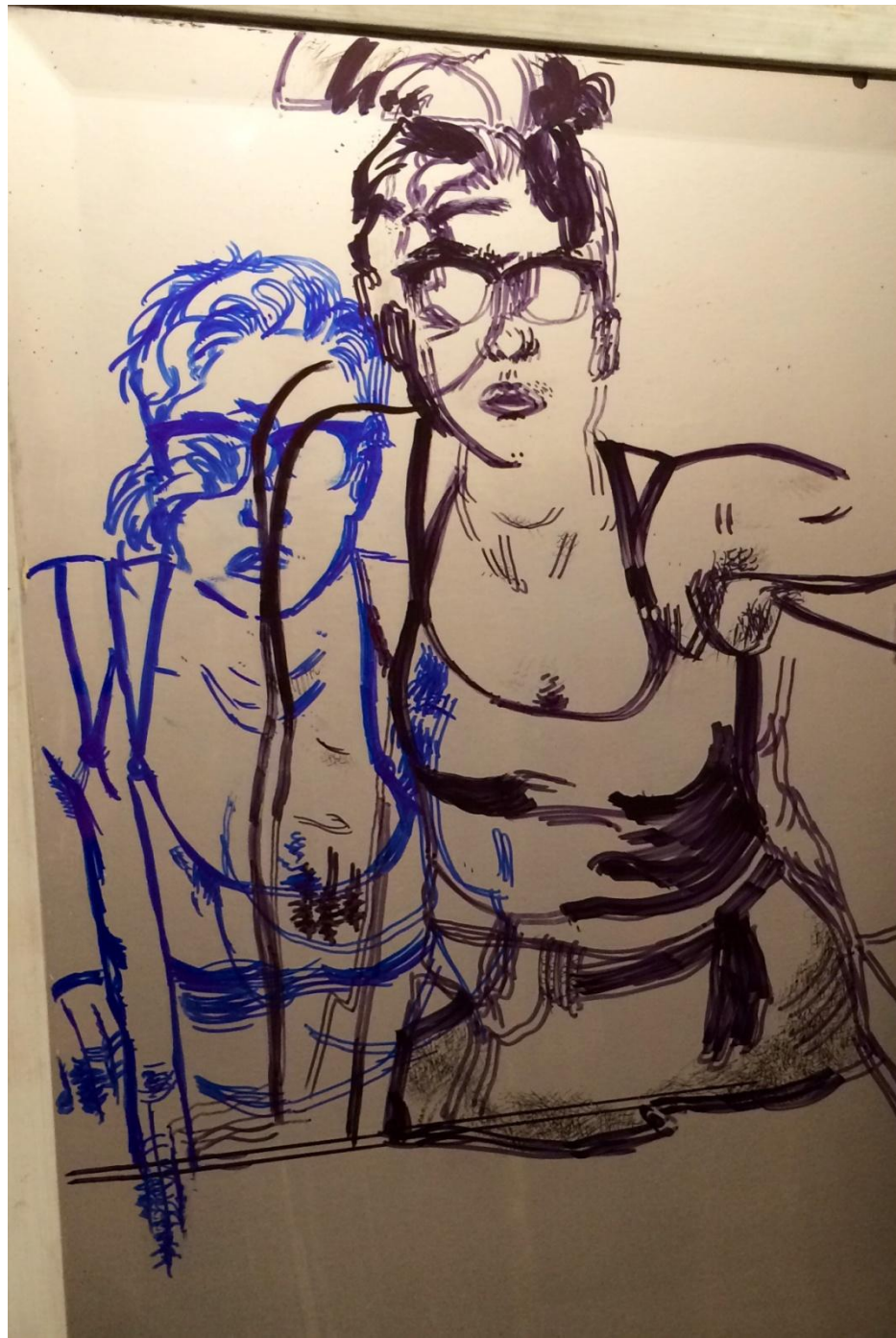
February 2015

Public Mirror Portraits

Proposed by Alaura Seidl

- **Proposing:** a city-wide performative project in which youth (particularly LGBT youth, youth of color, trans youth and young women – especially those who have experienced housing insecurity) will draw self portraits on mirrors in public and semi-public bathrooms.
- **Date of event:** April 2015 (Date TBD)
- **Budget:** \$1499.00
 - Markers (\$75), Bus Passes(\$74), Insurance(\$350), Lead Artist (\$1000)











Part of the Landscape Bench

Proposed by Aaron Laux

- **Proposal:** Functional art work in public space. Audience sits and talks together. Biophilic design draws audience in and provides center of interest.
- **Timeline**
 - Install by April 1st, De-install by Oct 1
- **Budget:** \$1500.00
 - Materials (\$699), Labor (\$801.00)



















Dear Madison

Proposed by Christine Holm

- **Proposing:** Four visual artists from the community will make one postcard each representing Madison. In April hold two poetry workshops with 15 students per session in community settings. At the end of each session, students will get a pack of four pre-stamped postcards with the assignment to send at least one back to Holm within one week of class that includes an epistolary poem to Madison. The returned postcards will be photocopied and pasted on public flier boards.
- **Timeline:** Workshops in April, install date and duration of public postings unspecified.
- **Budget:** \$1445.00 (commission of postcards \$150/ea*4 artists, reading packets for 30 students \$120 total, paper and printing for enlarged images \$200, Artist stipend \$400)

Image 1: This is a photopolymer print of an image found in a medical textbook. The project was called *Cordis Anathomiam*, a pamphlet-structured book which incorporated verifiable anatomy with interpretive elements of 'where' a poem, a feeling, might live inside the body.

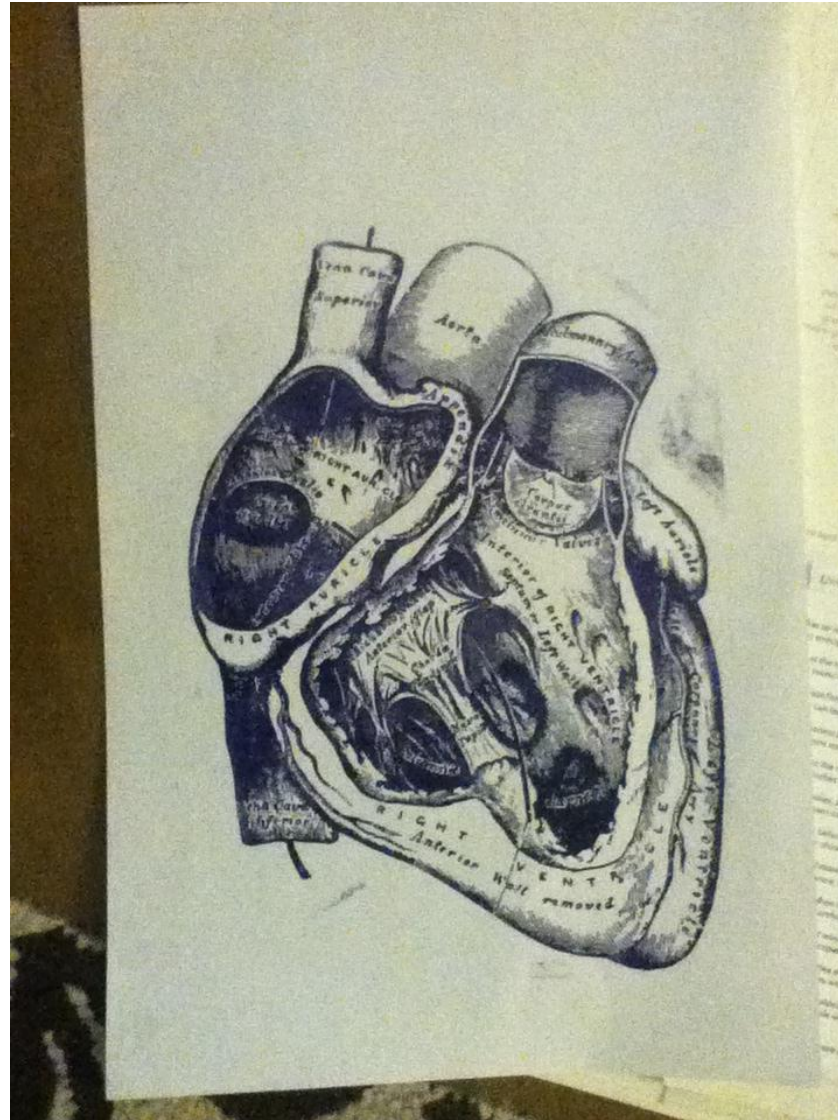


Image 2: This page of *Cordis Anathomiam* shows the incorporation of language and image. Much of the work of *Dear Madison* relies not only on collaboration of individuals, but also on different mediums coming together. The images on the postcards created for *Dear Madison* will both inspire and answer to the epistolary poems written on their reverse sides. Similarly, the project, as shown in the below, will take an everyday structure and make it artwork.

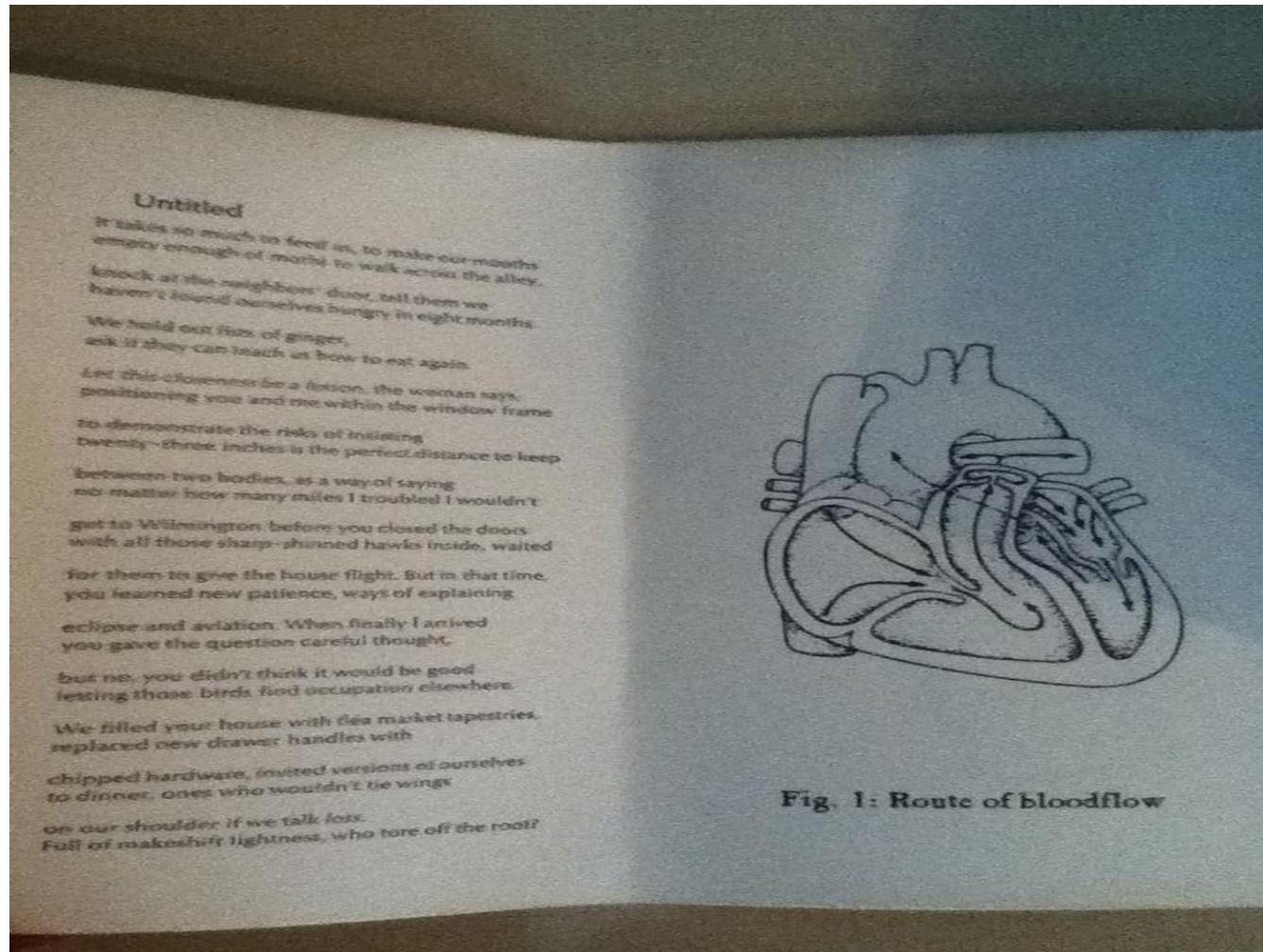
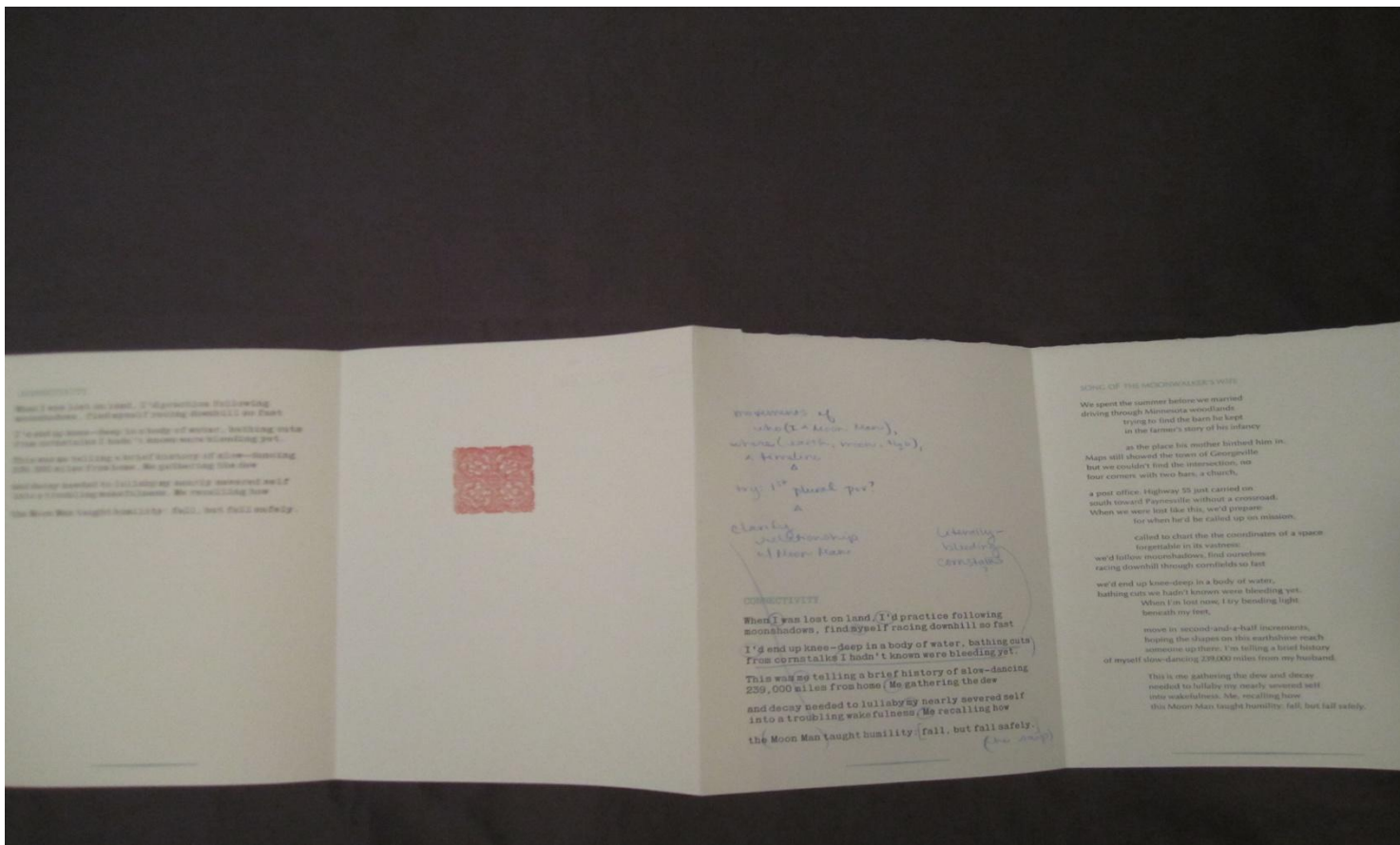


Image 3: Part of a project called *making a poem (i)*, this image shows my interest in process. While much of the printing is clean-lined and crisp, an integral part in showing the heavy revision involved in writing poetry is the hand-written material, the ideas and edits. *Dear Madison* relies on a similar element of the printed or 'professional' being interacted with. In such a case, the postcard is revised from a commodity piece of artwork to a sendable, personal, everyday item.



municipal silhouette project

Proposed by Gabe Strader-Brown

- **Proposing:** 7-10 sculptural bike racks. “My project combines formal craft with urban function in the form of recognizable objects.” Objects such as transformer boxes, post boxes, fire hydrants are extremely common and absorbed into our visual idea of what an urban space looks like, and yet they are seemingly forgettable and do not stand out. The objective of this proposed venture is to replicate these objects into what I refer to as “municipal silhouettes.”
- **Date:** unspecified
- **Budget:** \$1300.00 (Production of steel sculptures: \$900; Installation cost of pouring concrete and faceting the objects: \$400)









Past Work Samples



Iconic, Conventional
2008
Welded steel



Auto Canyon
2012
Welded steel, auto body paint



Capitol
2013
CNC cut plywood



LUX R-8815
2013
CNC cut plywood