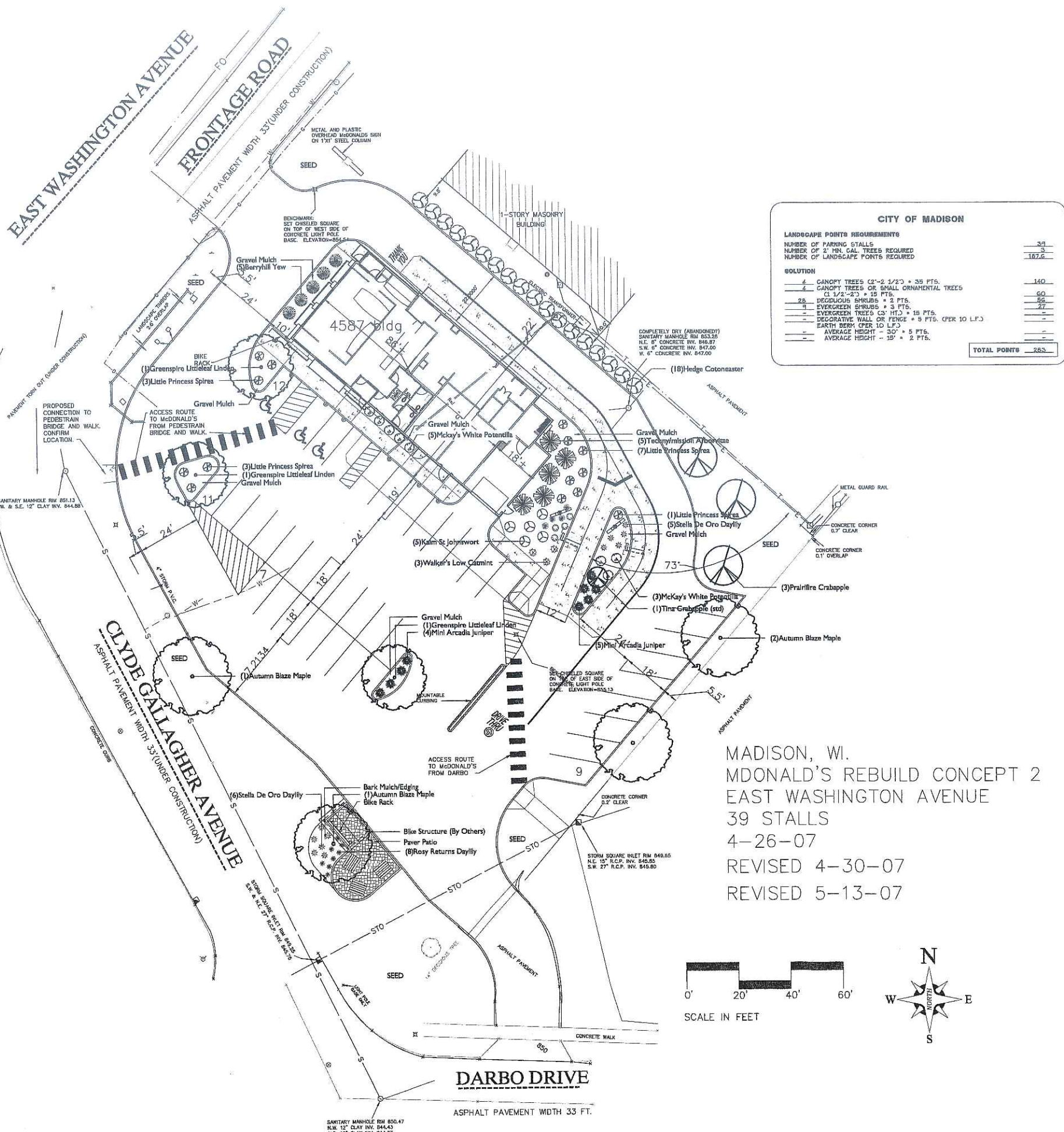




LANDSCAPE ARCHITECTS
LANDSCAPE CONTRACTORS

2830 PARKER STREET
P.O. BOX 620330
MIDDLETON, WI 53562-0330

TEL (608) 836-7041
FAX (608) 831-6266



CITY OF MADISON

LANDSCAPE POINTS REQUIREMENTS

NUMBER OF PARKING STALLS	39
NUMBER OF 2" DIA. GAL. TREES REQUIRED	3
NUMBER OF LANDSCAPE POINTS REQUIRED	187.6

SOLUTION

4 CANOPY TREES (2'-2 1/2" x 25 FT.)	140
2 CANOPY TREES OR SMALL ORNAMENTAL TREES (1 1/2"-2" x 15 FT.)	60
28 DECIDUOUS SHRUBS x 2 FT.	56
9 EVERGREEN SHRUBS x 3 FT.	27
EVERGREEN TREES (3' HT.) x 15 FT.	-
DECORATIVE WALL OR FENCE x 5 FT. (PER 10 LF.)	-
EARTH BERM (PER 10 LF.)	-
AVERAGE HEIGHT - 30' x 5 FT.	-
AVERAGE HEIGHT - 15' x 2 FT.	-
TOTAL POINTS	283

Plant Material List

Broadleaf Deciduous		
Quantity	Scientific Name	Planting Size
4	Autumn Blaze Maple	2 1/2" B&B
3	Prairiefire Crabapple	1 1/2" B&B
3	Greenspire Littleleaf Linden	2 1/2" B&B
1	Tina Crabapple (std)	2 1/2" B&B
Conifer Evergreen		
Quantity	Scientific Name	Planting Size
5	Berryhill Yew	15" B&B
9	Mini Arcadia Juniper	#3 CONT.
5	Techy/mission Arborvitae	4" B&B
Perennial		
Quantity	Scientific Name	Planting Size
4	Blue Oat Grass	#1 CONT.
4	Palace Purple Coral Bells	#1 CONT.
8	Rosy Returns Daylily	#1 CONT.
11	Stella De Oro Daylily	#1 CONT.
3	Walker's Low Catmint	#1 CONT.
Shrub		
Quantity	Scientific Name	Planting Size
18	Hedge Cotoneaster	#7 CONT.
5	Kalm St. Johnswort	#3 CONT.
14	Little Princess Spirea	#2 CONT.
8	Mckay's White Potentilla	#2 CONT.

GENERAL NOTES

- A) Areas labeled "Bark Mulch" to receive a mixture of hardwood shredded bark mulch spread to a 3" depth over pre-emergent.
- B) Individual trees (and shrub groupings) found along perimeter of property as well as those found within lawn areas to receive bark rings (and bark beds) consisting of a mixture of hardwood shredded bark mulch spread to a minimum 3" depth (3' wide beds for shrub groupings).
- C) "Plastic Edging" to be Valley View Black Diamond Edging or equivalent.
- D) Areas labeled "Gravel Mulch" to receive 1-1/2" washed gravel spread to a 3" depth over fabric weed barrier.
- E) "Seed" areas shall be finish-graded and seeded at a rate of 4 lbs. per 1,000 sq. ft.
- F) Areas labeled "Seed" shall receive a mixture of the following types:
40% Palmer Ryegrass
20% Baron Bluegrass
20% Nassau Bluegrass
20% Pennlawn Creeping Red Fescue
- G) Plant beds adjacent to building foundation to be mulched with 1-1/2" diameter washed gravel mulch spread to a 3"-4" depth over fabric weed barrier.

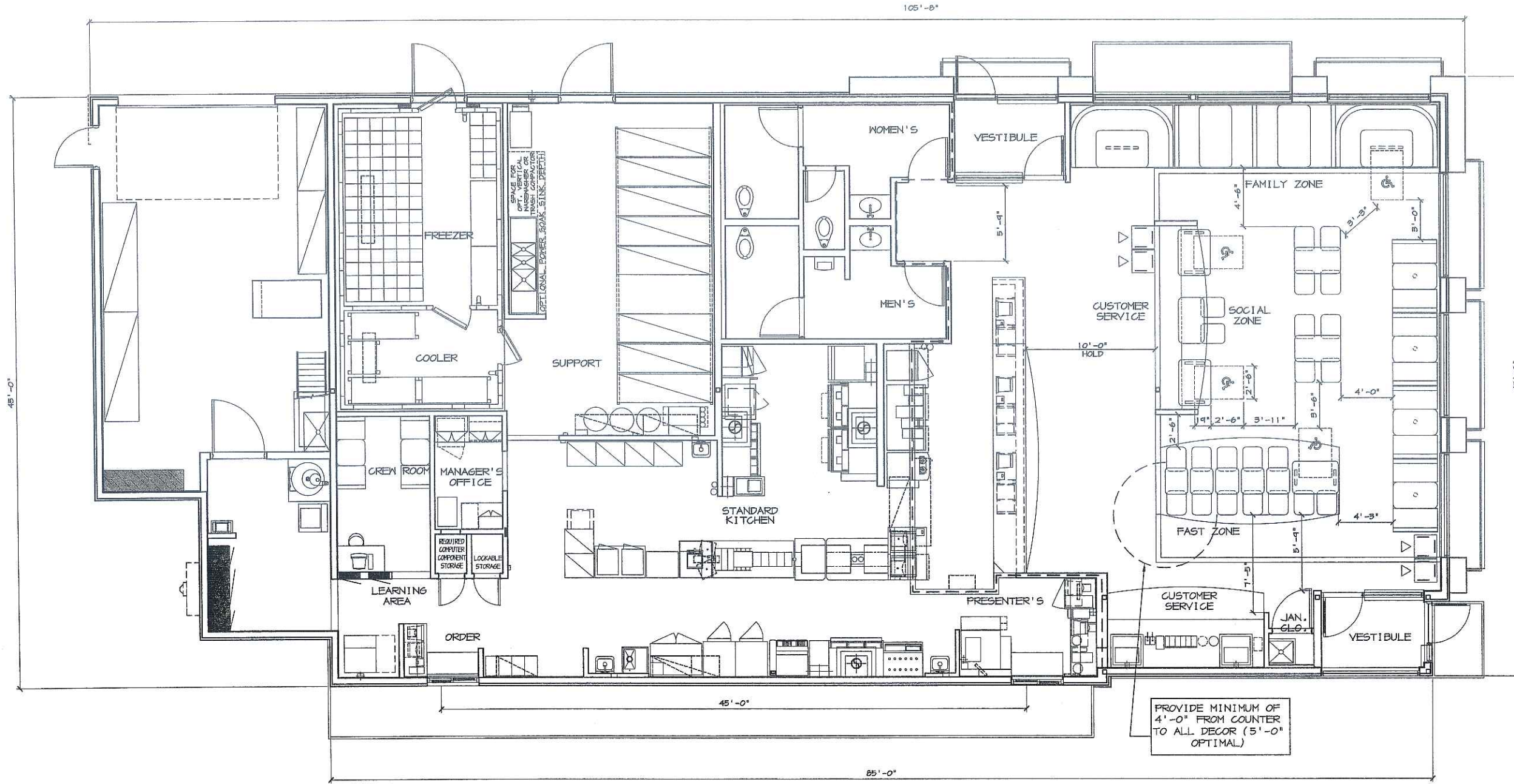
MCDONALD'S RESTAURANT
 EAST WASHINGTON AVENUE
 MADISON, WISCONSIN

Checked By: DC
 Drawn By: JD
 Revised: 6/19/07 JD
 Revised:
 Revised:
 Revised:
 Revised:

L1

This plan made exclusively for the party named in the title block. It remains the property of The Bruce Company of Wisconsin, Inc. and may not be reproduced or implemented in whole or part by any method without prior written consent of The Bruce Company of Wisconsin, Inc.





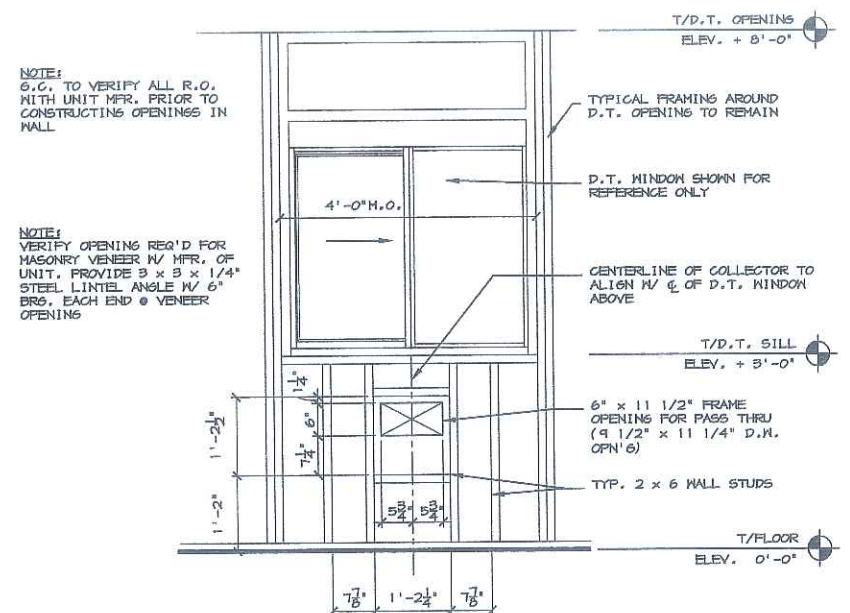
4587-WW BUILDING PLAN (VESTIBULES)
 4,561 GROSS SQ. FT./ 4,323 NET SQ. FT.
 74 SEATS (4 ACCESSIBLE SEATS)

THIS DRAWING IS FOR REFERENCE ONLY.
 SEATING LAYOUT IS SCHEMATIC. THE FINAL SEATING LAYOUT TO BE PROVIDED BY OTHERS.

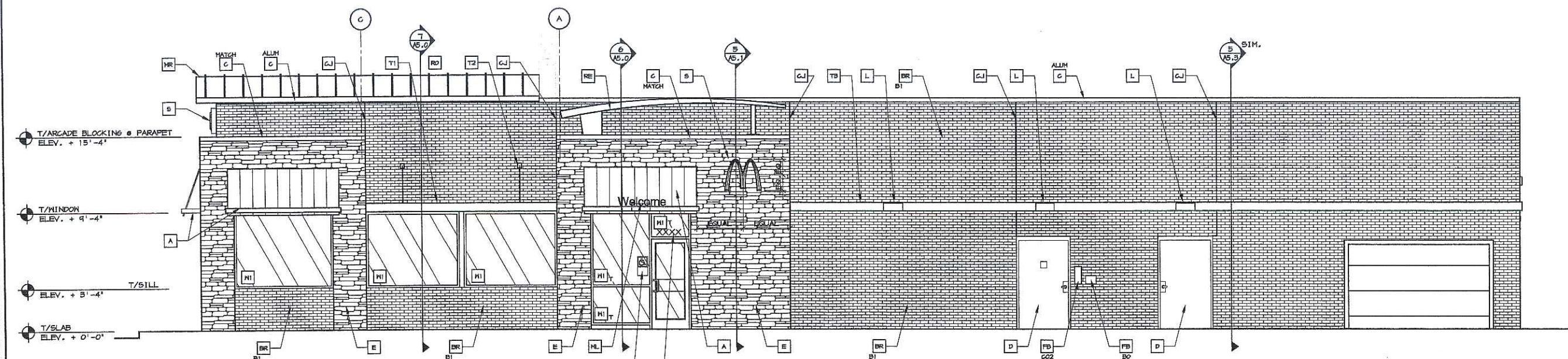
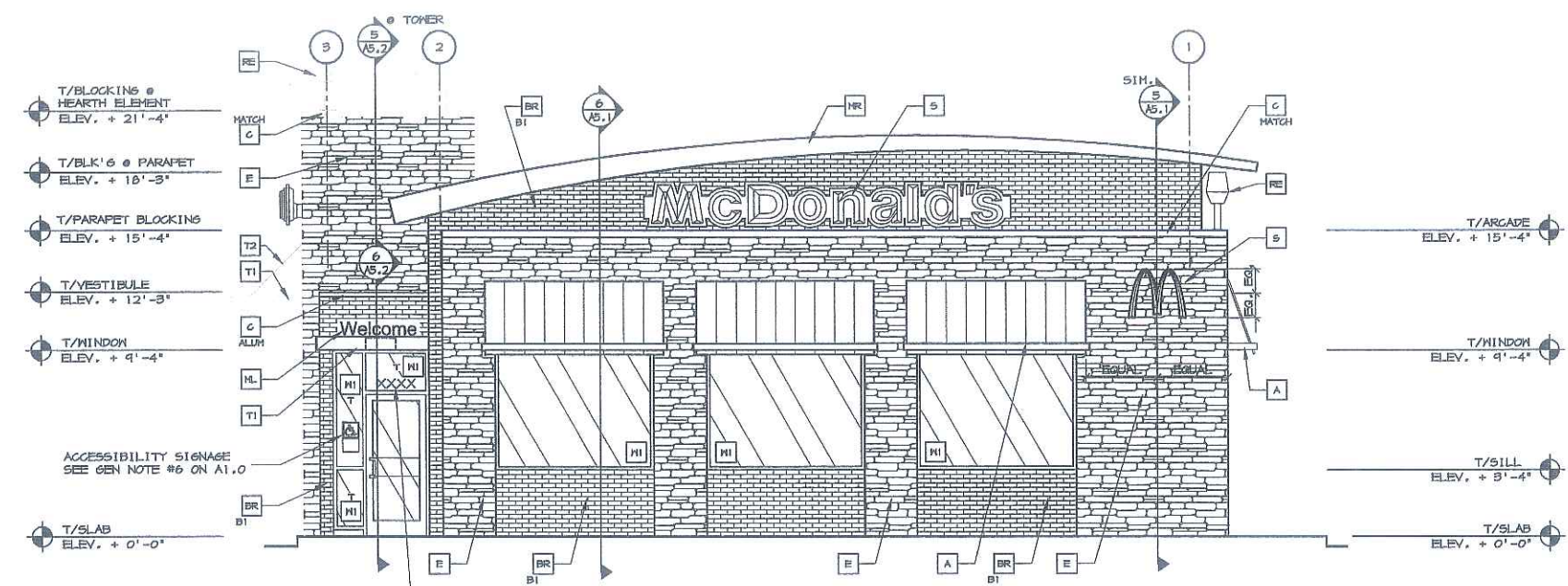
REV	DATE	DESCRIPTION	BY

PREPARED FOR:	M. McDonald's USA, LLC	
PREPARED BY:	M. McDonald's USA, LLC	
DRAWN BY:	6. JULLICA	
STD. ISSUE DATE:	APRIL, 2007	
REVIEWED BY:	USRD TEAH	
DATE ISSUED:	APRIL, 2007	
TITLE:	2007 STANDARD BUILDING	
DESCRIPTION:	4587-WW BUILDING	
SHEET NO.:		
MIS. STATE CODE:	A1.6	
SEATING PLAN:		
DESCRIPTION:	WOOD BEARING WALLS 1/4" BRICK EXTERIOR FINISH	
WOOD ROOF TRUSS FINISH:	WOOD ROOF TRUSS FINISH	
E.I.P.S.:	E.I.P.S. EXTERIOR FINISH ASCADE/ENTRY	
046-0026 5051 East Washington Avenue - Madison, WI		

K:\AD\1\BRAND INTEGRITY\CENTRAL\BRAND REV\1\1\049-0026-00-R\458\TM\A2-0-A2-1.DWG 06-07-2007 10:56



A PASS THRU COLLECTOR @ FRAME WALL
A2.0 3/4" = 1'-0"



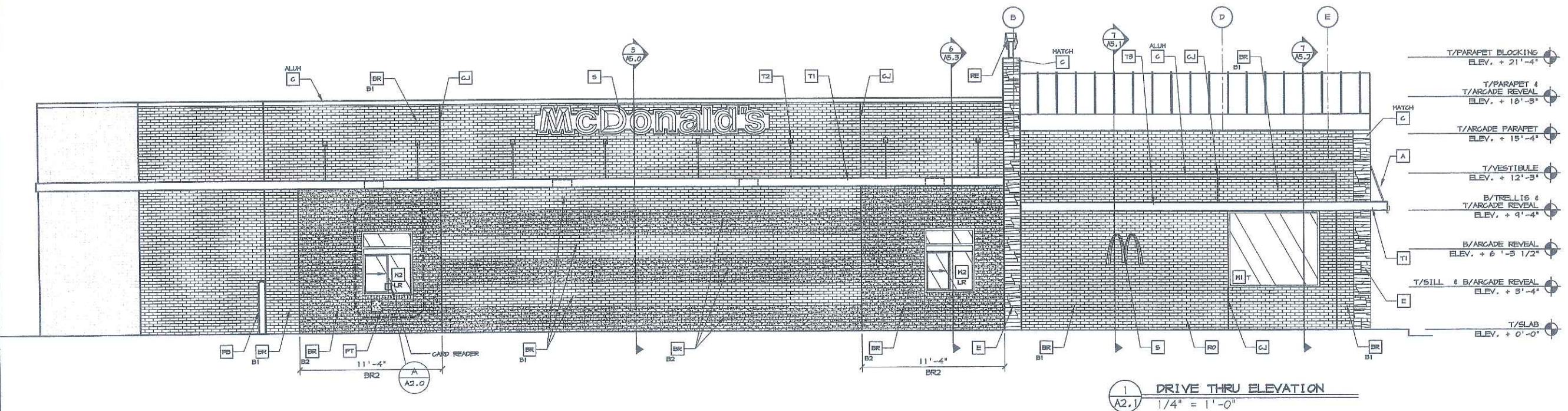
KEY NOTES:

- | | | | | | |
|---|---|--|---|---|--|
| <p>A METAL ANNING - UNDER SEPARATE PERMIT. COLOR TO BE ALTERNATING STRIPES TO MATCH PANTONE 123C AND 104C</p> <p>BR FACEBRICK</p> <p>B1 COLOR: B1 = "RUBI60 RED VELOUR" BY BELDEN OR EQUAL B2 = "MODULAR MIDLAND BLEND A" BY BELDEN OR EQUAL</p> | <p>C METAL COPING - COLOR = ALUMINUM</p> <p>C METAL COPING - COLOR TO MATCH SURROUNDING MATERIAL</p> <p>CJ CONTROL JOINT, SEE DETAIL 1/44.1</p> <p>D HOLLOW METAL DOOR - PAINT TO MATCH COLOR OF SURROUNDING MATERIAL</p> | <p>E CULTURED STONE</p> <p>FB 602 FILL BOX (EOPM SCHEDULE ITEM 44.00)</p> <p>FB OPTIONAL BULK OIL FILL BOX (EOPM SCHEDULE ITEM 700.18) - CONFIRM USE WITH MCD PROJECT MANAGER</p> <p>L LIGHT FIXTURE (WALL SCENE) - SEE ELECTRICAL</p> | <p>HL METAL LETTERING - BY OTHERS</p> <p>HR METAL ROOF - STANDING SEAM W/ALUMINUM FINISH FASCIA TRIM, COLOR TO BE "YELLOW - PANTONE COLOR #104U"</p> <p>PB PIPE BOLLARD - PAINTED YELLOW</p> <p>PT PASS-THRU COIN COLLECTOR - OPTIONAL (RHHG)</p> <p>RE ROOF GAP ELEMENT BY OTHERS</p> | <p>RO ROOF DRAIN OVERFLOW PIPE PAINT TO MATCH SURROUNDING MATERIAL</p> <p>S McDONALD'S SIGNAGE BY OTHERS - UNDER SEPARATE PERMIT. SEE SIGNAGE SUPPORT NOTE ON THIS SHEET.</p> <p>T1 ALUMINUM TRELLIS</p> <p>T2 TRELLIS TIE-BACK</p> <p>TB 2' x 6" WALL FASCIA - REFER TO SIM. DETAIL B ON SHEET A5.1</p> | <p>HI EXTERIOR WINDOW ASSEMBLY - SEE ASSEMBLY NOTES ON SHEET A5.0</p> <p>T = TEMPERED GLASS</p> <p>H2 DRIVE-THRU WINDOW BY READY ACCESS - CONFIRM MODEL, OPTIONS, AND SIZE WITH MCD PROJECT MANAGER. OPTIONS INCLUDE: TRANSOM (SHOWN); AIR CURTAIN; FLYPAN/TRANSOM 4 482 SQ IN MAX SERVICE OPENING (WHERE REQD BY CODE)</p> <p>RL SLIDE DIRECTION: RL = RIGHT TO LEFT LR = LEFT TO RIGHT</p> |
|---|---|--|---|---|--|

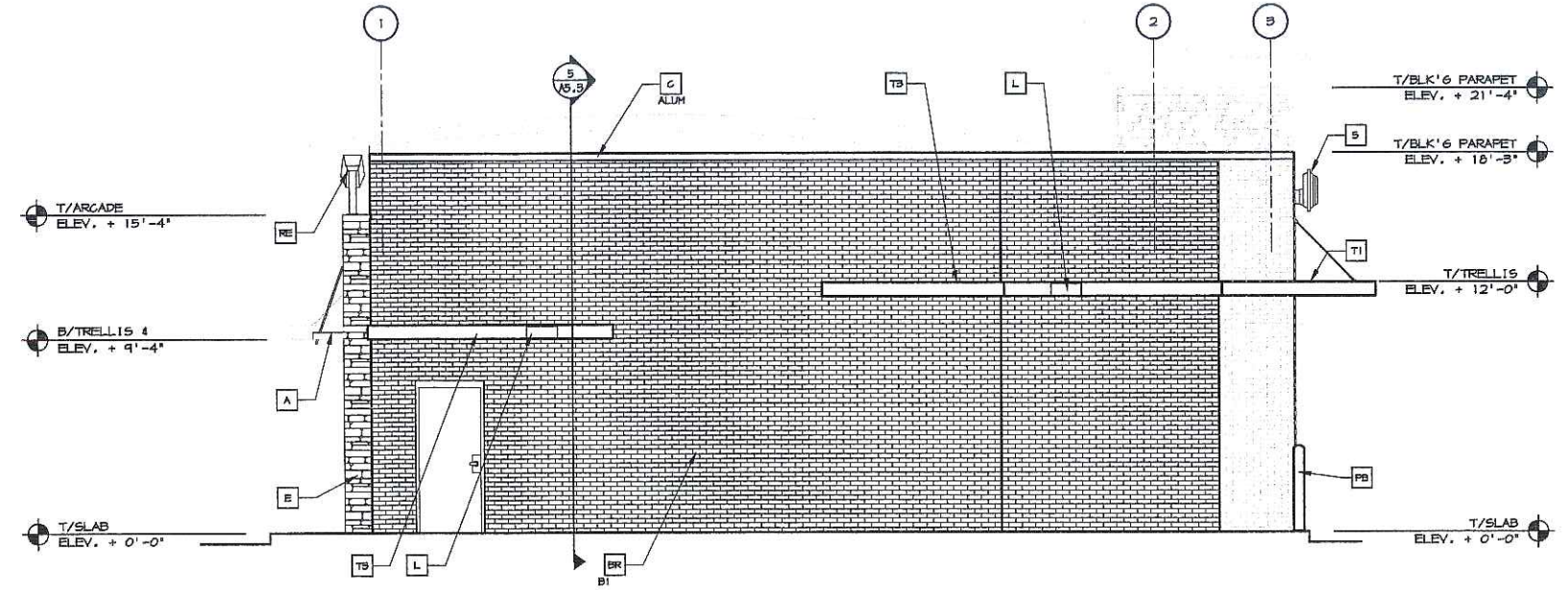
STRUCTURAL NOTE:
UNBODY FASCIA SIGN WALL SUPPORTS TO BE VERIFIED WITH McDONALD'S AREA CONSTRUCTION MANAGER AND COORDINATED WITH SIGN MANUFACTURER.

<p>© 2007 McDonald's USA, LLC McDonald's USA, LLC These drawings and specifications are the confidential and proprietary property of McDonald's USA, LLC and shall not be copied or reproduced without the prior written consent of McDonald's USA, LLC. Use of these drawings and specifications on any other project is unauthorized. Reproduction of these drawings and specifications for use on any other project is prohibited.</p>	
<p>PREPARED FOR: McDonald's USA, LLC</p>	<p>PREPARED BY: [Signature]</p>
<p>DATE ISSUED: APRIL 2007</p>	<p>DATE REVISION: APRIL 2007</p>
<p>DESIGNER: [Signature]</p>	<p>DATE: APRIL 2007</p>
<p>TITLE: 2007 STANDARD BUILDING 4587-1-WOOD/NOOD</p>	<p>DESCRIPTION: NOOD BEARING WALLS N/A" BRICK EXTERIOR FINISH NOOD ROOF TRUSS FRAMING EXTERIOR FINISH AREA/ENTRY</p>
<p>SHEET NO. 1 OF 5</p>	<p>WIS. STATE CODE A2.0 ELEVATIONS</p>
<p>8001 East Washington Avenue - Madison, WI 53711</p>	<p>BY [Signature]</p>

C:\DOCUMENTS AND SETTINGS\HCOO\22\17\PROJECTS\2005\PROJECTS\REVISED\4587\4587_A2.0_A2.1.DWG 11-06-2005 06:45



1 DRIVE THRU ELEVATION
A2.1 1/4" = 1'-0"



2 REAR ELEVATION
A2.1 1/4" = 1'-0"

KEY NOTES:

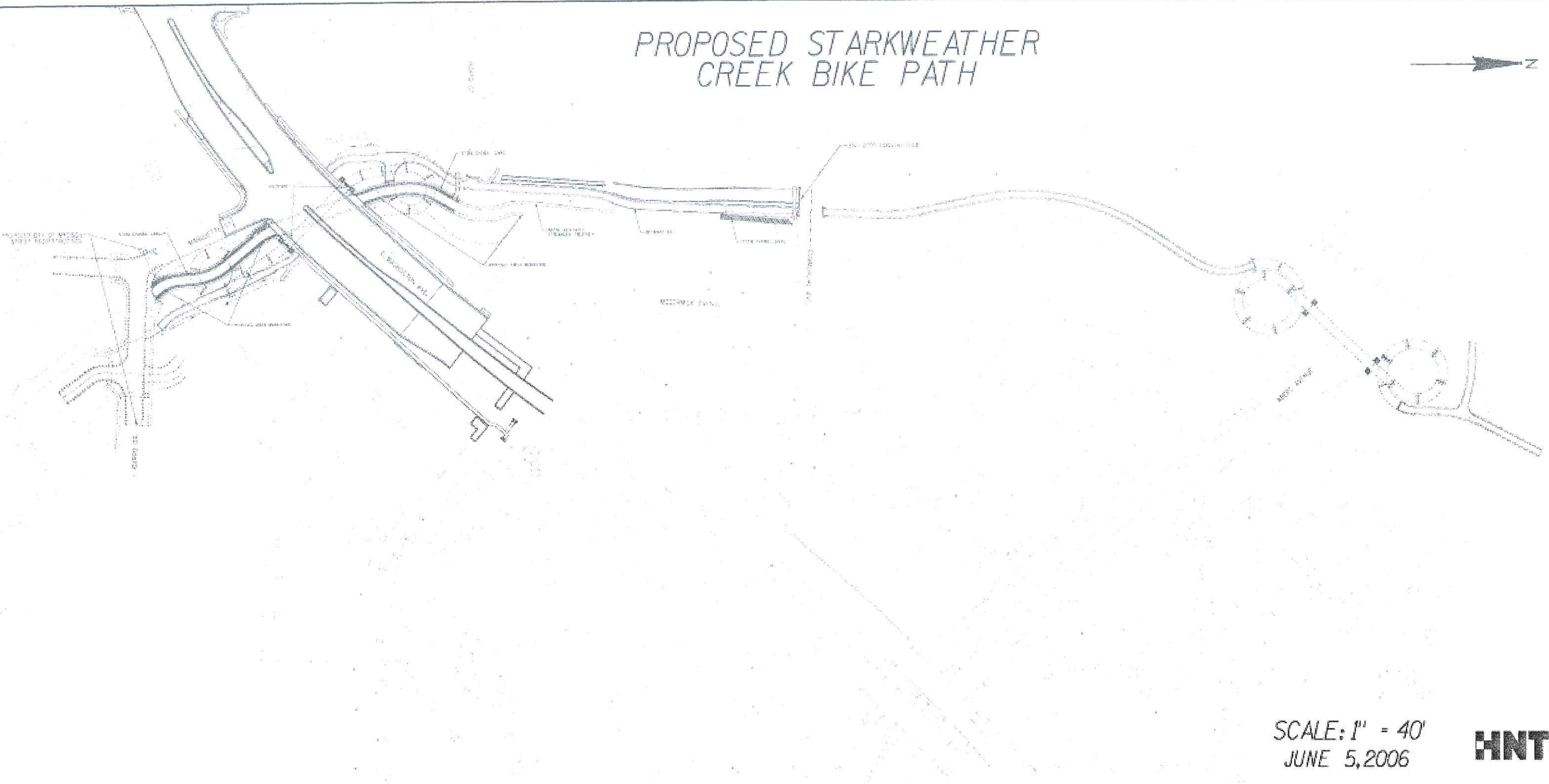
- A METAL ANILING - UNDER SEPARATE PERMIT. COLOR TO BE ALTERNATING STRIPES TO MATCH PANTONE 125C AND 104C.
- BR FACEBRICK
B1 COLOR: B1 = "RUB160 RED VELOUR" BY BELDEN OR EQUAL
B2 = "MODULAR MIDLAND BLEND A" BY BELDEN OR EQUAL.
- C METAL COPING - COLOR = ALUMINUM
- ALUM
- C METAL COPING - COLOR TO MATCH SURROUNDING MATERIAL
- MATCH
- CJ CONTROL JOINT, SEE DETAIL T/A4.1
- D HOLLOW METAL DOOR - PAINT TO MATCH COLOR OF SURROUNDING MATERIAL.
- E CULTURED STONE
- FB COZ FILL BOX (EOPM SCHEDULE ITEM 49.00) COZ
- OPTIONAL BULK OIL FILL BOX (EOPM SCHEDULE ITEM 700.12) - CONFIRM USE WITH MCO PROJECT MANAGER
- L LIGHT FIXTURE (MALL SCENE) - SEE ELECTRICAL
- HL METAL LETTERING - BY OTHERS
- HR METAL ROOF - STANDING SEAM W/ALUMINUM FINISH FASCIA TRIM, COLOR TO BE "YELLOW - PANTONE COLOR #104U"
- FB PIPE BOLLARD - PAINTED YELLOW
- PT PASS-THRU COIN COLLECTOR - OPTIONAL (R/H/C)
- RE ROOF CAP ELBOW BY OTHERS
- RO ROOF DRAIN OVERFLOW PIPE PAINT TO MATCH SURROUNDING MATERIAL
- S McDONALD'S SIGNAGE BY OTHERS - UNDER SEPARATE PERMIT. SEE SIGNAGE SUPPORT NOTE ON THIS SHEET.
- T1 ALUMINUM TRELLIS
- T2 TRELLIS TIE-BACK
- TB 2' x 8' WALL FASCIA - REFER TO 516. DETAIL B ON SHEET A5.1
- H1 EXTERIOR WINDOW ASSEMBLY - SEE ASSEMBLY NOTES ON SHEET A5.0
T = TEMPERED GLASS
- H2 DRIVE-THRU WINDOW BY READY ACCESS - CONFIRM MODEL, OPTIONS, AND SIZE WITH MCO PROJECT MANAGER. TRANSOM (SHOWN): AIR CURTAIN; FLY/PAN/TRANSOM & 492 50 1/4" MAX SERVICE OPENING (WHERE REQ'D BY CODE)
- H3 SLIDE DIRECTION!
RL = RIGHT TO LEFT
LR = LEFT TO RIGHT

STRUCTURAL NOTE:

UNIBODY FASCIA SIGN MALL SUPPORTS TO BE VERIFIED WITH McDONALD'S AREA CONSTRUCTION MANAGER AND COORDINATED WITH 516 MANUFACTURER.

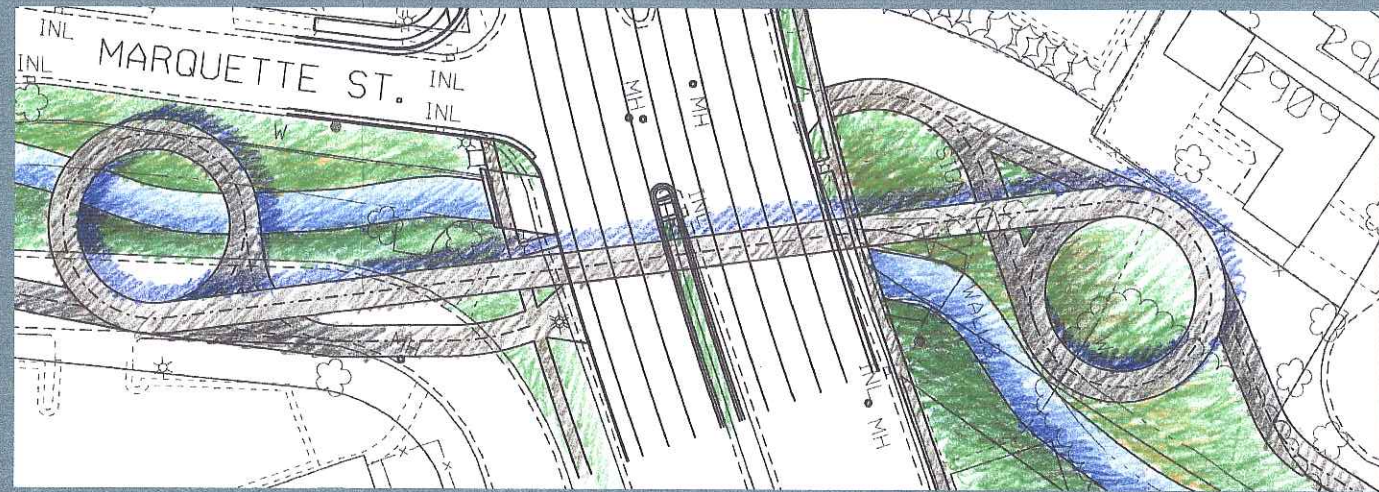
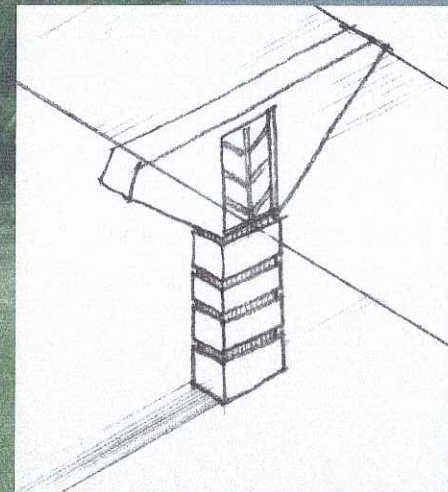
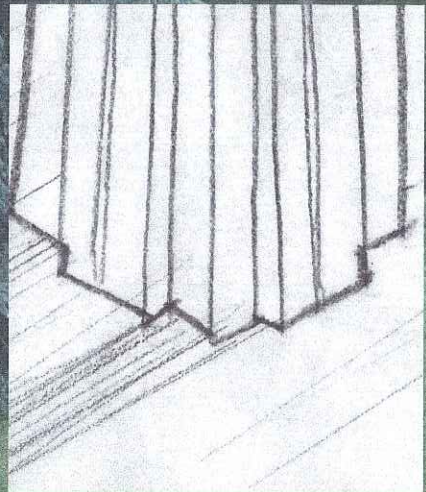
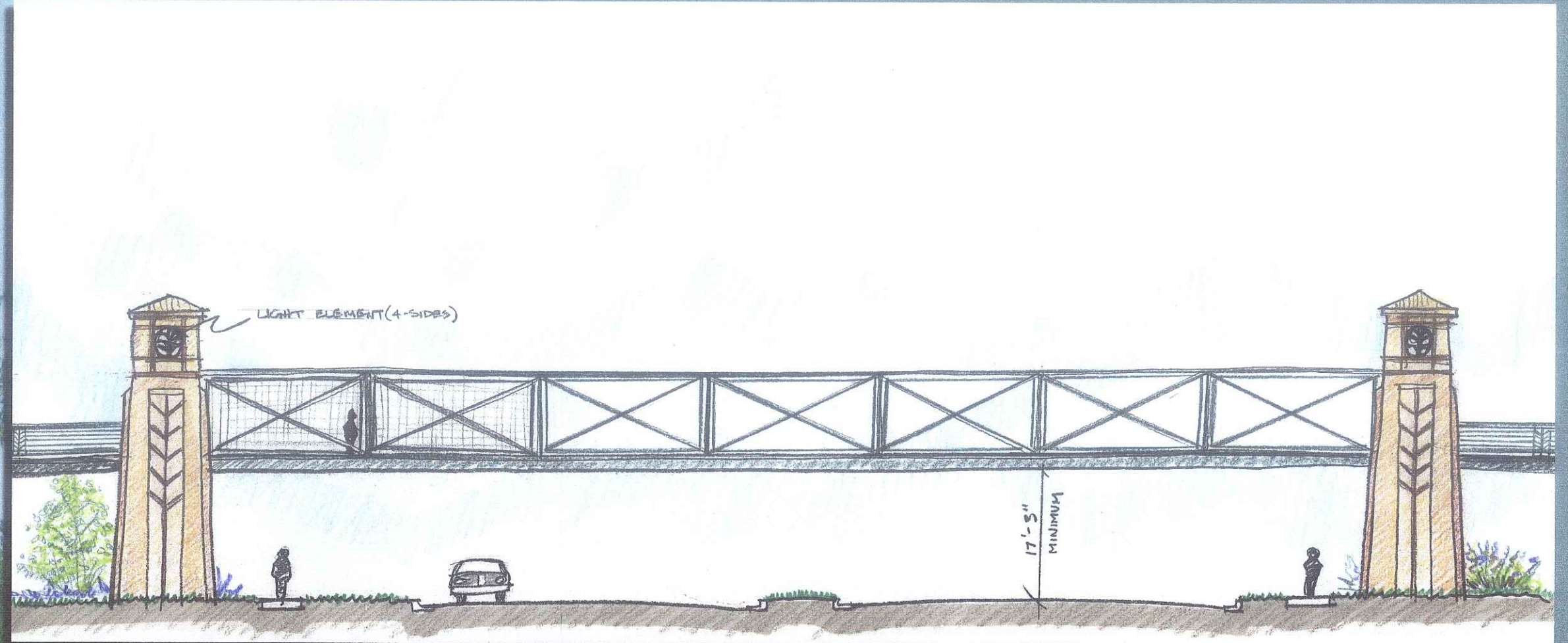
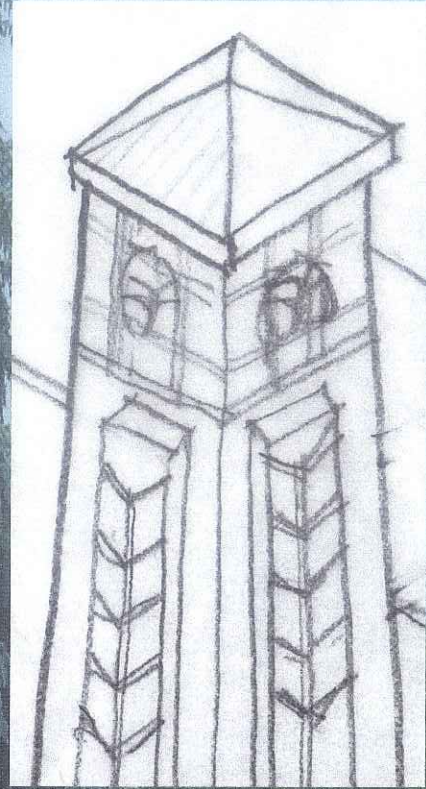
© 2007 McDonald's USA, LLC
 PREPARED BY:
McDonald's USA, LLC
 These drawings and specifications are the confidential and proprietary property of McDonald's USA, LLC and shall not be copied or reproduced without the written consent of McDonald's USA, LLC. Use of these drawings for use on a different site or at a later time, use of the drawings for the construction of any building or structure, or for the services of properly licensed architects and engineers. Reproduction of the contract documents for reuse on another project is not authorized.
 DRAWN BY:
 516 ISSUE DATE:
 APRIL 2007
 REVISED BY:
 USRD TEAH
 DATE ISSUED:
 APRIL 2007
 TITLE:
 2007 STANDARD BUILDING
 4587-WOOD/NOOD
 DESCRIPTION:
 NOOD BEARING WALLS 1/4" BRICK EXTERIOR FINISH
 NOOD ROOF TRUSS FRAMING
 EXTERIOR FINISH ARCADE/ENTRY
 SITE ID:
 516 ADDRESS:
 5051 East Washington Avenue - Hoffman, MI
 048-0026
 SHEET NO.:
A2.1
 ELEVATIONS
 PREPARED BY:
McDonald's USA, LLC
 TITLE:
 2007 STANDARD BUILDING
 4587-WOOD/NOOD
 DESCRIPTION:
 NOOD BEARING WALLS 1/4" BRICK EXTERIOR FINISH
 NOOD ROOF TRUSS FRAMING
 EXTERIOR FINISH ARCADE/ENTRY
 SHEET NO.:
A2.1
 ELEVATIONS
 DRAWN BY:
 516 ISSUE DATE:
 APRIL 2007
 REVISED BY:
 USRD TEAH
 DATE ISSUED:
 APRIL 2007
 PREPARED BY:
 © 2007 McDonald's USA, LLC
 These drawings and specifications are the confidential and proprietary property of McDonald's USA, LLC and shall not be copied or reproduced without the written consent of McDonald's USA, LLC. Use of these drawings for use on a different site or at a later time, use of the drawings for the construction of any building or structure, or for the services of properly licensed architects and engineers. Reproduction of the contract documents for reuse on another project is not authorized.
 DRAWN BY:
 516 ISSUE DATE:
 APRIL 2007
 REVISED BY:
 USRD TEAH
 DATE ISSUED:
 APRIL 2007
 TITLE:
 2007 STANDARD BUILDING
 4587-WOOD/NOOD
 DESCRIPTION:
 NOOD BEARING WALLS 1/4" BRICK EXTERIOR FINISH
 NOOD ROOF TRUSS FRAMING
 EXTERIOR FINISH ARCADE/ENTRY
 SHEET NO.:
A2.1
 ELEVATIONS

PROPOSED STARKWEATHER
CREEK BIKE PATH



SCALE: 1" = 40'
JUNE 5, 2006

HNTB



**PROPOSED TRUSS -
PEDESTRIAN BRIDGE
FOR EAST WASHINGTON
AND ABERG AVENUES**



Starkweather Creek

BIKE TRAIL & PEDESTRIAN BRIDGE

City of Madison, Wisconsin

