

November 29, 2010

Ms. Amy Loewenstein Scanlon, AIA, LEED AP
Preservation Planner, City of Madison
City of Madison Landmarks Commission
215 Martin Luther King, Jr. Boulevard
Madison, WI 53701-2985

RE: Request for window sash replacement
December 13, 2010 Madison Landmarks Commission meeting

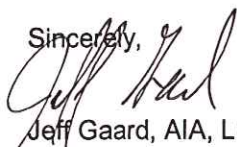
Dear Ms. Scanlon and members of Madison Landmarks Commission:

Please accept the following materials (submittal letter, photos, and elevation drawings) for presentation to the Commission at the December 13 meeting. I would like to replace windows and French doors in a two-phased implementation schedule:

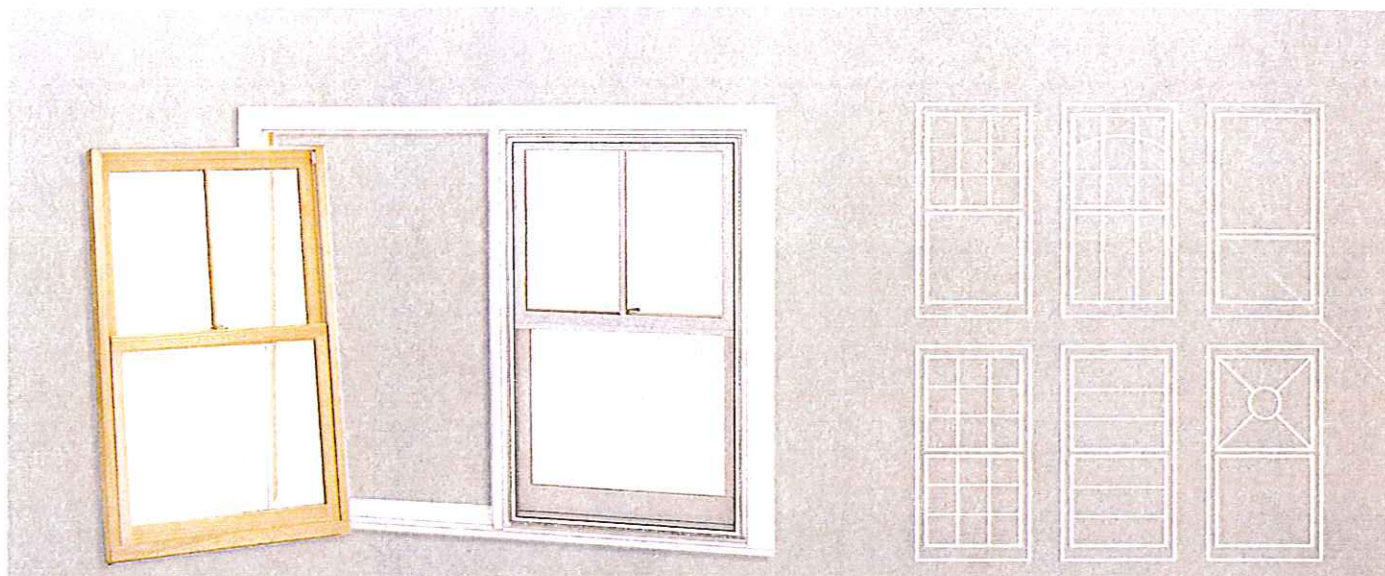
- Phase 1: replacement of twelve (12) double-hung window sashes, consisting of eleven (11) windows with 6/6 mullion pattern and one (1) window with 4/4 mullion pattern; and one (1) casement window at kitchen. For all windows, the existing wood frames and interior wood trim will be retained and fully restored; painted to match current color.
 - Proposed products are Marvin's Ultimate Insert Double Hung replacement window, and Ultimate French Casement exterior push-out, selected for appropriate balance of quality, aesthetics, and maintenance considerations.
 - Clad sashes preferred, but will install wood sashes if requested by Commission.
 - Simulated Divided Lite (SDL) with spacer bars, 7/8" profile to match existing, with 6/6 or 4/4 mullion pattern to match existing.
 - Non-original storm windows will be removed, as double-glazed new sashes will provide much better energy efficiency than existing single-glazed sashes. Several sashes have ongoing condensation issues, including freezing in winter.
 - New sashes will tilt in for easy cleaning; upper level windows are now very difficult to clean.
 - Existing kitchen casement is non-functional. To crank open, the entire frame with screen must be physically removed; on multiple occasions with strong winds, the entire screen frame has blown in, creating a safety hazard for a person at the sink.
- Phase 2: replacement of four (4) pairs of in-swinging French doors, with 2x5 mullion pattern. As with the double-hung windows, the existing wood frames and interior wood trim will be retained and fully restored; painted to match current color.
 - Proposed product is Marvin's Ultimate Swinging French Doors, likewise selected for appropriate balance of quality, aesthetics, and maintenance considerations.

If you have further questions, you may contact me at (608) 238-3626.

Sincerely,



Jeff Gaard, AIA, LEED AP
1722 Summit Avenue
Madison, WI 53726



These are only a few designs for divided lites. Please see options section or Marvin.com for more possibilities.

INTERIOR	EXTERIOR	DESIGN POSSIBILITIES
----------	----------	----------------------

REVIVE THE BEAUTY WHEN YOU REPLACE THE WINDOW.

With the Ultimate Insert Double Hung replacement window you have a beautiful alternative to vinyl replacement windows. There's no need to take out the current frame, remove trim or replace wallpaper. The frame-in-frame design is crafted specifically to your window opening so it fits perfectly into the existing space. Options like a flat frame or frame bevels ensure a snug fit. The sash even tilts or comes out for easy cleaning so there's less work and more time to enjoy the scenery. And Marvin's vast array of hardware finishes, wood species and clad colors means you'll get the exact look you want.

STANDARD FEATURES

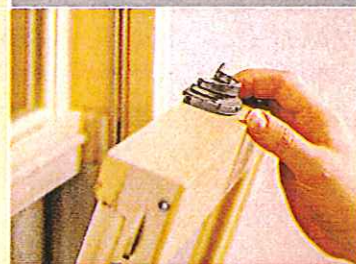
- One-lite LoE²-272[®] with argon insulating glass
- Satin Taupe sash lock
- Bare wood interior
- All wood exterior (wood units)
- Extruded aluminum clad exterior (clad units)
- 4 9/16" (116 mm) jambs (wood units)
- 3 1/4" (82.5 mm) jambs (clad units)
- Installation hardware

HARDWARE

SASH LOCK



DETAILS



SASH LIFT



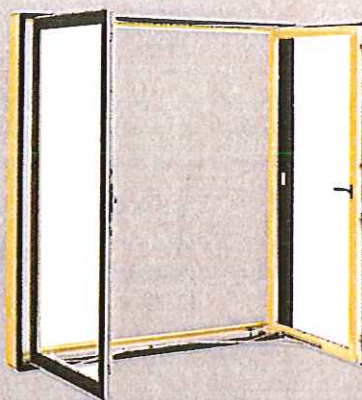
(optional)

TILTING SASH

The hardware easily operates with one hand so hard to clean areas become accessible with the tilt feature.



INTERIOR PUSH OUT



EXTERIOR PUSH OUT



EXTERIOR

CLASSIC ELEGANCE, MODERN PERFORMANCE.

Traditional styling and modern features distinguish the new Ultimate French Casement. The newest windows in the Ultimate Casement Collection features push out or cranking hardware and clean lines to let in maximum light. The Ultimate French Casement has no center stile or vertical post, making it ideal for those who want to enjoy an unobstructed view. And a Marvin-exclusive wash mode makes it easy to keep that view sparklingly clean. Built with strength, it has up to a DP50 performance rating. Strength, beauty and performance: the Ultimate French Casement is the ideal solution for any application.

STANDARD FEATURES

- Full 4 ⁷/₁₆" or narrow 2 ³/₁₆" jamb options
- Revolutionary wash mode
- Oil Rubbed Bronze push out handle or Satin Taupe folding handle
- Exclusive easy-installation features
- One-lite LoE²-272[®] with argon insulating glass
- Extruded aluminum clad exterior (clad units)
- Bare wood interior

DETAILS



ULTIMATE FLEXIBILITY

Open the window with a classic push out hardware system or choose a more modern cranking variation. Two jamb widths are available. The full 4 ⁷/₁₆" jamb on the Ultimate French Casement is ideal for full frame replacement and new construction. The narrow 2 ³/₁₆" can be used as a solution for frame-in-frame installation, remodeling or new construction.



INSWING



OUTSWING

THIS DOOR KNOWS HOW TO MAKE AN ENTRANCE.

Unmatched in fit and finish, our Ultimate Swinging French Doors offer you a remarkable amount of design flexibility with trusted Marvin quality. The inswing model accentuates any interior with generous amounts of space while the outswing is ideal for high traffic areas or limited interior space. Designed to the nth degree, most come with a DP40 rating for commercial-grade performance. And the sill is made with super tough Ultrex[®] – so your sill doesn't warp, rot, corrode or fade over time.

STANDARD FEATURES

- Tempered, one-lite LoE²-272[®] with argon insulating glass
- Multi-point locking system on the active panel
- Head and foot bolts on inactive panel
- Satin Taupe adjustable hinges
- Oak liner on beige Ultrex sill
- Bare wood interior
- All wood brick mould casing (wood units)
- Extruded aluminum clad exterior (clad units)
- 4 9/16" (116 mm) jambs

HARDWARE

HANDLE



HINGES



ADJUSTABLE



BUTT
(optional)

DETAILS



ULTIMATE SWINGING SCREEN

Storm and screen combinations provide a beautiful complement to rectangular and arch top wood and clad inswing doors.



ENERGY EFFICIENT

Marvin Windows and Doors are engineered for energy efficiency. Windows and doors are the biggest energy losers in a typical home, that's why choosing the right product is essential for long term savings on utility bills. Marvin wood and wood clad windows are more energy-efficient than vinyl or all aluminum windows. Every Marvin window is hand-crafted and built to exactly fit your specifications, better fit means less money spent on heating and cooling your home. Your Marvin dealer can recommend the best options, production and glass choices for your climate.

ENERGY EFFICIENT GLASS OPTIONS

- Double-pane with argon gas
- Hi-R Tripane: Features two layers of LoE glass with a clear center pane
- LoE²-272[®]: Features double metallic coating on the inside glass surface to reflect or absorb the sun's warmth and reduce damaging UV rays
- LoE³-366[®]: Features three metallic layers of silver, this glass rejects solar heat. Recommended for warm climates where cooling costs are high and also for areas with intense exposure to the sun

Most Marvin products are certified for energy efficiency in all regions of the United States by the federal ENERGY STAR program. Look for the ENERGY STAR label for your assurance of top performance.



ENERGY TAX CREDIT

Marvin products qualify for the federal energy tax credit.

If you are replacing old windows and doors with qualifying Marvin windows and doors between January 1, 2009 and December 31, 2010, you can qualify for a tax credit through the Economic Stimulus Package. To qualify, you will need the following:

TAX CREDIT REQUIREMENTS

- Purchase receipt
- All NFRC/ENERGY STAR labels from the windows and doors
- Print and file the Manufacturer's Certification Statement pertaining to the American Recovery and Reinvestment Act of 2009 (available at Marvin.com)

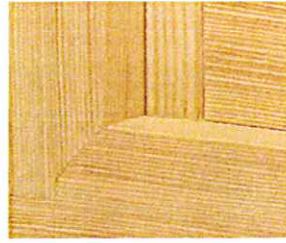
For more information on the Energy Tax Credit, visit your local Marvin dealer or marvin.com

WOOD SPECIES

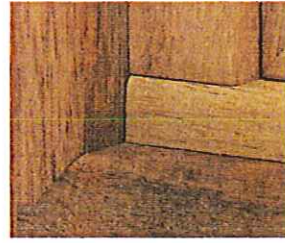
SELECT



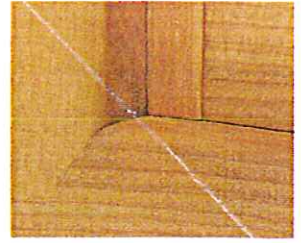
PINE



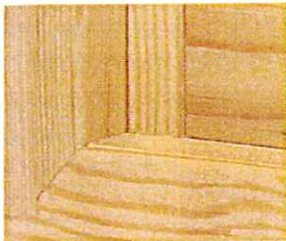
VERTICAL GRAIN
DOUGLAS FIR



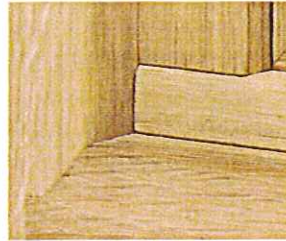
MAHOGANY



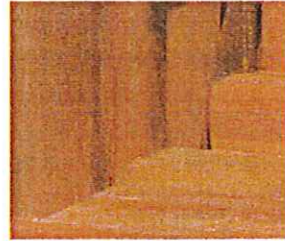
CHERRY



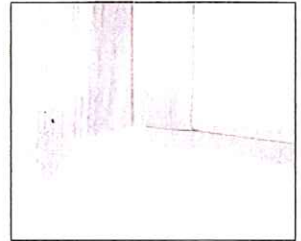
DOUGLAS FIR



WHITE OAK



CEDRO MACHO



PRIMED WOOD

DIVIDED LITES

SIMULATED DIVIDED LITE (SDL)



SDL is an energy-efficient way to create the look of divided lites. SDL bars are permanently adhered to both sides of the glass.

SIMULATED DIVIDED LITE WITH SPACER BAR



SDL bars are combined with spacer bars installed between the glass, creating the essence of Authentic Divided Lites.

AUTHENTIC DIVIDED LITE (ADL)



Separate panes of glass are glazed between muntin bars – the way windows have been made since the beginning. Now, Marvin's state-of-the-art design adds traditional appeal. (Available for wood units only.)

GRILLES

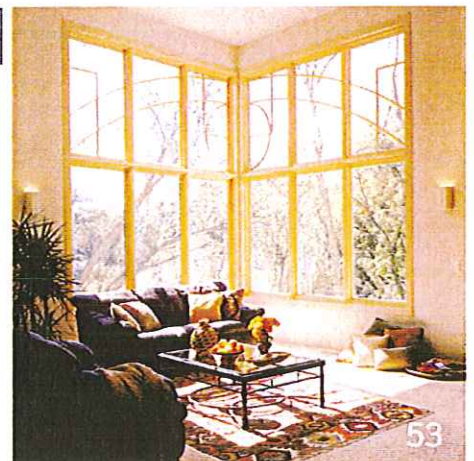


Solid wood Grilles on the interior offer the look of classic divided lites, but can be easily removed for cleaning.

GRILLES-BETWEEN-THE-GLASS (GBG'S)



Grilles are permanently installed between the glass panes. This low-maintenance option creates the look of divided lites.

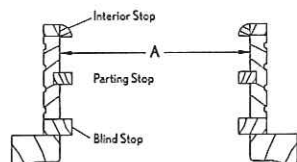


WOOD AND CLAD ULTIMATE INSERT DOUBLE HUNG

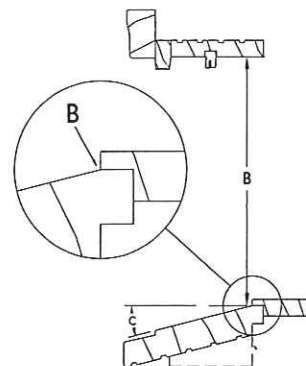
ULTIMATE INSERT DOUBLE HUNG MEASUREMENT INSTRUCTIONS

1. For Inside Opening Width (A) measure inside of frame at three locations: the sill, the center and the head jamb. Record the narrowest measurement. Do not measure from parting stops or blind stops. See illustration 1.

Note: This measurement is from wood surface to wood surface. Removal of existing jamb hardware may be necessary to reach the frame.



EXISTING WINDOW FRAME
ILLUSTRATION 1

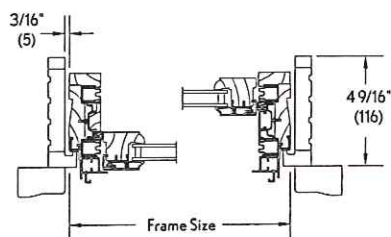


EXISTING WINDOW FRAME
ILLUSTRATION 2

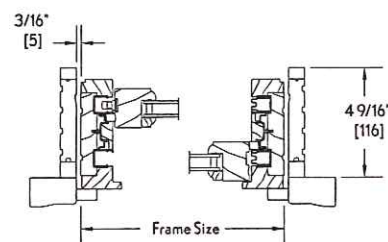
2. Measure the Inside Opening Height (B) from the top of the sill to the bottom of the head jamb as shown in illustration 2.
3. Check the Sill Angle (C). Record the sill angle to the nearest degree. See illustration 2.

Note: If the angle of the sill is 8° or less the unit will be made with a flat bottom frame, if it is greater than 8° it will be made with a bevel frame.

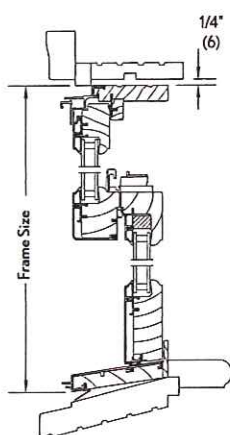
CONSTRUCTION DETAILS



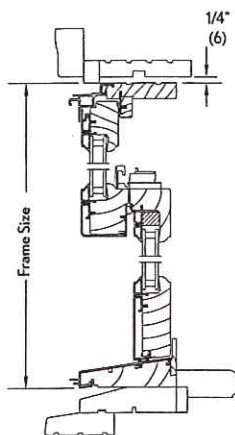
CLAD JAMB INSTALLED
IN EXISTING FRAME



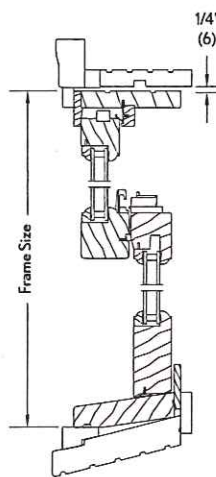
WOOD JAMB INSTALLED
IN EXISTING FRAME



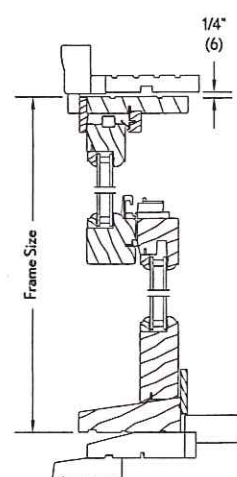
CLAD HEAD JAMB, CHECKRAIL,
WITH BEVELED FRAME INSTALLED
IN EXISTING FRAME



CLAD HEAD JAMB, CHECKRAIL,
WITH FLAT FRAME INSTALLED
IN EXISTING FRAME



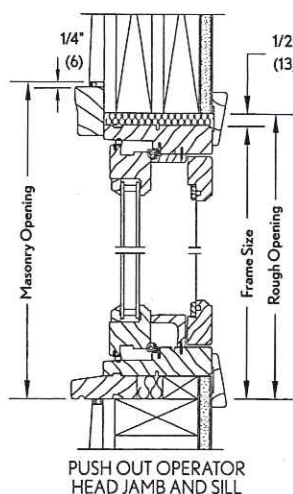
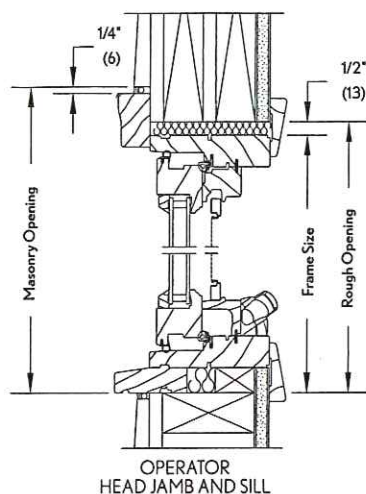
WOOD HEAD JAMB, CHECKRAIL,
WITH BEVELED FRAME INSTALLED
IN EXISTING FRAME



WOOD HEAD JAMB, CHECKRAIL,
WITH FLAT FRAME INSTALLED
IN EXISTING FRAME

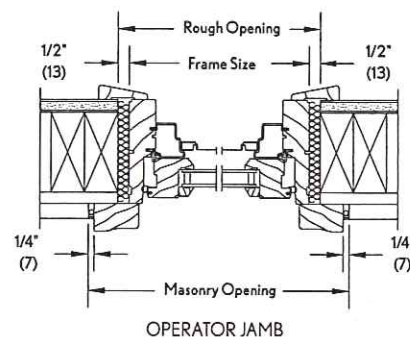
WOOD ULTIMATE CASEMENT/PUSH OUT CASEMENT

CONSTRUCTION DETAILS



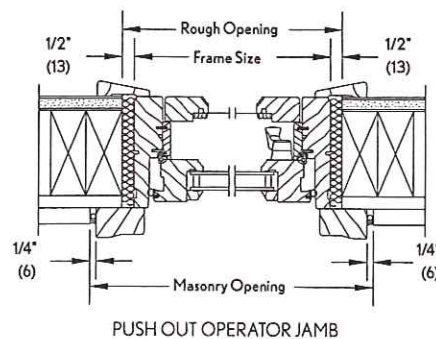
WOOD ULTIMATE CASEMENT

ENERGY DATA	U-Factor	R-Value	SHGC	VT	CR	ENERGY STAR
1" Tri-Pane LoE 272 Air LoE 272	0.25	4.0	0.24	0.38	64	N, NC, SC, S
1" Tri-Pane LoE 272 Argon LoE 272	0.22	4.5	0.24	0.38	68	N, NC, SC, S
1" Tri-Pane LoE EA Air LoE EA	0.26	3.8	0.38	0.42	62	N, NC
1/8" SG	0.79	13	0.58	0.60	12	
1/8" SG w/EP	0.42	24	0.52	0.55	45	
1/8" SG w/LoE EA EP	0.33	30	0.44	0.50	53	
3/4" Insulating Glass Air	0.42	24	0.52	0.55	44	
3/4" Insulating Glass LoE 272 Air	0.31	32	0.28	0.48	56	NC, SC
3/4" Insulating Glass LoE 272 Argon	0.28	36	0.28	0.48	59	N, NC, SC
3/4" Insulating Glass LoE 366 Air	0.30	33	0.19	0.43	57	N, NC, SC, S
3/4" Insulating Glass LoE 366 Argon	0.27	37	0.18	0.43	60	N, NC, SC, S



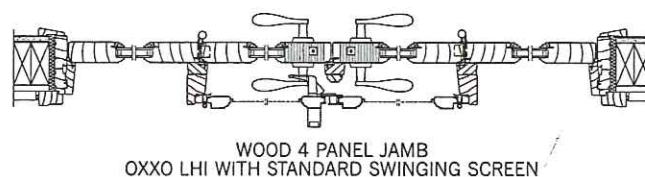
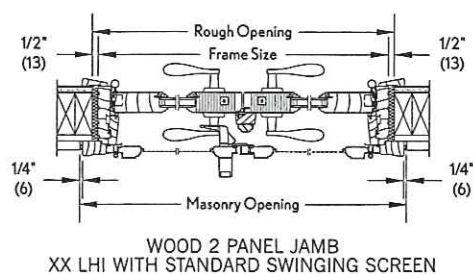
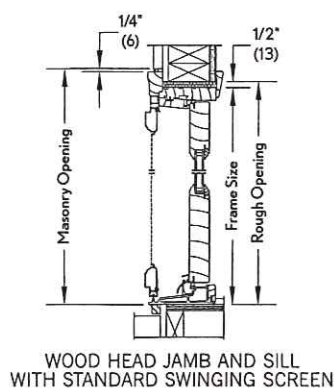
WOOD ULTIMATE PUSH OUT CASEMENT

ENERGY DATA	U-Factor	R-Value	SHGC	VT	CR	ENERGY STAR
1" Tri-Pane LoE 272 Air LoE 272	0.26	3.8	0.24	0.38	64	N, NC, SC, S
1" Tri-Pane LoE 272 Argon LoE 272	0.23	4.3	0.24	0.38	67	N, NC, SC, S
1" Tri-Pane LoE EA Air LoE EA	0.28	3.6	0.38	0.42	62	N, NC
1/8" SG	0.80	13	0.58	0.60	12	
1/8" SG w/EP	0.43	23	0.52	0.55	45	
1/8" SG w/LoE EA EP	0.34	29	0.44	0.50	54	
3/4" Insulating Glass Air	0.44	23	0.52	0.55	44	
3/4" Insulating Glass LoE 272 Air	0.32	31	0.28	0.48	56	NC, SC
3/4" Insulating Glass LoE 272 Argon	0.29	34	0.28	0.48	59	N, NC, SC
3/4" Insulating Glass LoE 366 Air	0.32	31	0.19	0.43	56	NC, SC, S
3/4" Insulating Glass LoE 366 Argon	0.29	34	0.19	0.43	60	N, NC, SC, S



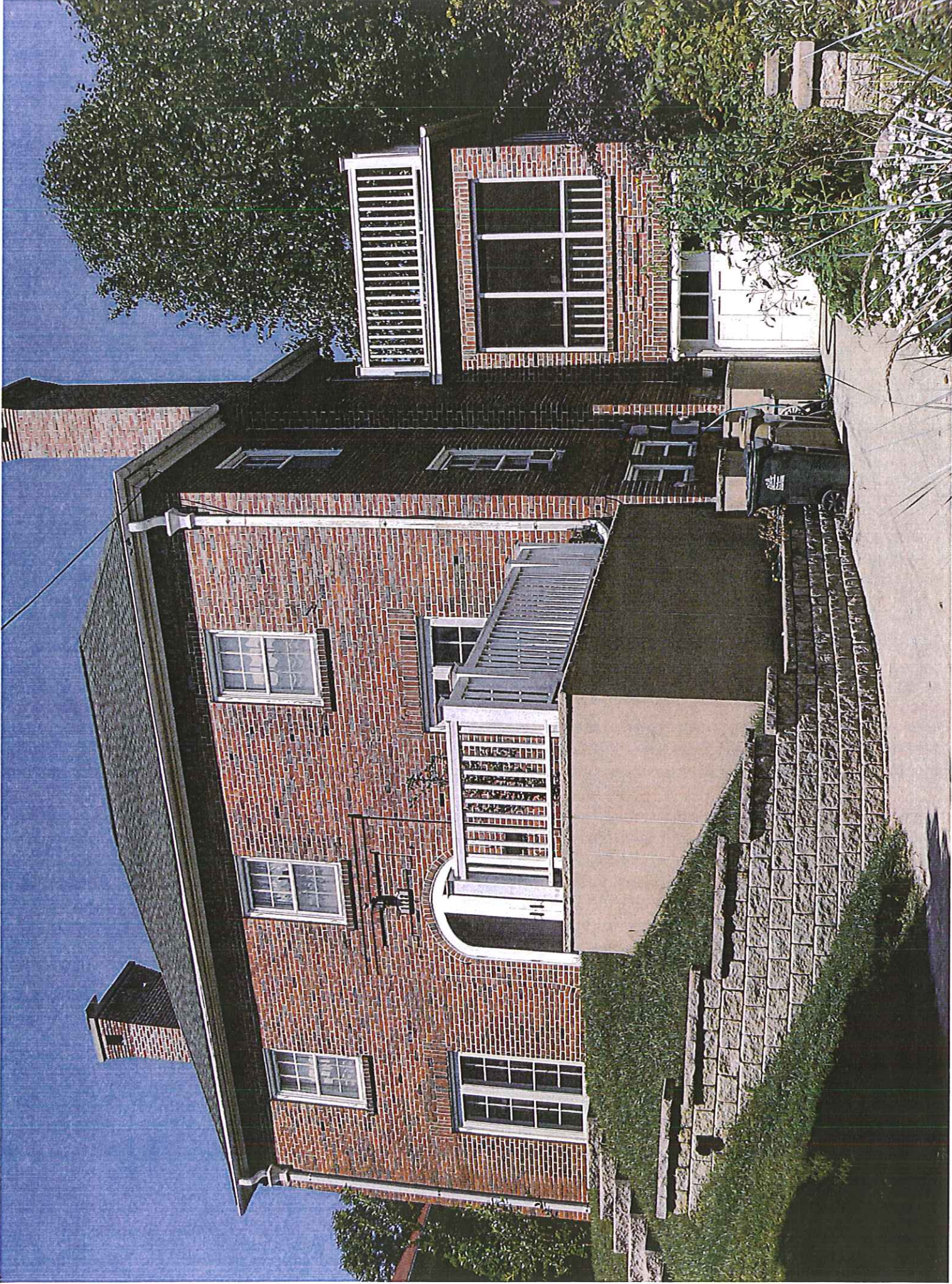
ULTIMATE INSWING FRENCH DOOR

CONSTRUCTION DETAILS

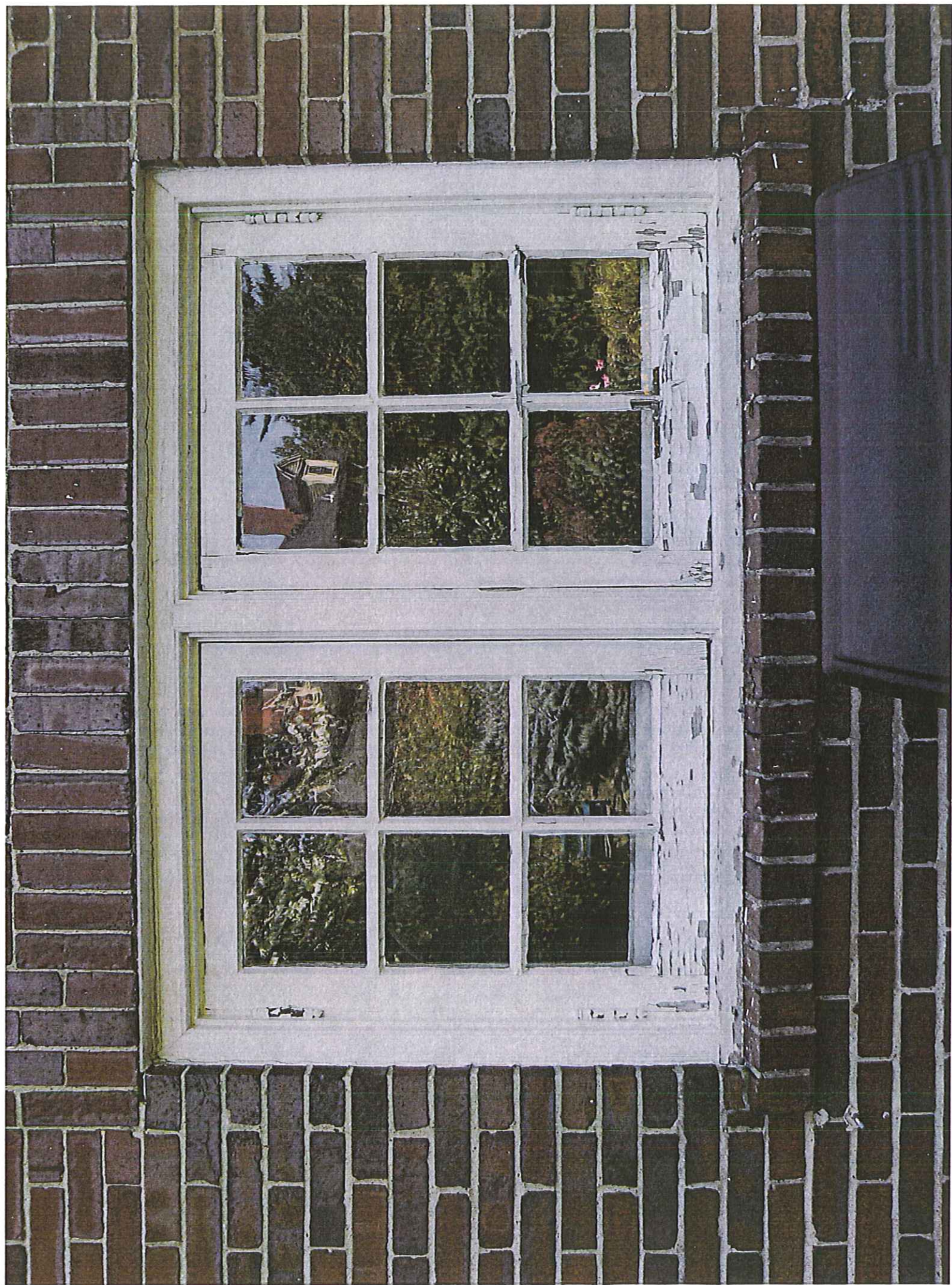


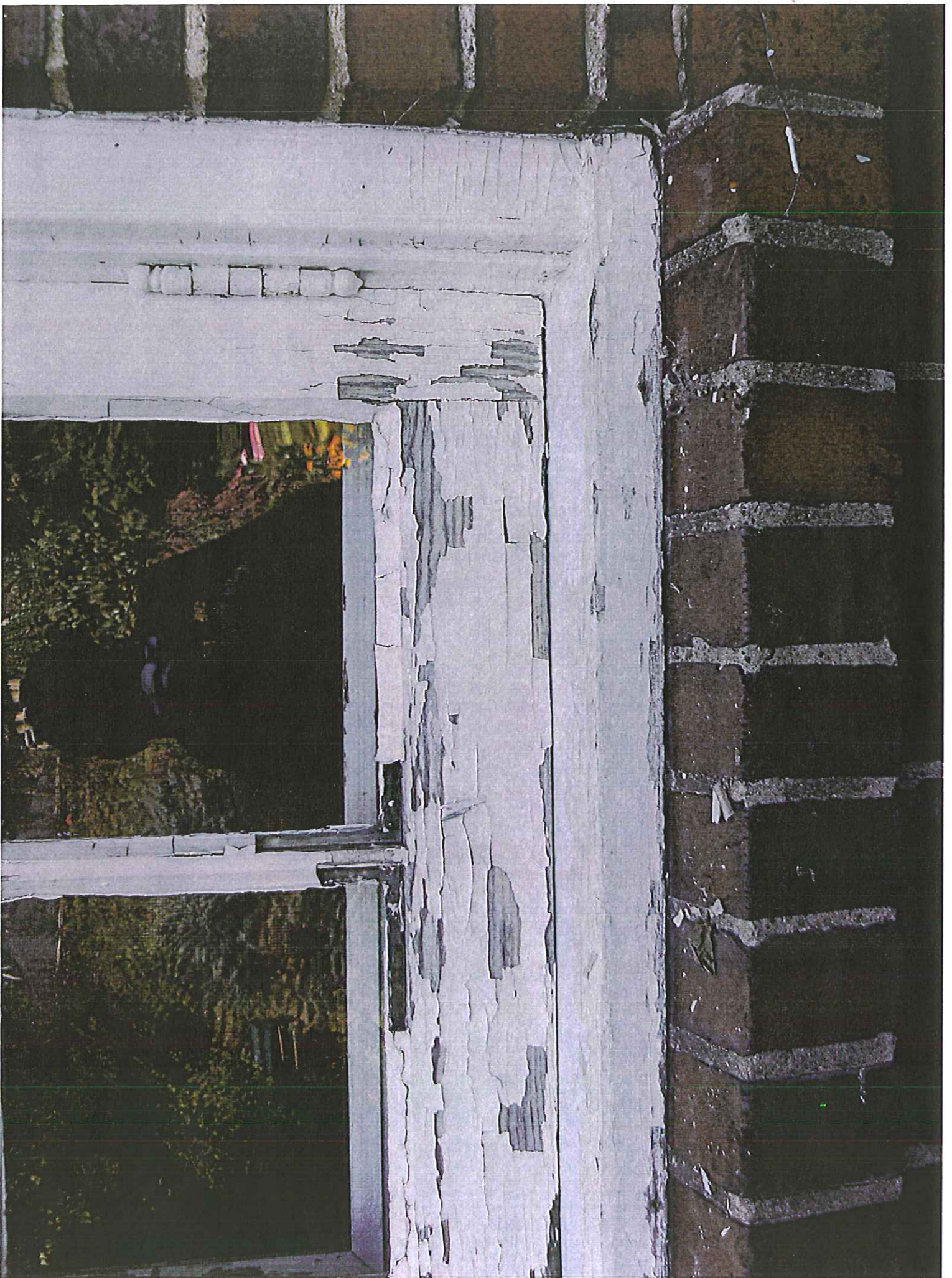
WOOD ULTIMATE INSWING FRENCH DOOR

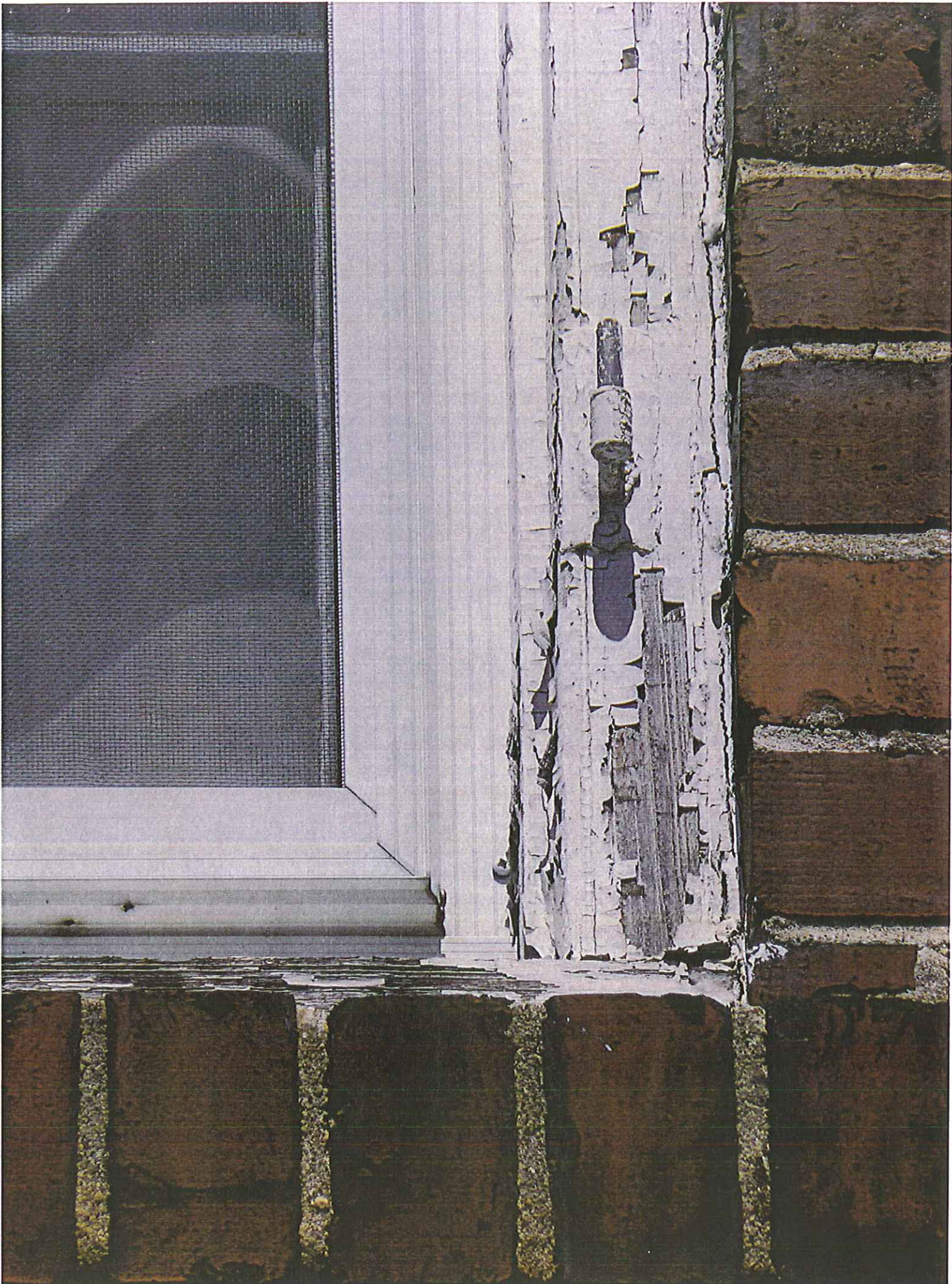
ENERGY DATA	U-Factor	R-Value	SHGC	VT	CR	ENERGY STAR
1/8" SG	0.72	14	0.49	0.50	12	
1/8" SG w/EP	0.42	24	0.44	0.46	47	
1/8" SG w/LoE EA EP	0.35	29	0.37	0.42	56	
3/4" Insulating GlassAir	0.42	24	0.44	0.46	46	
3/4" Insulating GlassLoE 272 Air	0.33	30	0.24	0.40	58	
3/4" Insulating GlassLoE 272 Argon	0.30	3.3	0.24	0.40	62	N, NC, SC, S
3/4" Insulating GlassLoE 366 Air	0.32	31	0.16	0.36	59	N, NC, SC, S
3/4" Insulating GlassLoE 366 Argon	0.30	3.3	0.16	0.36	62	N, NC, SC, S











GAARD
RESIDENCE
1722 Summit Avenue
Madison, Wisconsin

Jeff Gaudel, Author
 1720 Sycamore Court
 Phoenix, AZ 85026
 602-276-2626 x1
 602-276-2507 fax
 602-276-1154 cell

GARAGE
& PORCH
ADDITION

**SOUTH
ELEVATION**

A-6

2

POSTING SOUTH ELEVATION

Dist. Area No.
115-4 1/2

DUST, SECOND FLOOR

DOGT, FIRST FLOOR

EXPT. BASMENT
21-10

ADD ALTERNATE #1

GAARD
RESIDENCE
1721 S. 10TH AVE. N.
MILWAUKEE, WISCONSIN

DESIGNED BY
JULIUS ROSENBLUTH
1721 S. 10TH AVE. N.
MILWAUKEE, WISCONSIN
430-1-1111
JULIUS ROSENBLUTH

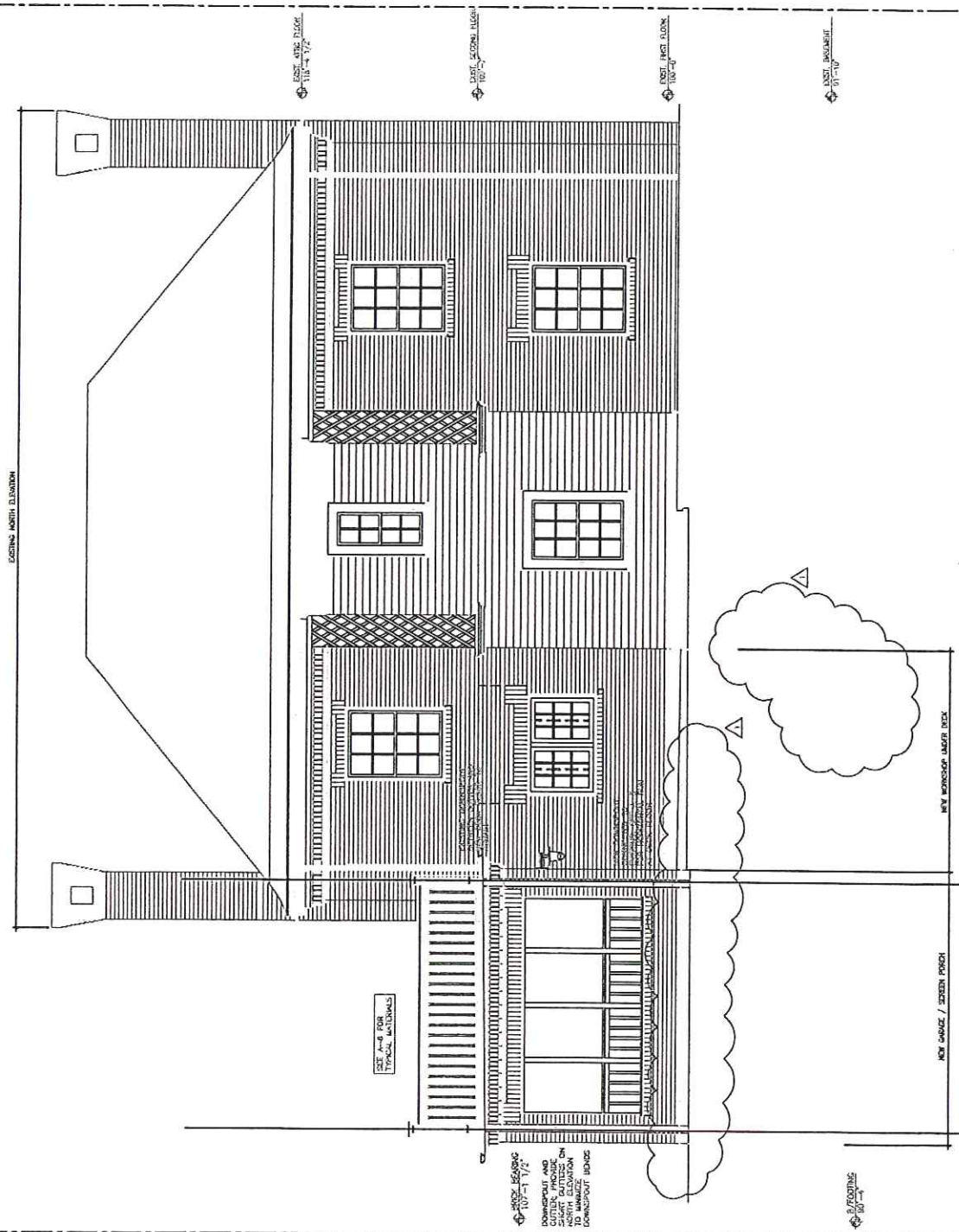
GARAGE
& PORCH
ADDITION

NO.	DESCRIPTION	DATE
1	1721 S. 10TH AVE. N.	10-1-11
2	1721 S. 10TH AVE. N.	10-1-11
3	1721 S. 10TH AVE. N.	10-1-11
4	1721 S. 10TH AVE. N.	10-1-11
5	1721 S. 10TH AVE. N.	10-1-11
6	1721 S. 10TH AVE. N.	10-1-11
7	1721 S. 10TH AVE. N.	10-1-11
8	1721 S. 10TH AVE. N.	10-1-11
9	1721 S. 10TH AVE. N.	10-1-11
10	1721 S. 10TH AVE. N.	10-1-11
11	1721 S. 10TH AVE. N.	10-1-11
12	1721 S. 10TH AVE. N.	10-1-11
13	1721 S. 10TH AVE. N.	10-1-11
14	1721 S. 10TH AVE. N.	10-1-11
15	1721 S. 10TH AVE. N.	10-1-11
16	1721 S. 10TH AVE. N.	10-1-11
17	1721 S. 10TH AVE. N.	10-1-11
18	1721 S. 10TH AVE. N.	10-1-11
19	1721 S. 10TH AVE. N.	10-1-11
20	1721 S. 10TH AVE. N.	10-1-11
21	1721 S. 10TH AVE. N.	10-1-11
22	1721 S. 10TH AVE. N.	10-1-11
23	1721 S. 10TH AVE. N.	10-1-11
24	1721 S. 10TH AVE. N.	10-1-11
25	1721 S. 10TH AVE. N.	10-1-11
26	1721 S. 10TH AVE. N.	10-1-11
27	1721 S. 10TH AVE. N.	10-1-11
28	1721 S. 10TH AVE. N.	10-1-11
29	1721 S. 10TH AVE. N.	10-1-11
30	1721 S. 10TH AVE. N.	10-1-11
31	1721 S. 10TH AVE. N.	10-1-11
32	1721 S. 10TH AVE. N.	10-1-11
33	1721 S. 10TH AVE. N.	10-1-11
34	1721 S. 10TH AVE. N.	10-1-11
35	1721 S. 10TH AVE. N.	10-1-11
36	1721 S. 10TH AVE. N.	10-1-11
37	1721 S. 10TH AVE. N.	10-1-11
38	1721 S. 10TH AVE. N.	10-1-11
39	1721 S. 10TH AVE. N.	10-1-11
40	1721 S. 10TH AVE. N.	10-1-11
41	1721 S. 10TH AVE. N.	10-1-11
42	1721 S. 10TH AVE. N.	10-1-11
43	1721 S. 10TH AVE. N.	10-1-11
44	1721 S. 10TH AVE. N.	10-1-11
45	1721 S. 10TH AVE. N.	10-1-11
46	1721 S. 10TH AVE. N.	10-1-11
47	1721 S. 10TH AVE. N.	10-1-11
48	1721 S. 10TH AVE. N.	10-1-11
49	1721 S. 10TH AVE. N.	10-1-11
50	1721 S. 10TH AVE. N.	10-1-11
51	1721 S. 10TH AVE. N.	10-1-11
52	1721 S. 10TH AVE. N.	10-1-11
53	1721 S. 10TH AVE. N.	10-1-11
54	1721 S. 10TH AVE. N.	10-1-11
55	1721 S. 10TH AVE. N.	10-1-11
56	1721 S. 10TH AVE. N.	10-1-11
57	1721 S. 10TH AVE. N.	10-1-11
58	1721 S. 10TH AVE. N.	10-1-11
59	1721 S. 10TH AVE. N.	10-1-11
60	1721 S. 10TH AVE. N.	10-1-11
61	1721 S. 10TH AVE. N.	10-1-11
62	1721 S. 10TH AVE. N.	10-1-11
63	1721 S. 10TH AVE. N.	10-1-11
64	1721 S. 10TH AVE. N.	10-1-11
65	1721 S. 10TH AVE. N.	10-1-11
66	1721 S. 10TH AVE. N.	10-1-11
67	1721 S. 10TH AVE. N.	10-1-11
68	1721 S. 10TH AVE. N.	10-1-11
69	1721 S. 10TH AVE. N.	10-1-11
70	1721 S. 10TH AVE. N.	10-1-11
71	1721 S. 10TH AVE. N.	10-1-11
72	1721 S. 10TH AVE. N.	10-1-11
73	1721 S. 10TH AVE. N.	10-1-11
74	1721 S. 10TH AVE. N.	10-1-11
75	1721 S. 10TH AVE. N.	10-1-11
76	1721 S. 10TH AVE. N.	10-1-11
77	1721 S. 10TH AVE. N.	10-1-11
78	1721 S. 10TH AVE. N.	10-1-11
79	1721 S. 10TH AVE. N.	10-1-11
80	1721 S. 10TH AVE. N.	10-1-11
81	1721 S. 10TH AVE. N.	10-1-11
82	1721 S. 10TH AVE. N.	10-1-11
83	1721 S. 10TH AVE. N.	10-1-11
84	1721 S. 10TH AVE. N.	10-1-11
85	1721 S. 10TH AVE. N.	10-1-11
86	1721 S. 10TH AVE. N.	10-1-11
87	1721 S. 10TH AVE. N.	10-1-11
88	1721 S. 10TH AVE. N.	10-1-11
89	1721 S. 10TH AVE. N.	10-1-11
90	1721 S. 10TH AVE. N.	10-1-11
91	1721 S. 10TH AVE. N.	10-1-11
92	1721 S. 10TH AVE. N.	10-1-11
93	1721 S. 10TH AVE. N.	10-1-11
94	1721 S. 10TH AVE. N.	10-1-11
95	1721 S. 10TH AVE. N.	10-1-11
96	1721 S. 10TH AVE. N.	10-1-11
97	1721 S. 10TH AVE. N.	10-1-11
98	1721 S. 10TH AVE. N.	10-1-11
99	1721 S. 10TH AVE. N.	10-1-11
100	1721 S. 10TH AVE. N.	10-1-11



NORTH
ELEVATION

A-8 2



GARD
RESIDENCE

1000

GARAGE
& PORCH
ADDITION

ADD ALTERNATE #1
HOW FIXED STORAGE (SEE
0-2 AND A-2)

EXST. FIRST FLOOR
100'-0"

LATTICE RETAINING WALL, ELEVATION

01-10 DIST. 15000

WEST
ELEVATION

A-9

0