

# City of Madison Landmarks Commission

# APPLICATION

City of Madison Planning Division, 215 Martin Luther King Jr. Blvd., Suite LL-100, P.O. Box 2985, Madison, WI 53701-2985



## 1. LOCATION

Project Address: 146 N. Prospect Ave. Madison WI 53726 Aldermanic District: \_\_\_\_\_

## 2. PROJECT

Project Title / Description: Berman Windows - Phase 2 ; Restore 5 Existing Windows, Replace 5 double-hung and 2 casement windows.

This is an application for: (check all that apply)

- Alteration / Addition to a Designated Landmark
- Land Division/Combination of Designated Landmark site
- Alteration / Addition to a building adjacent to a Designated Landmark
- Alteration / Addition to a building in a Local Historic District (specify):
  - Mansion Hill       Third Lake Ridge       First Settlement
  - University Heights       Marquette Bungalows
- Land Division/Combination in a Local Historic District (specify):
  - Mansion Hill       Third Lake Ridge       First Settlement
  - University Heights       Marquette Bungalows
- New Construction in a Local Historic District (specify):
  - Mansion Hill       Third Lake Ridge       First Settlement
  - University Heights       Marquette Bungalows
- Demolition
- Variance from the Historic Preservation Ordinance (Chapter 41)
- Referral from Common Council, Plan Commission, or other referral
- Landmark Nomination/Rescission or Historic District Nomination/Amendment  
*(Please contact the Historic Preservation Planner for specific submission requirements.)*
- Other (specify): \_\_\_\_\_

PLANNING DIVISION USE ONLY	Registrar #

## 3. APPLICANT

Applicant's Name: Sam Breidenbach Company: TDS Custom Construction

Address: 1431 Northern Court Madison, WI 53703

Telephone: (608) 251-1814 E-mail: sam@tdscustomconstruction.com

Property Owner (if not applicant): Paul Berman

Address: 146 N. Prospect Ave. Madison WI 53726

Property Owner's Signature: [Signature] Date: 4-18-16

NOTICE REGARDING LOBBYING ORDINANCE: If you are seeking approval of a development that has over 40,000 square feet of non-residential space, or a residential development of over 10 dwelling units, or if you are seeking assistance from the City with a value of \$10,000 (including grants, loans, TIF or similar assistance), then you likely are subject to Madison's lobbying ordinance (Sec. 2.40, MGO). You are required to register and report your lobbying. Please consult the City Clerk's Office for more information. Failure to comply with the lobbying ordinance may result in fines.

## 4. APPLICATION SUBMISSION REQUIREMENTS (see checklist on reverse)

All applications must be filed by 4:30 p.m. on the submission date with the Preservation Planner, the Department of Planning & Community & Economic Development, Planning Division, located in Suite LL-100, of the Madison Municipal Building, 215 Martin Luther King, Jr. Blvd. Applications submitted after the submittal date or incomplete applications will be postponed to the next scheduled filing time.

**APPLICATION SUBMISSION REQUIREMENTS CHECKLIST:**

In order to be considered complete, every application submission shall include at least the following information unless otherwise waived by the Preservation Planner.

- Landmarks Commission Application w/signature of the property owner (1 copy only).
- Twelve (12) collated paper copies 11" x 17" or smaller (via mail or drop-off) of submission materials (see below).
- Electronic files (via email) of submission materials (see below).
- Narrative Description/Letter of Intent addressed to the Landmarks Commission, describing the location of the property and the scope of the proposed project.
- Architectural drawings reduced to 11" x 17" or smaller pages which may include:
  - Dimensioned site plans showing siting of structures, grading, landscaping, pedestrian and vehicular access, lighting, signage, and other features;
  - Elevations of all sides showing exterior features and finishes, subsurface construction, floor and roof;
  - Floor Plan views of levels and roof;
  - For proposals of more than two (2) commercial or residential or combination thereof units, a minimum of two (2) accurate street-view normal perspectives shown from a viewpoint of no more than five (5) feet above existing grade.
- Any other information requested by the Preservation Planner to convey the aspects of the project which may include:
  - Photographs of existing conditions;
  - Photographs of existing context;
  - Manufacturer's product information showing dimensions and materials;
  - Other \_\_\_\_\_

**CONTACT THE PRESERVATION PLANNER:**

Please contact the Preservation Planner with any questions.

Amy Scanlon, Registered Architect  
City of Madison Planning Division  
215 Martin Luther King Jr. Blvd., Suite LL100 (physical address)  
P.O. Box 2985 (mailing address)  
Madison, WI 53701-2985  
[ascanlon@cityofmadison.com](mailto:ascanlon@cityofmadison.com)  
608 266 6552

4/18/16

TO: Madison Landmarks Commission:

TDS Custom Construction is requesting approval for Phase 2 of a project that was started in June of last year. This project is for Paul and Sierra Berman the owners of 146 N. Prospect Avenue. Phase 1 included replacing 6 double hung windows, 12 casement windows on the second story sleeping porch, 2 kitchen casement windows, and 4 of the 14 first floor sunroom casement windows.

For phase 2 TDS is proposing to,

1. Restore 4 existing double hung windows on the front of the home. This will include new ropes, new gaskets, and fixing any fitment issues with the sashes and the original storms and screens.
2. In a continuation of phase 1 the remaining first floor sunroom casements windows would be replaced with new Marvin Clad Casement inserts. Currently the existing sunroom casements are not operational. They are caulked shut and lack any hardware.
3. Also in a continuation of Phase 1 the remaining double hung windows in 2 bedrooms and living room would be replaced with Marvin Clad Insert Double Hung windows. These windows are sized to appropriately reflect the existing window measurements. (The top sash is 2" shorter than the bottom sash.)

TDS received a building permit for Phase 1 last year, BLDRPR-2015-07813, without approval from Amy Scanlon or The Landmarks Commission. We now understand that this was a mistake on the city's part. The windows for phase 2 have been purchased and the work described above is contracted. We are now asking to finish the work described above at the Berman residence. Thank you for your consideration.

Respectfully Submitted,

Sam Breidenbach  
President



# TDS BERMAN

Quote #: CMBD8WP

A Proposal for Window and Door Products prepared for:

**Shipping Address:**

WINDOW DESIGN CENTER  
6524 SEYBOLD RD  
MADISON, WI 53719-1306

**Project Description:**

*TDS/BERMAN*

**Featuring products from:**



*Window Design Center*

World-class windows Home-town service

BILL REPERT  
WINDOW DESIGN CENTER  
6524 SEYBOLD RD  
MADISON, WI 53719  
Phone: (608) 270-5126  
Fax: (608) 271-5430  
Email: billr@windowcenter.com

This report was generated on 1/15/2016 2:19:58 PM using the Marvin Order Management System, version 0002.06.00 (Current). Price in USD. Unit availability and price are subject to change. Dealer terms and conditions may apply.

## UNIT SUMMARY

The following is a schedule of the windows and doors for this project. For additional unit details, please see Line Item Quotes.

Additional charges, tax or Terms and Conditions may apply. Detail pricing is per unit.

NUMBER OF LINES: 6		TOTAL UNIT QTY: 24		EXT NET PRICE: USD		
LINE	MARK UNIT	BRAND	ITEM	NET PRICE	QTY	EXTENDED NET PRICE
1	LIVING ROOM	Marvin	Clad Ultimate Insert Double Hung IO 36" X 59 13/16" Entered as Inside Opening 36" X 59 13/16"		2	
2	SON'S ROOM	Marvin	Clad Ultimate Insert Double Hung IO 36" X 59 13/16" Entered as Inside Opening 36" X 59 13/16"		1	
3	MASTER BEDROOM	Marvin	Clad Ultimate Insert Double Hung IO 36" X 59 13/16" Entered as Inside Opening 36" X 59 13/16"		2	
4	SUN ROOM	Marvin	Clad Marvin Assembly IO 51 5/16" X 59 3/4" Entered as Inside Opening 51 5/16" X 59 3/4"		3	
5	SUN ROOM	Marvin	Clad Marvin Assembly IO 96 3/4" X 59 3/4" Entered as Inside Opening 96 3/4" X 59 3/4"		1	
6		Marvin	Clad ETO Parts  Entered as		15	

## LINE ITEM QUOTES

The following is a schedule of the windows and doors for this project. For additional unit details, please see Line Item Quotes. Additional charges, tax or Terms and Conditions may apply. Detail pricing is per unit.

Line #1	Mark Unit: LIVING ROOM	Net Price:		
Qty: 2		Ext. Net Price:	USD	

**MARVIN**  
 Windows and Doors  
 Built around you!

As Viewed From The Exterior

Entered As: IO  
 FS 35 5/8" X 60 1/8"  
 IO 36" X 59 13/16"

- Sierra White Clad Exterior
- Primed Pine Interior .....
- Clad Ultimate Insert Double Hung .....
- Inside Opening 36" X 59 13/16"
- 8 Degree Frame Bevel
- Cottage 0.481481:1.0
- Top Sash
- Sierra White Clad Sash Exterior
- Primed Pine Sash Interior
- G.S. 30 5/16" X 25 7/32"
- IG
- Low E2 w/Argon
- Stainless Perimeter and Spacer Bar
- 7/8" SDL - With Spacer Bar - Stainless .....
- Rectangular - Special Cut 4W2H
- Sierra White Clad Ext - Primed Pine Int
- Ovolo Interior Glazing Profile
- Bottom Sash
- Sierra White Clad Sash Exterior
- Primed Pine Sash Interior
- G.S. 30 5/16" X 27 5/32"
- IG - 1 Lite
- Low E2 w/Argon
- Stainless Perimeter Bar
- Ovolo Interior Glazing Profile
- Oil Rubbed Bronze Sash Lock .....
- Beige Jamb Hardware
- Aluminum Screen
- Charcoal Fiberglass Mesh
- Sierra White Surround
- 3 1/4" Jambs

Line #2	Mark Unit: SON'S ROOM	Net Price:		
Qty: 1		Ext. Net Price:	USD	

**MARVIN**  
 Windows and Doors  
 Built around you!

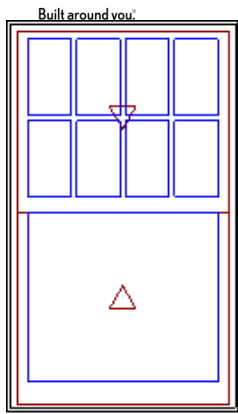
As Viewed From The Exterior

Entered As: IO  
 FS 35 5/8" X 60 1/8"  
 IO 36" X 59 13/16"

- Sierra White Clad Exterior
- Primed Pine Interior .....
- Clad Ultimate Insert Double Hung .....
- Inside Opening 36" X 59 13/16"
- 8 Degree Frame Bevel
- Cottage 0.481481:1.0
- Top Sash
- Sierra White Clad Sash Exterior
- Primed Pine Sash Interior
- G.S. 30 5/16" X 25 7/32"
- IG
- Low E2 w/Argon
- Stainless Perimeter and Spacer Bar
- 7/8" SDL - With Spacer Bar - Stainless .....
- Rectangular - Special Cut 4W2H
- Sierra White Clad Ext - Primed Pine Int
- Ovolo Interior Glazing Profile
- Bottom Sash
- Sierra White Clad Sash Exterior
- Primed Pine Sash Interior
- G.S. 30 5/16" X 27 5/32"
- IG - 1 Lite
- Low E2 w/Argon
- Stainless Perimeter Bar
- Ovolo Interior Glazing Profile
- Satin Taupe Sash Lock

Beige Jamb Hardware  
 Aluminum Screen  
 Charcoal Fiberglass Mesh  
 Sierra White Surround  
 3 1/4" Jamb

Line #3	Mark Unit: MASTER BEDROOM	Net Price:		
Qty: 2		Ext. Net Price:	USD	

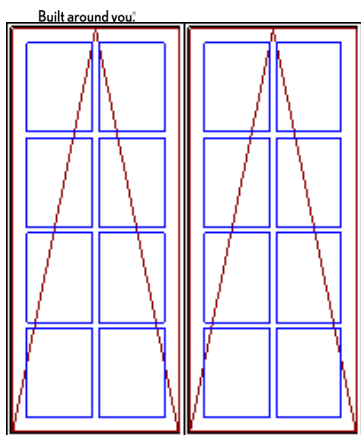


As Viewed From The Exterior

Entered As: IO  
 FS 35 5/8" X 60 1/8"  
 IO 36" X 59 13/16"

Sierra White Clad Exterior  
 Primed Pine Interior  
 Clad Ultimate Insert Double Hung  
 Inside Opening 36" X 59 13/16"  
 8 Degree Frame Bevel  
 Cottage 0.481481:1.0  
 Top Sash  
 Sierra White Clad Sash Exterior  
 Primed Pine Sash Interior  
 G.S. 30 5/16" X 25 7/32"  
 IG  
 Low E2 w/Argon  
 Stainless Perimeter and Spacer Bar  
 7/8" SDL - With Spacer Bar - Stainless  
 Rectangular - Special Cut 4W2H  
 Sierra White Clad Ext - Primed Pine Int  
 Ovolo Interior Glazing Profile  
 Bottom Sash  
 Sierra White Clad Sash Exterior  
 Primed Pine Sash Interior  
 G.S. 30 5/16" X 27 5/32"  
 IG - 1 Lite  
 Low E2 w/Argon  
 Stainless Perimeter Bar  
 Ovolo Interior Glazing Profile  
 Satin Taupe Sash Lock  
 Beige Jamb Hardware  
 Aluminum Screen  
 Charcoal Fiberglass Mesh  
 Sierra White Surround  
 3 1/4" Jamb

Line #4	Mark Unit: SUN ROOM	Net Price:		
Qty: 3		Ext. Net Price:	USD	



As Viewed From The Exterior

Entered As: IO  
 FS 50 15/16" X 59 1/2"  
 IO 51 5/16" X 59 3/4"

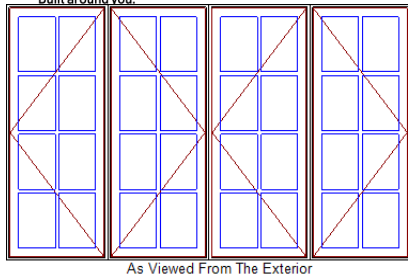
Sierra White Clad Exterior  
 Primed Pine Interior  
 2W1H - Rectangle Assembly  
 Assembly Inside Opening  
 51 5/16" X 59 3/4"  
 Assembly Frame Size  
 50 15/16" X 59 1/2"  
**Hindrance: Assembly exceeds size limitation. To confirm availability, alternative solutions, or pricing submit an assistance request or speak with a Marvin representative.**  
 Unit: A1  
 Clad Ultimate Replacement Awning - Roto Operating  
 Basic Frame 25 15/32" X 59 1/2"  
 Inside Opening 25 27/32" X 59 3/4"  
 0 Degree Frame Bevel  
 Sierra White Clad Sash Exterior  
 Primed Pine Sash Interior  
 IG  
 Low E2 w/Argon  
 Stainless Perimeter and Spacer Bar  
 7/8" SDL - With Spacer Bar - Stainless  
 Rectangular - Special Cut 2W4H  
 Sierra White Clad Ext - Primed Pine Int  
 Ogee Interior Glazing Profile  
 Standard Bottom Rail  
 Beige Weather Strip  
 Oil Rubbed Bronze Folding Handle

Oil Rubbed Bronze Multi - Point Lock  
 Interior Wood Screen .....  
 Charcoal Hi-Transparency Fbrgls Mesh  
 Primed Pine  
 Ogee Interior Screen Profile

Unit: A2 .....  
 Clad Ultimate Replacement Awning - Roto Operating  
 Basic Frame 25 15/32" X 59 1/2"  
 Inside Opening 25 27/32" X 59 3/4"  
 0 Degree Frame Bevel  
 Sierra White Clad Sash Exterior  
 Primed Pine Sash Interior  
 IG  
 Low E2 w/Argon  
 Stainless Perimeter and Spacer Bar  
 7/8" SDL - With Spacer Bar - Stainless .....  
 Rectangular - Special Cut 2W4H  
 Sierra White Clad Ext - Primed Pine Int  
 Ogee Interior Glazing Profile  
 Standard Bottom Rail  
 Beige Weather Strip  
 Oil Rubbed Bronze Folding Handle .....  
 Oil Rubbed Bronze Multi - Point Lock  
 Interior Wood Screen .....  
 Charcoal Hi-Transparency Fbrgls Mesh  
 Primed Pine  
 Ogee Interior Screen Profile  
 Factory Mull Charge .....  
 2 3/16" Jamb

**Hindrance: Jamb depth has been changed to 2 3/16".**  
 #OK TO SHIP AS ENTERED PER TRENT 1/13/16 .....  
 No Installation Method  
 # Non system generated Pricing  
 \*\*\*Note: The overall frame depth will be 1 1/16" larger than the jamb size shown above. For example, a 3 1/4" overall frame depth will have a 2 3/16" jamb.  
 \*\*\*Note: Frame Size and Basic Frame are measured from the exterior.

Line #5	Mark Unit: SUN ROOM	Net Price:		
Qty: 1		Ext. Net Price:	USD	



**Entered As: IO**  
**FS 96 3/8" X 59 1/2"**  
**IO 96 3/4" X 59 3/4"**

Sierra White Clad Exterior  
 Primed Pine Interior .....  
 4W1H - Rectangle Assembly  
 Assembly Inside Opening  
 96 3/4" X 59 3/4"  
 Assembly Frame Size  
 96 3/8" X 59 1/2"  
**Hindrance: Assembly exceeds size limitation. To confirm availability, alternative solutions, or pricing submit an assistance request or speak with a Marvin representative.**

Unit: A1 .....  
 Clad Ultimate Replacement Casement - Left Hand  
 Basic Frame 24 3/32" X 59 1/2"  
 Inside Opening 24 15/32" X 59 3/4"  
 0 Degree Frame Bevel  
 Sierra White Clad Sash Exterior  
 Primed Pine Sash Interior  
 IG  
 Low E2 w/Argon  
 Stainless Perimeter and Spacer Bar  
 7/8" SDL - With Spacer Bar - Stainless .....  
 Rectangular - Special Cut 2W4H  
 Sierra White Clad Ext - Primed Pine Int  
 Ogee Interior Glazing Profile  
 Standard Bottom Rail  
 Beige Weather Strip  
 Oil Rubbed Bronze Folding Handle .....  
 Oil Rubbed Bronze Multi - Point Lock  
 Interior Wood Screen .....  
 Charcoal Hi-Transparency Fbrgls Mesh  
 Primed Pine



Ogee Interior Screen Profile

Unit: A2 .....  
Clad Ultimate Replacement Casement - Right Hand .....  
Basic Frame 24 3/32" X 59 1/2" .....  
Inside Opening 24 15/32" X 59 3/4" .....  
0 Degree Frame Bevel .....  
Sierra White Clad Sash Exterior .....  
Primed Pine Sash Interior .....  
IG .....  
Low E2 w/Argon .....  
Stainless Perimeter and Spacer Bar .....  
7/8" SDL - With Spacer Bar - Stainless .....  
Rectangular - Special Cut 2W4H .....  
Sierra White Clad Ext - Primed Pine Int .....  
Ogee Interior Glazing Profile .....  
Standard Bottom Rail .....  
Beige Weather Strip .....  
Oil Rubbed Bronze Folding Handle .....  
Oil Rubbed Bronze Multi - Point Lock .....  
Interior Wood Screen .....  
Charcoal Hi-Transparency Fbrgls Mesh .....  
Primed Pine .....  
Ogee Interior Screen Profile

Unit: A3 .....  
Clad Ultimate Replacement Casement - Left Hand .....  
Basic Frame 24 3/32" X 59 1/2" .....  
Inside Opening 24 15/32" X 59 3/4" .....  
0 Degree Frame Bevel .....  
Sierra White Clad Sash Exterior .....  
Primed Pine Sash Interior .....  
IG .....  
Low E2 w/Argon .....  
Stainless Perimeter and Spacer Bar .....  
7/8" SDL - With Spacer Bar - Stainless .....  
Rectangular - Special Cut 2W4H .....  
Sierra White Clad Ext - Primed Pine Int .....  
Ogee Interior Glazing Profile .....  
Standard Bottom Rail .....  
Beige Weather Strip .....  
Oil Rubbed Bronze Folding Handle .....  
Oil Rubbed Bronze Multi - Point Lock .....  
Interior Wood Screen .....  
Charcoal Hi-Transparency Fbrgls Mesh .....  
Primed Pine .....  
Ogee Interior Screen Profile

Unit: A4 .....  
Clad Ultimate Replacement Casement - Right Hand .....  
Basic Frame 24 3/32" X 59 1/2" .....  
Inside Opening 24 15/32" X 59 3/4" .....  
0 Degree Frame Bevel .....  
Sierra White Clad Sash Exterior .....  
Primed Pine Sash Interior .....  
IG .....  
Low E2 w/Argon .....  
Stainless Perimeter and Spacer Bar .....  
7/8" SDL - With Spacer Bar - Stainless .....  
Rectangular - Special Cut 2W4H .....  
Sierra White Clad Ext - Primed Pine Int .....  
Ogee Interior Glazing Profile .....  
Standard Bottom Rail .....  
Beige Weather Strip .....  
Oil Rubbed Bronze Folding Handle .....  
Oil Rubbed Bronze Multi - Point Lock .....  
Interior Wood Screen .....  
Charcoal Hi-Transparency Fbrgls Mesh .....  
Primed Pine .....  
Ogee Interior Screen Profile

Factory Mull Charge .....  
2 3/16" Jamb

**Hindrance: Jamb depth has been changed to 2 3/16".**

#OK TO SHIP AS ENTERED PER TRENT 1/13/16.....  
No Installation Method  
# Non system generated Pricing  
\*\*\*Note: Frame Size and Basic Frame are measured from the exterior.  
\*\*\*Note: The overall frame depth will be 1 1/16" larger than the jamb size shown above. For example, a 3 1/4" overall frame depth will have a 2 3/16" jamb.

Line #6 Qty: 15	Mark Unit:	Net Price: Ext. Net Price:	USD	
--------------------	------------	-------------------------------	-----	--



Marvin Clad Ultimate Casement  
18651134 A1533 3/4" PANNING 150" SA.....  
\*\*\*Note: ETO: Non-System Generated Pricing

Project Subtotal Net Price: USD  
5.500% Sales Tax: USD  
Project Total Net Price: USD

# Clad Insert Double Hung

## Unit Features

Clad Ultimate Insert Double Hung: CINDH

Clad Ultimate Transom Windows: CINDHT

Clad Ultimate Picture Windows: CINDHP

### Frame:

- Frame depth is 3 1/4" (83)
- Sill thickness, head and side jambs are 21/32" (17) with 1 5/16" (33) wide composite jambs.
- Sill options available: 8 degree or 14 degree bevel at the bottom or a flat sill with 1 5/32" (29) thickness.

### Sash:

- Nominal sash thickness: 1 5/8" (41) with 11/16" (18) insulating glass. For Tri-pane glass, 1 7/8" (48) sash is required with 7/8" (22) glazing.
- Picture sash thickness: 2" (51) with 1" (25) glass.
- Operating sash are removable for cleaning.
- Incorporates traditional wide bottom rail in bottom sash - 3 9/16" (90).
- Single Hung conversion kits available. Cottage and oriel sash configuration available.

### Hardware:

- Sash lock and keeper: Open style crescent cam lock with sash release lever, surface mounted. Color: Satin Taupe. Optional colors: Bronze, White, Brass, Antique Brass, Satin Chrome, Satin Nickel and Oil Rubbed Bronze.
- Balance system: block and tackle coil spring.
- The jamb track is a vinyl extrusion. Color: Beige. Optional color: White.

### Weather Strip:

- Jamb weather strip is a foam type weather strip which seals against both the bottom sash and top sash stiles.
- Top sash has a weather strip on the check rail that seals to the bottom sash check rail when the sash lock is engaged.
- The top rail seals against a weather strip on the head jamb parting stop.
- The bottom sash has a weather strip on the bottom of the lower rail which seals against the sill.

### Insect Screens:

- Standard Screen is roll formed aluminum.
- Aluminum screen: Full Screen standard, half screen optional.
- Aluminum surround to match exterior frame clad color.
- Screen mesh: Standard is Charcoal Fiberglass. Optional: Charcoal High Transparency Fiberglass Mesh, Charcoal Aluminum Wire, Black Aluminum Wire, Bright Aluminum Wire, or Bright Bronze Aluminum Wire.
- Optional Double Hung Magnum Screen, extruded aluminum screen.

### Glass and Glazing:

- Glazing method: Insulating
- Glazing seal: Silicone bedding on the interior, acrylic foam adhesive tape on the exterior
- Standard glass is insulating Low E2 Argon or Air.
- Insulating glass will be altitude adjusted with capillary tubes for higher elevations. Argon gas is not available for elevations that require capillary tubes.

### Optional Glass

- Low E1 Argon or Air, Low E3 Argon or Air, Clear, Laminated, Tempered, Obscure, Bronze tint, Gray tint, Reflective Bronze, decorative glass options.
- 7/8" or 1" Tripane Low E1 outer piece and Low E1 Argon inner piece
- 7/8" or 1" Tripane Low E1 outer piece and Low E1 Krypton-Argon inner piece
- 7/8" or 1" Tripane Low E2 outer piece and Low E2 Argon inner piece
- 7/8" or 1" Tripane Low E2 outer piece and Low E2 Krypton-Argon inner piece
- 7/8" or 1" Tripane Low E3 outer piece and Low E1 Argon inner piece
- 7/8" or 1" Tripane Low E3 outer piece and Low E1 Krypton-Argon inner piece

## Clad Insert Double Hung

### Unit Features

#### CE Optional Glass

- Glazing method: Insulating
- Glazing seal: Silicone glazed
- Standard Glass is 11/16" (18) insulating Low E2 Argon or air
- Optional dual glazing available: Low E1 Argon or air, Low E3 Argon or air, Low E2/ERS Argon or air, Low E2/ERS Argon or air, Clear, Laminated Clear, tints, tempered and sandblasted
- 7/8" (22) or 1" (25) Tripane glass types: Low E1/E1 Argon or Krypton-Argon, Low E2/E2 Argon or Krypton-Argon, Low E3/E1 Argon or Krypton-Argon
- Glass panes available in 3, 4, and 6 mm thicknesses
- Laminated panes available in 7.0 and 7.8 mm thicknesses
- Glazing will be altitude adjusted for higher elevations, Argon, Argon-Krypton, and Krypton gas not included

#### CE Mulling Options

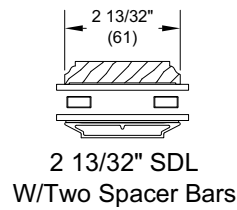
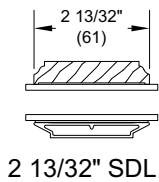
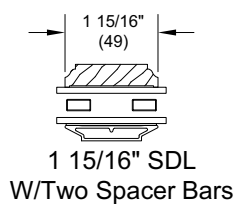
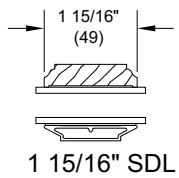
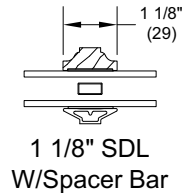
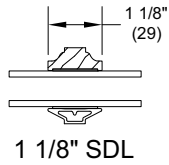
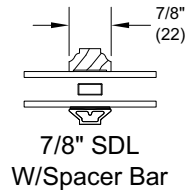
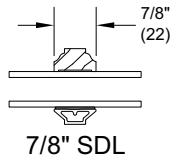
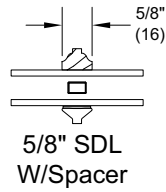
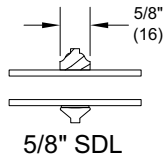
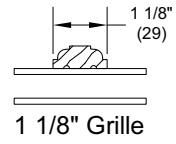
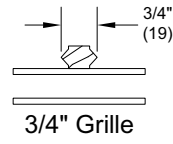
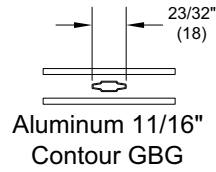
- Mullled assemblies up to 70 3/4" (1797) x 80 3/8" (2042) as 1H x multi-width
- Mullled assemblies with 1" (25) LVL or 3/8" (10) aluminum mull reinforcement up to 124 7/8" (3172) x 100 3/8" (2550) as a multi-wide or multi-high assembly

#### Accessories:

- Installation Accessories
  - Factory installed vinyl sill fin (8 degree sill option only)
  - Two (2) 5/16" - #10 x 2 1/2" jamb jack screws
  - Four (4) #7 x 2" Phillips pan-head installation screws
  - Two (2) jamb liner check rail pads
  - Two (2) color matched clad jamb plugs (exterior).
  - Two (2) wood flat head plugs (interior).
- Sash Lifts
  - High pressure zinc die-cast.
  - Color: Satin Taupe. Optional colors: Bronze, White, Brass, Antique Brass, Satin Chrome, Satin Nickel and Oil Rubbed Bronze.
- Aluminum Extrusions
  - Profiles: Frame Expander, Extruded Panning, Mullion covers as indicated by drawings.
  - Finish: Fluoropolymer modified acrylic topcoat applied over primer. Available in standard, select, and custom colors.

# Clad Insert Double Hung

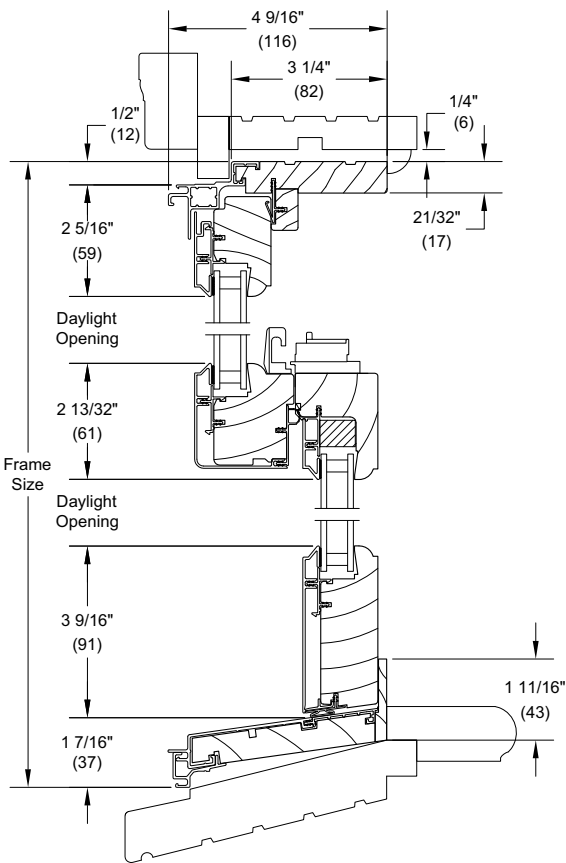
## Standard Divided Lite Option



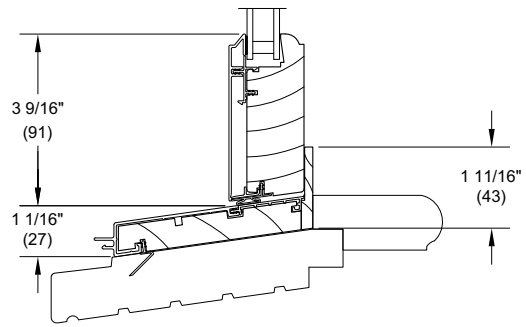
# Clad Insert Double Hung

## Section Details: Operating

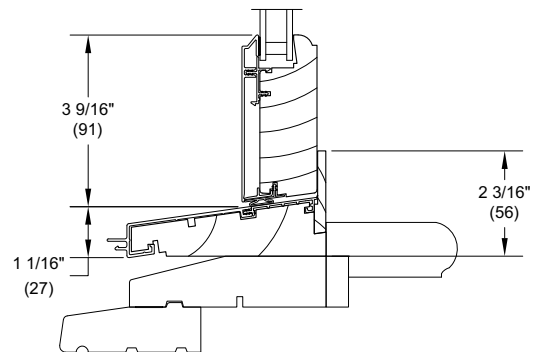
Scale: 3" = 1' 0"



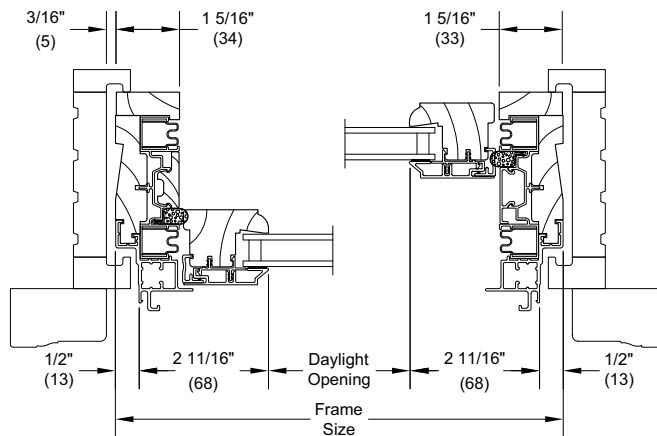
**14 Degree Bevel Sill Option**  
Installed in existing frame



**8 Degree Bevel Sill Option**  
Installed in existing frame



**Flat Frame Sill Option**  
Installed in existing frame

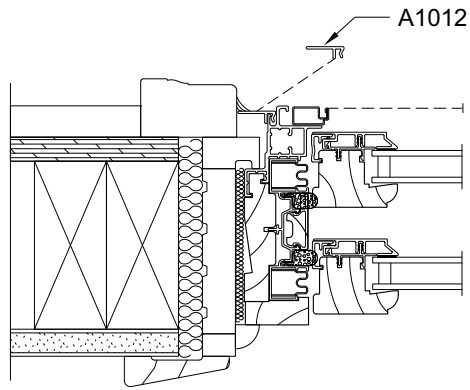


**Jamb**  
in existing frame

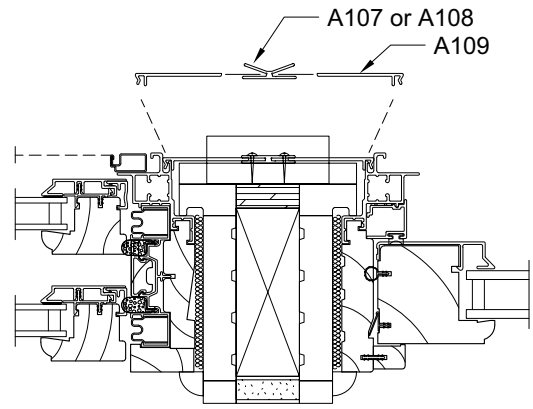
# Clad Insert Double Hung

## Clad Application

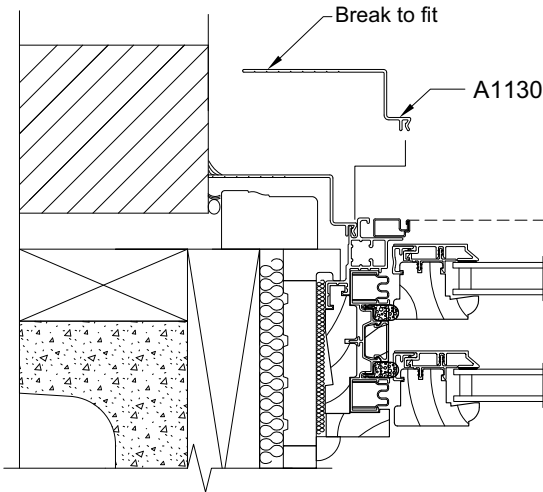
Scale: 3" - 1' 0"



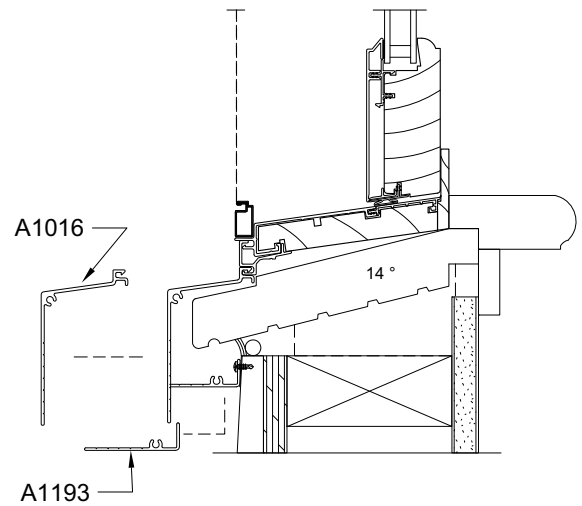
Frame Expander



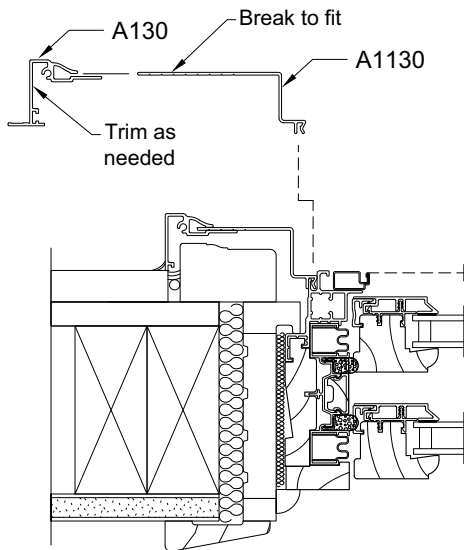
Frame Expander With Mullion Expander



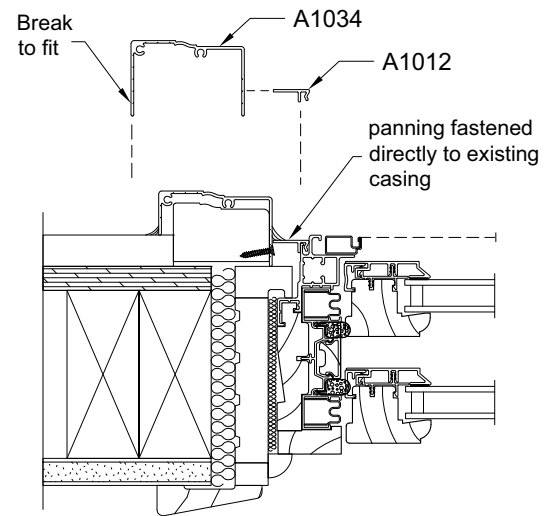
Panning-(Masonry shown)



Sill Panning



Clad Adjustable Brick Mould Casing



Panning-(BMC shown)

# Clad Ultimate Casement, Awning and Picture

## Unit Features

Clad Ultimate Casement: CUCA

Clad Ultimate Awning: CUAWN

Clad Ultimate Casement Picture: CUCAP

Clad Ultimate Replacement Casement: CURCA

Clad Ultimate Replace Awning: CURAWN

Clad Ultimate Replacement Casement Picture: CURCAP

Contemporary Casement: CCNTPRYCA

Contemporary Awning: CCNTPRYAWN

### **CUCA, CURCA, CCNTPRYCA, CUAWN, CURAWN, CCNTPRYAWN Hardware:**

- Folding handles are standard
  - Color: Satin Taupe
    - Optional colors: White, Bronze, Satin Chrome, Satin Nickel, Oil Rubbed Bronze, Brass, Antique Brass
- Locks used are a concealed multi-point sequential system
- Stainless steel packages are available for coastal application
- Aluminum pole crank (Optional)
  - Color: mill finish
  - Sizes: 60" (1524), 96" (2438), 138" (3505)

*NOTE: Pole crank operate locks*

### **CUCA/CURCA and CCNTPRYCA Hardware:**

- Casement operator includes a crank hardware system that allows the window to open to a full 90 degrees with a minimal reduction of egress net clear opening
  - All steel is covered with an E-Gard™ protection coat and the standard track is stainless steel
  - Operation force at handle is 5 lbs. (2 kg) or less
- Casement hinges allow the user the ability to slide the sash across the frame opening so the sash exterior will rotate toward the user for the easy wash mode
  - Each unit includes one single arm operator or dyad operator depending upon the width of the unit
  - Frame OM width of 20" (508) to under 24" (610) use an 18" (457) wash/egress hinge
  - Frame OM widths greater than 24" (610) use a 22" (559) wash/egress hinge
  - Frame OM widths less than 20" (508) use a dyad hinge (dyad hinges do not have the special easy wash mode feature)
- Factory installed Window Opening Control Device (WOCD)
  - The standard operation of the WOCD shall limit the operation of the sash to an opening of 4" (102) or less
  - The tether shall be able to detach from the lock housing by a two step function actuation to allow normal operation of the unit
  - The tether shall be able to re-engage when the unit is fully closed
  - Hardware meets the ASTM F2090-10
  - Minimum operable unit size: 26" (660) x 19 1/4" (489)
  - Maximum operable unit size: 40" (1016) x 92" (2337) - unit size width is greater than 36" (914)
  - Maximum operable unit size: 36" (914) x 96 1/8" (2442) - unit size is less than or equal to 36" (914)
  - WOCD locking assembly:
    - Factory installed
    - Die-cast
    - Color: Satin Taupe, Bronze, White, Oil-Rubbed Bronze, Brass, Satin Nickel, Antique Brass, Polished Chrome, Satin Chrome
  - WOCD tether assembly:
    - Factory installed
    - Glass filled nylon
    - Color: matched to the e-coat finish on casement hardware
- Hinges used are steel coated with an E-Gard™ protection coat and hinge track is stainless steel
- Each unit contains two hinges that connect stiles of sash to jamb material
- Hinges are designed to support up to a 210 lb. (95 kg) sash
- Optional power drive operator:
  - Motor is metal cased
  - Motor cover is plastic
  - Cover colors: Satin Taupe, White and Bronze
  - Field installed
  - Available for all size CN 16 and wider
- Remote control available as an option



# Clad Ultimate Casement, Awning and Picture

## Unit Features

### CUAWN/CURAWN and CCNTPRYAWN Hardware:

- Optional Op-O-Lock Hardware (only available with CUAWN)
  - Requires a folding handle
  - Minimum frame OM width is 28" (711)
  - Minimum frame height is 15 1/8" (384)
  - Maximum frame OM width is 72" (1829)
  - Maximum frame OM height is 47 1/8" (1197)
- Custodial Sash Limiters
  - If Casement frame OM is larger than 36" (914) x 102" (2591), 40" (1016) x 92" (2337), or 44" (1118) x 71.125" (1807) custodial limiters will be applied, limiting travel
  - If Awning frame OM is larger than 72" (1829) x 72" (1829) custodial limiters will be applied, limiting travel

### Interior Shades:

- Cellular shade is attached to the window with a removable surround system that houses the cellular shade system and screen
  - Shade cartridge is removable and replaceable
  - One shade per sash opening
  - Shade control: top down, bottom up
  - Egress is reduced by 1" (25) when shade system is installed in unit
  - Wood screen and retractable screen options are not available with interior shade system
- Wood surround frame
  - Species: Pine, Mahogany, Mixed Grain Douglas Fir, Vertical Grain Douglas Fir, Cherry or White Oak
  - Roll formed screen: Satin Taupe (standard), White or Bronze (optional)
- Cellular shade
  - Single non-fire rated hexagonal honeycomb (cellular) 3/4" (19)
  - Semi-opaque fabric (light filtering)
    - Colors: Driftwood, Marigold, Almond, Rose, Denim, Biscuit, Champagne, Moss, Cinnamon, Silver, White, Stone, Tan, Ivory, Eggshell
  - Opaque fabric (blackout)
    - Colors: White, Stone, Tan, Ivory, Eggshell
- Order options:
  - Ship separate: shade system packages separate and ships same time as the unit
  - Ship later: shade system at a later date chosen by the customer
    - Shade option must be chosen at the time of unit order
    - Fabric opacity and color can be chosen at later date
  - Retro fit: ordered as a complete shade system through configured parts

### Optional Glass:

- 1" Tripane Low E1 outer piece and Low E1 Argon inner piece
- 1" Tripane Low E1 outer piece and Low E1 Krypton-Argon inner piece
- 1" Tripane Low E2 outer piece and Low E2 Argon inner piece
- 1" Tripane Low E2 outer piece and Low E2 Krypton-Argon inner piece
- 1" Tripane Low E3 outer piece and Low E1 Argon inner piece
- 1" Tripane Low E3 outer piece and Low E1 Krypton-Argon inner piece

### CE Optional Glazing:

- Optional Tripane glass types: Low E1/E1 Argon or Krypton-Argon, Low E2/E2 Argon or Krypton-Argon, Low E3/E1 Argon or Krypton
- Glass panes available in 3, 4, and 6 mm thicknesses
- Glazing will be altitude adjusted for high elevations, Argon, Argon-Krypton, and Krypton gas not included

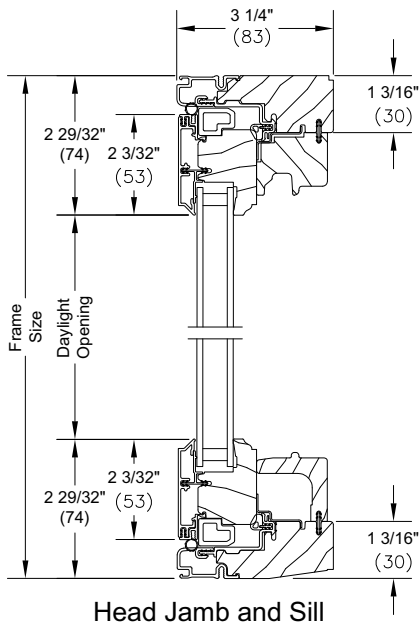
### CE Mulling Options:

- Muller assemblies up to 64" (1626) x 71 1/8" (1807) as 1H x multi-width
- Muller assemblies with 1" (25) LVL or 3/8" (10) aluminum mull reinforcement up to 122" (3099) x 104 1/4" (2648) as a multi-wide or multi-high assembly

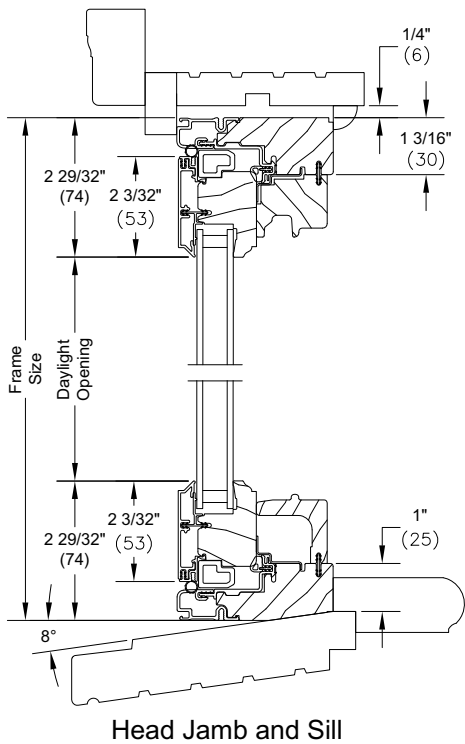
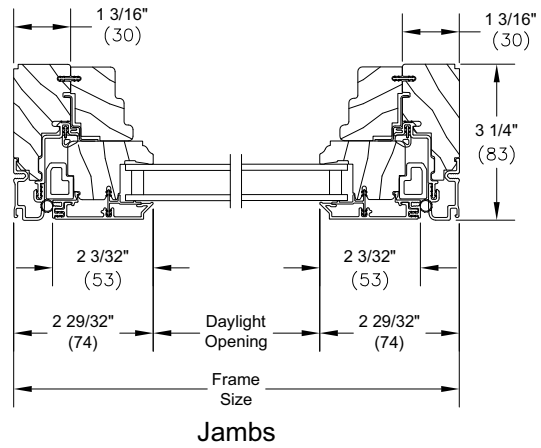
*Clad Ultimate Casement, Awning and Picture*

**Section Details: Replacement CA/AWN Operating/Picture - DH Frame w/ Sloped Sill**

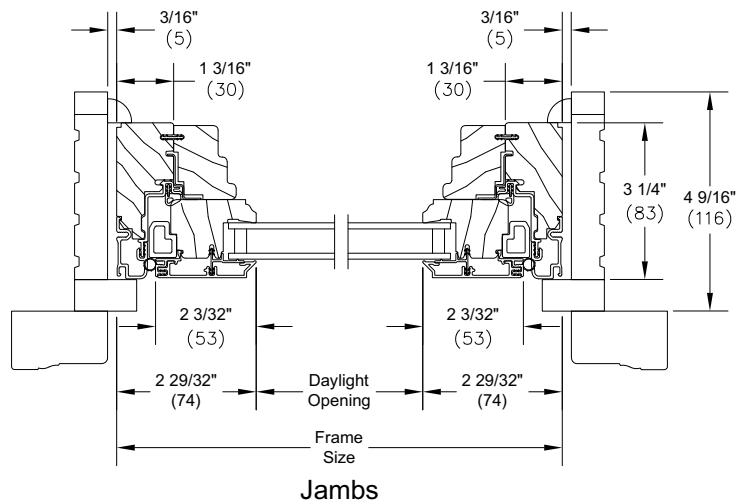
Scale: 3" = 1' 0"



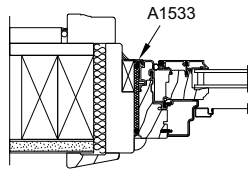
**CURCA Picture - Casement Frame w/sloped Sill**



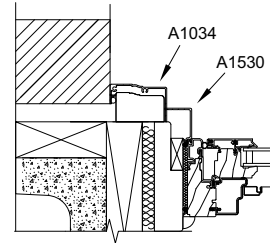
**CURCA Picture - Double Hung Frame w/sloped Sill**



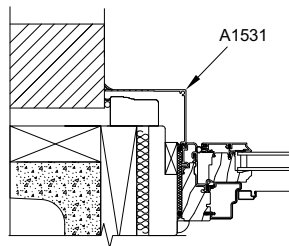
**Section Details: Clad Applications - Replacement**



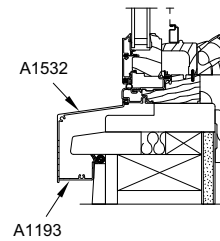
Frame Expander



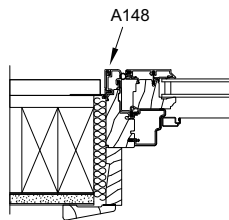
Panning (BMC shown)



Panning (Masonry shown)



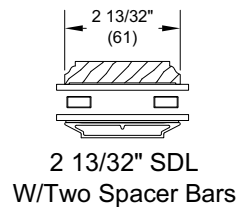
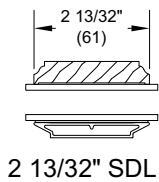
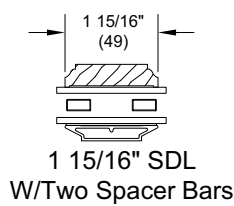
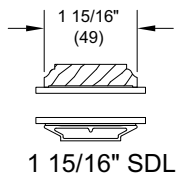
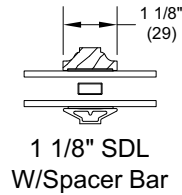
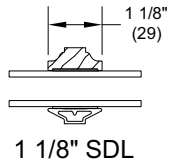
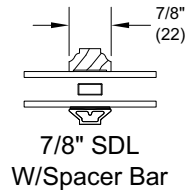
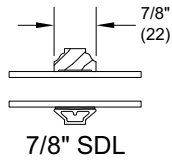
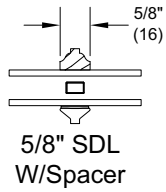
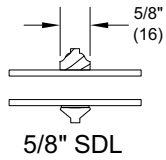
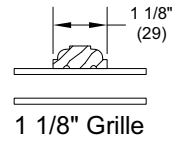
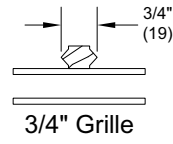
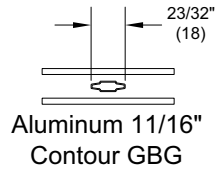
Sill Panning



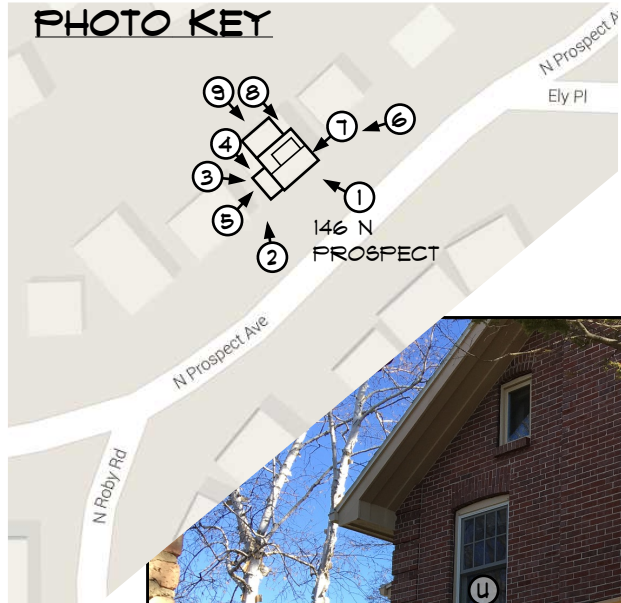
Panning with Kerf Cover

# Clad Insert Double Hung

## Standard Divided Lite Option



**PHOTO KEY**



DOUBLE HUNG U  
PREVIOUSLY  
REPLACED

REPLACE  
DOUBLE HUNG V

EXISTING  
ATTIC AND  
BASEMENT  
WINDOWS  
TO REMAIN

2 REPLACE EXISTING  
CASEMENT UNITS E & F



1 RESTORE FRONT DOUBLE HUNG  
WINDOWS A-D

WINDOW W TO REMAIN



3 PREVIOUSLY REPLACED  
CASEMENT UNITS G & H



4 PREVIOUSLY REPLACED  
CASEMENT UNITS G & H



5 REPLACE EXISTING  
CASEMENT UNITS E



1431 NORTHERN CT  
MADISON, WI 53703  
(608) 251-1814

WINDOW RESTORATION  
AND REPLACEMENT

PAUL AND SIERRA BERMAN  
146 N PROSPECT AVE  
MADISON, WI 53726

SOUTH AND WEST WINDOWS

DATE: 04/18/2016

SHEET NO.

01

PREPARED BY  
DONOVAN OF 02



EXISTING  
ATTIC AND  
BASEMENT  
WINDOWS  
TO REMAIN

6 EXISTING DOUBLE HUNG  
WINDOWS I-L TO BE REPLACED



MODIFY DECK  
FOR TREE  
GROWTH

9 PREVIOUSLY REPLACED  
WINDOWS M-Q

EXISTING WINDOWS  
R,S,T,X TO REMAIN



7 EXISTING DOUBLE HUNG  
WINDOW "I" TO BE REPLACED



8 PREVIOUSLY REPLACED  
DOUBLE HUNG WINDOW "M"



1431 NORTHERN CT  
MADISON, WI 53703  
(608) 251-1814

WINDOW RESTORATION  
AND REPLACEMENT  
PAUL AND SIERRA BERMAN  
146 N PROSPECT AVE  
MADISON, WI 53726

EAST AND NORTH WINDOWS

DATE: 04/18/2016

SHEET NO.

02

PREPARED BY  
DUNOUD OF 02