



Public Trees & Greenspace within the City of Madison

City of Madison Streets & Urban Forestry Division,
Engineering Division, and
Parks Division.

A photograph of a residential street lined with mature trees. The trees are lush green and form a canopy over the road. In the background, there are houses and parked cars. A semi-transparent text box is overlaid in the upper center of the image.

**Urban Forestry moved from
Parks Division to Streets
Division in Jan 2020.**

Why?

Operational Efficiency

Skilled machine operators handle stump grubbing, brush hauling, brush chipping and more so arborists can do more tree work.

Semi-skilled Public Works Laborers assist with tree planting, watering

8700 hours, or \$250k, of assistance from Streets to Urban Forestry annually.



Storm Response

New model for response made possible by inter-agency cooperation with Urban Forestry section within Streets Division.



2024 Storm

Over 1,000 unique calls - largest event in decades
At least 270 emergency-level calls (roads mostly or completely blocked, tree on house, etc)

Stormwater Utility Land



Public lands greenspace to manage stormwater services (drainage and water quality).

Stormwater Utility Land: Land Acquisition

Dedicated through Subdivision
Stormwater Requirements for:

- Water Quality
 - Infiltration
 - Sediment and pollution capture
- Flood control
- Stormwater conveyance in environmental corridors

Or Acquired through Purchase

- Lower Badger Mill Creek
- Marty Farm



Stormwater Utility Public Outlot can include ponds, greenways, and infiltration basins. Public Outlot Dedicated with 1st Addition to 1000 Oaks Development

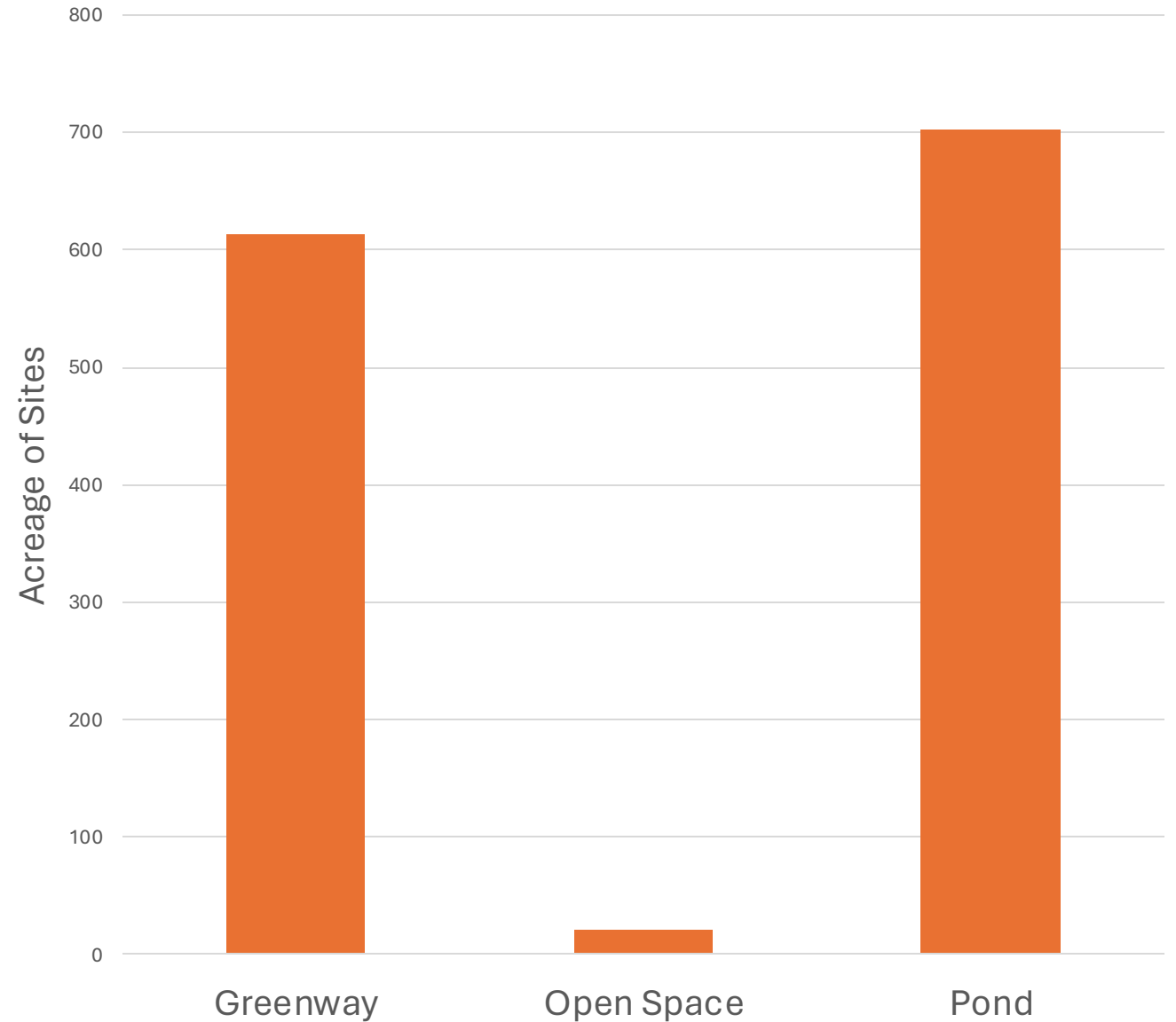
Stormwater Utility Land: Ponds & Greenways

Ponds

- Infiltration Basins
- Bioretention Basins
- Dry Detention Ponds
- Wet Detention Ponds
- Rain Gardens

Greenways

- Stormwater Conveyance
- Intermittent Streams



Stormwater Utility Land: Part of Larger Open Space System

- **Primary Goal is Stormwater Management**
 - This land is also a component of larger citywide initiatives and priorities.
- **Pollinator Habitat & Biodiversity**
 - All new ponds seeded and restored to native prairie/wetland species.
- **Urban Canopy**
- **Public Greenspace and Recreation**
 - Lands are open to the public.
 - Public path and access for maintenance and emergency repairs

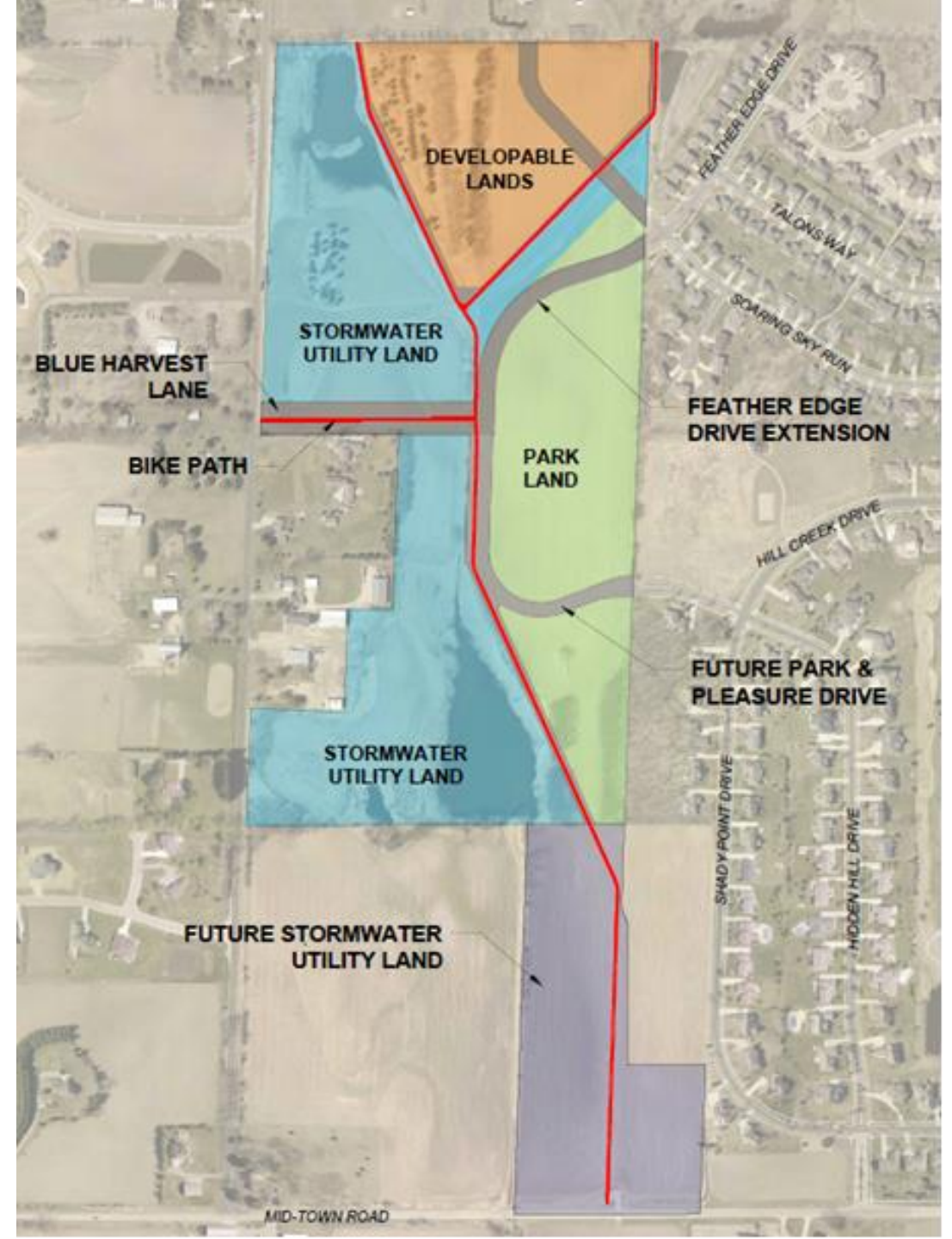
Photo of Robin Greenway



Stormwater Utility Land: Part of Larger Open Space System

Lower Badger Mill Creek Ponds

- Gravel paths for access and walking
- Master planning with Parks for joint recreational amenities
- Ecological restoration and habitat on stormwater portion
- Native plant restoration begins this year
 - Wetland and aquatic emergent plants
 - New trees (oaks, birch, hickory)
 - Native flowering shrubs
 - Native plant seed
 - Two years of maintenance by an ecological restoration firm



A field of tall green grass with several pink coneflowers in bloom. The flowers have dark brown centers and long, thin, light pink petals. In the background, there is a green field with some yellow flowers and a small structure or building.

Stormwater Utility Land: Vegetation Management Plan

Specific issues related to stormwater
(erosion, flooding, infiltration, waterways)

Process started Fall 2023:

- 3 Public Listening Sessions
- Board of Public Works updates
- Online survey
- Volunteer experts
- Technical question summary posted on website
- Focus group workshop: 5/29/2024
- More details available on the Engineering Division's [Vegetation Management projects webpage](#).

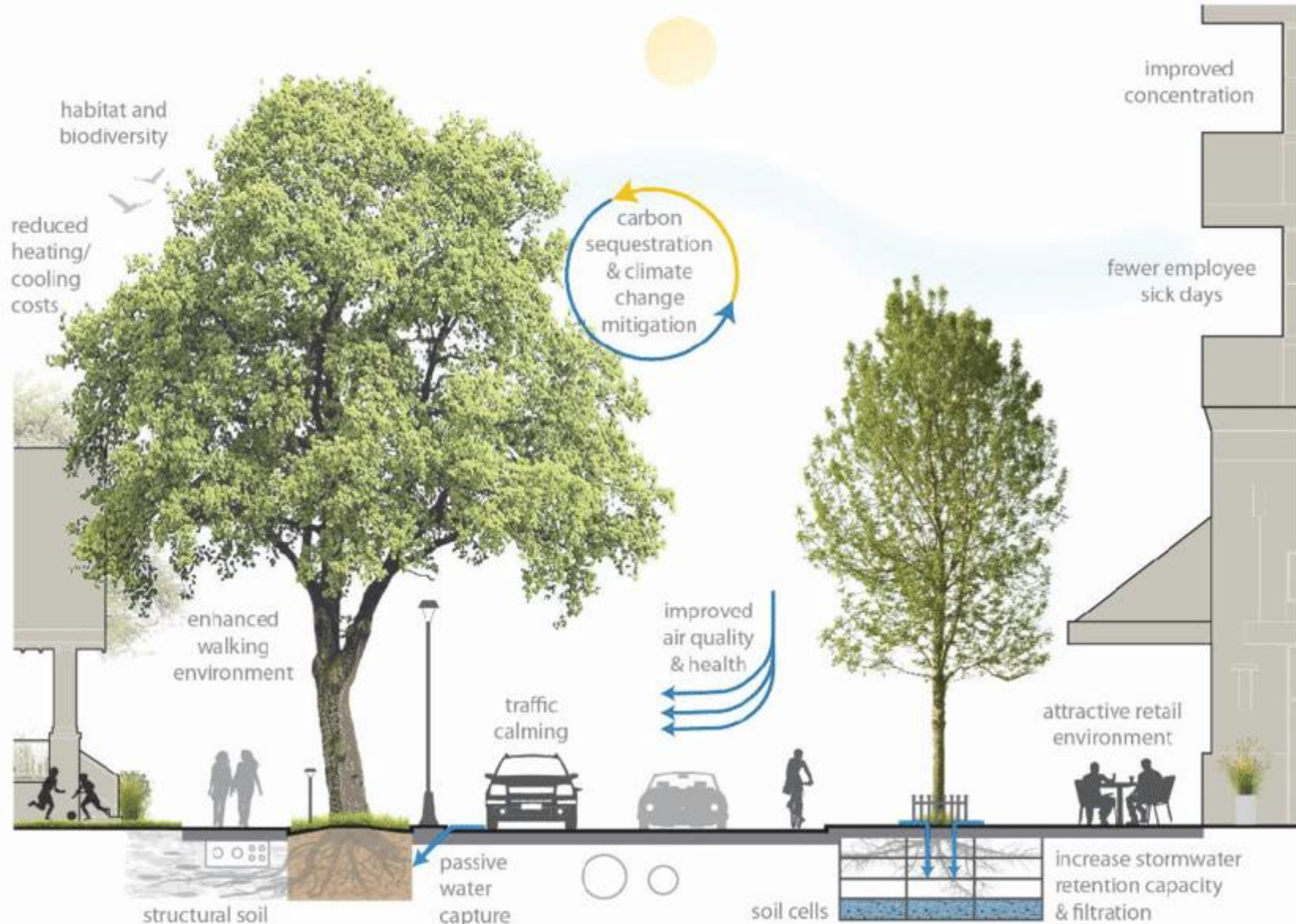
Urban Forestry

100,000 Street Trees

- Tree Planting
- Maintenance
- Removal
- Tree protection
- Emergency response

Urban Tree Benefits

- Environmental
- Economic
- Social



Additional benefits include:

- | | | | |
|--------------------------------------|------------------------------|------------------------|-------------------|
| ▶ Erosion control/bank stabilization | ▶ Aesthetic + beautification | ▶ Connection to nature | ▶ Crime reduction |
| ▶ Wind + noise buffer | ▶ Cultural + Spiritual | ▶ Social strengthening | ▶ Privacy |
| | | ▶ Recreation | ▶ Food production |



Tree Planting

- Plant 2,000-3,000 trees annually
- Select from 72 unique species
- Prefer large-canopy species when possible

Tree Maintenance

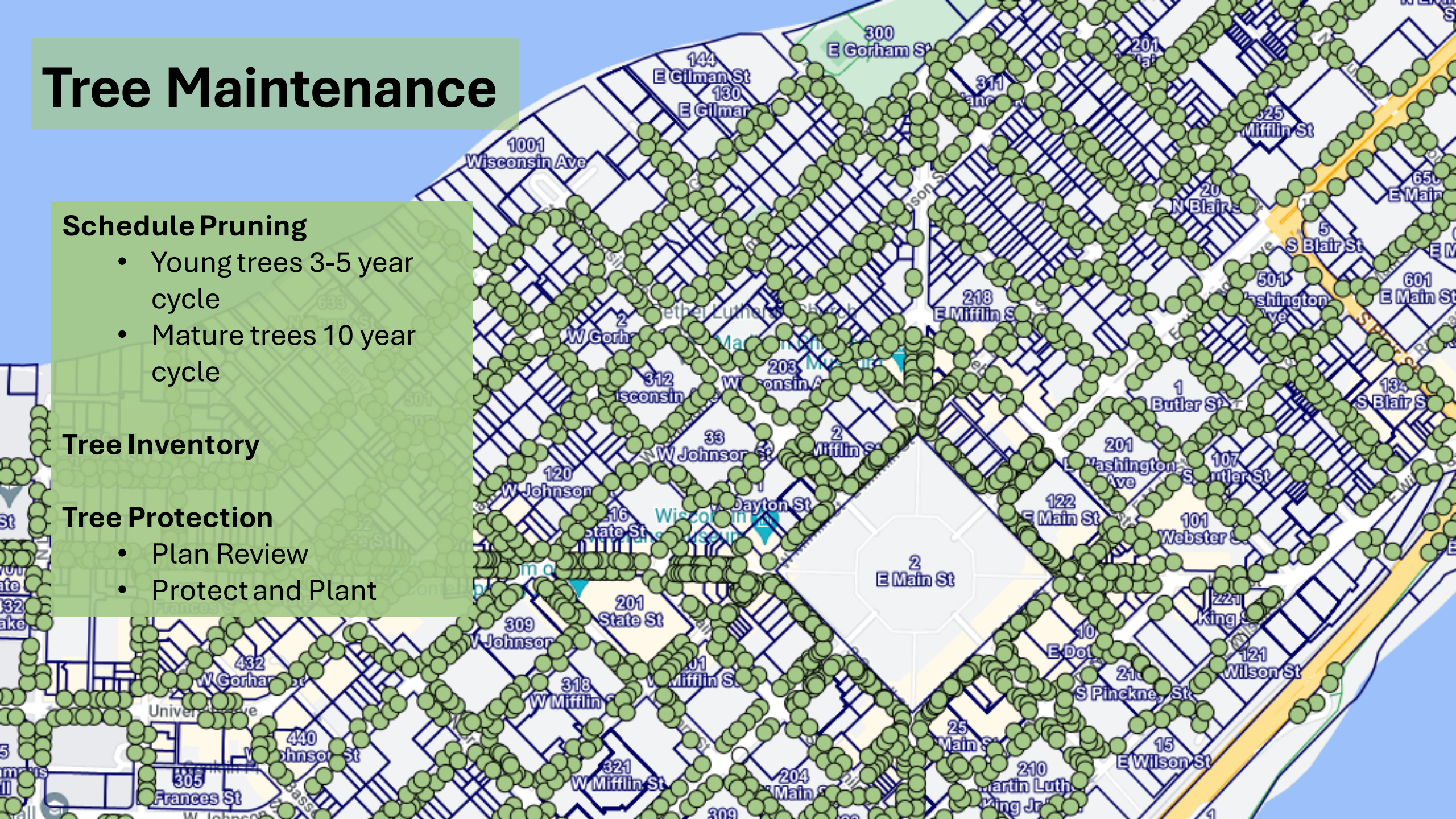
Schedule Pruning

- Young trees 3-5 year cycle
- Mature trees 10 year cycle

Tree Inventory

Tree Protection

- Plan Review
- Protect and Plant



Storm Response





Pest Management

**Emerald Ash Borer
(EAB) treatments**

**Spongy Moth
response**

Injection of a mature oak to protect against spongy moth caterpillars

Ongoing Collaborative Spongy Moth Response: Forestry, Parks & Engineering



Summer 2023

- Free burlap to residents to wrap around private trees
- Reporting for specific west side areas

Winter 2023/24

- Horticulture oil
- Mailings

Spring 2024

- Selected large oak injection (Parks and Engineering locations)
- Application from ground vehicles of BtK in Kenosha Greenway and southern portion of Glen Oak Hills park
- Monitoring

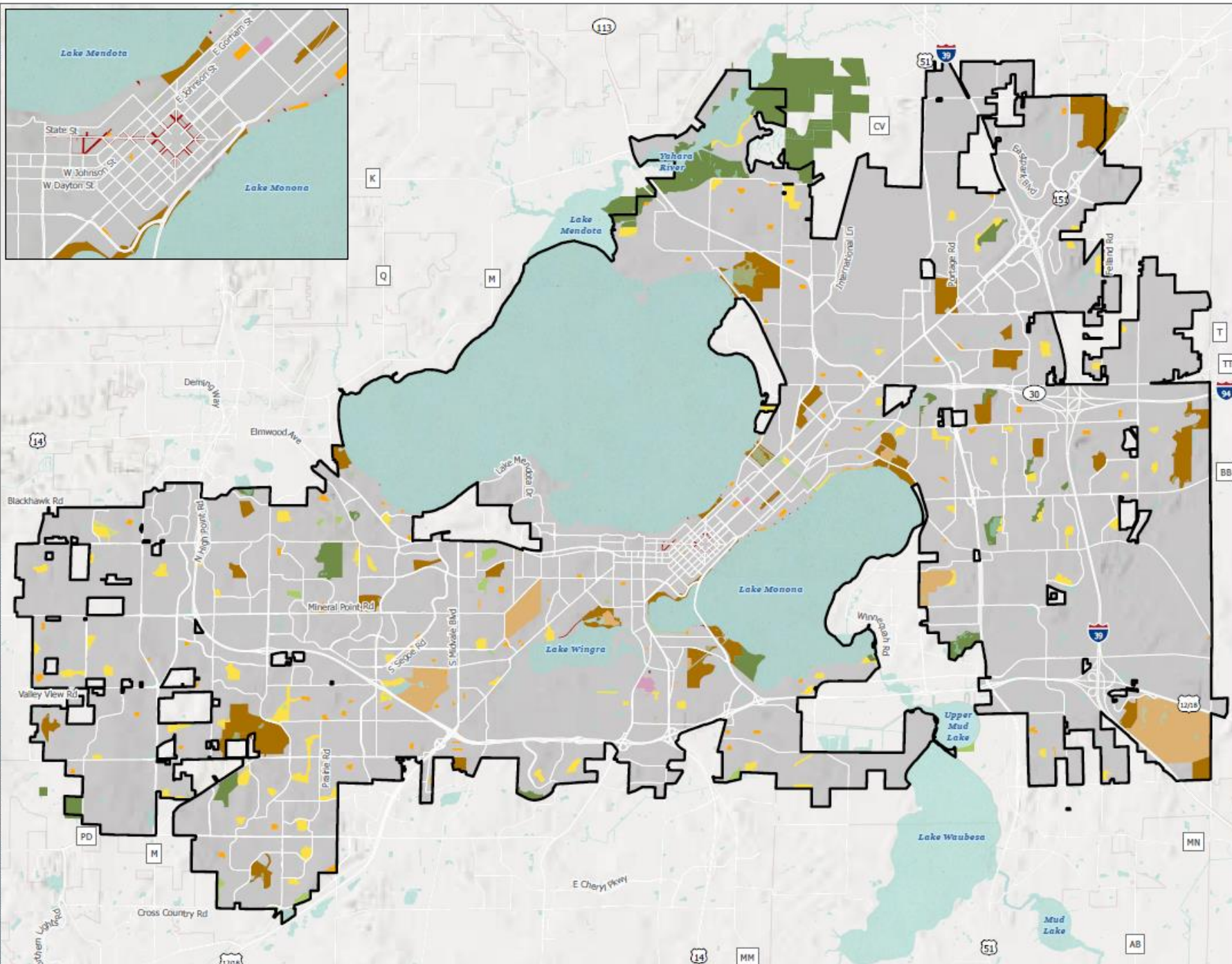
Summer 2024

- Burlap program – June 2024
- Tree diapers to be deployed to help with watering
- Mulching
- Reduced mowing around oak trees throughout summer



A dirt path winds through a dense forest. Sunlight filters through the trees, creating dappled light on the path. The trees are tall and thin, with lush green foliage. The path is made of dirt and small stones, leading into the distance.

MADISON PARKS



Existing City Parks

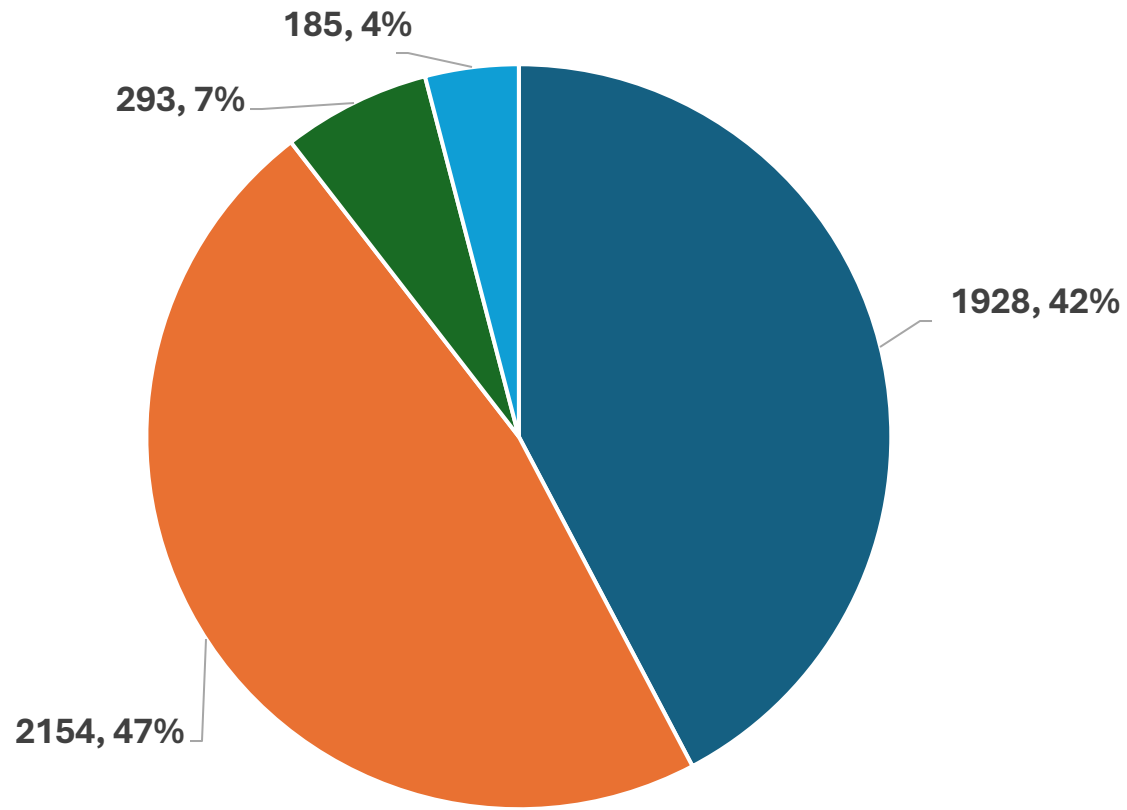
Parks and Open Space Plan
2025-2029 Update

City of Madison
Dane County, Wisconsin

- City of Madison
- Surrounding Municipality
- Park Type**
- Community Park
- Conservation Area
- Mini Park
- Neighborhood Park
- Open Space
- Other/Misc.
- Special Use Park
- Sports Complex
- Trafficway

Data Sources:
Dane County GIS (2023)
City of Madison GIS (2023)
Esri, NASA, NGA, USGS, FEMA

Types of Green Spaces in Parks



■ Active Recreation ■ Managed Natural Areas ■ Woodland ■ Other



Kettle Pond Conservation Park

Work Plan Highlights



Advance Sustainable and Resilient Land Management



Advance the Golf Program Transformation



Build Division-Wide Volunteer Management Program



Expand Efforts to Support Nature Everywhere



Sustainable and Resilient Land Management

Expand natural areas land management practices throughout the entire parks system

Maximize impact by building intra- and inter-agency collaboration

Convert to EV equipment





Advance Golf Program Transformation

72-hole operation to 63 holes in 2025

550 acres, year-round recreation

Function within ecosystem; The Glen had a 1700% increase in natural areas on the golf course with redevelopment.

Focus on incorporating natural areas and reducing long-term inputs



Build Division-Wide Volunteer Management Program

Increase volunteer hours, tracking, and recognition

Implement City-wide volunteer management software



Expand Support of Nature Everywhere Initiative

Lead the Connecting Children to Nature Initiative with Public Health

Partnership with Children and Nature Network and National League of Cities

International Nature Everywhere Conference in Madison (May 2024)

Key Collaborators: Public Health, Mayor's Office, Common Council, Monona Terrace, many community orgs



Charlie Romines – Streets Division Superintendent
Eric Knepp – Parks Division Superintendent
Ian Brown – City Forester
Sarah Lerner, PLA, LEED AP, ENV SP – Landscape Architect



**MADISON
PARKS**