

CERTIFIED SURVEY MAP

ALL OF LOTS 6, 7 AND 8, SILICON PRAIRIE BUSINESS PARK AS RECORDED IN VOLUME 58-015A OF PLATS, ON PAGES 77-79, AS DOCUMENT NUMBER 3664595, DANE COUNTY REGISTRY AND PART OF THE NW 1/4 OF THE NW 1/4 OF SECTION 28, ALL IN TOWNSHIP 7 NORTH, RANGE 8 EAST, CITY OF MADISON, DANE COUNTY, WISCONSIN.



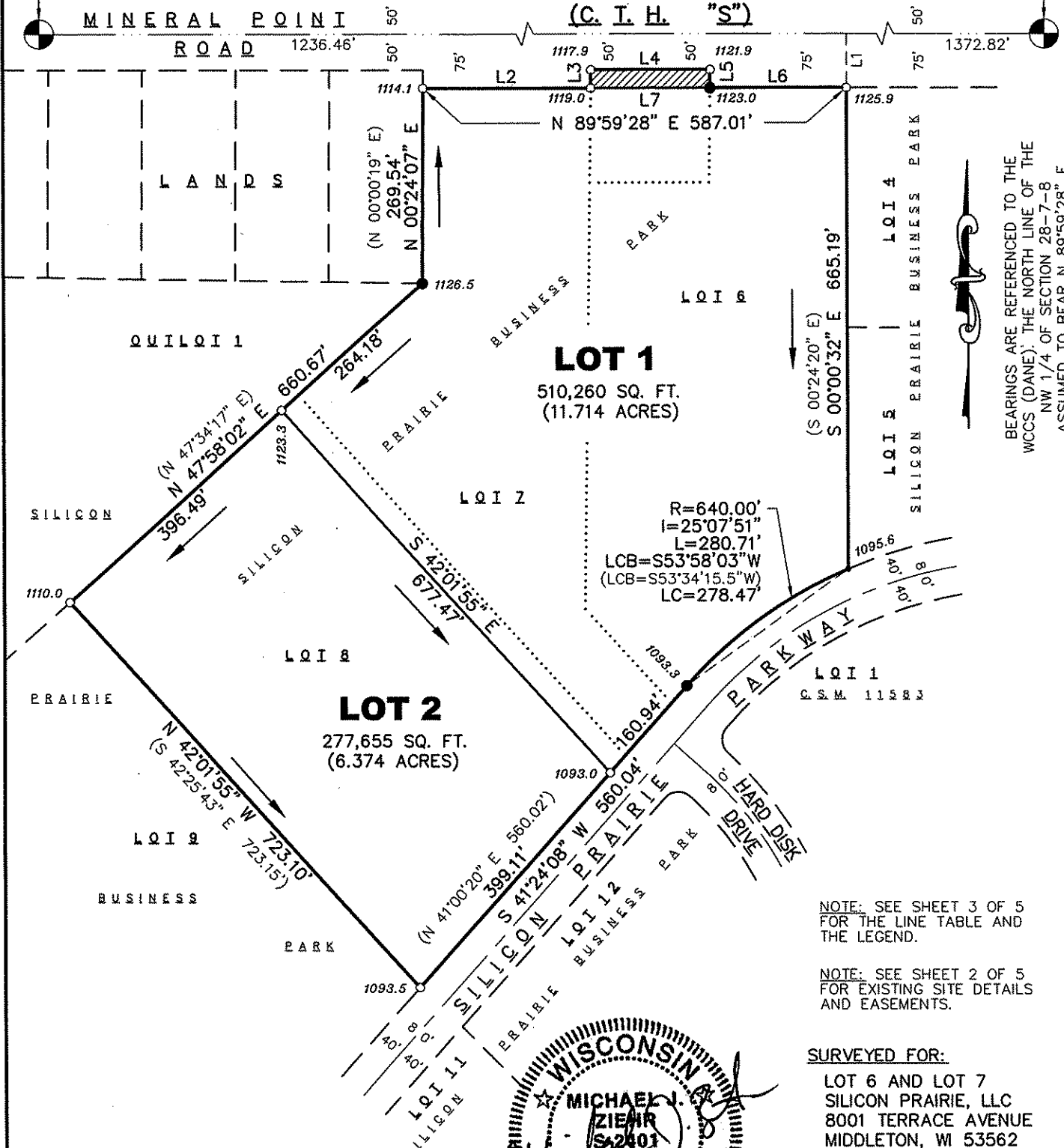
SCALE: ONE INCH = TWO HUNDRED FEET

TOTAL AREA = 787,915 SQ. FT.
(18.088 ACRES)

FOUND BROKEN ALUMINUM MONUMENT AT THE NORTH 1/4 CORNER OF SECTION 28, T7N, R8E, WCCS (DANE) MEASURED COORDS. ARE:
N: 477580.36
E: 776310.68

FOUND ALUMINUM MONUMENT AT THE NORTHWEST CORNER OF SECTION 28, T7N, R8E WCCS (DANE) COORDS. ARE:
N: 477579.95
E: 773701.40

MON. - MON. = N 89°59'28" E 2609.28'



BEARINGS ARE REFERENCED TO THE WCCS (DANE) THE NORTH LINE OF THE NW 1/4 OF SECTION 28-7-8 ASSUMED TO BEAR N 89°59'28" E.

NOTE: SEE SHEET 3 OF 5 FOR THE LINE TABLE AND THE LEGEND.

NOTE: SEE SHEET 2 OF 5 FOR EXISTING SITE DETAILS AND EASEMENTS.

SURVEYED FOR:
LOT 6 AND LOT 7
SILICON PRAIRIE, LLC
8001 TERRACE AVENUE
MIDDLETON, WI 53562

SURVEYED BY:
CALKINS ENGINEERING, LLC



MAP NO. _____