

Drawn By: BWS
 Checked By: NC
 Date: April 6, 2012
 Revised:
 Plot File: 16037-L
 Plot Title: 16037-L

Director: P:\Projects\Wisconsin\Draws\Fairhaven.dwg 12/16/11 1:02PM
 www.wattslandscape.com

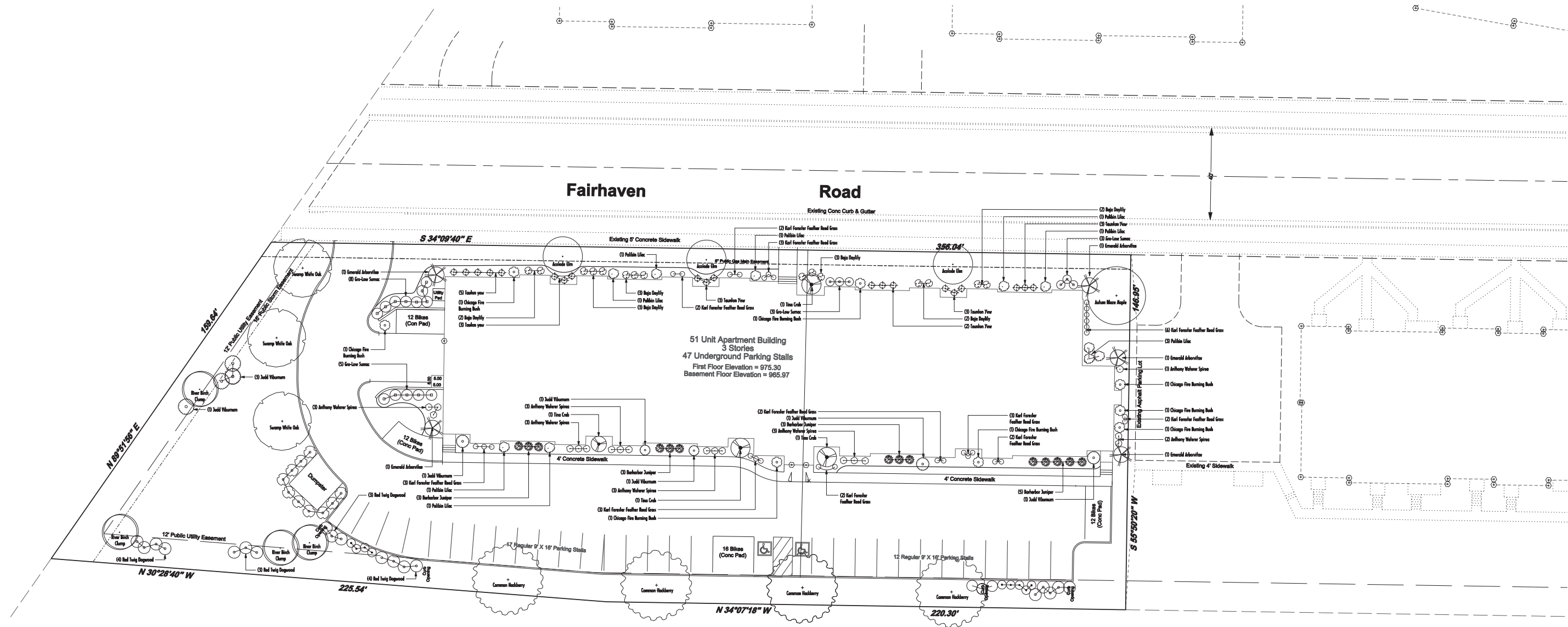
Watts Landscape Service
 350 Pioneer Avenue
 Verona, Wisconsin 53593
 Phone (608) 832-3535
 www.wattslandscape.com

For:
 Fairhaven Court LLC
 2820 Bryant Road
 Madison, Wisconsin 53713
 Contact: Kevin Kavanaugh

Landscape Plan
 Part of Lot 3, CSM No. 10769 and Lot 1, CSM No. 12126, lying in the SW 1/4 of the SW 1/4 of Section 12, T06N, R10E, City of Madison, Dane County, Wisconsin

Office Map Number
 16037-L

L1.0



Quantity	Common Name	Planting Size
3	Swamp White Oak	2" BB
3	Acolode Elm	1-3/4" BB
2	Autumn Blaze Maple	2" BB
4	Common Hackberry	2" BB
4	River Birch Clump	6" BB
4	Tina Crab	4" BB
15	Emerald Arborvitae	4" BB
5	Common Witch Hazel	#5 CONT
22	Red Twig Dogwood	#7 CONT
10	Judd Viburnum	#7 CONT
6	Chicago Fire Burning Bush	3" BB
11	Palibin Lilac	#5 CONT
18	Anthony Waterer Spirea	#2 CONT
19	Gro-Low Sumac	#2 CONT
23	Taunton Yew	15" BB
14	Bar Harbor Juniper	#2 CONT
19	Karl Forester Feather Reed Grass	#1 CONT
15	Baja Daylily	#1 CONT

City of Madison		
Landscape Requirements		
Number of Parking Stalls	175	
Number of Canopy Trees Required	76	
Number of Landscape Points Required		
Solution		
5	Canopy Trees (2" - 2-1/2") @ 35 points	
38	Canopy Trees or Small Ornamental Trees (1-1/2" - 2") @ 15 points	
	Deciduous Shrubs @ 2 points	
	Evergreen Shrubs @ 3 points	
	Evergreen Trees (3ht) @ 15 points	
	Decorative Wall @ 5 points (Per 10 lf)	
	Decorative Fence @ 5 points (Per 10 lf)	
	Decorative Earth Berm @ 5 points (Per 10 lf)	
	Average Height - 30" @ 5 points	
	Average Height - 15" @ 2 points	
Total Points		251

General Notes:

- Individual trees and shrub groupings found along the perimeter of the property as well as those found within lawn areas to receive wood mulch rings and wood mulch beds consisting of a mixture of recycled wood mulch, colored brown.
- "Vinyl Edging" to be Valley View Black Diamond Vinyl Edging or equivalent.
- Areas labeled "washed stone" to receive 1-1/2" washed stone spread to a 3" depth over fabric barrier.
- Seed shall consist of the following mixture:
 40% Palmer Ryegrass
 20% Baron Bluegrass
 20% Nassau Bluegrass
 20% Pennlawn Creeping Red Fescue
- Plant beds adjacent to the building(s) to be mulched with 1-1/2" diameter washed stone mulch spread to a 3" depth over fabric barrier