

Time: 5/9/2018 11:19:44 AM

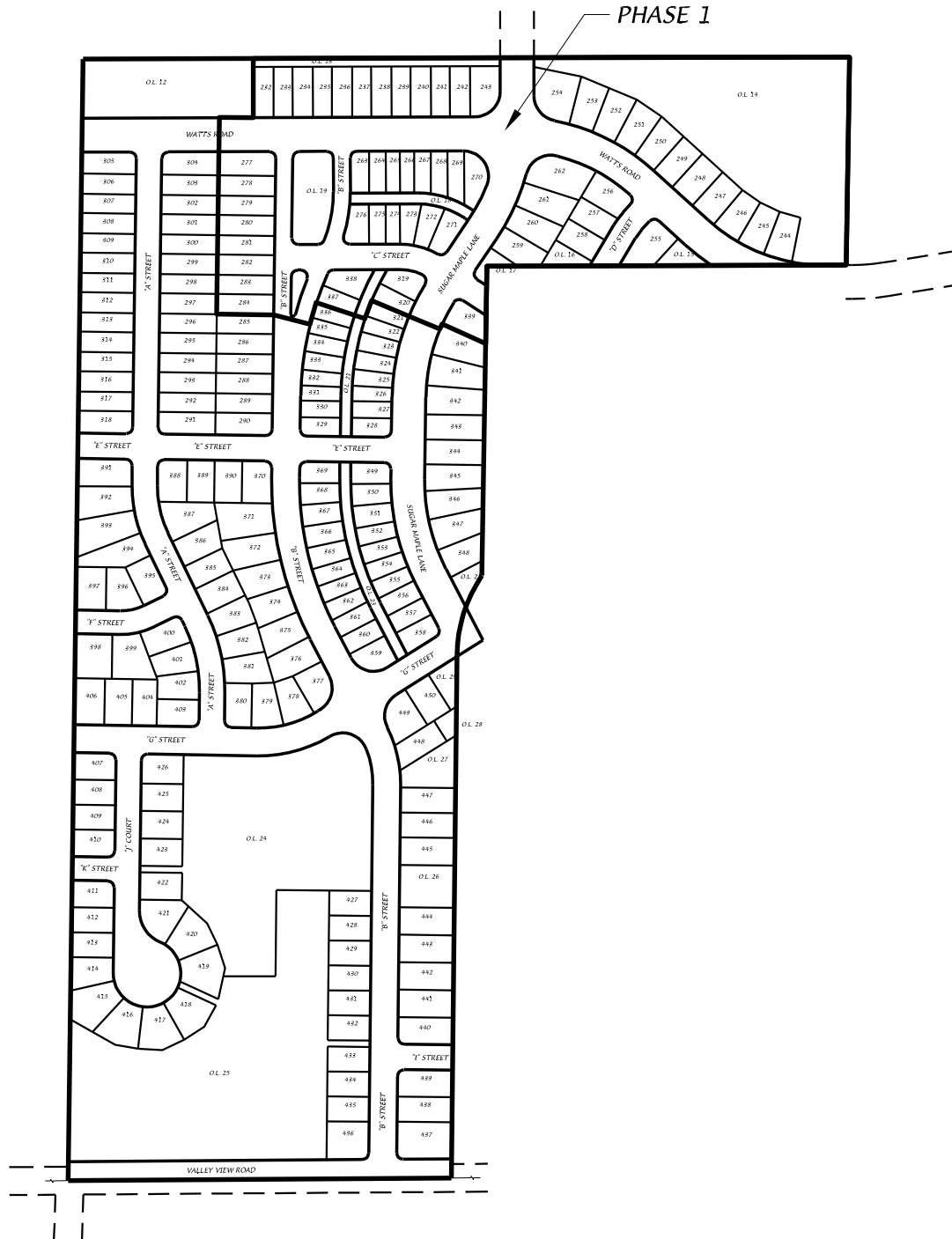
Session: C:\GTViewer_Sessions\Deming & Fourier SW.gts

City of Madison, WI - GIS/Mapping data

Printed By: entnt


Disclaimer: The City makes no representation about the accuracy of these records and shall not be liable for any damages

Birchwood Point South - Phase Map



D'ONOFRIO KOTTKE AND ASSOCIATES, INC.
 7530 Westward Way, Madison, WI 53717
 Phone: 608.833.7530 • Fax: 608.833.1089
YOUR NATURAL RESOURCE FOR LAND DEVELOPMENT



0 400

 Scale 1" = 400'

DATE: 03-23-18

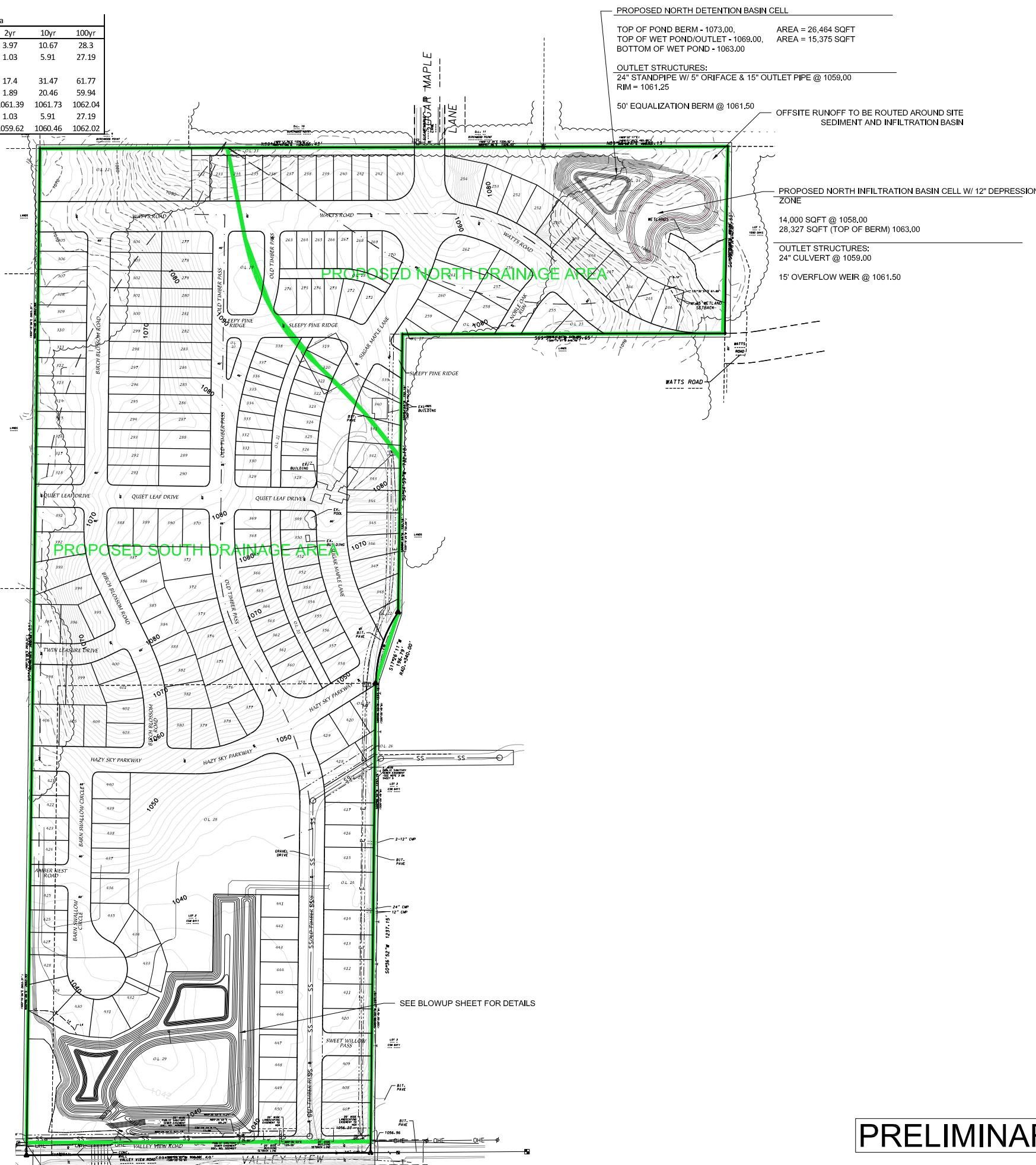
REV.:

F.N.: 17-07-116

DRAWN BY: JMS

U:/USER/1707116/DRAWINGS/Phase Map.DWG

North Drainage Area				
	1yr	2yr	10yr	100yr
Existing North	2.54	3.97	10.67	28.3
Proposed Routed North	0.74	1.03	5.91	27.19
Proposed North w/o Basin	13.72	17.4	31.47	61.77
Routed Through North Det Basin	0.86	1.89	20.46	59.94
North Det Basin Elev	1061.01	1061.39	1061.73	1062.04
Routed Through Infiltration Basin	0.74	1.03	5.91	27.19
North Infiltration Basin Elev	1059.53	1059.62	1060.46	1062.02



SOUTH DRAINAGE BASIN

EXISTING SOUTH DRAINAGE BASIN INFORMATION

EXISTING SOUTH DRAINAGE AREA = 50.5 AC.
 PROPOSED TOTAL WEIGHTED CN = 68

52.9 AC - TYPE B UNDEVELOPED SOILS = CN 68

PROPOSED TC = 51.7 MIN

PROPOSED SOUTH DRAINAGE BASIN INFORMATION

PROPOSED SOUTH DRAINAGE AREA = 50.5 AC.

PROPOSED TOTAL WEIGHTED CN = 82

16.3 AC - 55% IMP LOTS = CN 83

12.0 AC - 60% IMP LOTS = CN 86

6.8 AC - 75% IMP ALLEY LOTS = CN 89

2.0 AC - WET AREA OF BASIN = CN 98

13.4 AC - OL/UNDEV AREA (ASSUME 10% IMP) = CN 71

PROPOSED TC = 21.0 MIN

NORTH DRAINAGE BASIN

EXISTING NORTH DRAINAGE BASIN INFORMATION

EXISTING SOUTH DRAINAGE AREA = 15.2 AC.

PROPOSED TOTAL WEIGHTED CN = 68

15.2 AC - TYPE B UNDEVELOPED SOILS = CN 68

PROPOSED TC = 49.2 MIN

PROPOSED NORTH DRAINAGE BASIN INFORMATION

PROPOSED SOUTH DRAINAGE AREA = 15.2 AC.

PROPOSED TOTAL WEIGHTED CN = 83

4.3 AC - 55% IMP LOTS = CN 83

3.8 AC - 60% IMP LOTS = CN 86

3.4 AC - 75% IMP ALLEY LOTS = CN 89

0.5 AC - WET AREA OF BASIN = CN 98

3.2 AC - OL/UNDEV AREA (ASSUME 10% IMP) = CN 71

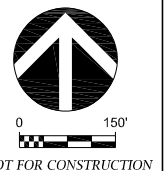
PROPOSED TC = 25.6 MIN

PRELIMINARY - FOR REVIEW ONLY

D'ONOFRIO KOTTKE AND ASSOCIATES, INC.
 7530 Westward Way, Madison, WI 53717
 Phone: 608.833.7530 • Fax: 608.833.1089
 YOUR NATURAL RESOURCE FOR LAND DEVELOPMENT

PROPOSED STORMWATER DRAINAGE PLAN
BIRCHWOOD SOUTH

CITY OF MADISON, WISCONSIN



DATE: 11-03-17
 REVISED:

DRAWN BY: GVP
 FN: 17-04-110
 Sheet Number:
 1 OF 2