



***Parks for All, Forever***





*Get to know*  
**MADISON  
PARKS**

**280+ UNIQUE PARKS**  
WITH NEARLY **6,000 ACRES**  
**OF PARKLAND**

Investing in our parks directly contributes to a vibrant local economy. They increase property values, attract businesses and tourists, create jobs, and — most importantly — connect people across the community.

**EACH YEAR OUR PARKS HOST  
6 MILLION VISITS  
AND MORE THAN  
75 FREE PROGRAMS  
AND EVENTS**

**95% OF RESIDENTS  
LIVE WITHIN A  
10-MINUTE WALK  
OF A PARK<sup>1</sup>**

<sup>1</sup> Sourced: National Recreation and Park Association (NRPA), Trust for Public Land, U.S. Census Bureau, ESRI



As Madison Parks' non-profit partner, the Madison Parks Foundation works to conserve, promote, and enhance our parks.

With 95¢ of every dollar raised going directly back into our world-class parks, your contributions are shaping the future of our community spaces.

2024 marked 130 years of Madison's dedication to preserving public spaces. Our parks have evolved over the years to meet the community's changing needs, and today they are more vibrant and engaging than ever!



# Our work

By connecting private support to public initiatives, our work helps fund and sustain park expansion, amenities and improvements, and free to low-cost programming.

These amenities and programs bring people from across the state to enjoy our parks and open spaces through concerts and performing arts series, movie nights, adaptive exercise and skill learning opportunities, and so much more.



Madison  
is home to  
**5 of the 15**  
accessible  
playgrounds  
in the state!



Beach access mats provide a firmer surface for those who need it to cross the sand, such as people who use wheelchairs or other mobility aids.

## Improving accessibility

through features such as beach mats, fishing piers, and cognitive and mobility-friendly playgrounds.



### EXPERIENCE our impact:

- **Frautschi Family Accessible Playground** at Warner Park
- **Jenni & Kyle Foundation Accessible Playground** at Brittingham Park
- **Jeff Erlanger Accessible Playground and Sprayground** at Rennebohm Park

*See more projects!*







K.N.O.W. PROGRAM FISHING



## Free and low-cost programming

such as:

- ☀ **Learning Series** free and low-cost equipment, and introduction to new skills and hobbies within our parks.
- ☀ **K.N.O.W. (Kids Need Opportunities at Warner) program** provides positive and engaging programming for youth in our area.
- ☀ **Live at the Glen Series** a free-to-attend community-building music and performing arts events.
- ☀ **Access to swimming programs and scholarships** at Goodman Community Pool.
- ☀ **And more!**

**Park enhancements** through financing and facilitating citizen-led improvements, including the **Saris Foundation Bike Park, Futsal courts**, the renovation of **The Glen Golf Park**, and **custom tributes and memorials** throughout the park grounds and dog parks.

Thanks to your support, our work can be enjoyed in parks and open spaces across the community. **However, we need your ongoing support to continue our mission and sustain our vision for the future.**

# Parks for All

Making our parks “accessible” means addressing physical, cognitive, and socioeconomic obstacles that keep people from reaching and enjoying our parks.

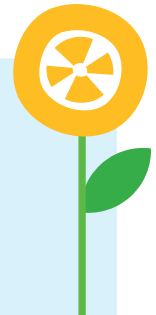
Those obstacles will continue to change and grow long into the future, so our ability to fund solutions must be flexible. The specific initiatives will change, but our focus will always be the same: parks should be for all people, forever.



John Olin, the founding father of our park system, started his own Trust that continues to contribute to our park system today, more than 100 years later. With this in mind, the Madison Parks Foundation is embarking on a **Parks For All Trust Campaign** to raise funds to support our parks in perpetuity. We are, in essence, looking at our past to create the future of our parks.

The primary purpose of this Trust will be to generate more use of our parks by supporting programming, capital projects, and the development of other enhancements to our parks that drive inclusivity and access, unfunded by tax dollars.

We consider this Trust the modern-day version of the 100-year-old Olin Trust, with one important difference: **whether you donate \$1 or \$1 million dollars, you can leave a legacy of supporting our parks forever.**



# \$10 MILLION

## PARKS FOR ALL TRUST

The interest earned from this trust could help fund current projects, future needs, or contribute to larger capital campaigns to make the biggest impact in our community.

The featured examples are just a few of the projects and programs our parks offer that are not funded by taxpayer dollars, and with your help, we can do so much more.

A POSSIBLE  
**\$500,000 (5%)**  
IN INTEREST EACH YEAR



### LEARNING SERIES EVENTS

Help us introduce more people to new skills and hobbies with free and low-cost equipment rentals, and educational events.



### GOODMAN POOL ACCESS

MPF sponsors family and youth passes for community members who may not otherwise be able to afford it.



### LIVE AT THE GLEN MUSIC SERIES

Free-to-attend concerts provide access to local live music in a historic outdoor setting.



### BEACH MATS

Accessing the beach with mobility devices (wheelchairs, crutches, canes, etc.) is a challenge. Beach mats offer rigid, and non-slip access to our beaches.



Planning for the future of our parks through a Trust is an idea inspired by the vision that our state was founded upon: FORWARD.

**Your gift can help bring this vision to life.**

