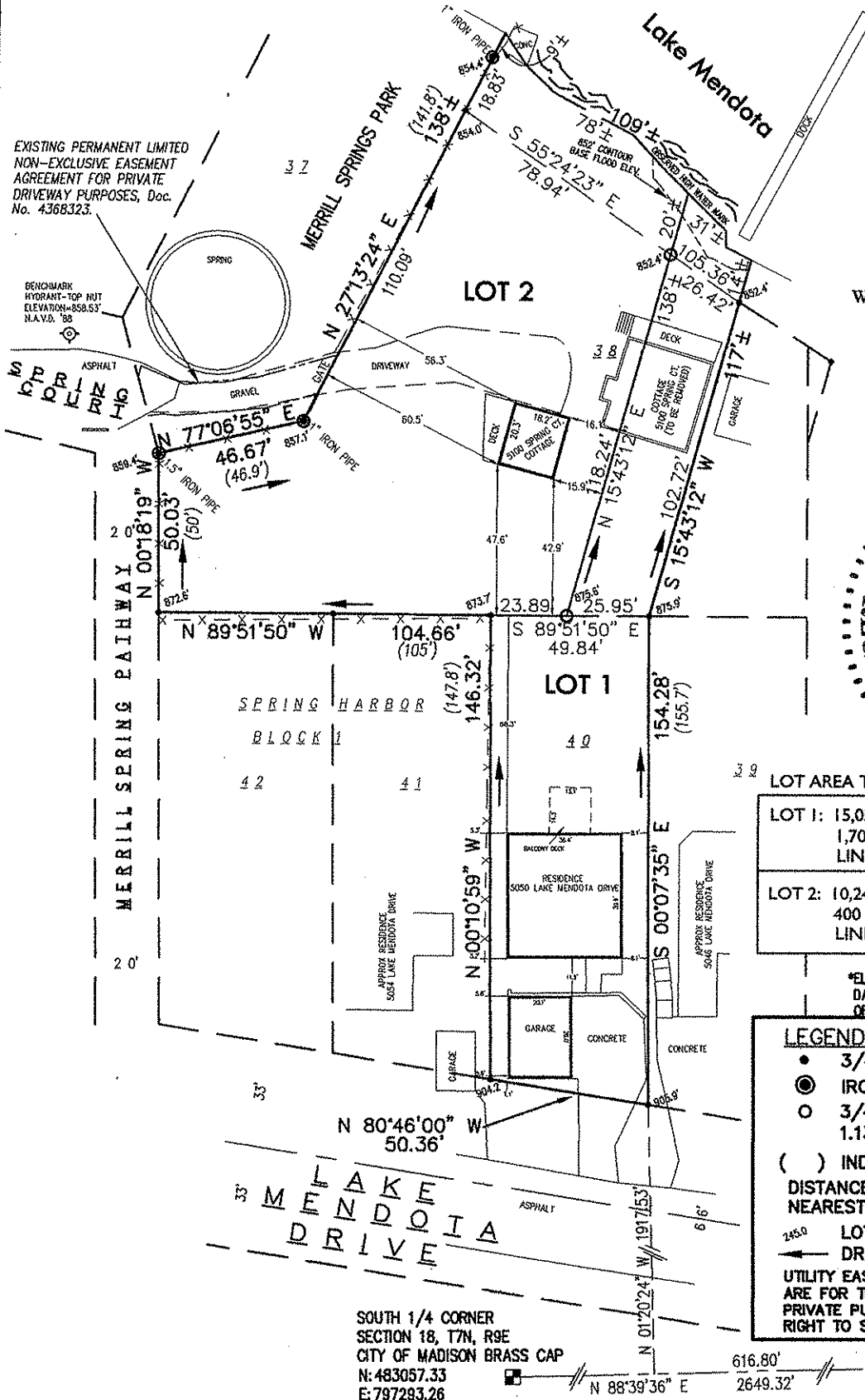
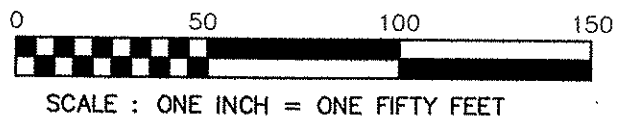


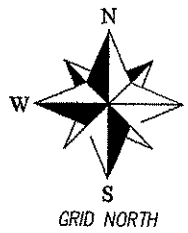
CERTIFIED SURVEY MAP

LOT 40 AND PART OF LOT 38, BLOCK ONE, SPRING HARBOR SUBDIVISION,
RECORDED IN Vol. 4, Pg. 51-51A, Doc. No. 306247, IN THE FRACTIONAL SE 1/4 OF
SECTION 18, T7N, R9E, CITY OF MADISON, DANE COUNTY, WISCONSIN

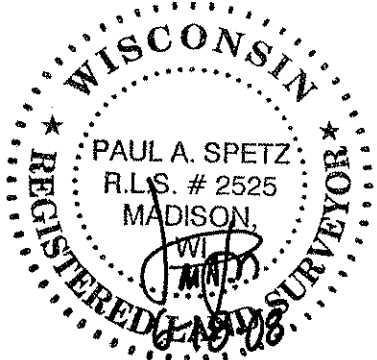


EXISTING PERMANENT LIMITED
NON-EXCLUSIVE EASEMENT
AGREEMENT FOR PRIVATE
DRIVEWAY PURPOSES, Doc.
No. 4368323.

BENCHMARK
HYDRANT-TOP PUT
ELEVATION=850.53'
N.A.V.D. '88



BEARINGS ARE REFERENCED TO THE
DANE COUNTY COORDINATE SYSTEM
SOUTH LINE OF THE SE 1/4 OF SECTION
18, T7N, R9E, BEARS N 88°39'36" E



LOT AREA TABLE

LOT 1: 15,053 S.F. TO MEANDER LINE 1,700 S.F. ± BETWEEN MEANDER LINE AND O.H.W.M.
LOT 2: 10,242 S.F. TO MEANDER LINE 400 S.F. ± BETWEEN MEANDER LINE AND O.H.W.M.

*ELEVATIONS ARE BASED ON NAVD 88
DATUM, AS VERIFIED FROM CITY
OF MADISON PLSS CORNERS.

- LEGEND**
- 3/4" SOLID IRON ROD FOUND
 - ⊙ IRON PIPE FOUND
 - 3/4"x18" SOLID IRON ROD SET
1.13 Lbs./LINEAL FOOT.
 - () INDICATES RECORDED AS
DISTANCES ARE MEASURED TO THE
NEAREST HUNDREDTH OF A FOOT.
 - ▲ LOT CORNER ELEVATION
 - DRAINAGE ARROWS (SEE Pg. 2)
- UTILITY EASEMENTS AS HEREIN SET FORTH
ARE FOR THE USE OF PUBLIC BODIES AND
PRIVATE PUBLIC UTILITIES HAVING THE
RIGHT TO SERVE THE AREA.

SOUTH 1/4 CORNER
SECTION 18, T7N, R9E
CITY OF MADISON BRASS CAP
N: 483057.33
E: 797293.26

SOUTHEAST 1/4 CORNER
SECTION 18, T7N, R9E
CITY OF MADISON BRASS CAP
N: 483119.29
E: 799041.56

MAP NO. _____

DANE COUNTY COORDINATE SYSTEM
MEASURED COORDINATES

SURVEYED BY: _____