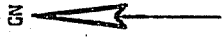


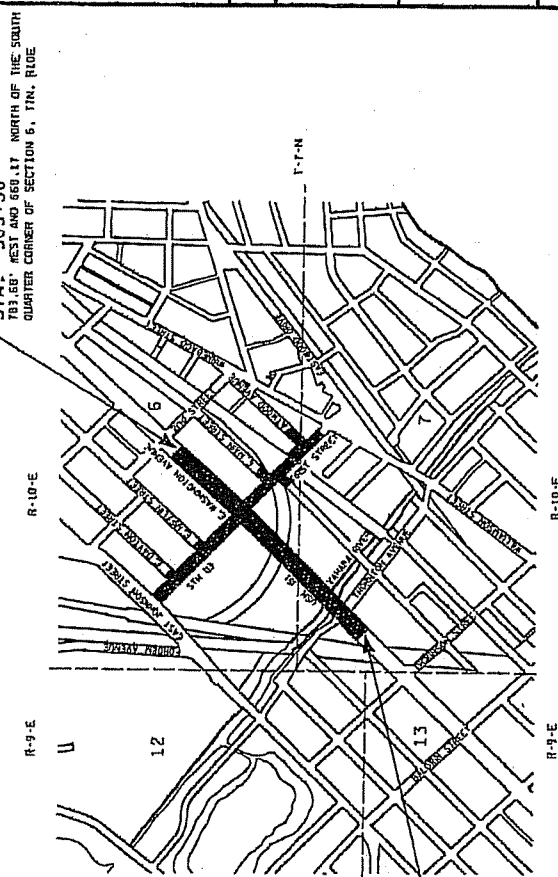
PRINTED IN U.S.A. - MERCHANTABILITY



CONVENTIONAL SIGNS AND ABBREVIATIONS

STATE LINE	FOUNDATION OR RUIN	ENCROACHING SIGN	COMPENSABLE	NON-COMPENSABLE
COUNTY LINE	BUILDING	POWER POLE	TELEPHONE POLE	
RANGE LINES	CEMETERY	NO ACCESS (BY ACQUISITION)	NO ACCESS (BY STATUTORY AUTHORITY)	NO ACCESS (BY PREVIOUS PROJECT)
SECTION LINE	R/W MONUMENT	NO ACCESS (BY ACQUISITION)	NO ACCESS (BY STATUTORY AUTHORITY)	NO ACCESS (BY PREVIOUS PROJECT)
QUARTER LINE	NON-MONUMENTED	NO ACCESS (BY ACQUISITION)	NO ACCESS (BY STATUTORY AUTHORITY)	NO ACCESS (BY PREVIOUS PROJECT)
SIXTEENTH LINE	R/W POINT	NO ACCESS (BY ACQUISITION)	NO ACCESS (BY STATUTORY AUTHORITY)	NO ACCESS (BY PREVIOUS PROJECT)
NEW REFERENCE LINE	IRON PIN	NO ACCESS (BY ACQUISITION)	NO ACCESS (BY STATUTORY AUTHORITY)	NO ACCESS (BY PREVIOUS PROJECT)
EXISTING R/W LINE	VALVE	NO ACCESS (BY ACQUISITION)	NO ACCESS (BY STATUTORY AUTHORITY)	NO ACCESS (BY PREVIOUS PROJECT)
PROPERTY LINE	WINDMILL	NO ACCESS (BY ACQUISITION)	NO ACCESS (BY STATUTORY AUTHORITY)	NO ACCESS (BY PREVIOUS PROJECT)
CORPORATE LIMITS	SILO, MANHOLE, VENT, SEPTIC VENT, WELL, ETC.	NO ACCESS (BY ACQUISITION)	NO ACCESS (BY STATUTORY AUTHORITY)	NO ACCESS (BY PREVIOUS PROJECT)
LOT, TR. AND OTHER	GAS PUMPS	NO ACCESS (BY ACQUISITION)	NO ACCESS (BY STATUTORY AUTHORITY)	NO ACCESS (BY PREVIOUS PROJECT)
UNDERGROUND FACILITY (GAS, TELEPHONE, ELECTRIC, ETC.)	BUSHES	NO ACCESS (BY ACQUISITION)	NO ACCESS (BY STATUTORY AUTHORITY)	NO ACCESS (BY PREVIOUS PROJECT)
FENCE	TREES (DECIDUOUS)	NO ACCESS (BY ACQUISITION)	NO ACCESS (BY STATUTORY AUTHORITY)	NO ACCESS (BY PREVIOUS PROJECT)
INTEREST	WOODS	NO ACCESS (BY ACQUISITION)	NO ACCESS (BY STATUTORY AUTHORITY)	NO ACCESS (BY PREVIOUS PROJECT)
HIGHWAY	ENCROACHING SIGN	NO ACCESS (BY ACQUISITION)	NO ACCESS (BY STATUTORY AUTHORITY)	NO ACCESS (BY PREVIOUS PROJECT)
EASEMENT		NO ACCESS (BY ACQUISITION)	NO ACCESS (BY STATUTORY AUTHORITY)	NO ACCESS (BY PREVIOUS PROJECT)
BEAM GUARD		NO ACCESS (BY ACQUISITION)	NO ACCESS (BY STATUTORY AUTHORITY)	NO ACCESS (BY PREVIOUS PROJECT)
TRANSMISSION		NO ACCESS (BY ACQUISITION)	NO ACCESS (BY STATUTORY AUTHORITY)	NO ACCESS (BY PREVIOUS PROJECT)
STRUCTURE AND LINE		NO ACCESS (BY ACQUISITION)	NO ACCESS (BY STATUTORY AUTHORITY)	NO ACCESS (BY PREVIOUS PROJECT)
PEDESTAL		NO ACCESS (BY ACQUISITION)	NO ACCESS (BY STATUTORY AUTHORITY)	NO ACCESS (BY PREVIOUS PROJECT)
PERMANENT LIMITED EASEMENT		NO ACCESS (BY ACQUISITION)	NO ACCESS (BY STATUTORY AUTHORITY)	NO ACCESS (BY PREVIOUS PROJECT)
BARN		NO ACCESS (BY ACQUISITION)	NO ACCESS (BY STATUTORY AUTHORITY)	NO ACCESS (BY PREVIOUS PROJECT)
BUILDING		NO ACCESS (BY ACQUISITION)	NO ACCESS (BY STATUTORY AUTHORITY)	NO ACCESS (BY PREVIOUS PROJECT)
CERTIFIED SURVEY MAP		NO ACCESS (BY ACQUISITION)	NO ACCESS (BY STATUTORY AUTHORITY)	NO ACCESS (BY PREVIOUS PROJECT)
DOCUMENT		NO ACCESS (BY ACQUISITION)	NO ACCESS (BY STATUTORY AUTHORITY)	NO ACCESS (BY PREVIOUS PROJECT)
GARAGE		NO ACCESS (BY ACQUISITION)	NO ACCESS (BY STATUTORY AUTHORITY)	NO ACCESS (BY PREVIOUS PROJECT)
HOUSE		NO ACCESS (BY ACQUISITION)	NO ACCESS (BY STATUTORY AUTHORITY)	NO ACCESS (BY PREVIOUS PROJECT)
K/V		NO ACCESS (BY ACQUISITION)	NO ACCESS (BY STATUTORY AUTHORITY)	NO ACCESS (BY PREVIOUS PROJECT)
NO.		NO ACCESS (BY ACQUISITION)	NO ACCESS (BY STATUTORY AUTHORITY)	NO ACCESS (BY PREVIOUS PROJECT)
PG.		NO ACCESS (BY ACQUISITION)	NO ACCESS (BY STATUTORY AUTHORITY)	NO ACCESS (BY PREVIOUS PROJECT)
P.O.B.		NO ACCESS (BY ACQUISITION)	NO ACCESS (BY STATUTORY AUTHORITY)	NO ACCESS (BY PREVIOUS PROJECT)
P.L.		NO ACCESS (BY ACQUISITION)	NO ACCESS (BY STATUTORY AUTHORITY)	NO ACCESS (BY PREVIOUS PROJECT)
S		NO ACCESS (BY ACQUISITION)	NO ACCESS (BY STATUTORY AUTHORITY)	NO ACCESS (BY PREVIOUS PROJECT)
STA.		NO ACCESS (BY ACQUISITION)	NO ACCESS (BY STATUTORY AUTHORITY)	NO ACCESS (BY PREVIOUS PROJECT)
TAN.		NO ACCESS (BY ACQUISITION)	NO ACCESS (BY STATUTORY AUTHORITY)	NO ACCESS (BY PREVIOUS PROJECT)
TYP.		NO ACCESS (BY ACQUISITION)	NO ACCESS (BY STATUTORY AUTHORITY)	NO ACCESS (BY PREVIOUS PROJECT)
VOL.		NO ACCESS (BY ACQUISITION)	NO ACCESS (BY STATUTORY AUTHORITY)	NO ACCESS (BY PREVIOUS PROJECT)
TEMPORARY INTEREST		NO ACCESS (BY ACQUISITION)	NO ACCESS (BY STATUTORY AUTHORITY)	NO ACCESS (BY PREVIOUS PROJECT)
HIGHWAY EASEMENT		NO ACCESS (BY ACQUISITION)	NO ACCESS (BY STATUTORY AUTHORITY)	NO ACCESS (BY PREVIOUS PROJECT)

END RELOCATION ORDER
 STA. 303+30
 781.66' WEST AND 560.17' NORTH OF THE SOUTH QUARTER CORNER OF SECTION 6, T1N, R10E



BEGIN RELOCATION ORDER
 STA. 285+20
 263.64' EAST AND 640.59' SOUTH OF THE SOUTHWEST CORNER OF SECTION 6, T1N, R10E

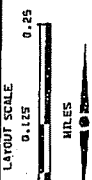
NOTES
 DIMENSURING FOR THE NEW R/W IS MEASURED ALONG AND PERPENDICULAR TO THE NEW REFERENCE LINES.
 EXISTING HIGHWAY RIGHT OF WAY SHOWN HEREON IS BASED ON THE FOLLOWING POINTS OF REFERENCE AS SPECIFIED ON EACH PLAT DETAIL SHEET; SEE EACH DETAIL SHEET.
 COORDINATES AND BEARINGS ON THIS PLAT ARE OBTAINED TO THE WISCONSIN COUNTY COORDINATE SYSTEM - DANE COUNTY, HAD 83 UTM ADJUSTMENT. THE COORDINATES SHOWN ARE GRID COORDINATES AND ARE TO BE USED AS GRID OR GROUND VALUES ON THIS PLAT.
 RIGHT OF WAY MONUMENTS ARE 7" REBAR WITH CAPS AND ARE PLACED PRIOR TO OR AT THE TIME OF LAND TITLE TRANSFER.
 RIGHT OF WAY BOUNDARIES ARE DEFINED WITH CORNERS OF THE PERIMETER OF THE HIGHWAY LANDS REFERENCED TO THE U.S. PUBLIC LAND SURVEY OR OTHER SURVEYS OF PUBLIC RECORDS.

REVISION DATE: SEPT. 8, 2009
 WORK 3, 2005 (K)

PLAT OF RIGHT OF WAY REQUIRED FOR
EAST WASHINGTON AVENUE - CITY OF MADISON
 (WASHINGTON AVE. - SECOND ST.)
 PLAT DATE: 03 JUN 2005

HIGHWAY: USH 151
 COUNTY: DANE
 PLAT RATE: \$3.00 PER SHEET

TOTAL NET LENGTH OF CENTERLINE: 0.243 MI.
 R/W PROJECT NUMBER: 5992-05-59
 CONSTRUCTION PROJECT NUMBER: 5992-05-61



STATE OF WISCONSIN
 DEPARTMENT OF TRANSPORTATION
 APPROVED:

DATE: _____ EXECUTIVE SECRETARY
 RELOCATION ORDER APPROVED BY THE BOARD OF PUBLIC WORKS
 DATE: _____ EXECUTIVE SECRETARY



APPROVED FOR
 CITY OF MADISON

RELOCATION ORDER APPROVED BY THE
 COMMON COUNCIL

DATE: _____ CITY CLERK

RELOCATION ORDER APPROVED BY THE
 PLAN COMMISSION

DATE: _____ EXECUTIVE SECRETARY

RELOCATION ORDER APPROVED BY THE
 BOARD OF PUBLIC WORKS

DATE: _____ EXECUTIVE SECRETARY

RELOCATION ORDER APPROVED BY THE
 BOARD OF PUBLIC WORKS

DATE: _____ EXECUTIVE SECRETARY

ORIGINAL PLAT MANAGED BY K.A.K. - DISTRICT 1 - DESIGN
 LAYOUT SCALE: 0.125, 0.25
 MILES

SHEET NUMBER: 4.1
 TOTAL SHEETS: 8

PLAT OF RIGHT OF WAY REQUIRED FOR
EAST WASHINGTON AVENUE - CITY OF MADISON
 (WASHINGTON AVE. - SECOND ST.)
 PLAT DATE: 03 JUN 2005

HIGHWAY: USH 151
 COUNTY: DANE
 PLAT RATE: \$3.00 PER SHEET

TOTAL NET LENGTH OF CENTERLINE: 0.243 MI.
 R/W PROJECT NUMBER: 5992-05-59
 CONSTRUCTION PROJECT NUMBER: 5992-05-61

SCHEDULE OF LANDS & INTERESTS REQUIRED

AREAS SHOWN IN THE TOTAL ACRES COLUMN MAY BE APPROXIMATE AND ARE DERIVED FROM TAX ROLLS OR OTHER AVAILABLE SOURCES AND MAY NOT INCLUDE LANDS OF THE OWNER WHICH ARE NOT CONTIGUOUS TO THE AREA TO BE ACQUIRED.

PARCEL NUMBER	SHEET NUMBER	OWNER(S)	INTEREST REQUIRED	TOTAL S.F.	R/W S.F. REQUIRED	TOTAL S.F. FROM	IL S.F.	HE S.F.	PLS S.F.
1	4.04	CHANDLER PROPERTIES, LLC	FEE, TI	12,108	38	12,170	655	---	---
2	4.04	ALBIN H. & BEVERLY J. WALLER TRUST	FEE	9,657	9,657	0	---	---	---
3	4.04	YAHARA SQUARE ASSOCIATES	FEE, TI	95,420	10	95,418	1,056	---	---
4	4.04	1451 EAST WASHINGTON, LLC	FEE, TI	20,992	165	20,827	1,743	---	---
5	4.04	WARDWELL REAL ESTATE, LLC	FEE, TI	14,816	2,301	12,535	401	---	---
6	4.04 & 4.05	CITY OF MADISON	FEE	INDETERMINATE	1,134	INDETERMINATE	---	---	---
7	4.04 & 4.05	WARLING LUMBER COMPANY	FEE, TI	166,176	89	165,087	945	---	---
8	4.05	AUTOMOTIVE REPAIR & ASSOCIATES, INC.	TI	22,010	---	22,040	927	---	---
9	4.05 & 4.07	UNION PACIFIC RAILROAD CO.	HE, TI	INDETERMINATE	---	INDETERMINATE	4,982	1,558	---
10									
11	4.05, 4.06 & 4.08	TWENTIETH CENTURY MARKETS, INC.	PLE, TI	113,170	---	143,170	7,355	---	5,895
12	4.06	FORE COAL & OIL CO.	PLE, TI	15,693	---	15,693	2,929	---	5,950
13	4.06 & 4.07	CITY OF MADISON	FEE	10,509	3,975	6,614	---	---	---
14	4.06 & 4.08	KOUA & DYN W. YANG	FEE, TI	9,250	1,305	6,945	649	---	---
15									
16	4.06	JOHN J. & KATHERINE A. MALTENBERG	FEE, TI	6,600	201	6,399	279	---	---
17	4.06	APEK PROPERTIES, INC.	FEE, TI	6,600	112	6,488	288	---	---
18	4.06	TIMOTHY BEAKLAND WARREN	FEE, TI	6,600	28	6,572	160	---	---
19	4.07	CITY OF MADISON	FEE	4,920	302	4,618	---	---	---
20	4.08	MADISON METROPOLITAN SEWERAGE DISTRICT	FEE, TI	43,030	192	42,838	536	---	---
21									
22	4.04	AMERICAN TRANSMISSION COMPANY	RELEASE OF RIGHTS						
23	4.04 & 4.07	AT&T TELECOM	RELEASE OF RIGHTS						
24	4.04, 4.05	MADISON GAS & ELECTRIC COMPANY	RELEASE OF RIGHTS						
25	4.04	CITY OF MADISON SANITARY SEWER	RELEASE OF RIGHTS						
26	4.04	CITY OF MADISON WATER UTILITY	RELEASE OF RIGHTS						
27	4.05, 4.07	SPRINT	RELEASE OF RIGHTS						
28	4.05, 4.07	WILTEL COMMUNICATIONS	RELEASE OF RIGHTS						
29	4.05, 4.07	UNION PACIFIC RAILROAD CO.	RELEASE OF RIGHTS						
30	4.05, 4.06	CITY OF MADISON TRAFFIC ENGINEERING	RELEASE OF RIGHTS						
31	4.04, 4.05, 4.07	CITY OF MADISON STORM SEWER	RELEASE OF RIGHTS						
32	4.04, 4.05	SBC COMMUNICATIONS	RELEASE OF RIGHTS						
33	4.06	MADISON METROPOLITAN SEWERAGE DISTRICT	RELEASE OF RIGHTS						

REVISION DATE: SEPT. 8, 2001
MARCH 3, 2005

DATE: SEPTEMBER 8, 2004

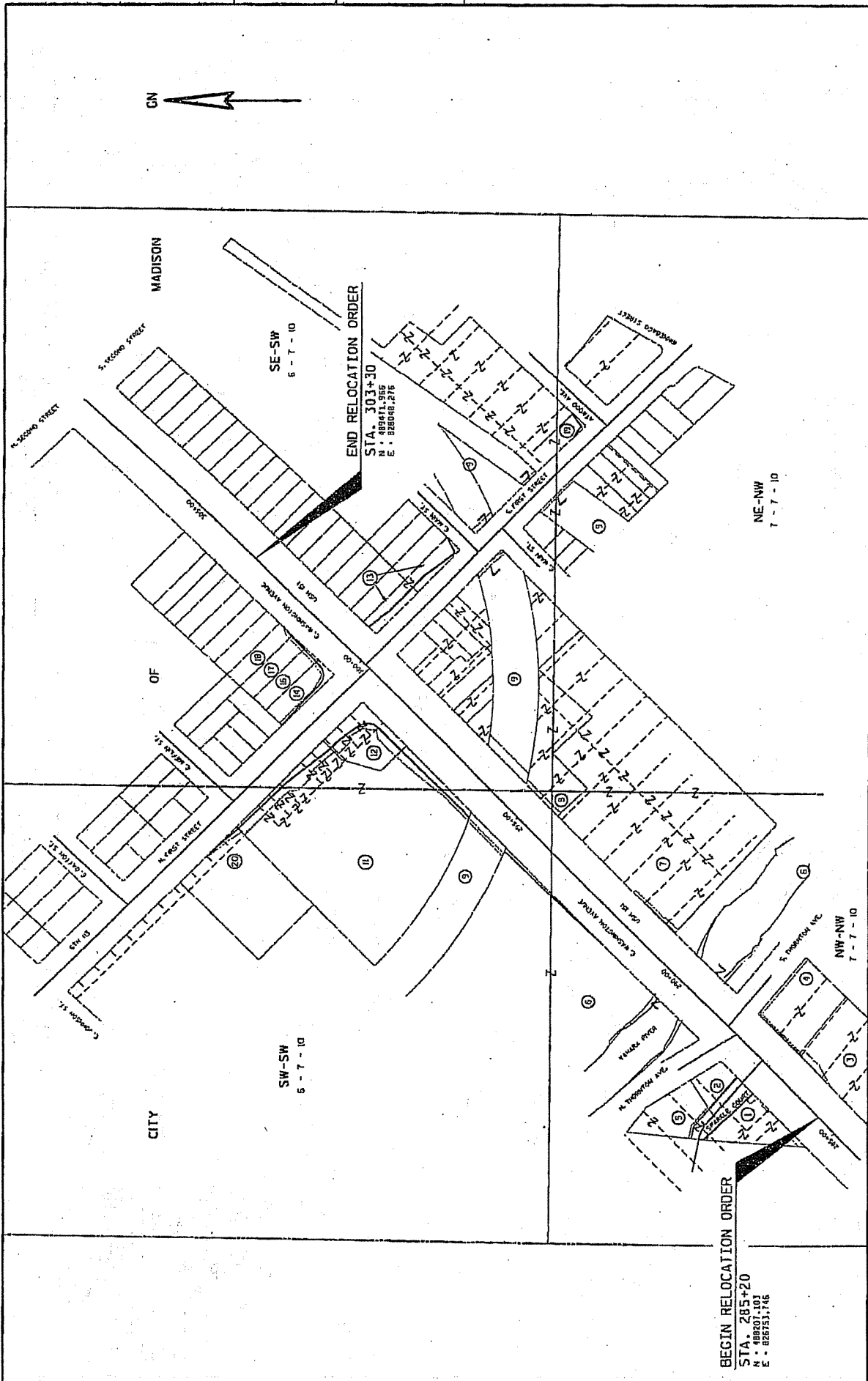
SCALE: FEET
0 100 200

HWY: USH 151
COUNTY: DANE

STATE R/W PROJECT NUMBER 5992-05-59
CONSTRUCTION PROJECT NUMBER 5992-05-61

PLAT SHEET NO: 4.D2
PS&E SHEET
E

FILE NAME: G:\NWD\N10333\AUG35\9-02-051
PLOT DATE: 03-MAR-2005
PLOT BY: N. Engineering
PLOT NOISE:
PLOT SCALE: 1"=40'



4

4

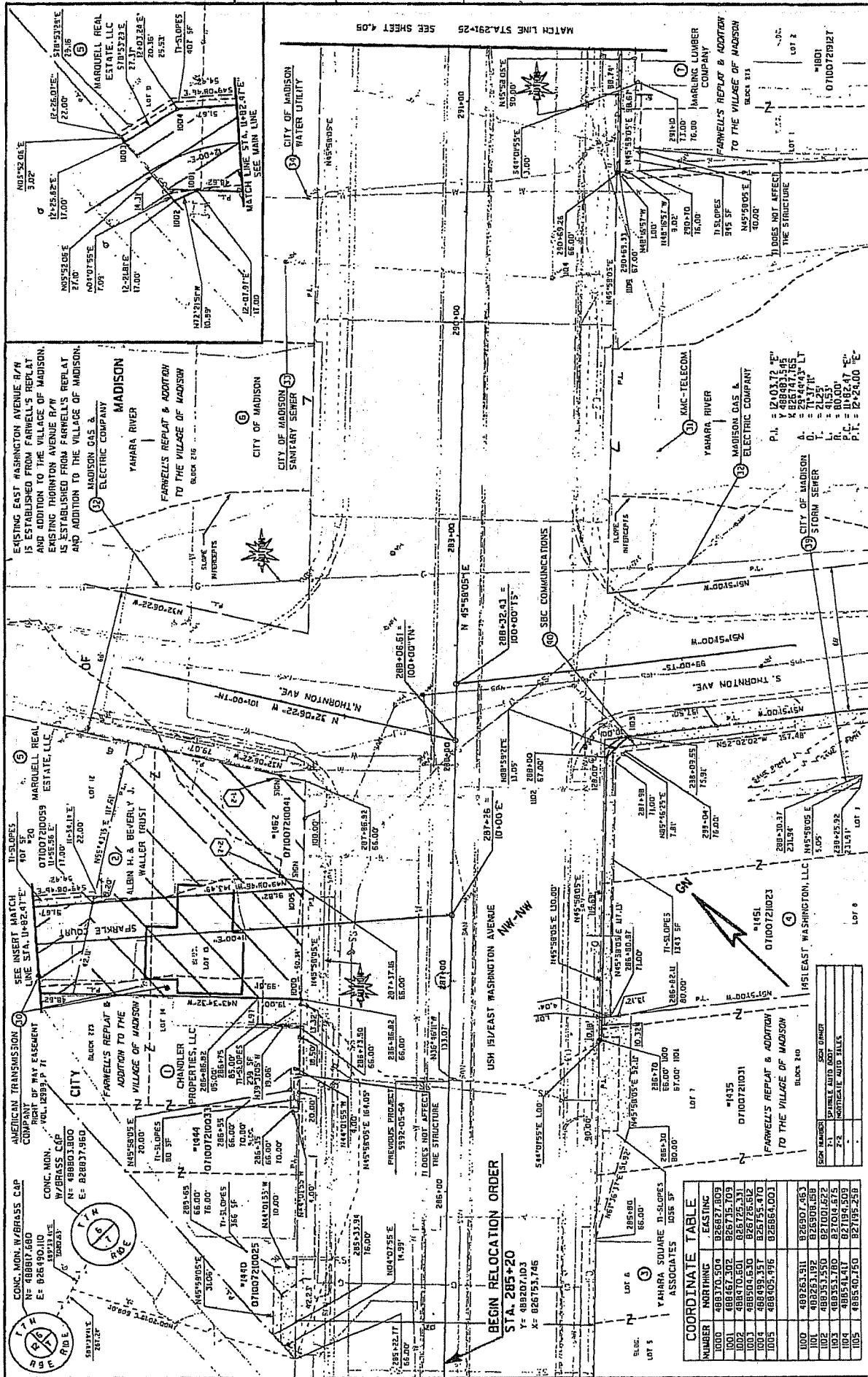
BEGIN RELOCATION ORDER
 STA. 285+20
 N - 489407.003
 E - 826753.746

END RELOCATION ORDER
 STA. 303+30
 N - 489471.955
 E - 826806.216

REVISION DATE SHEET 8 OF 8 MARCH 11, 2005	DATE SEPTEMBER 8, 2004	HWY: USH 151 COUNTY: DADE	STATE R/W PROJECT NUMBER 5992-05-59 CONSTRUCTION PROJECT NUMBER 5992-05-61	PLAT SHEET NO: 4.03 PS&E SHEET E
---	---------------------------	------------------------------	---	--

FILE NAME: I:\G:\MID\10031\10031\10031.dwg
 PLOT DATE: 03 MAR 2005
 PLOT BY: T. H. ENGINEERING
 PLOT NAME: MADISON CITY
 PLOT SCALE: 1" = 40'

WFO047/CADD5 SHEET 70



MATCH LINE STA. 291+25 SEE SHEET 4.05

EXISTING EAST WASHINGTON AVENUE R/W IS ESTABLISHED FROM FARWELL'S REPLAT AND ADDITION TO THE VILLAGE OF MADISON. EXISTING THORNTON AVENUE R/W IS ESTABLISHED FROM FARWELL'S REPLAT AND ADDITION TO THE VILLAGE OF MADISON.

CONC. MON. W/BRASS CAP
N= 488817.680
E= 826490.110

CONC. MON. W/BRASS CAP
N= 488817.680
E= 826490.110

CONC. MON. W/BRASS CAP
N= 488817.680
E= 826490.110

CONC. MON. W/BRASS CAP
N= 488817.680
E= 826490.110

MADISON
YAHARA RIVER
FARWELL'S REPLAT & ADDITION
TO THE VILLAGE OF MADISON
BLOCK 216

CITY OF MADISON
SANITARY SEWER

SEC COMMUNICATIONS

YAHARA RIVER
MADISON GAS & ELECTRIC COMPANY

CITY OF MADISON
STORM SEWER

1435
D7100721031
FARWELL'S REPLAT & ADDITION
TO THE VILLAGE OF MADISON
BLOCK 210

1435
D7100721031
FARWELL'S REPLAT & ADDITION
TO THE VILLAGE OF MADISON
BLOCK 210

1435
D7100721031
FARWELL'S REPLAT & ADDITION
TO THE VILLAGE OF MADISON
BLOCK 210

1435
D7100721031
FARWELL'S REPLAT & ADDITION
TO THE VILLAGE OF MADISON
BLOCK 210

1435
D7100721031
FARWELL'S REPLAT & ADDITION
TO THE VILLAGE OF MADISON
BLOCK 210

1435
D7100721031
FARWELL'S REPLAT & ADDITION
TO THE VILLAGE OF MADISON
BLOCK 210

1435
D7100721031
FARWELL'S REPLAT & ADDITION
TO THE VILLAGE OF MADISON
BLOCK 210

1435
D7100721031
FARWELL'S REPLAT & ADDITION
TO THE VILLAGE OF MADISON
BLOCK 210

1435
D7100721031
FARWELL'S REPLAT & ADDITION
TO THE VILLAGE OF MADISON
BLOCK 210

1435
D7100721031
FARWELL'S REPLAT & ADDITION
TO THE VILLAGE OF MADISON
BLOCK 210

1435
D7100721031
FARWELL'S REPLAT & ADDITION
TO THE VILLAGE OF MADISON
BLOCK 210

1435
D7100721031
FARWELL'S REPLAT & ADDITION
TO THE VILLAGE OF MADISON
BLOCK 210

1435
D7100721031
FARWELL'S REPLAT & ADDITION
TO THE VILLAGE OF MADISON
BLOCK 210

1435
D7100721031
FARWELL'S REPLAT & ADDITION
TO THE VILLAGE OF MADISON
BLOCK 210

1435
D7100721031
FARWELL'S REPLAT & ADDITION
TO THE VILLAGE OF MADISON
BLOCK 210

1435
D7100721031
FARWELL'S REPLAT & ADDITION
TO THE VILLAGE OF MADISON
BLOCK 210

1435
D7100721031
FARWELL'S REPLAT & ADDITION
TO THE VILLAGE OF MADISON
BLOCK 210

1435
D7100721031
FARWELL'S REPLAT & ADDITION
TO THE VILLAGE OF MADISON
BLOCK 210

1435
D7100721031
FARWELL'S REPLAT & ADDITION
TO THE VILLAGE OF MADISON
BLOCK 210

1435
D7100721031
FARWELL'S REPLAT & ADDITION
TO THE VILLAGE OF MADISON
BLOCK 210

1435
D7100721031
FARWELL'S REPLAT & ADDITION
TO THE VILLAGE OF MADISON
BLOCK 210

1435
D7100721031
FARWELL'S REPLAT & ADDITION
TO THE VILLAGE OF MADISON
BLOCK 210

1435
D7100721031
FARWELL'S REPLAT & ADDITION
TO THE VILLAGE OF MADISON
BLOCK 210

1435
D7100721031
FARWELL'S REPLAT & ADDITION
TO THE VILLAGE OF MADISON
BLOCK 210

1435
D7100721031
FARWELL'S REPLAT & ADDITION
TO THE VILLAGE OF MADISON
BLOCK 210

1435
D7100721031
FARWELL'S REPLAT & ADDITION
TO THE VILLAGE OF MADISON
BLOCK 210

1435
D7100721031
FARWELL'S REPLAT & ADDITION
TO THE VILLAGE OF MADISON
BLOCK 210

1435
D7100721031
FARWELL'S REPLAT & ADDITION
TO THE VILLAGE OF MADISON
BLOCK 210

1435
D7100721031
FARWELL'S REPLAT & ADDITION
TO THE VILLAGE OF MADISON
BLOCK 210

1435
D7100721031
FARWELL'S REPLAT & ADDITION
TO THE VILLAGE OF MADISON
BLOCK 210

1435
D7100721031
FARWELL'S REPLAT & ADDITION
TO THE VILLAGE OF MADISON
BLOCK 210

1435
D7100721031
FARWELL'S REPLAT & ADDITION
TO THE VILLAGE OF MADISON
BLOCK 210

1435
D7100721031
FARWELL'S REPLAT & ADDITION
TO THE VILLAGE OF MADISON
BLOCK 210

1435
D7100721031
FARWELL'S REPLAT & ADDITION
TO THE VILLAGE OF MADISON
BLOCK 210

1435
D7100721031
FARWELL'S REPLAT & ADDITION
TO THE VILLAGE OF MADISON
BLOCK 210

NUMBER	NORTHING	EASTING
1000	488370.500	826827.803
1001	488467.302	826715.703
1002	488470.000	826725.331
1003	488358.530	826728.592
1004	488402.192	826663.003
1005	488263.311	826907.053
1006	488263.192	826908.050
1007	488353.550	821001.622
1008	488353.780	821019.675
1009	488511.417	821194.609
1005	488540.750	821195.259

STATE R/W PROJECT NUMBER 5992-05-59
CONSTRUCTION PROJECT NUMBER 5992-05-61
PLAT SHEET NO: 4.04
PS&E SHEET
E

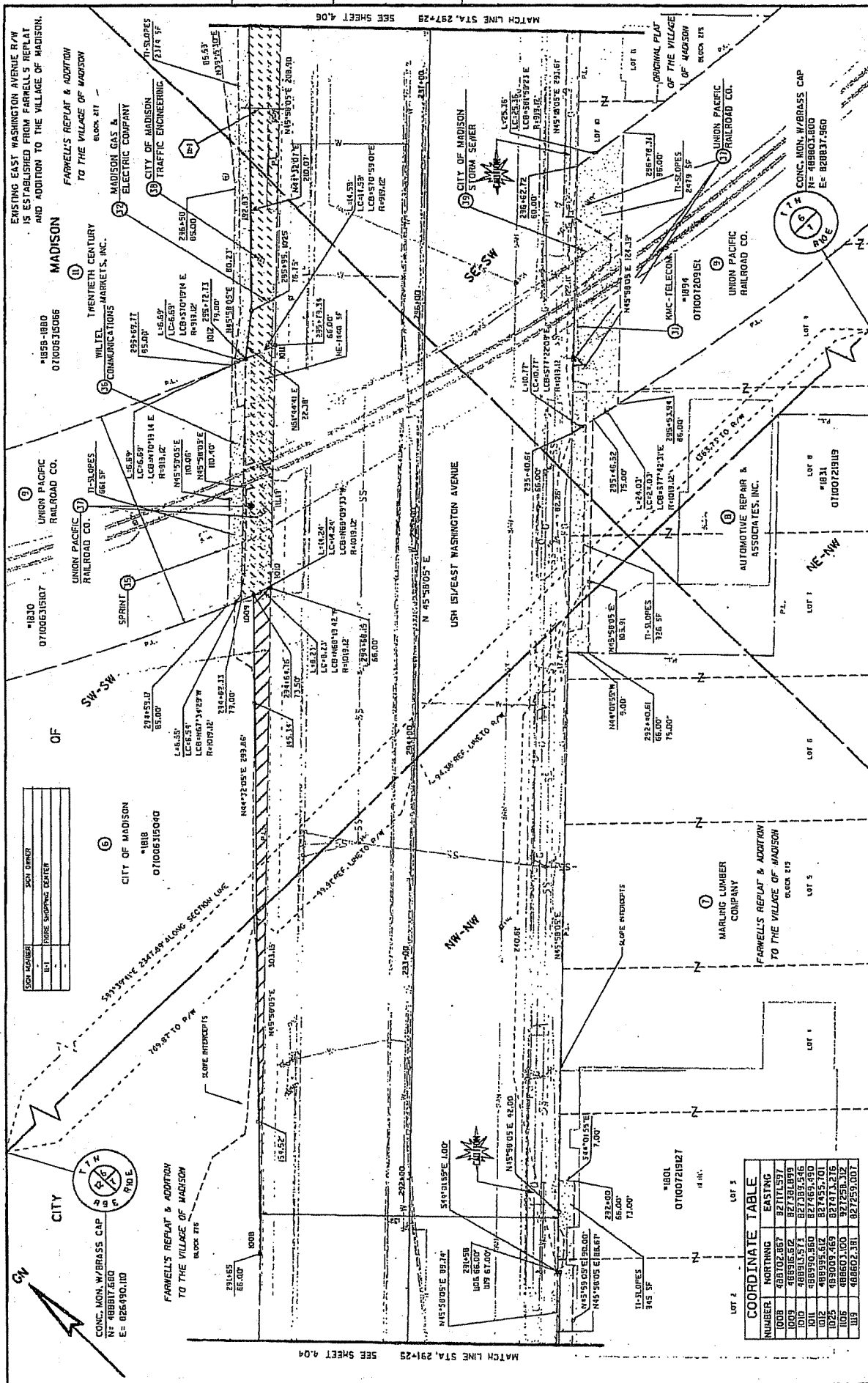
DATE: SEPTEMBER 8, 2004
SCALE: FEET
0 20 40

HWY: USH 151
COUNTY: DANE
GRID FACTOR

REVISION DATE: SEP 10, 2004
MARCH 1, 2005

PLAT NAME: USH 151/100531/056*04.04
PLOT DATE: 03 MAR 2005
PLOT SCALE: 1"=40'

FILE NAME: G:\V\10\100531\056*04.04

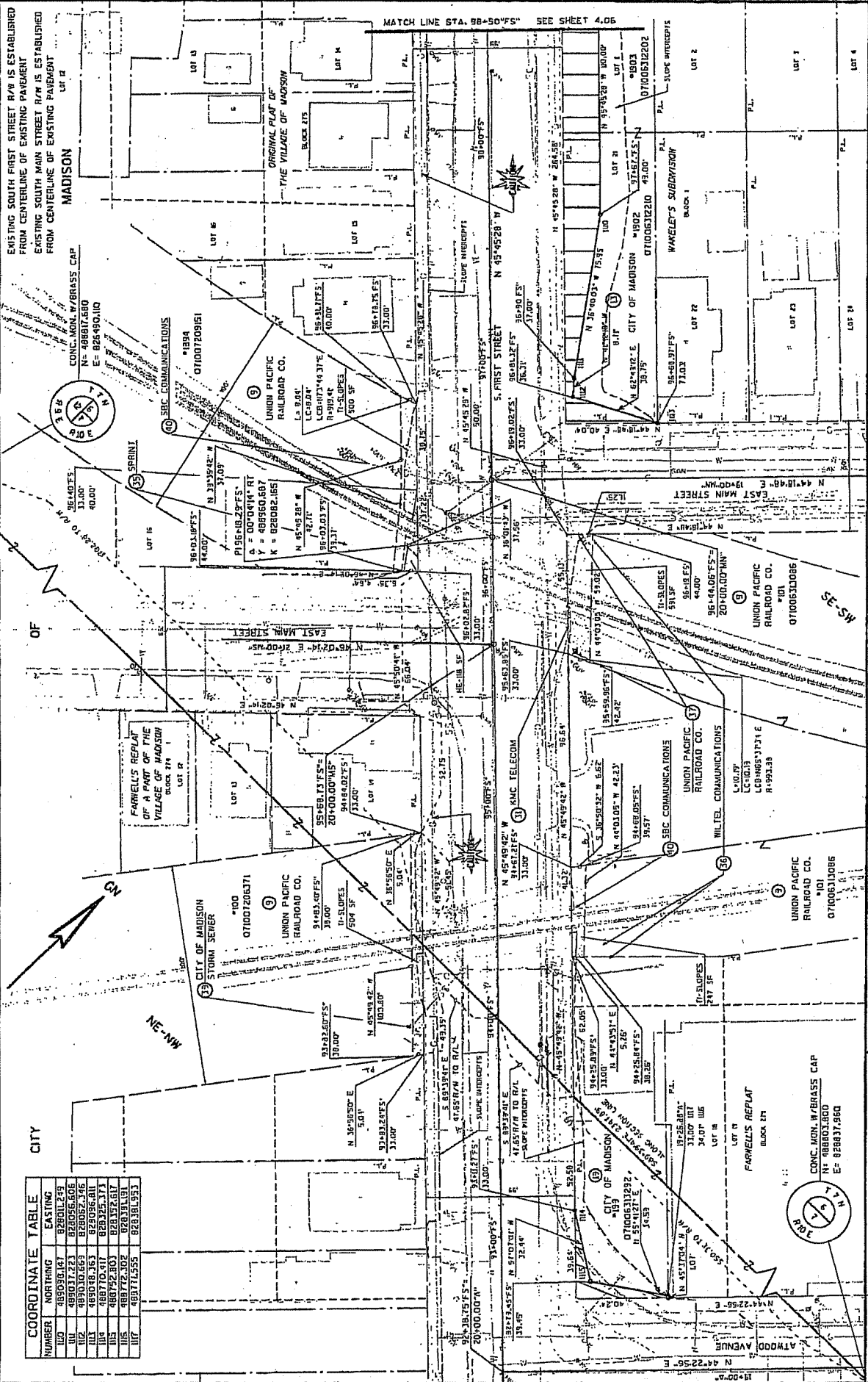


SECTION	SECTION NUMBER	SECTION OWNER
1	1	THOSE SHIPPERS CENTER
2	2	
3	3	
4	4	
5	5	
6	6	

NUMBER	NORTHING	EASTING
1008	488102.867	827115.597
1009	488916.602	827381.899
1010	488913.571	827395.546
1011	488990.360	827469.490
1012	488995.612	827485.701
1013	489009.469	827473.216
1014	488603.100	827258.312
1015	488602.381	827259.007

REVISION DATE: SEPT. 6, 2004
 MARCH 1, 2005
 DATE: SEPTEMBER 8, 2004
 COUNTY: DANE
 HWY: USH 151
 STATE R/W PROJECT NUMBER 5992-05-59
 CONSTRUCTION PROJECT NUMBER 5992-05-61
 PLAT SHEET NO: 4.05
 PS&E SHEET E

FILE NAME: J:\000000\00053\0053r\0054.dgn
 PLOT DATE: 03 MAR 2005
 PLOT NAME: I:\Engineering\00053\0053r\0054.dgn
 PLOT SCALE: 1"=40'



COORDINATE TABLE

NUMBER	NORTHING	EASTING
100	489036.41	824062.99
101	489036.41	824062.99
102	489036.41	824062.99
103	489036.41	824062.99
104	489036.41	824062.99
105	489036.41	824062.99
106	489036.41	824062.99
107	489036.41	824062.99
108	489036.41	824062.99
109	489036.41	824062.99
110	489036.41	824062.99
111	489036.41	824062.99
112	489036.41	824062.99
113	489036.41	824062.99
114	489036.41	824062.99
115	489036.41	824062.99
116	489036.41	824062.99
117	489036.41	824062.99
118	489036.41	824062.99
119	489036.41	824062.99
120	489036.41	824062.99

STATE R/W PROJECT NUMBER 5992-05-59
 CONSTRUCTION PROJECT NUMBER 5992-05-61
 DATE: SEPTEMBER 8, 2004
 COUNTY: DANE
 HWY: USH 151
 PLAT SHEET NO: 4.07
 PS&E SHEET E

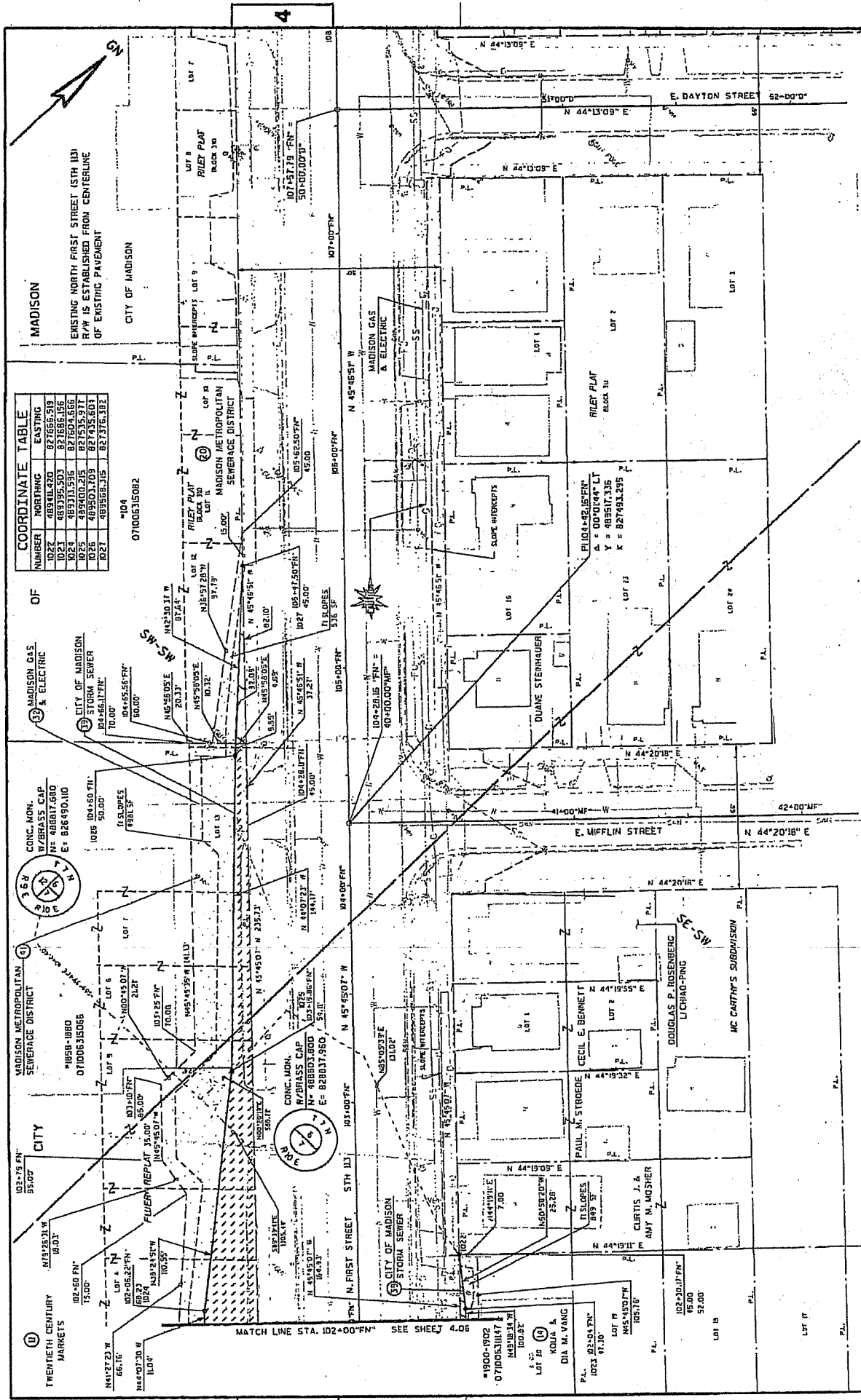
REVISION DATE: SEPT. 8, 2004
 MARCH 1, 2005

SCALE: FEET
 0 20 40

CRD FACTOR

FILE NAME: G:\vtr\m\0053\0356\407.dgn

PLAT SCALE: NBDOT/CADDIS SHEET 75



COORDINATE TABLE

NUMBER	NORTHING	EASTING
1022	489304.270	827656.519
1023	489355.500	827656.106
1024	489406.720	827655.693
1025	489457.940	827655.280
1026	489509.160	827654.867
1027	489560.380	827654.454
1028	489611.600	827654.041
1029	489662.820	827653.628
1030	489714.040	827653.215
1031	489765.260	827652.802
1032	489816.480	827652.389
1033	489867.700	827651.976
1034	489918.920	827651.563
1035	489970.140	827651.150
1036	490021.360	827650.737
1037	490072.580	827650.324
1038	490123.800	827649.911
1039	490175.020	827649.498
1040	490226.240	827649.085
1041	490277.460	827648.672
1042	490328.680	827648.259
1043	490379.900	827647.846
1044	490431.120	827647.433
1045	490482.340	827647.020
1046	490533.560	827646.607
1047	490584.780	827646.194
1048	490636.000	827645.781
1049	490687.220	827645.368
1050	490738.440	827644.955
1051	490789.660	827644.542
1052	490840.880	827644.129
1053	490892.100	827643.716
1054	490943.320	827643.303
1055	490994.540	827642.890
1056	491045.760	827642.477
1057	491096.980	827642.064
1058	491148.200	827641.651
1059	491199.420	827641.238
1060	491250.640	827640.825
1061	491301.860	827640.412
1062	491353.080	827639.999
1063	491404.300	827639.586
1064	491455.520	827639.173
1065	491506.740	827638.760
1066	491557.960	827638.347
1067	491609.180	827637.934
1068	491660.400	827637.521
1069	491711.620	827637.108
1070	491762.840	827636.695
1071	491814.060	827636.282
1072	491865.280	827635.869
1073	491916.500	827635.456
1074	491967.720	827635.043
1075	492018.940	827634.630
1076	492070.160	827634.217
1077	492121.380	827633.804
1078	492172.600	827633.391
1079	492223.820	827632.978
1080	492275.040	827632.565
1081	492326.260	827632.152
1082	492377.480	827631.739
1083	492428.700	827631.326
1084	492479.920	827630.913
1085	492531.140	827630.500
1086	492582.360	827630.087
1087	492633.580	827629.674
1088	492684.800	827629.261
1089	492736.020	827628.848
1090	492787.240	827628.435
1091	492838.460	827628.022
1092	492889.680	827627.609
1093	492940.900	827627.196
1094	492992.120	827626.783
1095	493043.340	827626.370
1096	493094.560	827625.957
1097	493145.780	827625.544
1098	493197.000	827625.131
1099	493248.220	827624.718
1100	493299.440	827624.305
1101	493350.660	827623.892
1102	493401.880	827623.479
1103	493453.100	827623.066
1104	493504.320	827622.653
1105	493555.540	827622.240
1106	493606.760	827621.827
1107	493657.980	827621.414
1108	493709.200	827621.001
1109	493760.420	827620.588
1110	493811.640	827620.175
1111	493862.860	827619.762
1112	493914.080	827619.349
1113	493965.300	827618.936
1114	494016.520	827618.523
1115	494067.740	827618.110
1116	494118.960	827617.697
1117	494170.180	827617.284
1118	494221.400	827616.871
1119	494272.620	827616.458
1120	494323.840	827616.045
1121	494375.060	827615.632
1122	494426.280	827615.219
1123	494477.500	827614.806
1124	494528.720	827614.393
1125	494579.940	827613.980
1126	494631.160	827613.567
1127	494682.380	827613.154
1128	494733.600	827612.741
1129	494784.820	827612.328
1130	494836.040	827611.915
1131	494887.260	827611.502
1132	494938.480	827611.089
1133	494989.700	827610.676
1134	495040.920	827610.263
1135	495092.140	827609.850
1136	495143.360	827609.437
1137	495194.580	827609.024
1138	495245.800	827608.611
1139	495297.020	827608.198
1140	495348.240	827607.785
1141	495399.460	827607.372
1142	495450.680	827606.959
1143	495501.900	827606.546
1144	495553.120	827606.133
1145	495604.340	827605.720
1146	495655.560	827605.307
1147	495706.780	827604.894
1148	495758.000	827604.481
1149	495809.220	827604.068
1150	495860.440	827603.655
1151	495911.660	827603.242
1152	495962.880	827602.829
1153	496014.100	827602.416
1154	496065.320	827602.003
1155	496116.540	827601.590
1156	496167.760	827601.177
1157	496218.980	827600.764
1158	496270.200	827600.351
1159	496321.420	827600.938
1160	496372.640	827600.525
1161	496423.860	827600.112
1162	496475.080	827599.699
1163	496526.300	827599.286
1164	496577.520	827598.873
1165	496628.740	827598.460
1166	496679.960	827598.047
1167	496731.180	827597.634
1168	496782.400	827597.221
1169	496833.620	827596.808
1170	496884.840	827596.395
1171	496936.060	827595.982
1172	496987.280	827595.569
1173	497038.500	827595.156
1174	497089.720	827594.743
1175	497140.940	827594.330
1176	497192.160	827593.917
1177	497243.380	827593.504
1178	497294.600	827593.091
1179	497345.820	827592.678
1180	497397.040	827592.265
1181	497448.260	827591.852
1182	497499.480	827591.439
1183	497550.700	827591.026
1184	497601.920	827590.613
1185	497653.140	827590.200
1186	497704.360	827589.787
1187	497755.580	827589.374
1188	497806.800	827588.961
1189	497858.020	827588.548
1190	497909.240	827588.135
1191	497960.460	827587.722
1192	498011.680	827587.309
1193	498062.900	827586.896
1194	498114.120	827586.483
1195	498165.340	827586.070
1196	498216.560	827585.657
1197	498267.780	827585.244
1198	498319.000	827584.831
1199	498370.220	827584.418
1200	498421.440	827584.005
1201	498472.660	827583.592
1202	498523.880	827583.179
1203	498575.100	827582.766
1204	498626.320	827582.353
1205	498677.540	827581.940
1206	498728.760	827581.527
1207	498780.980	827581.114
1208	498832.200	827580.701
1209	498883.420	827580.288
1210	498934.640	827579.875
1211	498985.860	827579.462
1212	499037.080	827579.049
1213	499088.300	827578.636
1214	499139.520	827578.223
1215	499190.740	827577.810
1216	499241.960	827577.397
1217	499293.180	827576.984
1218	499344.400	827576.571
1219	499395.620	827576.158
1220	499446.840	827575.745
1221	499498.060	827575.332
1222	499549.280	827574.919
1223	499600.500	827574.506
1224	499651.720	827574.093
1225	499702.940	827573.680
1226	499754.160	827573.267
1227	499805.380	827572.854
1228	499856.600	827572.441
1229	499907.820	827572.028
1230	499959.040	827571.615
1231	500010.260	827571.202
1232	500061.480	827570.789
1233	500112.700	827570.376
1234	500163.920	827569.963
1235	500215.140	827569.550
1236	500266.360	827569.137
1237	500317.580	827568.724
1238	500368.800	827568.311
1239	500420.020	827567.898
1240	500471.240	827567.485
1241	500522.460	827567.072
1242	500573.680	827566.659
1243	500624.900	827566.246
1244	500676.120	827565.833
1245	500727.340	827565.420
1246	500778.560	827565.007
1247	500829.780	827564.594
1248	500881.000	827564.181
1249	500932.220	827563.768
1250	500983.440	827563.355
1251	501034.660	827562.942
1252	501085.880	827562.529
1253	501137.100	827562.116
1254	501188.320	827561.703
1255	501239.540	827561.290
1256	501290.760	827560.877
1257	501341.980	827560.464
1258	501393.200	827560.051
1259	501444.420	827559.638
1260	501495.640	827559.225
1261	501546.860	827558.812
1262	501598.080	827558.399
1263	501649.300	827557.986
1264	501700.520	827557.573
1265	501751.740	827557.160
1266	501802.960	827556.747
1267	501854.180	827556.334
1268	501905.400	827555.921
1269	501956.620	827555.508
1270	502007.840	827555.095
1271	502059.060	827554.682
1272	502110.280	827554.269
1273	502161.500	827553.856
1274	502212.720	827553.443
1275	502263.940	827553.030
1276	502315.160	827552.617
1277	502366.380	827552.204
1278	502417.600	827551.791
1279	502468.820	827551.378
1280	502520.040	827550.965
1281	502571.260	827550.552
1282	502622.480	827550.139
1283	502673.700	827549.726
1284	502724.920	827549.313
1285	502776.140	827548.900
1286	502827.360	827548.487
1287	502878.580	827548.074
1288	502929.800	827547.661
1289	502981.020	827547.248
1290	503032.240	827546.835
1291	503083.460	827546.422
1292	503134.680	827546.009
1293	503185.900	827545.596
1294	503237.120	827545.183
1295	503288.340	827544.770
1296	503339.560	827544.357
1297	503390.780	827543.944
1298	503442.000	827543.531