



NW CORNER  
SEC 5, T7N-R10E  
FD BRASS CAP MON  
IN WATER BOX  
N: 494537.77  
E: 831541.49  
(N: 494537.66)  
(E: 831541.40)

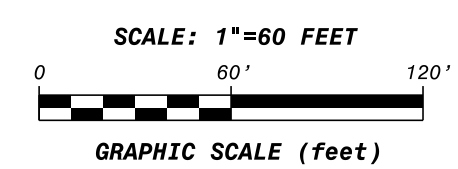
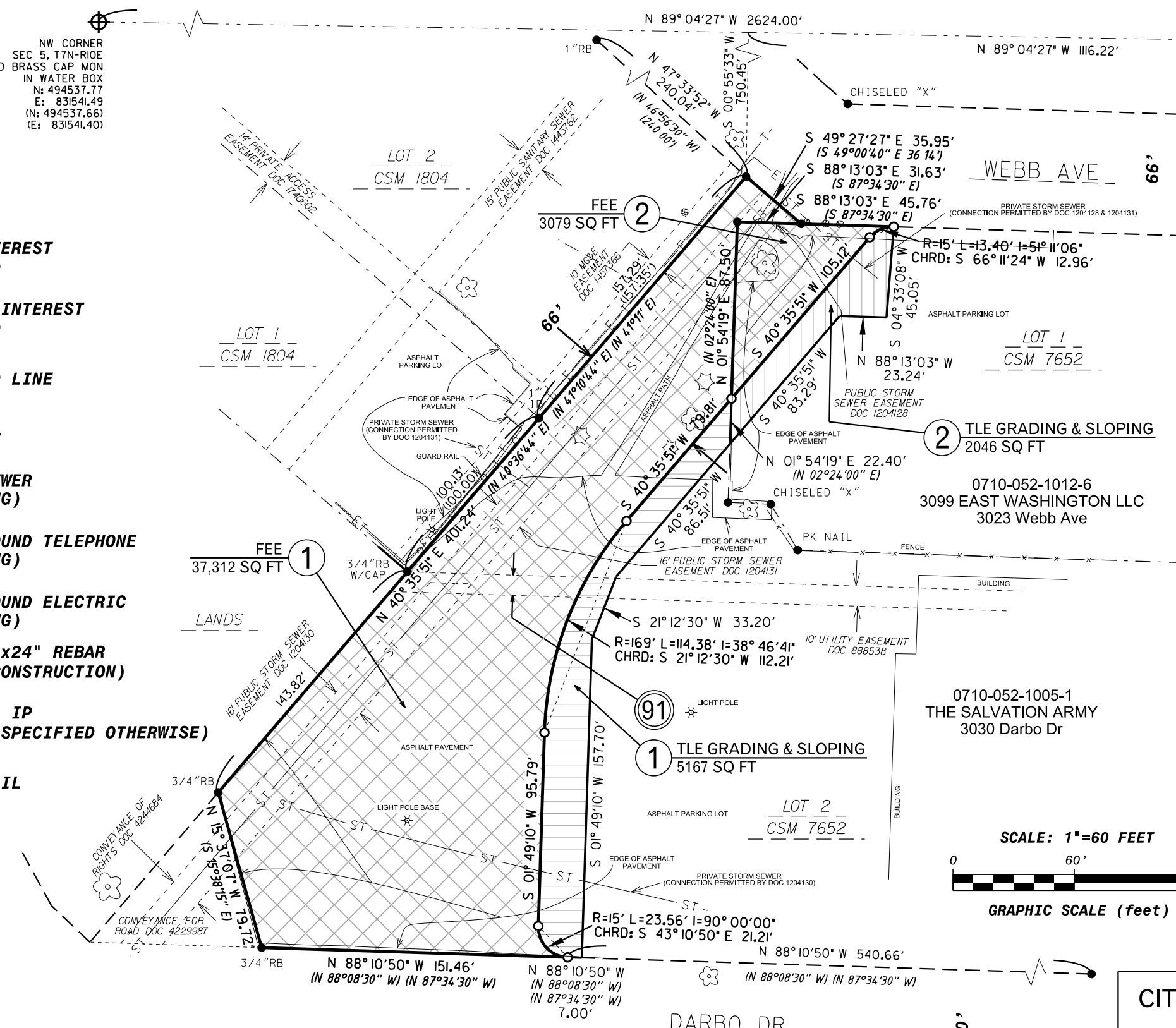
N 88° 27' 54" W 11.27'  
S 1/4 CORNER  
SEC 32, T8N-R10E  
FD BRASS CAP MON  
N: 494495.37  
E: 834165.14  
(N: 494495.40)  
(E: 834165.13)  
N 1/4 CORNER  
SEC 5, T7N-R10E  
FD BRASS CAP MON  
N: 494495.06  
E: 834176.41  
(N: 494495.08)  
(E: 834176.37)

**LEGEND**

- ① **LAND INTEREST REQUIRED**
- ⑨1 **UTILITY INTEREST REQUIRED**
- **LOT/DEED LINE**
- **R/W LINE**
- ST --- **STORM SEWER (EXISTING)**
- T --- **UNDERGROUND TELEPHONE (EXISTING)**
- E --- **UNDERGROUND ELECTRIC (EXISTING)**
- **SET 3/4"x24" REBAR (AFTER CONSTRUCTION)**
- **FOUND 2" IP (UNLESS SPECIFIED OTHERWISE)**
- **GUARD RAIL**
- x-x **FENCE**

- FEE ACQUISITION FOR PUBLIC STREET R/W**
- TEMP LIMITED ESMT FOR SLOPING & GRADING:**

PLOT SCALE: PLOT NAME: REV. DATE: ORIGINATOR:



RELOCATION ORDER APPROVED BY THE COMMON COUNCIL:	
RES _____	FILE ID NO _____
_____ CITY CLERK	_____ DATE
RELOCATION ORDER APPROVED BY THE BOARD OF PUBLIC WORKS:	
_____ EXECUTIVE SECRETARY	_____ DATE
RELOCATION ORDER APPROVED BY THE PLAN COMMISSION:	
_____ EXECUTIVE SECRETARY	_____ DATE

**CITY OF MADISON RELOCATION ORDER**

"PLAT OF LAND INTERESTS REQUIRED FOR THE CONSTRUCTION OF IMPROVEMENTS FOR PUBLIC STREET", LOTS 1 & 2, CSM 7652, LOCATED IN THE NE 1/4 & NW 1/4 OF THE NW 1/4 OF SEC 5, T 7 N, R 10 E, CITY OF MADISON, DANE COUNTY, WI.

CITY ENGINEERING DIVISION  
ENGR. PROJECT NO. 10234  
REAL ESTATE PROJECT NO. 11354  
COUNTY CLERK FILE NO. \_\_\_\_\_

OCTOBER 13, 2017 djs  
REV.