



210 Bernard Court.  
Looking south at north side building.



210 Bernard Court.  
Looking west from Bernard Court at front entrance to building.



Phase I Environmental Site Assessment

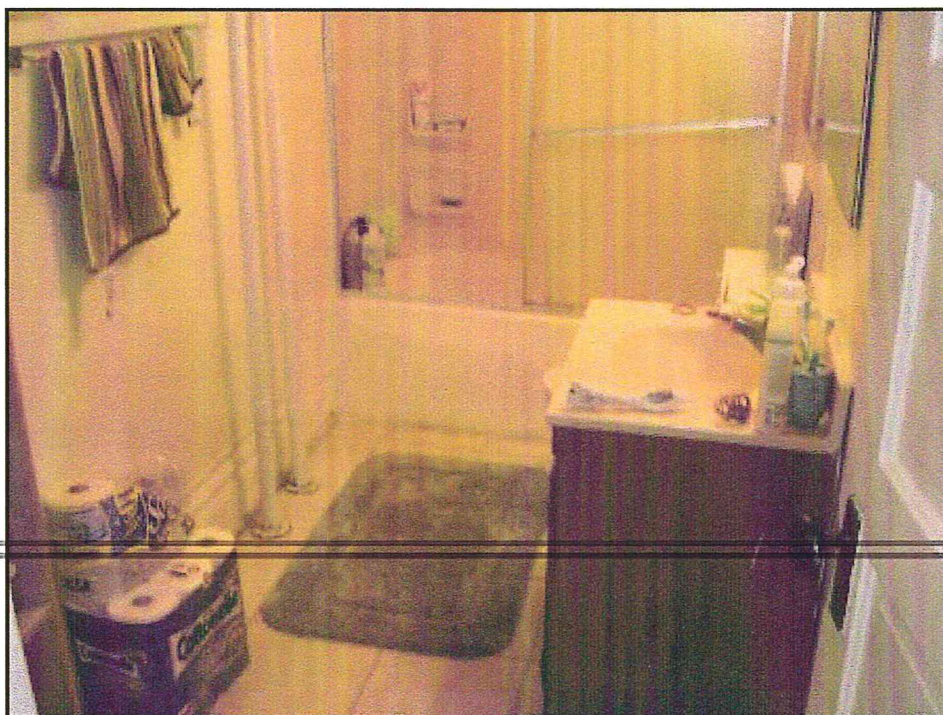


210 Bernard Court.  
Looking at possible asbestos wrapped pipes in front entry way.

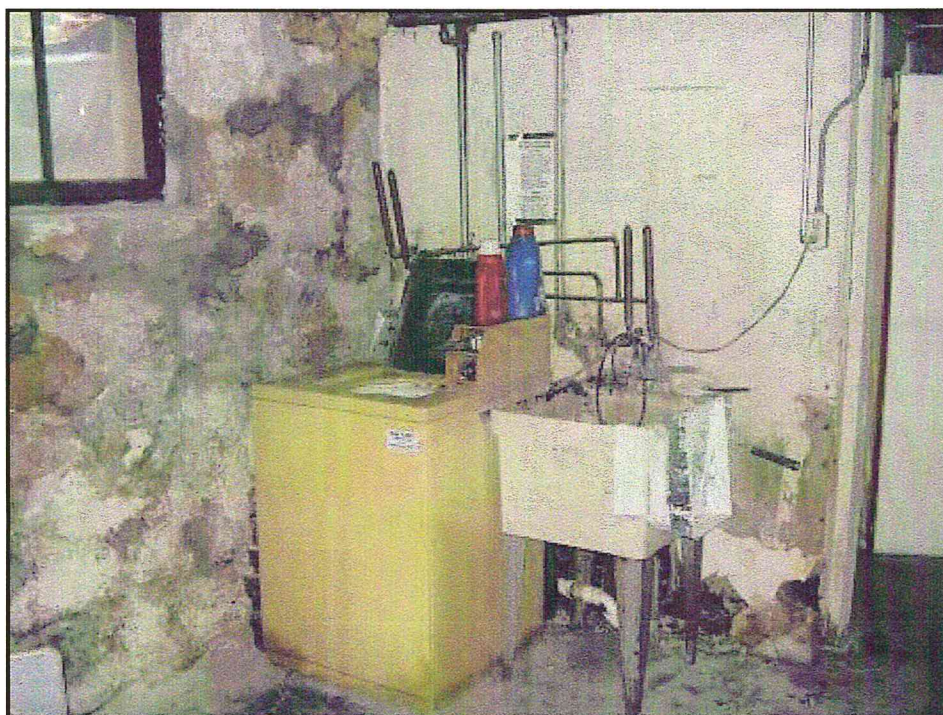


210 Bernard Court.  
Typical common area. Pipes in background are painted steel with no wrapping material.





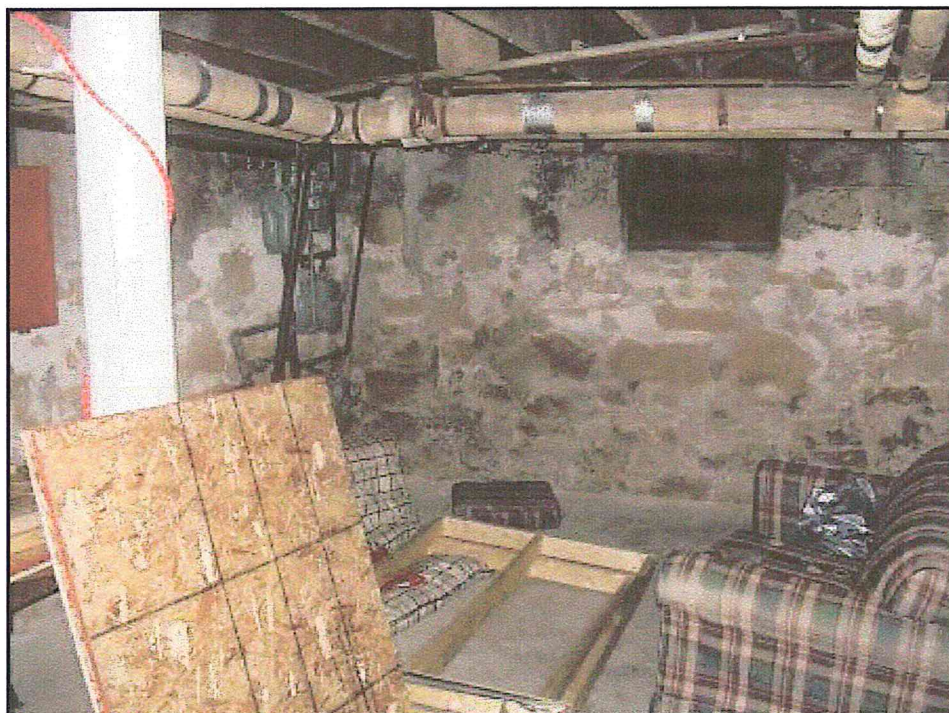
210 Bernard Court.  
Typical bathroom, pipes running along wall are painted with no wrapping.



210 Bernard Court.  
Laundry room in basement.



Phase I Environmental Site Assessment



210 Bernard Court.  
Basement area showing stone foundation and wrapped pipes along ceiling.



201 Bernard Court.  
Basement area showing more wrapped pipes along ceiling.



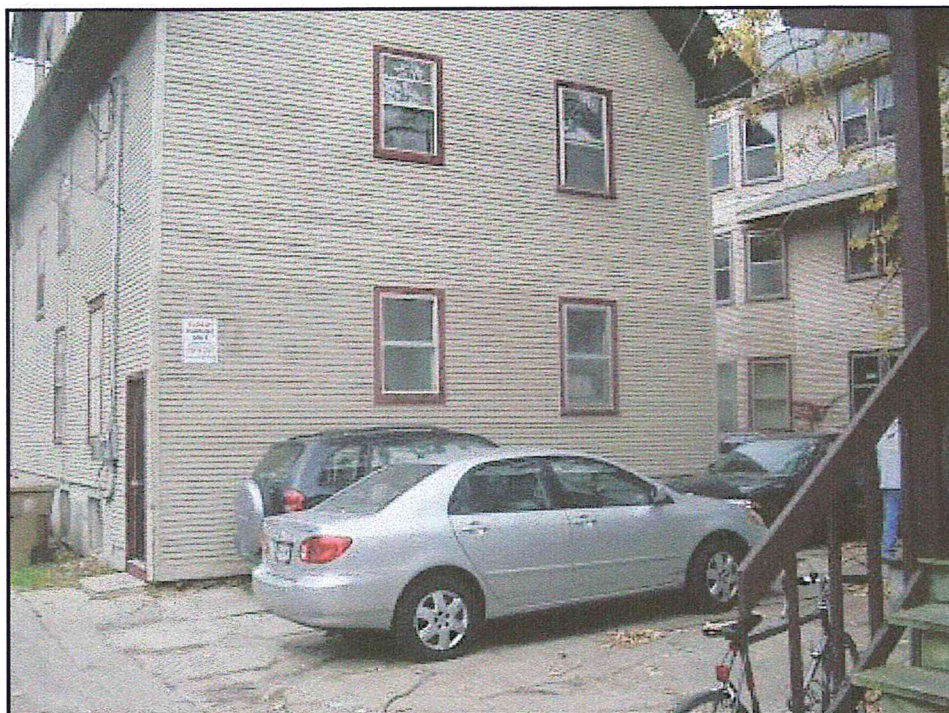


210 Bernard Court.  
Common area.

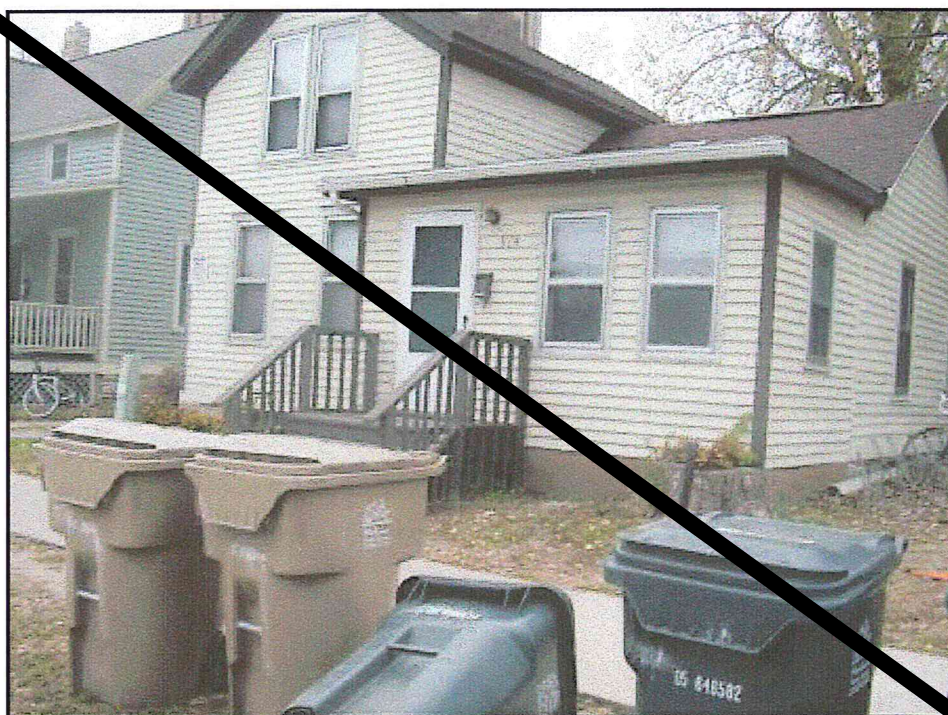


210 Bernard Court.  
Typical bedroom consisting of drywall or plaster walls and ceilings.





210 Bernard Court.  
Looking east at back of building.



924 West Dayton Street.  
Looking north from West Dayton Street at front entrance to building.