


Map 1:
Planning Areas

High Point - Raymond
Neighborhood Development Plan
Amendment
June 2017

City of Madison Planning Division

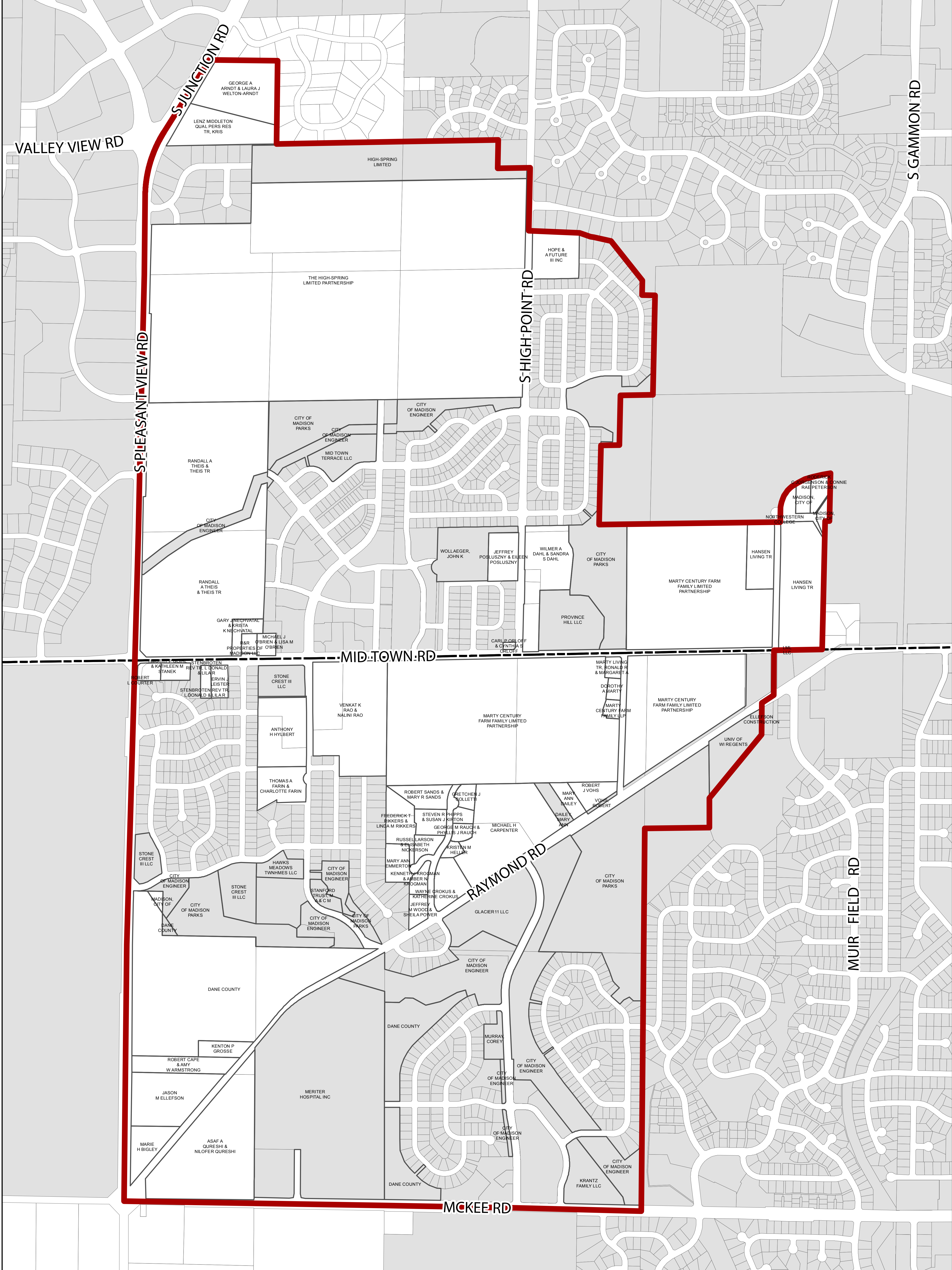
- Planning Area
- Amendment Areas
- Township Boundary
- City of Madison Boundary





1,100 550 0 Feet









Map 2:
Municipal Jurisdiction
& Property Ownership

High Point - Raymond
Neighborhood Development Plan
Amendment
June 2017

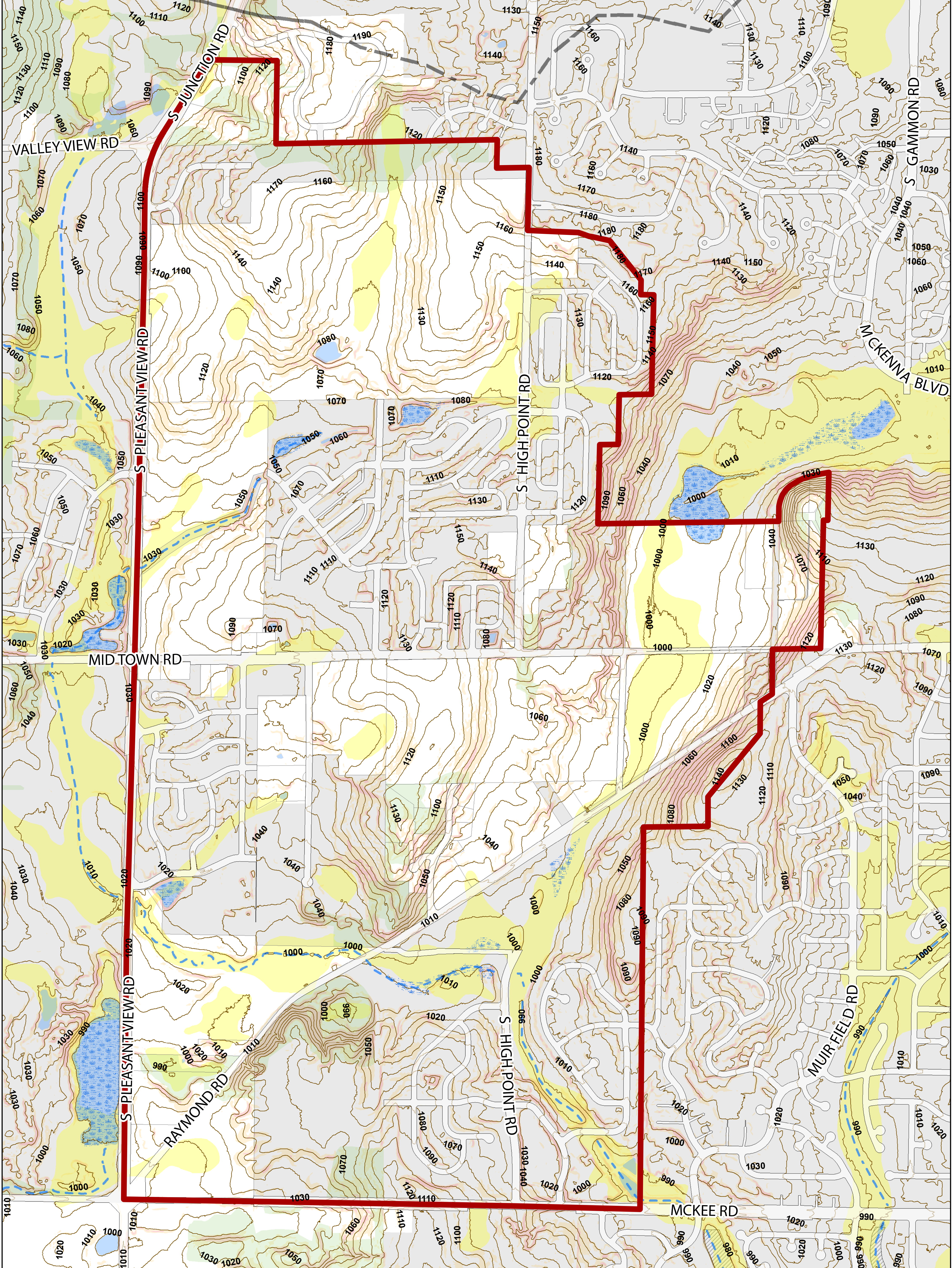
City of Madison Planning Division

-  Planning Area
-  Township Boundary
-  City of Madison
-  Other Municipalities



1,100 550 0 Feet






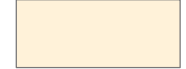













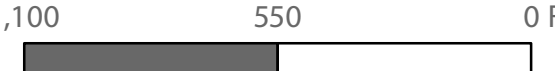
Map 3:
Natural Features

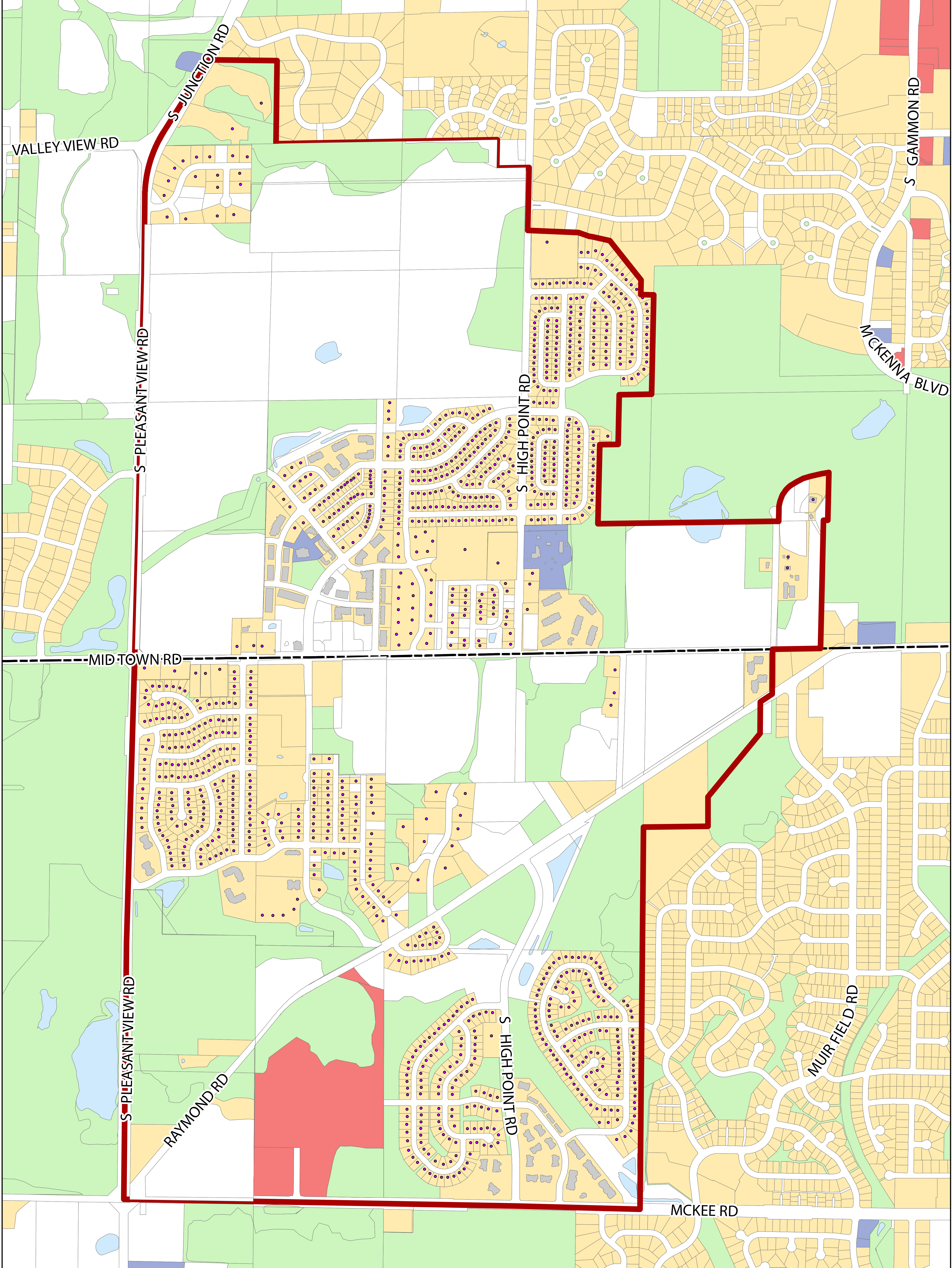
High Point - Raymond
Neighborhood Development Plan
Amendment
June 2017

City of Madison Planning Division

 Planning Area	 Major Ridgeline	 Soils with Hydric Inclusions
 City of Madison	 10' Elevation Contour	 Slopes 12% to 20%
 Other Municipalities	 Surface Water	 Slopes 20% or Greater
	 Intermittent Stream	 Woodland
	 Wetland	
	 Floodplain	



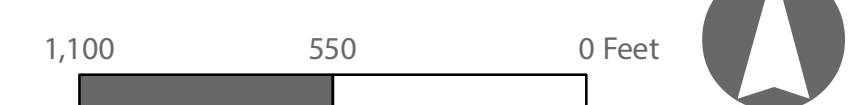


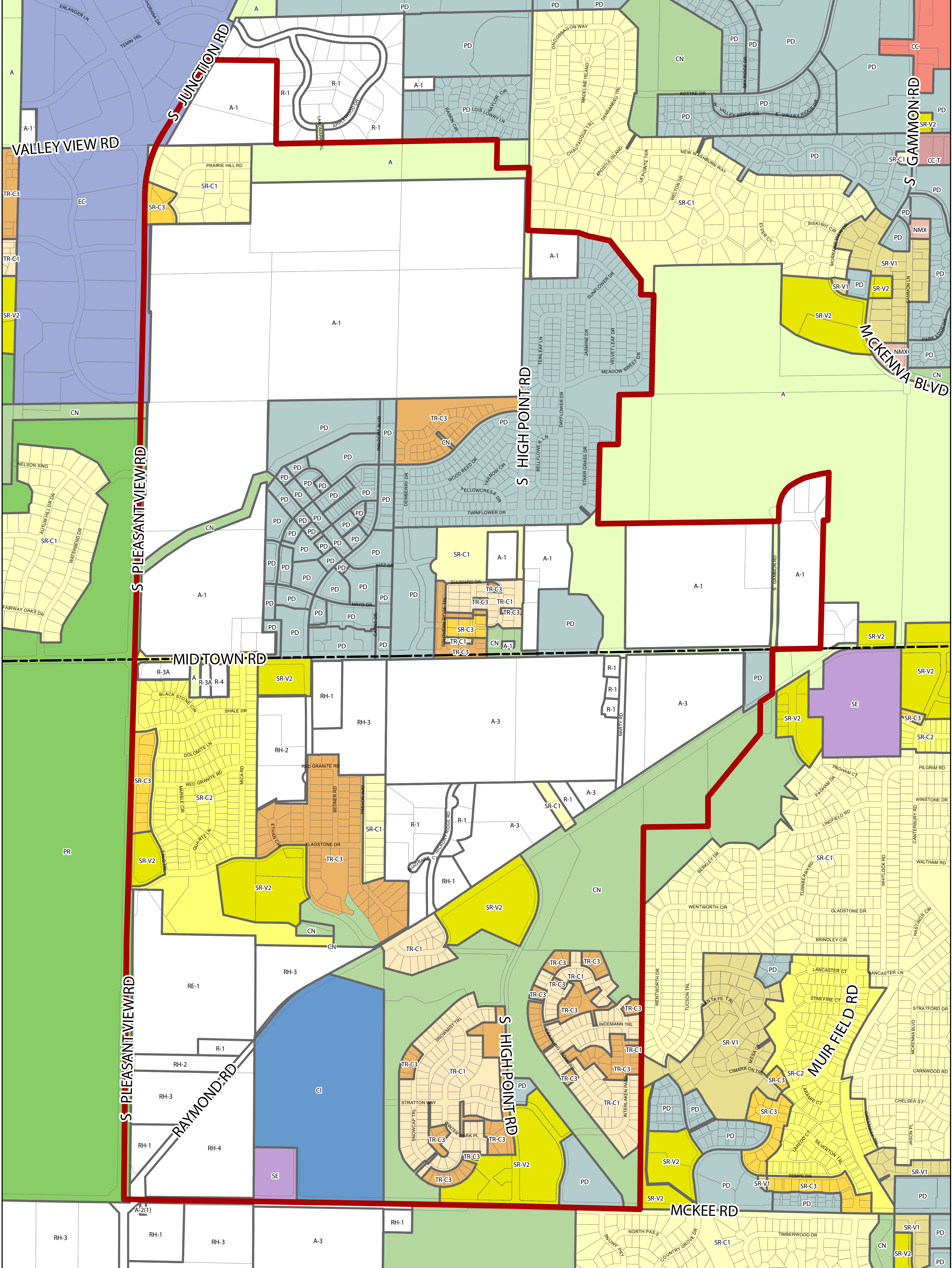
Map 4:
Existing Land Use

High Point - Raymond
Neighborhood Development Plan
Amendment
June 2017

City of Madison Planning Division

- | | | |
|-------------------|------------------------|-----------------------|
| Planning Area | Agriculture and Vacant | Residential |
| Township Boundary | Commercial | Institutional |
| Single Family | Building Footprints | Parks and Open Spaces |





Map 5:
Existing Zoning

High Point - Raymond
Neighborhood Development Plan
Amendment
June 2017

City of Madison Planning Division

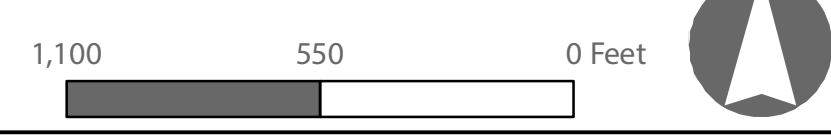
- Planning Area
- Township Boundary

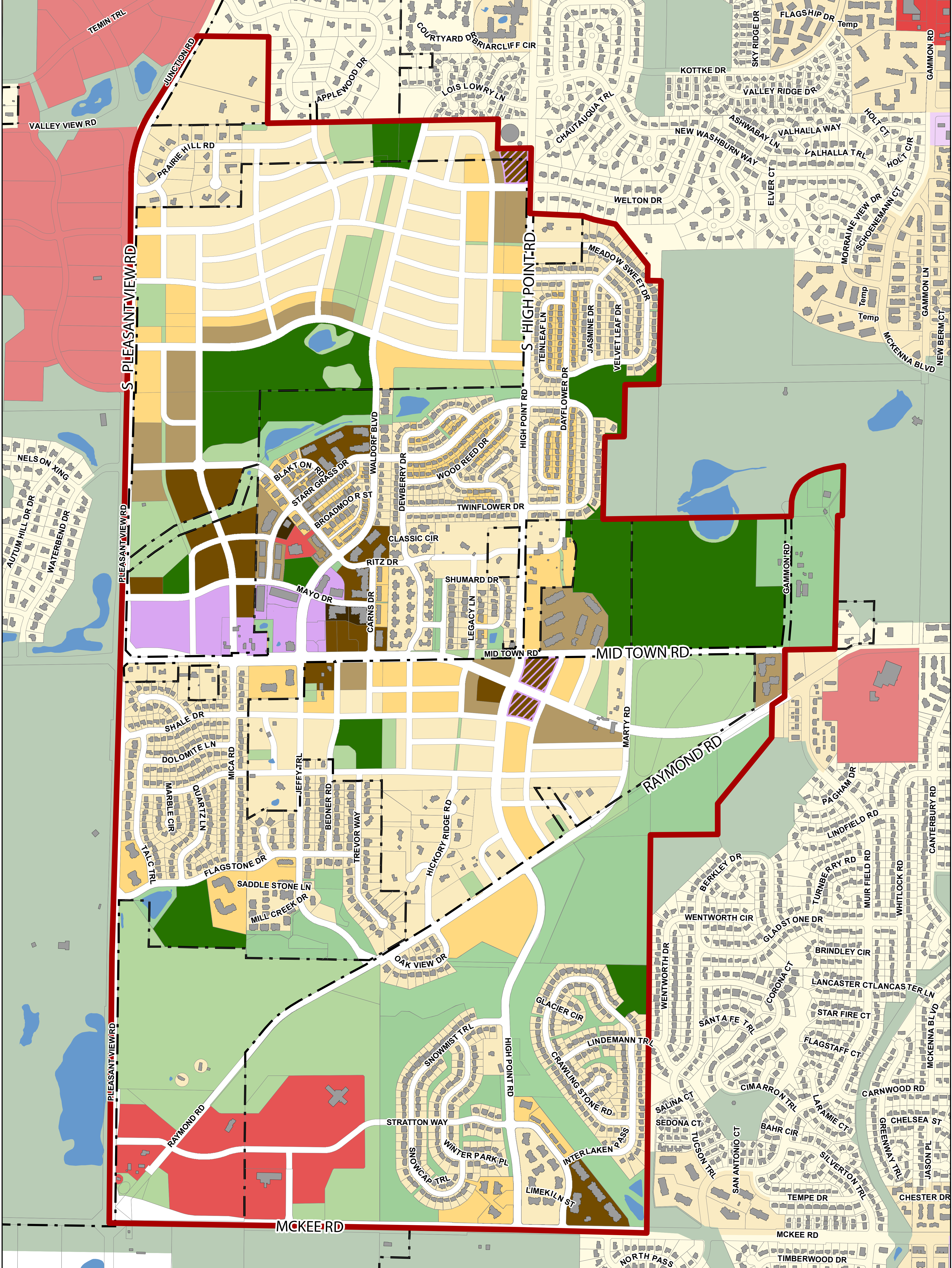
Note: The zoning map was updated June 23, 2017 to correct an error on the outlots of Hawks Creek Wolfe Addition.

- Madison Districts**
- Residential Districts
R-1, R-1A, R-3, R-3A, R-4
 - Commercial Districts
CC, CC-T, NMX
 - Employment Districts
EC, SE
 - Special Districts
A, CN, CI, PD, PR

- Dane County Districts**
- Residential Districts
R-1, R-1A, R-3, R-3A, R-4
 - Rural Homes District
RH-1, RH-2, RH-3, RH-4
 - Commercial Districts
C-2, CO-1

- Recreation District**
RE-1
- Agricultural Districts**
A-1, A-2(1), A-3





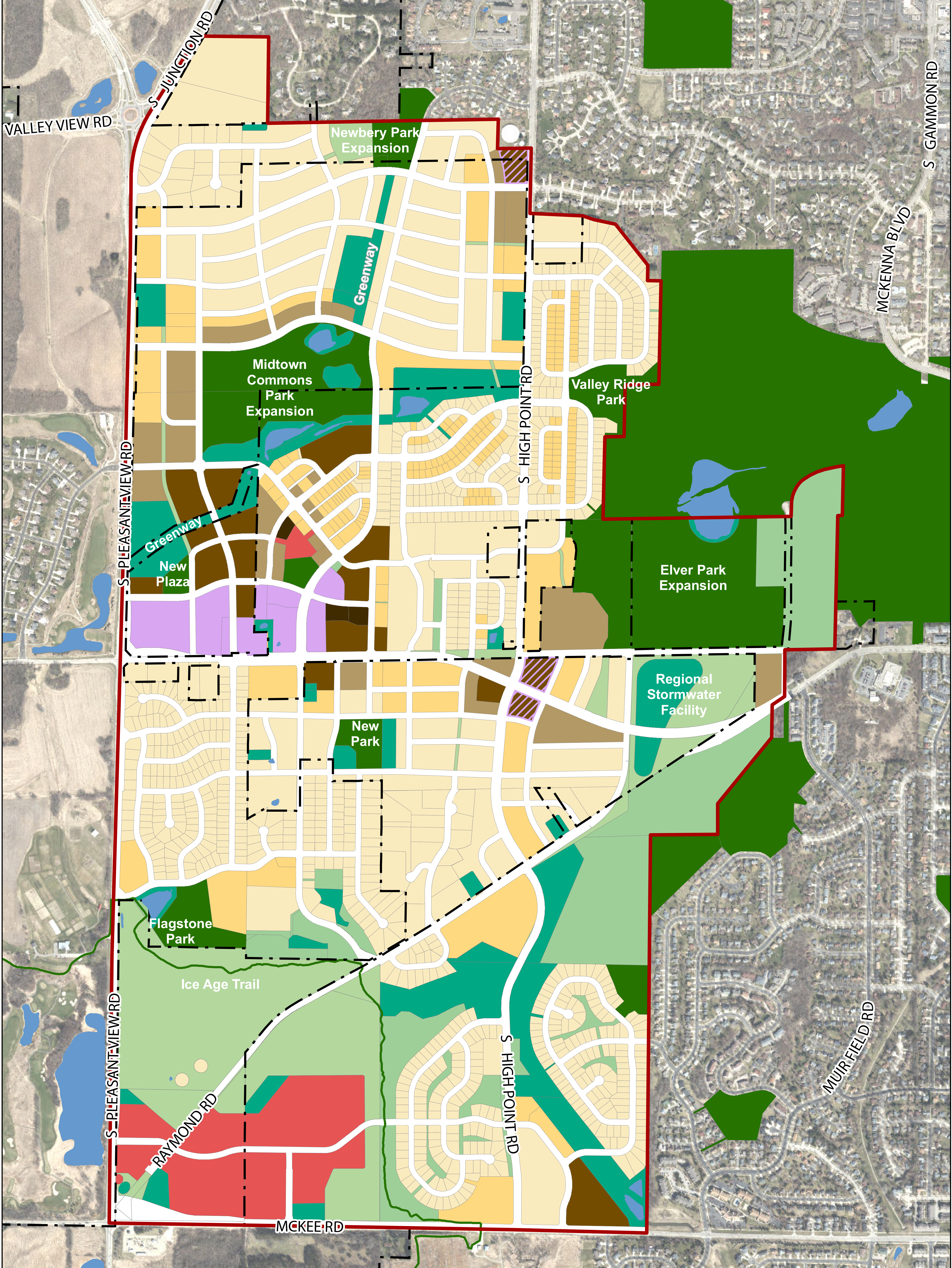
Map 6:
 Future Land Use and
 Street Plan

High Point - Raymond
 Neighborhood Development Plan
 Update
 June 2017

City of Madison Planning Division

High Point-Raymond Planning Area	Residential Housing Mix 1 (Avg 6 du/ac)	Commercial and Mixed Use Neighborhood Mixed Use	Park and Open Spaces Park
City of Madison Boundary	Housing Mix 2 (Avg 12 du/ac)	Potential Mixed Use	Other open space
Existing Building Footprints	Housing Mix 3 (Avg 20 du/ac)	Employment - Office	Right of Way
	Housing Mix 4 (Avg 35 du/ac)		

0 200 400 800 Feet



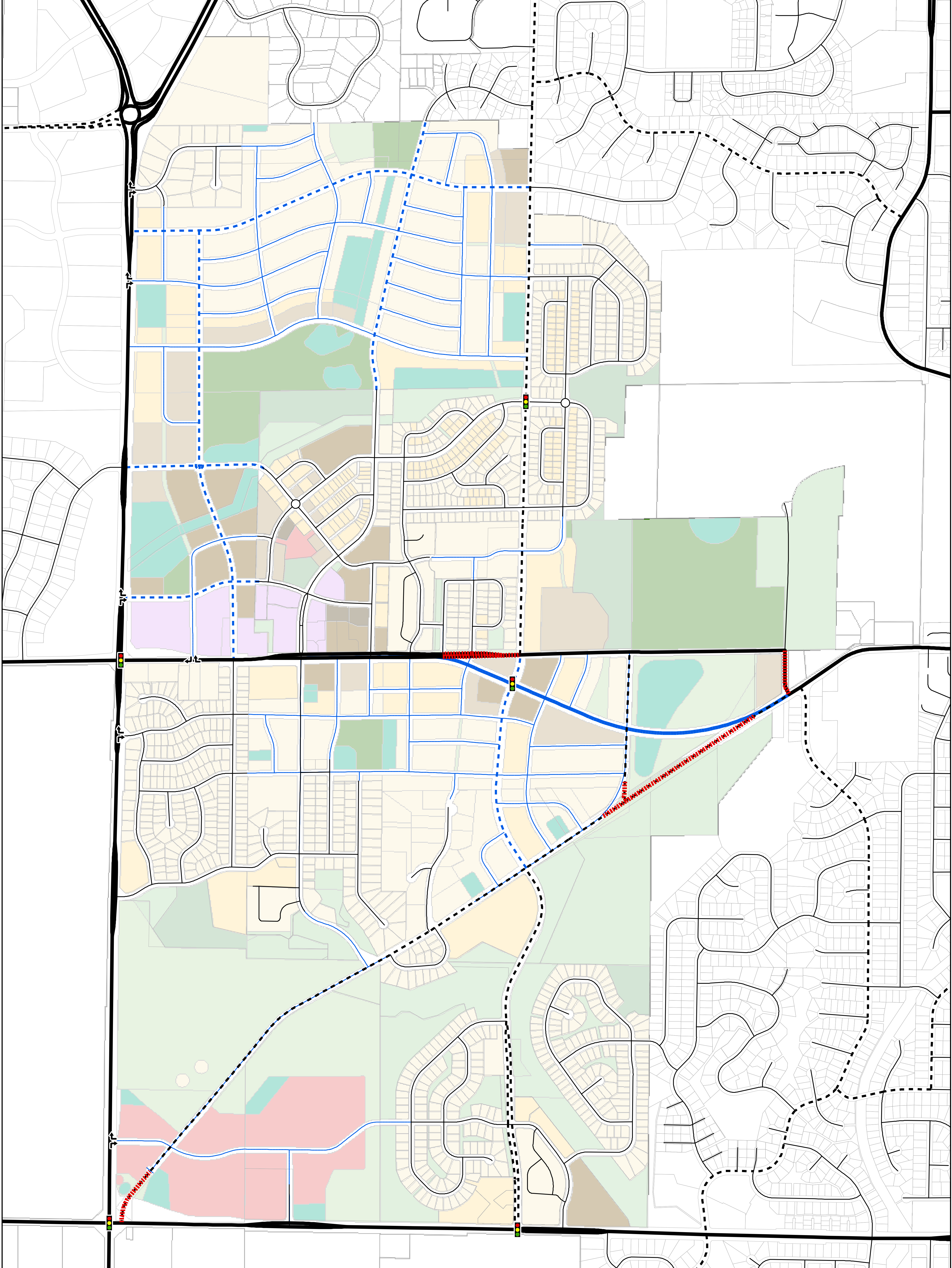
Map 7:
Parks and Open Spaces

High Point - Raymond
Neighborhood Development Plan
Update
June 2017

City of Madison Planning Division

High Point-Raymond Planning Area	Residential	Neighborhood Mixed Use	Park and Open Spaces
City of Madison Boundary	Housing Mix 1 (Avg 6 du/ac)	Potential Mixed Use	Park
	Housing Mix 2 (Avg 12 du/ac)	Employment - Office	Stormwater mgmt
	Housing Mix 3 (Avg 20 du/ac)		Other open space
	Housing Mix 4 (Avg 35 du/ac)		

0 200 400 800 Feet



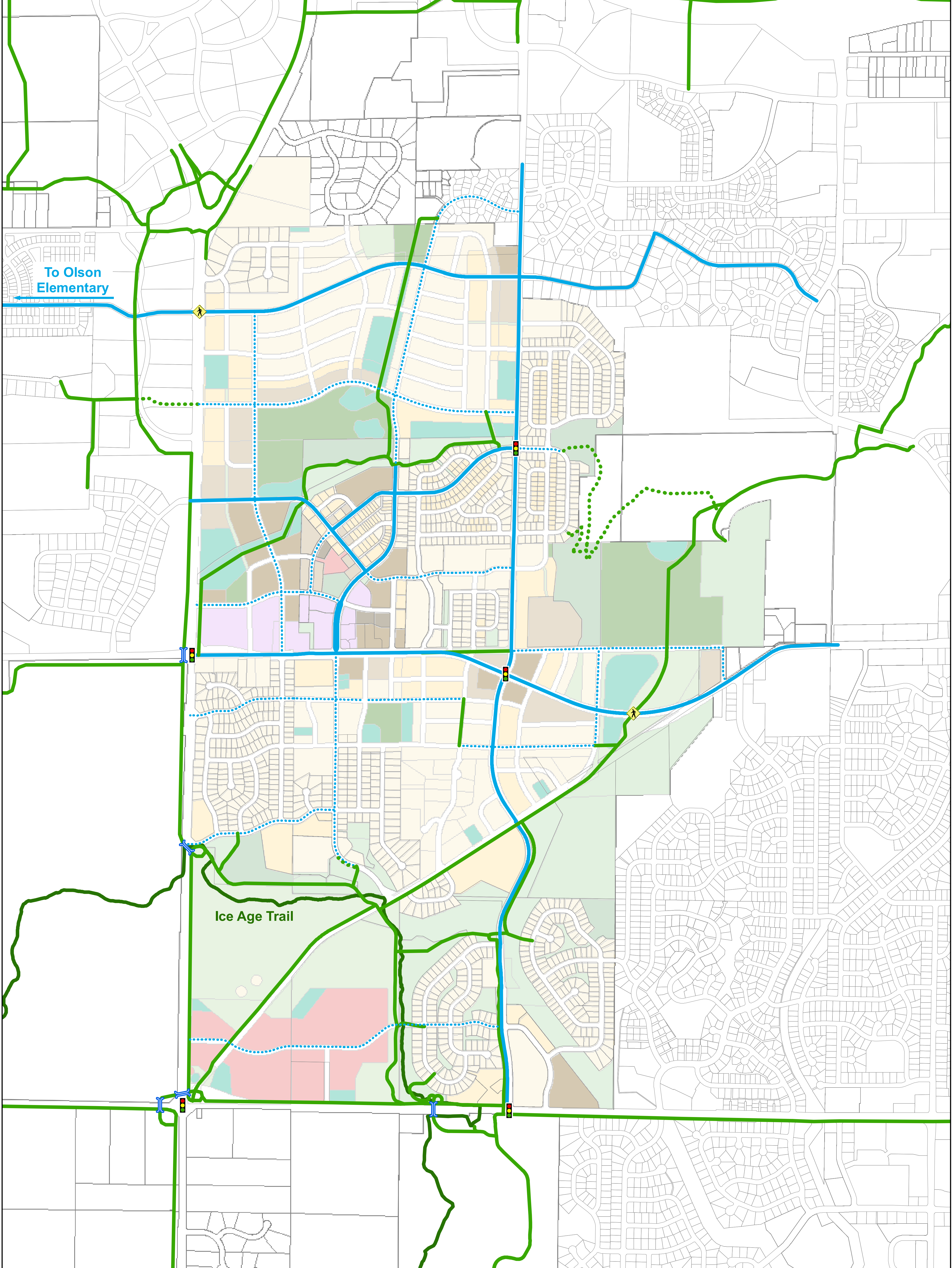
Map 8:
Streets - Existing and Proposed

High Point - Raymond
Neighborhood Development Plan
Update
June 2017

City of Madison Planning Division

Intesection Type (full unless noted)		Existing Street Classification	Proposed Streets
	Signalized	Arterial	Arterial
	Right in, right out	Collector	Collector
		Local	Local
			Vacated Streets

0 200 400 800 Feet



Map 9:
Bike and Pedestrian Facilities

High Point - Raymond
Neighborhood Development Plan
Update
June 2017

City of Madison Planning Division

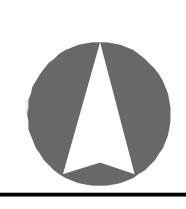
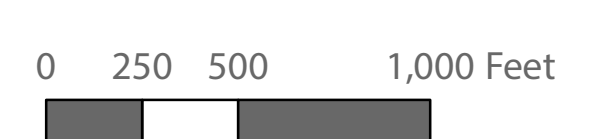
Bike and Pedestrian Network

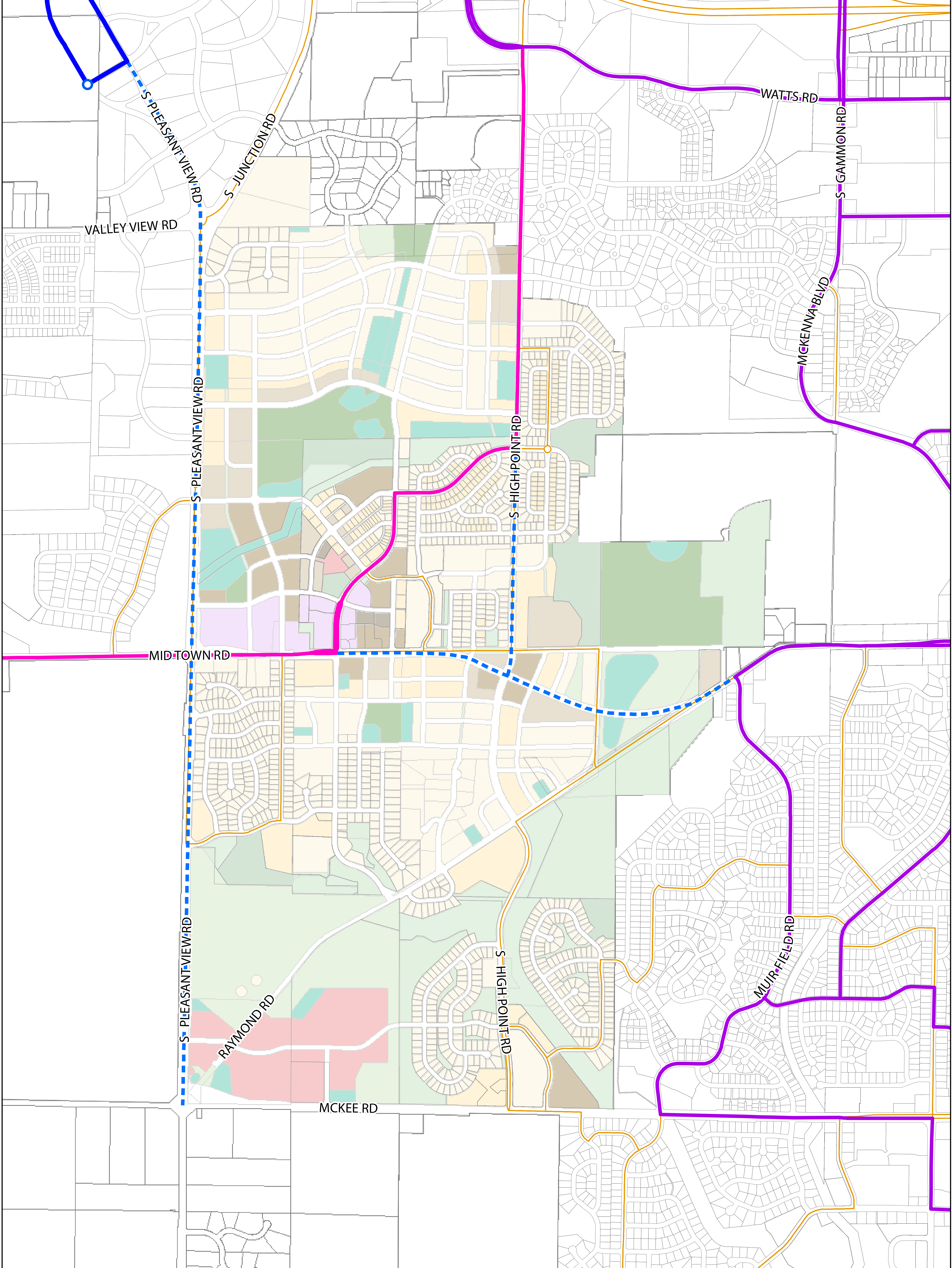
- On Street Route
- Off Street Path
- ⋯ Potential On Street Route
- ⋯ Off Street Path alternative
- Ice Age Trail (Not Paved)

Arterial Crossings

- Signal
- Pedestrian Beacon
- Grade Separated Crossing

Note: Sidewalks will be constructed on all new streets and are not shown in this map





Map 10:
 Future Transit Service

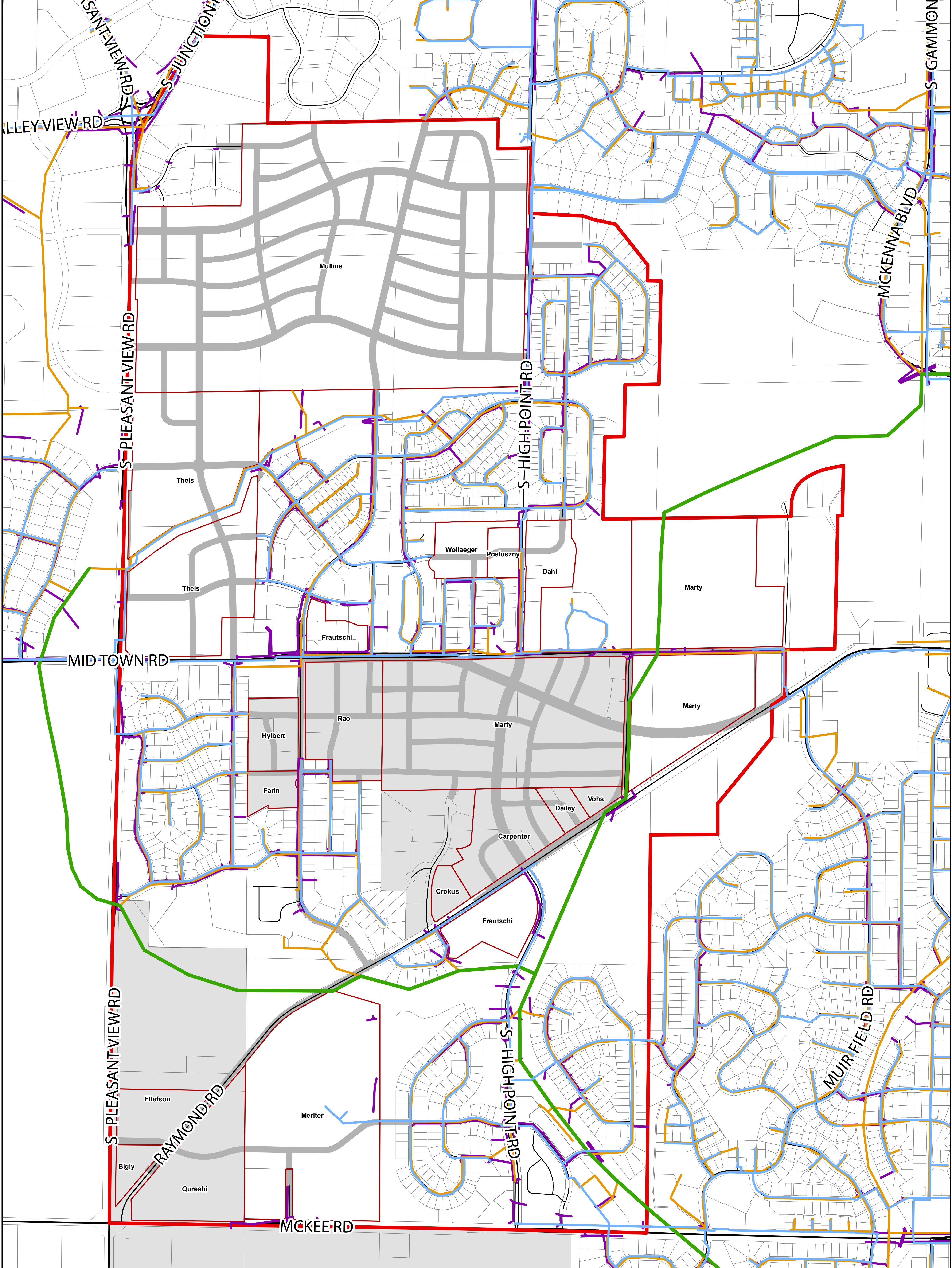
High Point - Raymond
 Neighborhood Development Plan
 Update
 June 2017

City of Madison Planning Division

- Metro Transit Existing Service
- Metro Route 55 Realignment Service to begin in August 2017
- Supplemental (School) Service
- Potential Bus Rapid Transit
- Potential Future Transit

0 250 500 1,000 Feet





Map 11:
 Utilities and Urban
 Service Area

High Point - Raymond
 Neighborhood Development Plan
 Update
 June 2017

City of Madison Planning Division

- Sanitary Sewer Mains
- Water Main
- MMSD Sanitary Sewer
- Stormwater Pipes
- Land not in a Urban Service Area
- Property Ownership Boundaries

