



2026 Parks Division Workplan

January 14, 2026
CJ Ryan, Assistant Parks Superintendent

Principles of Success



Purpose



Celebration



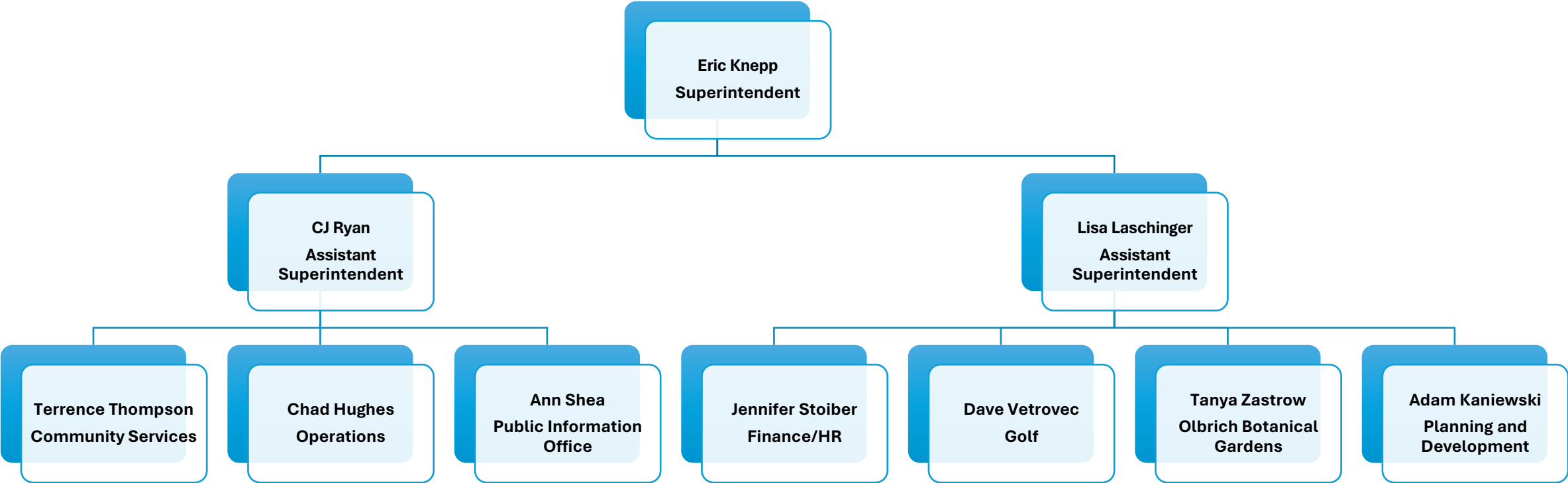
Honesty and
Accountability



Never Finished

Parks Division Management Team

January 2026



For up-to-date staff names, section leaders, contact information, and descriptions of areas of responsibility, please visit the [Government Resource Guide](#).

2025 Accomplishments

- Completed the 2025-2030 POSP
- Procured new Point of Sale system for Golf
- Created Equity Onboarding Video
- Approved new Friends Group Guidelines
- Operationalized Volunteer Management Software
- Adopted Vilas Park Archaeological Approach
- Madison LakeWay Design Development Completed
- Successful Parks Alive 2025
- Began OBG Comp Plan
- Transformed Children's Kitchen Garden
- Improved Training & Travel Process
- Trained all staff on WHS Permitting and Ho-Chunk history
- Completed Living Life as Art Training
- Opened Rennebohm Spray Ground
- Britta Park Beautification

2025 Accomplishments

- Established interim work order system
- Implemented Golf cancellation policy
- Successful 2025 summer programming at The Glen
- Annual volunteer recognition dinner
- Winter programming began at Door Creek Shelter
- Installed SenSource at OBG
- Olbrich Economic Impact Report completed
- Created SOP for native area expansion
- Streamlined Purchasing Procedures
- Installed 20 memorials and tributes in partnership with Madison Parks Foundation
- Tentative award of LWCF grant for Warner Park Southeast Recreation Area
- Tenney Park Beach House opened
- Country Grove Shelter opened
- Capitol Centre Park Ribbon Cutting Celebration
- Re-opening of Thai Pavillion
- Imagination Center Groundbreaking
- Celebrated the Boathouse Anniversary at James Madison Park

2026 Goals

Improve Park
Access for All
Residents

Advance Key
Master Plans

Support the
Growth of Olbrich
Botanical Gardens

Communicate
Parks
Accomplishments
and Opportunities

Improve Data
Collection and
Reporting

Support Employee
and Leadership
Development

Steward the
Existing Park
Infrastructure

Improve Climate
Resilience of the
Park System

Create New
Recreational
Programming
Opportunities

Advance the Golf
Program
Transformation

Improve Park Access for All Residents



- Implement Recommendations from 2025-2030 POSP
- Establish Acquisition Priorities
- Acquire Park Property in Wingra Triangle
- Acquire Park Property in West Towne Area
- Conduct Analysis of Park Needs in Airport Area
- Acquire Park Land to Achieve Ice Age Trail Connection
- Expand Volunteer Software
- Improve Compliance with Document Accessibility

Advance Key Master Plans

- Conduct Geomorphologist Study at Vilas Park
- Implement Vilas Archaeological Approach for Specific Projects
- Support Madison LakeWay Partners Capital Campaign
- Release Bid for Madison LakeWay
- Elver Park Master Plan
- Area Plan Support (Southeast, Southwest, Downtown)

Strategically Grow and Maintain Operations and Facilities at Olbrich Botanical Gardens

- Complete the comprehensive master plan
- Complete the interpretive plan
- Complete a business plan in alignment with comprehensive plan
- Host special celebrations for OBG milestones
- Finalize construction and funding plan for infrastructure needs
- Complete customer service improvement plan
- Update policies and procedures at OBG



Communicate Parks Accomplishments and Opportunities



REVISE PARKS DIVISION
INTERNAL COMMUNICATION
PLAN



CONVERT PARKS WEBSITE TO
DRUPAL



DEVELOP REPORTING
STRUCTURE FOR 2025-2030
POSP

Improve Data Collection and Reporting

Implement Results Madison

Create Efficient Mapping and Data Applications

Conduct Impact Fee Collection Process Improvements

Improve Budget Planning and Projections

Develop a Central Performance Measure Repository

Explore Systems for Counting Park Users

Conduct Annual Data Consultations with Park Sections

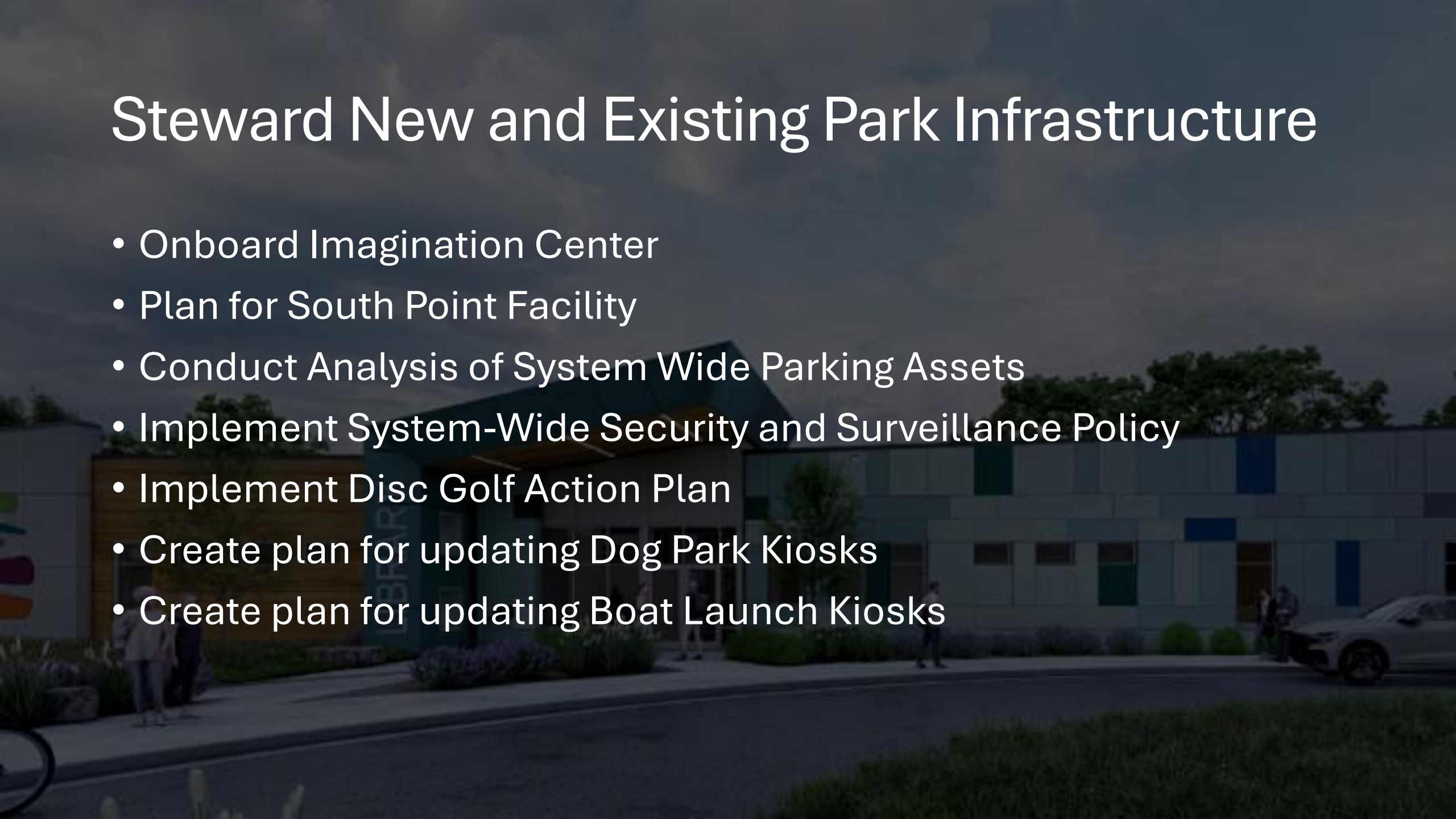
Support Employee and Leadership Development

- PWTN Train the Trainer Program
- TreeKeeper Training and Evolution
- Collaborate with OD to develop customer service training framework for all staff
- Create a response plan based on Team City Survey results
- Support and implement HRM (Human Resources Management)



Steward New and Existing Park Infrastructure

- Onboard Imagination Center
- Plan for South Point Facility
- Conduct Analysis of System Wide Parking Assets
- Implement System-Wide Security and Surveillance Policy
- Implement Disc Golf Action Plan
- Create plan for updating Dog Park Kiosks
- Create plan for updating Boat Launch Kiosks



Improve Park System's Climate Resilience

- Electric Vehicle and Equipment Adoption
- Support Community Science Volunteers
- Create and Implement Woodland Tier System
- Natural Area Management Improvement
- Document Tree Management Plan
- Implement 2026 Beautification Projects
- Data Collection at Conservation Sites



Photo credit: Melissa Enderle

Create New Recreational Programming Opportunities

- Implement the WPCRC Programming Plan
- Implement Door Creek Shelter Program Plan
- Create and Implement South Madison Park Program Plan
- Create Plan for Adult Exercise Equipment
- Determine Plan for Adaptive Equipment in Park System
- Release a Recreation Services RFP
- Year 2 of the Nature Everywhere Seed Grant Funding and Operation Plan
- Create Solicitation for P3 at Northeast Park
- Solicit a Partner for Adaptive Reuse at 305 S. Bedford and McPike Building

Advance the Golf Program Transformation

- Establish Strategic Plan for the Golf Program
- Implement Point of Sale System
- Yahara Hills Golf Course Renovation and Rebranding
- Monona Course Renovations and Rebranding
- Yahara Hills Maintenance Building
- Install Odana Well and Pumphouse
- Plan for Odana Clubhouse and Maintenance Building
- Plan for Odana Course Improvements
- Implement Golf Clubhouse Operational Improvements
- Refine Staffing Model and Secure Staffing Resources for Golf
- Grow and Sustain programming at Golf Courses

