

APPLICATION FOR  
URBAN DESIGN COMMISSION  
REVIEW AND APPROVAL

AGENDA ITEM # \_\_\_\_\_  
Project # 03198

DATE SUBMITTED: <u>6/21</u>	<b>Action Requested</b>
UDC MEETING DATE: <u>6/28</u>	<input type="checkbox"/> Informational Presentation
	<input type="checkbox"/> Initial Approval and/or Recommendation
	<input checked="" type="checkbox"/> Final Approval and/or Recommendation

PROJECT ADDRESS: Mid Town Road & Waldorf Drive  
ALDERMANIC DISTRICT: \_\_\_\_\_

OWNER/DEVELOPER (Partners and/or Principals) ARCHITECT/DESIGNER/OR AGENT:

Dr. David Redinger Josh Johnson  
Dr. John Silbermeyer (The Reuschler Co.)

CONTACT PERSON: Josh Johnson  
Address: 3 Paint Place  
Madison WI 53719  
Phone: 833 2321  
Fax: 833 7964  
E-mail address: Joshj@reuschler.com



TYPE OF PROJECT:  
(See Section A for:)

- Planned Unit Development (PUD)
  - General Development Plan (GDP)
  - Specific Implementation Plan (SIP)
- Planned Community Development (PCD)
  - General Development Plan (GDP)
  - Specific Implementation Plan (SIP)
- Planned Residential Development (PRD)
- New Construction or Exterior Remodeling in an Urban Design District \* (A public hearing is required as well as a fee)
- School, Public Building or Space (Fee may be required)
- New Construction or Addition to or Remodeling of a Retail, Hotel or Motel Building Exceeding 50,000 Sq. Ft.
- Planned Commercial Site

(See Section B for:)

- New Construction or Exterior Remodeling in C4 District (Fee required)

(See Section C for:)

- R.P.S.M. Parking Variance (Fee required)

(See Section D for:)

- Comprehensive Design Review\* (Fee required)
- Street Graphics Variance\* (Fee required)
- Other \_\_\_\_\_

\*Public Hearing Required (Submission Deadline 3 Weeks in Advance of Meeting Date)

Veterinary  
Specialty  
Options, Inc.

Urban Design Submittal

May 31, 2006



Integrating Building Design  
and Construction Services

June 21, 2006

Urban Design Commission  
City of Madison  
215 Martin Luther King Jr. Blvd.  
Madison, WI 53701-2985

Re: Letter of Intent – Veterinary Specialty Options  
Final Approval Application

Applicant/Owner:

Veterinary Specialty Options  
225 West Beltline Highway  
Madison, WI 53713  
Tel: (608) 661-0090

Dr. David Edinger  
Dr. John Silbernagel  
Dr. Bruce Jens

Design Team:

Architecture:

The Renschler Company  
Three Point Place  
Madison, WI 53719-2848  
Tel: (608) 833-2321  
Fax: (608) 833-7964  
[joshj@renschler.com](mailto:joshj@renschler.com)  
[kyled@renschler.com](mailto:kyled@renschler.com)

Josh Johnson, AIA  
Kyle Dumbleton

Civil Engineering:

Calkins Engineering  
5010 Voges Road  
Madison, WI 53718  
Tel: (608) 838-0444 x226  
Fax: (608) 838-0445  
[jsanger@calkinsengineering.com](mailto:jsanger@calkinsengineering.com)

Jason Sanger

Landscape Architecture:

Ziegler Design Associates  
4697 Capital View Road  
Middleton, WI 53562  
Tel: (608) 831-5098  
Fax: (608) 831-9071  
[mlgabler@yahoo.com](mailto:mlgabler@yahoo.com)

Steve Ziegler  
MaraLee Gabler

Development Information:

The proposed project is within Midtown Commons development. Lot 90.

Project Narrative:

Freestanding two story small animal hospital of approximately 23,000 gross square feet and 10,300 net square feet. The facilities functional program consists of reception and administrative space, exam rooms and DVM workstations, diagnostic spaces, treatment and surgery spaces, ICU and recovery cages, office space, short-term animal housing and expansion space for multi-specialty veterinary practice. The specialty practice will have hours of operation between 7:00am and 6:00pm Monday through Friday. The emergency service will be open 2 hours a day, seven days per week. During daytime business hours there will be approximately 25-30 employees and 4-5 employees at other times. Patient volume during daytime business hours is anticipated to be around 25-30 per day and overnight volume will be more variable between 5-20 per day. To accommodate the staff and customer needs, 59 parking spaces are planned.

As part of the project's sustainable and LEED Certification goals, the designs of the four sides of the building uniquely respond to the differing sun and wind patterns presented by the four geographic quadrants. Introduction of natural light to the building's internal spaces, along with careful selection of interior finishes and building systems enhances the quality of the work environment and promotes a sense of healing and wellbeing. The parking spaces are provided as part of a site development that incorporates alternative storm water management techniques such as bio-swales, rain gardens and infiltration basins planted with native plant species.

The project has been planned for the anticipated future needs of a Phase II, which would add a two story structure to the north and west of the proposed building; it would be similar in form and architecture. To accommodate additional parking, a lot will be constructed to the north of the shared access drive.

Narrative by Steven A. Kieckhafer, AIA

Project Schedule:

Planning and design, May – June 2006  
Approval process, June 2006  
Documents, June – July 2006  
Construction, July 2006



# VETERINARY SPECIALTY OPTIONS, INC.



Mid Town Road & Waldorf Drive

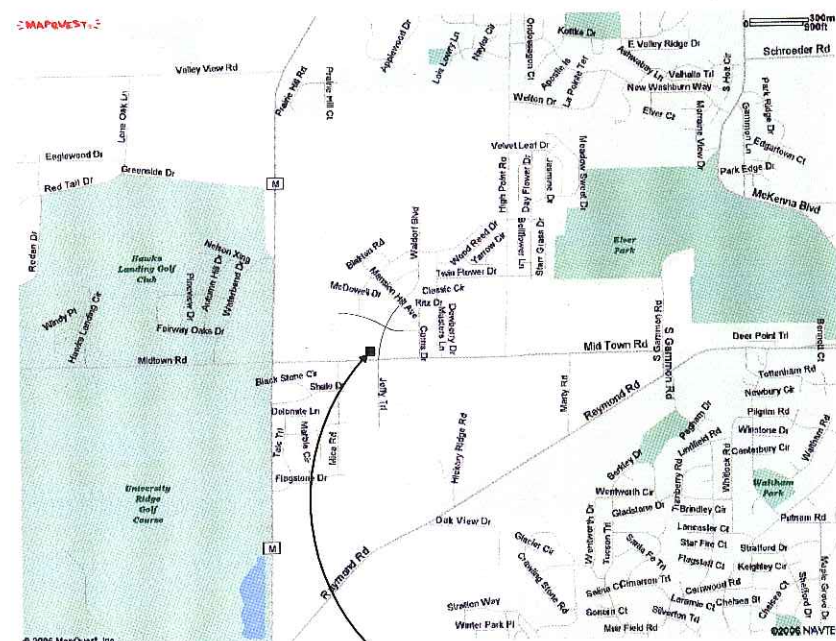
Madison, Wisconsin.

## PROPOSED BUILDING

Project Number: 06-0664



### Project Location Map



Project  
Location

### Drawing Index

- 000 TITLE SHEET
- C1.1 OVERALL SITE MAP
- C1.2 SITE PLAN
- C1.3 GRADING, EROSION CONTROL, AND UTILITY PLAN
- C1.4 SITE LIGHTING PLAN  
LUMINARIES CUT SHEETS
- LS1 LANDSCAPE PLAN  
LANDSCAPE RENDERING  
PLANTING SCHEDULE
- A1.0 BASEMENT FLOOR PLAN
- A1.1 FIRST FLOOR PLAN
- A1.2 SECOND FLOOR PLAN
- A4.0 BUILDING SECTION
- EXTERIOR ELEVATIONS  
SOUTHEAST PERSPECTIVE  
ENTRY PERSPECTIVE  
MONUMENT SIGN

### Project Team

#### Civil Engineer

Calkins Engineering, LLC

Phone: 608-838-0444  
Fax: 608-838-0445

#### Landscape Design

Ziegler Design Associates

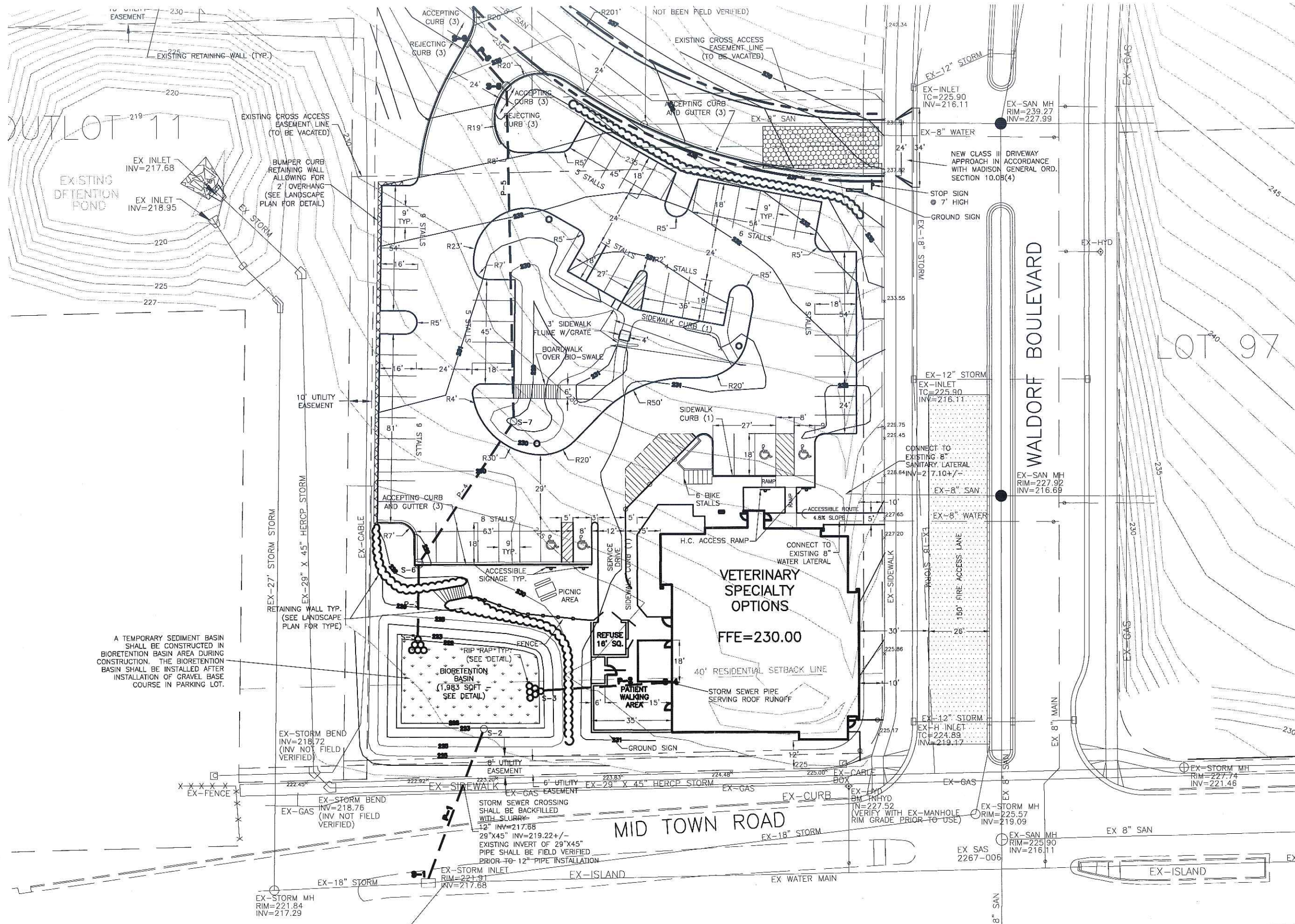
Phone: 608-831-5098  
Fax: 608-831-9071

#### Electrical Engineering

Czarnecki Engineering, Inc.

Phone: 262-691-1010  
Fax: 262-691-7334

G:\shared\jobs 2006\06-0644 Veterinary Specialty Options (New Facility)\Design\Urban Design\Summittal 5 31.06\grading-hudson 5-26-06.dwg, 6/21/2006 10:33:09 AM



Design/Build Construction Services  
Architecture  
Engineering



Three Point Place  
Madison, WI 53719  
608-833-2321  
608-833-7964 Fax  
CONSULTANTS

PROJECT  
**VETERINARY SPECIALTY OPTIONS, INC.**

MADISON, WI.

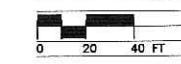
ISSUED  
5-24-06 SCHEMATIC DESIGN  
6-21-06 FINAL URBAN DESIGN REVIEW

REVISED

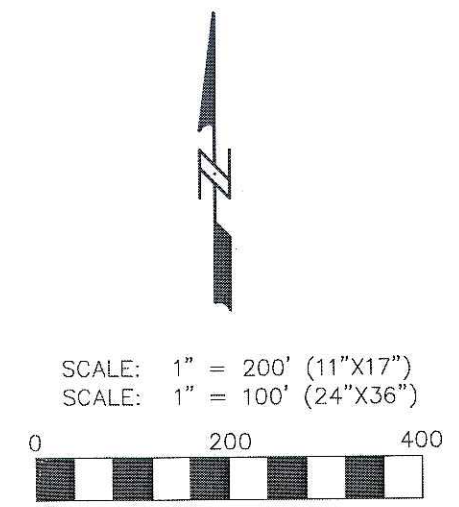
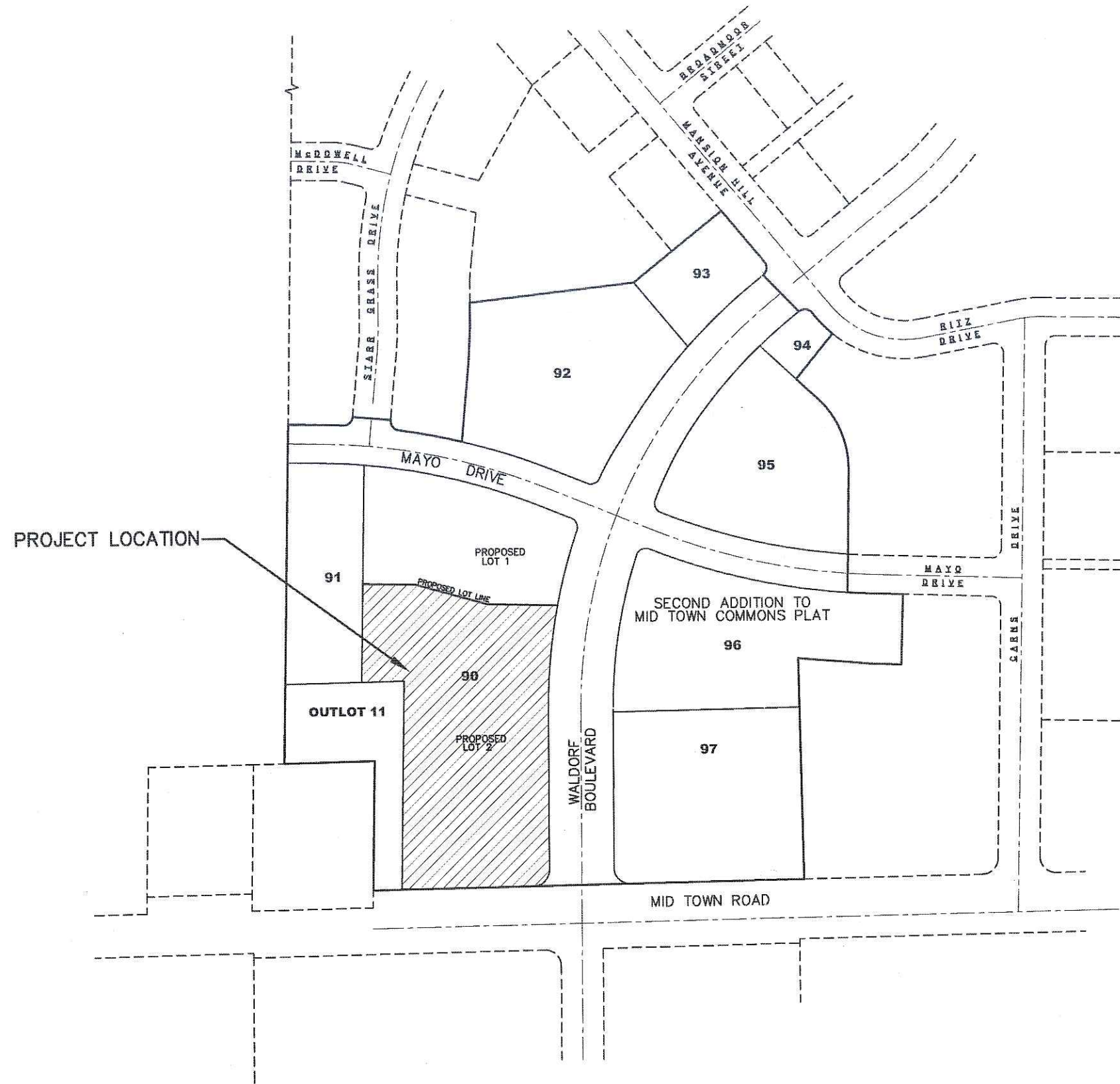
© 2006, THE RENSCHLER COMPANY, INC.

PROJECT NUMBER 60557

**SITE PLAN**



SHEET **C1.2**



DATE: 05-31-06

REVISIONS:


Calkins Engineering, LLC  
 5010 Voces Road  
 Madison, WI 53718  
 (608) 838-0444

VETERINARY SPECIALTY OPTIONS  
 OVERALL SITE MAP

DRAWING NAME : P:\REN01\DESIGN\LOCATIONMAP.DWG

FN: REN01

Calkins Engineering, llc  
 Civil Engineers & Land Surveyors

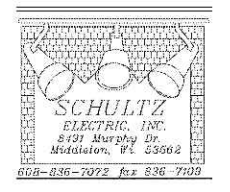
C1.1





Three Third Place  
Madison, WI 53719  
608-839-8321  
608-839-7804 Fax

CONSULTANTS



PROJECT  
**VETERINARY SPECIALTY OPTIONS, INC.**

MADISON, WI.

ISSUED  
5-24-08 SCHEMATIC DESIGN  
8-21-08 SECOND URBAN DESIGN SUBMITTAL

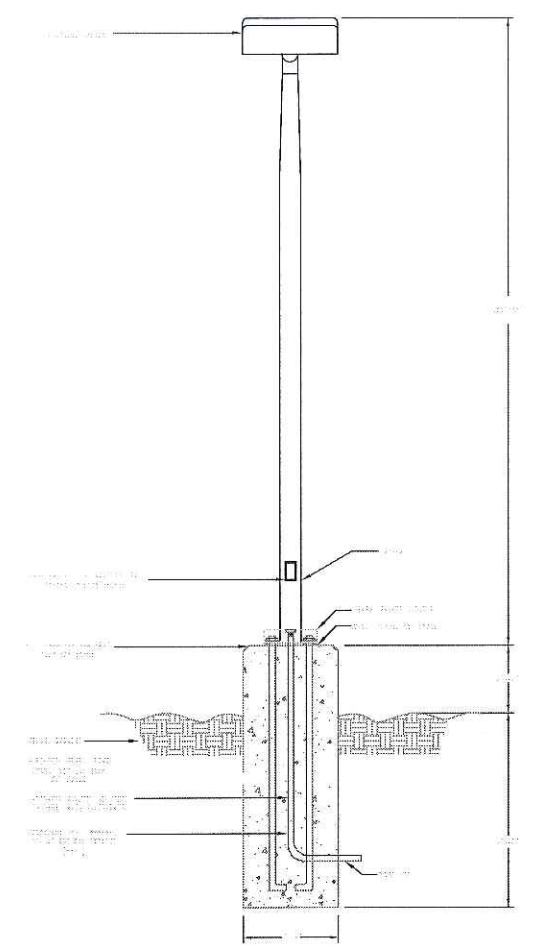
REVISED

© 2008, THE RENSCHLER COMPANY, INC.

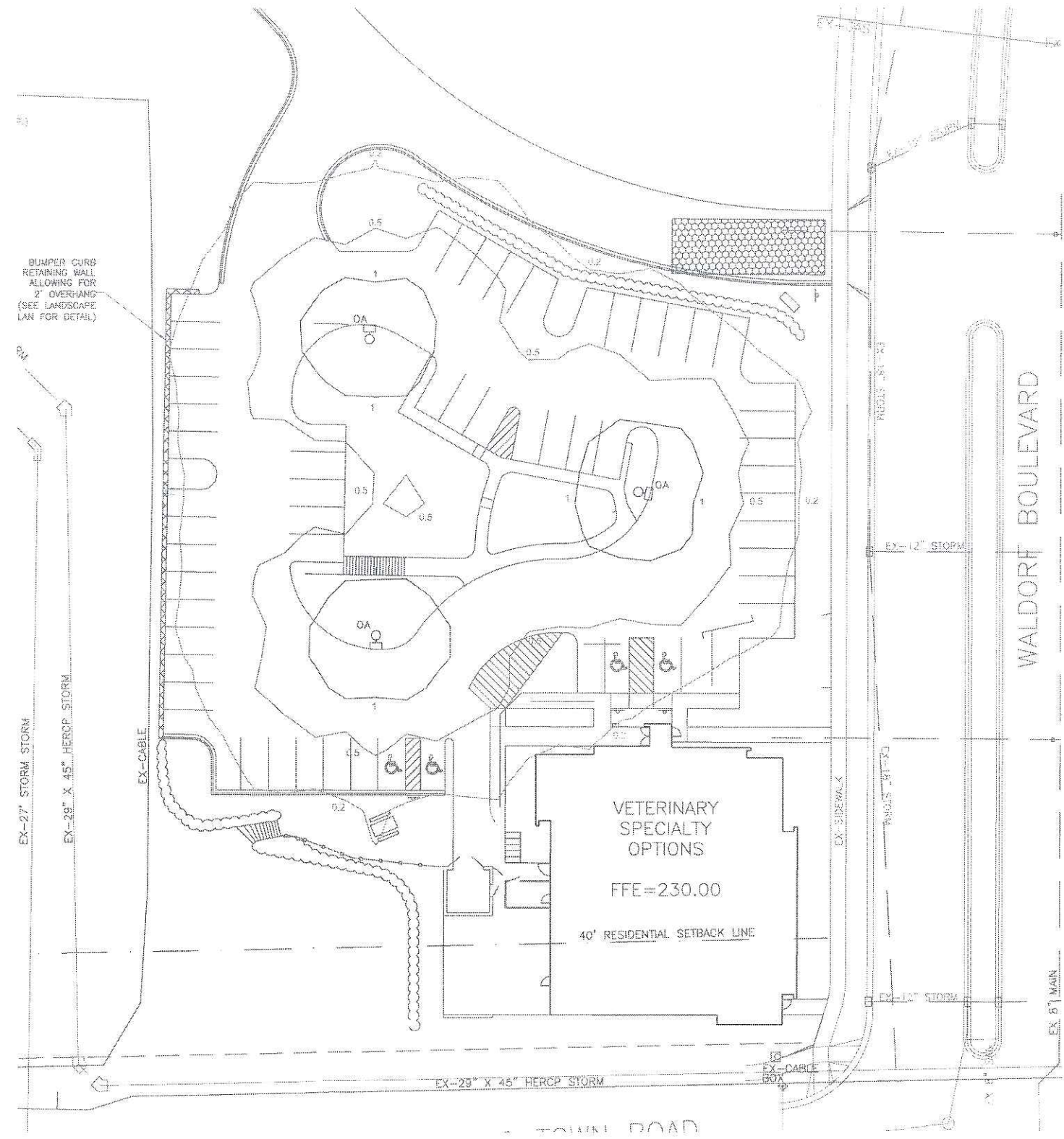
PROJECT NUMBER 60657

**SITE LIGHTING PLAN**

**C1.4**



2 POLE BASE DETAIL  
SCALE: NA



1 ELECTRICAL SITE LIGHTING PLAN  
SCALE: 1"=20'



LIGHTING FIXTURE SCHEDULE														
TYPE	LIGHTING FIXTURE				MOUNTING	CEILING TYPE	LENS	VOLT	LAMP DATA					NOTES
	DESCRIPTION	MANUFACTURER	CATALOG NO.						NO.	WATT	TYPE	MANUFACTURER	CATALOG NO.	
OA	SINGLE HEAD PARKING LOT FIXTURE	LITHONIA	KSP2-175M-R55-208-SF04-LPI	POLE	NA	GLASS	208V	1	175W	MH	NA	NA	LAMP INCLUDED WITH FIXTURE	

Catalog Number	
<b>KSF2-175M-R5S-208-SP04-LPI</b>	
Notes	Type
	<b>OA</b>

**FEATURES & SPECIFICATIONS**

**INTENDED USE**

Ideal for use in car lots, street lighting or parking areas.

**CONSTRUCTION**

Rugged, .063" thick, aluminum rectilinear housing. Continuously seam welded for weather-tight seal and integrity.

Naturally anodized, extruded, aluminum door frame with mitered corners is retained with (two) .188" diameter hinge pins and secured with (one) quarter-turn, quick release fastener. Weatherproof seal between housing and door frame is accomplished with an integrally designed, extruded silicone gasket that snaps into door frame.

**FINISH**

Standard finish is dark bronze (DDB) polyester powder. Other powder architectural colors available.

**OPTICAL SYSTEM**

Reflectors are anodized and segmented for superior uniformity and control, which allows the flexibility to mix distributions without compromising the overall lighting job. Reflectors attach with tool-less fasteners and are rotatable and interchangeable. Five cutoff distributions available: Type II (roadway), Type III (asymmetric), Type IV (forward throw, sharp cutoff), Type IV (wide, forward throw), and Type V (square symmetrical). Lens is .125" thick, impact-resistant, tempered, glass with thermally applied, silk screened power door shield.

**ELECTRICAL SYSTEM**

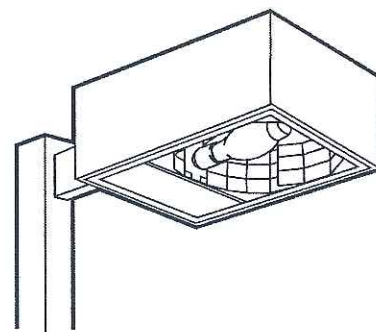
Constant-wattage autotransformer is 100% copper-wound and factory tested. Super CWA Pulse Start ballast required for 320W and 350W (must order SCWA option). Removable power door and positive-locking disconnect plug. Porcelain, horizontally-oriented, mogul-base socket with copper alloy, nickel plated screw shell and center contact. UL listed 1500W- 600V.

**INSTALLATION**

Extruded, 4" aluminum arm for pole or wall mounting is shipped in fixture carton. Optional mountings available.

**LISTING**

UL Listed to US and Canadian safety standards (see Options). IP65 rated.

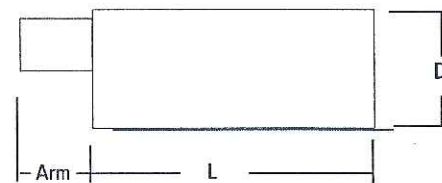


**Area Lighting**

**KSF2**

**METAL HALIDE**

320W, 350W, 400W  
15' to 25' Mounting



**Specifications**

EPA: 2.0 ft.<sup>2</sup> (.28m<sup>2</sup>)  
(includes arm)

Length: 24-19/32 (62.5)

Width: 17-25/32 (45.2)

Depth: 8-5/16 (21.1)

Weight: 52 lbs (23.6kg)

Arm: 4 (10.2)

All dimensions are inches (centimeters) unless otherwise specified.

Mounting Option	Drilling Template <sup>7</sup>
SPxx, RPxx, DA12P	5
WBxx, DA12WB	6
WWxx	7

**ORDERING INFORMATION**

Example: **KSF2 400M R3 120 SP04 SF DDB LPI**

Choose the boldface catalog nomenclature that best suits your needs and write it on the appropriate line. Order accessories as separate catalog number.

KSF2	175M	R5S	208	SP04	LPI
Series	Wattage	Voltage	Mounting <sup>7</sup>	Options	
KSF2	250M 320M 350M 400M <sup>1</sup>	120 208 <sup>2</sup> 240 <sup>2</sup> 277 347 480 <sup>2</sup> TB <sup>3</sup>	SP04 Square pole (4" arm) (standard) <sup>4</sup> SP09 Square pole (9" arm) RP04 Round pole (4" arm) <sup>4</sup> RP09 Round pole (9" arm) WW04 Wood pole or wall (4" arm) <sup>4</sup> WW09 Wood pole or wall (9" arm) WB04 Wall bracket (4" arm) WB09 Wall bracket (9" arm) L/ARM When ordering KMA, DA12 <u>Optional mounting</u> (shipped separately) DA12P Degree arm (pole) DA12WB Degree arm (wall) KMA Mast arm adapter KTMB Twin mounting bar	<p><u>Shipped installed in fixture</u></p> <p>SF Single fuse (120, 277, 347V, n/a TB) DF Double fuse (208, 240, 480V, n/a TB) LPI Lamp included as standard L/LP Less lamp PER NEMA twist-lock receptacle only (no photocontrol) QRS Quartz restrike system (75W max; lamp not included, 120V only) EC Emergency circuit CR Corrosion-resistant finish CSA Listed and labeled to comply with Canadian Standards SCWA Super CWA Pulse Start Ballast</p> <p><u>Shipped separately<sup>5</sup></u></p> <p>PE1 NEMA twist-lock PE (120, 208, 240V) PE3 NEMA twist-lock PE (347V) PE4 NEMA twist-lock PE (480V) PE7 NEMA twist-lock PE (277V) SC Shorting cap for PER option KSF2HS House side shield (R2,R3) KSF2VG Vandal guard</p>	<p><u>Architectural colors</u> (powder finish)<sup>6</sup></p> <p><u>Standard colors</u></p> <p>DOB Dark bronze (standard) DWH White DBL Black</p> <p><u>Classic colors</u></p> <p>DMB Medium bronze DNA Natural aluminum DSS Sandstone DGC Charcoal gray DTG Tennis green DBR Bright red DSB Steel blue</p>
	<b>Distribution</b>				
	R2 IES Type II roadway R3 IES Type III asymmetric R4SC IES Type IV forward throw, sharp cutoff R4W IES Type IV wide, forward throw R5S IES Type V square				

NOTES:  
1 Use ED28 reduced jacket lamp.  
2 Consult factory for availability in Canada.  
3 Optional multi-tap ballast (120, 208, 240, 277V) (120, 277, 347V in Canada).  
4 SP09, RP09, or WW09 must be used when two or more luminaires are oriented on a 90° drilling pattern.  
5 May be ordered as accessory.  
6 Additional architectural colors available; see Architectural Colors brochure, Form No. 794.3.  
7 Refer to technical data section in Outdoor binder for drilling template.

**Accessories: Tenon Mounting Slipfitter (Order separately)**

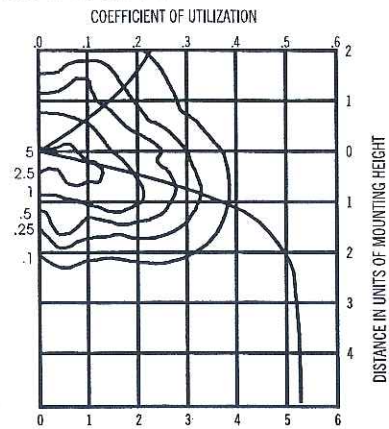
Number of fixtures

Tenon O.D.	One	Two@180°	Two@90° <sup>3</sup>	Three@120°	Three@90° <sup>3</sup>	Four@90° <sup>3</sup>
2-3/8"	T20-190	T20-280	T20-290	T20-320	T20-390	T20-490
2-7/8"	T25-190	T25-280	T25-290	T25-320	T25-390	T25-490
4"	T35-190	T35-280	T35-290	T35-320	T35-390	T35-490

# KSF2 400M Arm-Mounted Rectilinear Cutoff Lighting

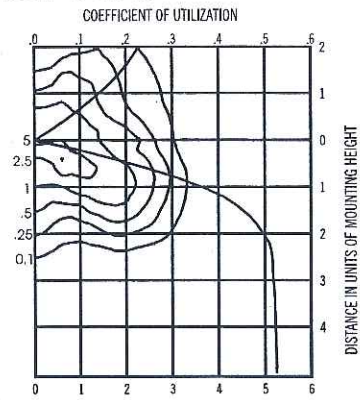
Coefficient of Utilization \_\_\_\_\_  
Initial Footcandles \_\_\_\_\_

**KSF2 400M R2** Test No. 1193031801



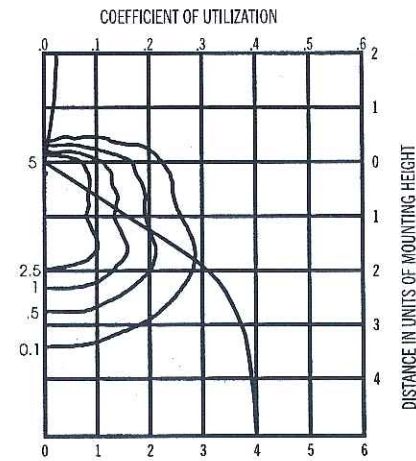
400W Metal Halide lamp, 32000 rated lumens. Footcandle values based on 35' mounting height, Distribution II, cutoff.

**KSF2 400M R3** Test No. TEST NO. 1194100501



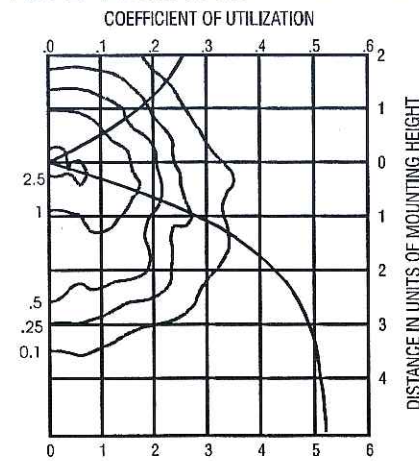
400W Metal Halide lamp, 32000 rated lumens. Footcandle values based on 35' mounting height, Distribution III, cutoff.

**KSF2 400M R4SC** Test No. 1193041301



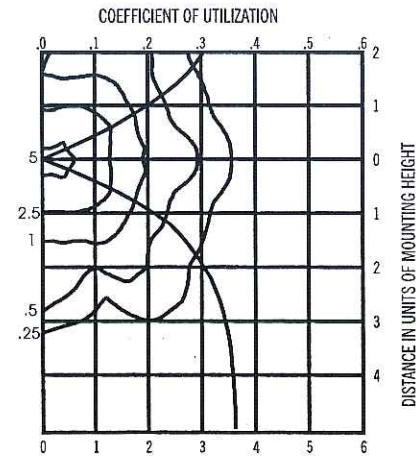
400W Metal Halide lamp, 32000 rated lumens. Footcandle values based on 35' mounting height, Distribution IV, sharp cutoff.

**KSF2 400M R4W** Test No. LTL8509



400W Metal Halide lamp, rated lumens. Footcandle values based on 35' mounting height, Distribution wide, forward throw.

**KSF2 400M R5S** Test No. 1193051801



400W Metal Halide lamp, 32000 rated lumens. Footcandle values based on 35' mounting height, Distribution V, cutoff.

**NOTES:**

- 1 For electrical characteristics, consult technical data tab.
- 2 Tested to current IES and NEMA standards under stabilized laboratory conditions. Various operating factors can cause differences between laboratory and actual field measurements. Dimensions and specifications are based on the most current available data and are subject to change.
- 3 Photometric data for other distributions can be accessed from [www.lithonia.com](http://www.lithonia.com).

**Mounting Height Correction Factor**

(Multiply the fc level by the correction factor)

- 15 ft.= 5.4
- 30 ft.= 1.36
- 40 ft.= .77

$$\left( \frac{\text{Existing Mounting Height}}{\text{New Mounting Height}} \right)^2 = \text{Correction factor}$$



An Acuity Brands Company

**Lithonia Lighting**

Outdoor Lighting  
One Lithonia Way, Conyers, GA 30012-3957  
Phone: 770-922-9000 Fax: 770-918-1209  
[www.lithonia.com](http://www.lithonia.com)

**Planting Schedule for Veterinary Specialty Options**  
As per Landscape Plan 5-13-06  
Ziegler Design Associates

Deciduous Trees	
SY	1 Corylus americana, 2' cal. B&B
Am	2 Acer rubrum, 2' cal. B&B
Ba	2 Liquidambar styraciflua, 2' cal. B&B
Ca	2 Cornus canadensis, 2' cal. B&B
Co	2 Cornus alternifolia, 2' cal. B&B
Co	2 Cornus rugosa, 2' cal. B&B
Cr	2 Crataegus cuneata, 2' cal. B&B
Fr	2 Fraxinus americana, 2' cal. B&B
Gy	2 Gymnocladia dioica, 2' cal. B&B
Ma	2 Malus sp., 2' cal. B&B
Os	2 Ostrya virginiana, 2' cal. B&B
Pa	2 Prunus americana, 2' cal. B&B
Pa	2 Prunus pennsylvanica, 2' cal. B&B
Ro	2 Rhus glabra, 2' cal. B&B
St	2 Sycamore, 2' cal. B&B
Sw	2 Swamp White Oak, 2' cal. B&B
Sum	2 Sumac, 2' cal. B&B
Ua	2 Ulmus americana, 2' cal. B&B
La	2 Larix laricina, 2' cal. B&B
Pl	2 Pinus strobus, 2' cal. B&B
Pa	2 Pinus strobus, 2' cal. B&B

Deciduous Shrubs	
Sp	1 Spirea, 2' cal. B&B
Co	1 Cornus americana, 2' cal. B&B
Co	1 Cornus rugosa, 2' cal. B&B
Co	1 Cornus canadensis, 2' cal. B&B
Co	1 Cornus alternifolia, 2' cal. B&B
Co	1 Cornus rugosa, 2' cal. B&B
Cr	1 Crataegus cuneata, 2' cal. B&B
Fr	1 Fraxinus americana, 2' cal. B&B
Gy	1 Gymnocladia dioica, 2' cal. B&B
Ma	1 Malus sp., 2' cal. B&B
Os	1 Ostrya virginiana, 2' cal. B&B
Pa	1 Prunus americana, 2' cal. B&B
Pa	1 Prunus pennsylvanica, 2' cal. B&B
Ro	1 Rhus glabra, 2' cal. B&B
St	1 Sycamore, 2' cal. B&B
Sw	1 Swamp White Oak, 2' cal. B&B
Sum	1 Sumac, 2' cal. B&B
Ua	1 Ulmus americana, 2' cal. B&B
La	1 Larix laricina, 2' cal. B&B
Pl	1 Pinus strobus, 2' cal. B&B
Pa	1 Pinus strobus, 2' cal. B&B

Evergreen Trees	
Ab	1 Abies balsamea, 2' cal. B&B
Lu	1 Liquidambar styraciflua, 2' cal. B&B
La	1 Larix laricina, 2' cal. B&B
Pl	1 Pinus strobus, 2' cal. B&B
Pa	1 Pinus strobus, 2' cal. B&B

Evergreen Shrubs	
Sp	1 Spirea, 2' cal. B&B
Co	1 Cornus americana, 2' cal. B&B
Co	1 Cornus rugosa, 2' cal. B&B
Co	1 Cornus canadensis, 2' cal. B&B
Co	1 Cornus alternifolia, 2' cal. B&B
Co	1 Cornus rugosa, 2' cal. B&B
Cr	1 Crataegus cuneata, 2' cal. B&B
Fr	1 Fraxinus americana, 2' cal. B&B
Gy	1 Gymnocladia dioica, 2' cal. B&B
Ma	1 Malus sp., 2' cal. B&B
Os	1 Ostrya virginiana, 2' cal. B&B
Pa	1 Prunus americana, 2' cal. B&B
Pa	1 Prunus pennsylvanica, 2' cal. B&B
Ro	1 Rhus glabra, 2' cal. B&B
St	1 Sycamore, 2' cal. B&B
Sw	1 Swamp White Oak, 2' cal. B&B
Sum	1 Sumac, 2' cal. B&B
Ua	1 Ulmus americana, 2' cal. B&B
La	1 Larix laricina, 2' cal. B&B
Pl	1 Pinus strobus, 2' cal. B&B
Pa	1 Pinus strobus, 2' cal. B&B

**Landscape Worksheet and Plant Points**  
As per Landscape Plan 5-13-06  
Ziegler Design Associates

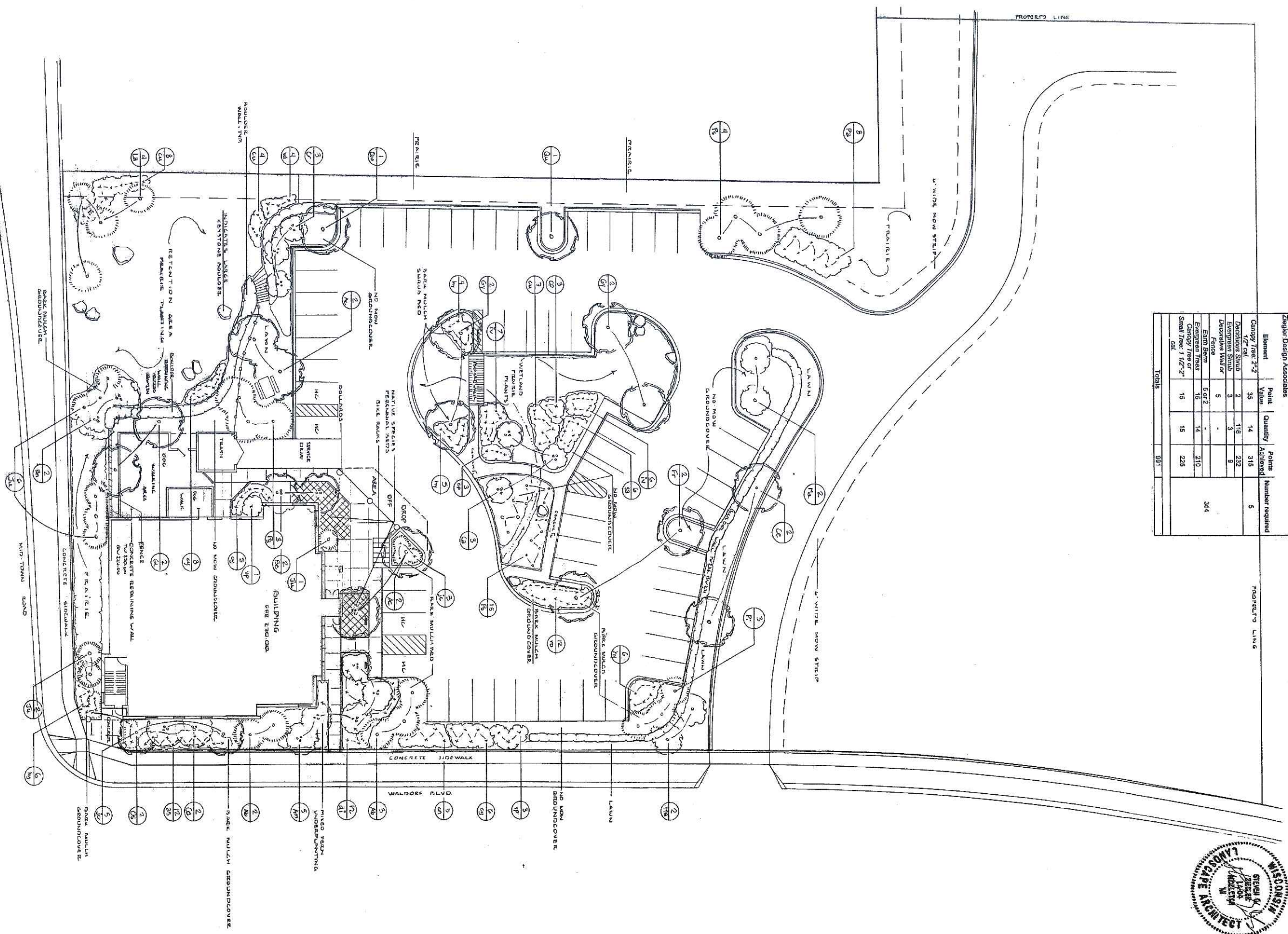
Element	Plant Value	Quantity	Points Achieved	Number required
Canopy Tree 2'-2'	35	14	315	5
Deciduous Shrub	2	116	232	
Evergreen Shrub	3	3	9	
Decorative Wall or Fence	5	-	-	
Evergreen Tree 5'-6'	50	2	100	
Evergreen Tree 6'-8'	16	16	256	
Small Tree 1'-2'-2'-2'	15	15	225	
<b>TOTALS</b>			<b>991</b>	

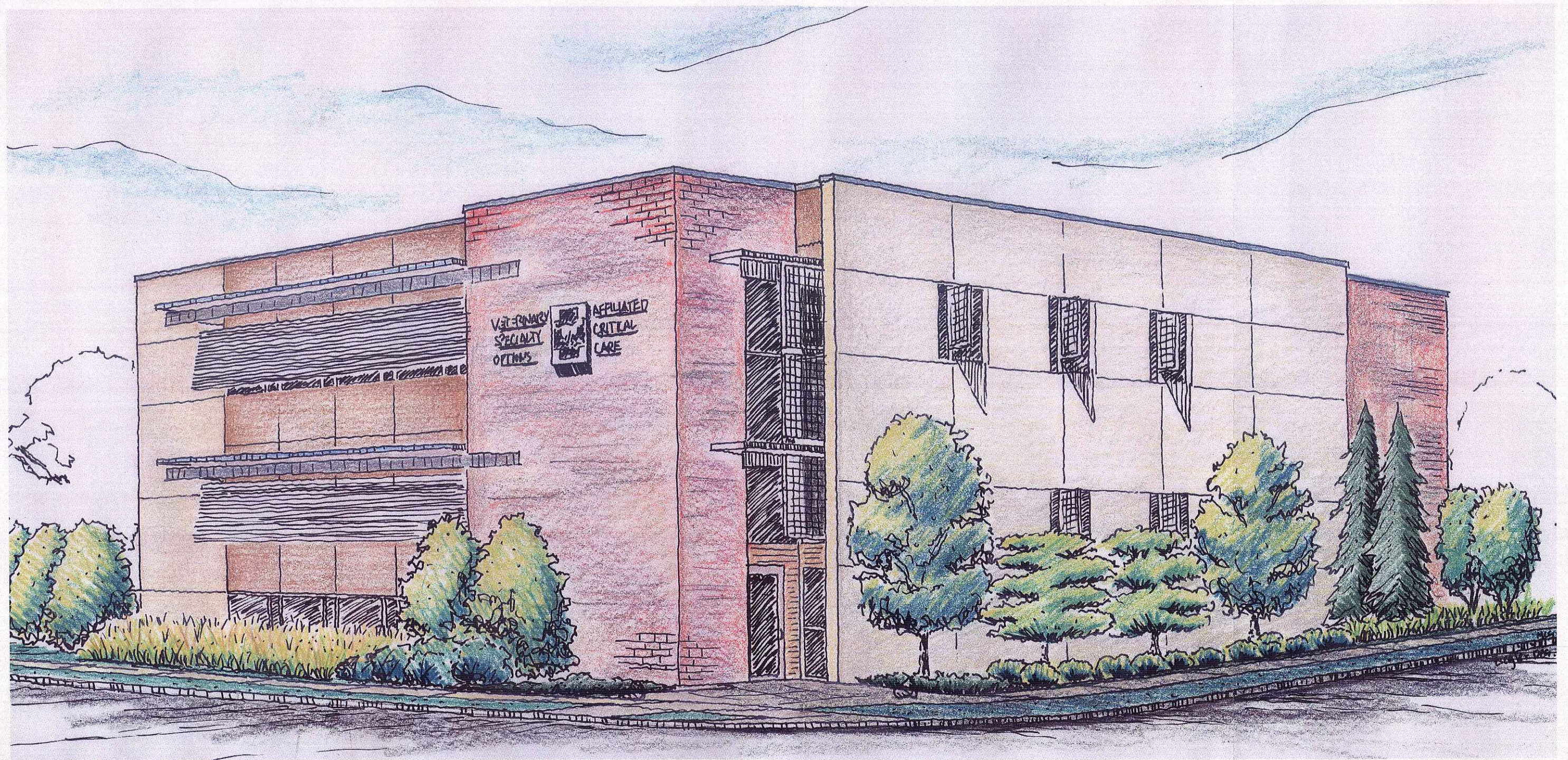
**VETERINARY SPECIALTY OPTIONS**  
Landscape Planning Plan  
Madison Road and Waldorf Blvd., Madison, WI

**ZIEGLER DESIGN ASSOCIATES**  
4897 Capital View Road  
Madison, WI 53762  
608.831.5098  
Drawn by: SZZ/M/G/EP 5-31-08  
5:55 P.M. 5-31-08

Drawing Scale: 1" = 20'-0"

**LS 1**





LANDSCAPE RENDERING

**Planting Schedule for Veterinary Specialty Options**

As per Landscape Plan 5-31-06

Ziegler Design Associates

**Deciduous Trees**

Sym. Qty.	Name, size, root condition
Ac 4	<i>Acer saccharum</i> , Sugar Maple, 2" caliper, B&B
Am 5	<i>Amelanchier laevis</i> , Allegheny Serviceberry, 6' Cl., B&B
Be 4	<i>Betula papyrifera</i> , White Birch, 6-8' Cl., B&B
Ca 3	<i>Carpinus caroliniana</i> , American Hornbeam, 5' Cl., B&B
Ce 2	<i>Celtis occidentalis</i> , Hackberry, 2" cal, B&B
Cr 3	<i>Crataegus crus-galli</i> , Cockspur Hawthorn, 5' Cl., B&B
Fr 2	<i>Fraxinus americana</i> , White Ash, 2" cal, B&B
Gl 2	<i>Gleditsia triacanthos</i> , Honeylocust, 2" cal, B&B
Gy 4	<i>Gymnocladus dioica</i> , Kentucky Coffeetree, 2" cal, B&B
Ma 4	<i>Malus sp.</i> , 'loensis' Prairie Crabapple, 2" cal, B&B
Os 2	<i>Ostrya virginiana</i> , Ironwood, 1 1/4" cal, B&B
Pa 8	<i>Prunus americana</i> , American Plum, 5', CONT
Po 15	<i>Populus tremuloides</i> , Quaking Aspen, 6', B&B
Qu 2	<i>Quercus bicolor</i> , Swamp White Oak, 2" cal, B&B

**Evergreen Trees**

Sym. Qty.	Name, size, root condition
Ab 5	<i>Abies balsamea</i> , Balsam Fir, 5', B&B
Ju 7	<i>Juniperus virginiana</i> , Eastern Red Cedar, 4', B&B
La 4	<i>Larix laricina</i> , American Larch, 6', B&B
Pi 3	<i>Picea glauca</i> , White Spruce, 5', B&B
Pr 2	<i>Pinus resinosa</i> , Red Pine, 5', B&B
Ps 7	<i>Pinus strobus</i> , White Pine, 5', B&B

**Deciduous Shrubs**

Sym. Qty.	Name, size, root condition
cp 6	<i>Cephalanthus occidentalis</i> , Buttonbush, 24", POT
cn 11	<i>Cornus racemosa</i> , Grey Dogwood, 24", POT
cu 19	<i>Cornus sericea</i> , Red Dogwood, 24", POT
cy 23	<i>Corylus americana</i> , Hazelnut, 24", CONT
di 12	<i>Diervilla lonicera</i> , Dwf. Bush Honeysuckle, 15-18", POT
eu 6	<i>Euonymus atropurpurea</i> , Eastern Wahoo, 24", B&B
hy 15	<i>Hypericum kalmianum</i> , Kalm's St. Johnswort, 24", POT
iv 13	<i>Ilex verticillata</i> , Winterberry, 18-24", POT
ro 20	<i>Rosa virginiana</i> , Virginia Rose, 18", POT
sa 6	<i>Sambucus canadensis</i> , Elderberry, 24", POT
vp 3	<i>Viburnum prunifolium</i> , Blackhaw Viburnum, 4', B&B

**Evergreen Shrubs**

Sym. Qty.	Name, size, root condition
jc 8	<i>Juniperus communis</i> , Grey Owl Juniper, 15-18", CONT

**Surgical Options  
Representative Species List  
April 23, 2006**

Area A (low cost prairie at north end of lot).		Flower Color	Flower Period	Height	Comments
Scientific name	Common name				
<b>Grasses and Sedges</b>					
1 <i>Bouteloua curtipendula</i>	Side-oats Grama		A M J J A S O	2-3'	Short stature; orange "flower"
2 <i>Carex vulpinoidea</i>	Brown Fox Sedge			1-3'	Dense seed heads at end of stem
3 <i>Schizachyrium scoparium</i>	Little Bluestem			2-3'	Fine texture; white feathery seed head
4 <i>Sporobolus heterolepis</i>	Prairie Dropseed			2'	Forms arching mounds; elegant; fragrant
<b>Forbs and Shrubs</b>					
1 <i>Aquilegia canadensis</i>	Wild Columbine	Red & yel	A M J	1-2'	Butterfly plant; self sows
2 <i>Aselepias tuberosa</i>	Butterfly Weed	Org	J J A	2-3'	Butterfly plant; very showy; monarch larvae food source
3 <i>Aster azureus</i>	SKY Blue Aster	Blue	S O	1-2'	SKY blue color; butterfly plant
4 <i>Aster laevis</i>	Smooth Aster	Blue	A S O	3-5'	Butterfly plant; foliage is smooth; butterfly plant
5 <i>Aster novae-angliae</i>	New England Aster	Purp-blue	A S O	2-4'	Butterfly plant; very showy; late season color
6 <i>Astragalus canadensis</i>	Canada Milk Vetch	Crm-yel	J J A	1-4'	Pea-like flowers held above foliage; legume
7 <i>Campánula americana</i>	Tall Bellflower	Blue	J A S	3-5'	Biennial; butterfly plant; flowers star-like
8 <i>Coreopsis palmata</i>	Stiff Coreopsis	Yel	J J A	12"	Butterfly plant; spreads
9 <i>Dalea purpurea</i>	Purple Prairie Clover	Purp	J J A	1'	Butterfly plant; very showy
10 <i>Echinacea pallida</i>	Pale Purple Coneflower	Lav	J J	2-4'	Butterfly plant; threatened in WI
11 <i>Helianthus helianthoides</i>	Ox Eye Sunflower	Yel	J J A S	2-5'	Forms clumps; butterfly plant
12 <i>Kuhnia eupatorioides</i>	False Boneset	Crm-Whit	A S	2-3'	Erect stem with flat flower cluster; gray-green foliage
13 <i>Lespedeza capitata</i>	Roundhead Bush Clover	Crm-Grn	A S O	1-4'	Interesting winter texture; nitrogen fixer
14 <i>Liatris aspera</i>	Blazing Star	Purp	J A S	2-3'	Very showy; butterfly plant
15 <i>Monarda fistulosa</i>	Bergamot	Lav	J A S	2-4'	Butterfly and humming bird plant; aromatic
16 <i>Penstemon digitalis</i>	Smooth Penstemon	Wht-pur	J J	2-4'	Leaf finely toothed; readily self sows
17 <i>Ratibida pinnata</i>	Yellow Coneflower	Yel	J A S	3-4'	Short-lived colonizer; butterfly plant; aromatic seed head
18 <i>Rudbeckia hirta</i>	Black-eyed Susan	Yel	J J A S O	2-3'	Biennial; pioneer; butterfly plant
19 <i>Tradescantia ohimensis</i>	Spiderwort	Blue	M J	1-2'	Butterfly plant; forms arching clumps
20 <i>Zizia aurea</i>	Golden Alexanders	Yel	A M J	1-3'	Butterfly plant

**Surgical Options  
Representative Species List  
April 23, 2006**

Area B (eastern border, no-mow with showy forbs)						
Scientific name	Common name	Flower Color	Flower Period	Height	Comments	
<b>Grasses and Sedges</b>						
1 <i>Festuca</i> spp.	No-mow		A M J J A S O	3-8"	Fine texture	
<b>Forbs and Shrubs</b>						
1 <i>Allium cernuum</i>	Nodding Wild Onion	Lav	J A	10-16"	Can divide the edible bulb, butterfly plant	
2 <i>Anemone canadensis</i>	Canada Anemone	Wht	M J	6-10"	Will slowly spread; low-growing; mace-like seed head	
3 <i>Aquilegia canadensis</i>	Wild Columbine	Red & yel	A M J	1-2'	Butterfly plant; self sows	
4 <i>Artemisia ludoviciana</i>	White Sage	Grn	A S	2-3'	Gray-green foliage; fuzzy	
5 <i>Asclepias tuberosa</i>	Butterfly Weed	Org	J J A	2-3'	Butterfly plant; very showy; monarch larvae food source	
6 <i>Aster azureus</i>	Sky Blue Aster	Blue	S O	1-2'	Sky blue color; butterfly plant	
7 <i>Coreopsis palmata</i>	Stiff Coreopsis	Yel	J J A	1-2'	Butterfly plant; spreads	
8 <i>Dalea candida</i>	White Prairie Clover	Wht	J J A	1'	Butterfly plant; legume	
9 <i>Dalea purpurea</i>	Purple Prairie Clover	Purp	J J A	1'	Butterfly plant; very showy	
10 <i>Dodecatheon meadia</i>	Shooting Star	Lav-wht	A M J	4-6"	Flower looks like a shooting star; spreads slowly	
11 <i>Liatris aspera</i>	Blazing Star	Purp	J A S	2-3'	Very showy; butterfly plant	
12 <i>Monarda punctata</i>	Dotted Mint	Crn & purp	J A	6-12"	Biennial; flowers small but very showy; butterfly plant	
13 <i>Potentilla arguta</i>	Tall Cinquefoil	Yel	J A S	6-12"	Lower leaves feather-divided	
14 <i>Solidago nemoralis</i>	Dyer's weed	Yel	A S O	6-18"	Arching form; gray-green foliage; butterfly plant	
15 <i>Tradescantia ohioensis</i>	Spiderwort	Blue	M J	1-2"	Butterfly plant; forms arching clumps	
16 <i>Zizia aurea</i>	Golden Alexanders	Yel	A M J	1-2'	Butterfly plant	



**Surgical Options  
Representative Species List  
April 23, 2006**

Area C (bioswale)		Common name	Flower Color	Flower Period	Height	Comments
	<b>Wet area</b>	<b>Scientific name</b>				
		<b>Grasses and Sedges</b>		A M J J A S O		
x	x	Carex vulpinoidea			1-3'	Purple coloring on stem; fine texture
x	x	Calamagrostis canadensis			2-4'	Inflated, spiky seed head
x	x	Carex hystericina			1-2'	Terminal seed head spike, often colored yellow-green
x	x	Carex stipata			1-3'	Short stature; orange "flower"
x	x	Bouteloua curtipendula			2-3'	Fine texture; white feathery seed head
x	x	Schizachyrium scoparium			2'	Forms arching mounds; elegant; fragrant
x	x	Sporobolus heterolepis			2-3'	Fine texture
x	x	Bromus kalmii			3-6'	Cool season; clump forming
x	x	Elymus riparius			3-5'	Cool season; fine texture; wildlife food source
x	x	Glyceria striata				
		<b>Forbs and Shrubs</b>				
x	x	Allium cernuum	Lav	J A	10-20"	Can divide the edible bulb; butterfly plant
x	x	Anemone canadensis	Whit	M J	6-18"	Will slowly spread; low-growing; mace-like seed head
x	x	Aquilegia canadensis	Red & yel	A M J	1-2'	Butterfly plant; self sows
x	x	Asclepias incarnata	Purp-red	J J A	3-4'	Butterfly plant; very showy; monarch larvae food source
x	x	Asclepias tuberosa	Org	J J A	2-3'	Butterfly plant; very showy; monarch larvae food source
x	x	Aster azureus	Blue	S O	1-2'	Sky blue color; butterfly plant
x	x	Aster novae-angliae	Purp-blue	A S O	2-4'	Butterfly plant; very showy; late season color
x	x	Campanula americana	Blue	J A S	3-5'	Biennial; butterfly plant; flowers star-like
x	x	Dalea purpurea	Purp	J J A	12-18"	Butterfly plant; very showy
x	x	Echinacea pallida	Lav	J J	2-4'	Butterfly plant; threatened in WI
x	x	Eupatorium maculatum	Purp	J J A	3-5'	Leaves whorled; butterfly plant; terminal flower cluster
x	x	Eupatorium perfoliatum	Whit	J A S	2-4'	Stem pierces the wrinkled leaves
x	x	Helianthus autumnale	Yel	A S O	2-4'	Does not cause allergies; large flowers; very showy
x	x	Liatris aspera	Purp	J A S	2-3'	Very showy; butterfly plant
x	x	Liatris pycnostachya	Purp	J A S	3-4'	Very showy; butterfly plant
x	x	Lobelia siphilitica	Blue	J A S	1'	Butterfly plant; spikes of blue flowers
x	x	Monarda fistulosa	Lav	J A S	2-4'	Butterfly and humming bird plant; aromatic
x	x	Parthenium integrifolium	Whit	J J A S	2-3'	Flat topped flower clusters somewhat like a cauliflower head
x	x	Ratibida pinnata	Yel	J A S	3-4'	Short-lived colonizer; butterfly plant; aromatic seed head
x	x	Rudbeckia hirta	Yel	J J A S O	2-3'	Biennial; pioneer; butterfly plant
x	x	Rudbeckia triloba	Yel	J A S O	2-4'	Short-lived; butterfly plant; very showy
x	x	Tradescantia ohioensis	Blue	M J	1-2'	Butterfly plant; forms arching clumps
x	x	Veronicastrum virginicum	Whit	J J A	3-6'	Long flower spike; butterfly plant
x	x	Zizia aptera	Yel	A M J	1-2'	Heart-shaped leaves; butterfly plant
x	x	Zizia aurea	Yel	A M J	1-2'	Butterfly plant

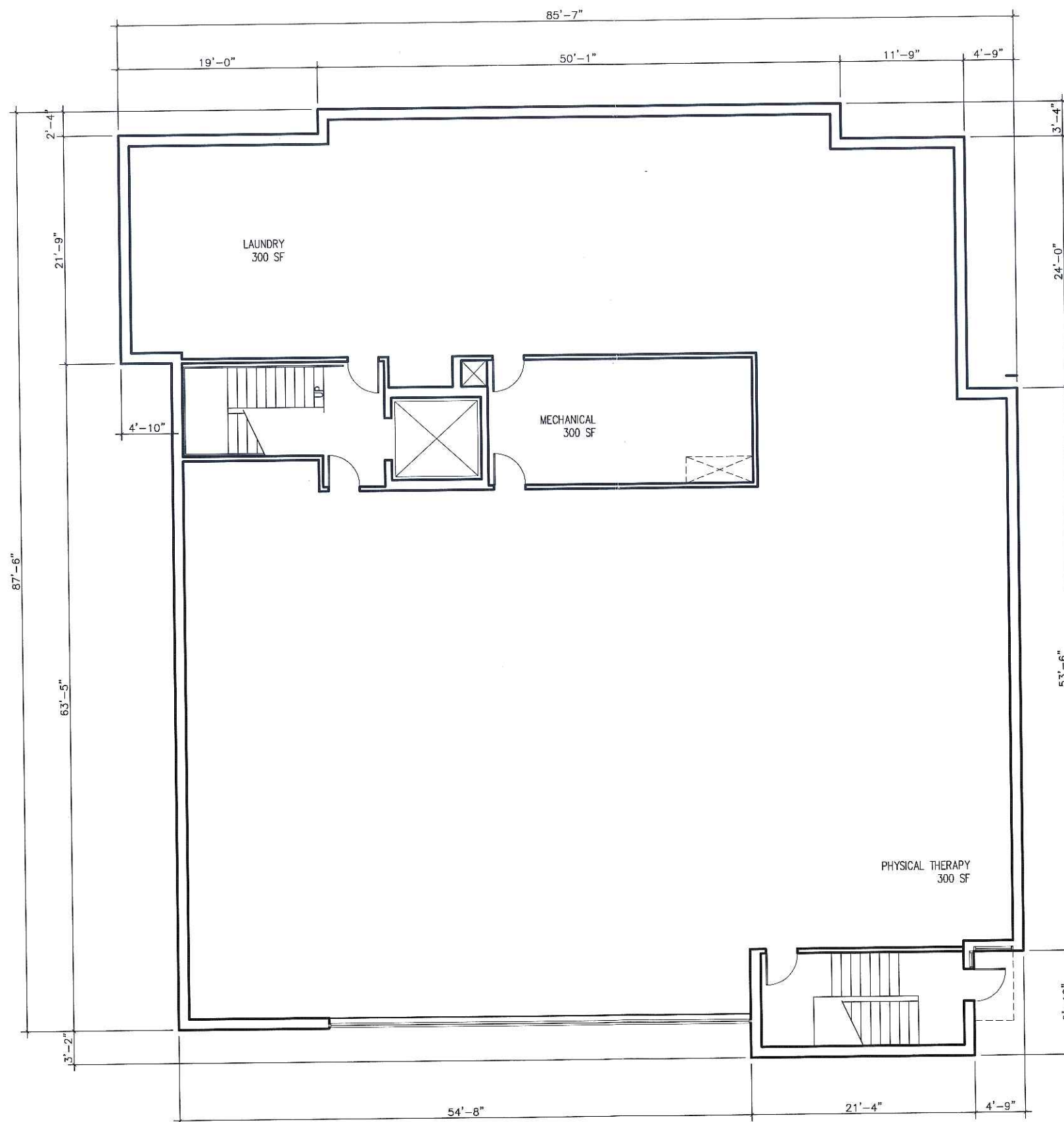
Surgical Options  
Representative Species List  
April 23, 2006

		Area E (detention pond)							
		Scientific name	Common name	Flower Color	Flower Period	Height	Comments		
Wet area					A M J J A S O				
		<b>Grasses and Sedges</b>							
x	1	<i>Bouteloua curtipendula</i>	Side-oats Grama			2-3'	Short stature; orange "flower"		
x	2	<i>Calamagrostis canadensis</i>	Bluejoint Grass			2-4'	Purple coloring on stem; fine texture		
x	3	<i>Carex hystericina</i>	Bottlebrush Sedge			1-3'	Inflated, spiky seed head		
x	4	<i>Carex stipitata</i>	Common Fox Sedge			1-3'	Terminal seed head spike, often colored yellow-green		
x	5	<i>Carex vulpinoidea</i>	Brown Fox Sedge			1-3'	Long seed head		
x	6	<i>Elymus riparius</i>	Riverbank Wild Rye			3-6'	Cool season; clump forming		
x	7	<i>Glyceria striata</i>	Fowl Mannia Grass			2-3'	Cool season; fine texture; wildlife food source		
x	8	<i>Schizachyrium scoparium</i>	Little Bluestem			2-3'	Fine texture; white feathery seed head		
x	9	<i>Scirpus atrovirens</i>	Dark Green Bulrush			3-5'	Dark green color; fine texture		
x	10	<i>Scirpus cyperinus</i>	Wool Grass			3-5'	Seed head is fuzzy		
x	11	<i>Sorghastrum nutans</i>	Indian Grass			3-6'	Rich golden brown feather-like seed head		
x	12	<i>Sporobolus heterolepis</i>	Prairie Dropseed			1-2'	Forms arching mounds; elegant; fragrant		
			<b>Forbs and Shrubs</b>						
x	1	<i>Allium cernuum</i>	Nodding Wild Onion	Lav	J A	10-20"	Can divide the edible bulb; butterfly plant		
x	2	<i>Asclepias incarnata</i>	Marsh Milkweed	Purp-red	J J A	3-4'	Butterfly plant; very showy; monarch larvae food source		
x	3	<i>Asclepias tuberosa</i>	Butterfly Weed	Org	J J A	2-3'	Butterfly plant; very showy; monarch larvae food source		
x	4	<i>Aster azureus</i>	Sky Blue Aster	Blue	S O	1-2'	Sky blue color; butterfly plant		
x	5	<i>Aster novae-angliae</i>	New England Aster	Purp-blue	A S O	2-4'	Butterfly plant; very showy; late season color		
x	6	<i>Aster simplex</i>	Marsh Aster	Whit	A S	2-4'	Willow-like leaves; flowers are small, often pink-tinged		
x	7	<i>Cacalia atriplicifolia</i>	Pale Indian Plantain	Whit	J A S	3-5'	Leaves white underneath; red stem; distinctive foliage		
x	8	<i>Echinacea pallida</i>	Pale Purple Coneflower	Lav	J J	2-4'	Butterfly plant; threatened in WI		
x	9	<i>Eupatorium perfoliatum</i>	Boneset	Whit	J A S	2-4'	Stem pierces the wrinkled leaves		
x	10	<i>Helenium autumnale</i>	Sneezeweed	Yel	A S O	2-4'	Does not cause allergies; large flowers; very showy		
x	11	<i>Liatris aspera</i>	Blazing Star	Purp	J A S	2-3'	Very showy; butterfly plant		
x	12	<i>Liatris pycnostachya</i>	Prairie Blazingstar	Purp	J A S	3-4'	Very showy; butterfly plant		
x	13	<i>Liatris spicata</i>	Marsh Blazingstar	Purp	A S	2-3'	Very showy; butterfly plant		
x	14	<i>Lobelia siphilitica</i>	Great Blue Lobelia	Blue	J A S	1'	Butterfly plant; spikes of blue flowers		
x	15	<i>Monarda fistulosa</i>	Bergamot	Lav	J A S	2-4'	Butterfly and humming bird plant; aromatic		
x	16	<i>Penstemon digitalis</i>	Smooth Penstemon	Whit-pur	J J	2-4'	Leaf finely toothed; readily self sows		
x	17	<i>Ratibida pinnata</i>	Yellow Coneflower	Yel	J A S	3-4'	Short-lived colonizer; butterfly plant; aromatic seed head		
x	18	<i>Rudbeckia hirta</i>	Black-eyed Susan	Yel	J J A S O	2-3'	Biennial; pioneer; butterfly plant		
x	19	<i>Rudbeckia triloba</i>	Branched Coneflower	Yel	J A S O	2-4'	Short-lived; butterfly plant; very showy		
x	20	<i>Siphium terebinthinaceum</i>	Prairie Dock	Yel	J A S	4-7'	Taproots reach 9-12 deep; butterfly & bird plant		
x	21	<i>Solidago grammifolia</i>	Grass-leaved Goldenrod	Yel	J A S	2-4'	Grass-like foliage; small but abundant flowers		
x	22	<i>Tradescantia ohioensis</i>	Spiderwort	Blue	M J	1-2'	Butterfly plant; forms arching clumps		
x	23	<i>Verbena hastata</i>	Blue Vervain	Blue	J A S	2-6'	Arrowhead shaped leaves; butterfly plant		
x	24	<i>Veronica fasciculata</i>	Ironweed	Purp	J A S	4-6'	Butterfly plant; very showy; rich color		
x	25	<i>Veronicastrum virginicum</i>	Culver's Root	Whit	J J A	3-6'	Long flower spike; butterfly plant		
x	26	<i>Zizia aurea</i>	Golden Alexanders	Yel	A M J	1-2'	Butterfly plant		



Three Point Place  
Madison, WI 53719  
608-833-2321  
608-833-7964 Fax

CONSULTANTS



PROJECT  
**VETERINARY  
SPECIALTY  
OPTIONS,  
INC.**

MADISON, WI.

ISSUED  
5-24-06 SCHEMATIC DESIGN  
6-21-06 SECOND URBAN DESIGN SUBMITTAL

REVISED

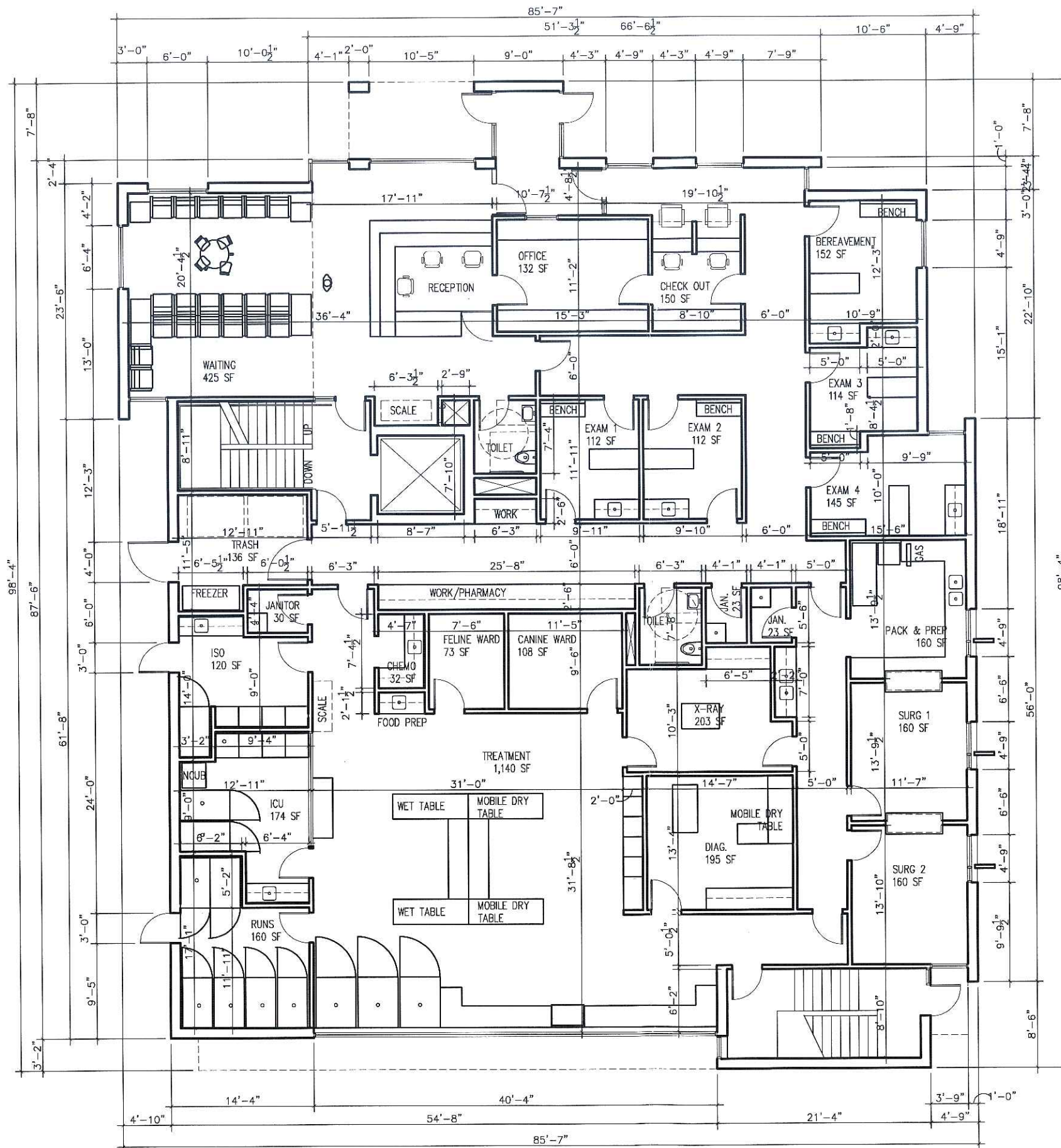
© 2006 THE RENSCHLER COMPANY, INC.

PROJECT NUMBER 60057

**BASEMENT  
FLOOR PLAN**



**A1.0**  
SHEET



Design/Build Construction Services  
 Architecture  
 Engineering



Three Point Place  
 Madison, WI 53719  
 608-833-2321  
 608-833-7904 Fax

CONSULTANTS

PROJECT  
**VETERINARY  
 SPECIALTY  
 OPTIONS,  
 INC.**

MADISON, WI.

ISSUED  
 5-24-06 SCHEMATIC DESIGN  
 6-21-06 SECOND UPRN DESIGN SUBMITTAL

REVISED

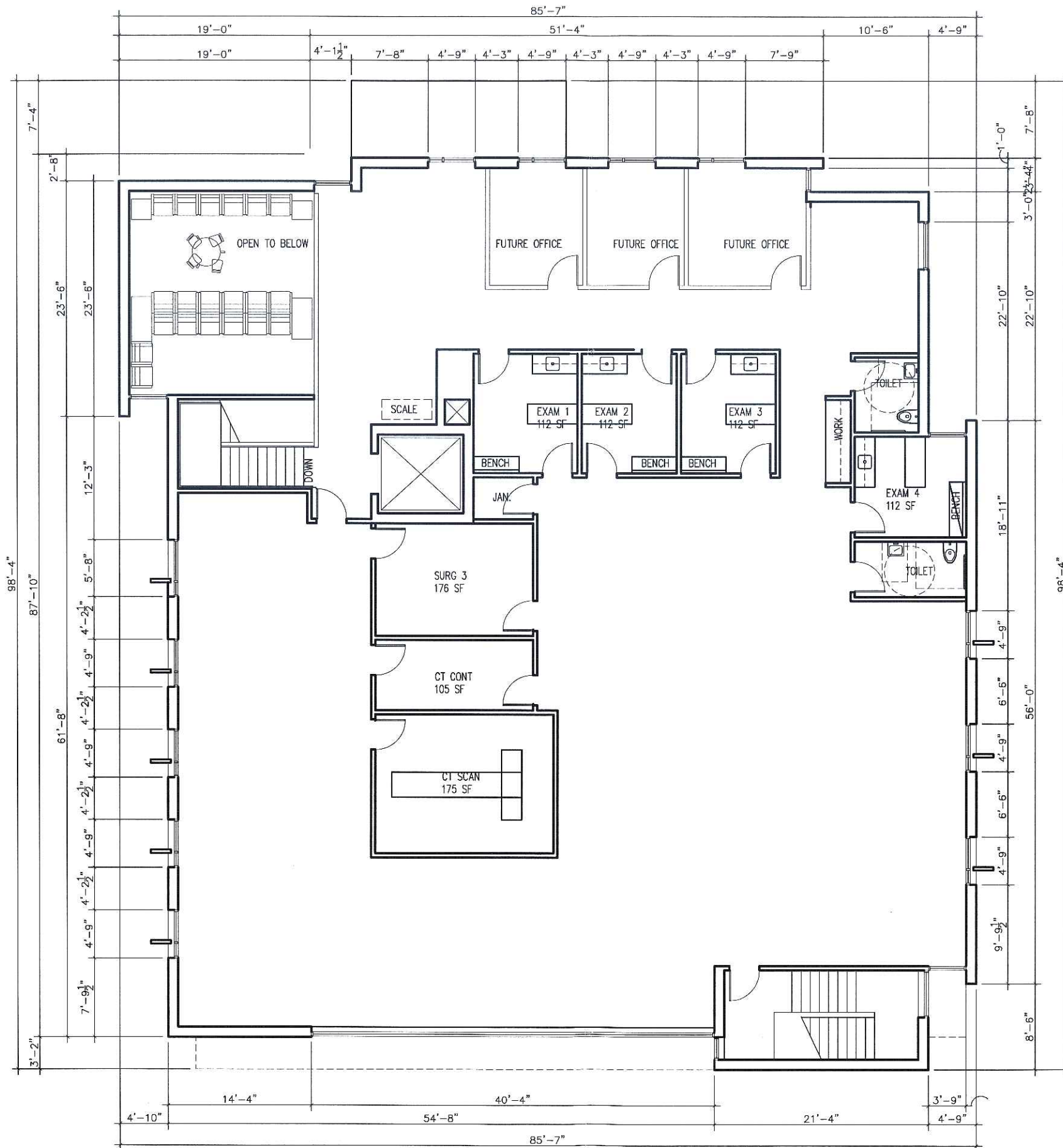
© 2006, THE RENSCHLER COMPANY, INC.

PROJECT NUMBER 60657

**FIRST FLOOR PLAN**



**A1.1**  
 SHEET



Design/Build Construction Services  
 Architecture  
 Engineering



Three Point Place  
 Madison, WI 53719  
 608-833-2321  
 608-833-7964 Fax

CONSULTANTS

PROJECT  
**VETERINARY  
 SPECIALTY  
 OPTIONS,  
 INC.**

MADISON, WI.

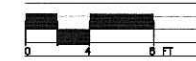
ISSUED  
 5-24-06 SCHEMATIC DESIGN  
 6-21-06 SECOND URBAN DESIGN SUBMITTAL

REVISED

© 2006, THE RENSCHLER COMPANY, INC.

PROJECT NUMBER 00057

**SECOND  
 FLOOR PLAN**



**A1.2**  
 SHEET



Three Point Place  
Madison, WI 53719  
608-833-2321  
608-833-7964 Fax

CONSULTANTS

PROJECT  
**VETERINARY  
SPECIALTY  
OPTIONS,  
INC.**

MADISON, WI.

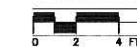
ISSUED  
5-24-06 SCHEMATIC DESIGN  
6-21-06 SECOND URBAN DESIGN SUBMITTAL

REVISED

© 2006, THE RENSCHLER COMPANY, INC.

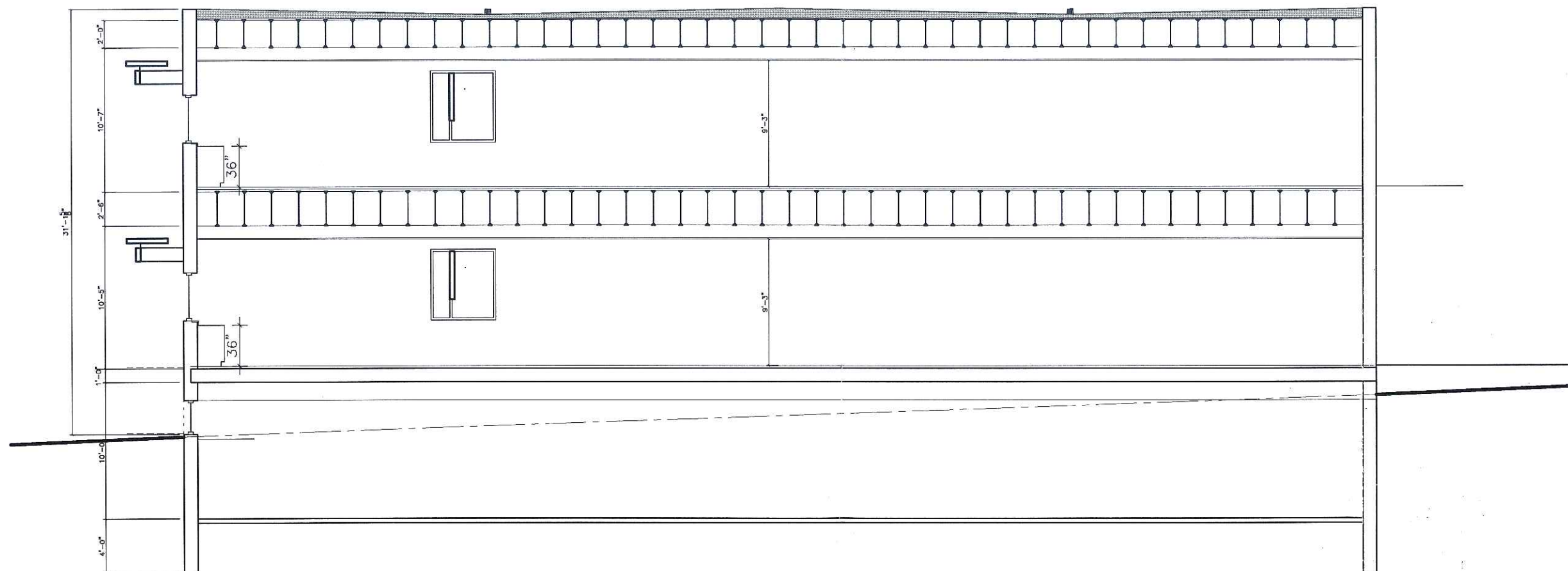
PROJECT NUMBER 60667

**BUILDING  
SECTION**



**A4.0**

SHEET











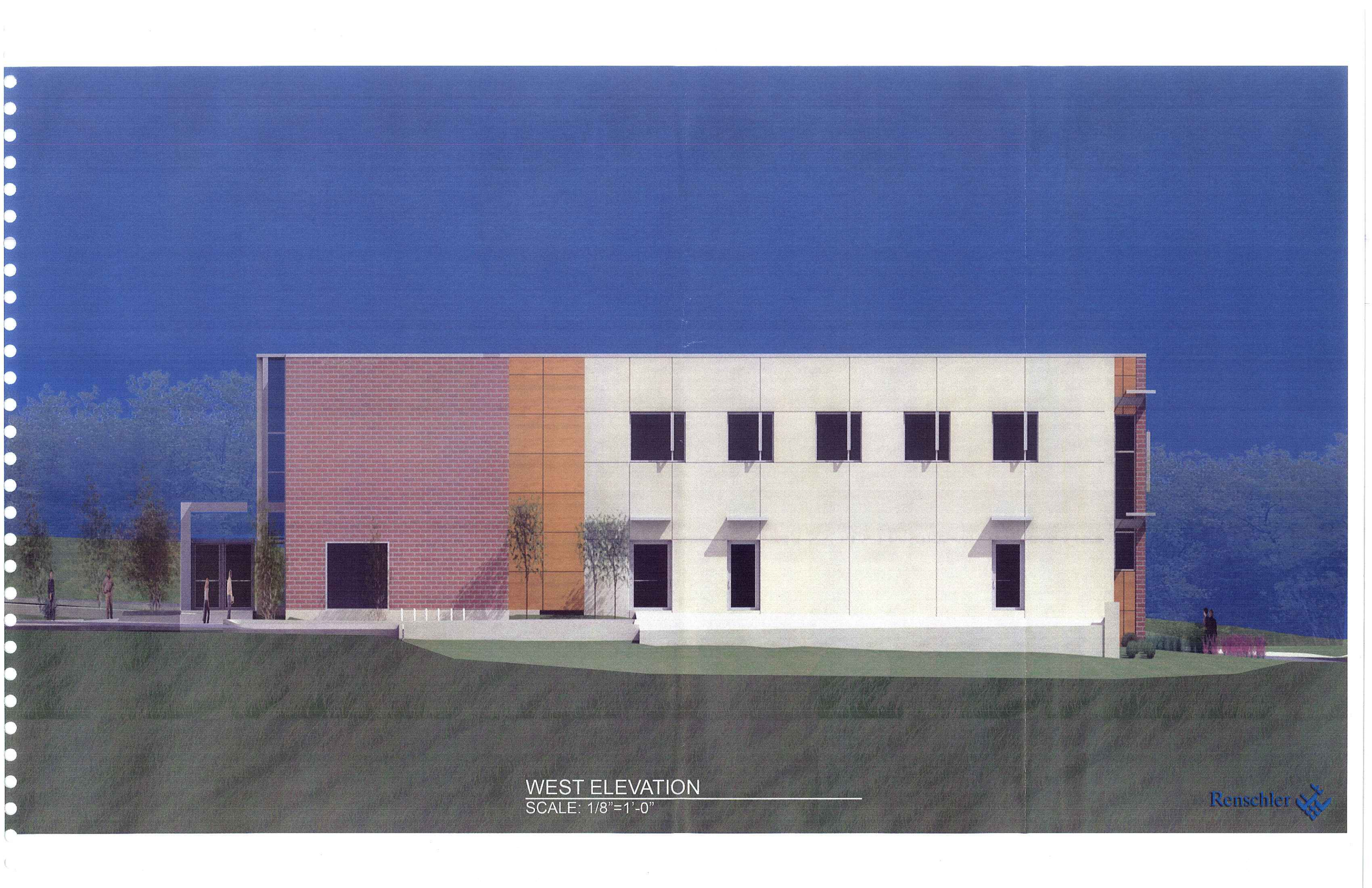
SOUTH ELEVATION  
SCALE: 1/8"=1'-0"



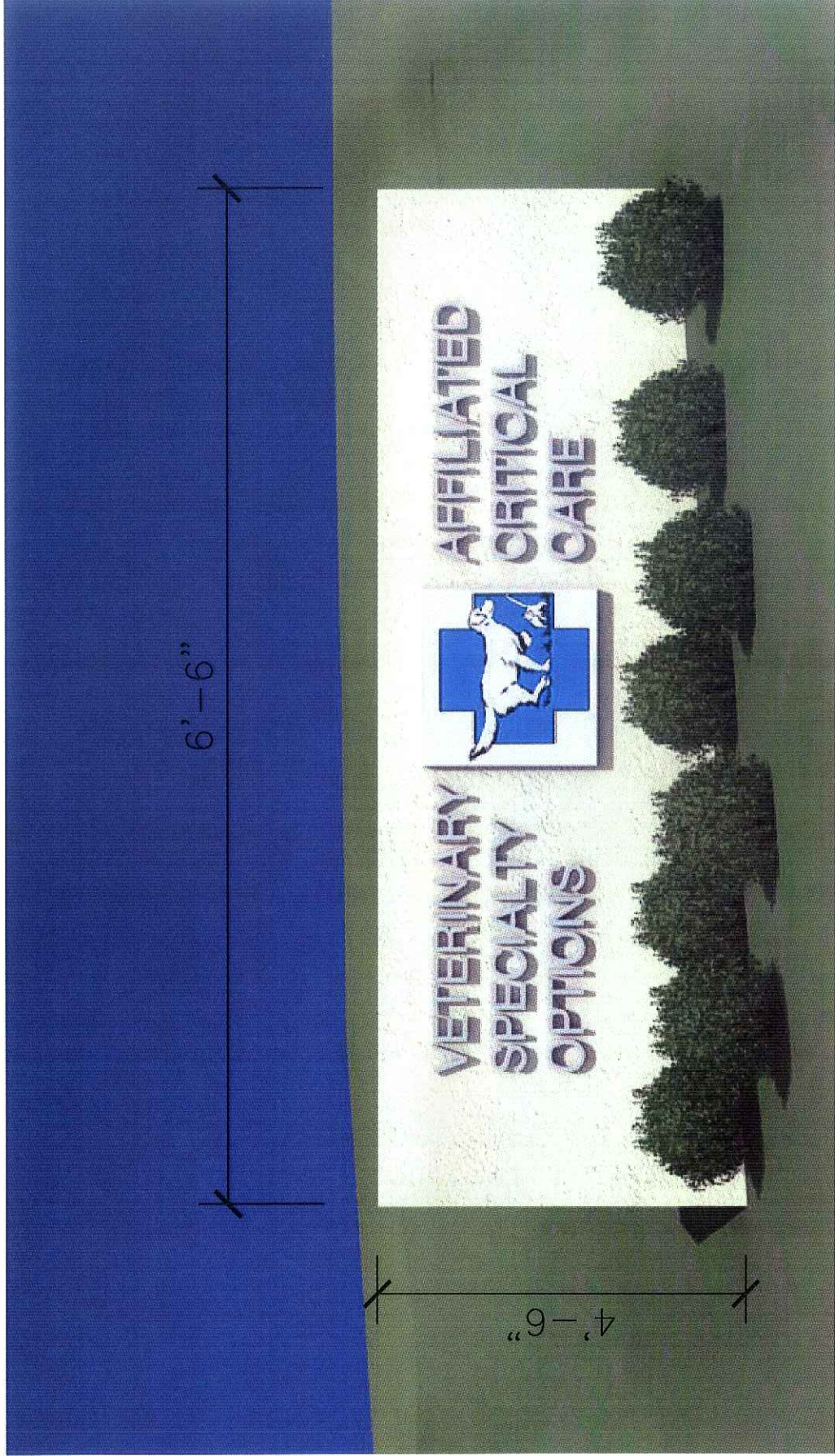
NORTH ELEVATION  
SCALE: 1/8"=1'-0"



EAST ELEVATION  
SCALE: 1/8"=1'-0"



WEST ELEVATION  
SCALE: 1/8"=1'-0"



VETERINARY  
SPECIALTY  
OPTIONS,  
INC.

MONUMENT SIGN

SCALE: 1"=1'-0"

Renschler 