

# 2024 Affordable Rental Development

I: Location

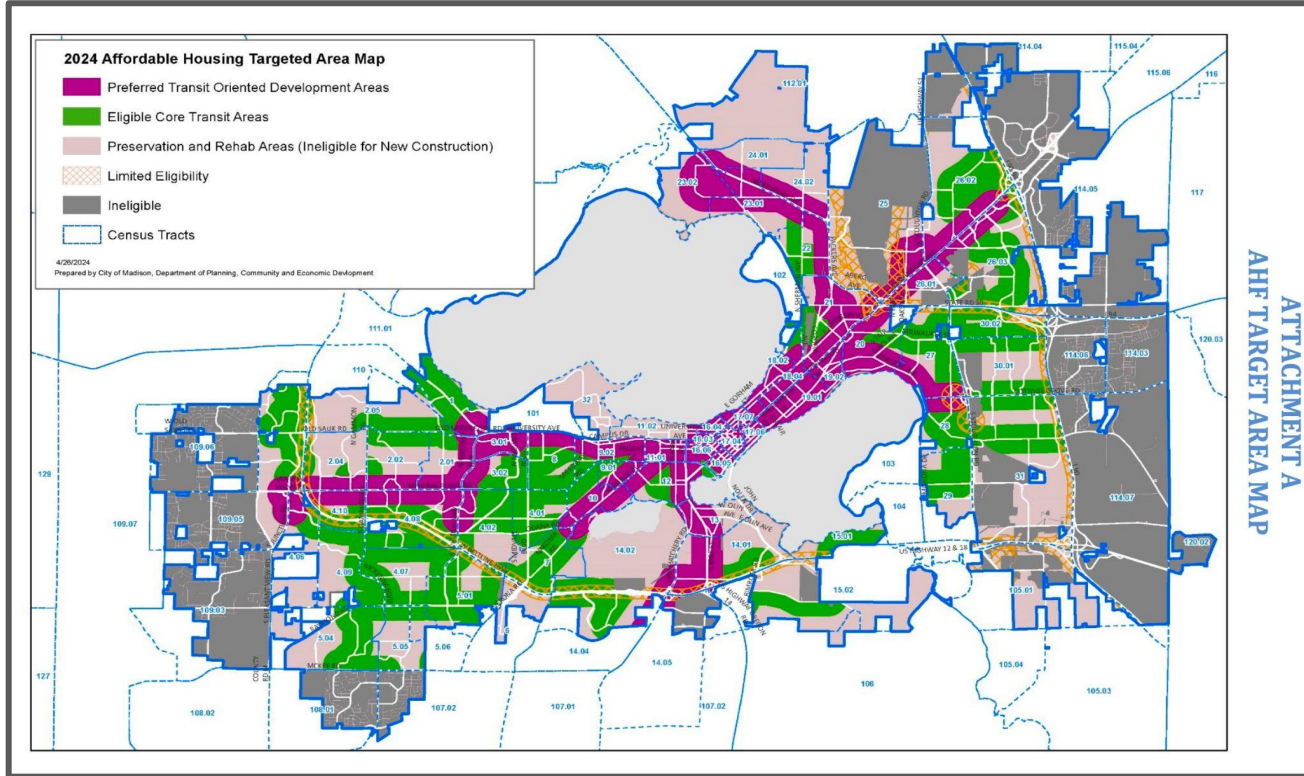
II: Views

III: Sample unit

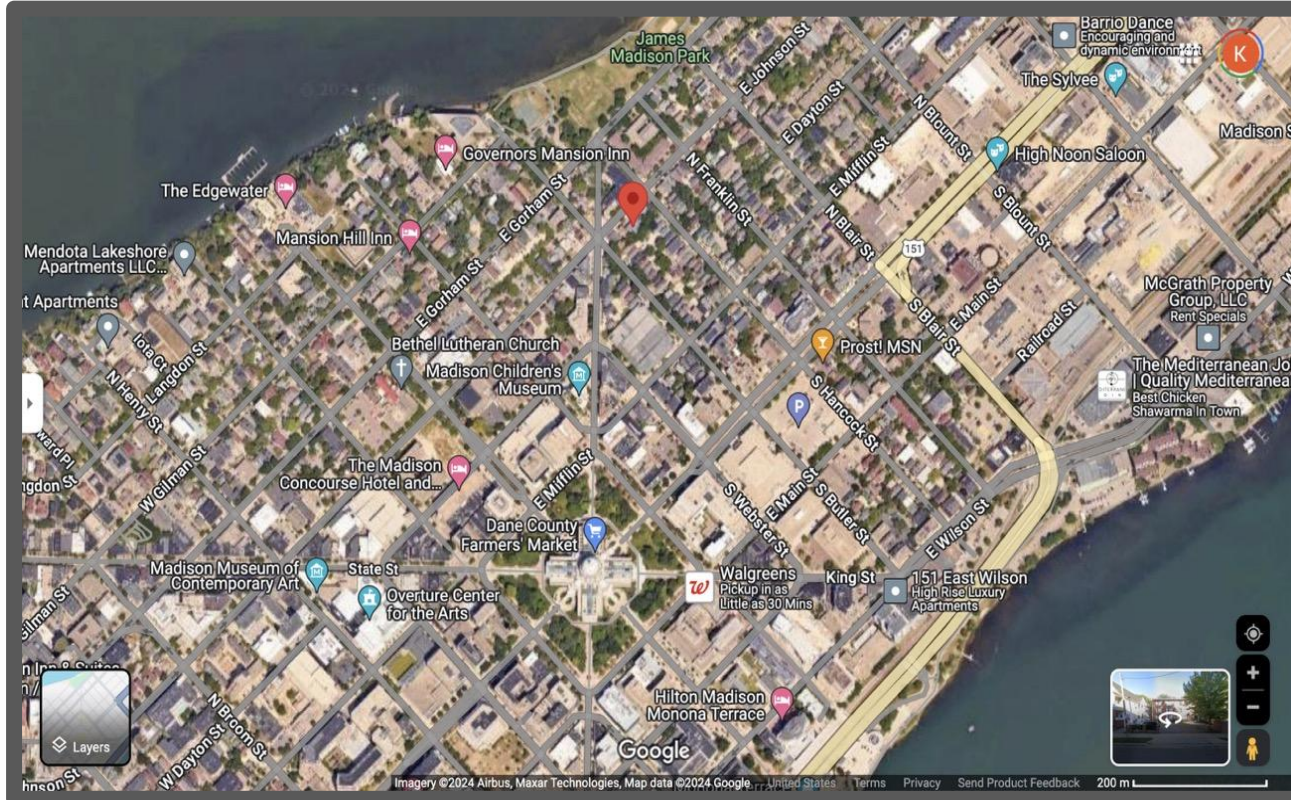
IV: Unit mix/Affordability

Name: Kaba Bah

# AHF: Target Map



Location: 113 East Johnson st.



Entire capital: 3 blocks  
The edge water: 4 blocks  
James Madison: 1 block  
Children's museum: 2 blocks

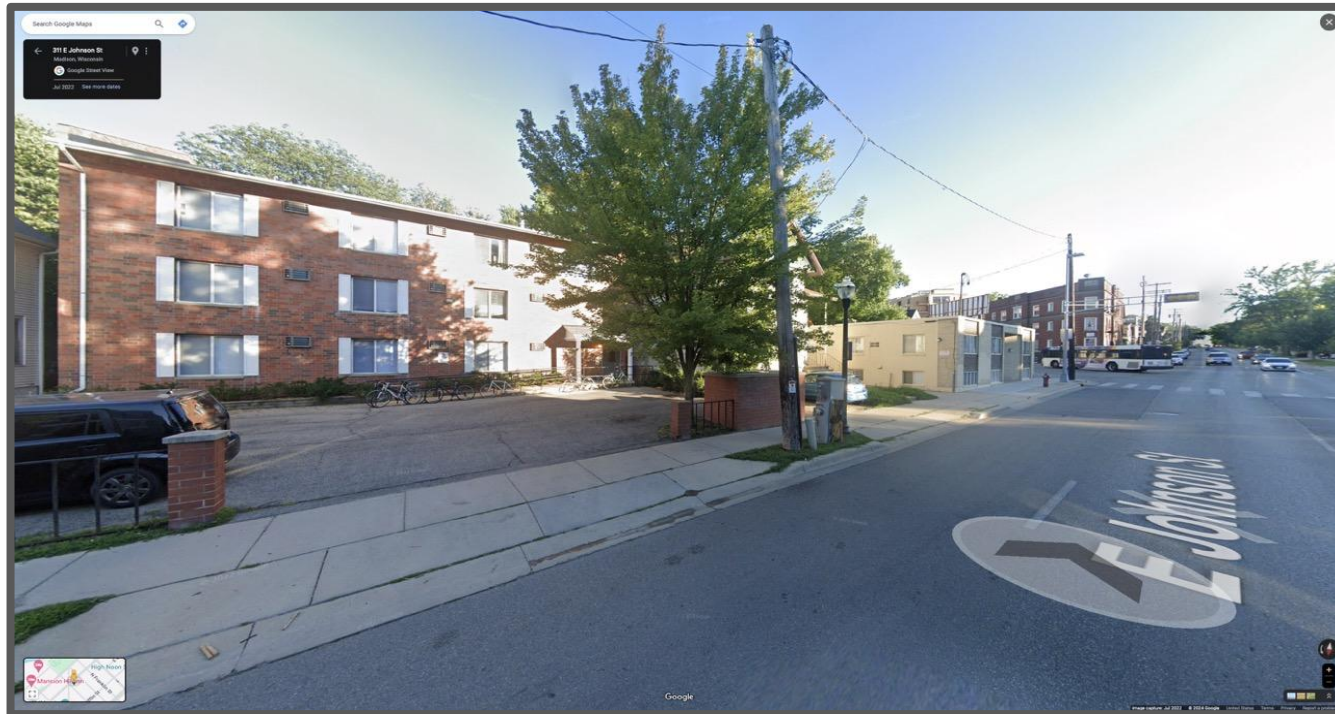


# Plan view: Site



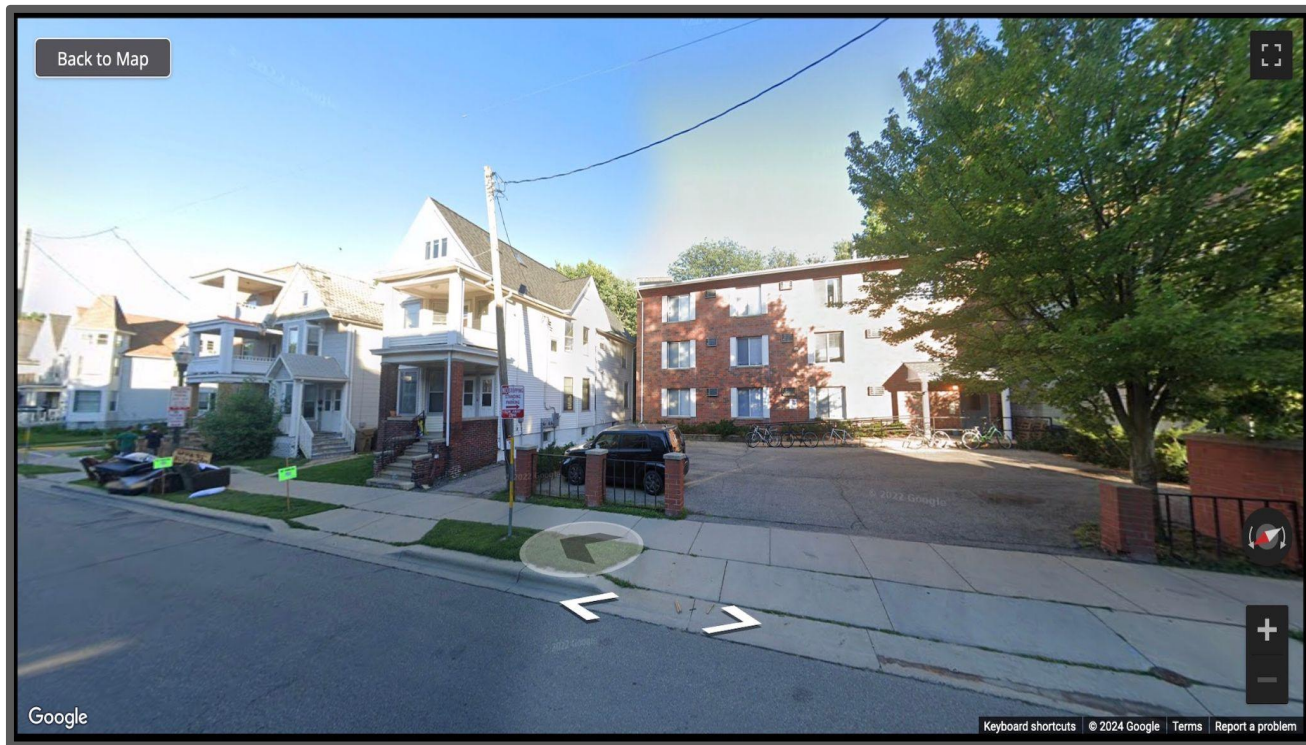
Entire capital: 3 blocks  
The edge water: 4 blocks  
James Madison: 1 block  
Children's museum: 2 blocks  
Preferred TOD

# Street view: East



Grocery store: 0.5miles  
Job training: 0.3miles  
Public park: 0.2miles  
Bank: 0.2miles

# Street view: East



Festival foods: 0.5miles  
B-cycle station: 0.2miles  
Public library: 0.2miles  
Retail: 0.05miles



# Interior: Sample unit



Pros:

Simple  
Clean  
Durable

Cons:

Energy efficiency



# Unit mix/Affordability

Total units: 22  
60% AMI: 18 units  
80% AMI: 4 units  
Duration: 40 years  
Management: Professional  
Tenant selection: Professional  
Efficiency: Net zero, Gas free  
Process: Straight forward

