



ARCHITECTURE
ENGINEERING
INTERIOR DESIGN

STRANG INC.
8425 MINERAL POINT ROAD
MADISON, WI 53708-4895
T/ 608 276 9200
F/ 608 276 9204

ISSUED FOR:
BID PACKAGE #2
PHASE B-C-D
ADDENDA 1 THRU 4
03-24-09

DRAWING SET	CD
COPYRIGHT	2009
FILE NAME	2008037-A200A.DWG
REVISIONS	
DRAWN	LBO
CHECKED	DV
DATE	02-12-09
PROJECT NO.	2008037
PROJECT TITLE	

**THE ATRIUM
REMODEL AT
THE VILLAGER
PHASE B-C-D**

2300 S. PARK STREET
MADISON, WISCONSIN 53713

SHEET TITLE
**BASEMENT
FLOOR PLAN**

SHEET NO.
A200

**FIBER CONNECTION
IN THIS AREA**



**CAMERA - 1
360**

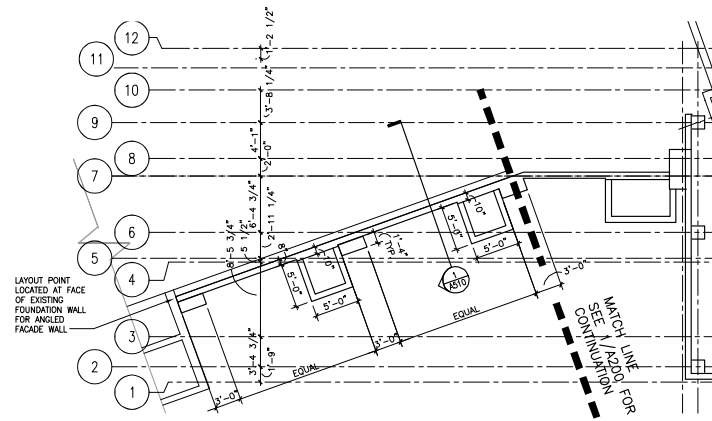
**CITY IT DATA
CLOSET W/ FIBER
CONNECTION**



ATRIUM CAMERA PLANS
11/27/24 J. Whitney
12/6/24
2/5/26
2/27/26

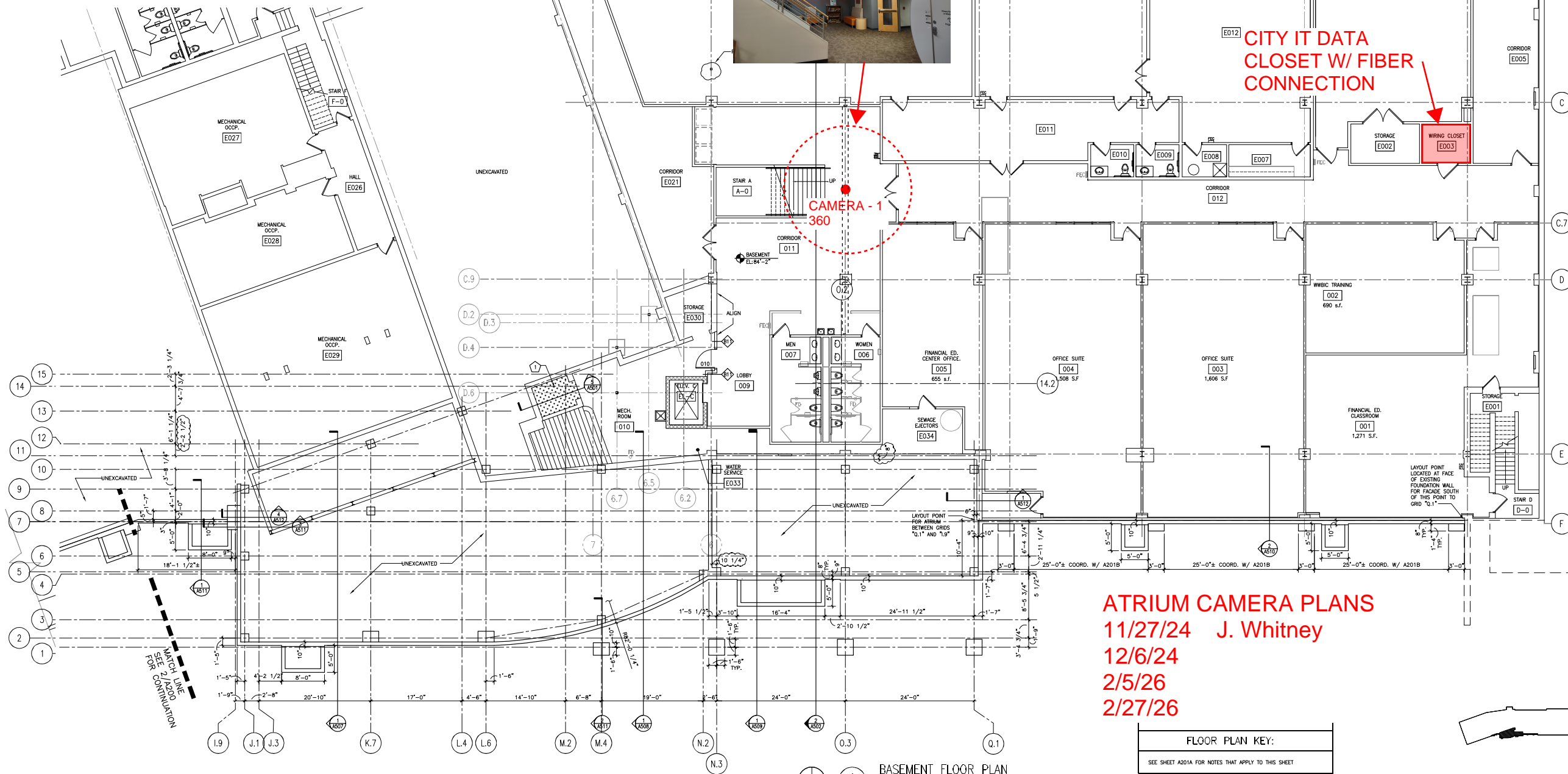
FLOOR PLAN KEY:

SEE SHEET A201A FOR NOTES THAT APPLY TO THIS SHEET



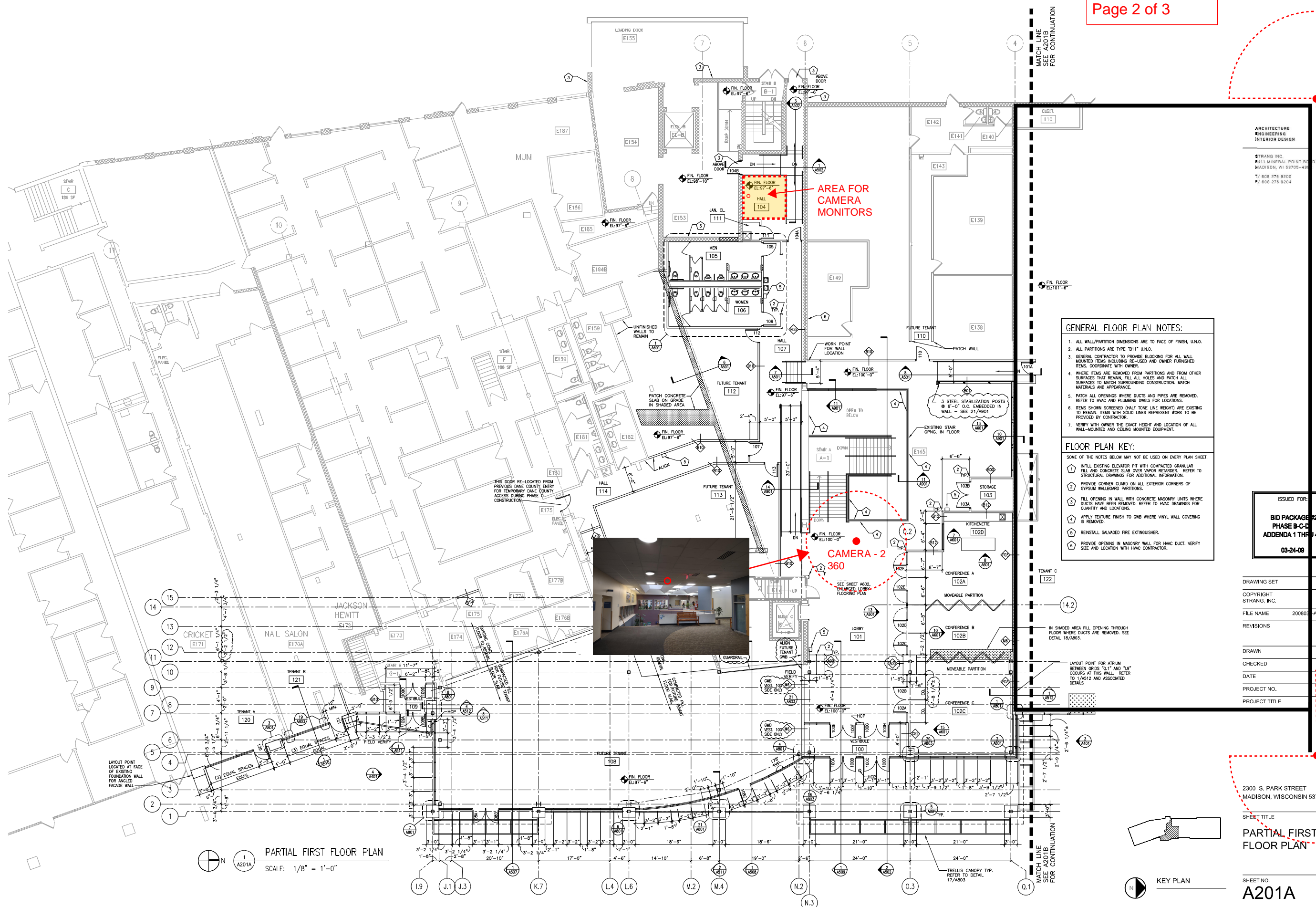
PARTIAL BASEMENT FLOOR PLAN

SCALE: 1/8" = 1'-0"



BASEMENT FLOOR PLAN

SCALE: 1/8" = 1'-0"



ARCHITECTURE
ENGINEERING
INTERIOR DESIGN

STRANG INC.
8421 MINERAL POINT RD
MADISON, WI 53705-4311
T/ 608 276 9200
F/ 608 276 9204

- GENERAL FLOOR PLAN NOTES:**
1. ALL WALL/PARTITION DIMENSIONS ARE TO FACE OF FINISH, U.N.O.
 2. ALL PARTITIONS ARE TYPE "B1" U.N.O.
 3. GENERAL CONTRACTOR TO PROVIDE BLOCKING FOR ALL WALL MOUNTED ITEMS INCLUDING RE-USED AND OWNER FURNISHED ITEMS. COORDINATE WITH OWNER.
 4. WHERE ITEMS ARE REMOVED FROM PARTITIONS AND FROM OTHER SURFACES THAT REMAIN, FILL ALL HOLES AND PATCH ALL SURFACES TO MATCH SURROUNDING CONSTRUCTION. MATCH MATERIALS AND APPEARANCE.
 5. PATCH ALL OPENINGS WHERE DUCTS AND PIPES ARE REMOVED. REFER TO HVAC AND PLUMBING DINGS FOR LOCATIONS.
 6. ITEMS SHOWN SCREENED (HALF TONE LINE WEIGHT) ARE EXISTING TO REMAIN. ITEMS WITH SOLID LINES REPRESENT WORK TO BE PROVIDED BY CONTRACTOR.
 7. VERIFY WITH OWNER THE EXACT HEIGHT AND LOCATION OF ALL WALL-MOUNTED AND CEILING MOUNTED EQUIPMENT.

- FLOOR PLAN KEY:**
- SOME OF THE NOTES BELOW MAY NOT BE USED ON EVERY PLAN SHEET.
1. INFILL EXISTING ELEVATOR PIT WITH COMPACTED GRANULAR FILL AND CONCRETE SLAB OVER VAPOR RETARDER. REFER TO STRUCTURAL DRAWINGS FOR ADDITIONAL INFORMATION.
 2. PROVIDE CORNER GUARD ON ALL EXTERIOR CORNERS OF OLYSIUM WALLS/PARTITIONS.
 3. FILL OPENING IN WALL WITH CONCRETE MASONRY UNITS WHERE DUCTS HAVE BEEN REMOVED. REFER TO HVAC DRAWINGS FOR QUANTITY AND LOCATIONS.
 4. APPLY TEXTURE FINISH TO OMB WHERE VINYL WALL COVERING IS REMOVED.
 5. REINSTALL SALVAGED FIRE EXTINGUISHER.
 6. PROVIDE OPENING IN MASONRY WALL FOR HVAC DUCT. VERIFY SIZE AND LOCATION WITH HVAC CONTRACTOR.

ISSUED FOR:
BID PACKAGE #2
PHASE B-C-D
APPENDIX 1 THROUGH 4
03-24-09

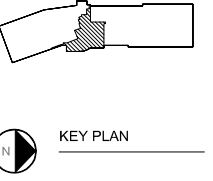
DRAWING SET	CD
COPYRIGHT	2009
FILE NAME	200803-2A201A.DWG
REVISIONS	
DRAWN	LBO
CHECKED	DV
DATE	02-12-09
PROJECT NO.	2008037
PROJECT TITLE	

2300 S. PARK STREET
MADISON, WISCONSIN 53713

SHEET TITLE
PARTIAL FIRST FLOOR PLAN

SHEET NO.
A201A

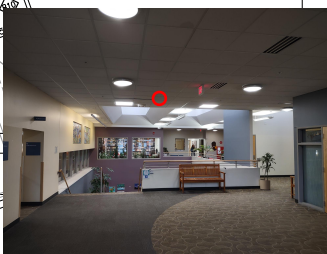
PARTIAL FIRST FLOOR PLAN
SCALE: 1/8" = 1'-0"



CAMERA - 4
360

CAMERA - 2
360

CAMERA - 3
360





ARCHITECTURE
ENGINEERING
INTERIOR DESIGN

STRANG INC.
8423 MINERAL POINT ROAD
MADISON, WI 53705-4895
T/ 608 276 9200
F/ 608 276 9204



- GENERAL FLOOR PLAN NOTES:**
1. ALL WALL/PARTITION DIMENSIONS ARE TO FACE OF FINISH, U.N.O.
 2. ALL PARTITIONS ARE TYPE "B11" U.N.O.
 3. GENERAL CONTRACTOR TO PROVIDE BLOCKING FOR ALL WALL MOUNTED ITEMS INCLUDING RE-USED AND OWNER FURNISHED ITEMS. COORDINATE WITH OWNER.
 4. WHERE ITEMS ARE REMOVED FROM PARTITIONS AND FROM OTHER SURFACES THAT REMAIN, FILL ALL HOLES AND PATCH ALL SURFACES TO MATCH SURROUNDING CONSTRUCTION, MATCH MATERIALS AND APPEARANCE.
 5. PATCH ALL OPENINGS WHERE DUCTS AND PIPES ARE REMOVED. REFER TO HVAC AND PLUMBING DWS.S FOR LOCATIONS.
 6. ITEMS SHOWN SCREENED (HALF TONE LINE HEIGHT) ARE EXISTING TO REMAIN. ITEMS WITH SOLID LINES REPRESENT WORK TO BE PROVIDED BY CONTRACTOR.
 7. VERIFY WITH OWNER THE EXACT HEIGHT AND LOCATION OF ALL WALL-MOUNTED AND CEILING MOUNTED EQUIPMENT.

- FLOOR PLAN KEY:**
- SOME OF THE NOTES BELOW MAY NOT BE USED ON EVERY PLAN SHEET.
1. INFILL EXISTING ELEVATOR PIT WITH COMPACTED GRANULAR, FILL AND CONCRETE SLAB OVER VAPOR RETARDER. REFER TO STRUCTURAL DRAWINGS FOR ADDITIONAL INFORMATION.
 2. PROVIDE CORNER GUARD ON ALL EXTERIOR CORNERS OF GYPSUM WALLBOARD PARTITIONS.
 3. FILL OPENING IN WALL WITH CONCRETE MASONRY UNITS WHERE DUCTS HAVE BEEN REMOVED. REFER TO HVAC DRAWINGS FOR QUANTITY AND LOCATIONS.
 4. APPLY TEXTURE FINISH TO GMB WHERE VINYL WALL COVERING IS REMOVED.
 5. REINSTALL SALVAGED FIRE EXTINGUISHER.
 6. PROVIDE OPENING IN MASONRY WALL FOR HVAC DUCT. VERIFY SIZE AND LOCATION WITH HVAC CONTRACTOR.

ISSUED FOR:
BID PACKAGE #2
PHASE B-C-D
ADDENDA 1 THRU 4
03-24-09

DRAWING SET	CD
COPYRIGHT	2009
STRANG, INC.	
FILE NAME	2008037-A202.DWG
REVISIONS	
DRAWN	DR
CHECKED	DV
DATE	02-12-09
PROJECT NO.	2008037
PROJECT TITLE	

**THE ATRIUM
REMODEL AT
THE VILLAGER
PHASE B-C-D**

2300 S. PARK STREET
MADISON, WISCONSIN 53713

SHEET TITLE
**SECOND FLOOR
PLAN**

SHEET NO.
A202

ENTRANCE CANOPY
SCALE: 1/8" = 1'-0"

SECOND FLOOR PLAN
SCALE: 1/8" = 1'-0"

KEY PLAN