

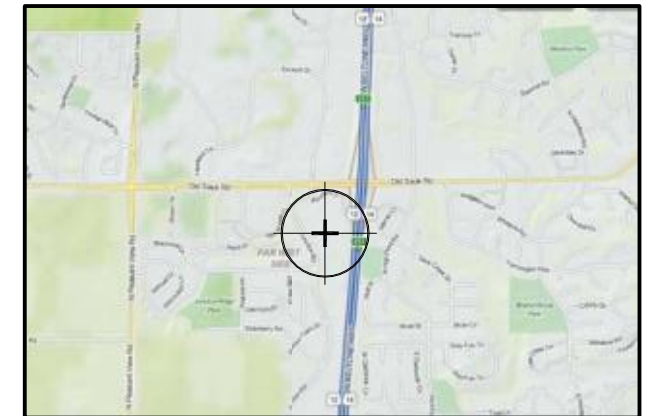
2310 Crossroads Drive
 Suite 2000
 Madison, WI 53718
 TEL 608 240-9900
 FAX 608 240-9690
 www.prarch.com

Milwaukee, WI • Madison, WI

Intelligent Designs Inspired Results

525 JUNCTION ROAD

Comprehensive Signage Review



 Location Map

City of Madison - Comprehensive Signage Review

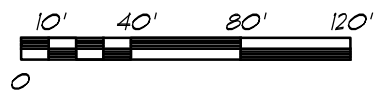
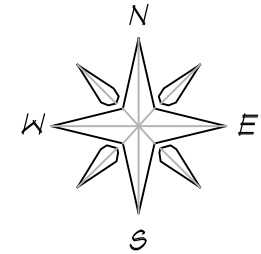
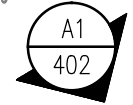
Project Location
 525 Junction Road
 Madison, Wisconsin

Comprehensive Signage Review
 525 Junction Road
 PRA #120406
 03 May 2013

Drawing Index

Architectural		Vital Signs	
000	Title Sheet	1	Directional Monument Sign
002	Overall Site Plan	1	Directional Monument Sign - Specifications
500	Aerial View - South	2	Highway Sign
501	Aerial View - East	2	Highway Sign - Specifications
502	Aerial View - North	3	Building Signage
503	Aerial View - West	3	Building Signage - Specifications
600	Existing Site Photos	4	Canopy Accent Signage
		4	Canopy Accent Signage - Specifications
		5	Kiosk Signage
		5	Kiosk Signage - Specifications
		6	Building Signage

LOT 2 SAUK JUNCTION.
PORTINO PLACE HOLDINGS LLC
#601 JUNCTION ROAD



LOT 6 SAUK JUNCTION.
BRESA PROPERTIES LLC EXTENDED
#617 JUNCTION ROAD

PLAN NOTES

- ① DIRECTIONAL MONUMENT
- ② HIGHWAY MONUMENT
- ③ BUILDING SIGNAGE
- ④ CANOPY ACCENT SIGNAGE
- ⑤ KIOSKS
- ⑥ ENTRY SIGNAGE

LOT 8 SAUK JUNCTION.
CITY CENTER WEST LLC
#530 JUNCTION ROAD



JUNCTION ROAD

EXISTING
EIGHT STORY BUILDING

EXISTING
PARKING STRUCTURE

EXISTING
TWO STORY
BUILDING

SURFACE LOT
26,602 SF

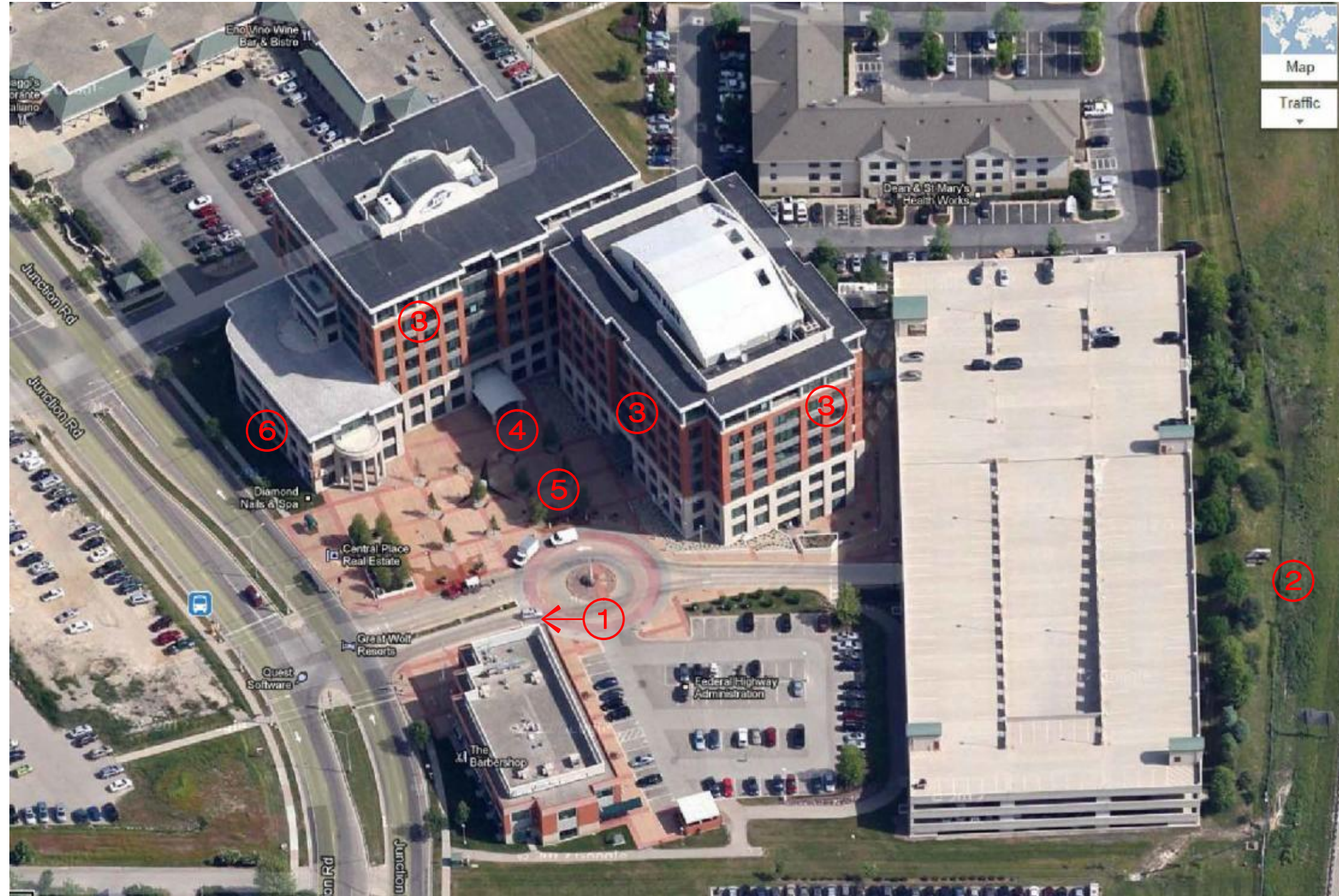


CAUTION: FIBER OPTICS IN THIS AREA

U.S.H. 12 / 14

PLAN NOTES

- ① DIRECTIONAL MONUMENT
- ② HIGHWAY MONUMENT
- ③ BUILDING SIGNAGE
- ④ CANOPY ACCENT SIGNAGE
- ⑤ KIOSKS
- ⑥ ENTRY SIGNAGE



BI VIEW FROM THE SOUTH
500

N.T.S.

PLAN NOTES

- ① DIRECTIONAL MONUMENT
- ② HIGHWAY MONUMENT
- ③ BUILDING SIGNAGE
- ④ CANOPY ACCENT SIGNAGE
- ⑤ KIOSKS
- ⑥ ENTRY SIGNAGE

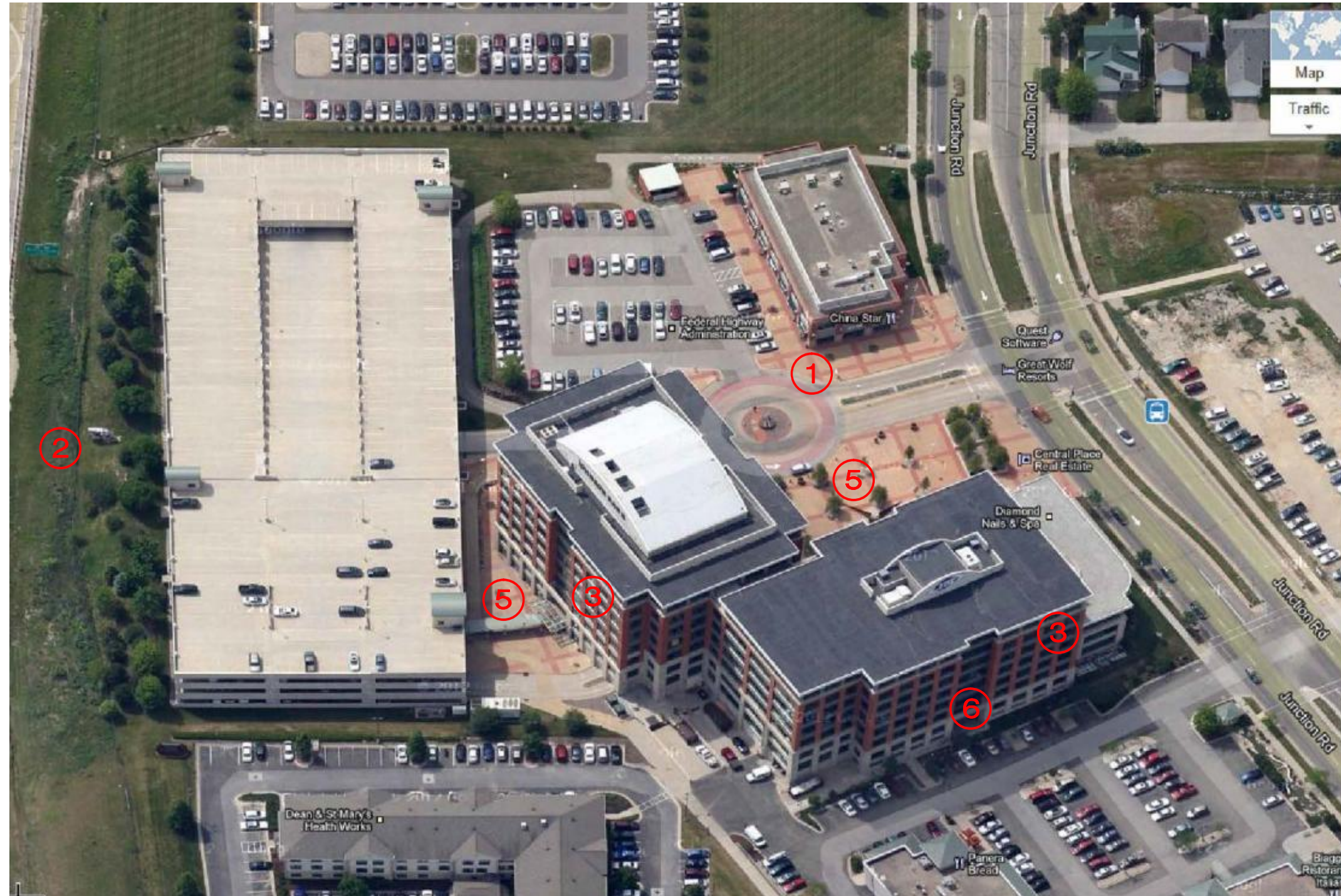


BI VIEW FROM THE EAST
501

N.T.S.

PLAN NOTES

- ① DIRECTIONAL MONUMENT
- ② HIGHWAY MONUMENT
- ③ BUILDING SIGNAGE
- ④ CANOPY ACCENT SIGNAGE
- ⑤ KIOSKS
- ⑥ ENTRY SIGNAGE



BI 502 VIEW FROM THE NORTH

N.T.S.

PLAN NOTES

- ① DIRECTIONAL MONUMENT
- ② HIGHWAY MONUMENT
- ③ BUILDING SIGNAGE
- ④ CANOPY ACCENT SIGNAGE
- ⑤ KIOSKS
- ⑥ ENTRY SIGNAGE



BI VIEW FROM THE WEST
503

N.T.S.



1 DIRECTIONAL MONUMENT SIGN

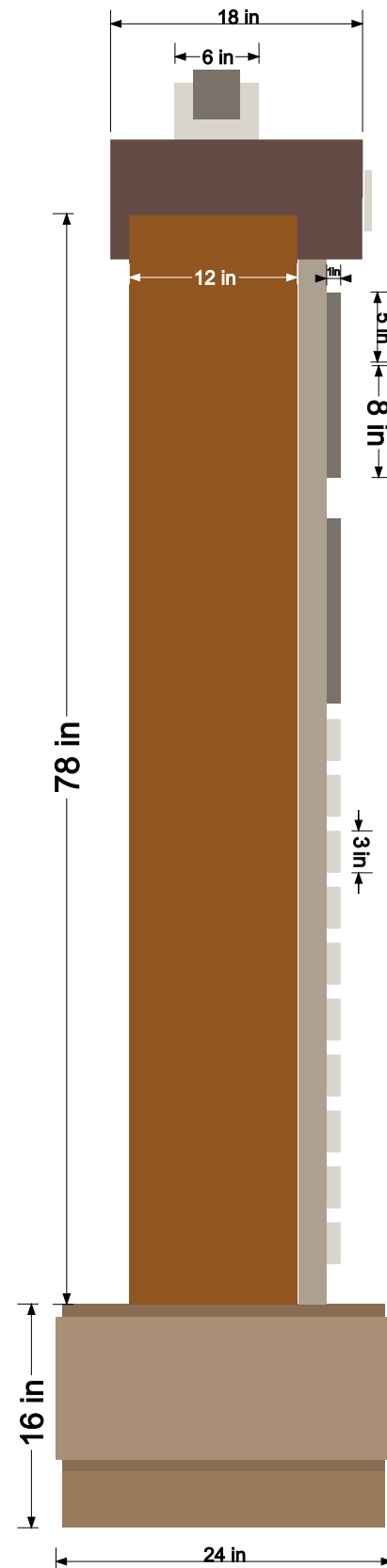




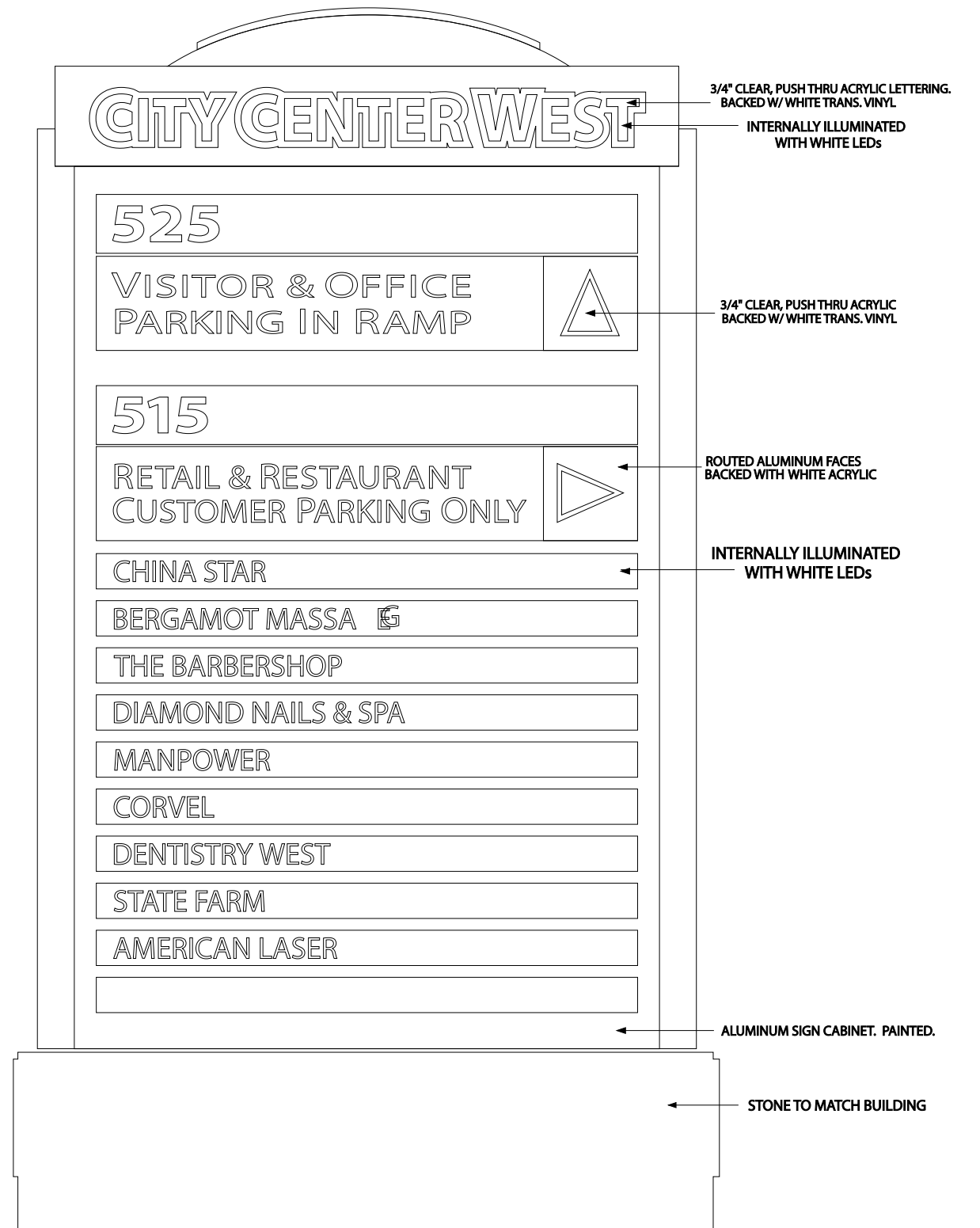
1 DIRECTIONAL MONUMENT SIGN SPECIFICATIONS



FRONT



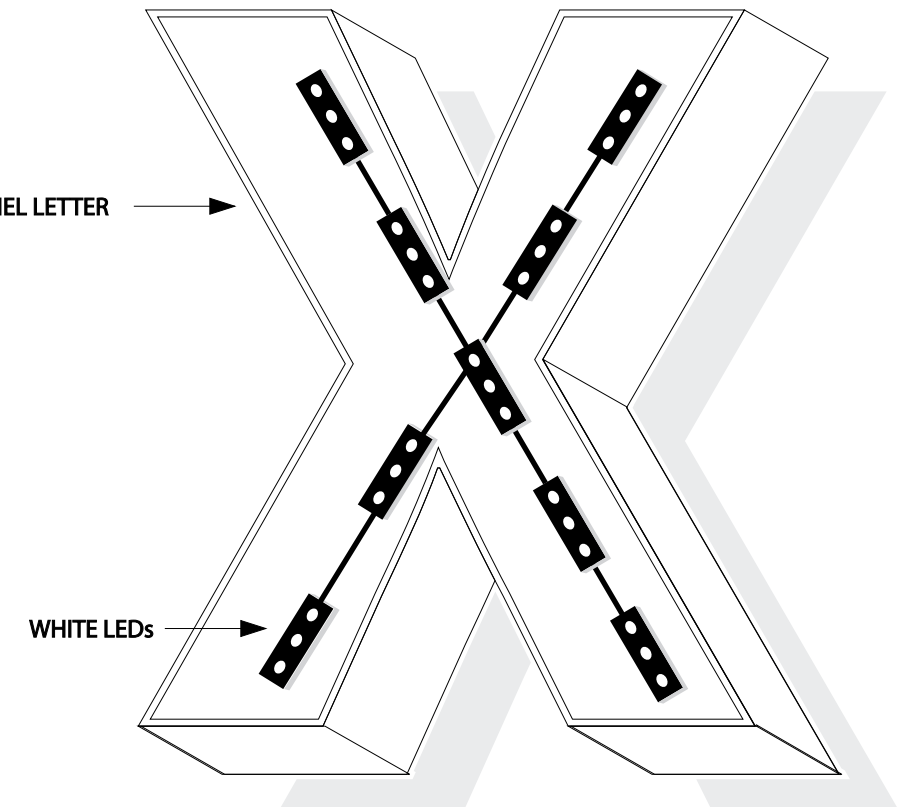
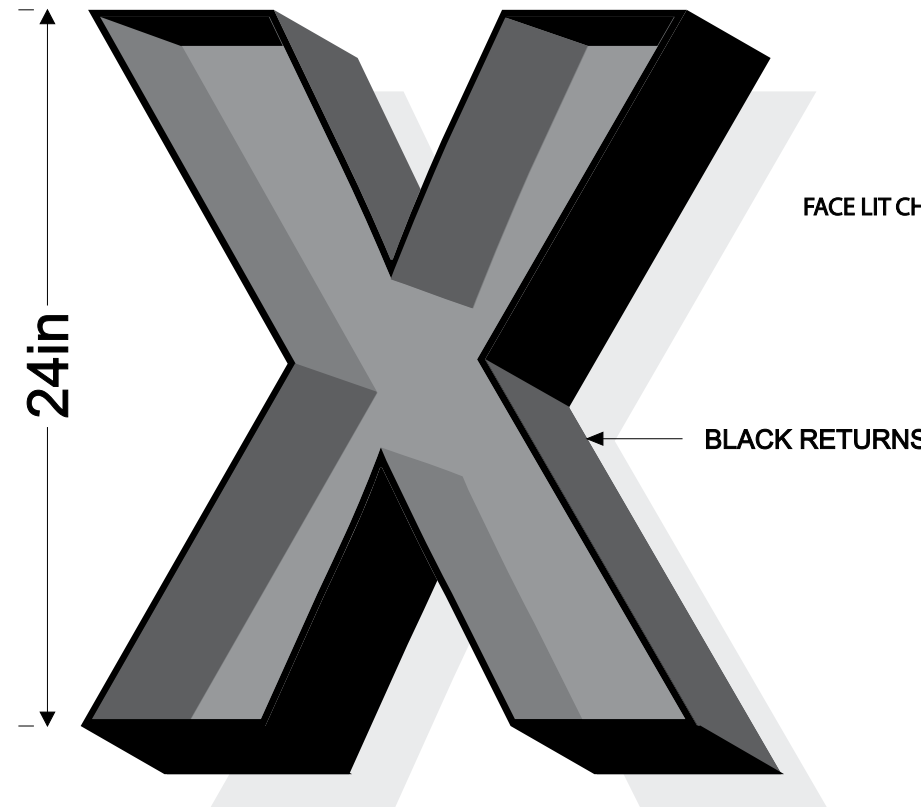
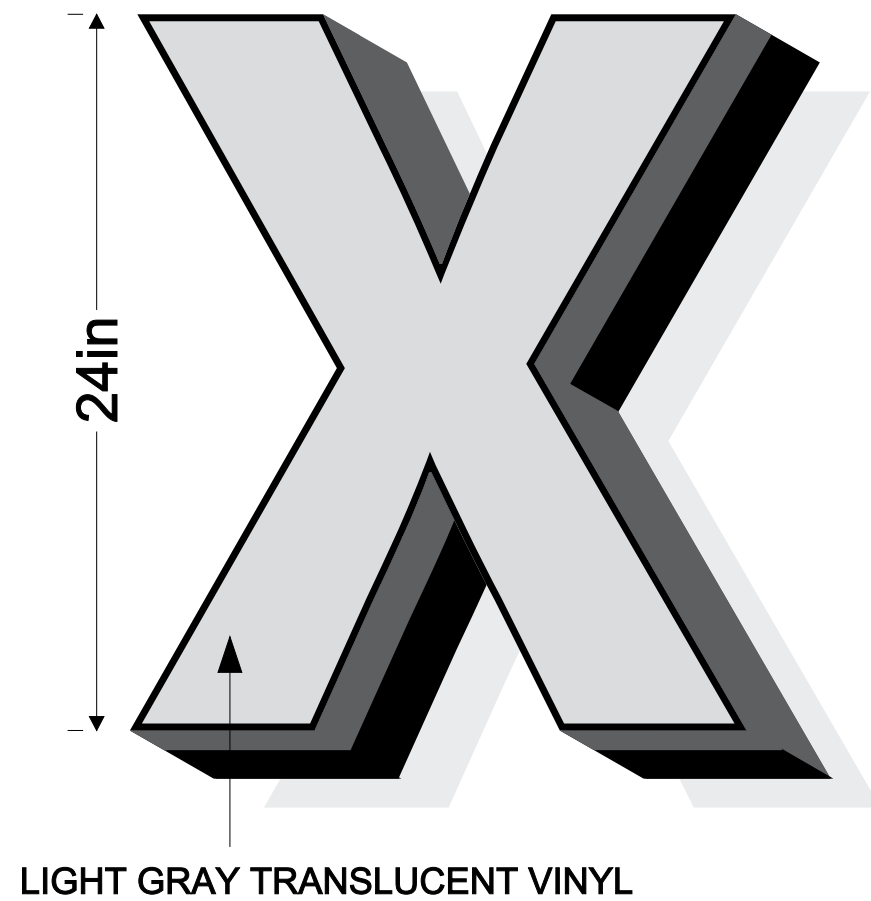
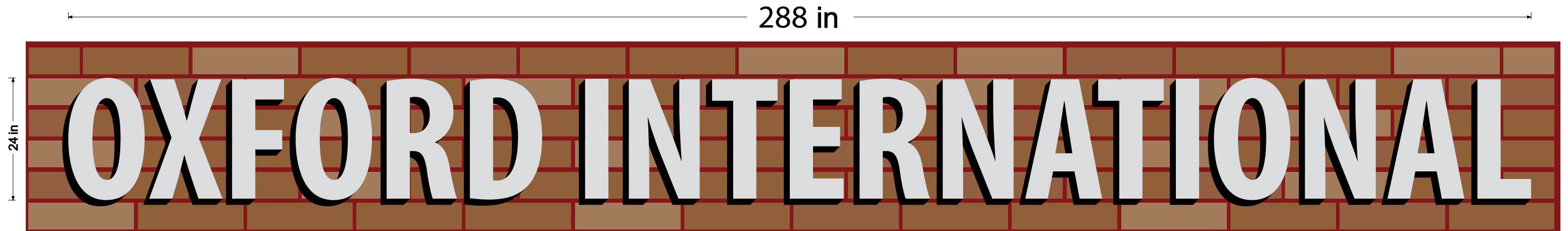
SIDE







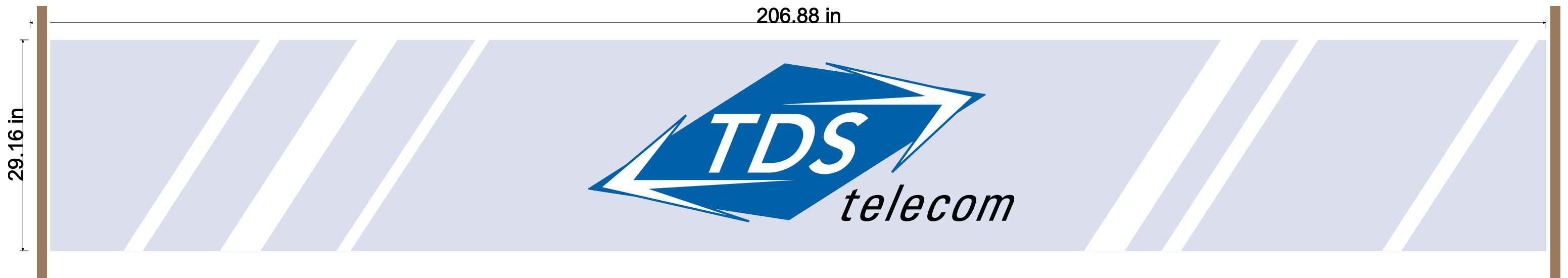
3 BUILDING SIGNAGE SPECIFICATIONS







④ CANOPY ACCENT SIGNAGE SPECIFICATIONS



29"X207"X1/2" GLASS W/ POLISHED EDGES.
MOUNTED TO PILLARS ON STEEL BRACKETS.



5 KIOSK SIGNAGE



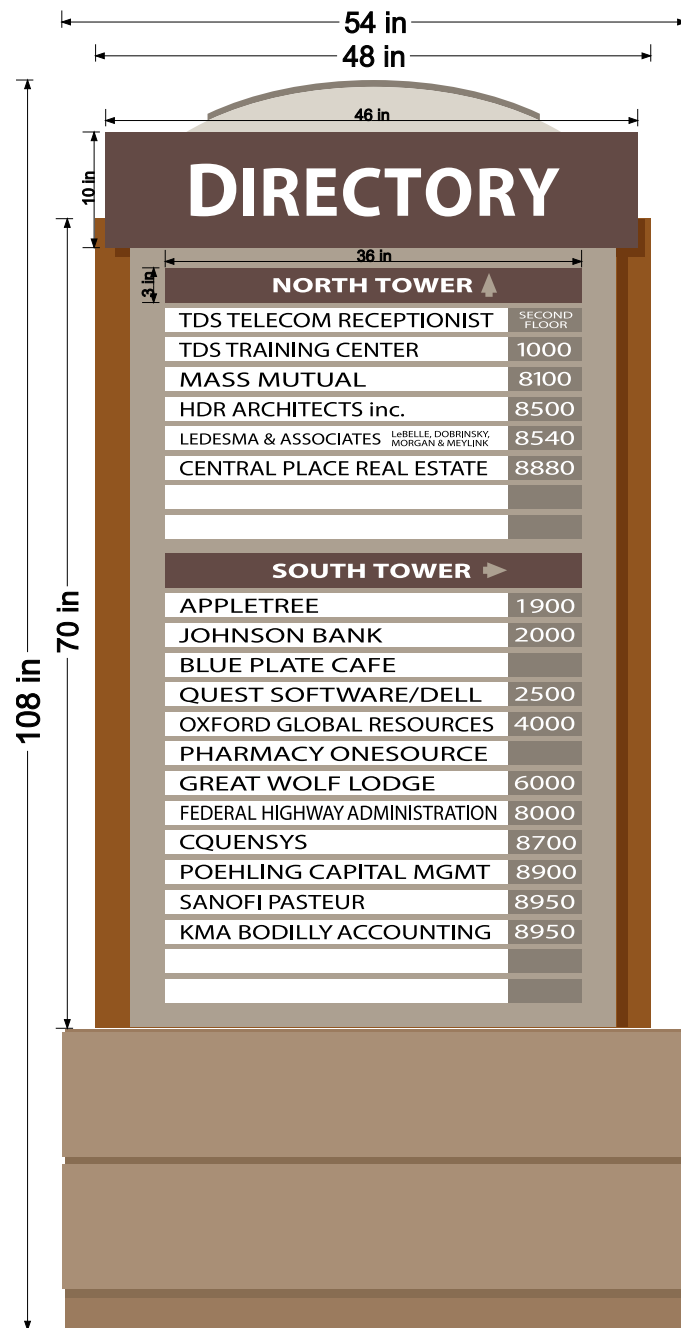
PATIO ENTRANCE/NORTH AND SOUTH TOWERS



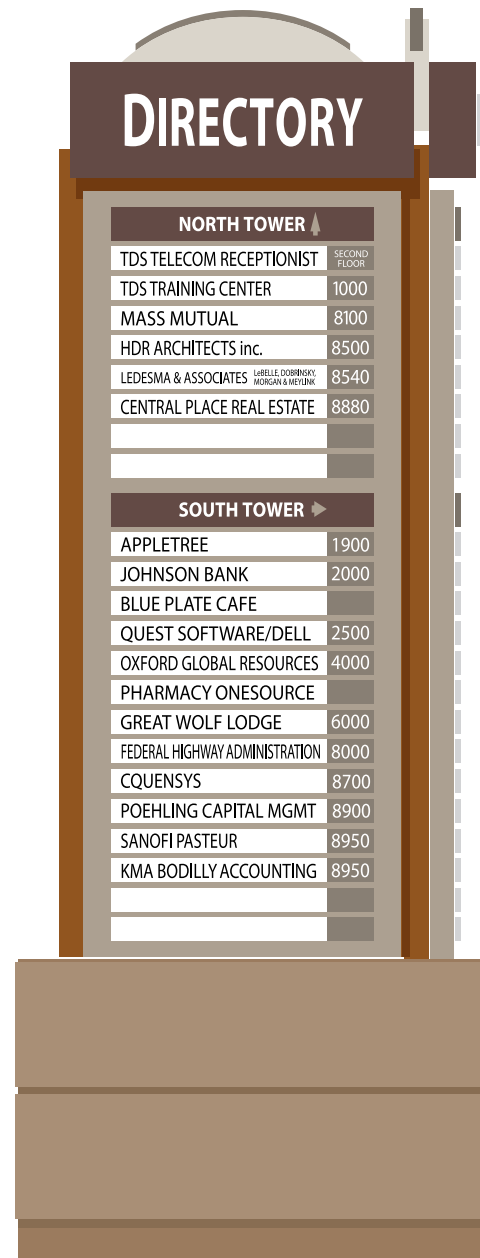
ENTRANCE FROM PARKING RAMP/SOUTH TOWER



5 KIOSK SIGNAGE SPECIFICATIONS



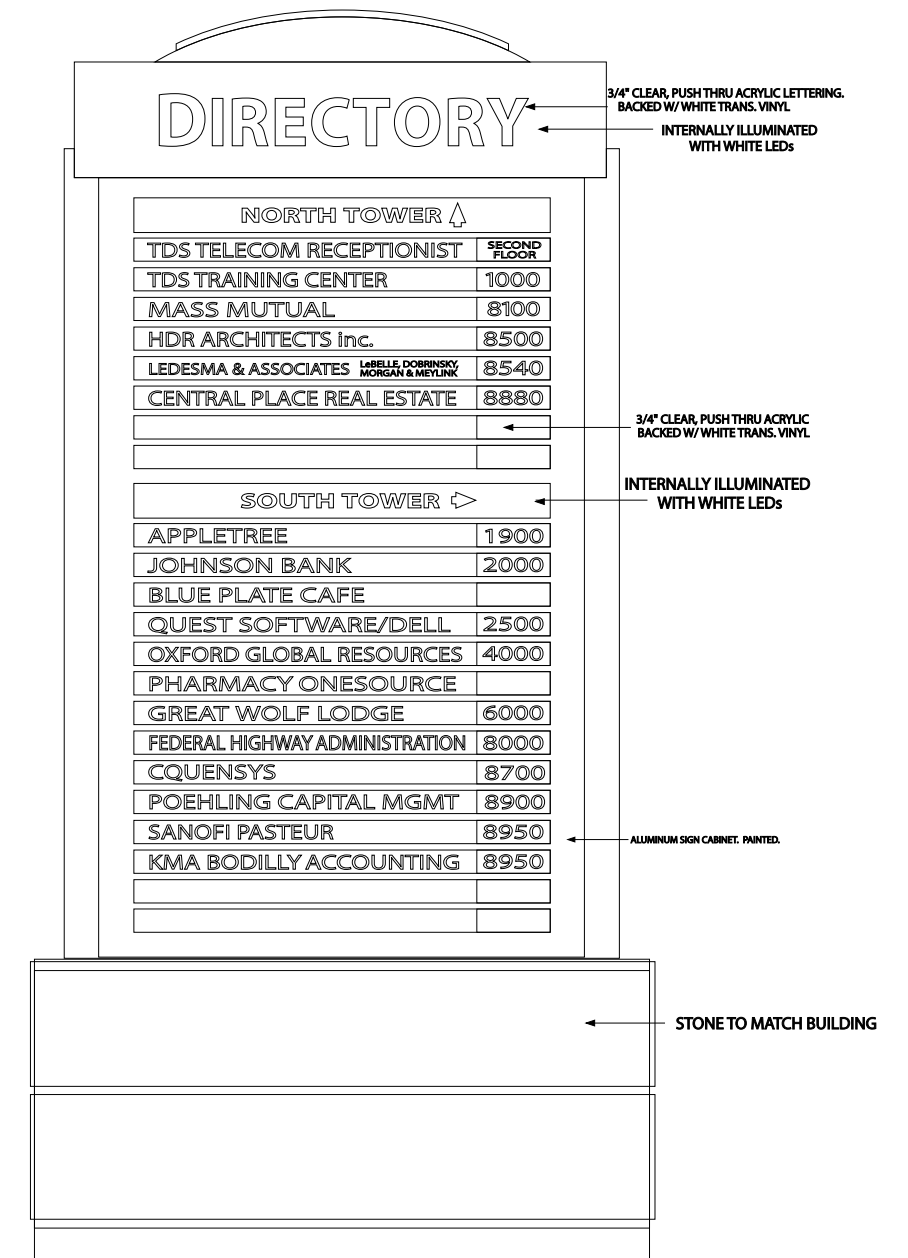
FRONT



SIDE



AERIAL





6 BUILDING SIGNAGE



16 in
150.8 in
EXAMPLE SIGN

