



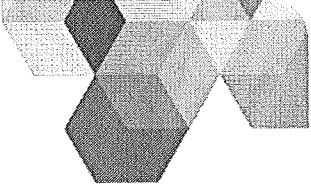
MADISON METROPOLITAN SCHOOL DISTRICT





Investing in Madison's future


Excellence  
**Belonging** Creativity  
Racial Equity & Social Justice  
**Voice** FOCUS

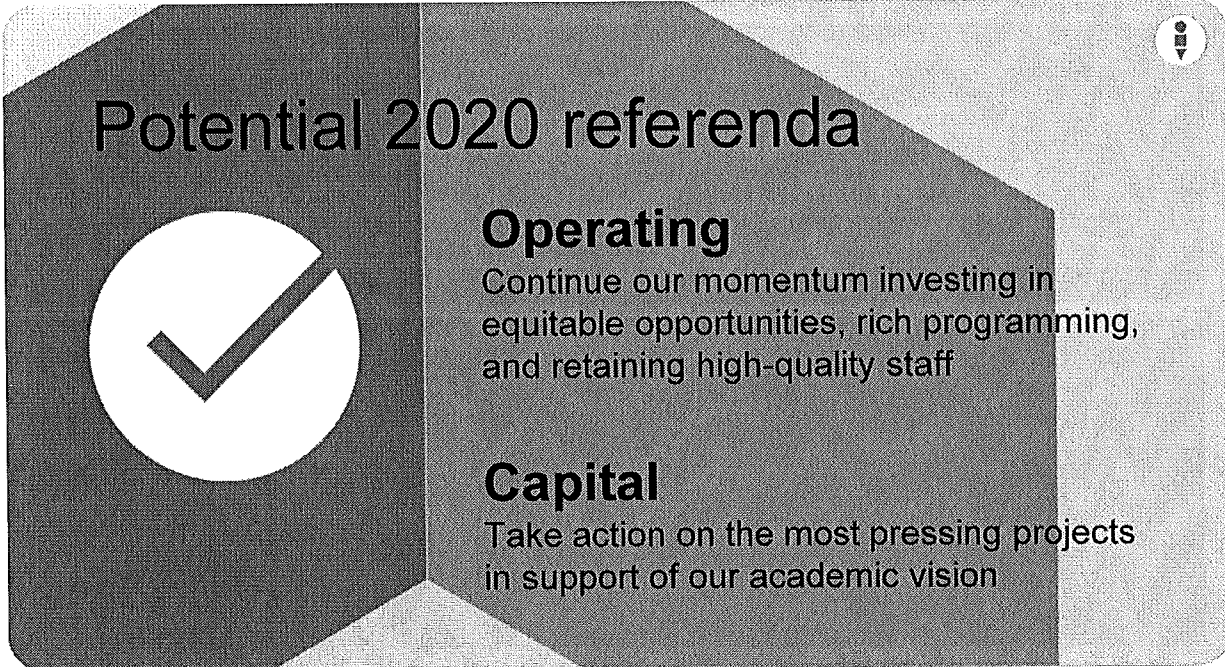




  
**Almost all**  
elementary schools improved in literacy and math, and 12 schools exceeded goals

  
**Steady progress**  
in half of middle schools

  
**All four**  
comprehensive high schools continue to see progress on GPA, a strong predictor of future success, as well as the 4-year graduation rate.



**Potential 2020 referenda**

**Operating**  
Continue our momentum investing in equitable opportunities, rich programming, and retaining high-quality staff

**Capital**  
Take action on the most pressing projects in support of our academic vision

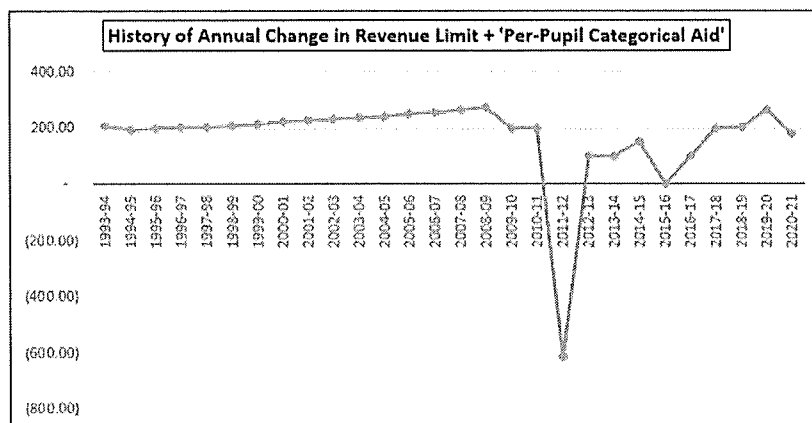
## Why an operating referendum question?



### State 10-year pattern of underfunding K-12 education

- State law revenue limit increases **not tied to cost of inflation**.
- State equalization aid continues to fall between 10% and 15% each year, with **local taxpayers funding the difference**.
- State programs, including vouchers and independent charters, have **constrained MMSD revenue**.

## Public education funding has been unstable for 10+ years



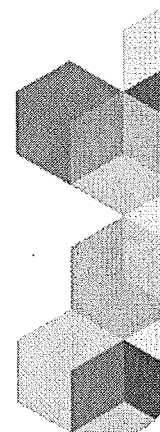
## Maintaining our positive academic momentum



**MMSD estimates current state funding model for public education will lead to \$30M in budget cuts over the next 3 years.**

An **operating referendum** to exceed revenue limits would allow us to:

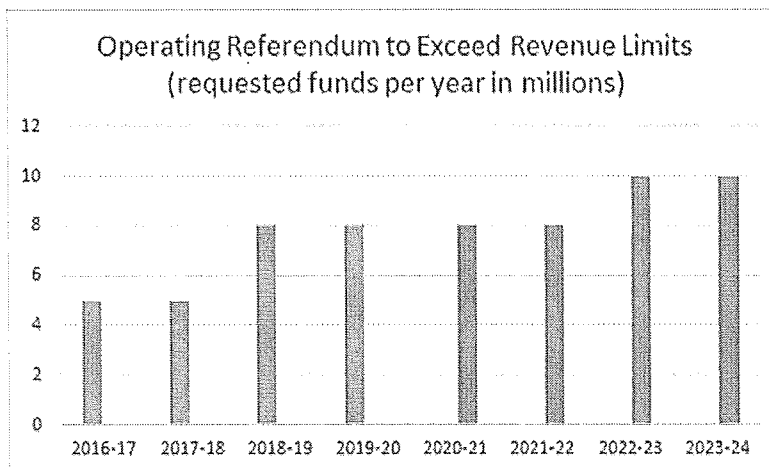
- Provide a variety of student programming in arts, music, science/technology, athletics, and more
- Adhere to the local class size policy
- Attract and retain high-quality teachers
- Invest in strategic equity projects like our Grow Your Own and historically accurate and culturally relevant curriculum



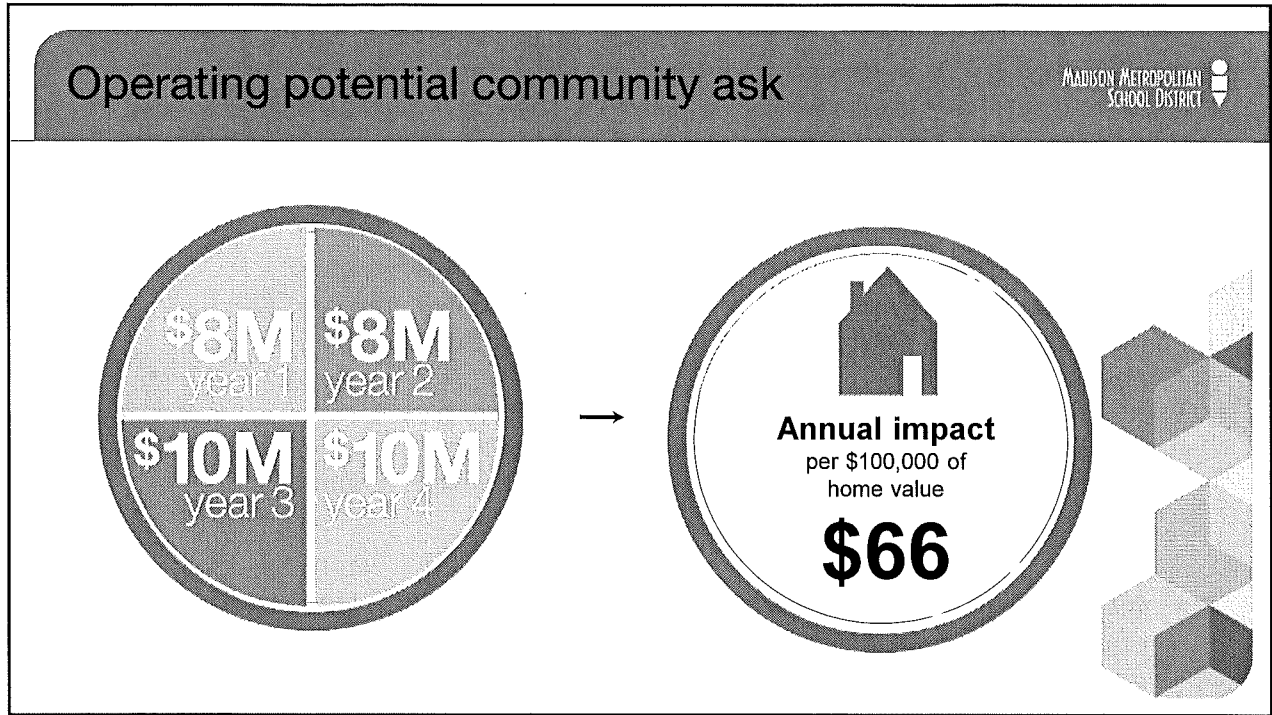
## Budget deficits of \$30M over next 3 years predicted



**Local resources would help stabilize budget and maintain academic momentum while continuing disciplined budget process.**



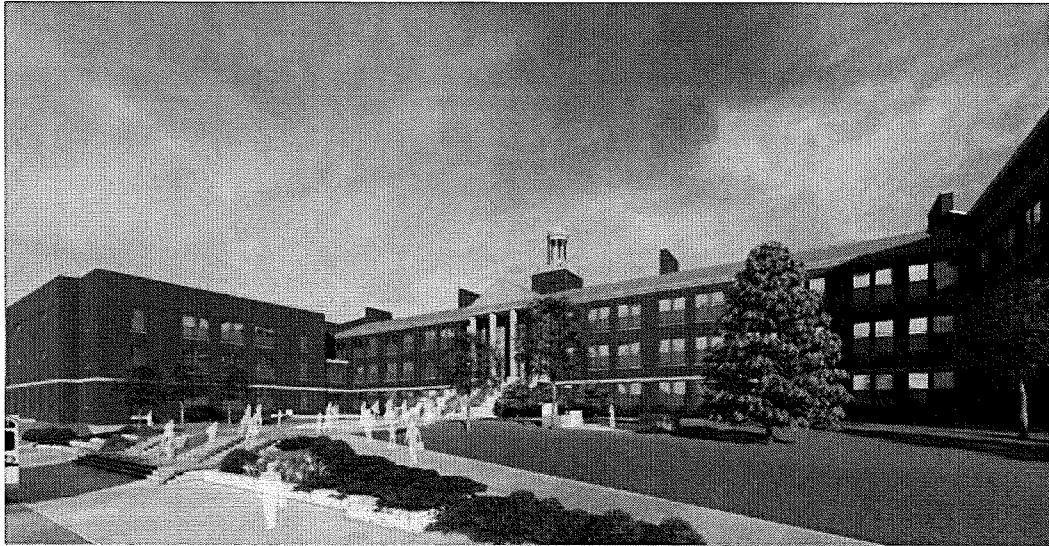




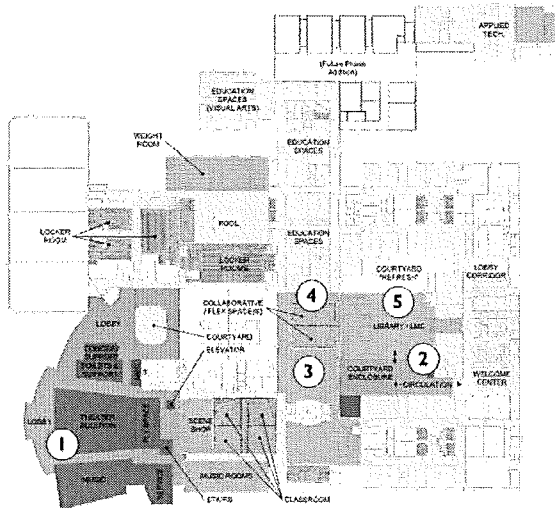
renovating **reimagining**  
stabilizing investing in  
program neighborhood  
locations school sites  
**twenty-first century learning**  
Future **Academic**  
Ready **Momentum**



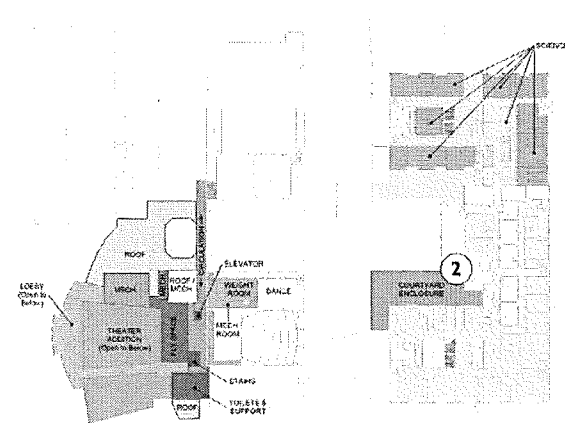
# West HS - Historic Ash St. Entrance



# Memorial HS - Additions and Improvements

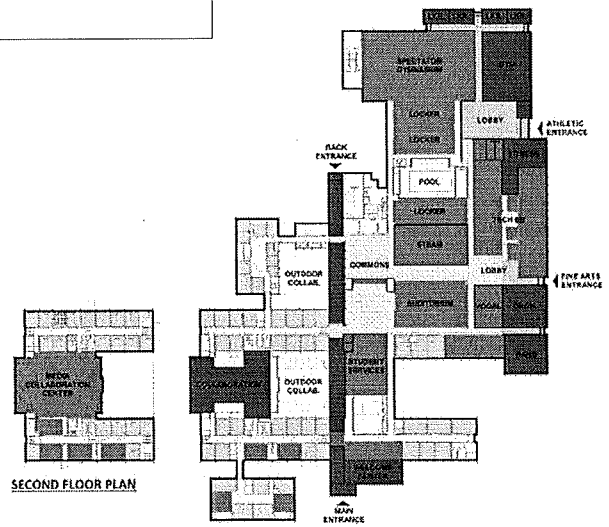
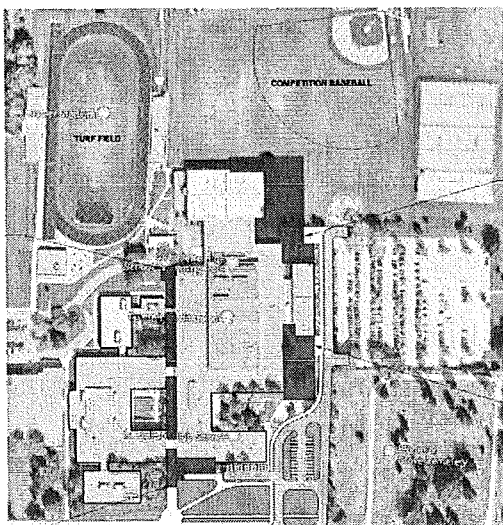
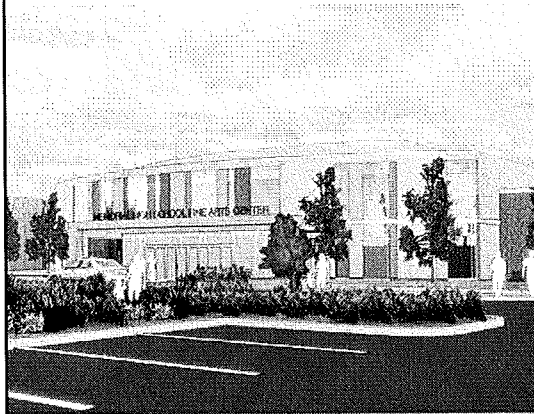


FIRST FLOOR PLAN

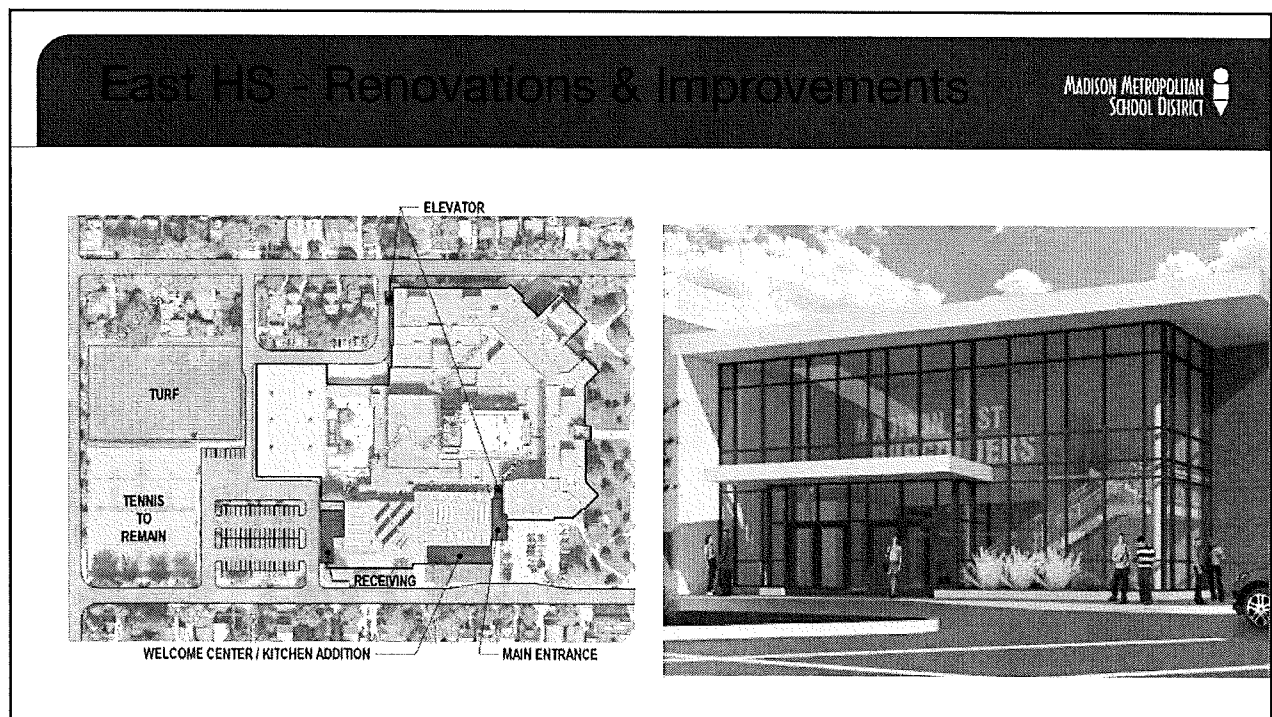
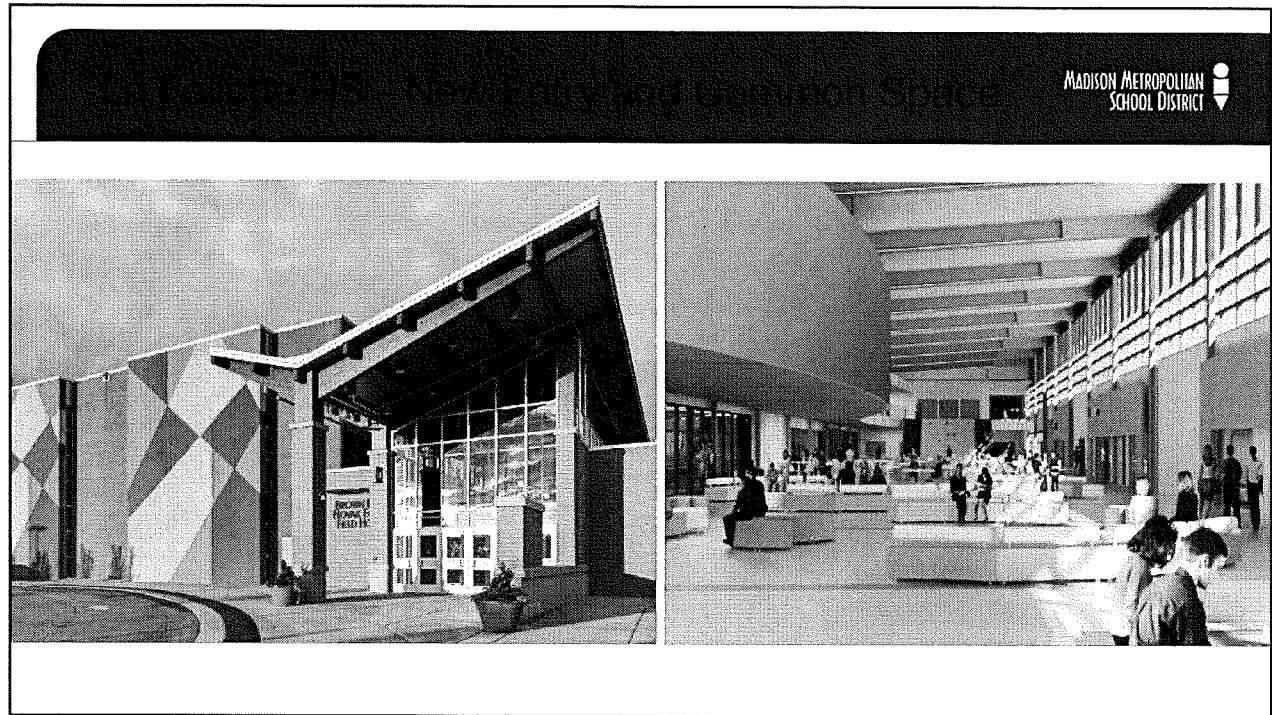


SECOND FLOOR PLAN

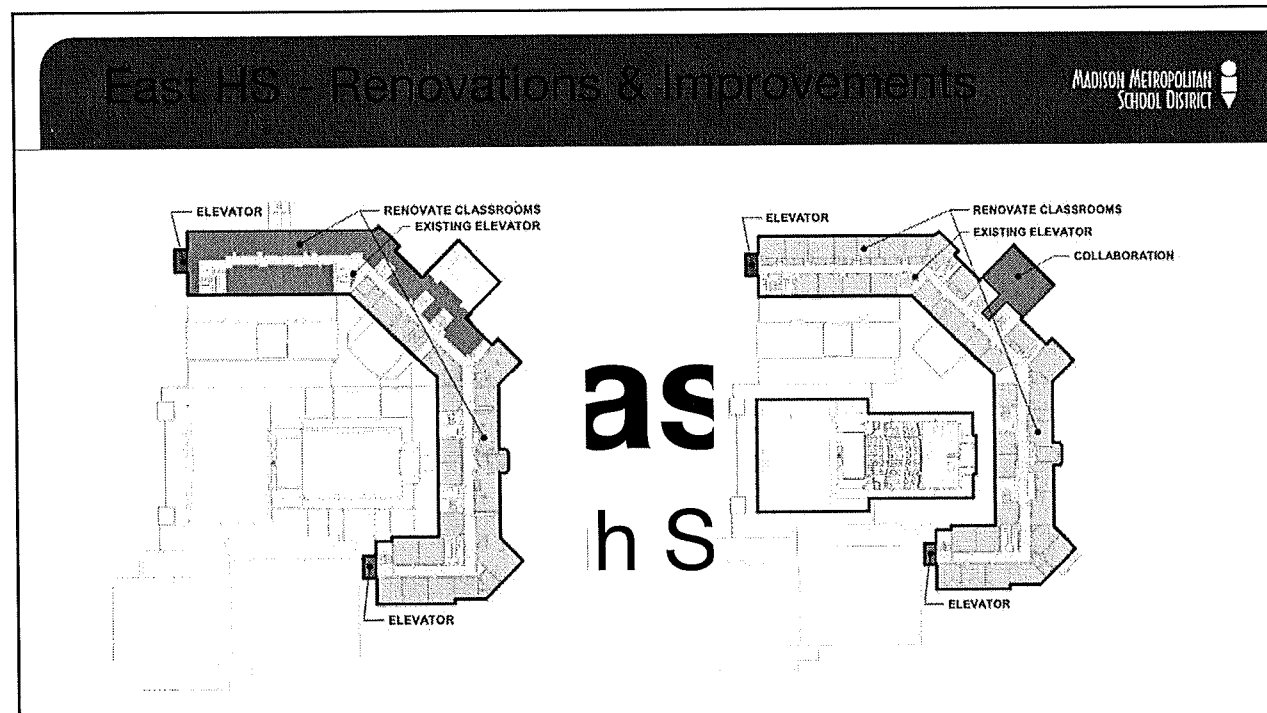
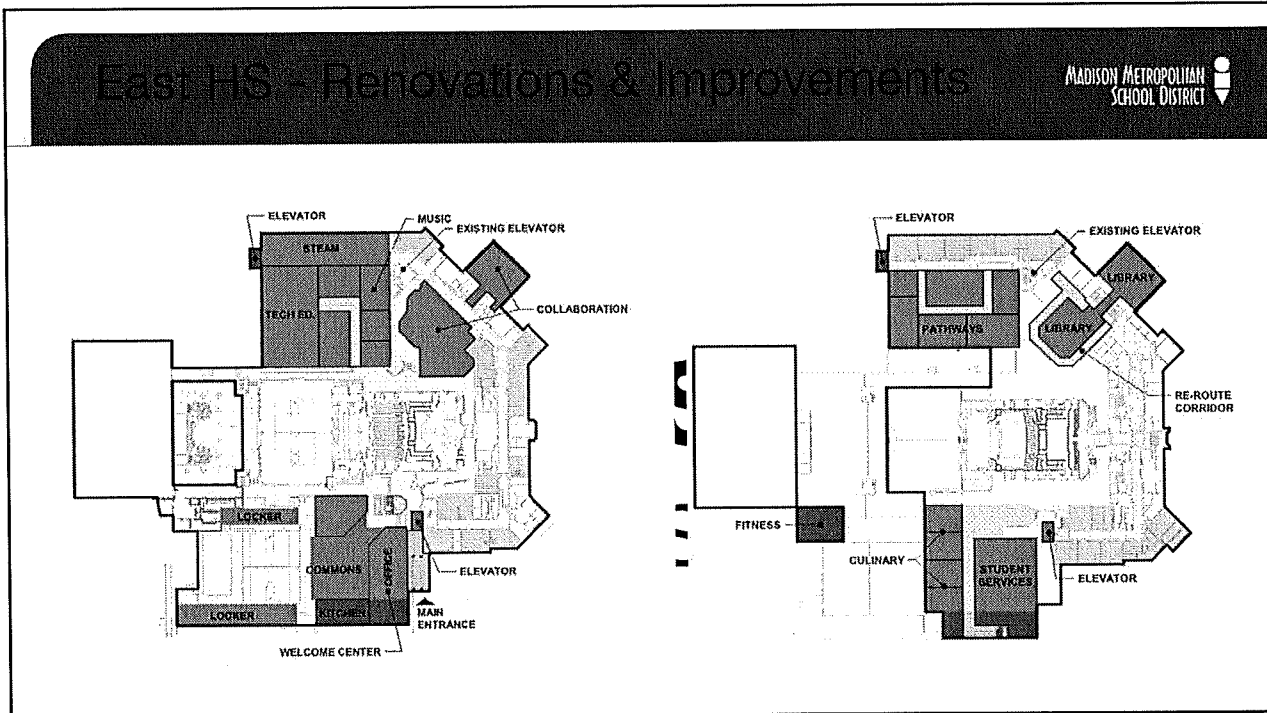
# Memorial - Fine Arts Center and Common Spaces



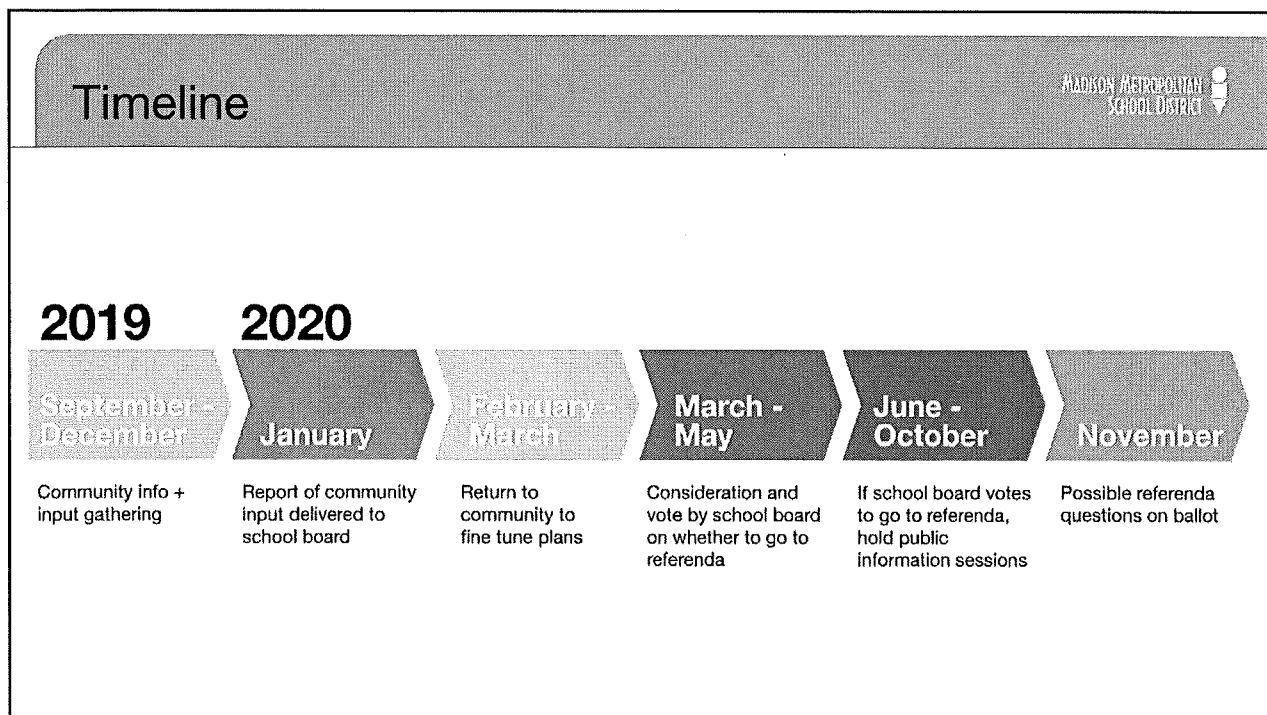


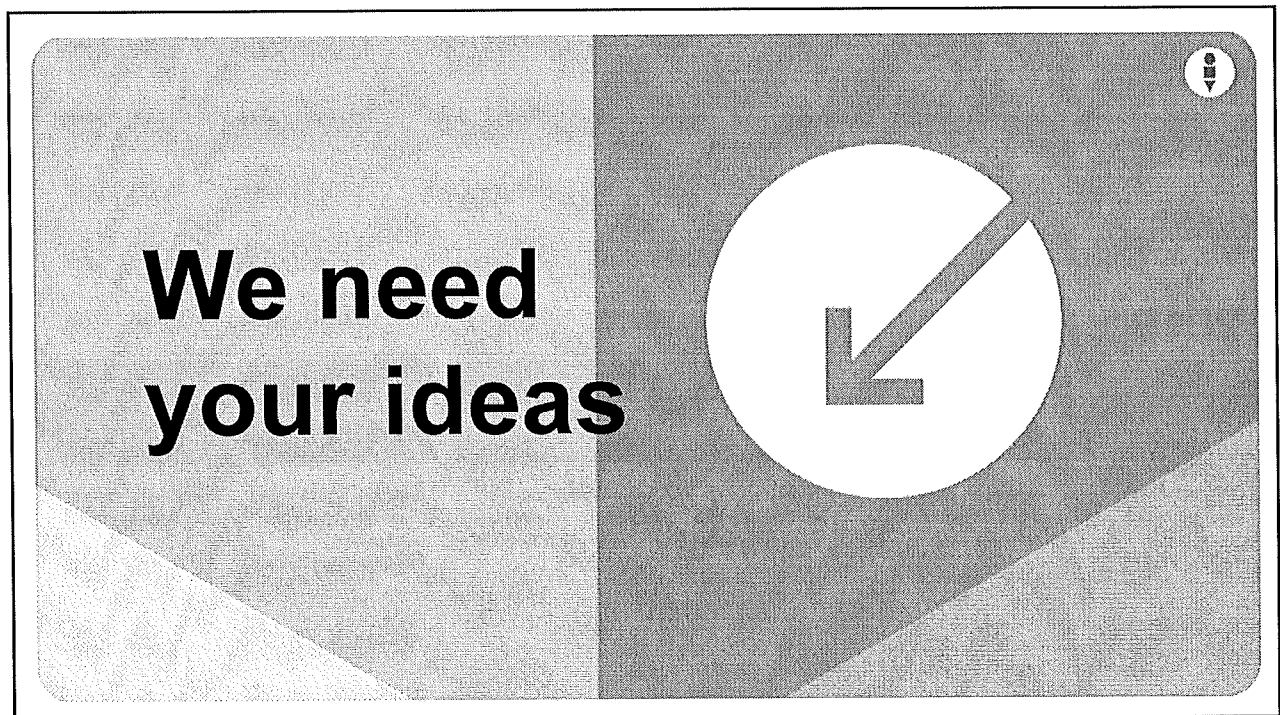
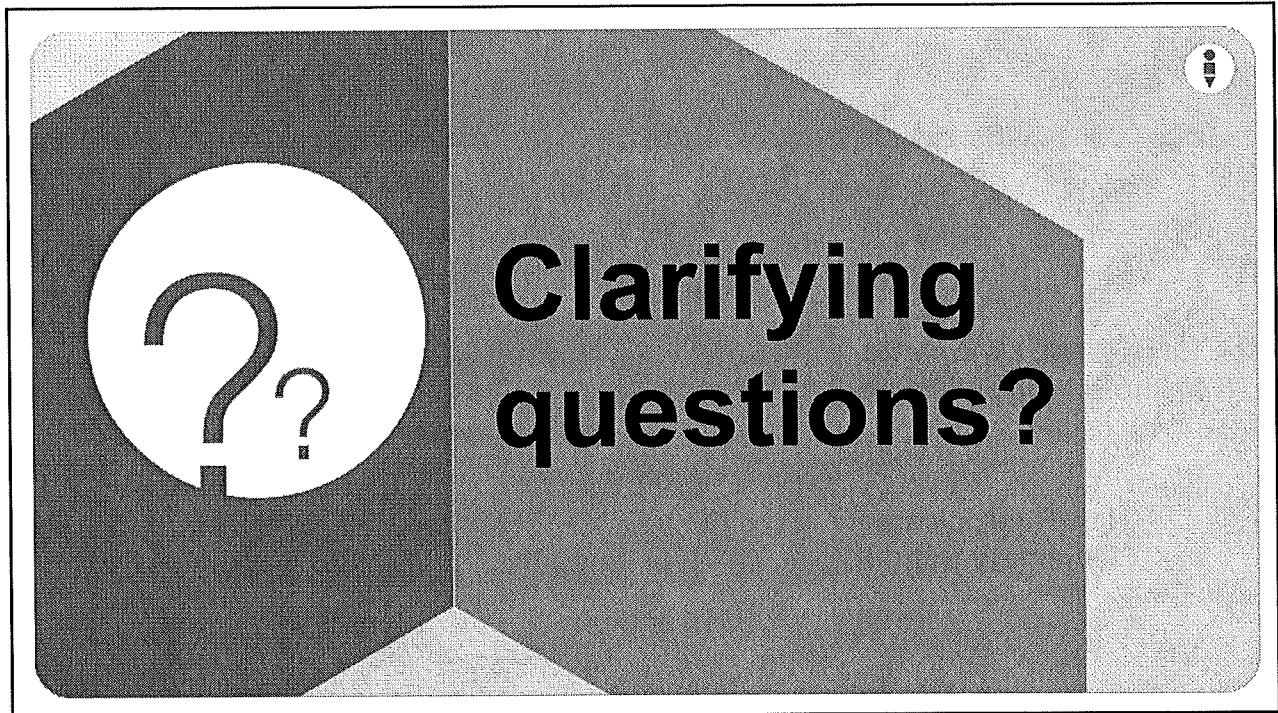






| Future Ready Facilities potential community ask  |                             |   | MADISON METROPOLITAN SCHOOL DISTRICT |
|--|-----------------------------|---|--------------------------------------|
|  | Future Ready Facilities     | Annual impact per \$100,000 of home value |                                      |
| East, West, La Follette, & Memorial High Schools | \$70 million per school     | \$61                                      |                                      |
| Capital High                                     | <b>\$6 million</b>          | <b>\$1</b>                                |                                      |
| New Rimrock area Elementary School               | \$25 million - \$30 million | \$7                                       |                                      |
| <b>Total</b>                                     | <b>\$315 million</b>        | <b>\$69</b>                               |                                      |





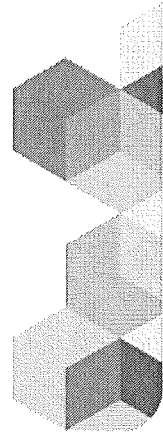
## Feedback



What do you like about the referendum plan/proposal? (i.e., what should we make sure to keep or retain in the referendum plan/proposal?)

What concerns, if any, do you have about the referendum plan/proposal (e.g. potential roadblocks, unintended consequences)?

What additional feedback do you have?



**Thank you**







# Investing in the future

## Transforming space, transforming student experience

**The school board is considering two referenda questions for the community to vote on in 2020 – one for facilities and one for operating expenses.**

### A facilities referendum would include:

- Significant renovations that would transform learning environments in our four main high schools, where we can impact a third of our students and every attendance area. **\$70M per high school**
- Moving our Capital High Westside students out of an over-capacity leased strip mall site and our Capital High Eastside students out of borrowed space inside Lapham Elementary School and into a permanent home in a school building we own, Hoyt School. **\$6M**
- Exploring the possibility of building a new elementary school in the Rimrock area to give underserved students and families a much-needed school in their neighborhood. **\$25-30M**

Madison's students and families have choices. They have hopes and expectations that their teachers are some of the most sought-after in the country. That the facilities they will spend the next 12 years of their lives in will offer welcoming, safe, innovative, comfortable environments in which to learn.

Our families see new schools being built in the surrounding suburbs made for modern, 21st century learning. Meanwhile,

**Madison  
hasn't made  
a large-scale  
reinvestment in  
high schools in  
50 years.**



### Why this is important

We have identified a need to bring our school buildings into the 21st century with modern, flexible, classrooms that support multiple learning styles. Safe spaces that are well-lit, inviting, accessible, and climate-controlled and that foster engagement, relationship-building, and positive climate and culture. Buildings that better reflect the **value we place on Madison's growing minds and future citizens, leaders, and workforce.** Madison has an opportunity to impact students in every attendance area, and to modernize these buildings for the community's use.

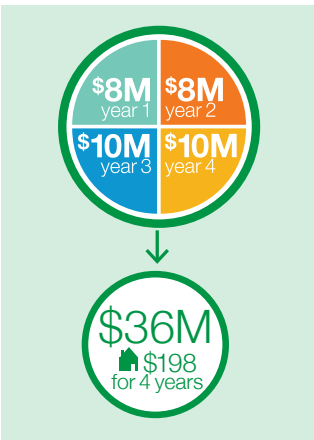
We have an opportunity to strategically address structural equity concerns through a new Rimrock area school and by moving Capital High students to Hoyt School.



# Future Ready

## An operating referendum would allow MMSD to:

- Provide a variety of student programming in arts, music, science/technology, athletics, and more.
- Invest in the district's strategic equity projects that are aligned to the MMSD Strategic Framework.
- Adhere to the local class size policy.
- Attract and retain high-quality teachers.



### Why this is important

While 2019-20 saw a slight increase in revenue limit funding from the state for the first time in four years, this state budget largely continues a ten year pattern of underfunding K-12 education.

MMSD's budget forecasts \$30M in reductions over the next three budget cycles that would impact class size and student programming. A balanced budgeting approach will require both resource reallocation and strategies to increase revenue.

## How we identified projects to address in a facilities referendum

We have many facility-related needs, so strategy is key. Priorities for facilities include a commitment to maintaining our comprehensive high schools as well as solving our most pressing equity needs.

- ✓ Our instructional and facilities teams worked together referencing feedback from staff, students, families, and the community collected over three years.
- ✓ We then took initial project proposals to students and staff and specific communities to get their input.
- ✓ We engaged in several first-round focus groups and surveys to get the community's initial reactions, and made revisions based on feedback.

## We need your ideas

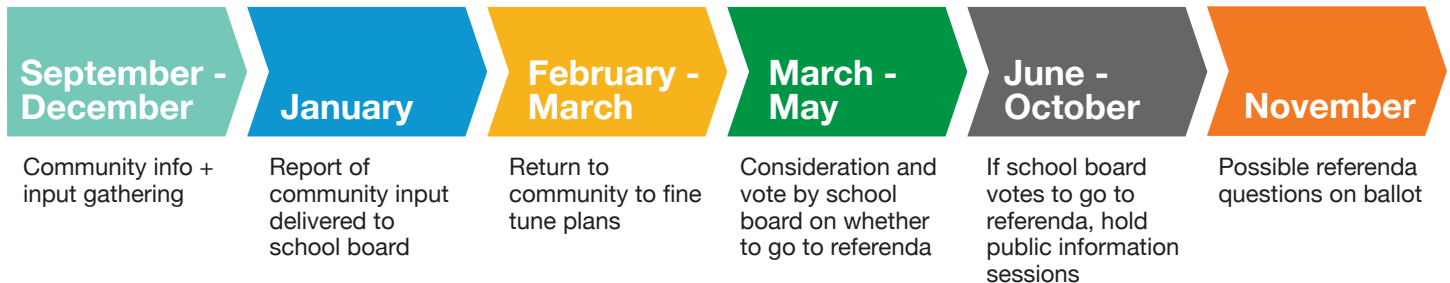
Through mid-December 2019, we will be seeking your ideas and feedback through community meetings, focus groups, online surveys, and more. We want to know if you agree that these are the right priorities to take action on next to support our students' future.

We will then bring the plans to the school board, along with a full report of feedback, for consideration in January 2020.

The board plans to make a decision by May 2020 about whether to add the referenda to the ballot in 2020.

### 2019

### 2020



The possibility of this investment for our students would be transformational, and would allow students to learn, lead, and create change for the future.



# Capital High School

## Investing in our scholars' bright futures

Capital High students are vibrant young people who have proven they can thrive in a smaller, close-knit learning community that supports their interests and goals and that values respect for self and others.

### A school building to learn in

Every student should be able to learn in a school building. We believe that it is time to invest in a facility for our students who need an alternative to our comprehensive high schools.

Currently, Capital High's 160 students are split between two buildings. Seventy-five students receive their education in a leased strip mall site with a 60-person capacity on the far West side of Madison. Capital High Eastside students borrow space on the third floor of 4K-2 Lapham Elementary School.

### An opportunity for the community

Hoyt School, which currently houses our Madison School and Community Recreation (MSCR) administrative offices and programming, is the only available building that MMSD owns that has the potential to meet Capital High's academic vision for its students.

We believe that renovating Hoyt for twenty-first century learning will not only better serve our students in need of an instructional space where they can flourish, but would also provide a valuable return on investment to the Hoyt neighborhood.

As a treasured community space, a renovated Hoyt School would continue to serve as a hub for families and students seeking rich, innovative programming opportunities in the evening and on weekends.

### Some areas in need of addressing

- Poor site grading, pitching toward building
- Roof and gutters are original construction
- Windows are single-pane, non-insulated
- Ramps in lower level are not ADA compliant
- Flooring is cracked throughout the building
- Settlement has occurred in east classrooms
- Casework not ADA compliant and chipping
- Poor ventilation
- Restrooms not ADA compliant



**We invite you to get to know our students. More than 80% are on track to graduate high school and 70% of our seniors have been accepted into a post-secondary school.** You have an opportunity to help Capital High continue and grow its success, make a lasting impact on Madison for generations, and help develop a richer, more inclusive community.



# What could Hoyt School's future look like?

Imagine a community-based school where students, families, and neighbors know one another, understand and support each other, and work together to continue to strengthen community ties. Envision a flexible and multi-use space built specifically for a new, innovative instructional design model as well as community partners.

Picture a Welcome Center for community members and families, large common areas including an auditorium, gymnasium, cafeteria, industrial kitchen, and onsite childcare.

This is the kind of space that we see for our Capital High students. A space that reflects their voice and choice, with dedicated indoor and outdoor spaces for electives, clubs, and career exploration.

**But this vision is incomplete. We need your ideas as we imagine and design the Hoyt building for the future.** You have a voice in how we serve Capital High students and the community for generations to come.

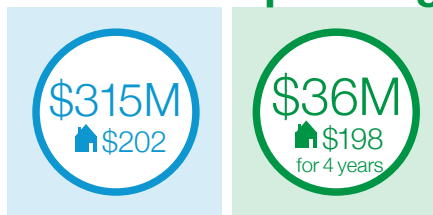
## Draft proposed improvements include:

- All classrooms refreshed
- New flooring
- New ceilings
- All walls repainted
- New windows
- New doors and hardware
- New secure entry
- New science classroom
- New culinary classroom
- Early childhood classrooms
- New art classroom
- All restrooms renovated
- New elevator
- New all-gender restroom on each floor
- Improved technology
- Improved heating and cooling system
- New lighting
- Parking lot paving, sidewalks, hardscapes
- Fire protection
- Accessibility upgrades



The school board is considering two potential referenda for the community to vote on in 2020. This project would potentially be included in a facilities referendum.

## Facilities Operating



Annual impact per average Madison home value



# La Follette High School

## Spaces that reflect scholars' potential and lift up Lancer PRIDE

La Follette High School, located on Madison's southeast side, was built in 1962 and received additions in 1965 and 1969. In every classroom, you'll find students who embody the tenets of Lancer PRIDE – personal responsibility, respect, integrity, determination, and excellence.

Students are eager to help lead La Follette into a future that includes bright, spacious areas that support multiple learning styles, collaboration, and a positive school climate. They are ready to explore Science, Technology, Engineering, the Arts, and Mathematics (STEAM) in twenty-first century labs and makerspaces.

### Identifying priorities

In spring 2019, students and staff were excited to help identify some potential renovation ideas. Through conversations with them, in addition to site visits and a review of the building's age and condition, we have identified what we believe are the priorities at La Follette that could be taken on with a 2020 facilities referendum.

### Proposed improvements

Our focus would be on major reinvestments in classroom spaces and creating additional state-of-the-art labs and STEAM space. Instructional spaces would be upgraded to allow for flexible arrangements that support multiple learning styles. This could include connections between classrooms and breakout spaces along hallways to encourage impromptu collaborative moments during passing periods or over lunch.

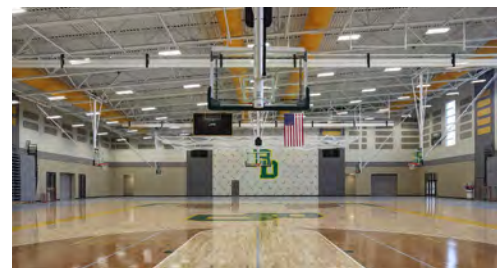
Another key recommendation is to creatively redesign the open-air area underneath the existing second-floor Library Media Center known as "The Pit," which currently has accessibility and supervision challenges. We would transform "The Pit" into a well-lit instructional space aligned with experiential and career learning.

The current draft proposal also includes a solution to alleviate hallway congestion by expanding the main corridor of the building, the C-Wing, to accommodate an entire student body of 1600 students converging during passing time.

Pertaining to building entrance and security, we would add on to the current Welcome Center to make the main entrance more welcoming, accessible, and secure.

We would also move our currently decentralized Student Services offices to one location near the commons area. This would allow students to more easily access services (special education, mental health, occupational therapy, to name a few) and would help staff work more collaboratively to support students.

All of this work would be aligned to our commitment to environmental sustainability.





## \$70M Recommendations

### Educational Spaces

- Renovate existing classrooms to accommodate larger classrooms and collaboration space.
- Redesign the existing area known as “The Pit” to create additional classrooms.
- Significantly upgrade existing STEAM lab and technical education spaces and create more STEAM spaces by renovating the existing gym.
- Renovate the existing auditorium, build an addition for more band and orchestra rooms, and add a new fine arts entrance.
- Centralize Student Services offices near the current commons area so staff can collaboratively support students.

### Building Functionality

- Create a new Welcome Center with a building addition.
- With funding set aside for environmental sustainability projects, install a 100 kilowatt solar array in addition to new windows, LED lighting, and other energy-efficient measures in alignment with MMSD’s commitment to renewable energy.
- Expand corridors, courtyards, and other common areas to address congestion and create a more serene and positive school climate.

### Climate and Culture

Items in the report on the facility’s condition that were graded as a B or lower would be addressed. When students feel comfortable, healthy, and supported by their environment, they engage more in school in a positive way. These include:

- Mechanical system overhaul: A new, sustainable-energy geothermal heating system and whole-school air conditioning would provide students with a comfortable and climate-controlled environment in which to learn.
- Electrical system overhaul, with service upgrades to the building and generator system.
- Spacious, renovated restrooms would support student health, hygiene, privacy, and comfort.

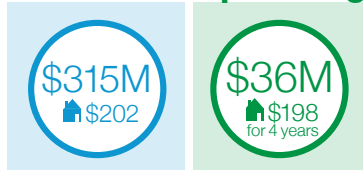
### Community and Athletic Spaces

- Upgrade facilities used by the community for meetings, gatherings, adult sports leagues, youth sports teams, and other groups.
- Transform the existing fieldhouse into a new spectator gym. An addition adjacent to the fieldhouse would provide a new entrance and lobby space.
- A new track layout would incorporate an expanded turf infield, increasing opportunities for students and the community to use the space, including physical education, band, athletics, Madison School & Community Recreation (MSCR), and other community users.

The school board is considering two potential referenda for the community to vote on in 2020.

This project would potentially be included in a facilities referendum.

### Facilities Operating



Annual impact per average Madison home value



# East High School

## Updated learning environments that boost climate and culture

Built in 1922, East High School is a unique, historic building beloved by the eastside community. As a neighborhood gathering place, East is a source of pride. The building's facade and architecture hold beauty, but as a facility meant to engage young minds, spark innovation, and deliver our vision of student-centered instructional design, East needs significant renovations.

### Identifying priorities

Through site visits, a review of the building's age and condition, input from our instructional team and feedback from students, staff and the East community, we have identified what we believe are the priorities at East that could be addressed with a 2020 facilities referendum.

### Proposed improvements

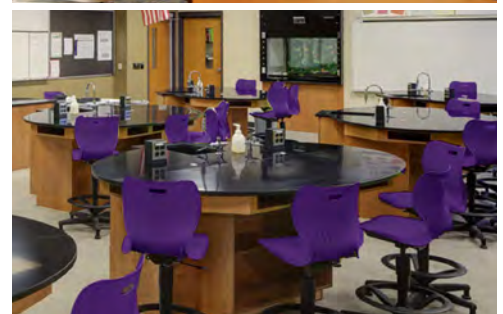
Our focus would be on completing much-needed updates, including full renovations of labs, STEAM, and hands-on learning and exploration spaces, a major redesign of the commons area known as "the mall," extensive improvements to keep the building warm in winter and the addition of whole-school air conditioning.

We also propose creating an easily identifiable and welcoming main entrance on 4th St., where students, families, and visitors would access a secure entry and a relocated welcome center, main office, and centralized Student Services. This would include installing a new elevator for accessibility. An addition above the proposed new main office would create space for experiential learning opportunities.

The proposal also calls for relocating the cramped music practice spaces closer to the theater and repurposing that area for classrooms. It would also update and combine the split Library Media Center into one LMC.

Community use and athletic facilities would also be upgraded. Proposed projects include renovating the gymnasium into a new spectator gym with bleacher seating for 2000, adding a second story to incorporate a fitness room, and updating locker rooms.

All of this work would be aligned to our commitment to environmental sustainability.



# \$70M Recommendations

## Educational Spaces

- Existing classrooms would be renovated to be better utilized for larger classrooms and collaboration space.
- STEAM Lab and Technical Education
  - Significant upgrades to the existing spaces to improve functionality and aesthetics.
  - Renovation of the existing space to accommodate relocation of the music rooms. There would also be an addition of a stair/elevator for vertical access to additional experiential learning spaces.
  - Fine Arts music rooms would relocate to the newly renovated former tech ed portion of the building.
- The existing libraries would be renovated and combined into one space by taking over a portion of the existing corridor.
- An addition above the proposed new office and existing music rooms would provide instructional space for experiential learning opportunities.
- Student Services would be relocated to a renovated space in the former music department area of the building.

## Building Functionality

- Main office entry would include an addition and renovation to bring all of the office and welcome center into one location that is more accessible to the public. This would include an addition to help identify the main entrance.
- The Commons/Kitchen area would get an addition and renovation to the existing cafeteria space.
- With funding set aside for environmental sustainability projects at East, we propose installing a 100 kilowatt solar array in addition to new windows, LED lighting, and other energy-efficient measures in alignment with MMSD's commitment to renewable energy.

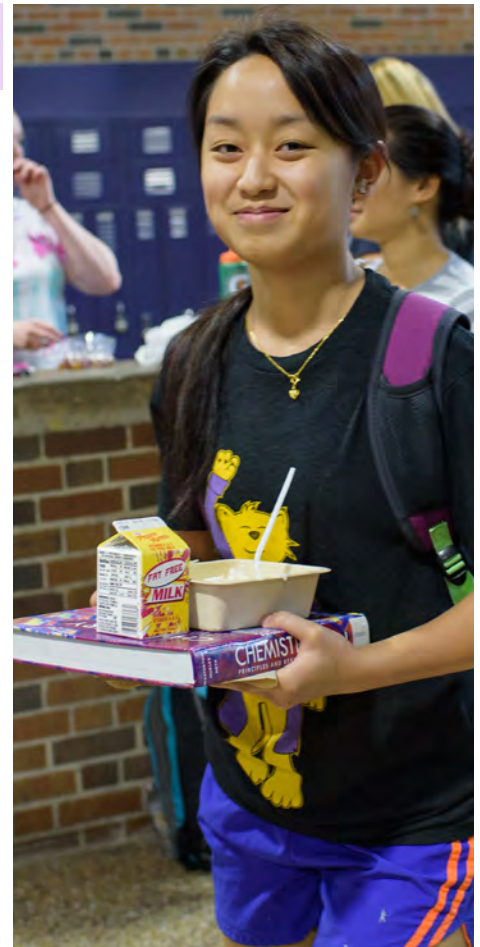
## Climate and Culture

Items in the report on the facility's condition that were graded as a B or lower would be addressed. When students feel comfortable, healthy, and supported by their environment, they engage more in school in a positive way. These include:

- Mechanical system overhaul: A new geothermal heating system and air conditioning throughout the entire building would provide students with a comfortable and climate-controlled environment in which to learn.
- Spacious renovated restrooms would support student health, hygiene, privacy, and comfort.

## Community and Athletic Spaces

- Facilities used by the community for meetings, gatherings, adult sports leagues, youth sports teams, and other groups would be upgraded.
- Gymnasium/athletic entry – currently a project in construction – would provide a new entry to the fieldhouse, which would also be renovated to be the new spectator gym.
- A second story would be added to the gymnasium/athletic entry addition to incorporate a fitness room.



“The evidence is unambiguous – the school building impacts student health, thinking, and performance.”

– Harvard School of Public Health

The school board is considering two potential referenda for the community to vote on in 2020. This project would potentially be included in a facilities referendum.

## Facilities Operating





# West High School

## Room for Regents to grow into tomorrow's thriving citizens and leaders.

Built in 1930, Madison West High School is located a short distance from Madison's city center. While the school received additions in the late 1960s and '70s, a growing student population has resulted in a building that is currently over capacity.

West must wisely and creatively use its existing space to ensure a stimulating and supportive learning environment for future generations of Regents.

West scholars are eager for the opportunity to learn in innovative, flexible, student-centered environments that support multiple learning needs, collaboration, and creativity.

### Identifying priorities

Through site visits, a review of the building's age and condition, input from our instructional team, and feedback from students and staff, we have identified what we believe are the priorities at West that could be addressed with a 2020 facilities referendum.

### Proposed improvements

An expansion on the Ash Street side of the building that honors the historic architecture and improves accessibility would **increase access to instructional space** and include a **new Welcome Center** designed as a welcoming space that would improve traffic flow and security

A **major reinvestment in classroom spaces** would allow for learning environments that are student-centered, collaborative, and exploratory.

The addition of two elevators would **make all spaces accessible**.

The Library Media Center (LMC) would be designed for **increased technology and greater flexibility in the use of space** and our existing auditorium would be upgraded to meet current performance standards.

An **upgrade of athletic and community facilities**, including a new pool, women's locker rooms, and field turf on high-use fields would create opportunities for new and better usage and partnerships with our community.

The installation of new **thermally efficient windows and energy-saving window-shading and light-control solutions**, along with all other renovations and upgrades, would be aligned to our commitment to environmental sustainability.





### Educational Spaces

- Create twelve (12) additional classrooms, urgently needed for an already over-capacity student body.
- Significantly renovate existing classrooms, labs, and STEAM spaces to create stimulating learning and experimentation spaces.
- Redesign the Library Media Center (LMC) to be the school and technology hub, with flexible spaces for groups and individuals and improved lighting.
- Renovate the theater, rebranding the space and bringing it to a performance-quality venue, adding an elevator to address accessibility issues for theater and music rooms.
- Enlarge and upgrade fine arts/music spaces.

### Building Functionality

- Added space and improved traffic flow in common areas to ease capacity/overcrowding issues.
- Renovate Welcome Center, reorganize and more effectively place student support areas, renovate building for accessibility improvements, add elevators.
- Upgrade safety and alert systems (fire alarms, fire suppression, PAs).
- Develop community use spaces for increased partnership opportunities.
- Refresh courtyard to create more inviting outdoor spaces.
- Additional parking for more efficient and increased access to the school building.

### Climate and Culture

Items in the report on the facility’s condition that were graded as a B or lower would be addressed. When students feel comfortable, healthy, and supported by their environment, they engage more in school in a positive way. These include:

- Upgrade mechanical systems so they are energy-efficient, climate-controlled, and reliable
- Improve building exterior including masonry repairs, windows, and roof membrane
- Refresh indoor finishes of floors, ceilings, and walls
- Update all restrooms to support student health, hygiene, privacy, and comfort.
- Site improvements would include a landscaping plan, signage, asphalt repair, sidewalks and stairs, stormwater control, retaining walls and additional parking (as practical)

### Community and Athletic Spaces

- Upgrade facilities used by the community for meetings, gatherings, adult sports leagues, youth sports teams, and other groups.
- Relocate the pool and create four additional classrooms in the existing pool’s location.
- Improve practice spaces, upgraded baseball field to include a new backstop and dugouts, replace all gym bleachers, consolidate weight room and add outdoor equipment storage space.
- Update locker rooms, including the addition of all-gender changing rooms.
- Refresh competition spaces to include upgrades to field turf and retaining wall.

The school board is considering two potential referenda for the community to vote on in 2020.

This project would potentially be included in a facilities referendum.

Annual impact per average Madison home value

### Facilities Operating





# Rimrock Area

**The Rimrock area** (south of the beltline and east of South Park St./ Highway 14) **is home to more than 400 MMSD students who attend schools approximately 6 miles from home with bus rides as long as 42 minutes.**

- Approximately 260 of these students attend Frank Allis Elementary School on Madison's far East side at 4201 Buckeye Rd.
- Approximately 150 of these students attend Nuestro Mundo Community School, a dual-language public charter school that operates out of a facility leased from the Monona Grove School District at 902 Nichols Rd. in Monona.

We believe that a priority of a facilities referendum is to explore the idea of building a new elementary school in the Rimrock area to address structural equity concerns and better serve students and families living there.

**Eighty-one percent of MMSD students from the Rimrock area are from low-income households, 89% are students of color, and 50% are English Language Learners.**

We're looking toward actions that would benefit both Nuestro Mundo students and Frank Allis students.

Through October and November, we are meeting with both school communities and with the Rimrock area neighborhood to help us explore options:

- Moving Nuestro Mundo into a new building in the Rimrock area.
- Moving Allis Elementary School students into a new building in the Rimrock area, and moving Nuestro Mundo students into the Frank Allis building.
- Other options







## The future of Frank Allis Elementary School

Frank Allis Elementary School is home to approximately 450 four-year-old kindergarten through grade 5 students. Frank Allis has served students since it opened in 1917.

A new school was built in 1936. The school reached its 495-student capacity in 2014 and enrollment has since declined.

## A permanent home for Nuestro Mundo Community School

- Nuestro Mundo Community School is a dual-language public charter school that is part of the Madison Metropolitan School District. The school currently serves about 300 kindergarten-grade 5 students.
- Nuestro Mundo was originally placed as a strand model at Frank Allis Elementary School in 2004 and the strand model outgrew that location after several years of operation. In 2012, as a temporary solution, MMSD began leasing a facility from the Monona Grove School District at 902 Nichols Road. This was never meant to be a permanent home for Nuestro Mundo.
- The school has now outgrown the capacity of the current Monona location, limiting its ability to grow and meet the needs of the community. Additionally, the leased space costs MMSD's operational budget \$200,000 per year. It also continues to have operational challenges, including our inability to make needed investments to the building and its 27-year-old playground. MMSD has always envisioned Nuestro Mundo in a district-owned building within the City of Madison.

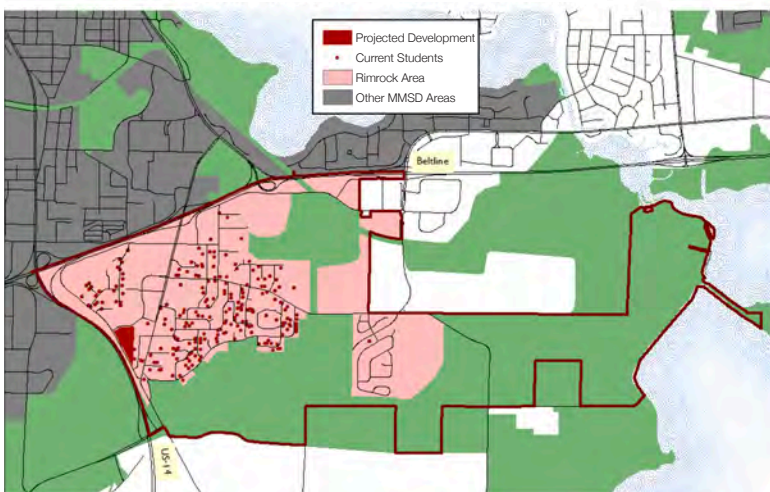
## Room to grow

What we've heard from Nuestro Mundo staff and families is that they would like to have a permanent home in a building with enough space and flexibility to allow the school to grow. They would like to explore the possibilities of incorporating four-year-old kindergarten and expanding to serve students through grade 8.

The community would like to see opportunities for more students to learn at Nuestro Mundo. Demand far exceeds capacity.

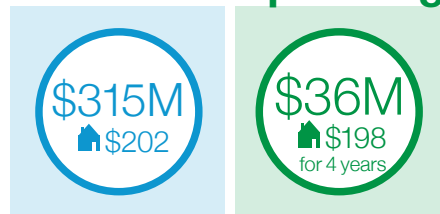
Based on the condition of the leased facility, our inability to update or expand it, and the desires of students, families, staff, and community members, we believe that now is the time to move Nuestro Mundo to a permanent MMSD-owned building.

Students and Projected Development in Rimrock area



The school board is considering two potential referenda for the community to vote on in 2020. This project would potentially be included in a facilities referendum.

### Facilities Operating



Annual impact per average Madison home value

# Memorial High School

## Transformed learning spaces that reflect and reinforce our strong Spartan Spirit and academic potential

James Madison Memorial High School, or ‘JMM,’ was built in 1965 and received additions in 1967 and 1970. At nearly 90% capacity, we need to maximize our current space and prepare for future growth (a projected 750 additional students by 2038).

Spartan scholars look forward to learning in modern, innovative environments that nurture their desire to be challenged and stimulated. As a school community, JMM values student-centered instruction that is dynamic and flexible, and instructional spaces that support this are key.

As the student body grows and continues to be a thriving, strong, and caring community, the school building will play a vital role in helping JMM to expand and flourish.

### Identifying priorities

Through site visits, a review of the building’s age and condition, input from our instructional team, and feedback from students and staff, we have identified what we believe are the priorities at Memorial that could be addressed with a 2020 facilities referendum.

### Proposed improvements

**Major renovations to instructional spaces, labs, and STEAM (Science, Technology, Engineering, the Arts, and Mathematics)** will create modern, collaborative, and flexible learning environments that support teachers in guiding student inquiry, critical thinking, and dialogue.

**A redesign of the performing arts area of the building** to include the creation of new art and music spaces that are sized appropriately for the curriculum and the construction of a **new theater** with expanded practice space.

**A redesign of the Library Media Center (LMC)** to increase technology capabilities and improve flexibility for use of space.

**An upgrade of community use and athletic facilities** would mean a complete renovation of Mansfield stadium, an upgrade to artificial turf for all athletic fields, all-gender changing areas, and a complete renovation of men’s and women’s locker rooms to address condition and accessibility.





### Educational Spaces

- Add six (6) classrooms to increase instructional space in preparation for the projected 750 additional students by 2038.
- Refresh finishes on floors, ceilings, and walls to brighten the learning environment in all classrooms and Library Media Center (LMC) and replace temporary wall spaces/classrooms.
- Renovate science labs, STEAM classrooms, and applied technology spaces.

### Building Functionality

- Renovate Welcome Center so that it is more inviting and secure.
- Consolidate office spaces and improve placement of student support areas.
- Provide spaces that facilitate community partners' use of space.
- Upgrade safety and alert systems (fire alarms, fire suppression, PAs).
- Add an elevator and make other accessibility upgrades.

### Climate and Culture

Items in the report on the facility's condition that were graded as a B or lower would be addressed. When students feel comfortable, healthy, and supported by their environment, they engage more in school in a positive way. These include:

- Upgrade mechanical systems so they are energy-efficient, climate-controlled, and reliable.
- Update all restrooms to support student health, hygiene, privacy, and comfort.
- Upgrade exterior and grounds, including building repairs, stormwater control, a landscaping plan, signage, asphalt repair, sidewalks and stairs, and parking lot improvements.

### Community and Athletic Spaces

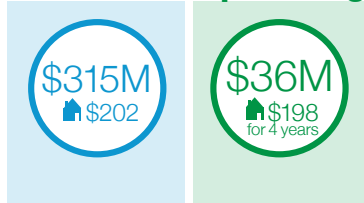
- Upgrade facilities used by the community for meetings, gatherings, adult sports leagues, youth sports teams, and other groups.
- Upgrade practice and competition fields, weight room, bleachers, track, athletic field, and renovate the pool.
- Upgrade locker rooms, including the addition of all-gender changing rooms.
- Renovate Mansfield Stadium to include a turf field, new running track, and other stadium and field areas.

The school board is considering two potential referenda for the community to vote on in 2020.

This project would potentially be included in a facilities referendum.

Annual impact per average Madison home value

### Facilities Operating





# We know your time is precious. Thank you for being here.

---

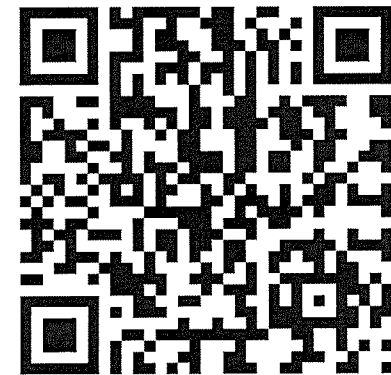
**We have one more ask:** Will you complete an online survey on the potential 2020 referenda?

This is an important data-gathering tool that will help the School Board understand the needs and priorities of the community.

The survey will officially launch in November, but we are hoping that you will take part in an early round, perhaps this week or next week.

To get to the survey, scan this QR code or visit [mmsd.org/referenda-2020-survey](https://mmsd.org/referenda-2020-survey). Once there, you can choose your language preference.

Again, thank you.





# Sabemos que su tiempo es valioso. Gracias por acompañarnos esta noche.

---

**Tenemos una pregunta más:** ¿Contestaría una encuesta en línea sobre los posibles referendos en el año 2020?

Esta encuesta es una herramienta importante para recopilar datos que ayudarán a la Junta de Educación a comprender las necesidades y prioridades de la comunidad.

La encuesta estará disponible oficialmente en el mes de noviembre, pero esperamos que participe en una ronda preliminar, tal vez esta semana o la próxima.

Para acceder a la encuesta, escanee el código de barra que aparece en esta tarjeta o visite el sitio web [mmsd.org/referenda-2020-survey](https://mmsd.org/referenda-2020-survey). Una vez en la encuesta, puede elegir su idioma de preferencia.



Nuevamente gracias.



## **Your chance to shape the future of Madison's Public Schools is now.**

The Madison Metropolitan Board of Education is considering two referenda questions for the community to vote on in 2020 – one for facilities and one for operating expenses – that would further our academic vision for the future, our position as an employer of choice that attracts high-quality staff, and our impact on students for generations to come.

**To participate in a survey for the school board, scan this QR code or visit the link below.** Survey closes December 5, 2019.

[mmsd.org/referenda-2020-survey](https://mmsd.org/referenda-2020-survey)



NROOG MADISON CHEEB TSAM  
TSEV KAWM NTAWV



## Nej lub fwv tsam mus txhim kho yav tom ntej rau Madison Cov Tsev Kawm Ntawv yog ziang no.

Nroog Madison Tsoom Fwv Tswj Kev Kawm tab tom tuav xam ob tsab ntawv tawm suab cov lus nug rau lub zej zog tuaj pov npav nyob rau xyoo 2020 – ib tsab hais txog vaj tsev thiab ib tsab hais txog kev siv nyiaj ua hauj lwm – uas yuav txhawb peb lub zeem muag kawm txuj rau yav tom ntej, txhawb peb txoj hauj lwm raws li yog ib tug neeg ua hauj lwm xaiv ua uas yog ua kom txaus nyiam rau cov neeg ua hauj lwm zoo muaj txiaj ntxim slab, thiab peb qhov kev pab cov me nyuam kawm ntawv tom ntej no.

**Yog yuav mus ua daim ntawv thom nug rau tsoom fwv tswj kev kawm, scan tus QR code no los yog mus saib qhov link hauv qab no.** Daim ntawv thom nug kaw rau lub Kaum Ob Hlis 5, 2019.

[mmsd.org/referenda-2020-survey](https://mmsd.org/referenda-2020-survey)

