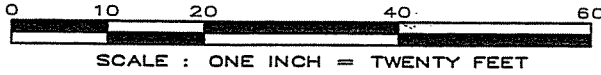


CERTIFIED SURVEY MAP

THE SOUTHEAST ONE-HALF (1/2) OF LOT 1, BLOCK 154, ORIGINAL PLAT OF MADISON, ALSO LOCATED IN THE NORTHWEST QUARTER (1/4) OF THE SOUTHEAST QUARTER (1/4) AND THE NORTHEAST QUARTER (1/4) OF THE SOUTHEAST QUARTER (1/4), ALL IN SECTION 13, TOWNSHIP 07 NORTH, RANGE 09 EAST, CITY OF MADISON, DANE COUNTY, WISCONSIN

Meander Corner to the North Quarter (1/4) Corner of Section 13-07-09
 Brass Capped Mon. Found, City of Madison Coords.
 N=397212.81 E=2135712.86



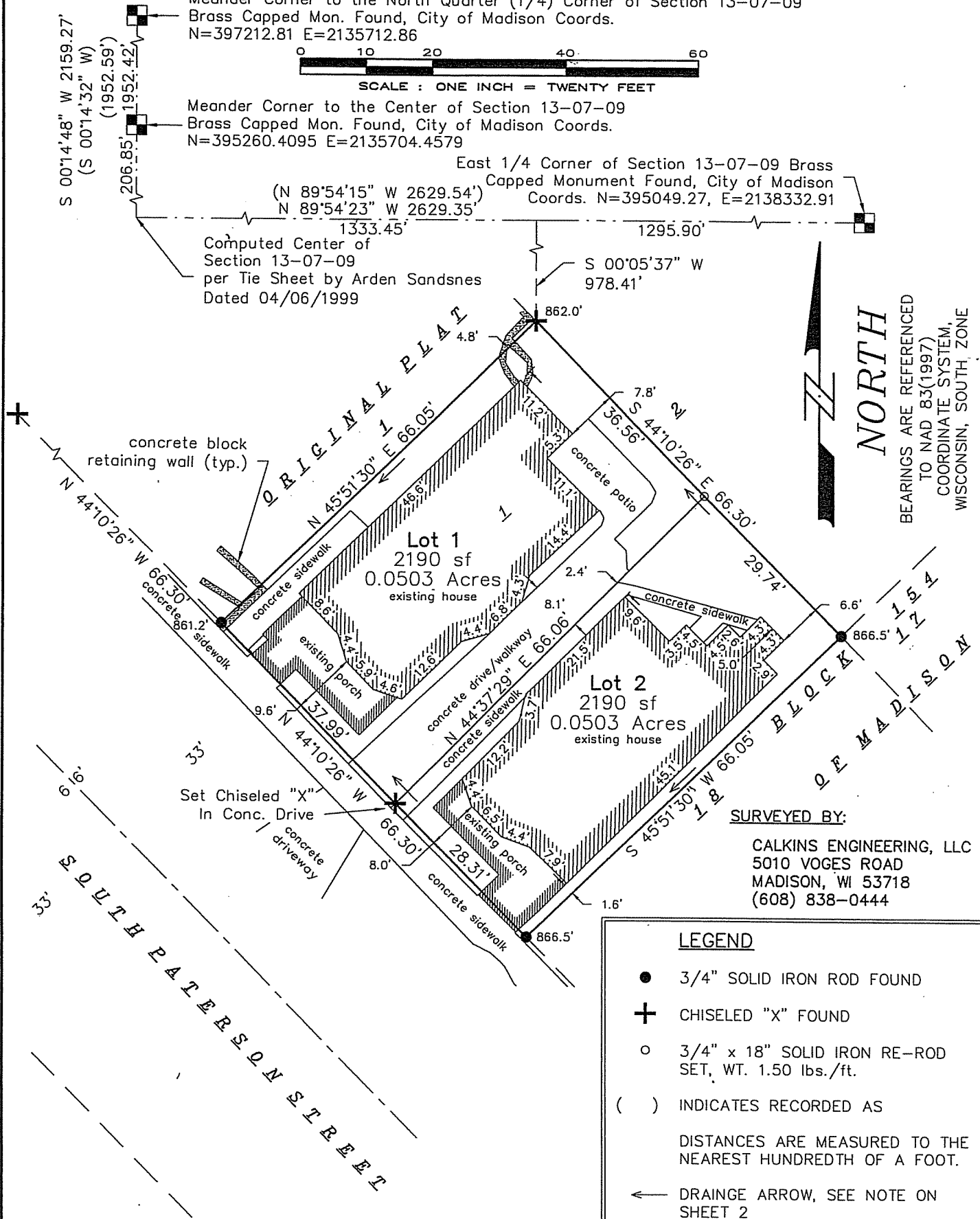
Meander Corner to the Center of Section 13-07-09
 Brass Capped Mon. Found, City of Madison Coords.
 N=395260.4095 E=2135704.4579

East 1/4 Corner of Section 13-07-09 Brass Capped Monument Found, City of Madison Coords. N=395049.27, E=2138332.91

Computed Center of Section 13-07-09 per Tie Sheet by Arden Sandsnes Dated 04/06/1999

NORTH

BEARINGS ARE REFERENCED TO NAD 83(1997) COORDINATE SYSTEM, WISCONSIN, SOUTH ZONE



SURVEYED BY:
 CALKINS ENGINEERING, LLC
 5010 VOGES ROAD
 MADISON, WI 53718
 (608) 838-0444

LEGEND

- 3/4" SOLID IRON ROD FOUND
- ⊕ CHISELED "X" FOUND
- 3/4" x 18" SOLID IRON RE-ROD SET, WT. 1.50 lbs./ft.
- () INDICATES RECORDED AS

DISTANCES ARE MEASURED TO THE NEAREST HUNDREDTH OF A FOOT.

← DRAINAGE ARROW, SEE NOTE ON SHEET 2