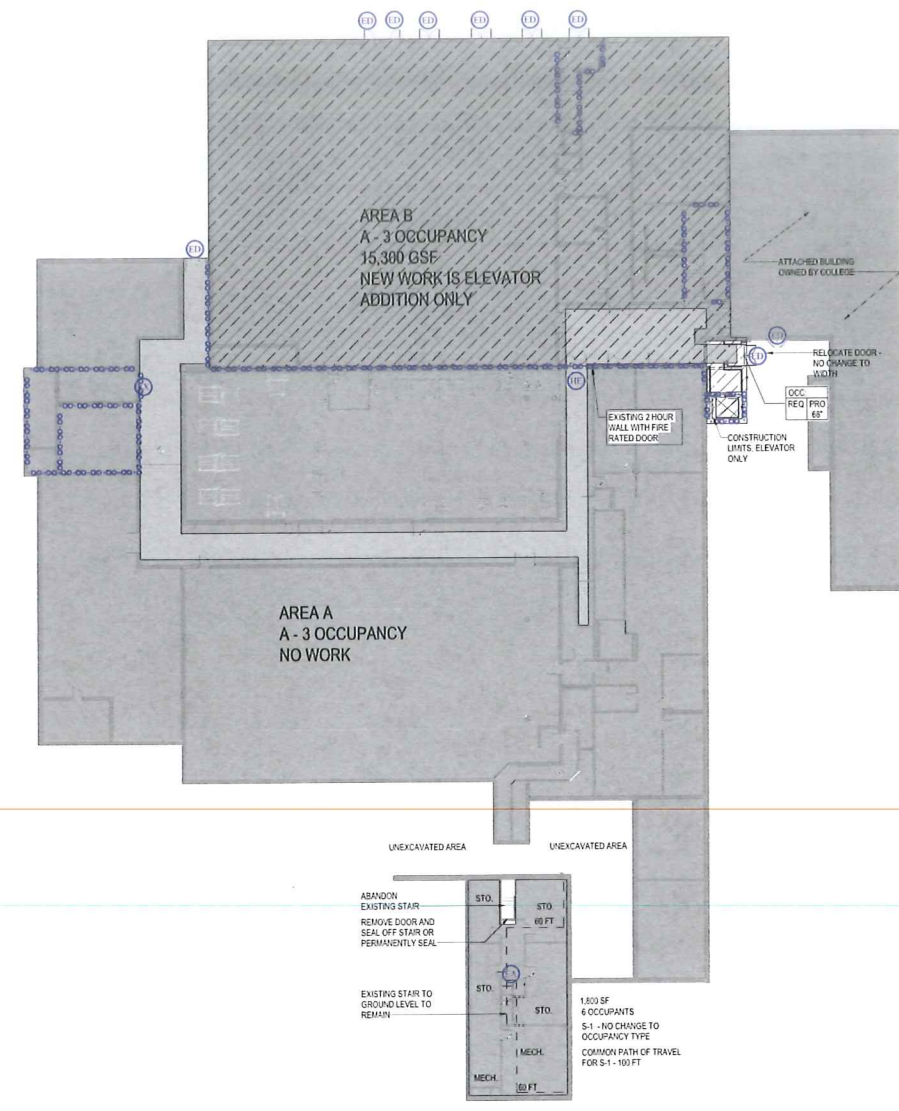


3/1/2022 11:51:40 AM



1 BASEMENT - EGRESS PLAN
100.CO 1" = 20'-0"

EDGEWOOD HIGH SCHOOL OF THE SACRED HEART



EDGEWOOD HIGH SCHOOL COMMONS ADDITION

B | W | B | R

15 Parkney St., Ste. 500
Madison, WI 53703
608.829.3701
bwbr.com

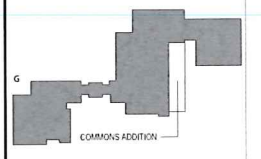


This document may contain information that is confidential or otherwise proprietary to the user. It is the sole responsibility of the user to ensure that the content and quality is consistent with the content and quality of the original document. If you find any errors, please contact the author.

Date	Issue
12/17/2021	DO ISSUE
03/14/2022	CO ISSUE

NOT FOR CONSTRUCTION

This Sheet may be a Reduced Copy. The border is 1" long on a Full Size Sheet. Drawing scales apply to Full Size Sheets.

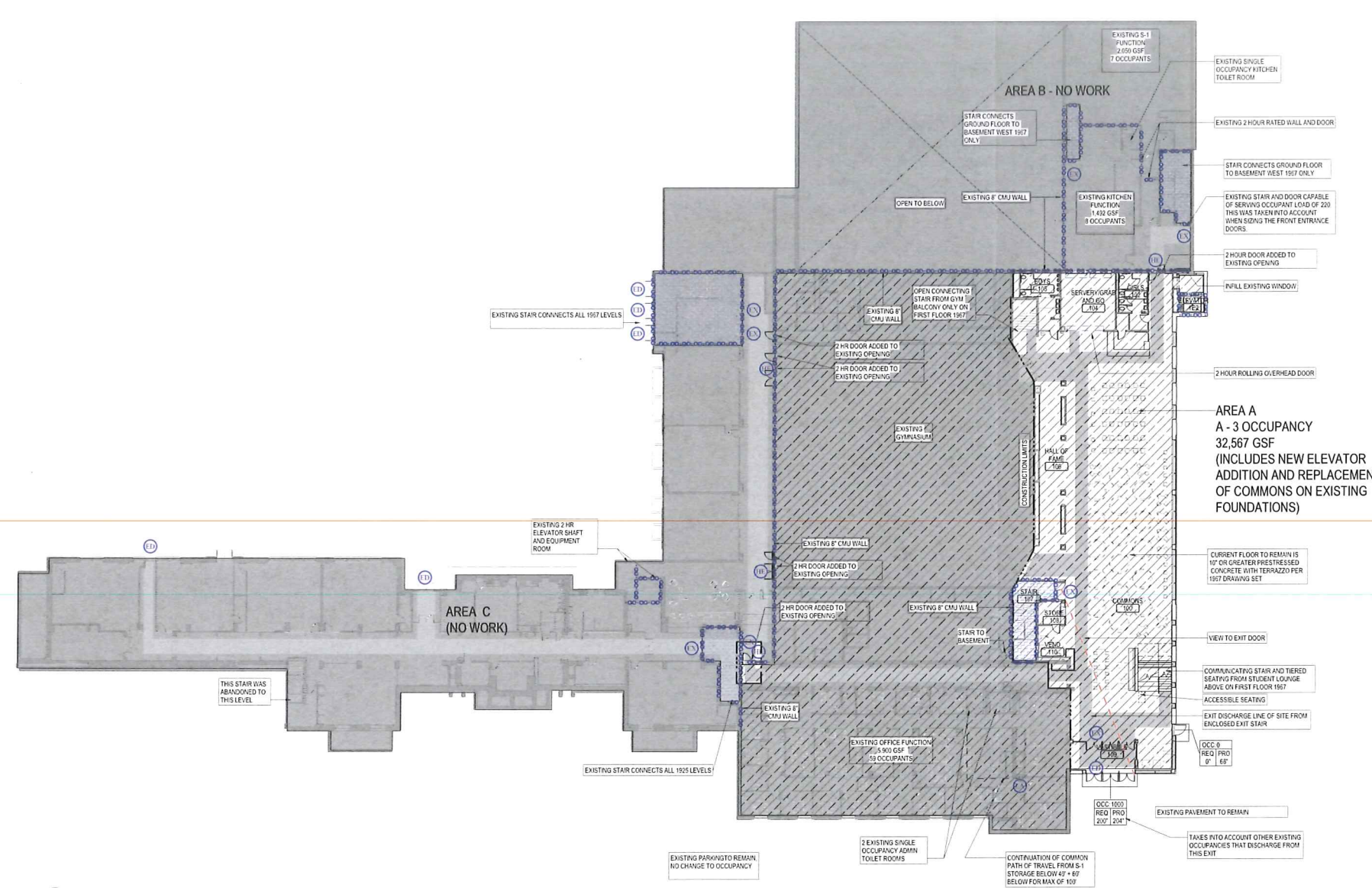


Project No.: 3.2020109.00
 Designer: KH
 Sheet Title: BASEMENT FIRE AND LIFE SAFETY DRAWINGS, CODE SUMMARY AND SYMBOLS

Sheet No.: 100.CO

Copyright © 2022

3/7/2022 11:33:57 AM



1 GROUND LEVEL - EGRESS PLAN
1" = 20'-0"

CODE SUMMARY

ADDRESS: 2219 MONROE STREET MADISON, WI 53711
 YEAR BUILT: 1905, 1907, 1908, 2018, 2019, AND OTHER UNKNOWN BUILDING RENOVATIONS/ADDITIONS

PROJECT DESCRIPTION
 THE SCOPE INCLUDES A GROUP A-3 OCCUPANCY BUILDING ADDITION IN THE SAME LOCATION OF THE DEMOLISHED PORTION UTILIZING EXISTING FLOOR AND FOUNDATION WALLS. THE ONLY ADDITIONAL FOOTPRINT IS A 3-STOP ELEVATOR ADDITION MAKING ALL LEVELS ACCESSIBLE WHERE THE BASEMENT IS NOT CURRENTLY. THE SCOPE ALSO INCLUDES LEVEL 2 ALTERATION WHERE EXISTING BUILDING IS BEING MODIFIED. ONE EXISTING EXIT ACCESS STAIR IN THE STORAGE BASEMENT IS BEING ELIMINATED AND ONE EXIT STAIR IS BEING MOVED TO EXIT THROUGH 2 HOUR RATED ENCLOSURE WHERE NONE EXIST TODAY.

GENERAL TYPE OF PROJECT
 BUILDING ADDITION
 LEVEL 2 ALTERATION

AUTOMATIC SPRINKLER SYSTEM
 ALL AREAS EFFECTED BY THE ADDITION/REMODEL WILL BE FULLY SPRINKLED. SPRINKLING ENTIRE BUILDING IS ANTICIPATED PER SCHEDULE N CODE VARIANCE C-31-2018 GIVEN IN PRIOR PROJECT.

AUTHORITY'S HAVING JURISDICTION & APPLICABLE REGULATIONS
 CITY OF MADISON, WI
 Wisconsin Commercial Building Code
 2015 IBC (plus amendments)
 2015 International Existing Building Code
 NFPA 13 - Fire Protection
 2017 SPS 318, Elevators, Escalators and Lift Devices
 ASME A17.1-2013, ASME A18.1-2011
 2017 National Electrical Code
 2015 International Energy Conservation Code
 ASHRAE 90.1-2013
 2015 IBC (chapter 13 and 2019 ICC/ANSI A117.1
 2015 International Mechanical Code (plus amendments)
 2015 International Fuel Gas Code (plus amendments)
 2018 Wisconsin Commercial Building Code
 Chapters SPS 300-387 Plumbing

OTHER APPLICABLE REGULATIONS
 2010 ADA STANDARDS FOR ACCESSIBLE DESIGN

ENERGY CONSERVATION
 ASHRAE 90.1-2016 CLIMATE ZONE 6
 COMPLIANCE PATH PRESCRIPTIVE

TYPE(S) OF CONSTRUCTION
 CONSTRUCTION TYPE(S) IBC (Chapter 6) II-B
 AREA SEPARATIONS / FIRE BARRIERS SEE CODE PLANS

BUILDING HEIGHT
 EXISTING NO. STOREYS: 4 (NO CHANGES TO THIS)
 EXISTING BUILDING HEIGHT: 67'-0" (NO CHANGES TO THIS)

ADDITION SEPARATED FROM EXISTING BUILDING WITH A 2 HOUR FIRE BARRIER. AREA SEPARATION PER VARIANCE ALLOWED WITH THE PERFORMING ARTS CENTER AND PRIOR ELEVATOR

ALLOWABLE AREA PER FLOOR	ACTUAL	ALLOWED
BASEMENT FLOOR	NOT IN SCOPE	
AREA A (A-3 OCC.)	15,300	31,065
AREA B (A-3 OCC.)	INCLUDES 292 GSF ELEVATOR ADDITION	
GROUND FLOOR	AREA A (A-3 OCC.) INCLUDES 213 GSF ELEVATOR ADDITION	32,384
AREA B (A-3 OCC.)	NOT IN SCOPE	
AREA C (E OCC.)	NOT IN SCOPE	
FIRST FLOOR	AREA A (A-3 OCC.) INCLUDES 213 GSF BALCONY AND ELEVATOR ADDITION	17,313 GSF
AREA C (MIXED)	NOT IN SCOPE	
AREA D (MIXED)	NOT IN SCOPE	
SECOND FLOOR	NOT IN SCOPE	
THIRD FLOOR	NOT IN SCOPE	
FOURTH FLOOR	NOT IN SCOPE	

MISCELLANEOUS
 FIRE RESISTIVE CORRIDORS? YES NO
 SMOKE TIGHT CORRIDORS (SMOKE PARTITIONS)? YES NO

FIRE RESISTIVE REQUIREMENTS
 STRUCTURAL FRAME
 COLUMNS: 0
 GIRDERS: 0
 TRUSSES: 0
 BEARING WALLS
 EXTERIOR BEARING WALLS: 0
 INTERIOR BEARING WALLS: 0
 NON-BEARING WALLS AND PARTITIONS: 0
 EXTERIOR: 0
 INTERIOR: 0
 FLOOR CONSTRUCTION
 FLOOR CEILING ASSEMBLY: 0
 PRIME & SEC. FLOOR BEAMS, JOISTS: 0
 ROOF CONSTRUCTION
 ROOF CEILING ASSEMBLY: 0
 PRIME & SEC. ROOF BEAMS, JOISTS: 0
 OTHER
 SHAFTS AND EXIT PASSAGEWAYS: 2
 EXTERIOR DOORS AND WINDOWS: 0

SYMBOLS LEGEND - CODE PLAN

FIRE RESISTIVE PARTITION
 1 HR FIRE RATED ASSEMBLY WITH SMOKE PROTECTION
 2 HR FIRE RATED ASSEMBLY WITH SMOKE PROTECTION
 FIRE WALL
 OCCUPANT LOAD SERVED BY DOOR OR STAIR REQUIRED AND PROVIDED EGRESS WIDTH
 EXIT
 EXIT DISCHARGE
 HORIZONTAL EXIT
 LOCKED - CARD READER ACCESS

MEANS OF EGRESS
 FIRE EXTINGUISHER & CABINET
 MEANS OF EGRESS
 CONSTRUCTION LIMITS

WALL FUNCTION
 SMOKE BOUNDARY
 OCCUPANCY BOUNDARY
 OCCUPANCY SEPARATION

EGRESS PATH
 EXIT PASSAGEWAY
 PROJECT AREA OF SEPARATION
 2 HOUR RATED FLOOR ASSEMBLY

OCCUPANCY AND MIXED USE IN AREA OF SEPARATION
 OCCUPANCIES (IBC CH 3 & 4)
 NONSEPARATED OCCUPANCIES?
 SEPARATED OCCUPANCIES?
 ACCESSORY OCCUPANCIES?
 FIRE BARRIER RATINGS (Section 707) SEE CODE PLANS

OCCUPANT LOAD	FUNCTION OF SPACE	AREA	SF	OCC	GROSS	NET	OCC LOAD
GROUND FLOOR - 1907							
VENDING RM 110	MERCANTILE	134 SF	63 SF	GROSS	2		
COMMONS RM 100	ASSEMBLY WITHOUT FIXED SEATS (UNCONCENTRATED tables and chairs)	5730 SF	15 SF	NET	305		
GRS AND GO RM 104	MERCANTILE	461 SF	63 SF	GROSS	6		
STORE RM 108	MERCANTILE	93 SF	63 SF	GROSS	2		
		6450 SF					207
FIRST FLOOR 1925							
STUDENT LOUNGE RM 203	ASSEMBLY WITHOUT FIXED SEATS (UNCONCENTRATED tables and chairs)	704 SF	15 SF	NET	47		
STUDENT LOUNGE RM 202	(none)	1009 SF	21 SF	NET	43		
		1713 SF					95
		8171 SF					432

PLUMBING FIXTURE COUNTS

REQUIRED	PROVIDED	WATER CLOSETS	TOILETS	URINALS	LAUNDRIES	DRINKING FOUNTAIN
2	2	4	4	4	2	2
4	4	4	4	3	3	2

INTERIOR FINISHES CLASSIFICATION

OCCUPANCY	EXITS	CORRIDORS	ROOMS

MEANS OF EGRESS
 EXIT ACCESS TRAVEL DISTANCE
 A, E, F-1, M, R, S-1: 250 FT
 B: 300 FT
 COMMON PATH OF TRAVEL
 A, E, M OCCUPANCIES: 75 FT SPRINKLED
 B AND S OCCUPANCIES: 100 FT SPRINKLED
 EGRESS WIDTH
 STAIRWAYS: 3' PER OCCUPANT
 OTHER COMPONENT: 2' PER OCCUPANT

EDGEWOOD HIGH SCHOOL OF THE SACRED HEART

EDGEWOOD HIGH SCHOOL COMMONS ADDITION

B | W | B | R

15 Pinckney St., Ste. 500
 Madison, WI 53703
 608.829.3701
 bwbr.com

IMEG

STRAND ASSOCIATES

NOT FOR CONSTRUCTION

3.2020109.00 KH

GROUND LEVEL FIRE AND LIFE SAFETY DRAWINGS

101.CO

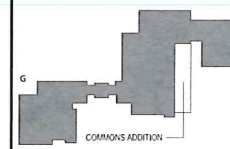
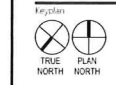


This document may be an electronic file or may be printed from an electronic file provided to the user. It is the sole responsibility of the user to ensure that the content and quality is consistent with the content and quality of the original documents or files at BWSB.

Issued For	Plan	Date
	DD ISSUE	12/17/2021
	CD ISSUE	08/14/2022

NOT FOR CONSTRUCTION

This sheet may be a Reduced Copy. The bar above is 1" long on a Full Size Sheet. Drawing Scale applies to Full Size Sheets.



Comm. No: 3.2020109.00
Drawn: KH

Sheet Title:
LEVEL ONE FIRE AND LIFE SAFETY DRAWINGS

Sheet No:
102.CO

