

From: [Harris, Heather](#)
To: [All Alders](#)
Cc: [Windsor, Liz](#); [Kapusta-Pofahl, Karen](#)
Subject: Public comment- Presentation for file #85816
Date: Tuesday, December 10, 2024 12:46:07 PM
Attachments: [image002.png](#)
[image003.png](#)
[image004.png](#)
[image005.png](#)
[image006.png](#)
[image007.png](#)
[image008.png](#)
[241210_6702 Mader Drive - Common Council Presentation.pdf](#)
[image009.png](#)

Good afternoon,

The attached presentation was submitted by a registrant on agenda item #19 (file# 85816). There are currently no registrants wishing to speak on this item, so I'm not sure if it will make it on the Consent Agenda for tonight.

The individual is currently registered on this item as "in support" and "available to answer questions".

The presentation has been attached to the Legistar file, but please let me know if any other action is needed.

Kindest regards,

Heather M. Harris, WCMC

Pronouns: she/hers

City-County Building Room 105
210 Martin Luther King Jr. Blvd.
(608) 266-4601

www.cityofmadison.com/clerk

@MadisonWIClerk

"We exist to assist"

From: Patrick Terry <pterry@jla-ap.com>
Sent: Tuesday, December 10, 2024 7:36 AM
To: McNabola, Lisa <LMcNabola@cityofmadison.com>
Subject: 6702 Mader Drive - Common Council Presentation

Caution: This email was sent from an external source. Avoid unknown links and attachments.

Good Morning,


Please find our Common Council presentation for Mader Dr attached.

Do you know if we are on the consent agenda?

Thanks for your help throughout this process.

PATRICK TERRY
Project Manager



 D: [\(608\) 442-3823](tel:(608)442-3823)
C: [\(608\) 333-3428](tel:(608)333-3428)

 pterry@jla-ap.com

 jla-ap.com



JLA
ARCHITECTS

MADISON | MILWAUKEE | DENVER

*Recognized as a 2024 Best Places to Work by
the Milwaukee Business Journal*

Notice: This message is intended exclusively for the individual or entity to which it is addressed. This communication may contain information that is proprietary, privileged, or confidential. If you are not the named addressee, you are not authorized to read, print, retain, copy, or disseminate this message or any part of it. If you have received this message in error, please notify the sender immediately by e-mail or fax – and delete all copies of this message.

6701 McKee Road / 6702 Mader Drive Mixed Use

Common Council Presentation
Context Map



6701 McKee Road / 6702 Mader Drive Mixed Use



NORTHEAST CORNER - McKEE RD (LOOKING WEST)



NORTHWEST CORNER - McKEE RD (LOOKING SOUTHEAST)



NORTHEAST CORNER - McKEE RD & MAPLE GROVE DR (SITE CORNER)

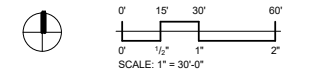


SOUTHEAST CORNER - MAPLE GROVE DR (LOOKING TOWARDS MADER DR)

6701 McKee Road / 6702 Mader Drive Mixed Use



1 ARCHITECTURAL SITE PLAN
SCALE: 1" = 30'-0"





McKee Road Perspective - Before



JLA
ARCHITECTS



BEFORE



JLA
ARCHITECTS



TERRACE VIEW FROM 3RD FLOOR BALCONY - BEFORE



SIGNAGE 7531



JLA
ARCHITECTS



MAPLE GROVE AND MADER DR INTERSECTION - BEFORE



JLA
ARCHITECTS



SIGNAGE



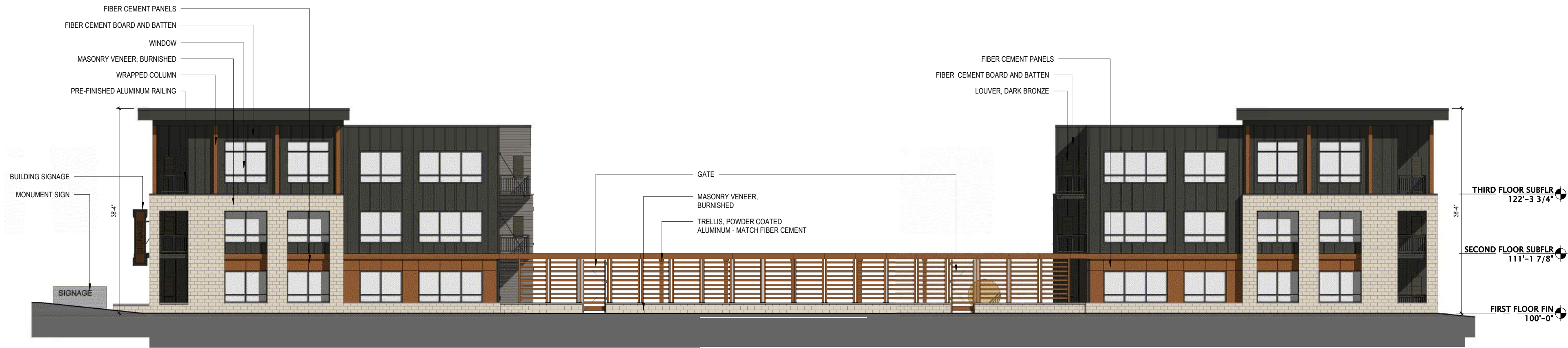
JLA
ARCHITECTS



JLA
ARCHITECTS

6701 McKee Road / 6702 Mader Drive Mixed Used

Common Council Presentation
McKee Rd Elevation



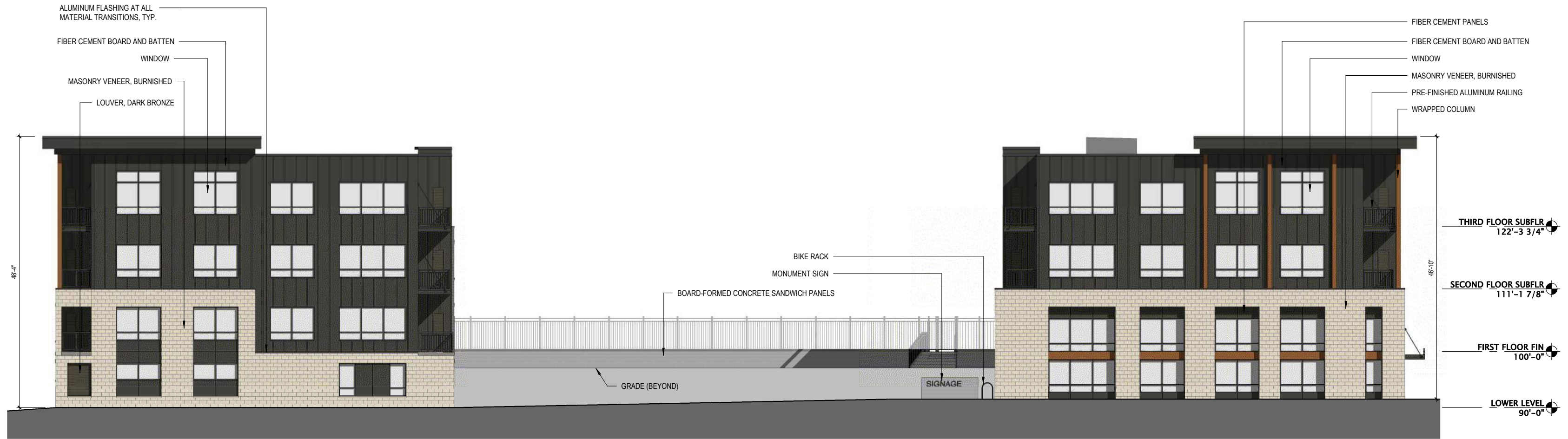
6701 McKee Road / 6702 Mader Drive Mixed Use

Common Council Presentation Maple Grove Dr Elevation



6701 McKee Road / 6702 Mader Drive Mixed Used

Common Council Presentation Mader Dr. Elevation



6701 McKee Road / 6702 Mader Drive Mixed Used

Common Council Presentation A2 West Elevation





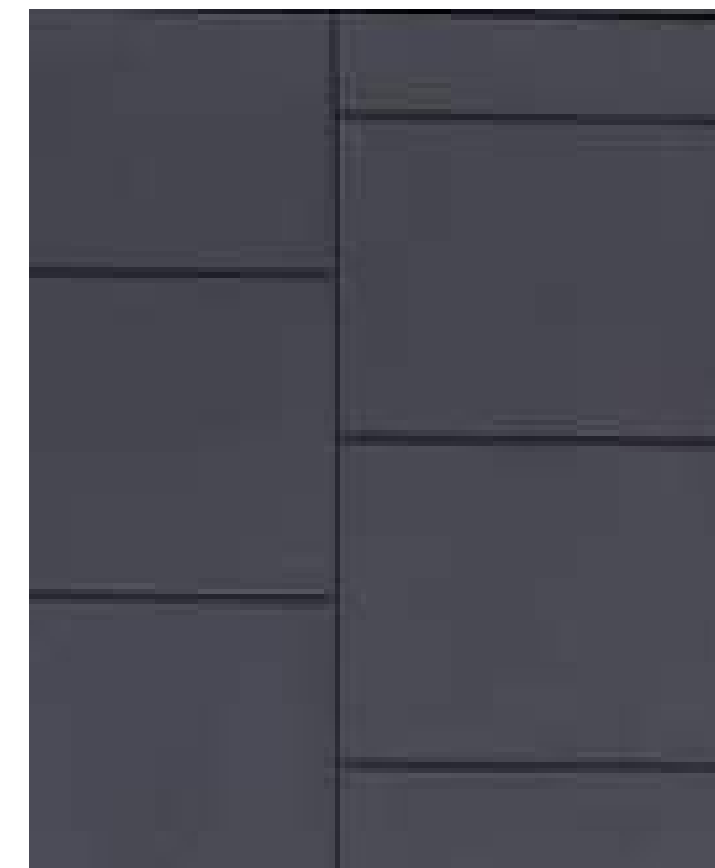
DARK BRONZE FINISH:
WINDOWS, LOUVERS, COPING,
RAILINGS, PICKET FENCES



FIBER CEMENT LAP SIDING:
AGED PEWTER



METALLIC BRONZE: FIBER CEMENT
CLADDING AND ARCHITECTURAL
SCREEN POWDER COAT



FIBER CEMENT PANEL:
IRON GRAY



CMU: BURNISHED CREAM COLOR



FIBER CEMENT BOARD AND BATTEN:
IRON GRAY



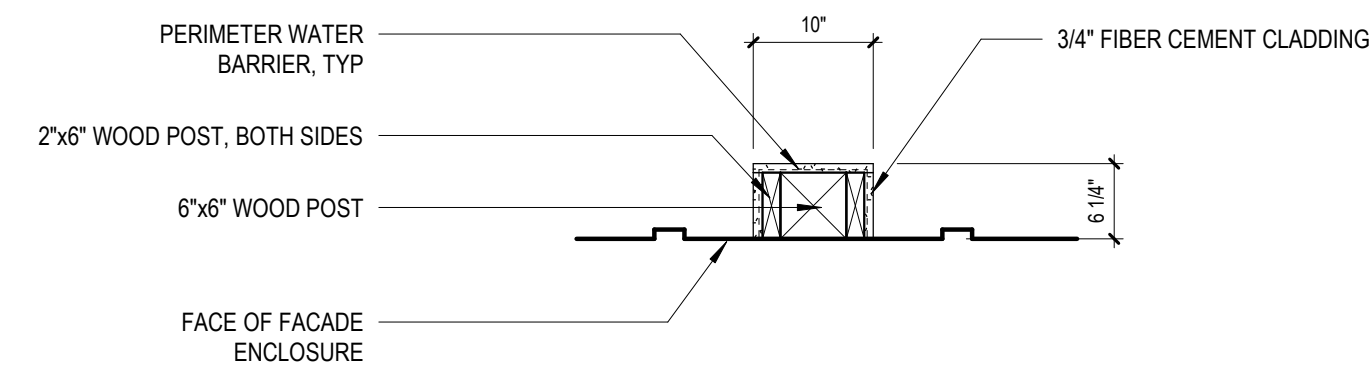
CMU: SPLITFACE CREAM COLOR



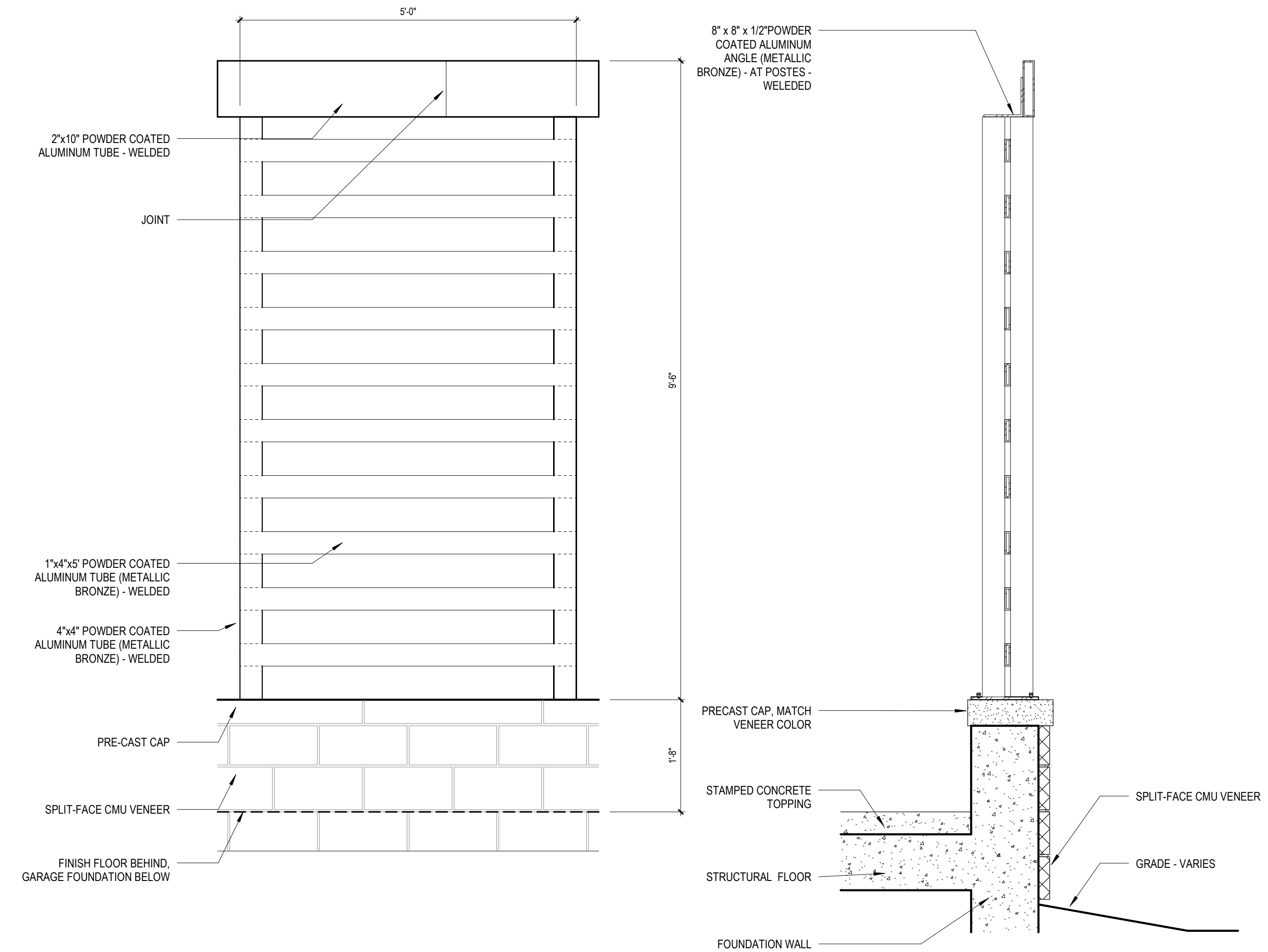
PRECAST CONCRETE: LINTEL, SILL,
WALL CAPS



BOARD FORMED CONCRETE

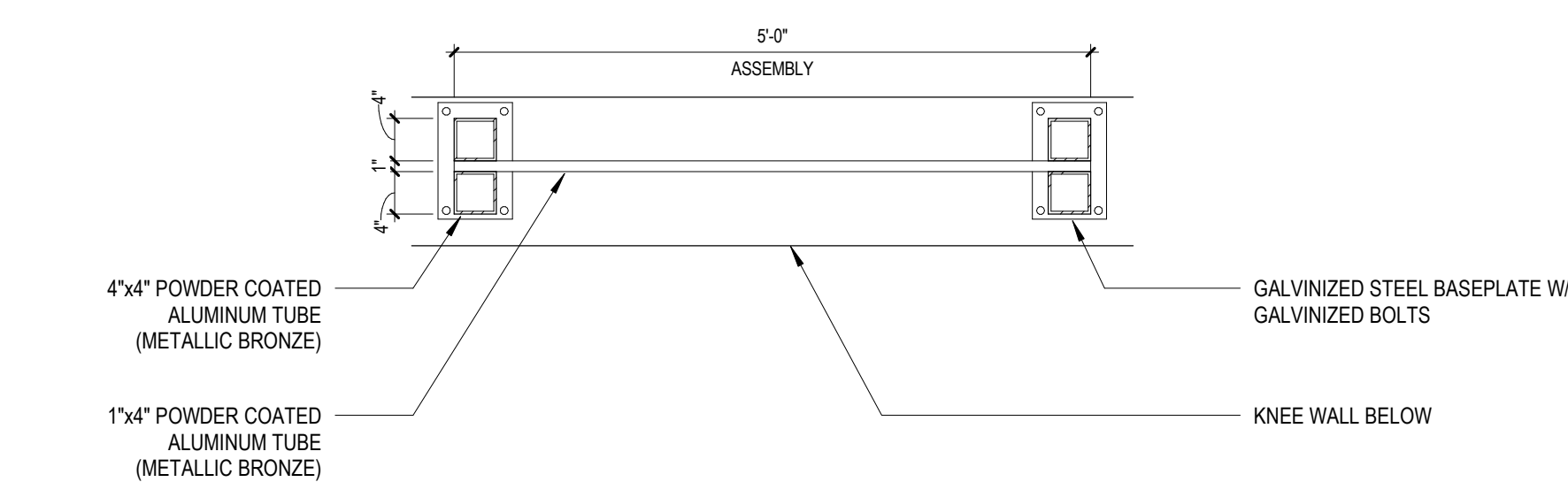


PLAN DETAIL: CLAD PILASTER

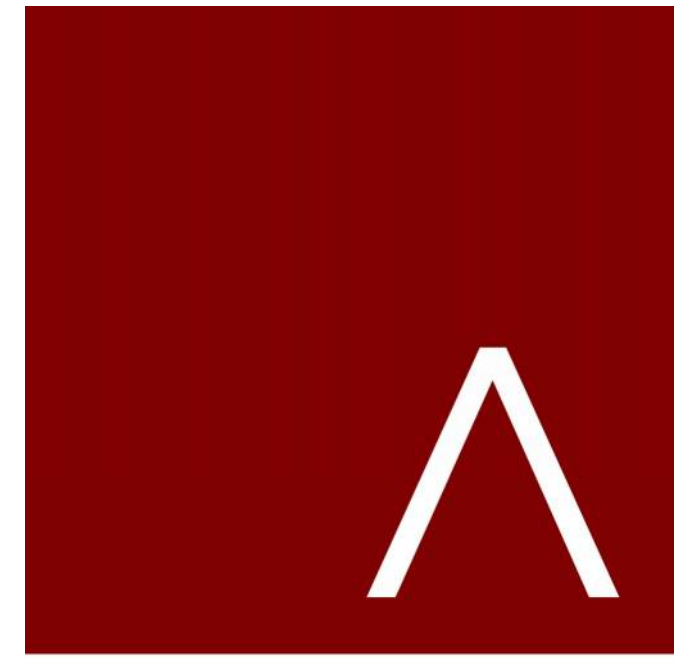


ENLARGED ELEVATION:
ARCHITECTURAL SCREEN PANEL

WALL SECTION:
ARCHITECTURAL SCREEN PANEL



ENLARGED PLAN: ARCHITECTURAL
SCREEN PANEL



JLA
ARCHITECTS
MADISON : MILWAUKEE
jla-ap.com

JLA PROJECT NUMBER: W22-0201



MCKEE ROAD MIXED
USE DEVELOPMENT

Common Council Presentation

PROGRESS DOCUMENTS

These documents reflect progress and intent and may be subject to change, including additional detail. These are not final construction documents and should not be used for final bidding or construction-related purposes.

DATE OF ISSUANCE NOVEMBER 7, 2024

REVISION SCHEDULE		
Mark	Description	Date

SHEET TITLE

EXTERIOR MATERIALS
& BUILDING DETAILS

SHEET NUMBER

U220



JLA
ARCHITECTS

THANK YOU

JLA-AP.COM



3570 Pioneer Road
Verona, WI 53593
PH: (608) 827-9401
FAX: (608) 827-9402
WEB: www.olsontoon.com



MCKEE ROAD MIXED USE DEVELOPMENT

CITY OF MADISON LAND USE AND URBAN DESIGN COMMISSION SUBMITTAL

PROGRESS DOCUMENTS

These documents reflect progress and intent and may be subject to change, including additional detail. These are not final construction documents and should not be used for final bidding or construction-related purposes.

DATE OF ISSUANCE

10/18/2024

SHEET TITLE

LANDSCAPE PLAN

SHEET NUMBER

L100

CITY OF MADISON LANDSCAPE WORKSHEET					
Total Developed Area	SQUARE FEET	POINTS PER ACRE		LANDSCAPE POINTS REQ.	
		5 points per 100 sq ft	5 points per 100 sq ft	995	995
111,071 sf (tot) - 50,851 sf (building footprint)	59,723				
PLANT TYPE / ELEMENT	POINT VALUE	CREDS / EXISTING LANDSCAPING		NEW / PROPOSED LANDSCAPING	
		QUANTITY	POINTS ACHIEVED	QUANTITY	POINTS ACHIEVED
Overstory Deciduous (2.5" caliper)	35	0	0	19	665
Tall Evergreen Tree (5'-6')	35	0	0	0	0
Ornamental Tree (1.5" caliper)	15	0	0	14	210
Upright Evergreen Shrub (i.e. arborvitae) 3'-4" tall	18	0	0	51	510
Shrub, deciduous (#3 gal cont)	4	0	0	95	285
Shrub, evergreen (#3 gal cont)	4	0	0	8	32
Ornamental Grasses/Perennials (#1 gal cont)	2	0	0	337	674
Ornamental/Decorative Fencing or Wall (4pts / 10LF)	4	0	0	0	0
Existing Significant Specimen Tree (2.5" dbh)	14	0	0	0	0
Landscape Furniture for public seating and/or transit connections (Spts. per seat)	5	0	0	0	0
					2376

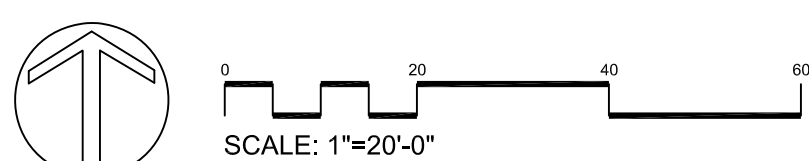
KEY	SCIENTIFIC NAME	QTY	SIZE	ROOT	STEM
DECIDUOUS TREES					
AF	<i>Acer x freemanii</i> 'Armstrong'	5	2.5"	B&B	
GB	<i>Ginkgo biloba</i> 'Princeton Sentry'	4	2"	B&B	
GD	<i>Gymnocladus dioica</i> 'Espresso-JFS'	1	2"	B&B	
GS	<i>Gleditsia triacanthos</i> var. <i>inermis</i> 'Skyline'	2	2"	B&B	
GT	<i>Gleditsia triacanthos</i> 'Drawes' PPT1, 698	2	2"	B&B	
PA	<i>Platanus x acutifolia</i> 'Morton Circle'	2	2.5"	B&B	
QW	<i>Quercus x warei</i> 'Long'	3	2.5"	B&B	
ORNAMENTAL TREES					
CC	<i>Cercis canadensis</i>	3	6"	B&B	CLUMP
MR	<i>Malus</i> 'Jewelcicle'	4	2"	B&B	
SR	<i>Syringa reticulata</i> 'Ivory Silk'	7	2"	B&B	TF
UPRIGHT EVERGREEN SHRUBS					
JC	<i>Juniperus chinensis</i> 'Mountbatten'	4	6"	B&B	
JS	<i>Juniperus x 'J.N. Select Blue'</i>	18	6"	B&B	
JT	<i>Juniperus virginiana</i> 'Taylor'	7	6"	B&B	
JV	<i>Juniperus virginiana</i> 'Canevert'	5	6"	B&B	
TS	<i>Thuja occidentalis</i> 'Smaragd'	17	5"	B&B	
EVERGREEN SHRUBS					
To	<i>Thuja occidentalis</i> 'Limeville'	6	#5	Cont.	
Pm	<i>Pinus mugo</i> 'Stowmound'	2	#3	Cont.	
DECIDUOUS SHRUBS					
Dk	<i>Dierilla</i> 'G2XR85411'	9	#3	Cont.	
Lv	<i>Lilac virginica</i> 'Spartan'	18	#3	Cont.	
Ha	<i>Hydrangea arborescens</i> 'Abelco'	7	#3	Cont.	
Hp	<i>Hydrangea paniculata</i> 'Jane'	9	#3	Cont.	
Hq	<i>Hydrangea paniculata</i> 'Bulk'	12	#3	Cont.	
Po	<i>Physocarpus opulifolius</i> 'Dionne May'	12	#3	Cont.	
Sb	<i>Spiraea betulifolia</i> 'Tor'	16	#3	Cont.	
Sd	<i>Syringa</i> 'SNSJBP7'	9	#3	Cont.	
Vd	<i>Viburnum dentatum</i> 'Christina'	3	#5	Cont.	
ORNAMENTAL GRASSES & PERENNIALS					
as	<i>Allium</i> 'M30mpm4012'	39	#1	Cont.	
ca	<i>Calamagrostis x acutiflora</i> 'Karl Foerster'	75	#1	Cont.	
hg	<i>Hosta</i> 'Guacamole'	24	#1	Cont.	
hk	<i>Hosta</i> 'Krossa Regal'	8	#1	Cont.	
nc	<i>Nepeta</i> 'Cat's Pajamas'	20	#1	Cont.	
ph	<i>Phacelia virgata</i> 'Heavy Metal'	30	#1	Cont.	
ms	<i>Panicum virgatum</i> 'Shenandoah'	23	#1	Cont.	
sh	<i>Sporobolus heterolepis</i>	74	#1	Cont.	
rt	<i>Rutbeckia fulgida</i> 'Vatte's Little Suzy'	44	#1	Cont.	

LANDSCAPE NOTES:
 • Please refer to Grading & Erosion Control Plan for final contour information.
 • Individual trees in lawn areas to receive wood mulch rings

SM 1.5" diameter washed stone mulch spread to 3" depth, over weed barrier fabric with Dimex EdgePro polyvinyl edging or equivalent.

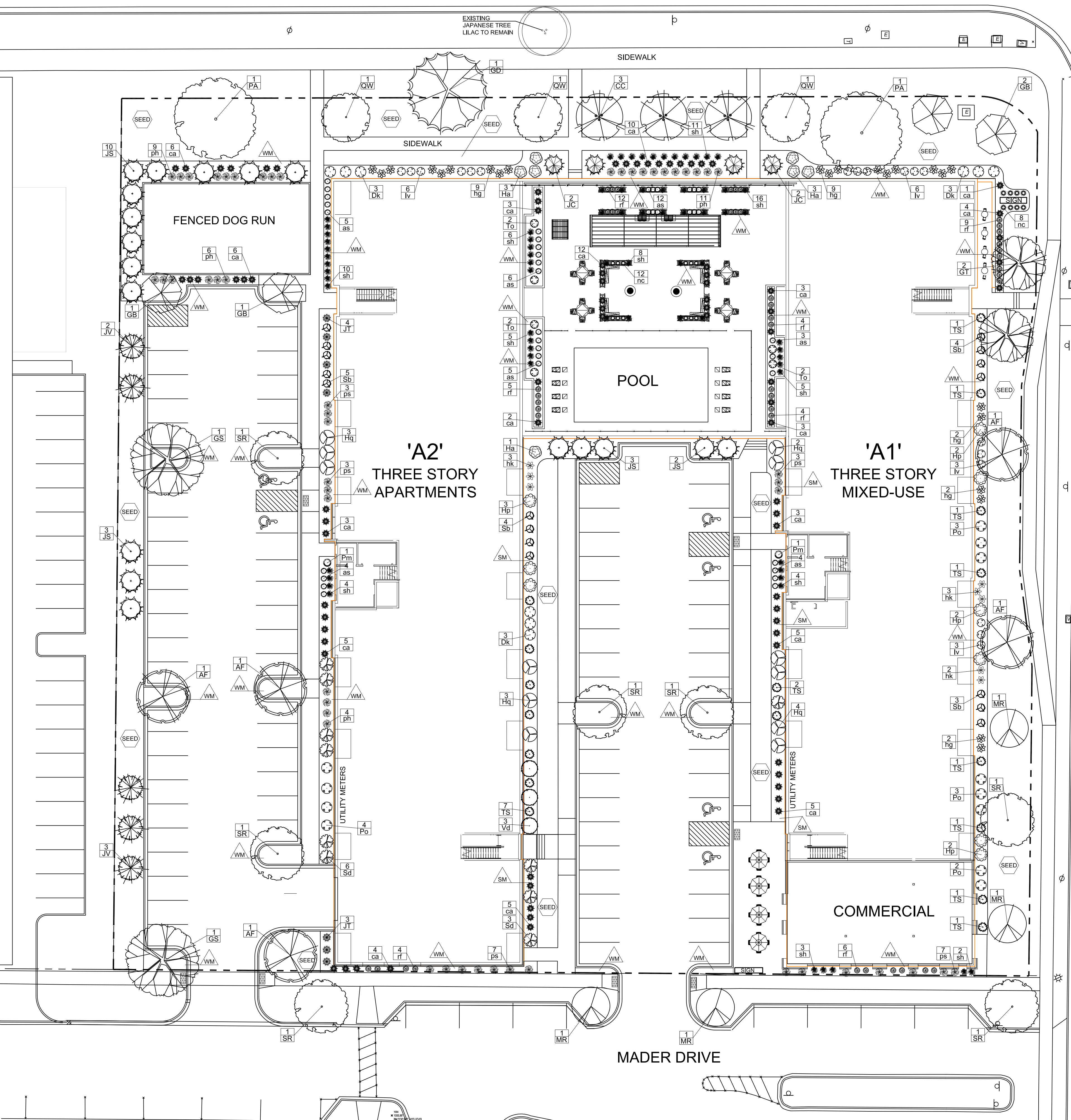
WM Brown Dyed Wood Mulch spread to 3" depth, with Dimex EdgePro polyvinyl edging or equivalent.

SEED Premium grass seed with straw mat erosion blanket.



STREET TREE NOTE:
 Existing street trees shall be protected. Contractor shall install tree protection fencing in the area between the curb and sidewalk and extend it at least 5 feet from both sides of the tree along the length of the terrace. No excavation is permitted within 5 feet of the outside edge of a tree trunk. If excavation within 5 feet of any tree is necessary, contractor shall contact City Forestry at (608-266-4816) prior to excavation to assess the impact to the tree and root system. Tree pruning shall be coordinated with City Forestry prior to the start of construction. Tree protection specifications can be found in section 107.13 of City of Madison Standard Specifications for Public Works Construction - <http://www.cityofmadison.com/business/pw/documents/StdSpecs/2013/Part1.pdf>. Any tree removals that are required for construction after the development plan is approved will require at least a 72 hour wait period before a tree removal permit can be issued by Forestry, to notify the Alder of the change in the tree plan.

At least one week prior to street tree planting, Contractor shall contact City Forestry (608-266-4816) to schedule inspection and approval of nursery tree stock and review planting specifications with the landscaper.



MAPLE GROVE DRIVE

MADER DRIVE

CITY OF MADISON LANDSCAPE WORKSHEET				
Total Developed Area	SQUARE FEET	5 points per 100 sq ft	LANDSCAPE POINTS REQ.	
111,071 sf (tot) - 50,551 sf (building footprint)	59,723		995	
PLANT TYPE / ELEMENT	POINT VALUE	QUANTITY	POINTS ACHIEVED	QUANTITY
Overstory Deciduous (2.5" caliper)	35	0	19	665
Tall Evergreen Tree (5'-6')	35	0	0	0
Ornamental Tree (1.5" caliper)	10	0	14	230
Upright Evergreen Shrub (i.e. arborvitae) 3'-4' tall	10	0	56	560
Shrub, deciduous (63 gal cont)	4	0	91	273
Shrub, evergreen (63 gal cont)	4	0	8	32
Ornamental Grasses/Perennials (#1 gal cont)	2	0	345	690
Ornamental/Decorative Fencing or Wall (4pts / 10LF)	4	0	0	0
Existing Significant Specimen Tree (2.5" dbh)	14	0	0	0
Landscape Furniture for public seating and/or transit connections (Spts. per seat)	5	0	0	0
TOTAL POINTS ACHIEVED			2430	

KEY	SCIENTIFIC NAME	COMMON NAME	QTY	SIZE	ROOT	STEM
DECIDUOUS TREES						
AF	<i>Acer x freemanii 'Armstrong'</i>	Armstrong Maple	5	2.5"	B&B	
GB	<i>Ginkgo biloba 'Princeton Sentry'</i>	Princeton Sentry Ginkgo	4	2"	B&B	
GD	<i>Gymnocladus dioica 'Espresso-JPS'</i>	Espresso Kentucky Coffeetree	1	2"	B&B	
GS	<i>Quercus macrocarpa var. 'nema' 'Skyline'</i>	Skyline Honeylocust	2	2"	B&B	
GT	<i>Gleditsia triacanthos 'Doravie' 'P21 698'</i>	Street Keeper Honeylocust	2	2"	B&B	
PA	<i>Platanus x acerifolia 'Morton Circle'</i>	Exclamation! London Planetree	2	2.5"	B&B	
QW	<i>Quercus x warei 'Long'</i>	Regal Prince Oak	3	2.5"	B&B	
ORNAMENTAL TREES						
CC	<i>Cercis canadensis</i>	Eastern Redbud	3	6"	B&B	CLUMP
MR	<i>Malus 'Jewelcole'</i>	Red Jewel Crabapple	4	2"	B&B	
SR	<i>Syringa reticulata 'Ivory Silk'</i>	Ivory Silk Japanese Tree Lilac	7	2"	B&B	TF
UPRIGHT EVERGREEN SHRUBS						
JC	<i>Juniperus chinensis 'Mountbatten'</i>	Mountbatten Juniper	4	6"	B&B	
JS	<i>Juniperus x 'J.N. Select Blue'</i>	Star Power Juniper	18	6"	B&B	
JT	<i>Juniperus virginiana 'Taylor'</i>	Taylor Juniper	7	6"	B&B	
JV	<i>Juniperus virginiana 'Cinereifolia'</i>	Caneart Juniper	5	6"	B&B	
TS	<i>Thuja occidentalis 'Smaragd'</i>	Emerald Arborvitae	22	5"	B&B	
EVERGREEN SHRUBS						
To	<i>Thuja occidentalis 'Linesville'</i>	Linesville Arborvitae	6	#5	Cont.	
Pm	<i>Pinus mugo 'Slowmound'</i>	Dwarf Mountain Mugo Pine	2	#3	Cont.	
DECIDUOUS SHRUBS						
Dk	<i>Dierilla 'G2X885411'</i>	Kodjak Red Bush Honeysuckle	9	#3	Cont.	
Iv	<i>Itea virginica 'Sprinch'</i>	Little Henry Virginia Sweetspire	17	#3	Cont.	
Ha	<i>Hydrangea arborescens 'Abetwo'</i>	Incrediball Hydrangea	7	#3	Cont.	
Hg	<i>Hydrangea paniculata 'Lans'</i>	Little Lime Hydrangea	7	#3	Cont.	
Hq	<i>Hydrangea paniculata 'Balk'</i>	Quick Fire Hydrangea	12	#3	Cont.	
Po	<i>Physocarpus opulifolius 'Donna May'</i>	Little Devil Ninebark	10	#3	Cont.	
Sb	<i>Spiraea betulifolia 'Tor'</i>	Tor Birchleaf Spiraea	16	#3	Cont.	
Sd	<i>Syringa 'SNSJBP7'</i>	Blooming Dark Purple Lilac	10	#3	Cont.	
Vd	<i>Viburnum dentatum 'Christon'</i>	Blue Muffin Arrowwood Viburnum	3	#5	Cont.	
ORNAMENTAL GRASSES & PERENNIALS						
as	<i>Allium 'MGsmmpk13'</i>	Summer Peek-A-Boo Allium	39	#1	Cont.	
ca	<i>Calamagrostis x acutiflora 'Karl Foerster'</i>	Karl Foerster Feather Reed Grass	77	#1	Cont.	
hg	<i>Hosta 'Guacamole'</i>	Guacamole Hosta	24	#1	Cont.	
hk	<i>Hosta 'Krasa Regal Hosta'</i>	Krasa Regal Hosta	8	#1	Cont.	
nc	<i>Nepeta 'Carl's Pagamas'</i>	Carl's Pagamas Catmint	20	#1	Cont.	
ph	<i>Panicum virgatum 'Heavy Metal'</i>	Heavy Metal Switch Grass	30	#1	Cont.	
ps	<i>Panicum virgatum 'Shenandoah'</i>	Shenandoah Red Switch Grass	23	#1	Cont.	
sh	<i>Sporobolus heterolepis</i>	Prairie Dropseed Grass	74	#1	Cont.	
rt	<i>Rudbeckia fulgida 'Viete's Little Suzy'</i>	Little Suzy Black Eyed Susan	50	#1	Cont.	

LANDSCAPE NOTES:

- Please refer to Grading & Erosion Control Plan for final contour information.
- Individual trees in lawn areas to receive wood mulch rings

1.5" diameter washed stone mulch spread to 3" depth, over weed barrier fabric with Dimex EdgePro polyvinyl edging or equivalent.

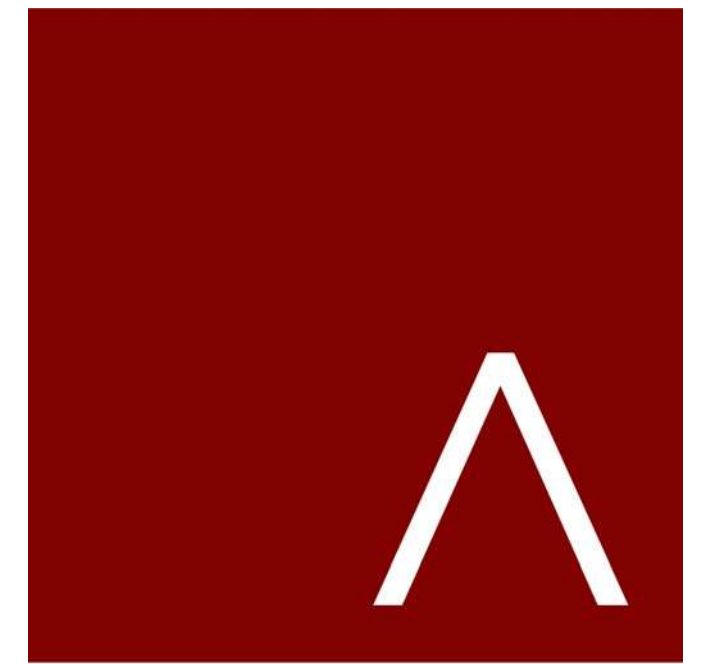
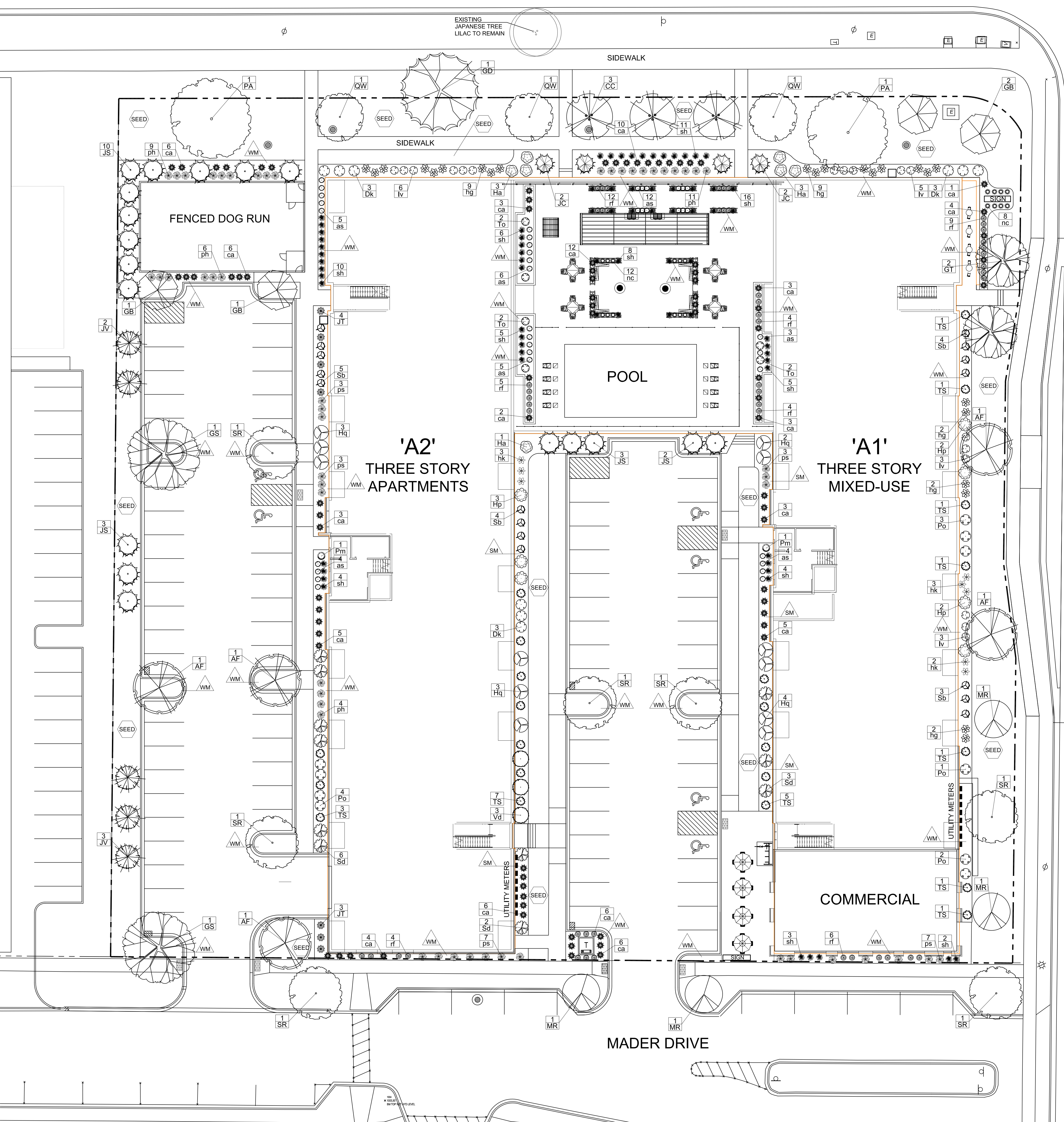
Brown Dyed Wood Mulch spread to 3" depth, with Dimex EdgePro polyvinyl Edging or equivalent.

Premium grass seed with straw mat erosion blanket.

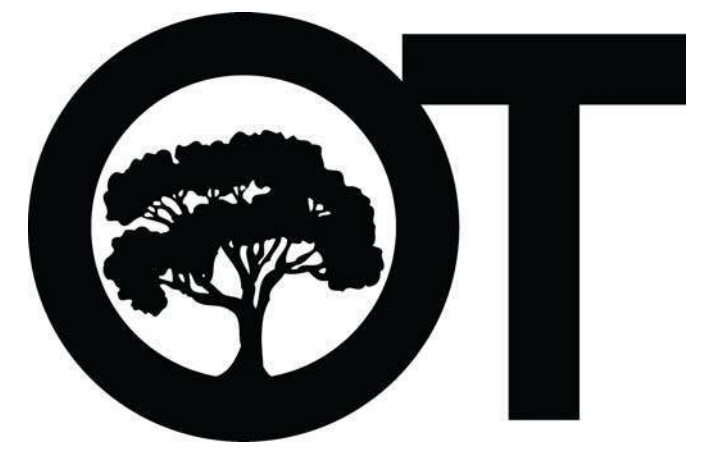
SCALE: 1/16"=1'-0"

STREET TREE NOTE:
Existing street trees shall be protected. Contractor shall install tree protection fencing in the area between the curb and sidewalk and extend it at least 5 feet from both sides of the tree along the length of the terrace. No excavation is permitted within 5 feet of the outside edge of a tree trunk. If excavation within 5 feet of any tree is necessary, contractor shall contact City Forestry at (608-266-4816) prior to excavation to assess the impact to the tree and root system. Tree pruning shall be coordinated with City Forestry prior to the start of construction. Tree protection specifications can be found in section 107.13 of *City of Madison Standard Specifications for Public Works Construction* - <http://www.cityofmadison.com/business/pw/documents/StdSpecs/2013/Part1.pdf>. Any tree removals that are required for construction after the development plan is approved will require at least a 72 hour wait period before a tree removal permit can be issued by Forestry, to notify the Alder of the change in the tree plan.

At least one week prior to street tree planting, Contractor shall contact City Forestry (608-266-4816) to schedule inspection and approval of nursery tree stock and review planting specifications with the landscaper.



JLA
ARCHITECTS
MADISON | MILWAUKEE | DENVER
JLA-AP.COM



JLA PROJECT NUMBER: W22-0201



MAPLE GROVE DRIVE

MCKEE ROAD MIXED USE DEVELOPMENT
UPDATED LANDSCAPING

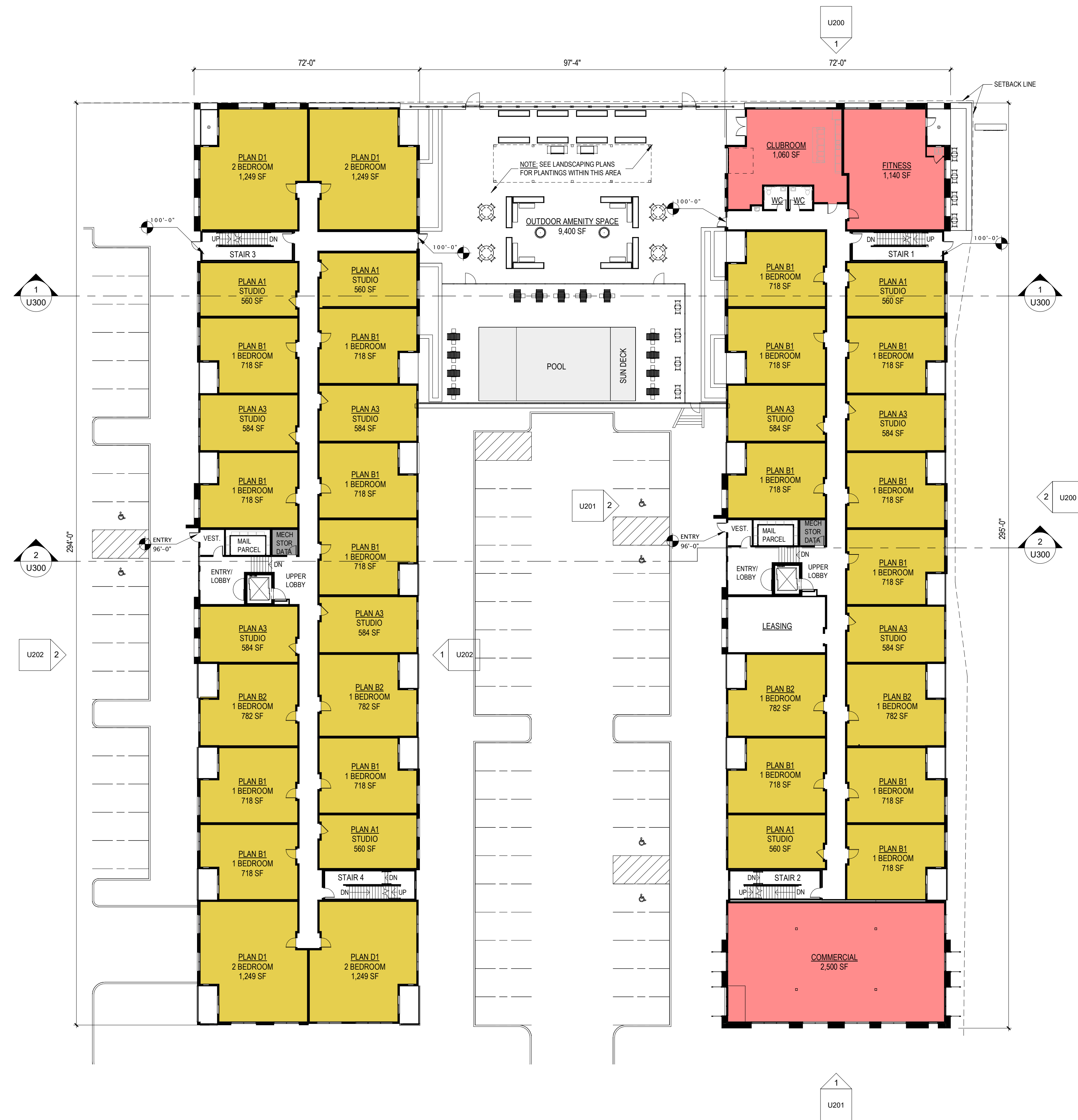
PROGRESS DOCUMENTS
These documents reflect progress and intent and may be subject to change, including additional detail. These are not final construction documents and should not be used for final bidding or construction-related purposes.

DATE OF ISSUANCE: NOVEMBER 8, 2024

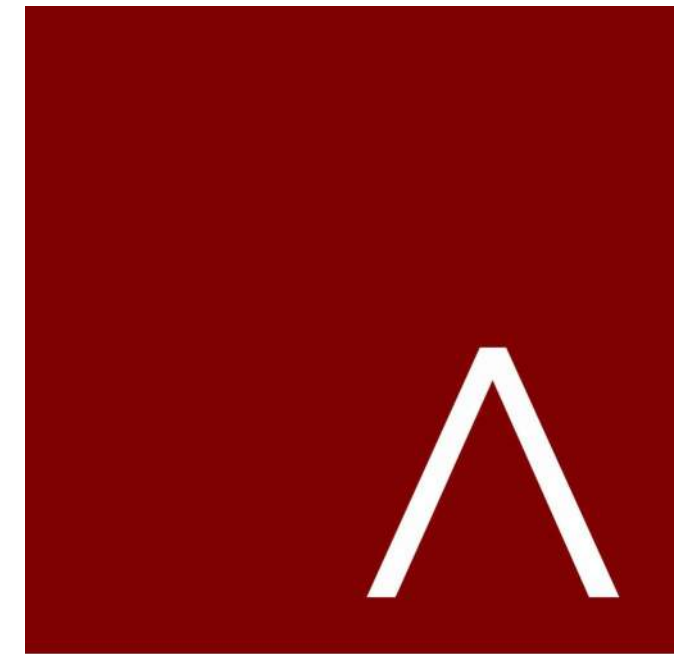
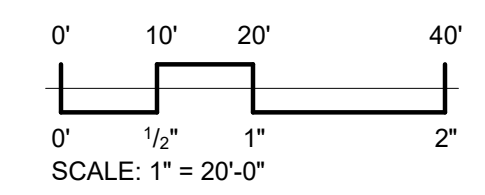
Mark	Description	Date

SHEET TITLE
LANDSCAPE PLAN

SHEET NUMBER
L100



1 FIRST FLOOR PLAN
SCALE: 1" = 20'-0"



JLA
ARCHITECTS

MADISON : MILWAUKEE
jla-ap.com

JLA PROJECT NUMBER: W22-0201



**MCKEE ROAD MIXED
USE DEVELOPMENT**

CITY OF MADISON LAND USE AND
URBAN DESIGN COMMISSION
SUBMITTAL

PROGRESS DOCUMENTS

These documents reflect progress and intent and may be subject to change, including additional detail. These are not final construction documents and should not be used for final bidding or construction-related purposes.

DATE OF ISSUANCE: OCTOBER 18, 2024

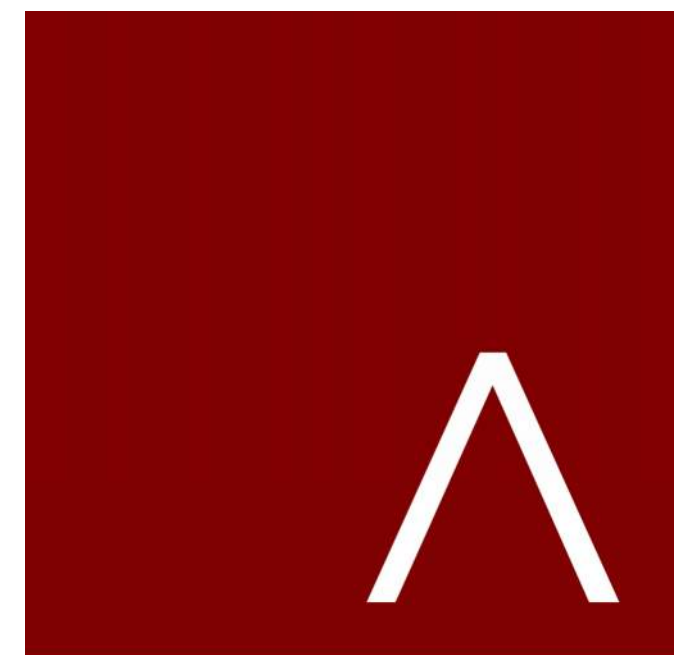
REVISION SCHEDULE		
Mark	Description	Date

SHEET TITLE

FIRST FLOOR PLAN

SHEET NUMBER

U101



JLA
ARCHITECTS

MADISON : MILWAUKEE
jla-ap.com

JLA PROJECT NUMBER: W22-0201



MCKEE ROAD MIXED USE DEVELOPMENT

CITY OF MADISON LAND USE AND URBAN DESIGN COMMISSION SUBMITTAL

PROGRESS DOCUMENTS

These documents reflect progress and intent and may be subject to change, including additional detail. These are not final construction documents and should not be used for final bidding or construction-related purposes.

DATE OF ISSUANCE: OCTOBER 18, 2024

REVISION SCHEDULE

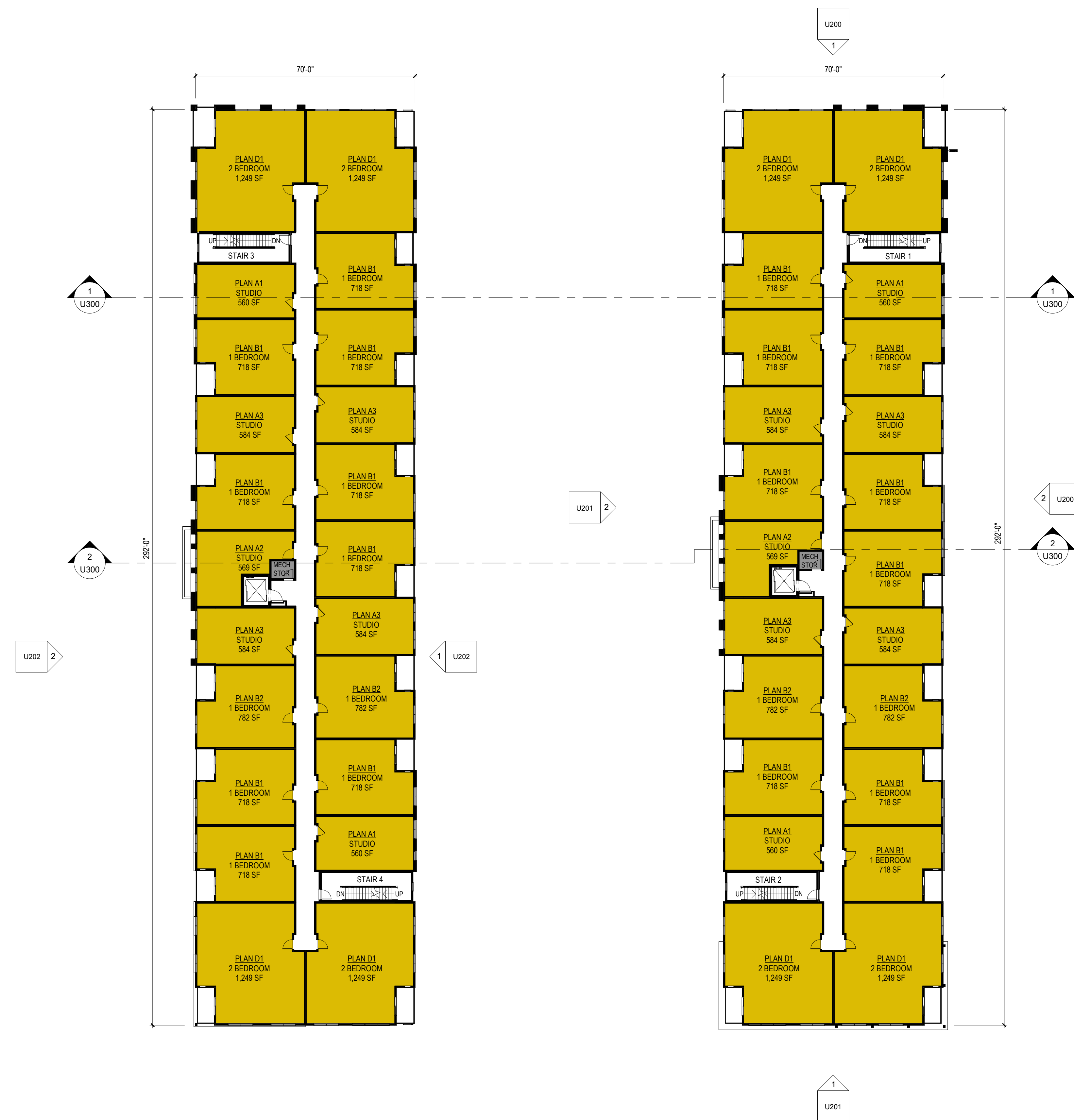
Mark	Description	Date

SHEET TITLE

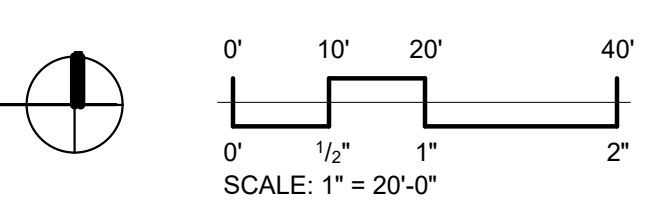
TYPICAL FLOOR PLAN

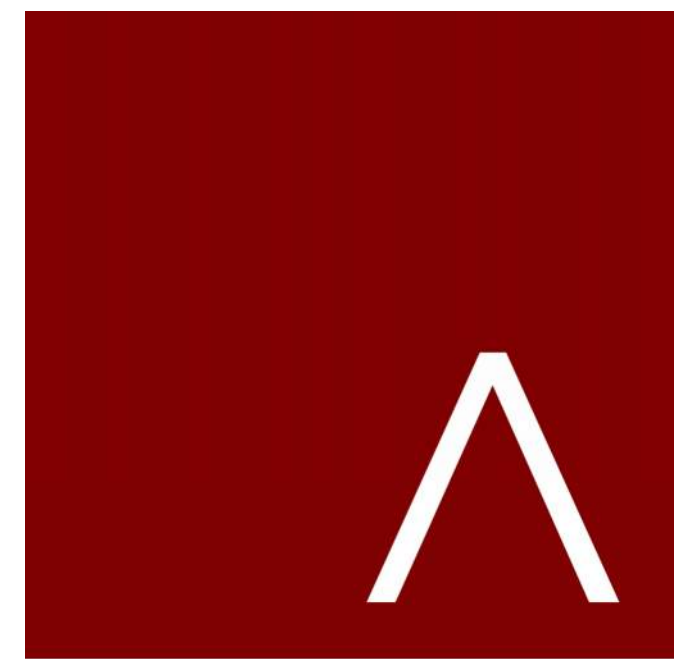
SHEET NUMBER

U102



1 SECOND FLOOR PLAN (THIRD FLOOR PLAN SIM.)
SCALE: 1" = 20'-0"





JLA
ARCHITECTS

MADISON : MILWAUKEE
jla-ap.com

JLA PROJECT NUMBER: W22-0201



MCKEE ROAD MIXED USE DEVELOPMENT

CITY OF MADISON LAND USE AND URBAN DESIGN COMMISSION SUBMITTAL

PROGRESS DOCUMENTS

These documents reflect progress and intent and may be subject to change, including additional detail. These are not final construction documents and should not be used for final bidding or construction-related purposes.

DATE OF ISSUANCE: OCTOBER 18, 2024

REVISION SCHEDULE

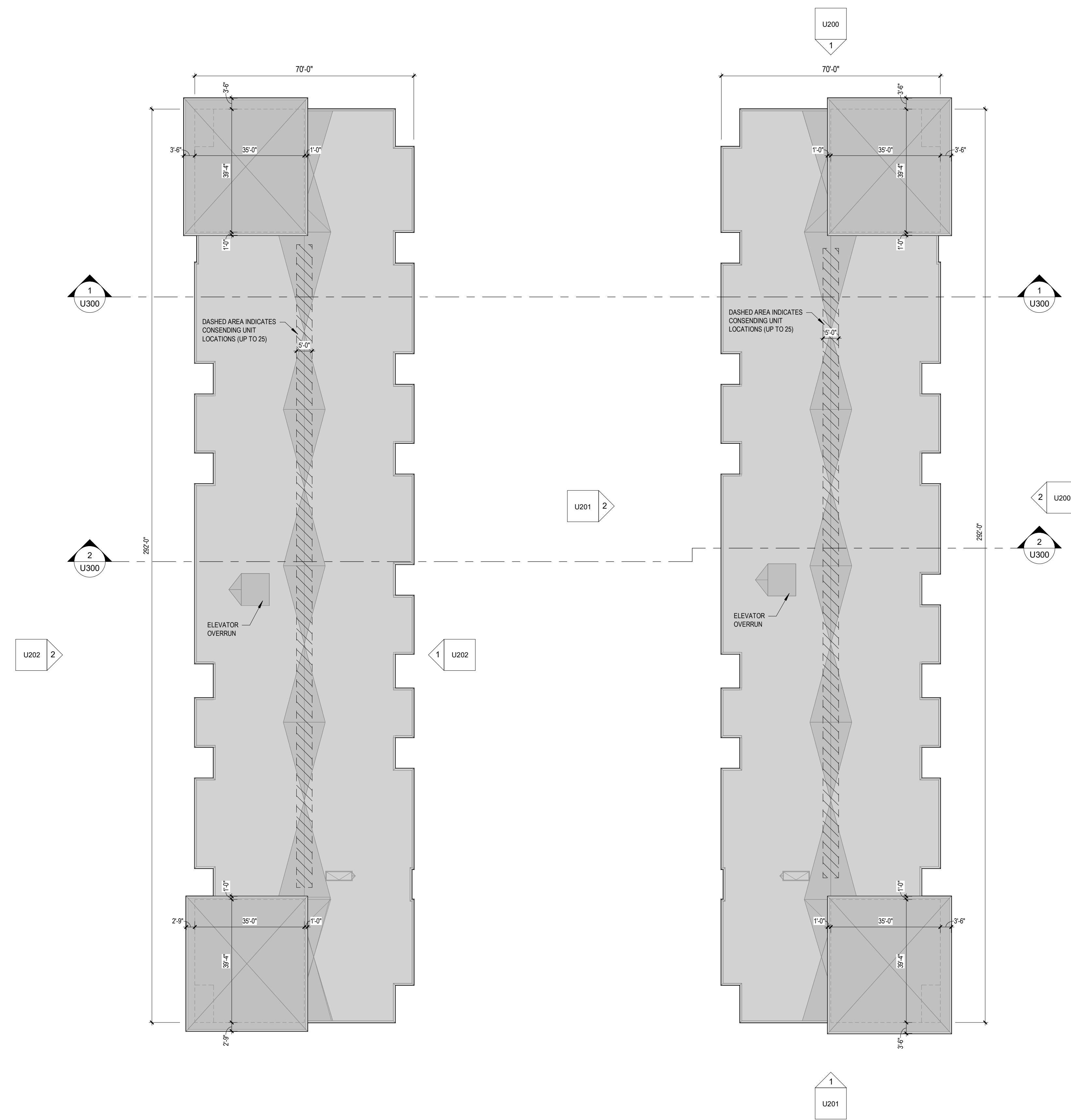
Mark	Description	Date

SHEET TITLE

ROOF PLAN

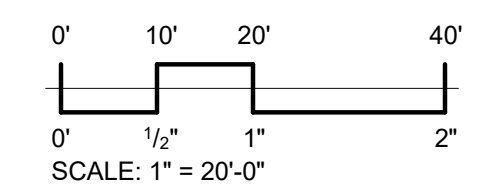
SHEET NUMBER

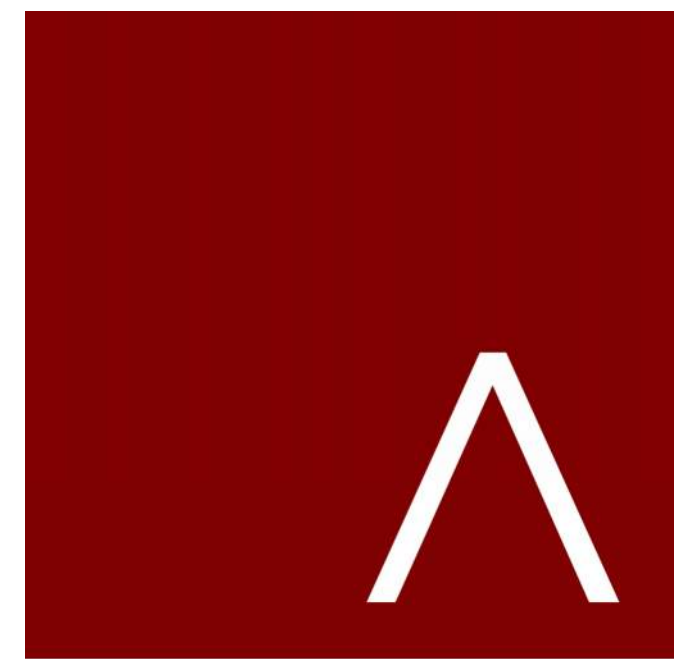
U103



1 ROOF PLAN

SCALE: 1" = 20'-0"





JLA
ARCHITECTS

MADISON : MILWAUKEE
jla-ap.com

JLA PROJECT NUMBER: W22-0201



MCKEE ROAD MIXED
USE DEVELOPMENT

CITY OF MADISON LAND USE AND
URBAN DESIGN COMMISSION
SUBMITTAL

PROGRESS DOCUMENTS

These documents reflect progress and intent and may be subject to change, including additional detail. These are not final construction documents and should not be used for final bidding or construction-related purposes.

DATE OF ISSUANCE: OCTOBER 18, 2024

REVISION SCHEDULE

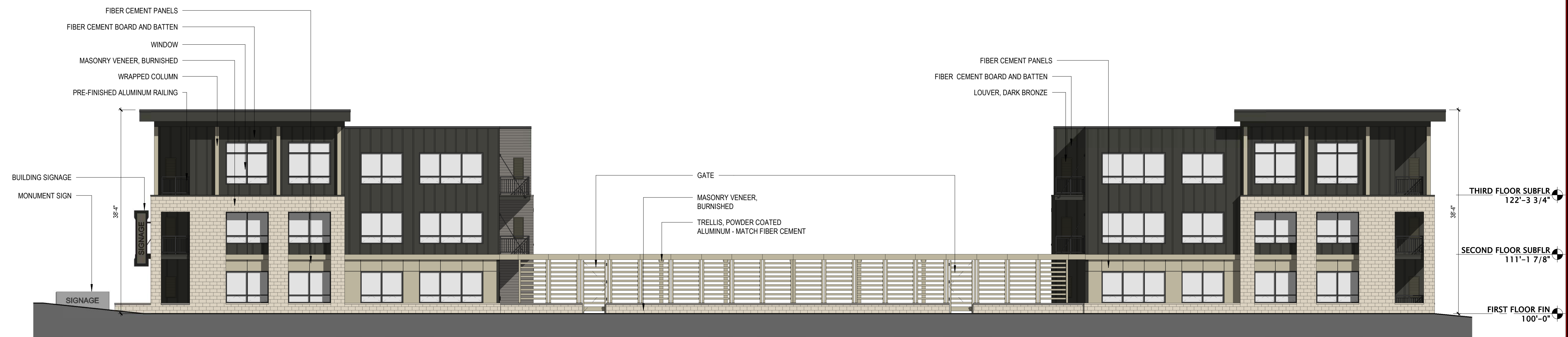
Mark	Description	Date

SHEET TITLE

EXTERIOR ELEVATIONS

SHEET NUMBER

U200



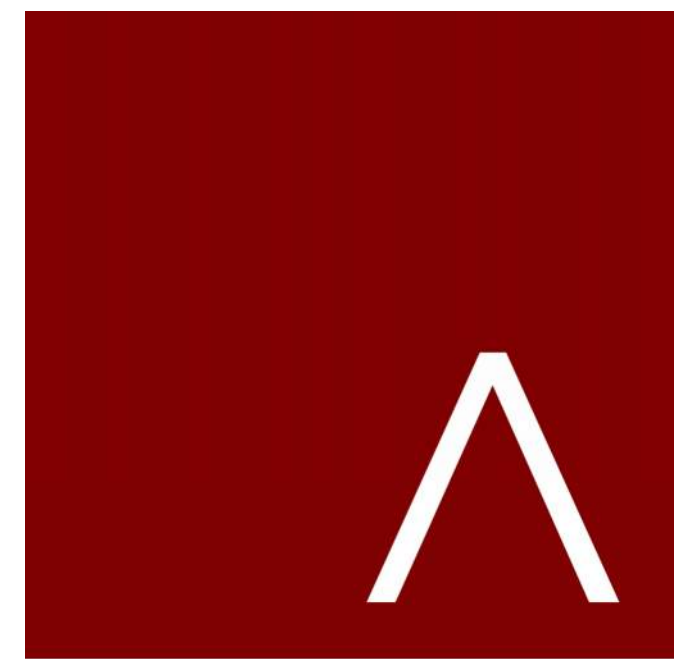
1 NORTH ELEVATION

SCALE: 3/32" = 1'-0"



2 EAST ELEVATION - A1 BLDG

SCALE: 3/32" = 1'-0"



JLA
ARCHITECTS

MADISON : MILWAUKEE
jla-ap.com

JLA PROJECT NUMBER: W22-0201



MCKEE ROAD MIXED USE DEVELOPMENT

CITY OF MADISON LAND USE AND URBAN DESIGN COMMISSION SUBMITTAL

PROGRESS DOCUMENTS

These documents reflect progress and intent and may be subject to change, including additional detail. These are not final construction documents and should not be used for final bidding or construction-related purposes.

DATE OF ISSUANCE: OCTOBER 18, 2024

REVISION SCHEDULE

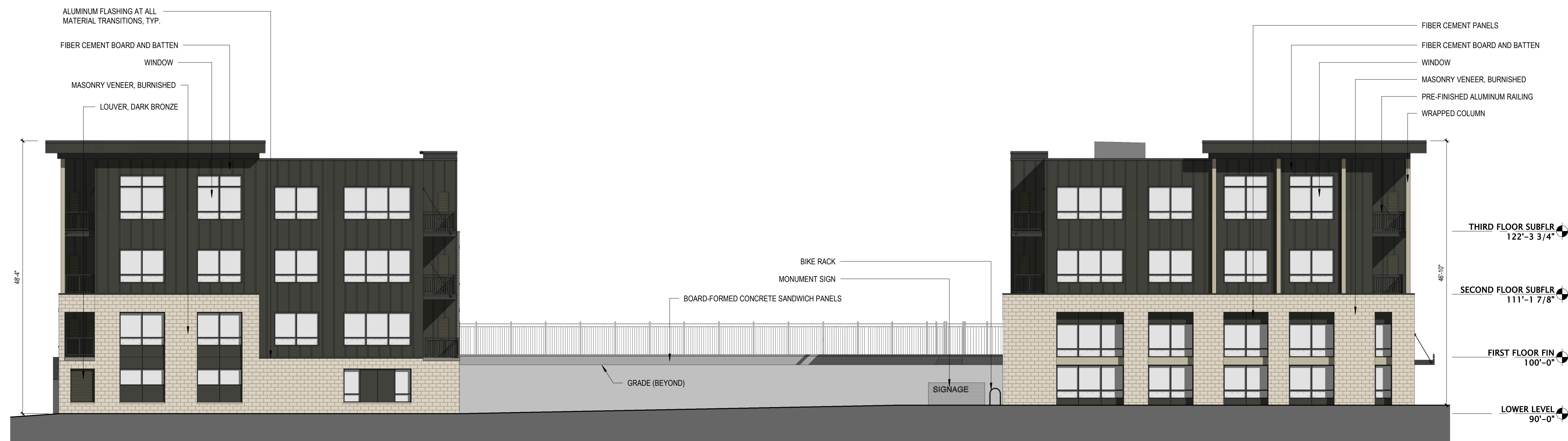
Mark	Description	Date

SHEET TITLE

EXTERIOR ELEVATIONS

SHEET NUMBER

U201



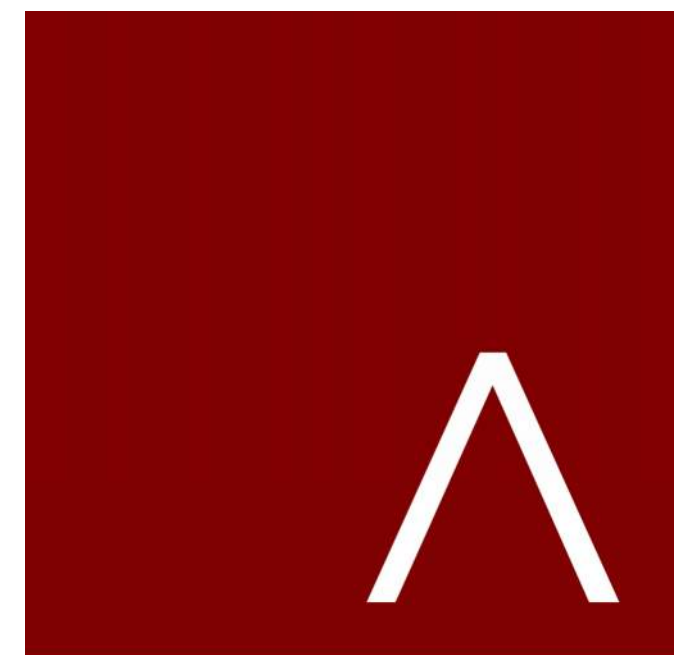
1 SOUTH ELEVATION

SCALE: 3/32" = 1'-0"



2 WEST ELEVATION - A1 BLDG

SCALE: 3/32" = 1'-0"



JLA
ARCHITECTS

MADISON : MILWAUKEE
jla-ap.com

JLA PROJECT NUMBER: W22-0201



MCKEE ROAD MIXED
USE DEVELOPMENT

CITY OF MADISON LAND USE AND
URBAN DESIGN COMMISSION
SUBMITTAL

PROGRESS DOCUMENTS

These documents reflect progress and intent and may be subject to change, including additional detail. These are not final construction documents and should not be used for final bidding or construction-related purposes.

DATE OF ISSUANCE: OCTOBER 18, 2024

REVISION SCHEDULE

Mark	Description	Date

SHEET TITLE

EXTERIOR ELEVATIONS

SHEET NUMBER

U202



1 EAST ELEVATION - A2 BLDG

SCALE: 3/32" = 1'-0"

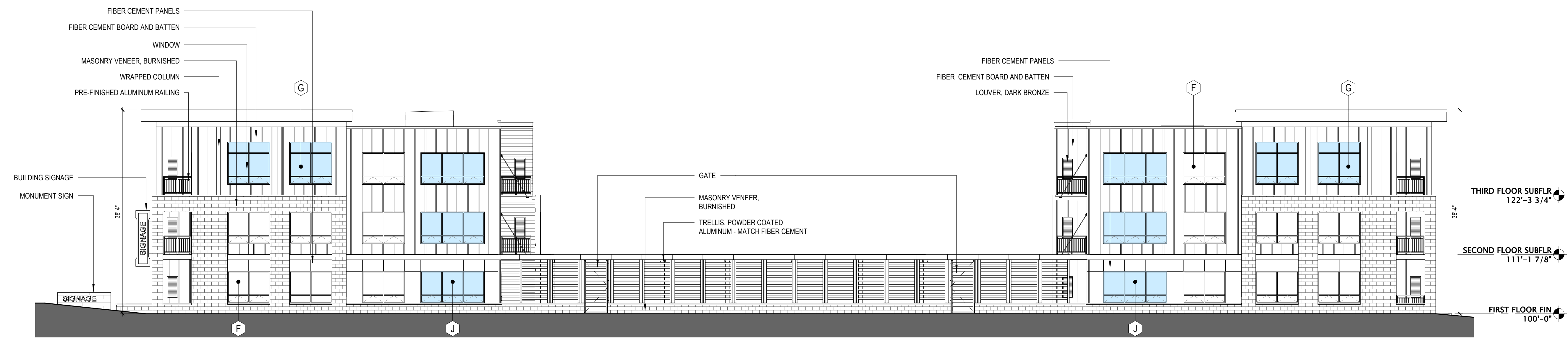


2 WEST ELEVATION - A2 BLDG

SCALE: 3/32" = 1'-0"

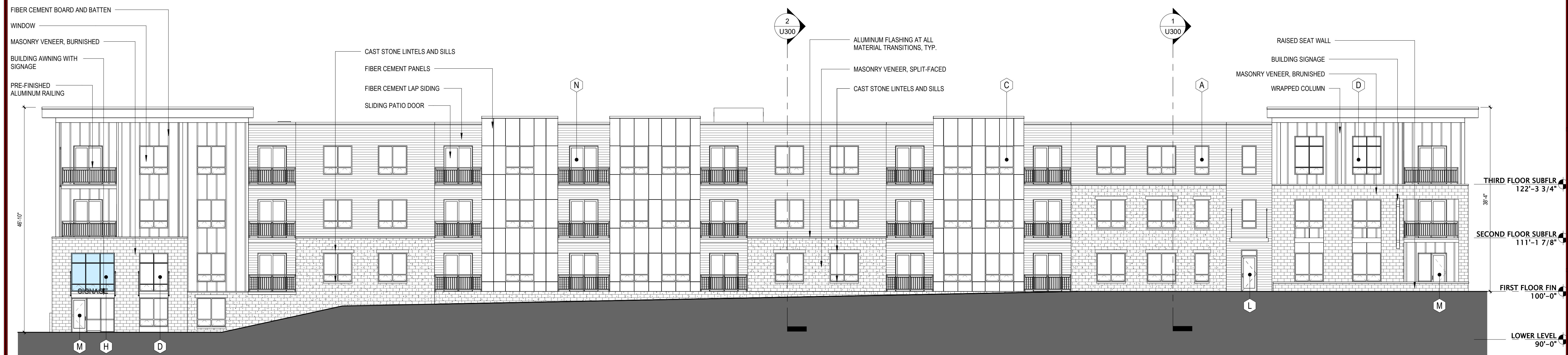
BIRD GLASS KEYNOTES - SEE SALCULATIONS

- A WINDOW: 3'-0"W x 6'-0"H
 - B WINDOW: 6'-0"W x 3'-0"H
 - C WINDOW: 6'-0"W x 6'-0"H
 - D WINDOW: 6'-0"W x 8'-0"H
 - E WINDOW: 8'-0"W x 3'-0"H
 - F WINDOW: 8'-0"W x 6'-0"H
 - G WINDOW: 8'-0"W x 8'-0"H
 - H WINDOW: 9'-0"W x 8'-0"H
 - J WINDOW: 12'-0"W x 6'-0"H
 - K SINGLE DOOR: 3'-0"W x 7'-0"H
 - L SINGLE DOOR w/ TRANSOM: 3'-0"W x 9'-4"H
 - M SINGLE DOOR w/ SIDELITE: 6'-0"W x 8'-0"H
 - N PATIO DOOR / DOUBLE DOOR: 6'-0"W x 8'-0"H
- BIRD GLASS LOCATIONS



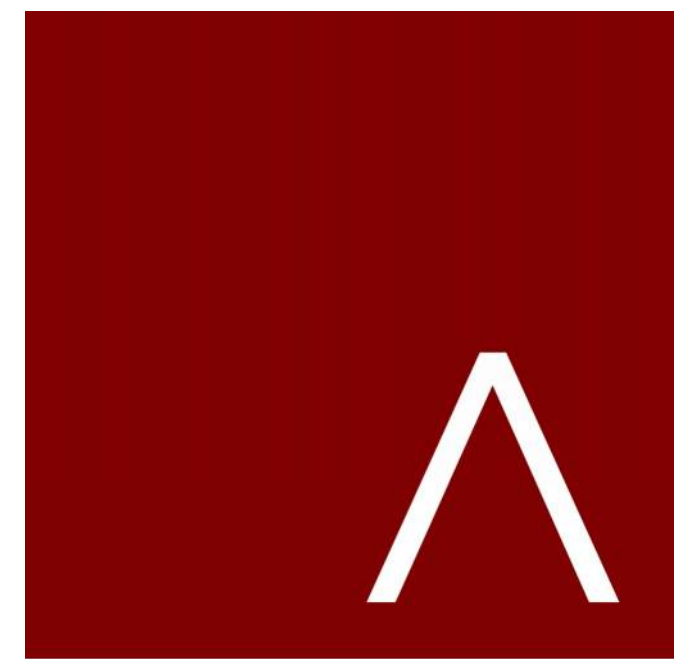
1 NORTH ELEVATION (BIRD GLASS)

SCALE: 3/32" = 1'-0"



2 EAST ELEVATION - A1 BLDG (BIRD GLASS)

SCALE: 3/32" = 1'-0"



JLA
ARCHITECTS

MADISON : MILWAUKEE
jla-ap.com

JLA PROJECT NUMBER: W22-0201



MCKEE ROAD MIXED USE DEVELOPMENT

CITY OF MADISON LAND USE AND URBAN DESIGN COMMISSION SUBMITTAL

PROGRESS DOCUMENTS

These documents reflect progress and intent and may be subject to change, including additional detail. These are not final construction documents and should not be used for final bidding or construction-related purposes.

DATE OF ISSUANCE: OCTOBER 18, 2024

REVISION SCHEDULE

Mark	Description	Date

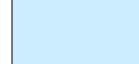
SHEET TITLE

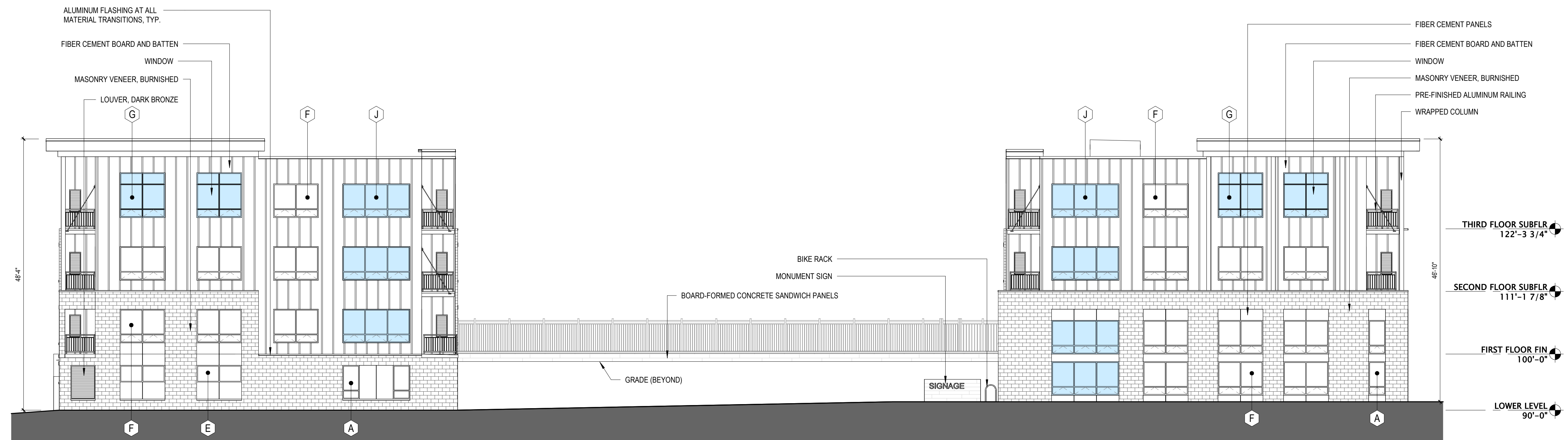
EXTERIOR ELEVATIONS- BIRGLASS

SHEET NUMBER

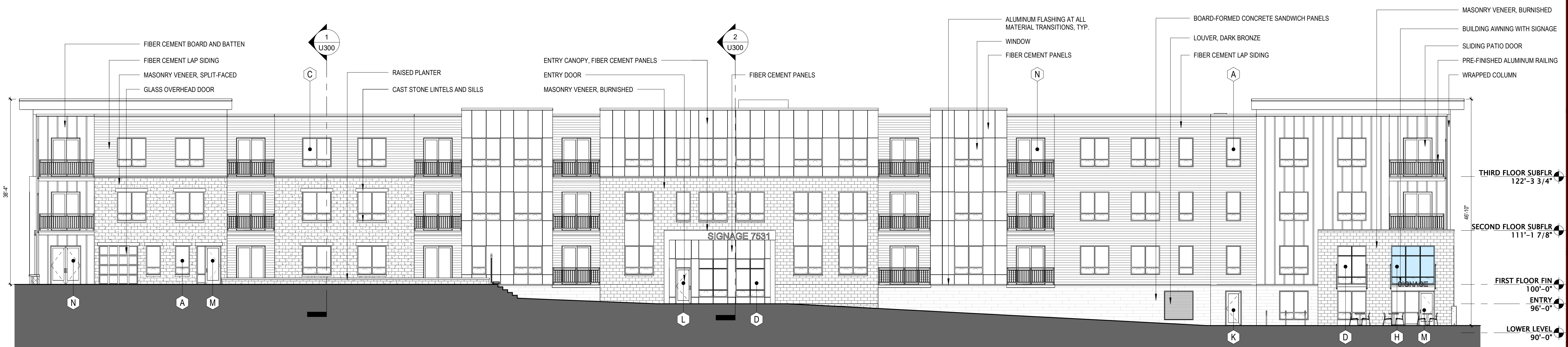
U210

BIRD GLASS KEYNOTES - SEE SALCULATIONS

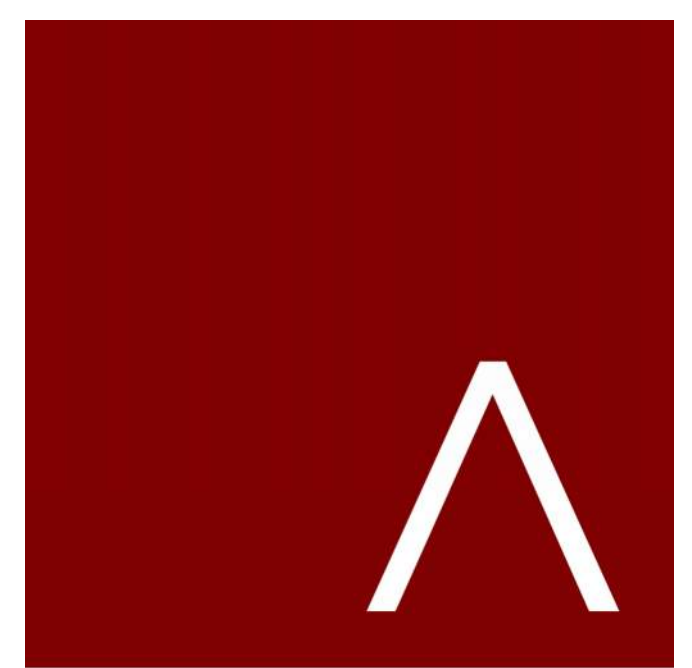
A WINDOW: 3'-0"W x 6'-0"H	K SINGLE DOOR: 3'-0"W x 7'-0"H
B WINDOW: 6'-0"W x 3'-0"H	L SINGLE DOOR w/ TRANSOM: 3'-0"W x 9'-4"H
C WINDOW: 6'-0"W x 6'-0"H	M SINGLE DOOR w/ SIDELITE: 6'-0"W x 8'-0"H
D WINDOW: 6'-0"W x 8'-0"H	N PATIO DOOR / DOUBLE DOOR: 6'-0"W x 8'-0"H
E WINDOW: 8'-0"W x 3'-0"H	
F WINDOW: 8'-0"W x 6'-0"H	
G WINDOW: 8'-0"W x 8'-0"H	
H WINDOW: 9'-0"W x 8'-0"H	
J WINDOW: 12'-0"W x 6'-0"H	 BIRD GLASS LOCATIONS



1 SOUTH ELEVATION (BIRD GLASS)
SCALE: 3/32" = 1'-0"



2 WEST ELEVATION - A1 BLDG (BIRD GLASS)
SCALE: 3/32" = 1'-0"



JLA
ARCHITECTS

MADISON : MILWAUKEE
jla-ap.com

JLA PROJECT NUMBER: W22-0201



MCKEE ROAD MIXED
USE DEVELOPMENT

CITY OF MADISON LAND USE AND
URBAN DESIGN COMMISSION
SUBMITTAL

PROGRESS DOCUMENTS

These documents reflect progress and intent and may be subject to change, including additional detail. These are not final construction documents and should not be used for final bidding or construction-related purposes.

DATE OF ISSUANCE: OCTOBER 18, 2024

REVISION SCHEDULE

Mark	Description	Date
------	-------------	------

SHEET TITLE

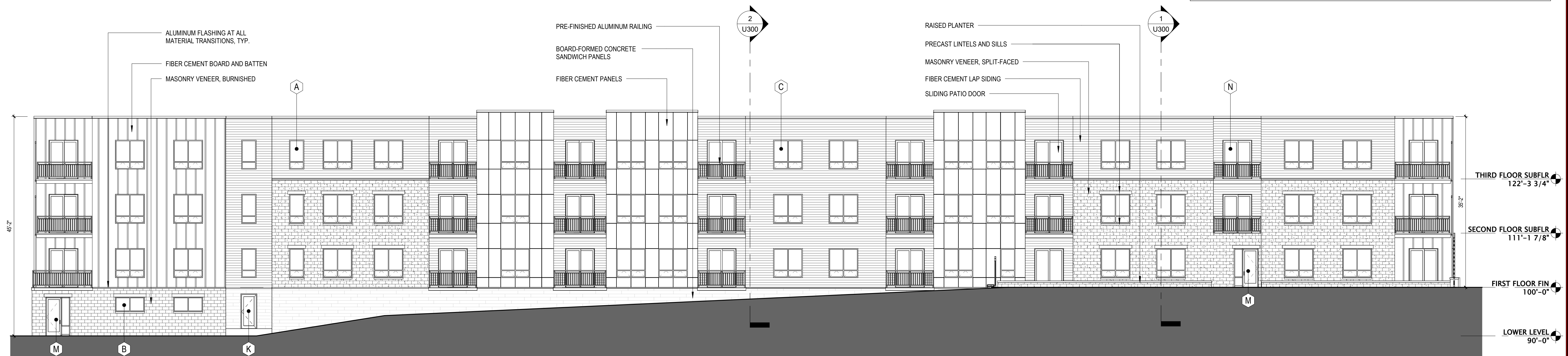
**EXTERIOR ELEVATIONS-
BIRGLASS**

SHEET NUMBER

U211

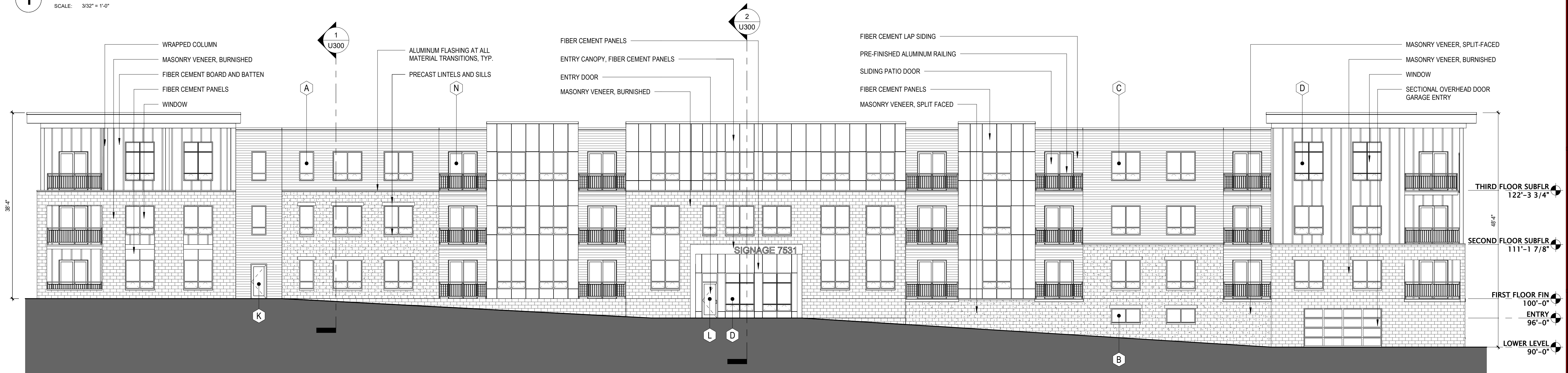
BIRD GLASS KEYNOTES - SEE SALCULATIONS

- A WINDOW: 3'-0"W x 6'-0"H
 - B WINDOW: 6'-0"W x 3'-0"H
 - C WINDOW: 6'-0"W x 6'-0"H
 - D WINDOW: 6'-0"W x 8'-0"H
 - E WINDOW: 8'-0"W x 3'-0"H
 - F WINDOW: 8'-0"W x 6'-0"H
 - G WINDOW: 8'-0"W x 8'-0"H
 - H WINDOW: 9'-0"W x 8'-0"H
 - J WINDOW: 12'-0"W x 6'-0"H
 - K SINGLE DOOR: 3'-0"W x 7'-0"H
 - L SINGLE DOOR w/ TRANSOM: 3'-0"W x 9'-4"H
 - M SINGLE DOOR w/ SIDELITE: 6'-0"W x 8'-0"H
 - N PATIO DOOR / DOUBLE DOOR: 6'-0"W x 8'-0"H
- BIRD GLASS LOCATIONS



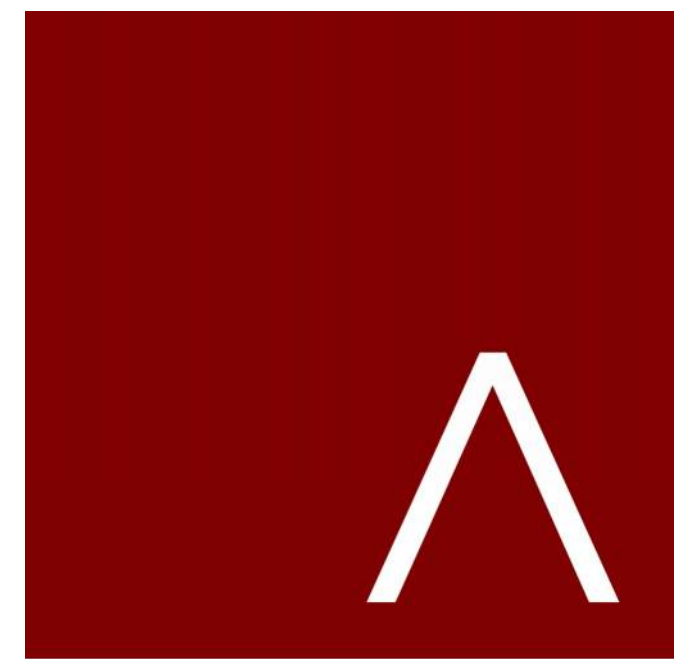
1 EAST ELEVATION - A2 BLDG (BIRD GLASS)

SCALE: 3/32" = 1'-0"



2 WEST ELEVATION - A2 BLDG (BIRD GLASS)

SCALE: 3/32" = 1'-0"



JLA
ARCHITECTS

MADISON : MILWAUKEE
jla-ap.com

JLA PROJECT NUMBER: W22-0201



MCKEE ROAD MIXED USE DEVELOPMENT

CITY OF MADISON LAND USE AND URBAN DESIGN COMMISSION SUBMITTAL

PROGRESS DOCUMENTS

These documents reflect progress and intent and may be subject to change, including additional detail. These are not final construction documents and should not be used for final bidding or construction-related purposes.

DATE OF ISSUANCE: OCTOBER 18, 2024

REVISION SCHEDULE

Mark	Description	Date

SHEET TITLE

EXTERIOR ELEVATIONS- BIRGLASS

SHEET NUMBER

U212

From: [Patrick Terry](#)
To: [Harris, Heather](#); [All Alders](#)
Cc: [Windsor, Liz](#); [Kapusta-Pofahl, Karen](#)
Subject: RE: Public comment- Presentation for file #85816
Date: Tuesday, December 10, 2024 12:49:48 PM
Attachments: [image002.png](#)
[image003.png](#)
[image004.png](#)
[image005.png](#)
[image006.png](#)
[image007.png](#)
[image008.png](#)
[image010.png](#)

Good Afternoon Alders –

I submitted the presentation this morning – just in case it was needed.

I am aware that I and Alex Weis are registered in favor, and able to answer questions. We register proactively, and didn't mean to kick the project out of consent agenda.

We would like the item on consent agenda – if no other people have registered to speak.

PATRICK TERRY
Project Manager



 D: (608) 442-3823
C: (608) 333-3428

 pterry@jla-ap.com

 jla-ap.com

 **JLA**
ARCHITECTS

MADISON | MILWAUKEE | DENVER

*Recognized as a 2024 Best Places to Work by
the Milwaukee Business Journal*

Notice: This message is intended exclusively for the individual or entity to which it is addressed. This communication may contain information that is proprietary, privileged, or confidential. If you are not the named addressee, you are not authorized to read, print, retain, copy, or disseminate this message or any part of it. If you have received this message in error, please notify the sender immediately by e-mail or fax – and delete all copies of this message.

From: Harris, Heather <HHarris@cityofmadison.com>
Sent: Tuesday, December 10, 2024 12:45 PM
To: All Alders <allalders@cityofmadison.com>
Cc: Windsor, Liz <LWindsor@cityofmadison.com>; Kapusta-Pofahl, Karen <KKapusta-Pofahl@cityofmadison.com>
Subject: Public comment- Presentation for file #85816



CAUTION: External email.

Good afternoon,

The attached presentation was submitted by a registrant on agenda item #19 (file# 85816). There are currently no registrants wishing to speak on this item, so I'm not sure if it will make it on the Consent Agenda for tonight.

The individual is currently registered on this item as "in support" and "available to answer questions".

The presentation has been attached to the Legistar file, but please let me know if any other action is needed.

Kindest regards,

Heather M. Harris, WCMC

Pronouns: she/hers

City-County Building Room 105
210 Martin Luther King Jr. Blvd.
(608) 266-4601
www.cityofmadison.com/clerk
@MadisonWIClerk

"We exist to assist"

From: Patrick Terry <pterry@jla-ap.com>
Sent: Tuesday, December 10, 2024 7:36 AM
To: McNabola, Lisa <LMcNabola@cityofmadison.com>
Subject: 6702 Mader Drive - Common Council Presentation

Caution: This email was sent from an external source. Avoid unknown links and attachments.

Good Morning,

Please find our Common Council presentation for Mader Dr attached.

Do you know if we are on the consent agenda?

Thanks for your help throughout this process.

PATRICK TERRY

Project Manager



D: (608) 442-3823
C: (608) 333-3428



perry@jla-ap.com



jla-ap.com



JLA
ARCHITECTS

MADISON | MILWAUKEE | DENVER

*Recognized as a 2024 Best Places to Work by
the Milwaukee Business Journal*

Notice: This message is intended exclusively for the individual or entity to which it is addressed. This communication may contain information that is proprietary, privileged, or confidential. If you are not the named addressee, you are not authorized to read, print, retain, copy, or disseminate this message or any part of it. If you have received this message in error, please notify the sender immediately by e-mail or fax – and delete all copies of this message.