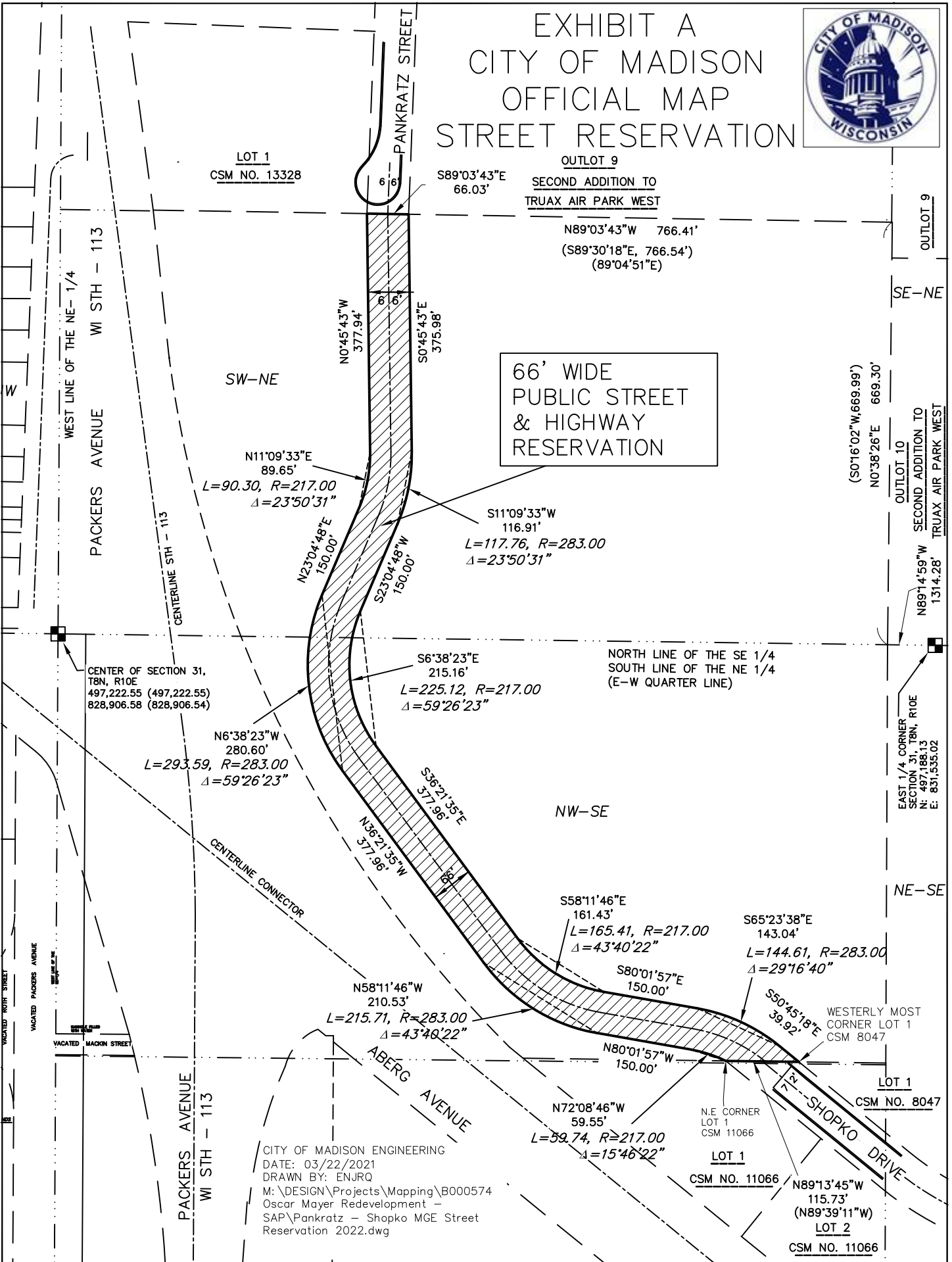


# EXHIBIT A CITY OF MADISON OFFICIAL MAP STREET RESERVATION



**66' WIDE  
PUBLIC STREET  
& HIGHWAY  
RESERVATION**



LOT 1  
CSM NO. 13328

OUTLOT 9  
SECOND ADDITION TO  
TRUAX AIR PARK WEST

N89°03'43"W 766.41'  
(S89°30'18"E, 766.54')  
(89°04'51"E)

SW-NE

66' WIDE  
PUBLIC STREET  
& HIGHWAY  
RESERVATION

N11°09'33"E  
89.65'  
L=90.30, R=217.00  
Δ=23°50'31"

S11°09'33"W  
116.91'  
L=117.76, R=283.00  
Δ=23°50'31"

N0°45'43"W  
377.94'  
S0°45'43"E  
375.98'

N23°04'48"E  
150.00'  
S23°04'48"W  
150.00'

S6°38'23"E  
215.16'  
L=225.12, R=217.00  
Δ=59°26'23"

NORTH LINE OF THE SE 1/4  
SOUTH LINE OF THE NE 1/4  
(E-W QUARTER LINE)

N6°38'23"W  
280.60'  
L=293.59, R=283.00  
Δ=59°26'23"

NW-SE

S56°21'35"E  
377.96'  
N56°21'35"W  
377.96'

S58°11'46"E  
161.43'  
L=165.41, R=217.00  
Δ=43°40'22"

S65°23'38"E  
143.04'  
L=144.61, R=283.00  
Δ=29°16'40"

N58°11'46"W  
210.53'  
L=215.71, R=283.00  
Δ=43°40'22"

S80°01'57"E  
150.00'

S50°45'18"E  
39.92'

WESTERLY MOST  
CORNER LOT 1  
CSM 8047

N72°08'46"W  
59.55'  
L=59.74, R=217.00  
Δ=15°46'22"

N.E. CORNER  
LOT 1  
CSM 11066

LOT 1  
CSM NO. 11066

N89°13'45"W  
115.73'  
(N89°39'11"W)  
LOT 2  
CSM NO. 11066

CENTER OF SECTION 31,  
T8N, R10E  
497,222.55 (497,222.55)  
828,906.58 (828,906.54)

(S0°16'02"W, 669.99')  
N0°38'26"E 669.30'

OUTLOT 10  
SECOND ADDITION TO  
TRUAX AIR PARK WEST  
N89°14'59"W  
1314.28'

EAST 1/4 CORNER  
SECTION 31, T8N, R10E  
N: 497,188.13  
E: 831,535.02

CITY OF MADISON ENGINEERING  
DATE: 03/22/2021  
DRAWN BY: ENJRC  
M: \DESIGN\Projects\Mapping\B000574  
Oscar Mayer Redevelopment -  
SAP\Pankratz - Shopko MGE Street  
Reservation 2022.dwg

PACKERS AVENUE  
WI STH - 113

PACKERS AVENUE  
WI STH - 113

ABERG AVENUE

SHOPKO DRIVE

LOT 1  
CSM NO. 8047

OUTLOT 9  
SE-NE

NE-SE

WEST LINE OF THE NE- 1/4

CENTERLINE STH - 113

CENTERLINE CONNECTOR

VACATED SOUTH STREET

VACATED PACKERS AVENUE

VACATED MACKIN STREET