

City of Madison Urban Forestry Task Force



Urban Forestry Task Force Background

- Review available research and best practices on promoting a vibrant, healthy and sustainable urban forest
- Review City policies, practices, programs, and operations
- Task force comprised of alders, staff from Forestry, Engineering, Planning, residents



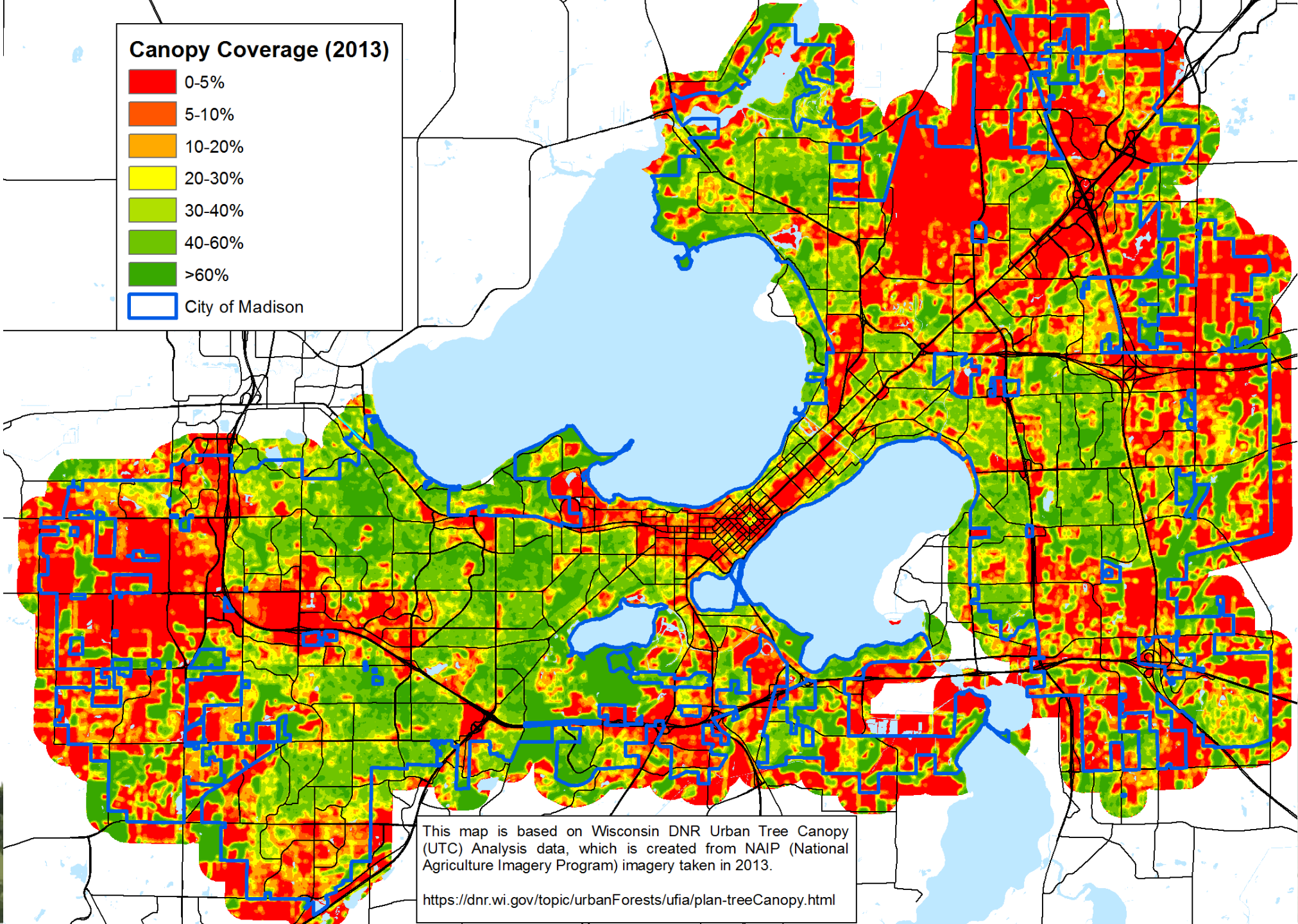
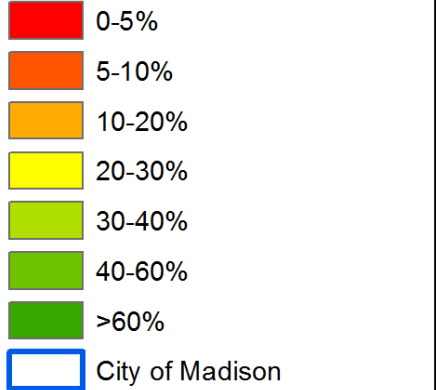
Value of Trees

- Neighborhood character and appearance
- Temperature reduction
- Stormwater
- CO₂ and air pollution reduction
- Urban habitat
- Mental and physical health



Canopy Coverage

Canopy Coverage (2013)



This map is based on Wisconsin DNR Urban Tree Canopy (UTC) Analysis data, which is created from NAIP (National Agriculture Imagery Program) imagery taken in 2013.

<https://dnr.wi.gov/topic/urbanForests/ufia/plan-treeCanopy.html>



Context of Trees in Madison

- Trees on Private Property
- Trees on Public Properties
- Street trees (in right of way)



Private Trees – Urban Design Ordinances

- Several UDD specify allowable/preferred tree species
 - *Recommendation: Revise urban design district ordinances MGO 33.24 (8-15) to remove list of allowable trees species and grant this authority to the City Forester.*
- Species ordinances are facing threats (ie EAB) and no longer optimal choices
- Limits species diversity of canopy – can increase impact of any individual threat



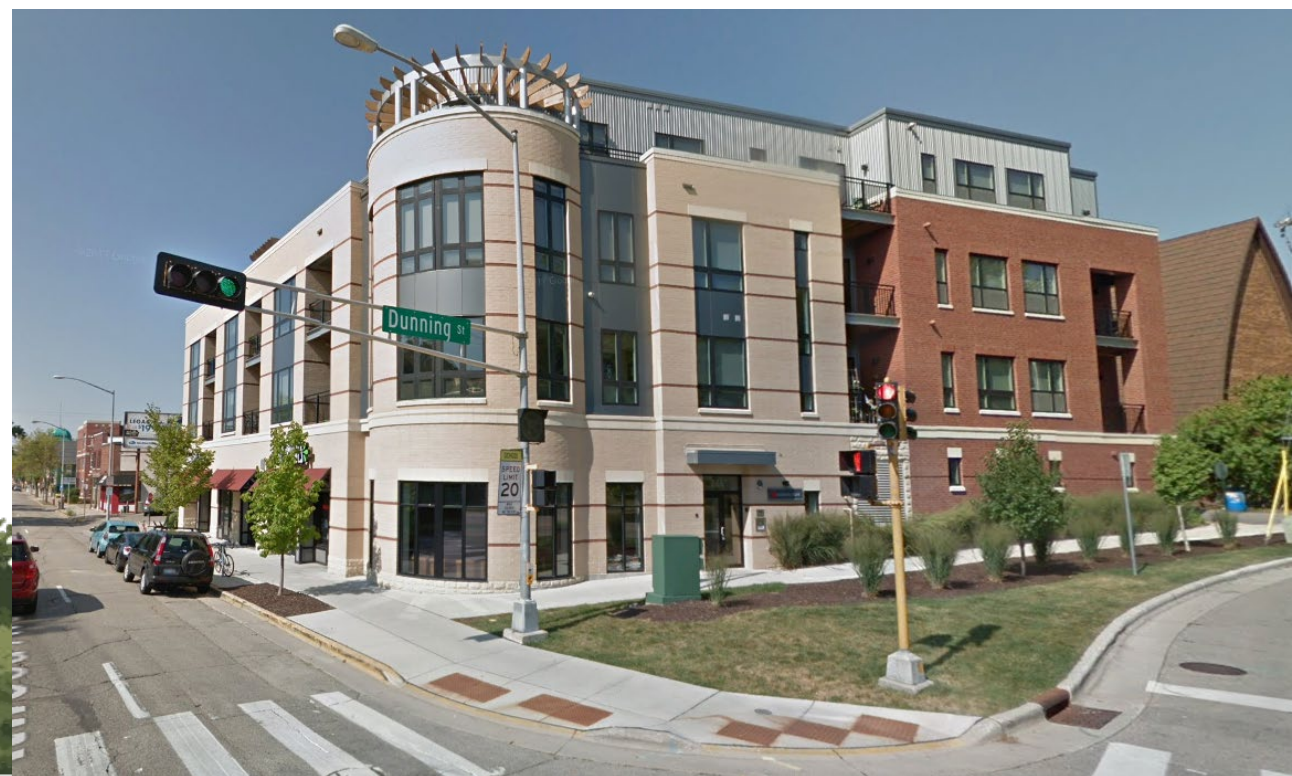
Private Trees - Zoning

- Landscape Section - *Updated in 2013*
 - Parking area landscaping
 - 5 or 8% of parking area in landscape islands
 - Roughly one tree per 8-10 parking stalls
- No trees required in parking lots prior to 1984 – legal non-conforming (grandfathered)
- *Recommendation: Evaluated applicability triggers in landscape section*



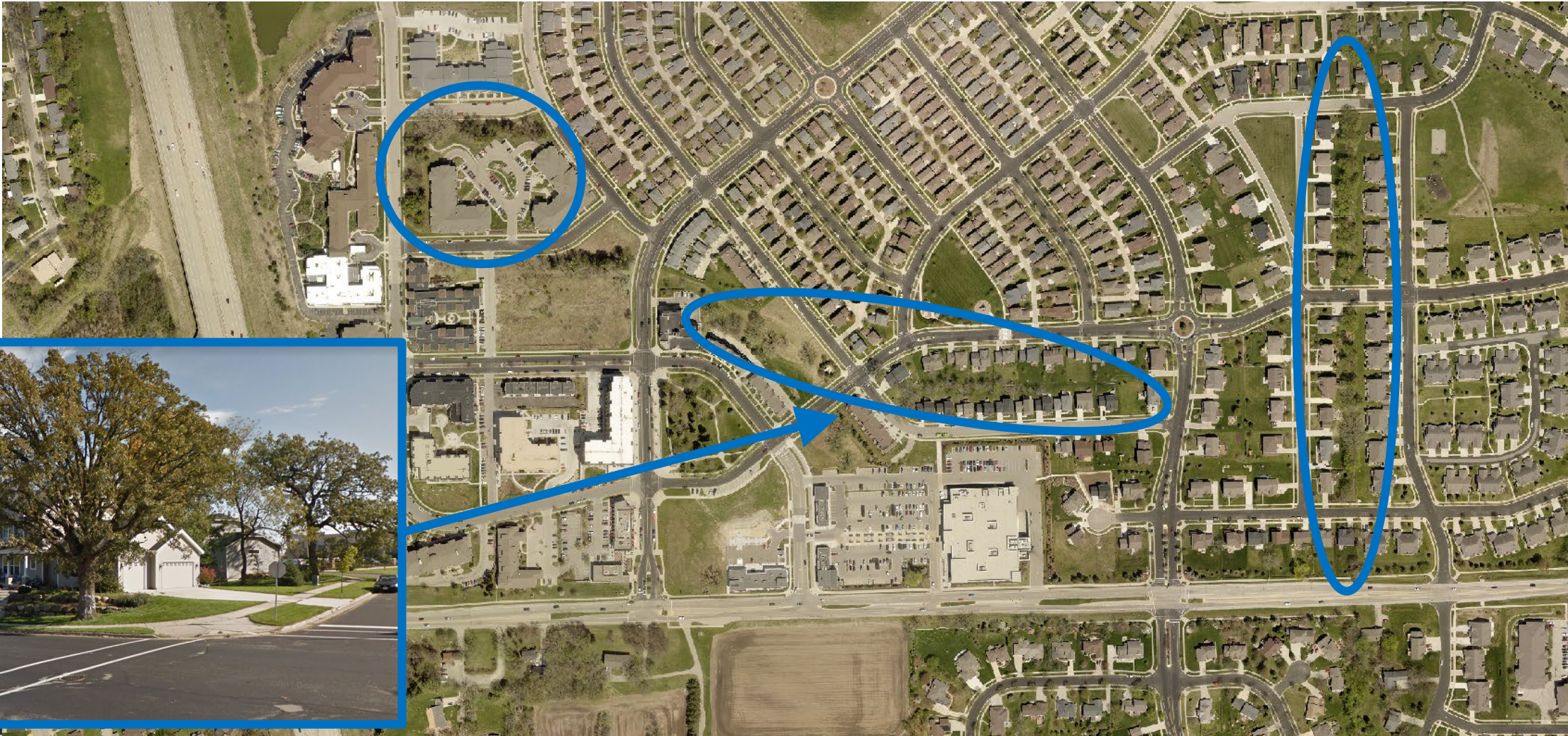
Private Trees - Zoning

- Landscape Section - *Updated in 2013*
 - Development Frontage Landscaping
 - One tree required every 30 ft between development edge (building, parking, etc.) and public street
 - *Waived when buildings are at street*
 - Mixed use and downtown zoning districts require minimal setbacks
 - Limited space for trees on private property near streets
 - *Recommendation: Evaluate minimum setback to determine if adjustments are needed*



Private Trees - Zoning

- Tree preservation encouraged but not required by zoning and subdivision codes
- *Recommendation: evaluate tree preservation ordinance*

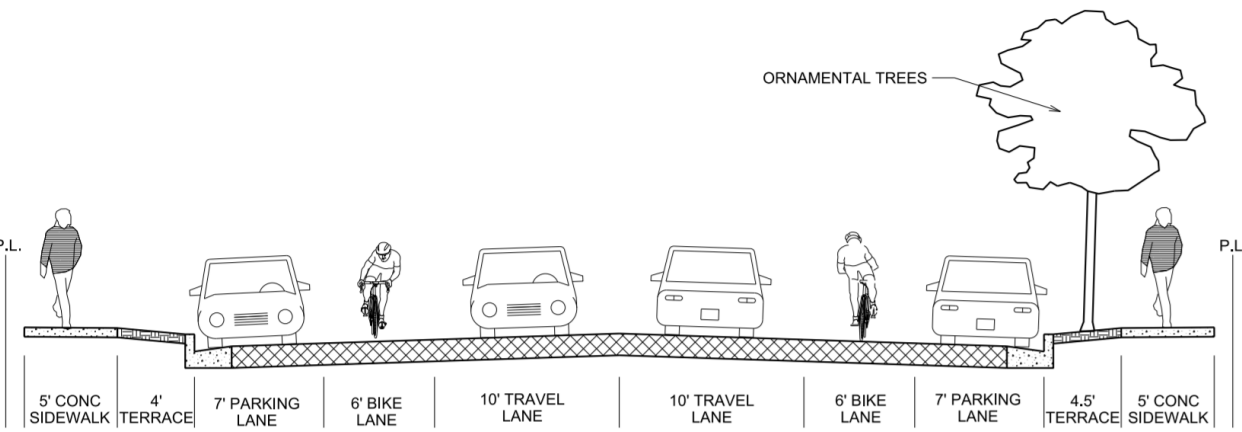


Private Trees – Single Family Homes

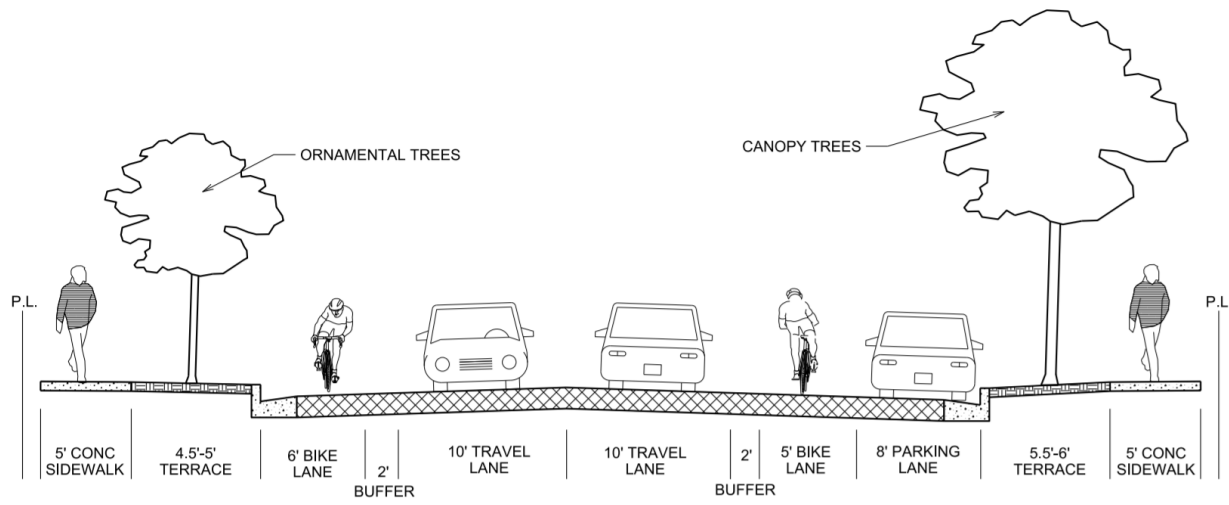
- No tree/landscape requirements for one and two family homes in zoning code
- *Recommendation: Evaluate other mechanism to encourage tree plantings on new lots, such as neighborhood covenants*



Street Trees – a contest for space



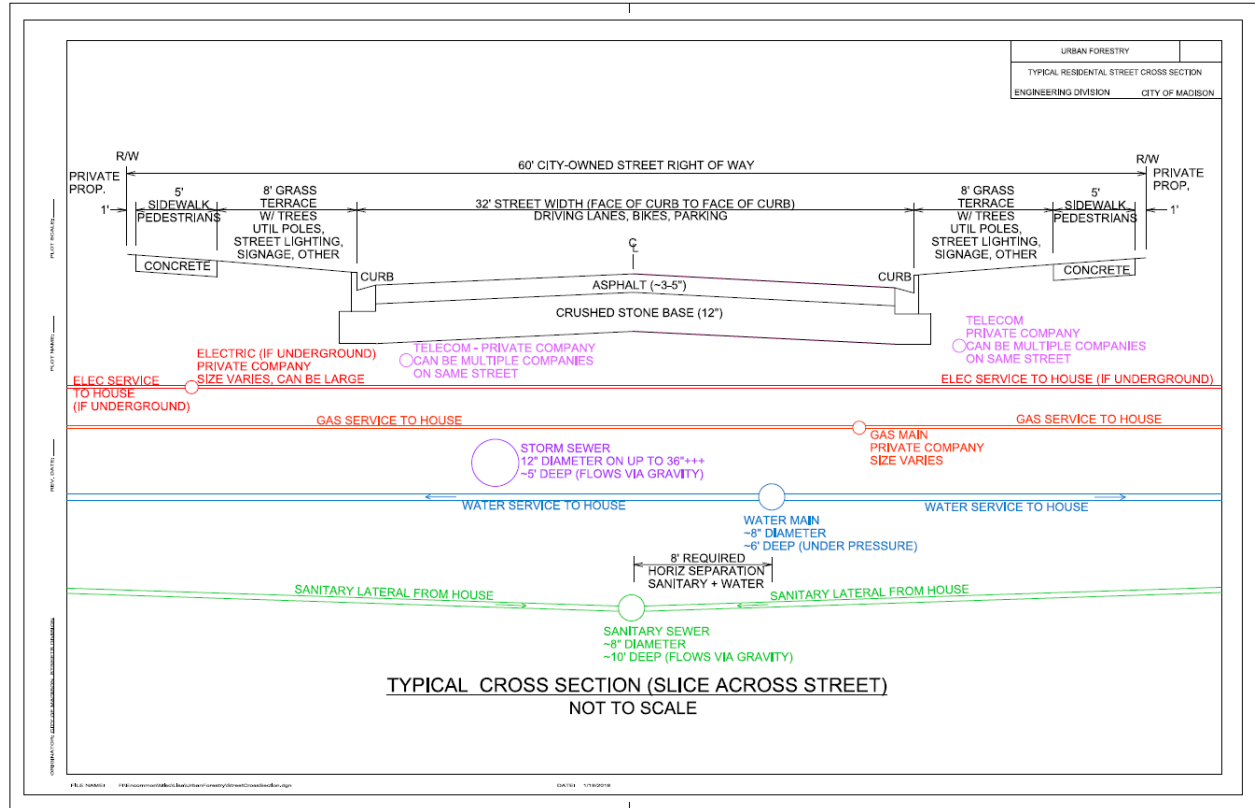
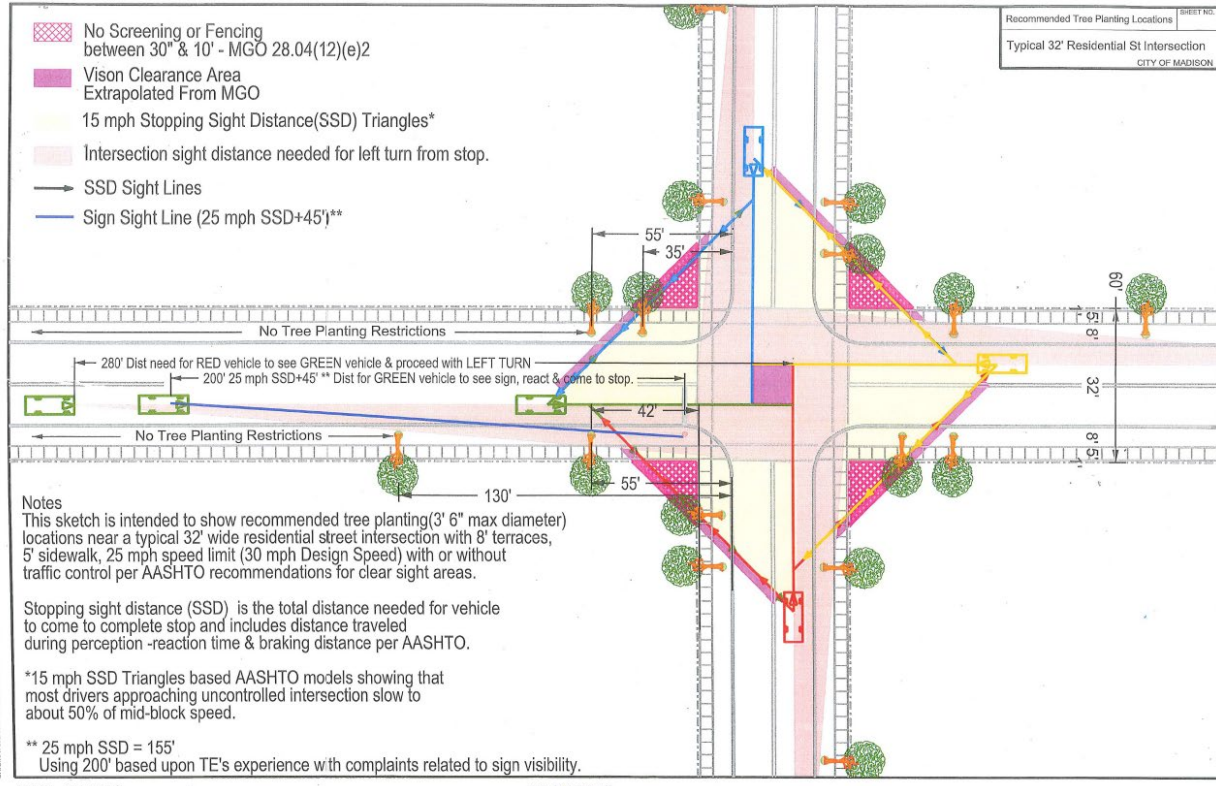
WINNEBAGO STREET - OPTION 1
(LOOKING NORTHEAST)



WINNEBAGO STREET - OPTION 2
(LOOKING NORTHEAST)

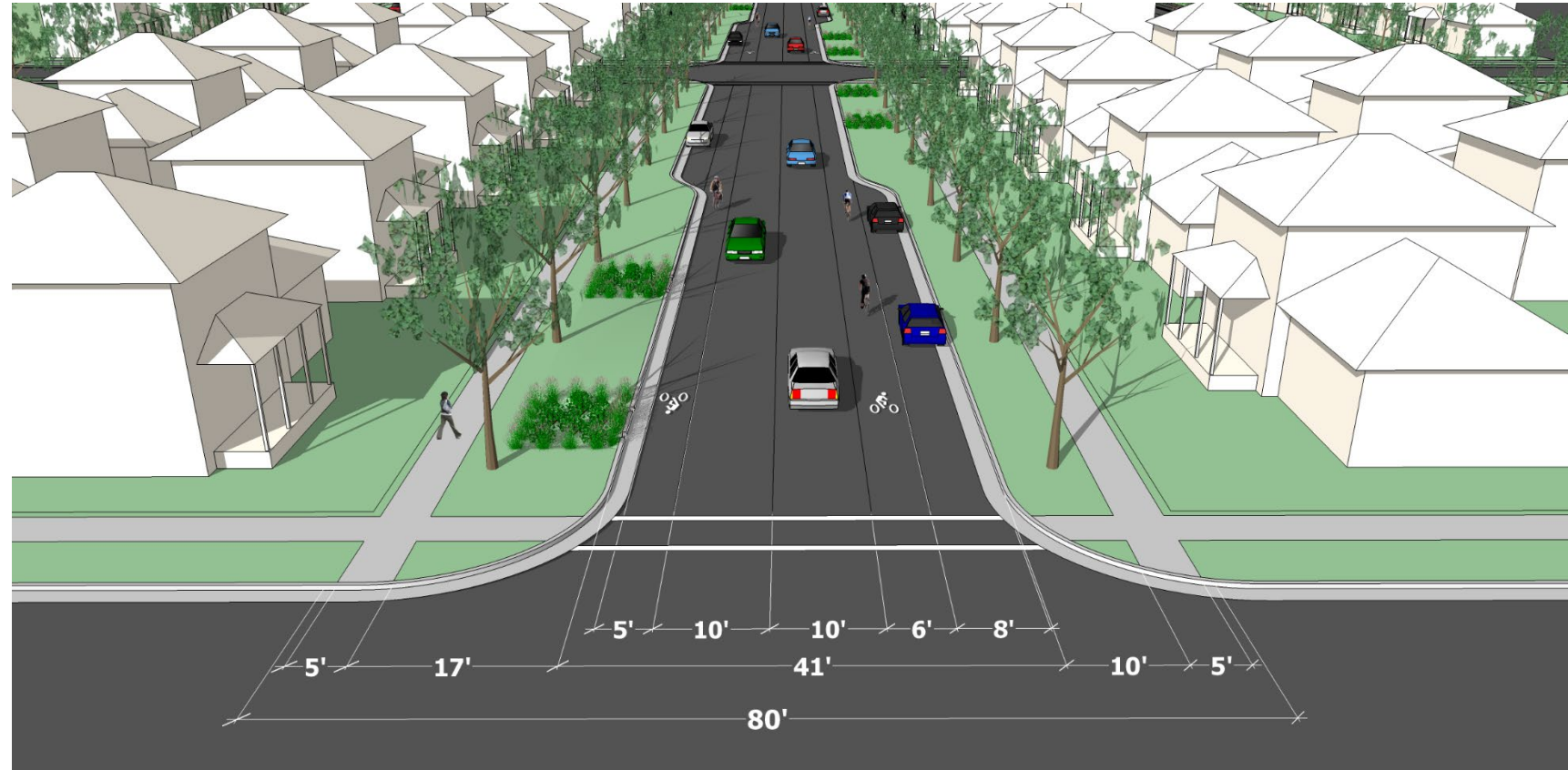


Street Trees – a contest for space



Street Trees – new streets

- *Recommendation:*
Expanded minimum terrace widths for new streets
 - *Local streets: 10 ft*
 - *Collector streets: 10 ft*
 - *Arterial streets: 12 ft*



Street Trees – existing street reconstructions

- *Recommendation: explore alternative designs with engineered soil volume construction methods and terrace support systems*

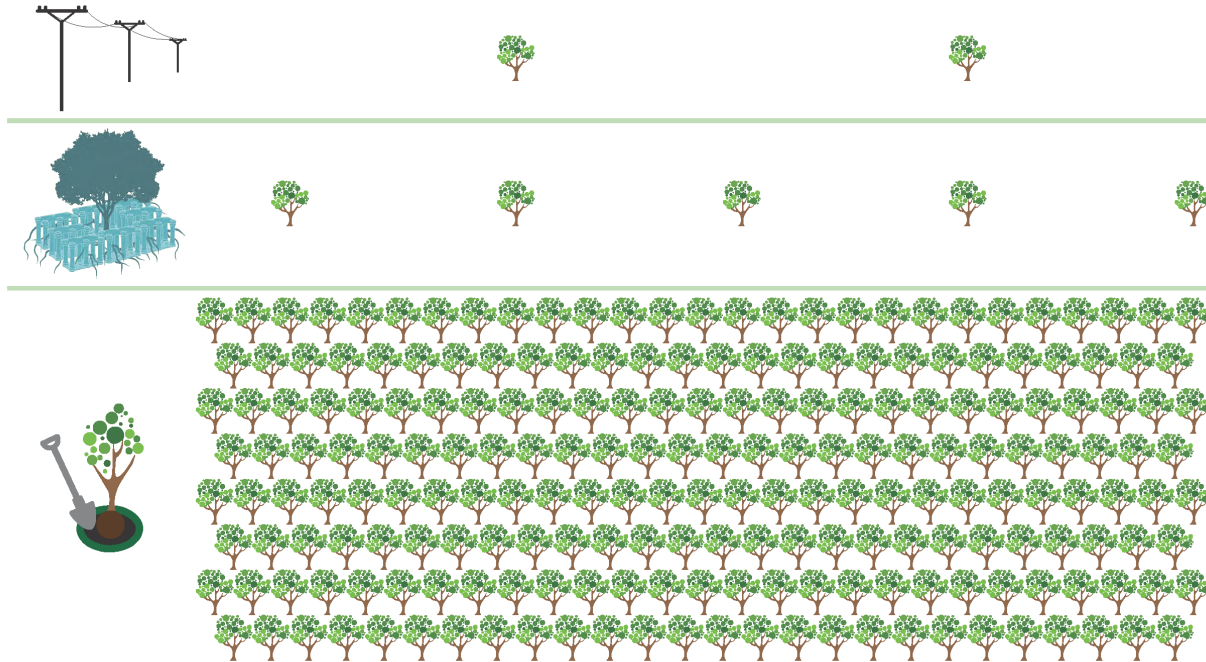


Street Trees – undergrounding utilities

- Recommendation: undergrounding policy criteria should be amended to account for the impact of overhead utility lines on city terrace trees*

STRATEGIES FOR EXPANDING THE URBAN CANOPY
COMPARING THE IMPACTS OF UNDERGROUNDING UTILITIES, SILVA CELLS AND SPONSORED TREE PLANTING ON PRIVATE PROPERTY BASED ON EQUAL EXPENDITURES.

ASSUMES \$500/FT FOR UNDERGROUNDING, \$10,000 PER SILVA CELL, \$250 PER TREE



Street Trees – redevelopment and staging

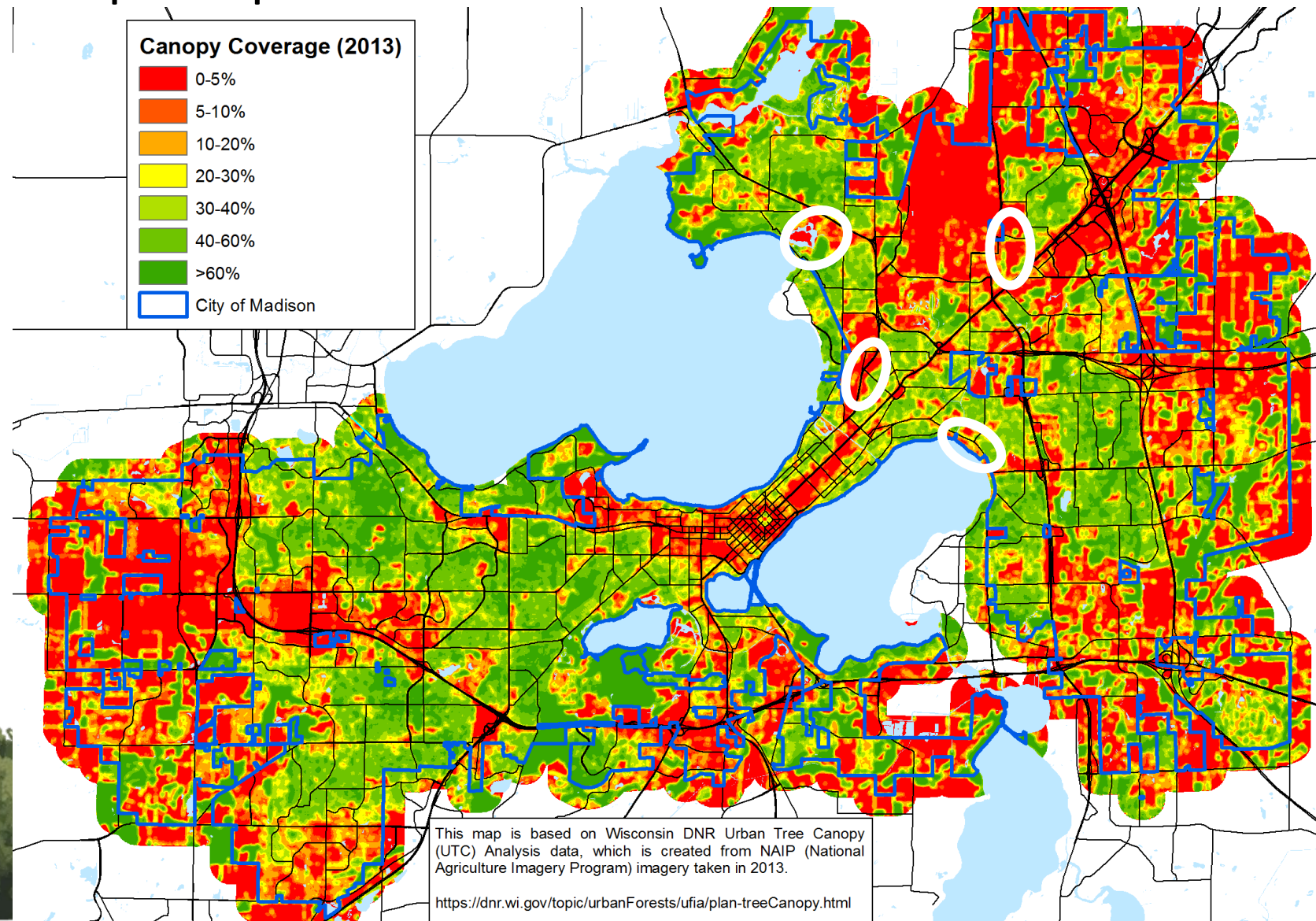
- *Recommendation: increase costs associated with street tree removal*
- *Recommendation: trees removed should be replaced in enhanced conditions, at the cost of the developer*



Public Trees/Forestry Operations - Parks

- Many competing interests for park space
 - Athletic fields
 - Garden plots
 - Sledding hills

• *Recommendation:*
Work with Parks to identify potential tree planting locations



Public Trees/Forestry Operations - Greenways (stormwater)

- Typically planted with prairie grasses
- Trees in past have been problematic
 - Tree shade inhibits grass growth, leading to bare soil
 - Erosion occurs without ground cover
- *Recommendation: Forestry and Engineering work collaboratively to identify appropriate tree planting strategies in greenways*



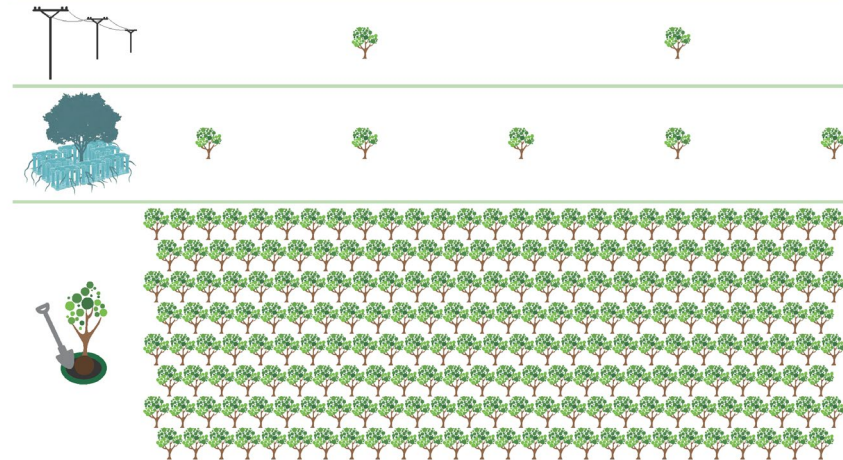
Outreach & Education

- *Recommendation: develop an Urban Forest Outreach Initiative - public education and coordination of events and volunteers*
- *Recommendations: create a grant program that provides trees to be planted on private property*



STRATEGIES FOR EXPANDING THE URBAN CANOPY

COMPARING THE IMPACTS OF UNDERGROUNDING UTILITIES, SILVA CELLS AND SPONSORED TREE PLANTING ON PRIVATE PROPERTY BASED ON EQUAL EXPENDITURES.
ASSUMES \$900/FT FOR UNDERGROUNDING, \$10,000 PER SILVA CELL, \$250 PER TREE



Equity

- Low-income communities often lack canopy
- *Recommendation: consider subsidies for street or private trees in lower-income areas and neighborhoods that have not historically had street trees*



Next Steps

- City review and approval process

Introduction: July 2

Board of Public Works: July 17

Sustainable Madison Commission: July 22

Urban Design Commission: July 31

Transportation Policy and Planning Board: Aug. 5

Finance Committee: Aug. 12

Plan Commission: Aug. 12

Committee on the Environment: Aug. 19

Board of Park Commissioners: Sept. 4

Common Council: Sept 17



Questions – Comments - Discussion

