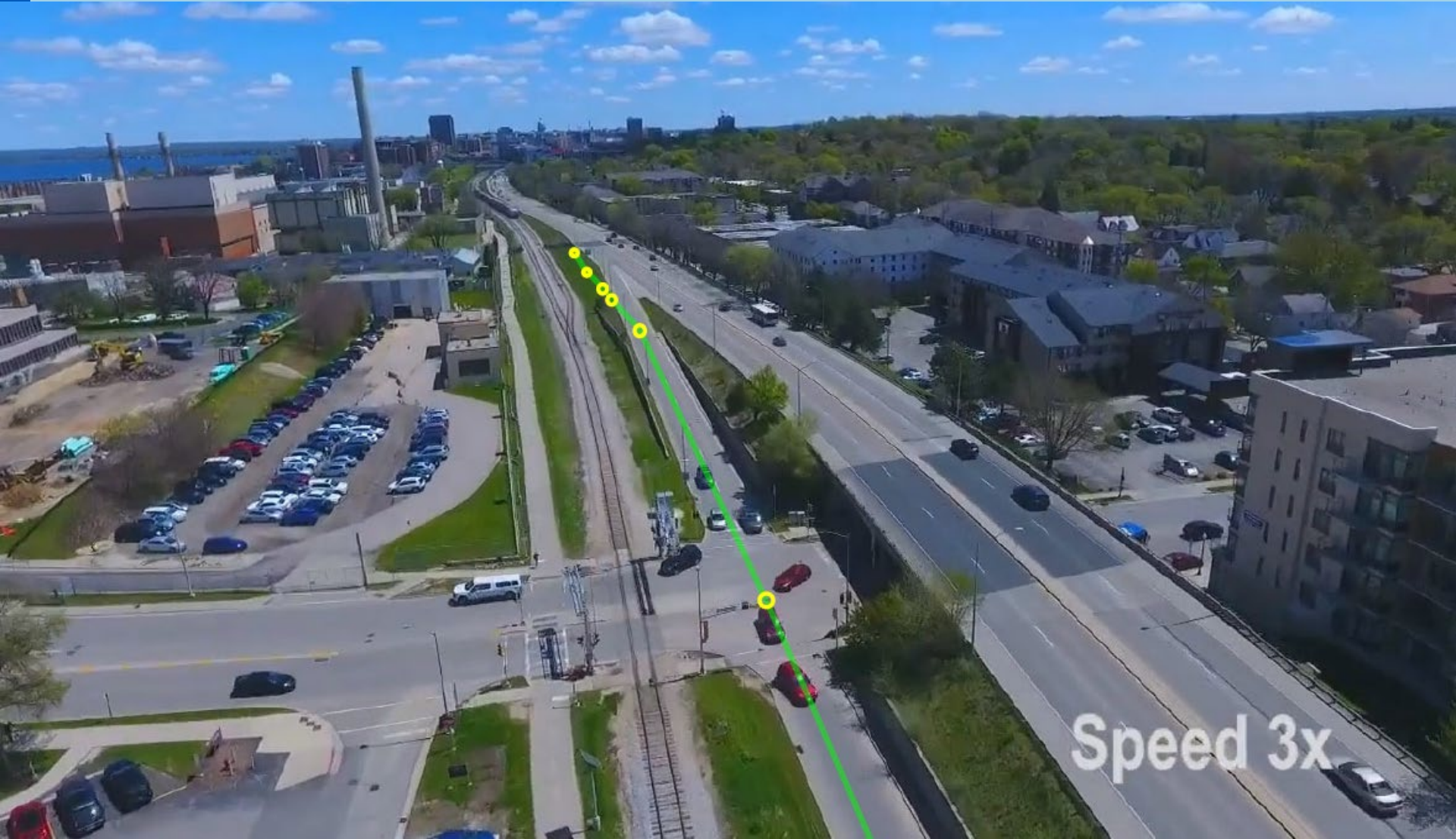
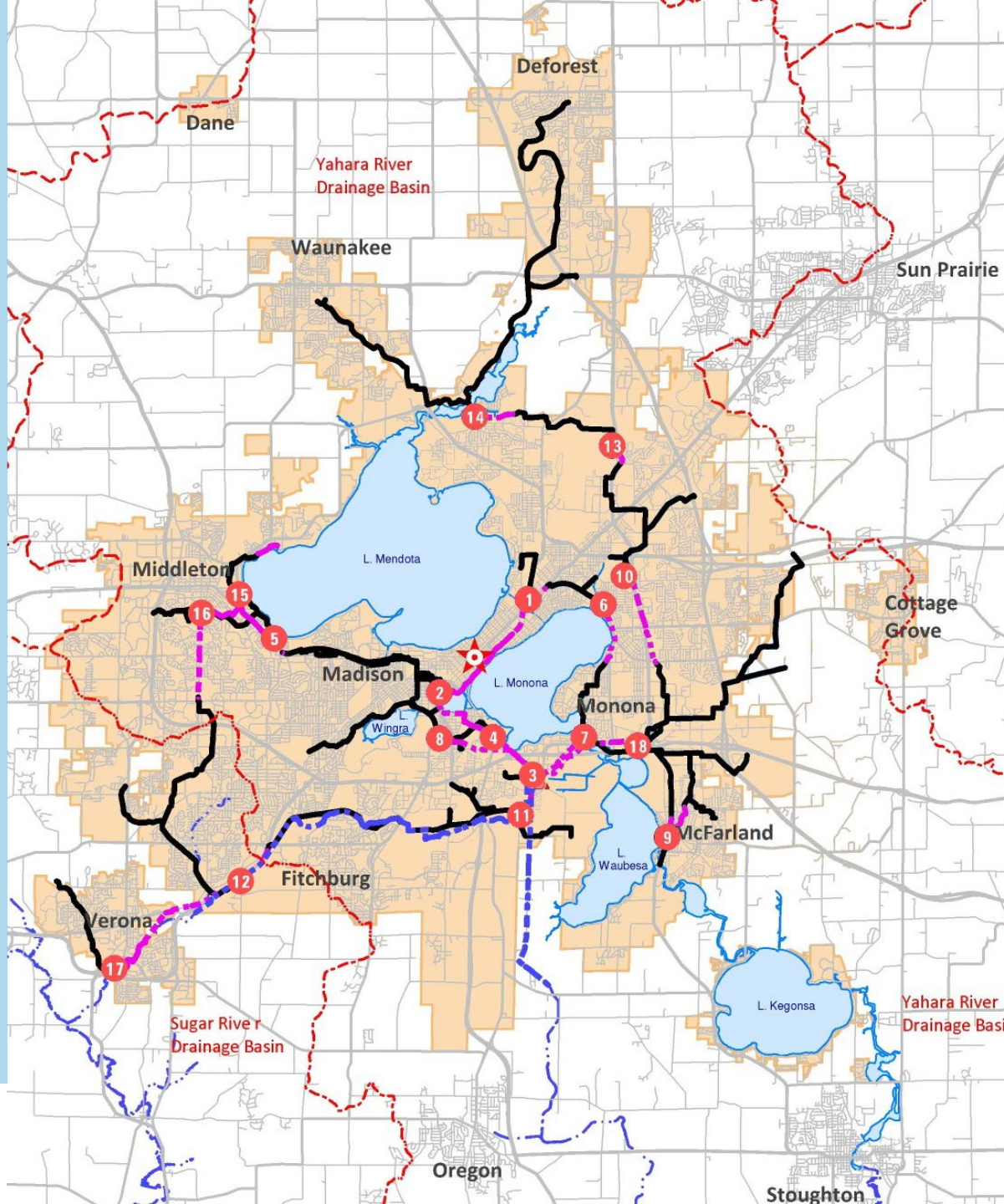


West Interceptor – Shorewood Relief Sewer Project



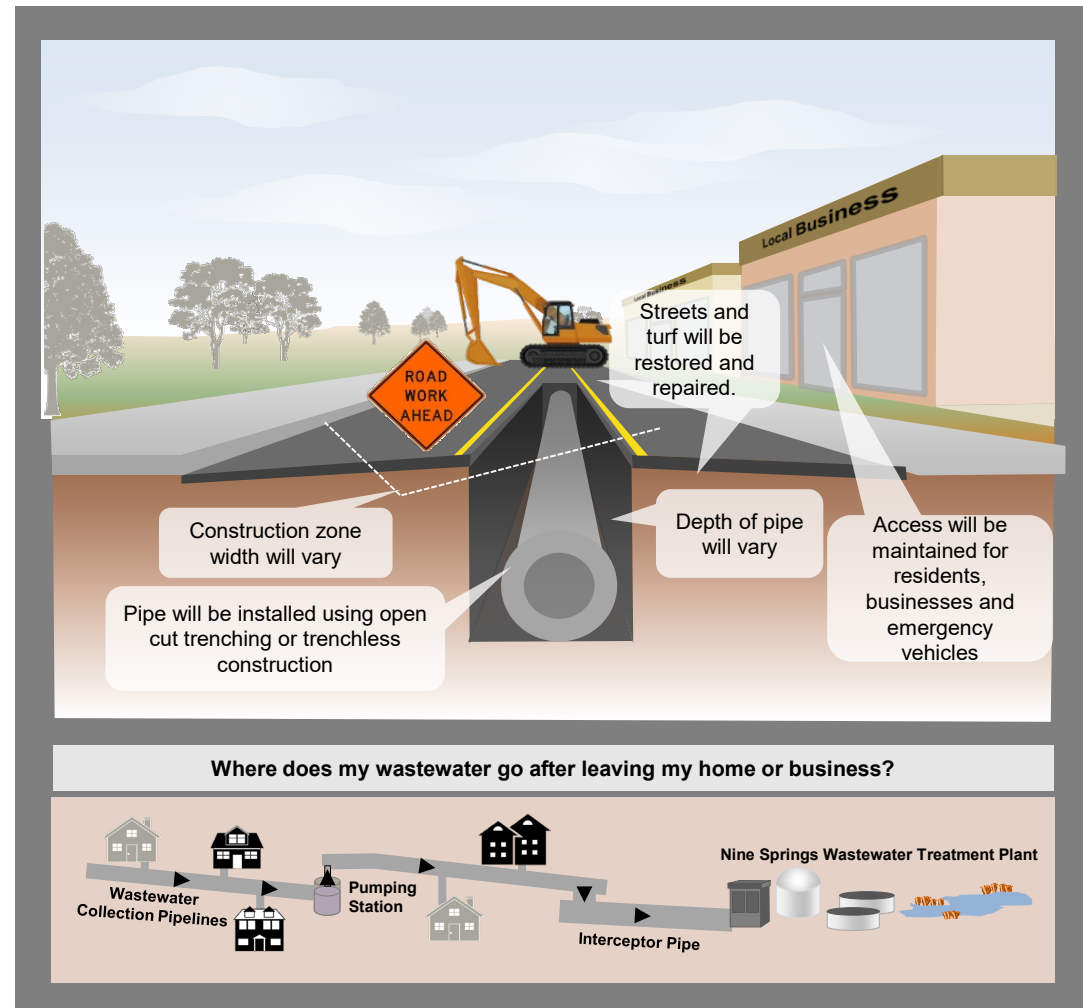
About MMSD

- Established in 1930
- Regional provider for 26 communities
- 360,000 people
- 184 square miles
- 141 miles of pipe
- 41 million gallons per day on average

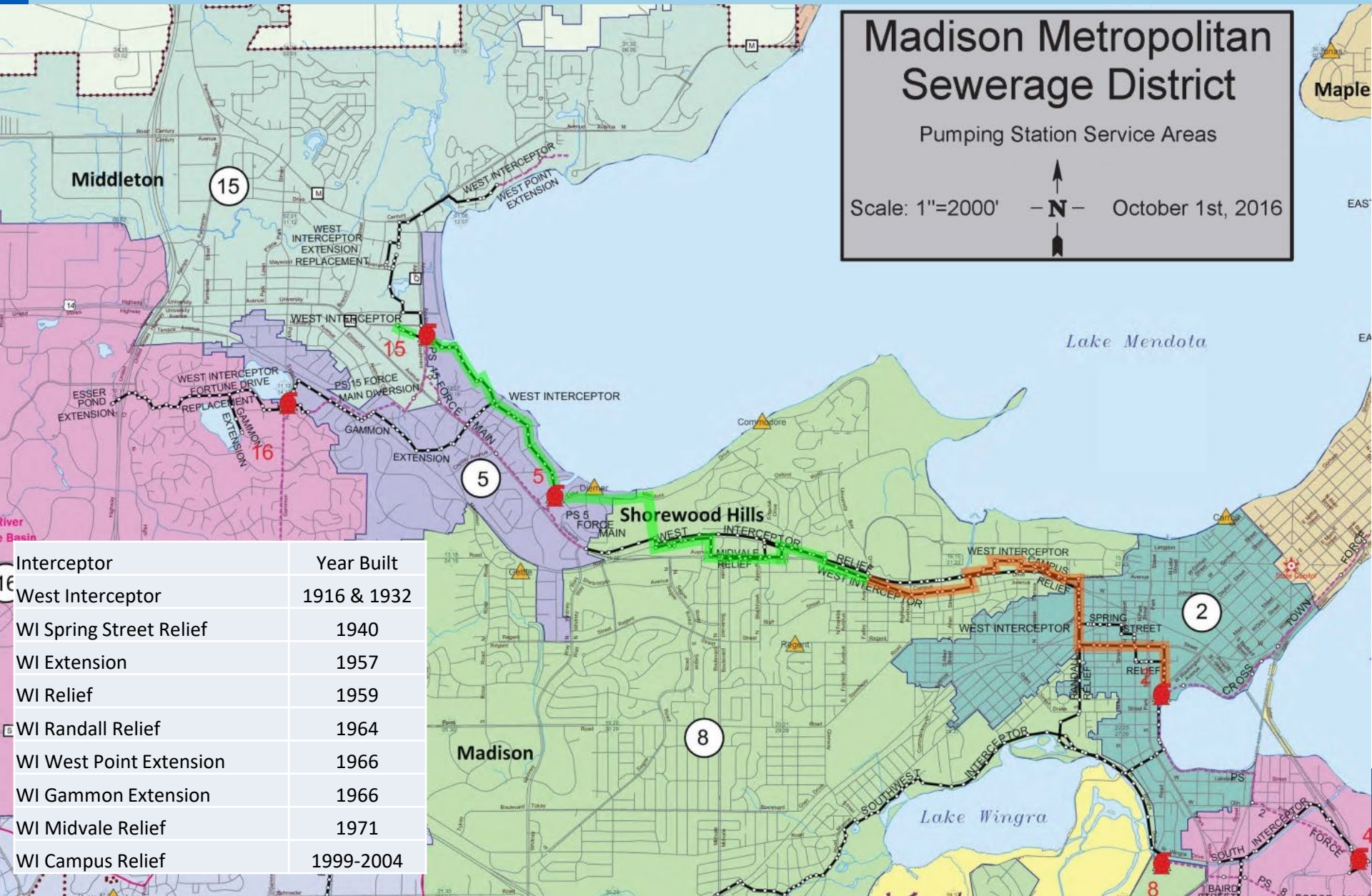


What is an Interceptor Sewer?

- An interceptor sewer is a large pipe that receives flow from smaller local sewers and directs it to the wastewater treatment plant



West Interceptor System



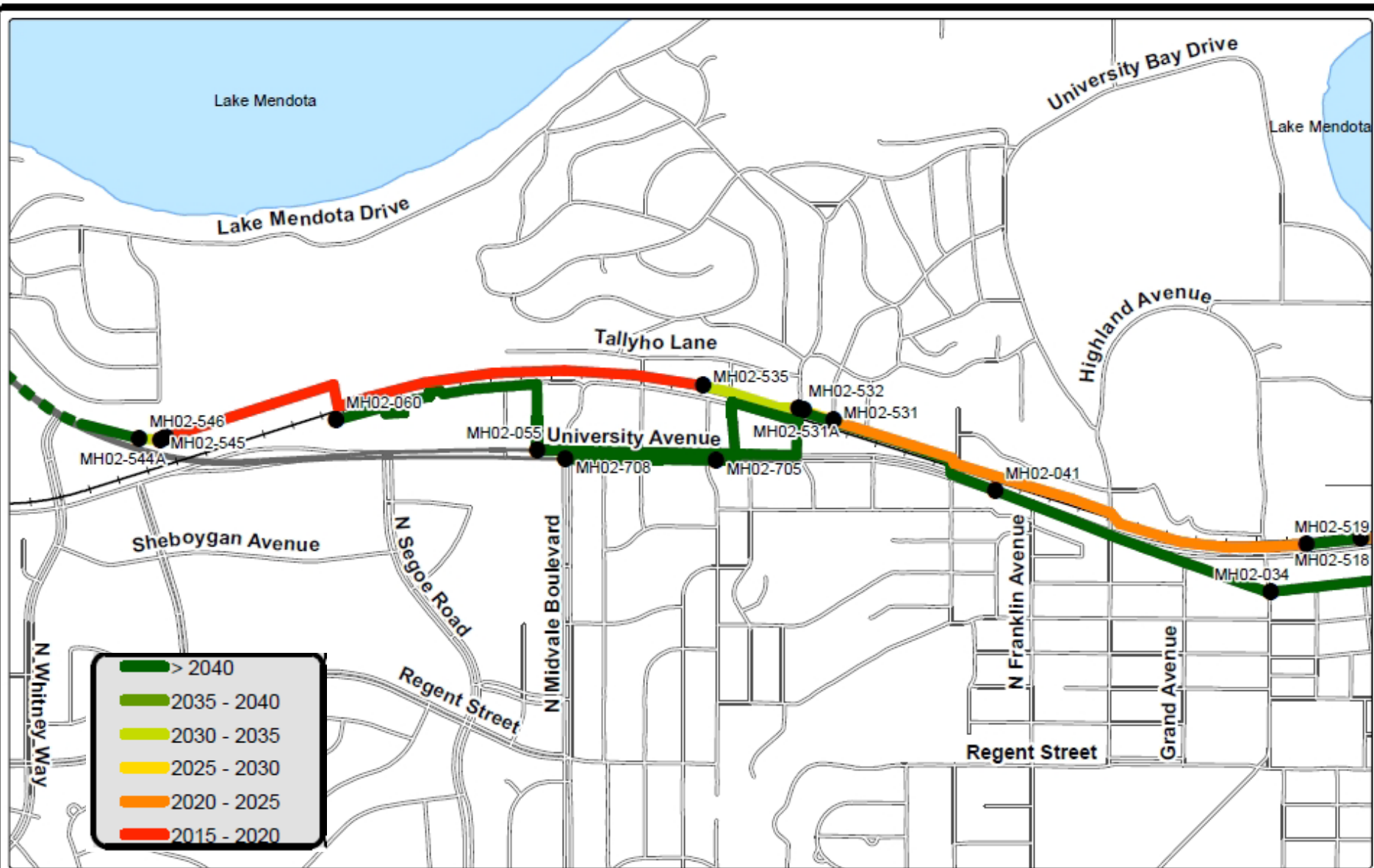
Madison Metropolitan Sewerage District

Pumping Station Service Areas

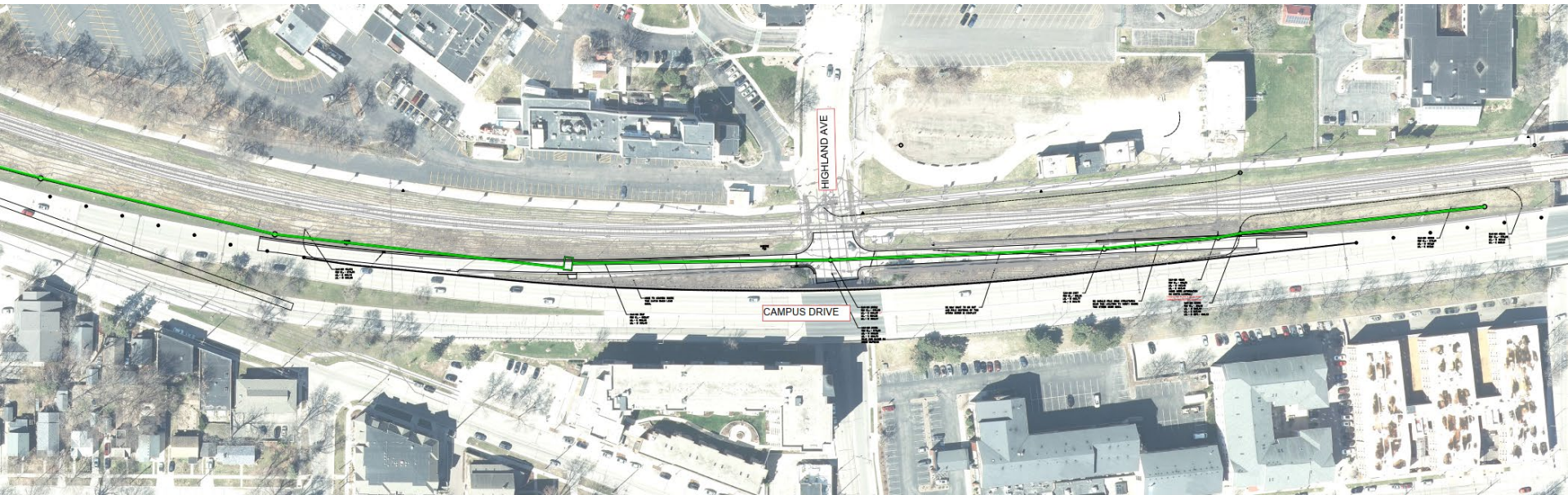
Scale: 1"=2000' **N** October 1st, 2016

Interceptor	Year Built
West Interceptor	1916 & 1932
WI Spring Street Relief	1940
WI Extension	1957
WI Relief	1959
WI Randall Relief	1964
WI West Point Extension	1966
WI Gammon Extension	1966
WI Midvale Relief	1971
WI Campus Relief	1999-2004

Capacity Needs Drive the Project



Highland Avenue Area



Metro Transit Routes

