

CERTIFIED SURVEY MAP NO.

PART OF LOTS 100 AND 101, FARWELL'S ADDITION TO THE VILLAGE (NOW CITY) OF MADISON; ALL OF THE "REPLAT OF BLOCK 1, FAIR OAKS"; AN UNNAMED CUL-DE-SAC VACATED IN VOL 57 MISC, PAGE 516; ALL OF "SULLIVAN'S REPLAT"; THE WEST 25 FEET OF LOT 1, BLOCK 1, ANZINGER'S REPLAT; PART OF JACKSON STREET, NOW VACATED; PART OF FLORENCE STREET, NOW VACATED; PART OF SULLIVAN STREET, NOW VACATED; AND PART OF THE NORTHEAST QUARTER (NE 1/4) OF THE SOUTHEAST QUARTER (SE 1/4) OF SECTION SIX (6), TOWN SEVEN NORTH (7N), RANGE TEN EAST (R10E), IN THE CITY OF MADISON, DANE COUNTY, WISCONSIN

NOTES (CONTINUED)

6. PER THE CITY OF MADISON:
"IN THE EVENT OF A CITY OF MADISON PLAN COMMISSION AND/OR COMMON COUNCIL APPROVED REDIVISION OF A PREVIOUSLY SUBDIVIDED PROPERTY, THE UNDERLYING PUBLIC EASEMENTS FOR DRAINAGE PURPOSES ARE RELEASED AND REPLACED BY THOSE REQUIRED AND CREATED BY THE CURRENT APPROVED SUBDIVISION."
7. PER THE CITY OF MADISON:
"ALL LOTS WITHIN THIS CERTIFIED SURVEY SHALL HAVE DRAINAGE PLANS REVIEWED ON AN INDIVIDUAL BASIS AS PART OF THE BUILDING PERMIT PROCESS. NO BUILDING PERMITS SHALL BE ISSUED PRIOR TO THIS APPROVAL."

SOUTH 1/4 CORNER, SECTION 31, T8N, R10E, BRASS CAP IN CONCRETE MONUMENT FOUND N 494,549.42 E 828,891.17	NORTH 1/4 CORNER, SECTION 6, T7N, R10E, BRASS CAP IN CONCRETE MONUMENT FOUND N 494,549.24 E 828,903.26	SOUTHEAST CORNER, SECTION 31, T8N, R10E, BRASS CAP IN CONCRETE MONUMENT FOUND N 494,537.89 E 831,529.32	NORTHEAST CORNER, SECTION 6, T7N, R10E, BRASS CAP IN CONCRETE MONUMENT FOUND N 494,537.66 E 831,541.40
---	--	---	--

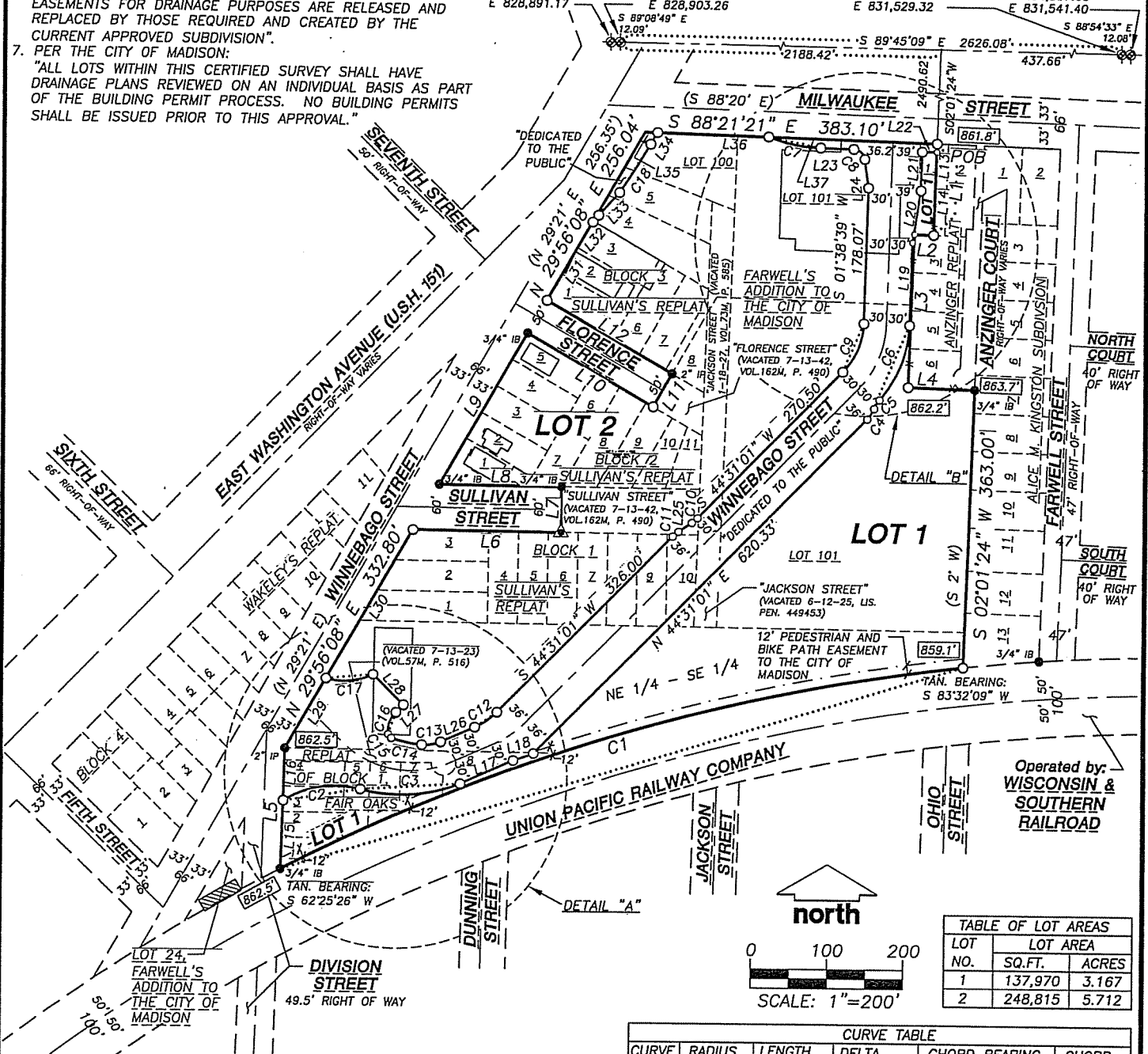


TABLE OF LOT AREAS		
LOT NO.	LOT AREA SQ.FT.	ACRES
1	137,970	3.167
2	248,815	5.712

CURVE TABLE					
CURVE	RADIUS	LENGTH	DELTA	CHORD BEARING	CHORD
C1	2551.78'	940.26'	21°06'43"	S 72°58'48" W	934.95'

LEGEND

- SECTION CORNER
- IRON STAKE FOUND, AS NOTED
- PK NAIL FOUND
- 3/4" X 24" REBAR SET
- MAG NAIL SET IN CONCRETE
- BUILDINGS
- PROPERTY LINE
- PLATTED LINE
- SECTION LINE
- EASEMENT LINE
- FENCE
- ELEVATION AT LOT CORNER PREVIOUSLY RECORDED INFORMATION

NOTES

1. BEARINGS ARE BASED ON THE WISCONSIN COUNTY COORDINATE SYSTEM, DANE COUNTY ZONE, 1991.
2. BOUNDARY SURVEY PERFORMED BY JENKINS SURVEY & DESIGN, INC. OCTOBER 9, 2006.
3. ELEVATIONS ARE BASED ON NORTH AMERICAN VERTICAL DATUM OF 1988 (NAVD 88). BENCHMARK IS 3/4" REBAR MARKING THE MEANDER CORNER FOR THE WEST 1/4 OF SECTION 5, T7N, R10E, PUBLISHED ELEVATION = 862.467'.
4. SEE SHEETS 2 AND 3 FOR INTERIOR LOT CURVE AND LINE TABLES AND LOT DETAILS.
5. EXCEPT FOR SOME UTILITY FACILITIES TO BE DETERMINED, ALL EXISTING IMPROVEMENTS CONTAINED WITHIN THE BOUNDARY OF THIS CERTIFIED SURVEY MAP ARE TO BE REMOVED OR RELOCATED.

CSM EXTERIOR LINE TABLE		
LINE	BEARING	LENGTH
L1	S 02°01'24" W	120.00'
L2	N 88°10'36" W	25.00'
L3	S 02°01'24" W (S 2' W)	200.82' (200')
L4	S 88°21'20" E (S 88°20' E)	87.50'
L5	N 01°49'37" E (N 0°19' W)	157.67'
L6	S 89°32'32" E	193.98'
L7	N 00°17'34" E	60.00'
L8	N 89°32'32" W	159.90'
L9	N 29°56'08" E (N 29°21' E)	229.59' (230')
L10	S 60°08'21" E	189.79'
L11	N 29°56'08" E	49.87'

ISSUE DATE: MAY 24, 2006