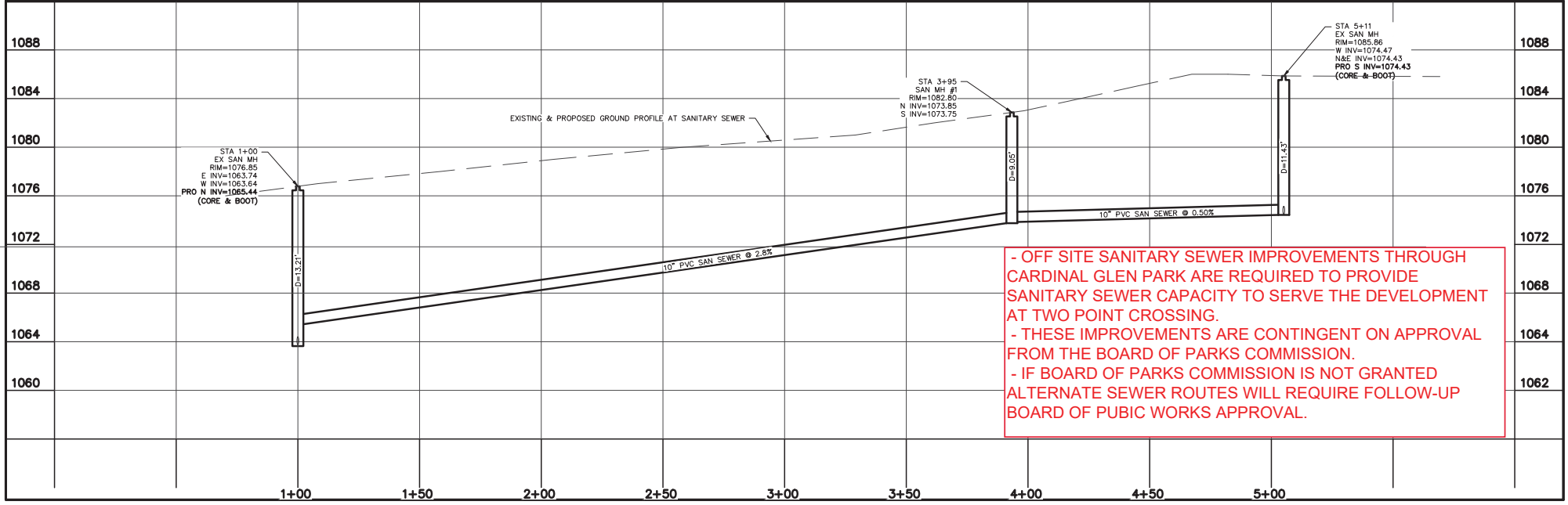


TWO POINT CROSSING CSM
(9301-9317 Mineral Point Road and 9450 Silicon Prairie Parkway)

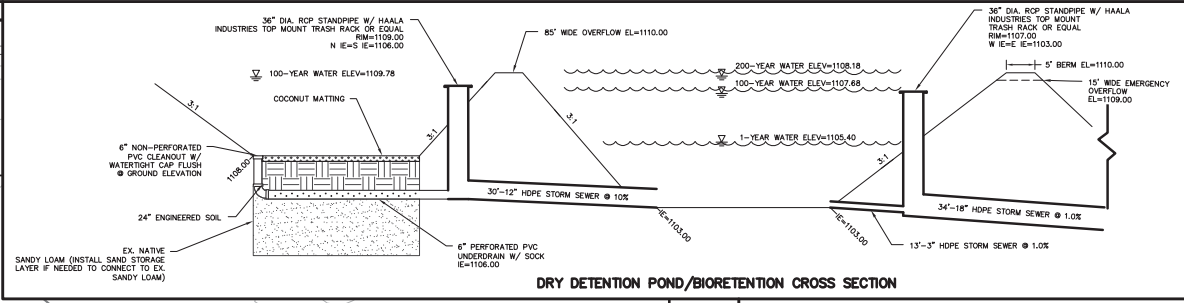
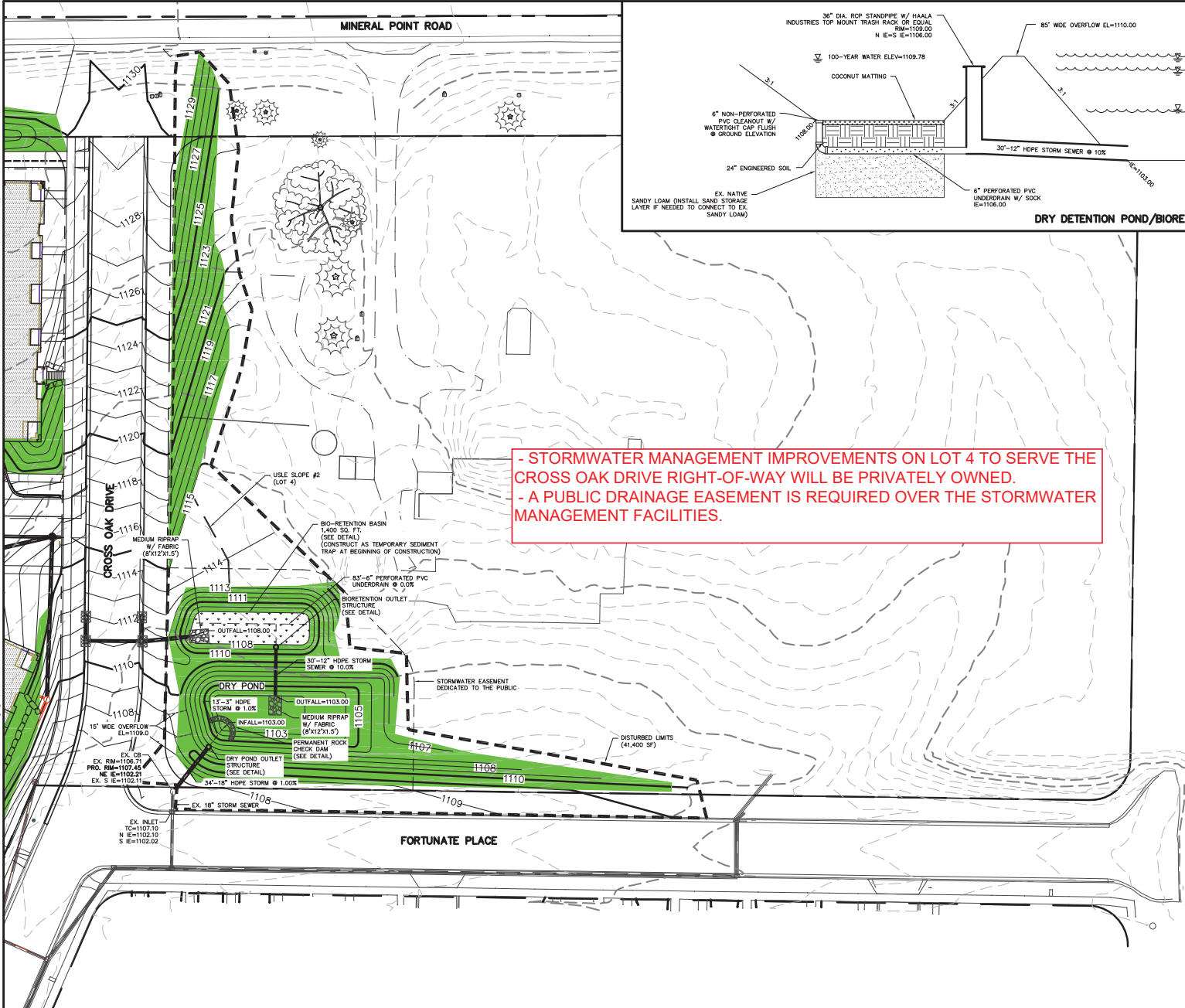
Contract 8517
Improvements to serve Lots 1-3
Lot 4 Improvements with Future Phase

Project Location Map





- OFF SITE SANITARY SEWER IMPROVEMENTS THROUGH CARDINAL GLEN PARK ARE REQUIRED TO PROVIDE SANITARY SEWER CAPACITY TO SERVE THE DEVELOPMENT AT TWO POINT CROSSING.
 - THESE IMPROVEMENTS ARE CONTINGENT ON APPROVAL FROM THE BOARD OF PARKS COMMISSION.
 - IF BOARD OF PARKS COMMISSION IS NOT GRANTED ALTERNATE SEWER ROUTES WILL REQUIRE FOLLOW-UP BOARD OF PUBIC WORKS APPROVAL.



- STORMWATER MANAGEMENT IMPROVEMENTS ON LOT 4 TO SERVE THE CROSS OAK DRIVE RIGHT-OF-WAY WILL BE PRIVATELY OWNED.
 - A PUBLIC DRAINAGE EASEMENT IS REQUIRED OVER THE STORMWATER MANAGEMENT FACILITIES.

EROSION NOTES:
 THE STONE CONSTRUCTION ENTRANCE SHALL BE INSTALLED PRIOR TO ANY CONSTRUCTION, THE TRACKING PAIL IS TO BE MAINTAINED BY THE CONTRACTOR IN A CONDITION WHICH WOULD PREVENT THE TRACK OF MUD OR DRY SEDIMENT ONTO THE ADJACENT PUBLIC STREET'S. SEDIMENT REACHING THE PUBLIC ROAD SHALL BE REMOVED BY STREET CLEANING (NOT HYDRAULIC FLUSHING) BEFORE THE END OF EACH WORKDAY.
 EROSION CONTROL DEVICES SHALL BE INSTALLED PRIOR TO GRADING OPERATIONS AND SHALL BE PROPERLY MAINTAINED FOR MAXIMUM EFFECTIVENESS UNTIL VEGETATION IS ESTABLISHED. ALL EROSION CONTROL MEASURES AND STRUCTURES SERVING THE SITE MUST BE INSPECTED AT LEAST WEEKLY OR WITHIN 24 HOURS OF A 0.5 INCH RAIN EVENT. ALL MAINTENANCE WILL FOLLOW AN INSPECTION WITHIN 24 HOURS.
 CUT AND FILL SLOPES SHALL BE NO GREATER THAN 3:1.
 EROSION CONTROL IS THE RESPONSIBILITY OF THE CONTRACTOR UNTIL ACCEPTANCE OF THIS PROJECT. EROSION CONTROL MEASURES AS SHOWN SHALL BE THE MINIMUM PRECAUTIONS THAT WILL BE ALLOWED. THE CONTRACTOR SHALL BE RESPONSIBLE FOR RECOGNIZING AND CORRECTING ALL EROSION CONTROL PROBLEMS THAT ARE A RESULT OF CONSTRUCTION ACTIVITIES. ADDITIONAL EROSION CONTROL MEASURES, AS REQUESTED IN WRITING BY THE STATE OR LOCAL INSPECTORS, OR THE DEVELOPER'S ENGINEER, SHALL BE INSTALLED WITHIN 24 HOURS.
TIME SCHEDULE:
 SEPT 1, 2020 - SEPT 15, 2020 INSTALL INITIAL EROSION CONTROL DEVICES AND EXCAVATE BIO-RETENTION BASIN TO SURFACE GRADE
 SEPT 15, 2020 - JULY 31, 2020 CONSTRUCT CROSS OAK DRIVE STREET EXTENSION
 MAY 31, 2021 - JULY 31, 2020 CONSTRUCT BIORETENTION BASIN AND DRY POND PER DETAIL AND RESTORE PERVIOUS DISTURBED AREAS

RESTORATION NOTES:
 ALL PERVIOUS DISTURBED AREAS SHALL RECEIVE A MINIMUM OF FOUR (4) INCHES OF TOPSOIL, SEED AND MULCH. ALL PERVIOUS DISTURBED AREAS SHALL RECEIVE FERTILIZER EXCEPT NATIVE PLANTING AREAS. RESTORATION WILL OCCUR AS SOON AFTER THE DISTURBANCE AS PRACTICAL. TALL GRASS PRAIRIE SEED MIX SHALL BE USED FOR THE SLOPES OF THE DETENTION POND AND INFILTRATION BASIN. SEED MIXTURE 40 SHALL BE USED ON ALL OTHER DISTURBED AREAS. MIXTURES SHALL BE IN ACCORDANCE WITH SECTION 630.0 IN EQM'S SPECIFICATIONS. AN EQUAL AMOUNTS OF ANNUAL SPECIFICATIONS SHALL BE ADDED TO THE MIX.
 SEED MIXTURES SHALL BE APPLIED AT THE RATE OF FOUR (4) POUNDS PER 1,000 SQUARE FEET. FERTILIZER SHALL BE APPLIED AT THE RATE OF FOUR (4) POUNDS PER 1,000 SQUARE FEET. MULCH SHALL CONSIST OF HAY OR STRAW APPLIED AT THE RATE OF 2 TONS PER ACRE.
 FERTILIZER SHALL MEET THE MINIMUM REQUIREMENTS THAT FOLLOW: NITROGEN, NOT LESS THAN 16%; PHOSPHORIC ACID, NOT LESS THAN 8%; POTASH, NOT LESS THAN 8%.

DNR PRESCRIPTIVE COMPLIANCE:
 RESTORATION SHALL OCCUR WITHIN 30 DAYS OF INITIAL DISTURBANCE FOR SLOPES 20% OR GREATER. SLOPES GREATER THAN 20% SHALL BE RESTORED WITH EROSION MAT.
OWNER:
 TWO POINTS CROSSING, LLC
 ATTN: PAUL MOLINARD
 702 N BLACKHAWK AVE #109
 MADISON, WI 53705
ENGINEER:
 QUAM ENGINEERING, LLC
 ATTN: RYAN QUAM
 4604 SIGELOW ROAD, SUITE A
 MCFARLAND, WI 53558

TO OBTAIN LOCATION OF PARTICIPANTS' UNDERGROUND FACILITIES BEFORE YOU DIG IN WISCONSIN
CALL DIGGERS HOTLINE 1-800-242-8511
TOLL FREE
 TDD(FOR THE HEARING IMPAIRED)(800)542-2289
 WIS. STATUTE 182.0175 (1974) REQUIRES MIN. OF 3 WORK DAYS NOTICE BEFORE YOU EXCAVATE

TWO POINTS CROSSING - LOT 4
 GRADING AND EROSION CONTROL PLAN - LOT 4
 PAGE: 1 OF 1
 DATED: APRIL 23, 2020

QUAM ENGINEERING, LLC
 Residential and Commercial Site Design Consultants
 www.quamengineering.com
 4604 Sigelkow Road, Suite A - McFarland, Wisconsin 53558
 Phone (608) 838-7750; Fax (608) 838-7752