

APPLICATION FOR
URBAN DESIGN COMMISSION
REVIEW AND APPROVAL

AGENDA ITEM # _____

Project # _____

09452

DATE SUBMITTED: <u>7.16.08</u>	Action Requested Informational Presentation <input checked="" type="checkbox"/> Initial Approval and/or Recommendation <input type="checkbox"/> Final Approval and/or Recommendation
UDC MEETING DATE: <u>8.06.08</u>	

PROJECT ADDRESS: LOTS 48, 49
SECOND ADDITION TO TRUAX AIR PARK WEST
ALDERMANIC DISTRICT: 15

OWNER/DEVELOPER (Partners and/or Principals) ARCHITECT/DESIGNER/OR AGENT:
THE RIFKEN GROUP POTTER LAWSON, INC.
14. W. WIFFLIN ST., SUITE 300 15 ELLIS POTTER CT.
MADISON WI 53701 MADISON WI 53711

CONTACT PERSON: MICHAEL GORDON
Address: 15 ELLIS POTTER CT.
MADISON WI 53711
Phone: 608/274-2741
Fax: 608/274-3674
E-mail address: mikeg@potterlawson.com

TYPE OF PROJECT:

(See Section A for:)

- Planned Unit Development (PUD)
 - General Development Plan (GDP)
 - Specific Implementation Plan (SIP)
- Planned Community Development (PCD)
 - General Development Plan (GDP)
 - Specific Implementation Plan (SIP)
- Planned Residential Development (PRD)
- New Construction or Exterior Remodeling in an Urban Design District * (A public hearing is required as well as a fee)
 - School, Public Building or Space (Fee may be required)
 - New Construction or Addition to or Remodeling of a Retail, Hotel or Motel Building Exceeding 40,000 Sq. Ft.
 - Planned Commercial Site

(See Section B for:)

- New Construction or Exterior Remodeling in C4 District (Fee required)

(See Section C for:)

- R.P.S.M. Parking Variance (Fee required)

(See Section D for:)

- Comprehensive Design Review* (Fee required)
- Street Graphics Variance* (Fee required)
- Other _____

*Public Hearing Required (Submission Deadline 3 Weeks in Advance of Meeting Date)

Where fees are required (as noted above) they apply with the first submittal for either initial or final approval of a project.

Urban Design Commission Initial Submittal

06, August, 2008



DEVELOPMENT
BROKERAGE
MANAGEMENT

MATC Protective Services Center - Madison, Wisconsin

Potter Lawson Copyright 2008 15 Ellis Potter Court, Madison, Wisconsin 53711
Ken Saiki Design Inc. Copyright 2008 303 S. Paterson Suite 1, Madison, Wisconsin 53703

Narrative Description of Project
Protective Services Center
Madison Area Technical College

Potter Lawson, Inc.
Updated July 16, 2008

MATC's Center for Human and Protective Services Education (CHPSE) is currently located in inadequate facilities. The College is seeking to provide a new facility for part of the program. The Protective Services Center will be home for MATC's programs for Law Enforcement and EMS Services training.

The Rifken Group will construct the building and lease it to MATC. It will be located in the Airport Urban Design District between Packers Avenue and Pankratz Street, south of the International Lane intersection. The project site is approximately 4.5 acres. After the Informational Review in March, the site was reduced from three to two parcels.

The building will be about 41,700 sf, reduced from the March design of 70,500 sf. Spaces within the building will include classrooms, labs, offices, a multi-purpose/training room, and a garage for EMS vehicles. Most spaces will occupy a two-story bar, at the north edge of the site. The administrative function and building entrance will be in a small one-story wing.

Parking will be provided to meet minimum Zoning requirements and user needs. A Transportation Demand Study is being prepared at this time. The general findings will be shared with the Commission at the August review.

Samples of the exterior materials will be brought to the review. Primary materials include brick, metal wall panels and glass in aluminum frames.

The building is being designed to incorporate sustainable design principles, which will be explained at the review as well.



MATC Protective Services Center
Urban Design Commission Initial Review, 06 August 2008
© POTTER LAWSON, INC.



N



Northbound Packers Ave.



Southwest corner of site, [NE]



Northbound Packers Ave., Site to NE



Packers Ave., [W]



Packers Ave., [SW]



Property directly South of site, [SE]



Northeast corner of Site, [SW]



Packers Ave. to West, Site to East [N]



Northbound Packers Ave., Site directly East



Northwest corner of site, [SE]



International/Packers Ave. Intersection, [SW]



Southeast corner of site, [NW]



Packers Ave. Adjacent to site, [W]



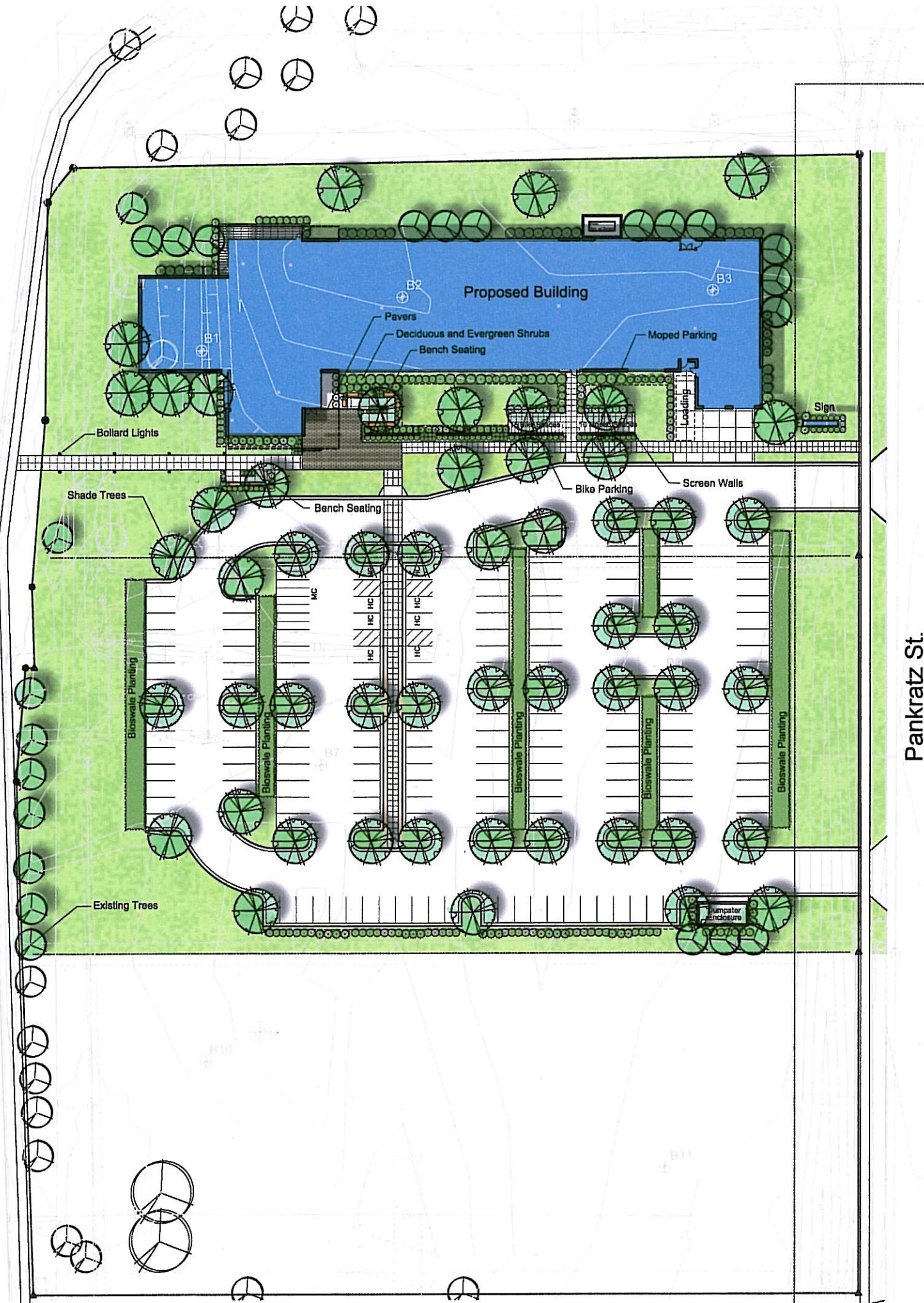
Southbound Packers, [NW]

MATC Protective Services Center - Context Photos

© POTTER LAWSON, INC.
Urban Design Commission Initial Review, 06 August 2008

Packers Ave.

Pankratz St.

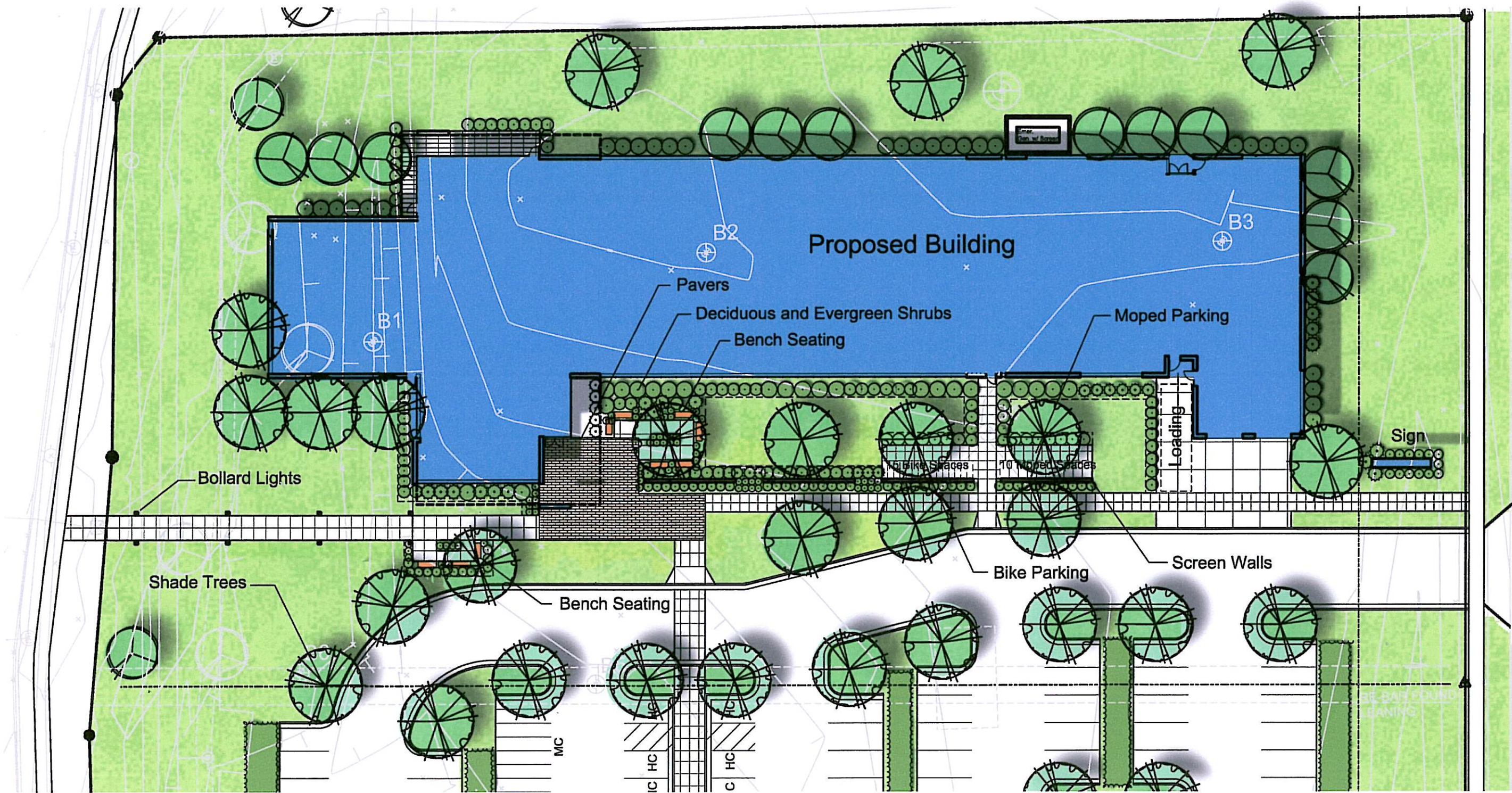


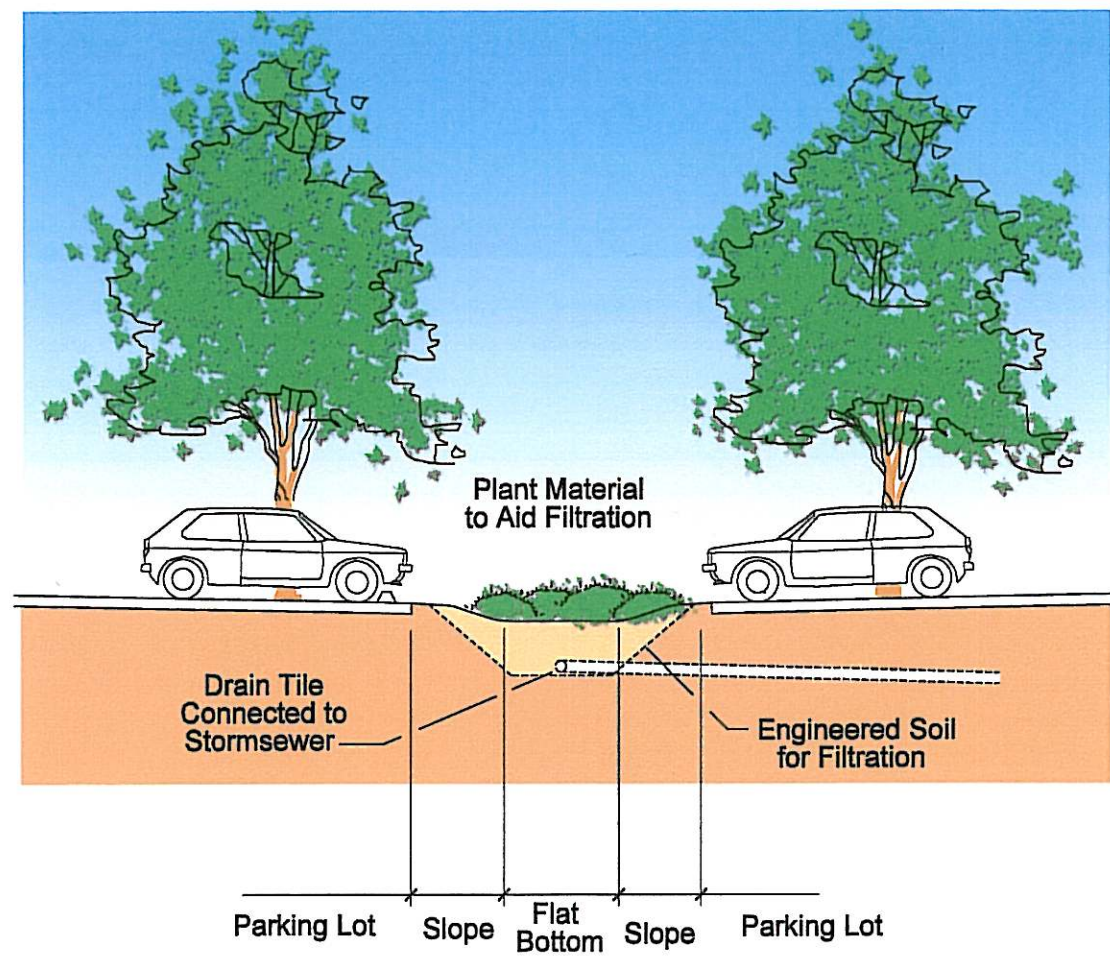
KEN SAIKI
 DESIGN INC
 LANDSCAPE
 ARCHITECTS
 303 S. PATTERSON
 SUITE 104
 MADISON, WI 53703
 Phone: 608.251.3500
 Fax: 608.251.5330
 www.ktd-ia.com

MATC Protective Services Center - Site Design

06 August 2008



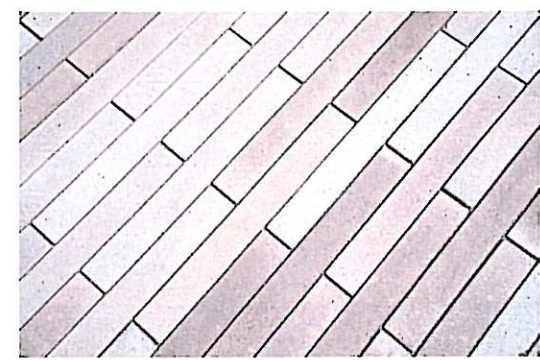




Bioswale Section



Installed Bioswale Planting



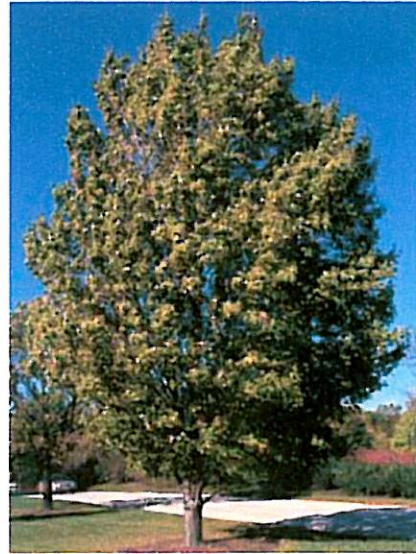
Proposed Paving at Building Entrance



Proposed Bicycle Rack



Proposed Bollard Light



Acer miyabei 'Morton'



Ginkgo biloba 'Fastigiata'



Hydrangea arborescens 'Annabelle'



Rhus aromatic 'Grow Low'



Carex vulpinoidea



Panicum virgatum



Elymus canadensis

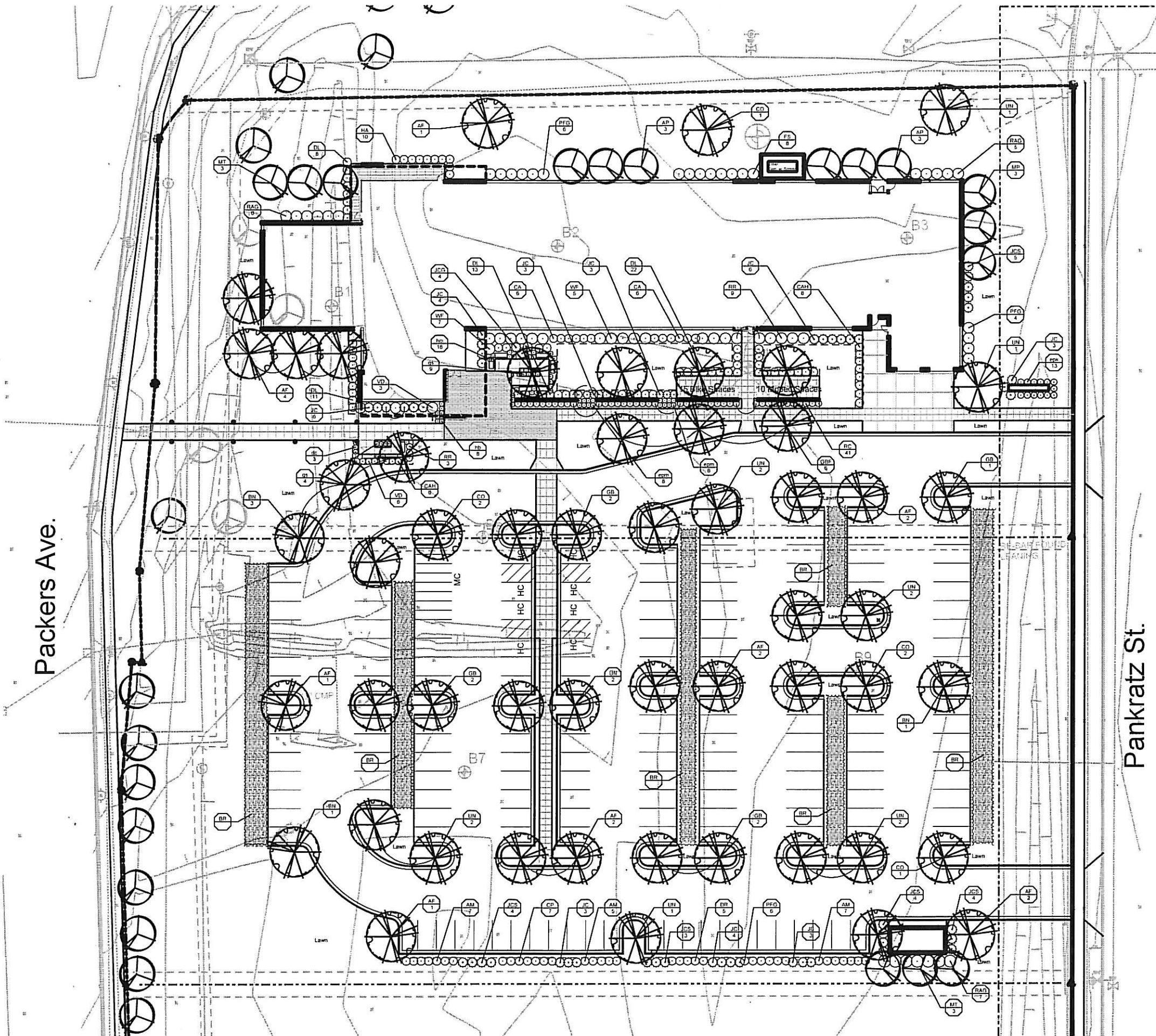
key	scientific name	common name	quantity	size/root	comments/maintenance notes
Canopy Trees					
AF	<i>Acer x Freemanii</i> 'Marmo'	Autumn Blaze maple		2" Cal/B&B	columnar form
BN	<i>Betula nigra</i>	River Birch		2" Cal/B&B	3-stem multi-trunk form
CO	<i>Celtis occidentalis</i> 'Prairie Pride'	Prairie Pride Hackberry		2" Cal/B&B	
GB	<i>Ginkgo biloba</i> 'Autumn Gold'	Autumn Gold ginkgo		2" Cal/B&B	
GBF	<i>Ginkgo biloba</i> 'Fastigiata'	Fastigiata ginkgo		2" Cal/B&B	
UN	<i>Ulmus x. New Horizon</i>	New Horizon Elm		2" Cal/B&B	
Ornamental Trees					
AP	<i>Amelanchier x. Grand 'Princess Diana'</i>	Princess Diana Serviceberry		1-1/2" Cal/B&B	
MP	<i>Malus x. 'Mary Potter'</i>	Mary Potter Crabapple		1-1/2" Cal/B&B	
MT	<i>Malus transitionalis</i> 'Schmidcutleaf'	Golden Raindrops Crabapple		1-1/2" Cal/B&B	
Deciduous Shrubs					
AM	<i>Aronia melanocarpa</i> 'Autumn Magic'	Autumn Magic Black Chokeberry	#3 cont.		space 4'-0" o.c.
CA	<i>Cotoneaster apiculatus</i>	Cranberry Cotoneaster	#3 cont.		space 4'-0" o.c.
CAH	<i>Clethra alnifolia</i> 'Hummingbird'	Hummingbird Clethra	#3 cont.		space 4'-0" o.c.
CP	<i>Cornus pumila</i>	Dwarf dogwood	#3 cont.		space 4'-0" o.c.
DR	<i>Diervilla lonicera</i>	Dwarf Bush Honeysuckle	#3 cont.		space 4'-0" o.c.
FS	<i>Forsythia 'Sunrise'</i>	Sunrise Forsythia	#5 cont.		space 5'-0" o.c.
HA	<i>Hydrangea arborescens</i> 'Annabelle'	Annabelle Hydrangea	#5 cont.		space 5'-0" o.c.
PFG	<i>Potentilla fruticosa</i> 'Goldfinger'	Goldfinger Potentilla	#3 cont.		space 4'-0" o.c.
RC	<i>Rosa 'Meipitac'</i>	Carefree Wonder Rose	#3 cont.		space 3'-0" o.c.
RR	<i>Rosa rugosa</i> 'Fru Dagmar Hastrup'	Fru Dagmar Hastrup rugosa rose	#3 cont.		space 4'-0" o.c.
RAG	<i>Rhus aromatica</i> 'Gro-Low'	Grow Low Sumac	#3 cont.		space 6'-0" o.c.
VD	<i>Viburnum dentatum</i> 'Blue Muffin'	Blue Muffin Viburnum	#5 cont.		space 6'-0" o.c.
WF	<i>Weigela florida</i> 'Polka'	Polka Weigela	#3 cont.		space 5'-0" o.c.
Perennials					
at	<i>Allium tanguticum</i> 'Summer Beauty'	Summer Beauty ornamental onion	1 qt. pot		space 18" o.c.
aff	<i>Athyrium filix-femina</i>	Lady Fern	1 qt. pot		space 15" o.c.
an	<i>Anemone sylvestris</i>	snowdrop anemone	1 qt. pot		space 15" o.c.
cb	<i>Calamagrostis brachytricha</i>	Korean feather reed grass	1 qt. pot		space 2' o.c.
dc	<i>Deschampsia caespitosa</i> 'Goldschleier'	hairgrass	1 qt. pot		space 18" o.c.
epm	<i>Echinacea purpurea</i> 'Kim's Mophead'	Mophead Coneflower	1 qt. pot.		as shown
epk	<i>Echinacea purpurea</i> 'Kim's Kneehigh'	Kneehigh Coneflower	1 qt. Pot.		as shown
gs	<i>Geranium sanguineum</i>	bloody cranesbill	1 qt. pot		space 18" o.c.; mix 3 cultivars in equal numbers
	<i>Geranium sanguineum</i> 'Alba'	white flowered cranesbill	1 qt. pot		
	<i>Geranium sanguineum</i> var. <i>striatum</i>	striped cranesbill	1 qt. pot		
hb	<i>Hemerocallis x</i> 'Barbara Mitchell'	Barbara Mitchell daylily	1 qt. pot		space 24" o.c.
hh	<i>Hemerocallis x</i> 'Happy Returns'	Happy Returns daylily	1 qt. pot		space 18" o.c.
hl	<i>Hemerocallis x</i> 'Little Grapette'	Little Grapette daylily	1 qt. pot		space 15" o.c.
hbt	<i>Hemerocallis x</i> 'Bitsy'	Bitsy Daylily	1 qt. pot		as shown
hcl	<i>Hemerocallis x. 'Crimson Icon'</i>	Crimson Icon Daylily	1 qt. pot		as shown
Evergreen Shrubs					
JC	<i>Juniperus x pfitzeriana</i> 'Kallay's Compact'	Kallay's Compact Juniper	#3 cont.		space 4'-0" o.c.
JCS	<i>Juniperus chinensis</i> 'Sea Green'	Sea Green Juniper	#3 cont.		space 5'-0" o.c.
JCG	<i>Juniperus chinensis</i> var. <i>sargentii</i> 'Glauc'	Blue Sargent Juniper	#3 cont.		space 4'-0" o.c.
BR Bioretention Plants					
	<i>Asclepias incarnata</i>	Red Milkweed	plug		(evenly mixed, 12" o.c.)
	<i>Aster nova-angliae</i>	New England Aster	plug		(evenly mixed, 12" o.c.)
	<i>Carex lurida</i>	Bottlebrush Sedge	4 1/2" cont.		(evenly mixed, 12" o.c.)
	<i>Carex vulpinoidea</i>	Fox sedge	4 1/2" cont.		(evenly mixed, 12" o.c.)
	<i>Elymus canadensis</i>	Canada wild rye	plug		(evenly mixed, 12" o.c.)
	<i>Eupatorium maculatum</i>	Joe Pye Weed	plug		(evenly mixed, 12" o.c.)
	<i>Iris versicolor</i>	Blue Flag Iris	plug		(evenly mixed, 12" o.c.)
	<i>Liatris spicata</i>	Marsh Blazing Star	plug		(evenly mixed, 12" o.c.)
	<i>Lobelia cardinalis</i>	Cardinal Flower	plug		(evenly mixed, 12" o.c.)
	<i>Monarda fistula</i>	Bergamot	plug		(evenly mixed, 12" o.c.)
	<i>Panicum virgatum</i>	switchgrass	4 1/2" cont.		(evenly mixed, 12" o.c.)
	<i>Rudbeckia subtomentosa</i>	Sweet Black-eyed Susan	plug		(evenly mixed, 12" o.c.)
	<i>Silphium perfoliatum</i>	Cupplant	plug		(evenly mixed, 12" o.c.)
	<i>Spartina pectinata</i>	Prairie Cord Grass	4 1/2" cont.		(evenly mixed, 12" o.c.)
	<i>Veronica fasciculata</i>	Ironweed	plug		(evenly mixed, 12" o.c.)

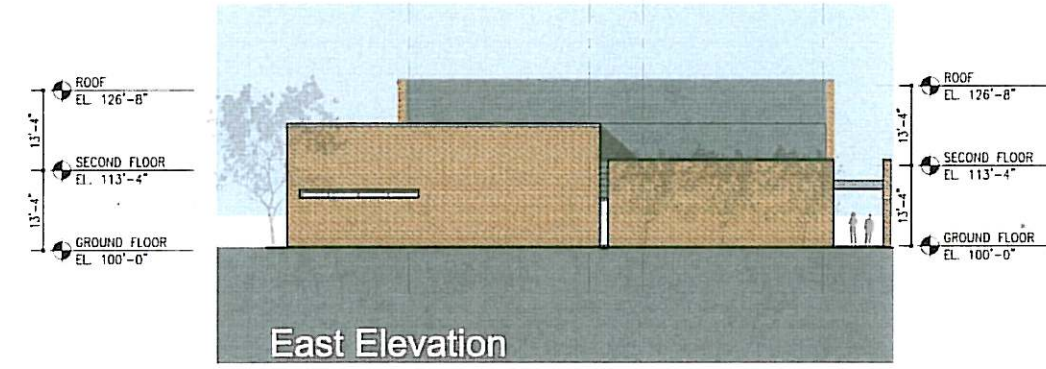
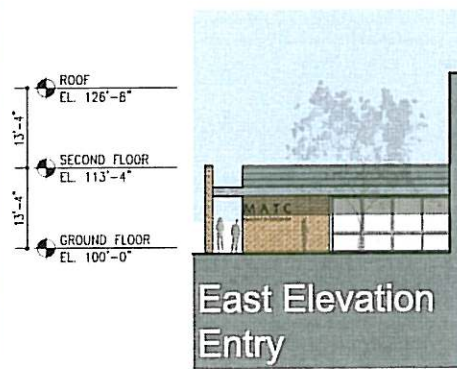
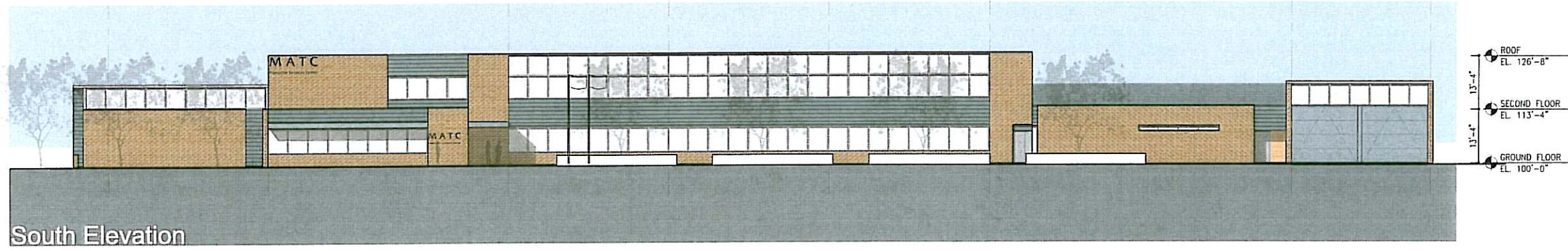
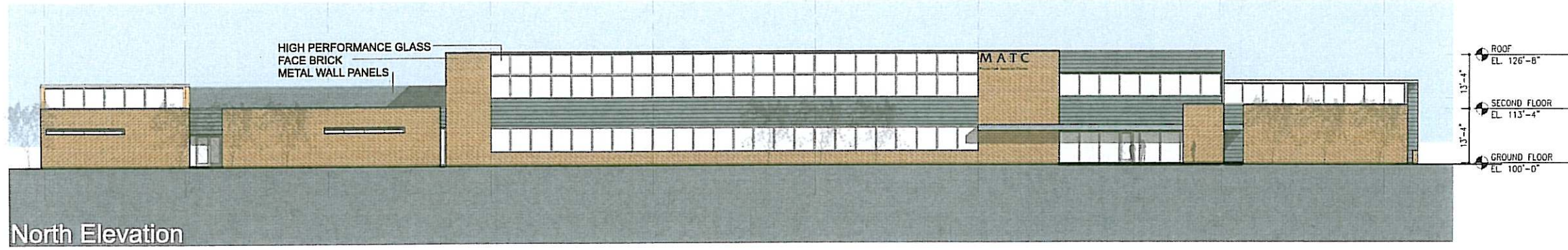


Packers Ave.

Pankratz St.

MATC Protective Services Center - Planting Plan





MATC Protective Services Center - Elevations





Southeast Aerial View



South Elevation from Packers Ave.



West Elevation from Packers Ave



Main Entry View