

SUMMIT CREDIT UNION DOWNTOWN BRANCH ALTERATIONS

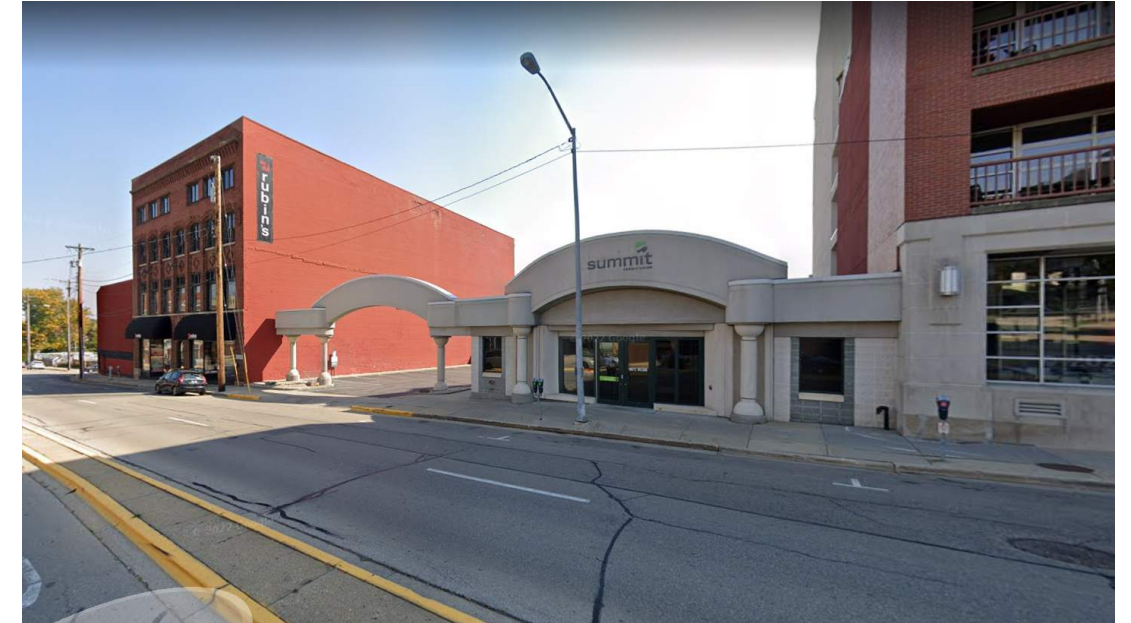
UDC INITIAL / FINAL SUBMITTAL



SITE CONTEXT



AERIAL IMAGE OF DOWNTOWN MADISON LOOKING WEST



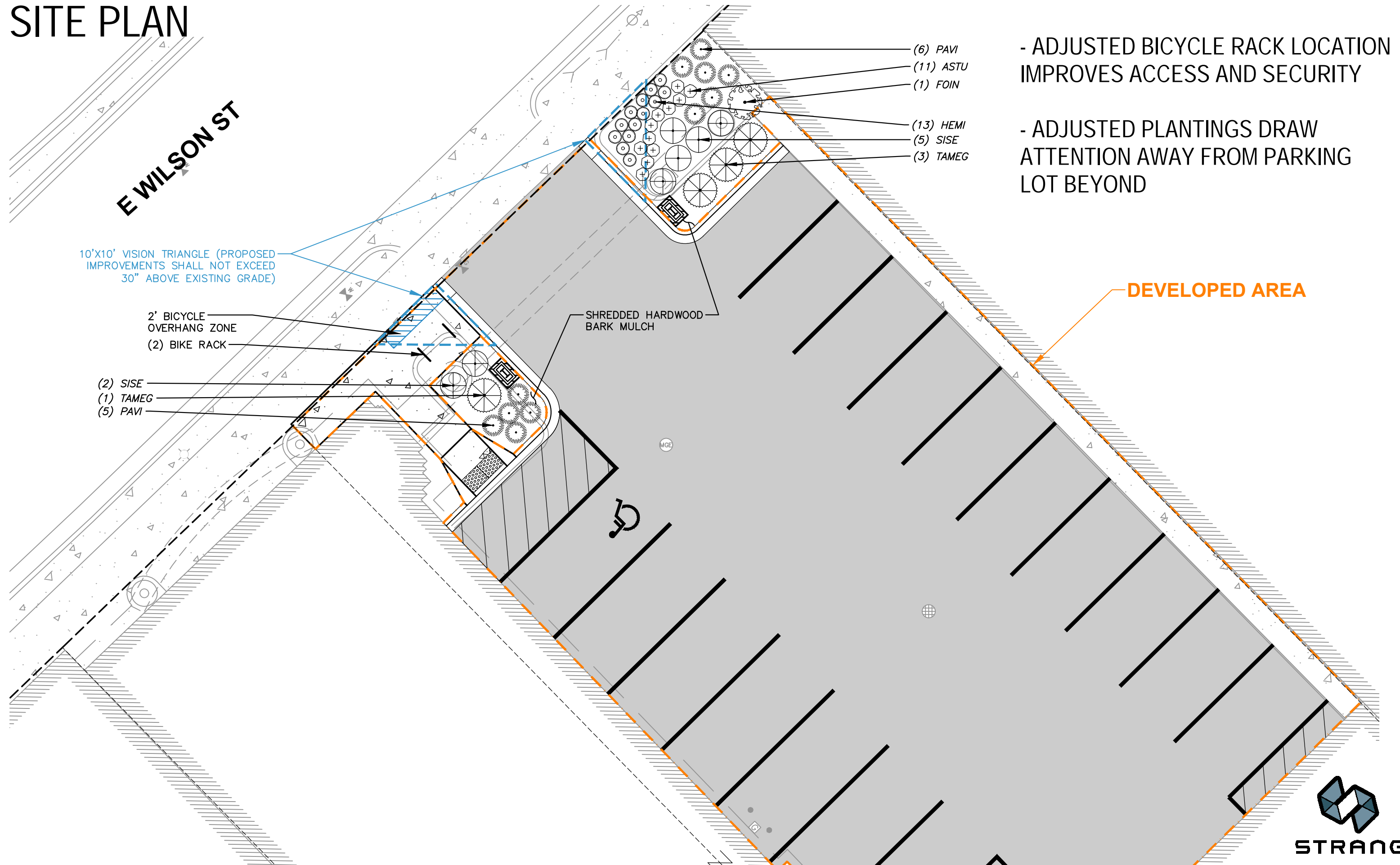
EXISTING WILSON ST. FACADE



EXISTING JOHN NOLEN BLVD. FACADE



SITE PLAN



- ADJUSTED BICYCLE RACK LOCATION IMPROVES ACCESS AND SECURITY

- ADJUSTED PLANTINGS DRAW ATTENTION AWAY FROM PARKING LOT BEYOND

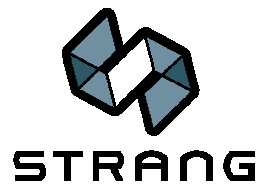
DEVELOPED AREA



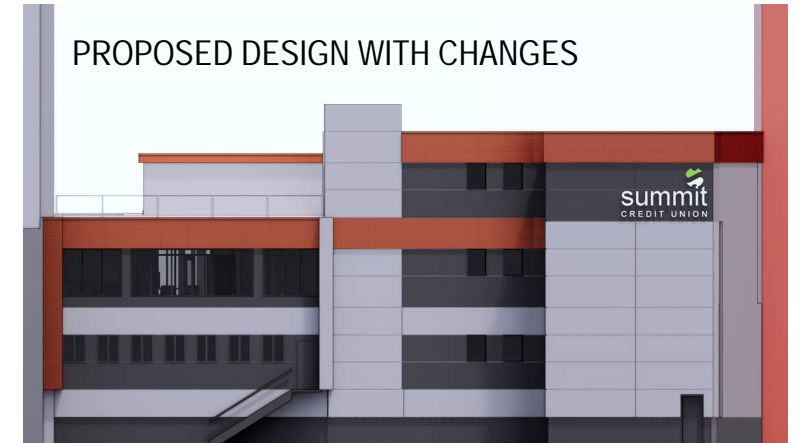
WILSON STREET FRONTAGE



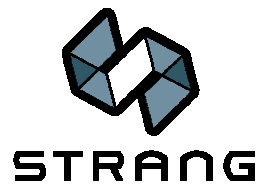
- NEW PROPORTIONS OF ENTRY VOLUME IMPROVE PEDESTRIAN EXPERIENCE OF STREET EDGE
- ELIMINATION OF VERTICAL FIN REDUCES COMPLEX DETAILING AND MAINTENANCE AT THE SIDEWALK
- HORIZONTAL BANDS ARE MORE CONSISTENT WITH JOHN NOLEN FACADE



JOHN NOLEN FRONTAGE



- SIMPLIFICATION OF DESIGN AND PAINT COLORS REDUCES VISUAL COMPLEXITY



THANK YOU!

