

# OLIN PARK FACILITY

Renovation Project Update  
December 9, 2020



# UPDATE ITEMS

- 1. Project Overview**
- 2. Consultant team**
- 3. Pre-Design Work**
- 4. Building Systems**
- 5. Access Improvements**
- 6. Space Programming**
- 7. Project Schedule**



# PROJECT OVERVIEW



# PROJECT OVERVIEW



# PROJECT OVERVIEW

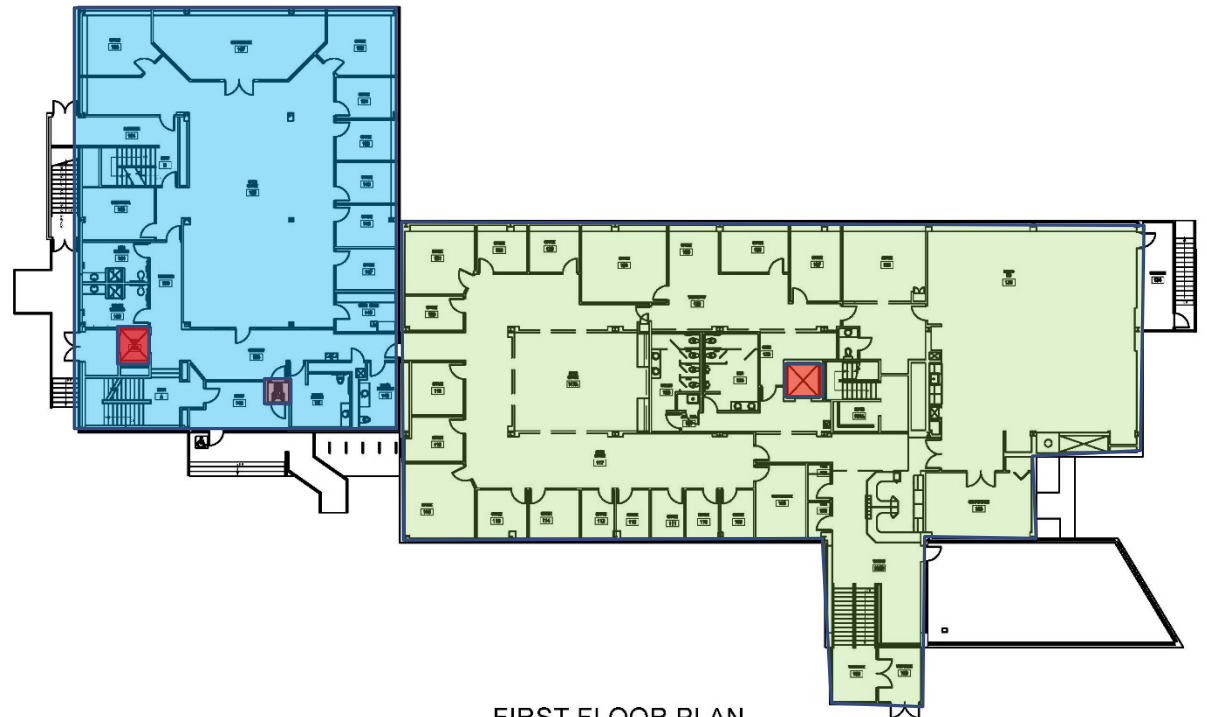


# PROJECT OVERVIEW



Site Plan

West Wing ~19,000 sf (three floors)



FIRST FLOOR PLAN

East Wing ~24,000 sf (two floors)

# CONSULTANT TEAM

**Insite Consulting Architects – Team Lead and Architectural Design**

**IMEG – MEP Engineering**

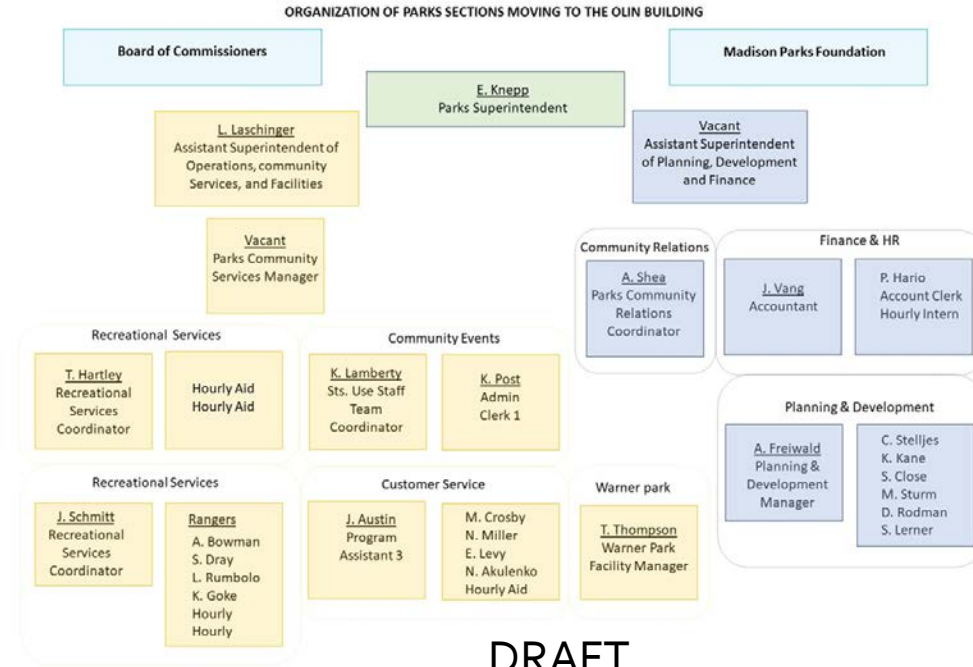
**Ken Saiki Design – Site Design**

**Burse Surveying and Engineering – Civil Engineering**

**Performance Elevator Consulting**

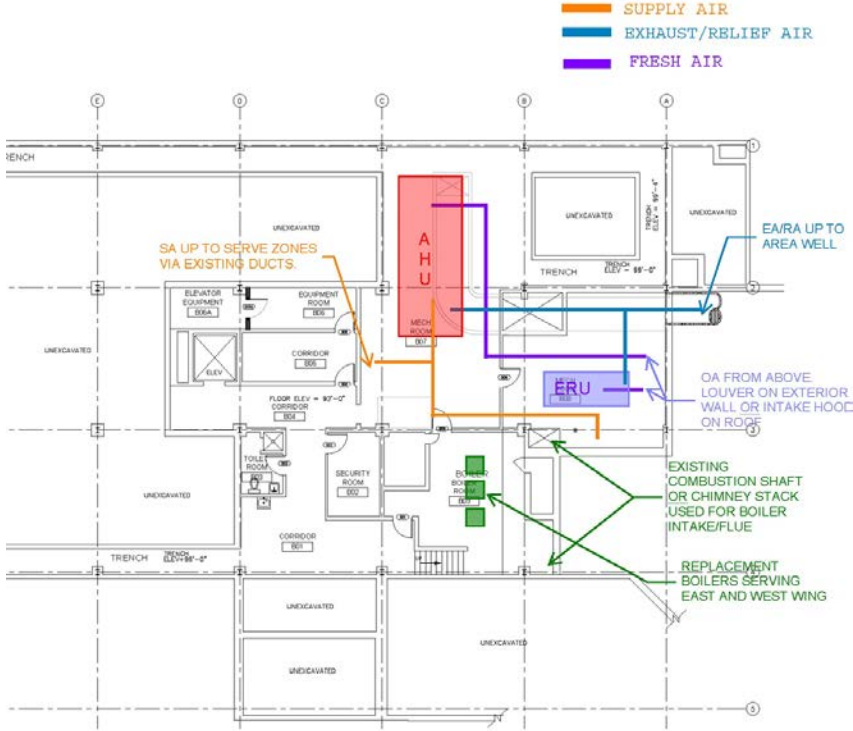


# PRE-DESIGN WORK





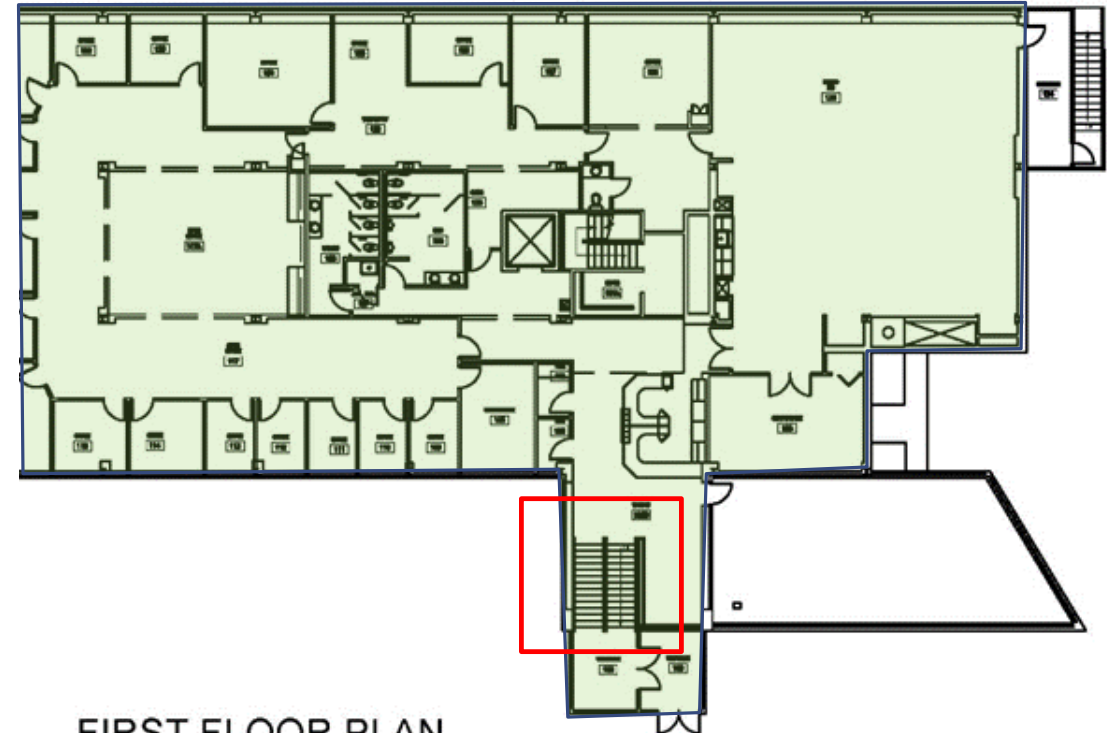
# BUILDING SYSTEMS



DRAFT

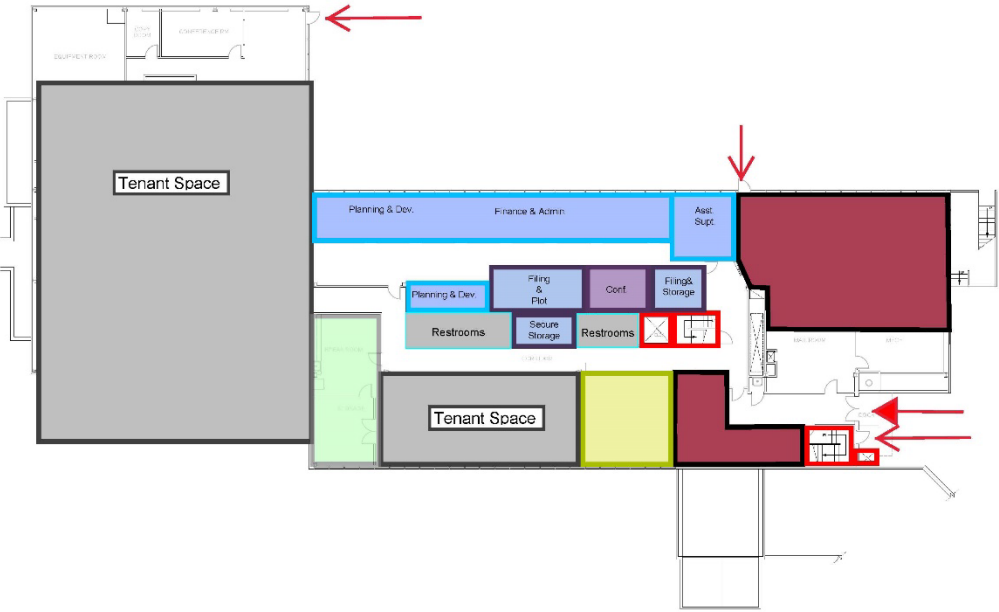


# ACCESS IMPROVEMENTS



FIRST FLOOR PLAN

# SPACE PROGRAMMING



DRAFT

GROUND FLOOR DIAGRAM

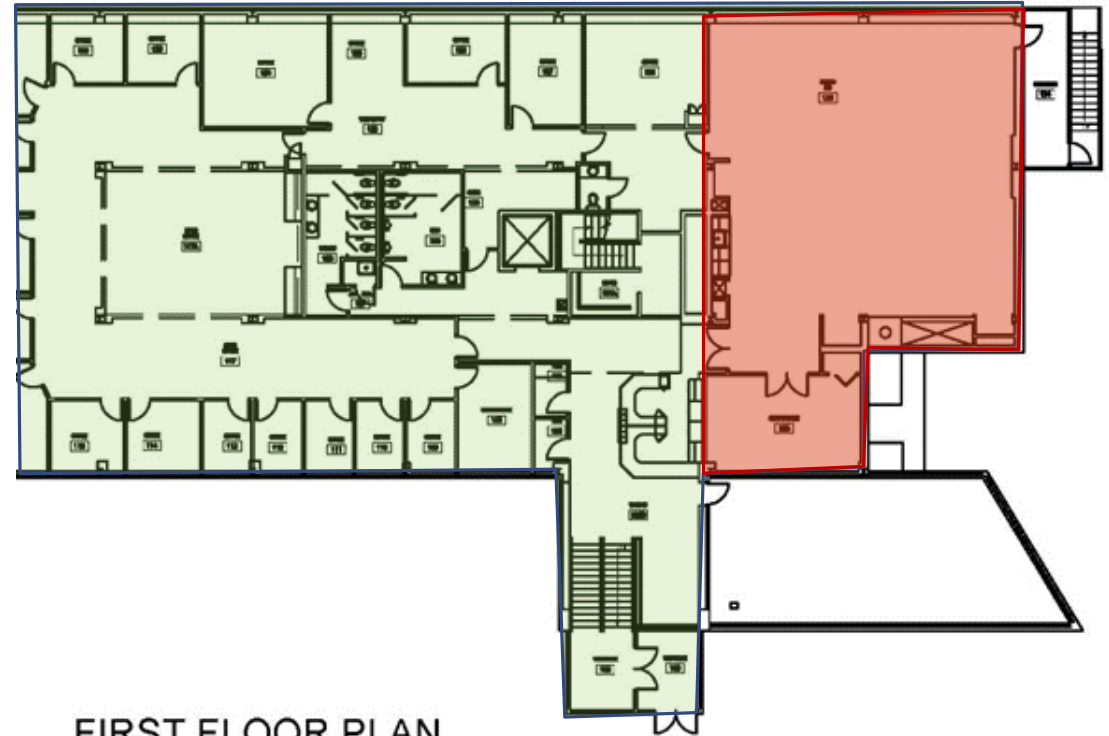


DRAFT

FIRST FLOOR DIAGRAM



# SPACE PROGRAMMING



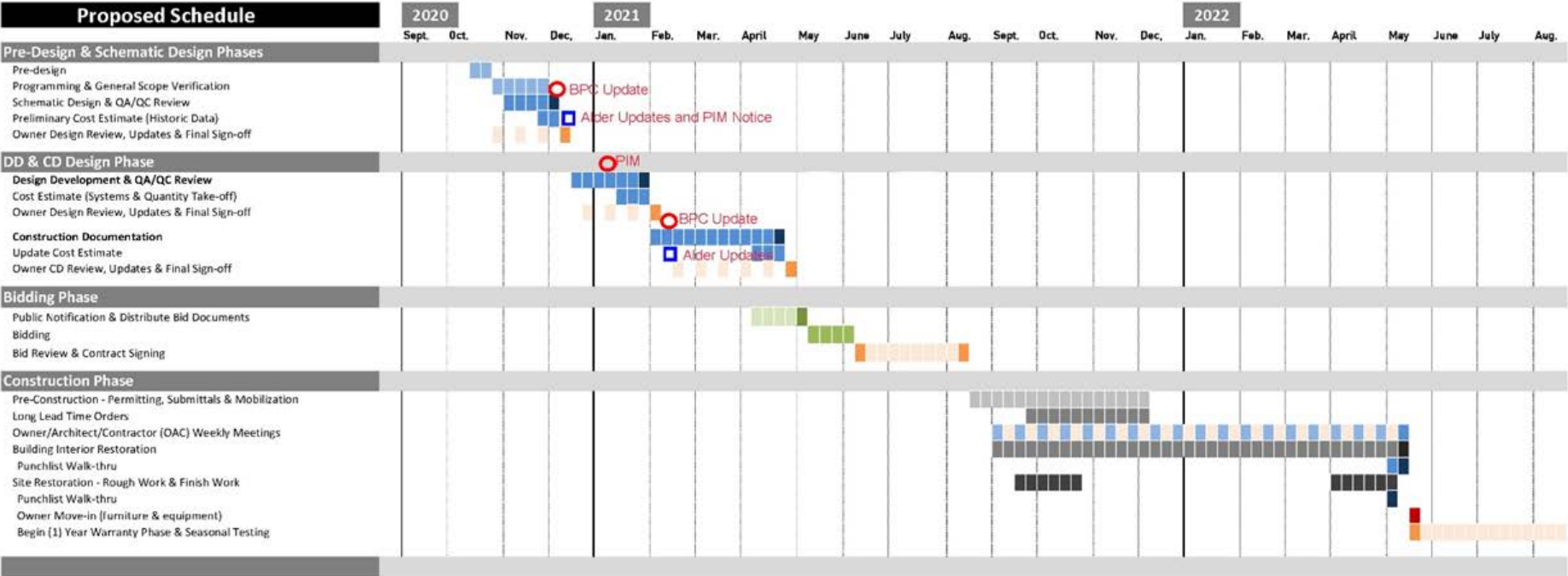
FIRST FLOOR PLAN

# PROJECT SCHEDULE

## Olin Park Building Improvements City of Madison Project Schedule

BPC, UDC and Plan Commission meetings

9/9/2020



DRAFT

