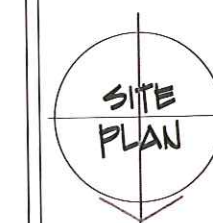


Version/Date:
CRAIGGURDA
1/9B
7/29/08
Printed by:
MWS

ADDITION & REMODEL
BETTY CRAIG & BOB GURDA
1810 CHADBOURNE AVE.
MADISON, WI. 53726

**ASSOCIATED
HOUSEWRIGHTS**
1217 Culmen St. Madison, WI. 53713
www.housewrights.com
(608) 238 - 7519



Page Scale:
1/8" = 1'

Page

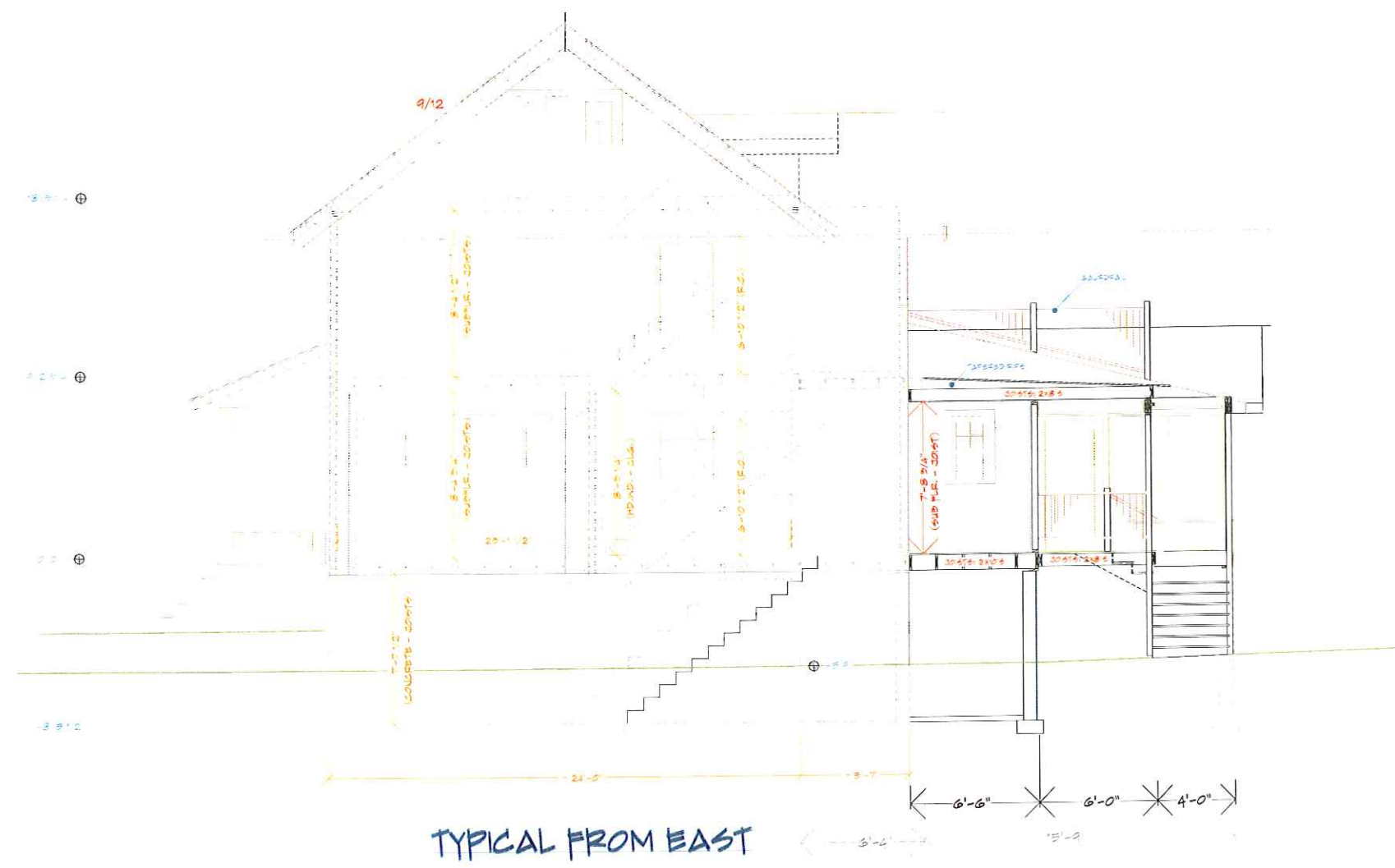
EXISTING 1st STORY CONDITIONED SPACE = 280 SF
NEW 2ND STORY CONDITIONED SPACE = 574 SF
TOTAL EXISTING CONDITIONED SPACE (INCLUDES PORCH) = 1808 SF
NEW 1st STORY ROOFED PORCH/STAIR = 150 SF

NEW 1st STORY CONDITIONED SPACE = 205 SF
NEW 2ND STORY CONDITIONED SPACE = 190 SF
TOTAL NEW CONDITIONED SPACE (INCLUDES PORCH) = 395 SF
NEW 1st STORY ROOFED PORCH/STAIR = 124 SF



Version/Date:
CRAIGGURDA
1/9B
7/29/08
Printed by:
MWS

ADDITION & REMODEL
BETTY CRAIG & BOB GURDA
1810 CHADBOURNE AVE.
MADISON, WI. 53726



TYPICAL FROM EAST



NEW

ASSOCIATED HOUSEWRIGHTS
1217 Culmen St. Madison, WI. 53713
www.housewrights.com
(608) 238 - 7519

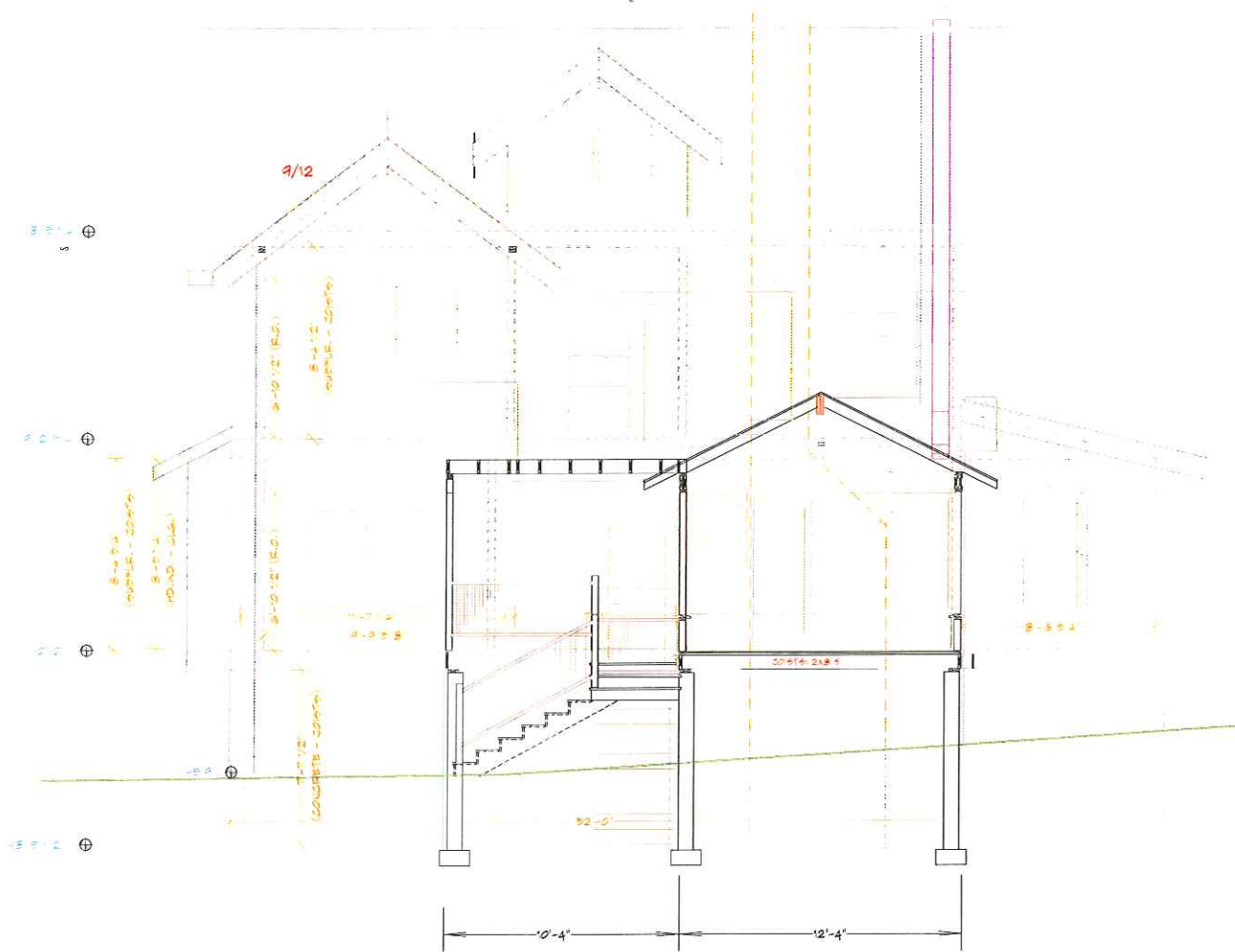
TYP. SECT'S.

Page Scale:
1/4" = 1'

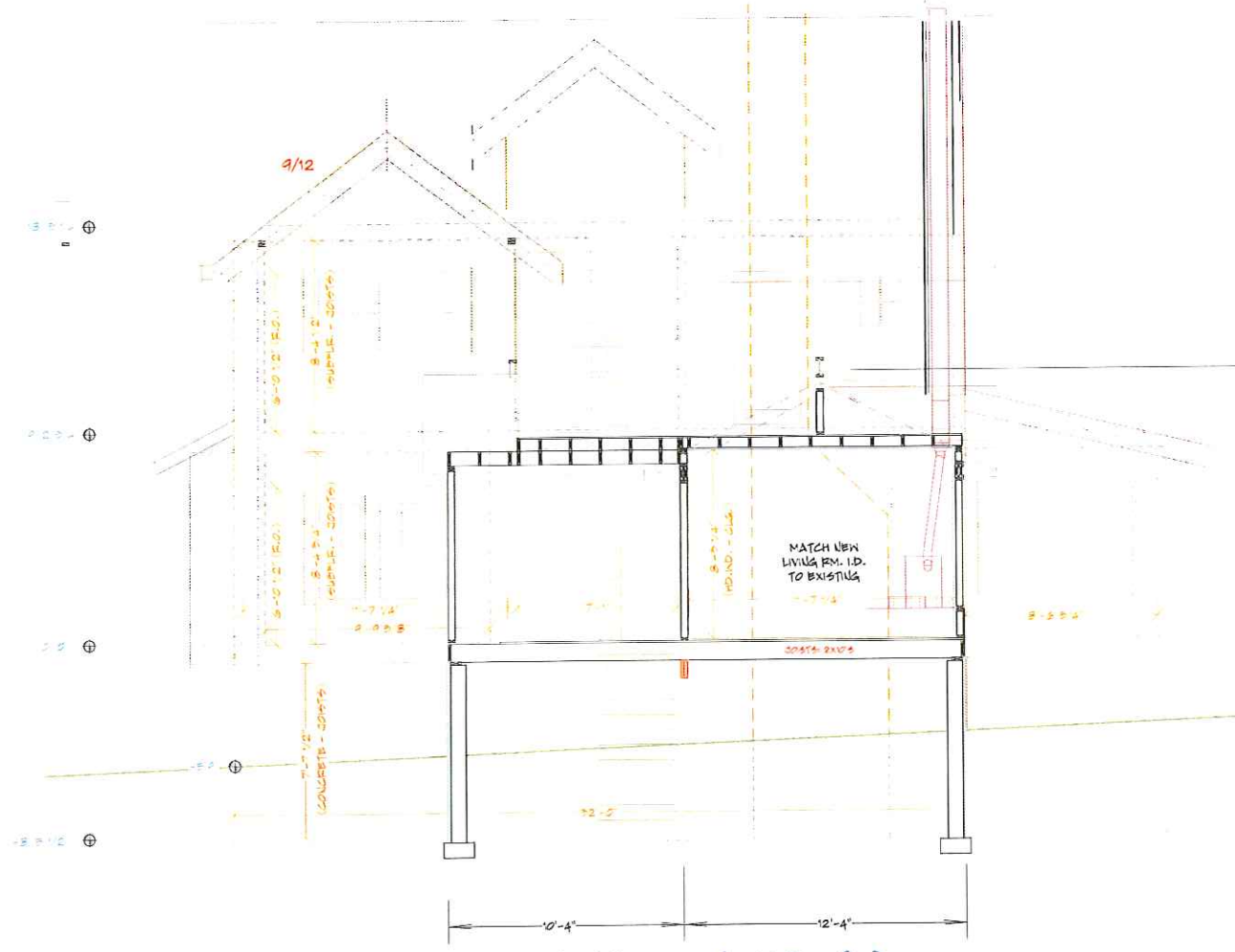
Page

Version/Date:
CRAIG GURDA
1/9B
7/29/08
Printed by:
MWS

ADDITION & REMODEL
BETTY CRAIG & BOB GURDA
1810 CHADBOURNE AVE.
MADISON, WI. 53726



TYPICAL FROM NORTH (A)



TYPICAL FROM NORTH (B)



NEW



ASSOCIATED
HOUSEWRIGHTS
1217 Culmen St. Madison, WI. 53713
www.housewrights.com
(608) 238 - 7519

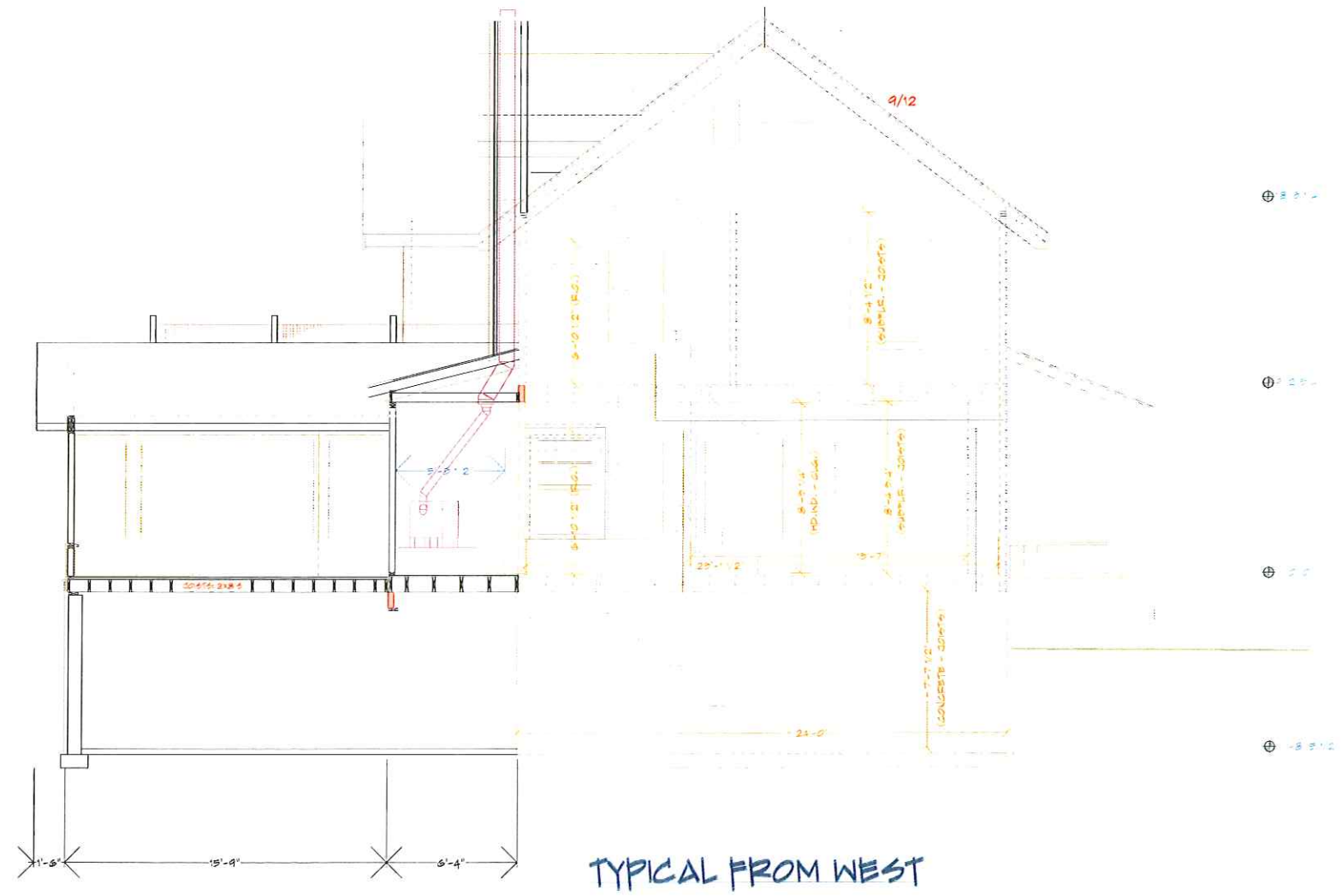


Page Scale:
1/4" = 1'

Page

Version/Date:
CRAIGGURDA
119B
7/29/08
Printed by:
MWS

ADDITION & REMODEL
BETTY CRAIG & BOB GURDA
1810 CHADBOURNE AVE.
MADISON, WI. 53726



TYPICAL FROM WEST



**ASSOCIATED
HOUSEWRIGHTS**
1217 Culmen St. Madison, WI. 53713
www.housewrights.com
(608) 238 - 7519

TYP.
SECT'S.

Page Scale:
1/4" = 1'

Page