

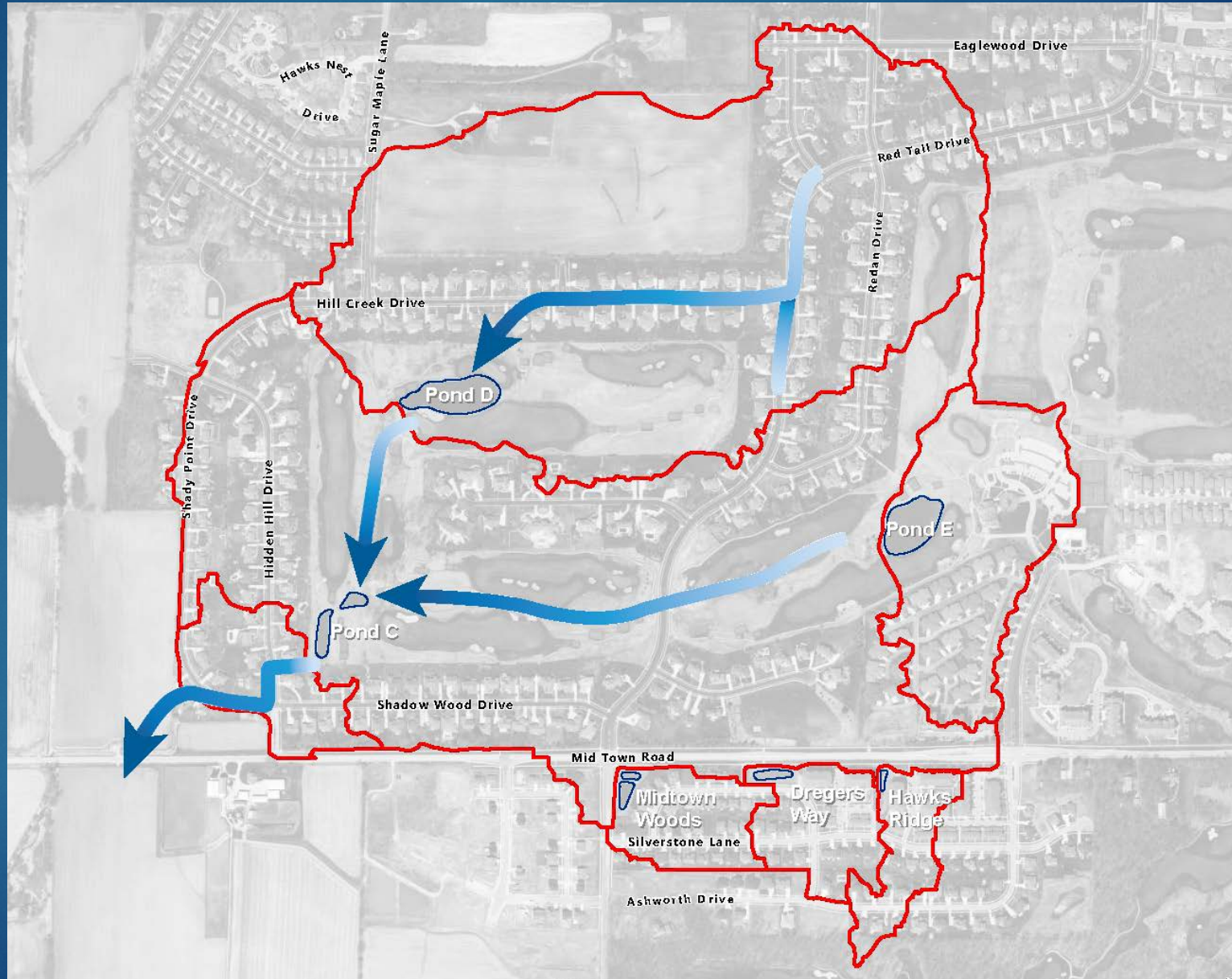


# Hawks Landing Neighborhood Flood Mitigation







MADISON BOARD OF PARKS COMMISSION

APRIL 10, 2019

# Existing Drainage Pattern



# Legend

-  Hawks Landing Boundary
-  Public Storm Structures
-  Public Storm Pipes
-  Vegetated Buffers
-  Drainage Ways
-  Ponds



# Existing Flooding and Drainage Issues



# Existing Flooding and Drainage Issues



**MSA**

Data Sources:  
 Parcels: Dane County (2018)  
 Aerial: Dane County (2017)  
 Storm System: City of Madison

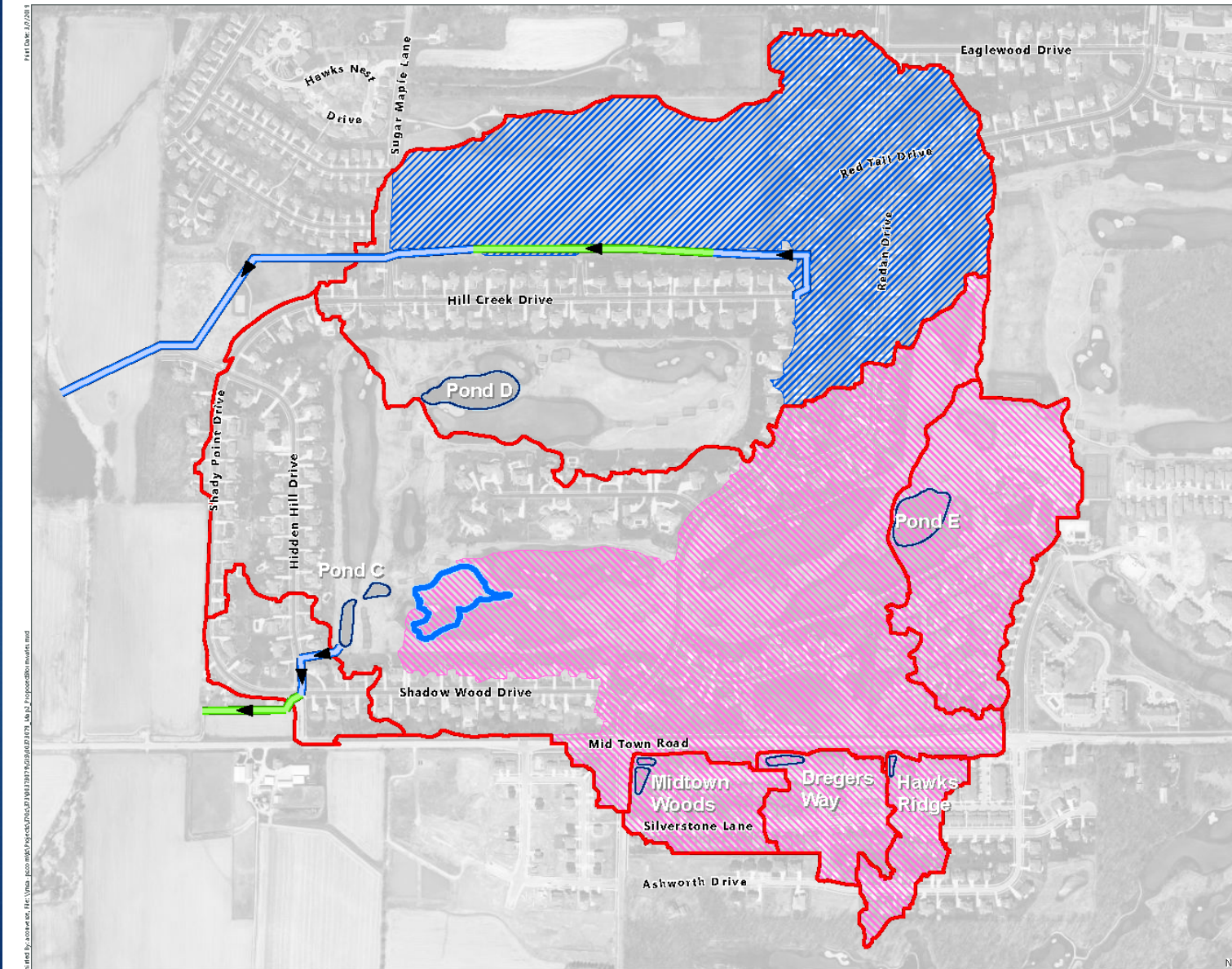
0 75 150 Feet

- Stormline
  - Storm Structure
  - Parcel
  - 📍 Point of Inflow to 2D Model
- | Flooding Depth (ft) | Color        |
|---------------------|--------------|
| <= 0.25             | Dark Blue    |
| 0.26 - 0.5          | Medium Blue  |
| 0.51 - 1            | Light Blue   |
| 1.1 - 1.5           | Yellow-Green |
| 1.6 - 2             | Yellow       |
| 2.1 - 2.5           | Orange       |
| 2.6 - 3             | Dark Orange  |
| > 3                 | Red          |

100-year Rainfall Event:  
6.66"

**Map 3**  
**Northern Existing Conditions**  
 Hill Creek Drive Flood Reduction Study  
 City of Madison  
 Dane County, WI

# Proposed Drainage Pattern



## Map 2 Proposed Stormwater Management System

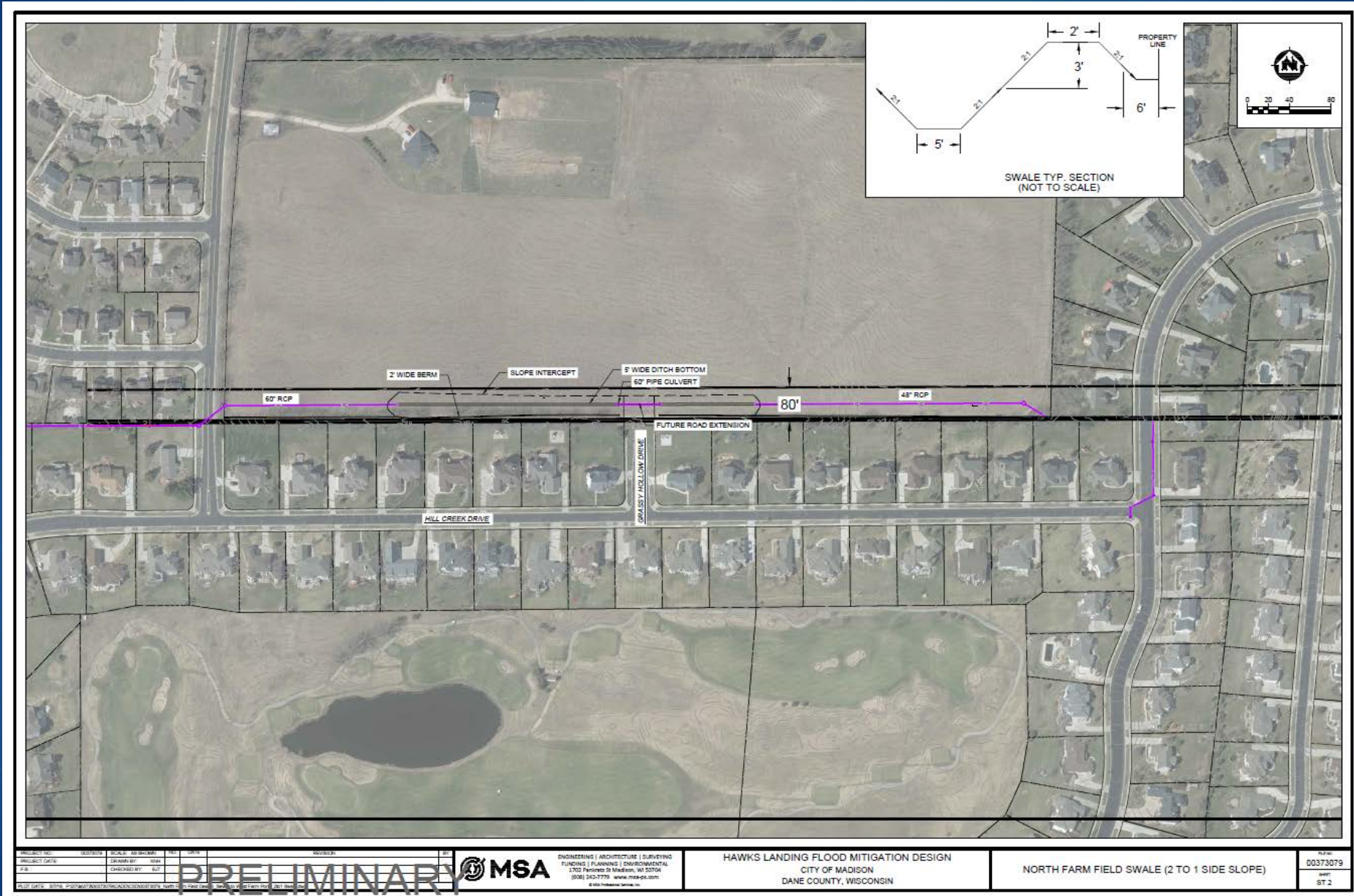
Hill Creek Drive Flood Reduction

City of Madison  
Dane County, WI

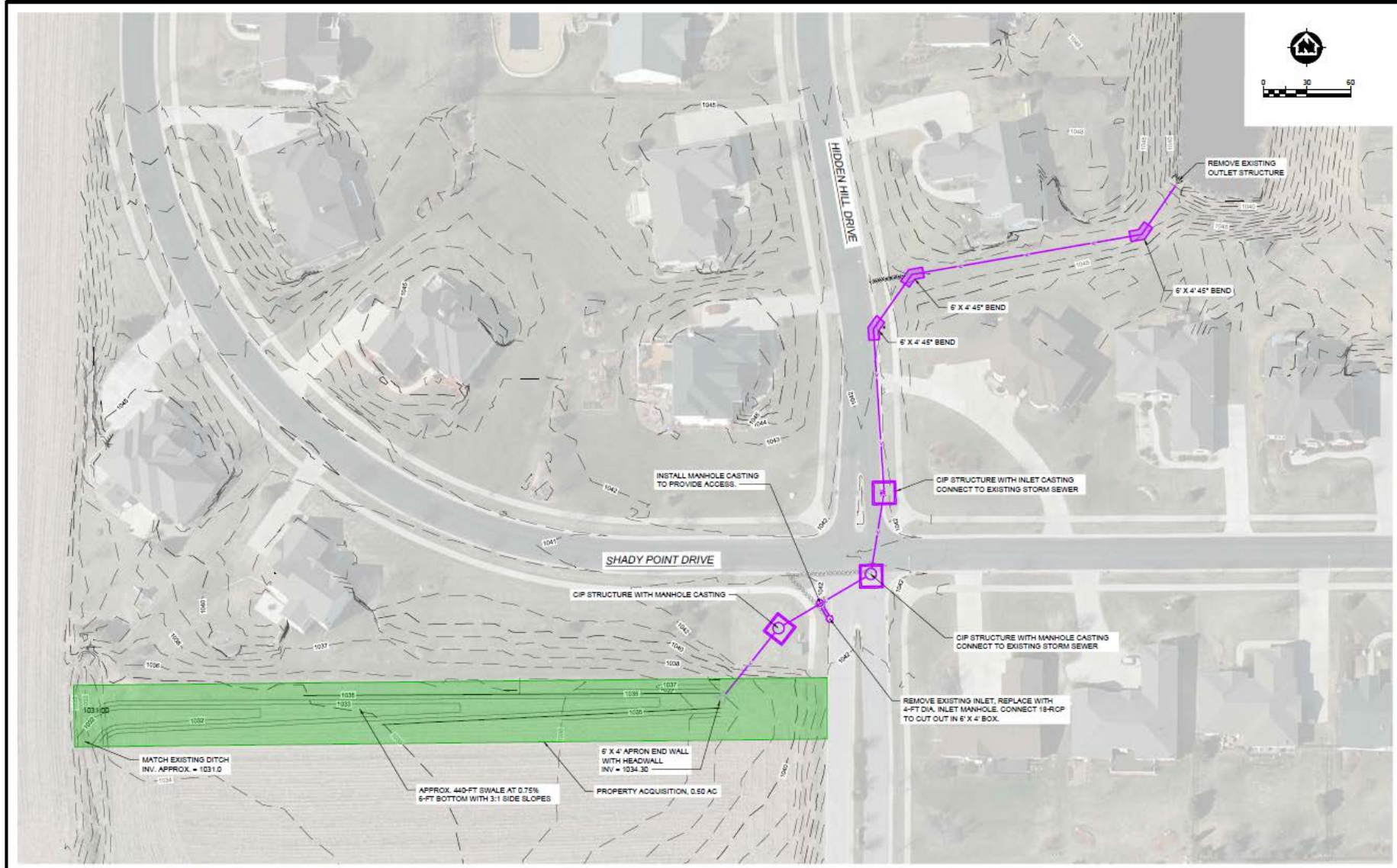
- Watershed
- Existing Pond
- New Stormwater Pond
- Area diverted by new storm sewer and swale system
- Area served by new stormwater pond
- Stormwater Improvements
  - Pipe
  - Swale

Data Sources:  
Road Names: Dane County  
Aerial: Dane County (2017)

# Proposed Drainage Pattern



# Proposed Drainage Pattern



PROJECT NO. 0033074	SCALE: AS SHOWN	DATE: 08/17/16	REVISED BY: NWS	DATE: 08/17/16	BY: NWS
PROJECT DATE: 7/16	DRAWN BY: NWS	CHECKED BY: SUT			
<b>PRELIMINARY</b>			ENGINEERING   ARCHITECTURE   SURVEYING FUNDING   PLANNING   ENVIRONMENTAL 2611 INTERNATIONAL LN MADISON, WI 53704 (608) 243-7776 www.msa-usa.com		
HAWKS LANDING FLOOD MITIGATION DESIGN CITY OF MADISON DANE COUNTY, WISCONSIN			HIDDEN HILL STORM SEWER REALIGNMENT SHEET ST 1		



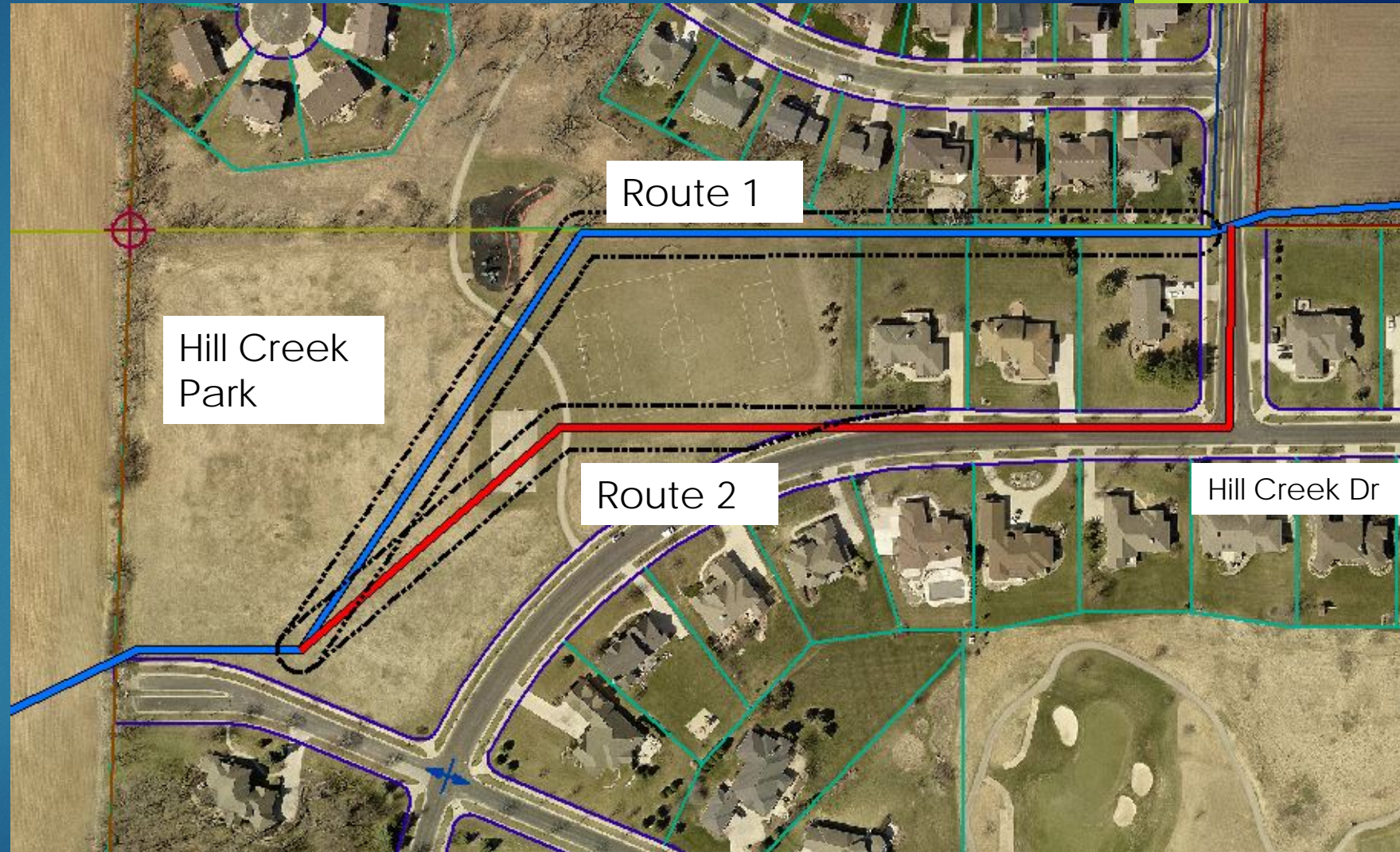
# Proposed Pipe through Park

## ▶ Route 1

- ▶ Rock encountered
- ▶ Additional easements required and more disturbance to park and properties

## ▶ Route 2

- ▶ Verifying rock with soil borings
- ▶ More expensive; additional roadway replacement (rated 8 & 9)
- ▶ Storm sewer depths vary from ~10 to 25ft deep
- ▶ Limits of disturbance approximately 30-50 ft wide depending on depth of storm sewer
- ▶ Will replace all park amenities if disturbed



# Schedule

- ▶ Relocation order for easements and land acquisition
  - ▶ Spring 2019-Fall 2019
- ▶ Construction Fall 2019 or Spring 2020 depending on timing of land acquisition
- ▶ Coincides with the planning for future Hill Creek Park expansion
- ▶ QUESTIONS?