

The Edgewater

666 Wisconsin Avenue
Madison, WI 53703

OWNER

Landmark X, LLC

22 East Mifflin, Suite 800
Madison, WI 53703
T. 608.274.7447
F. 608.274.7424

ARCHITECT

Elkus I Manfredi Architects Ltd

300 A Street
Boston, Massachusetts 02210
T. 617 426 1300
F. 617 426 7502

LANDSCAPE ARCHITECT

Ken Saiki Designs, Inc.

303 S.Patterson, Suite One
T. 608-251-3600
F. 608-251-2330

DEVELOPER

Hammes Company

22 East Mifflin, Suite 800
Madison, WI 53703
T. 608.274.7447
F. 608.274.7424

CIVIL ENGINEER

BT?, Inc.

2830 Dairy Drive
Madison, WI 53718
T. 608.224.2830
F. 608.224.2839

DRAWING LIST:

ARCHITECTURAL

- A1.00 DOCK LEVEL PLAN
- A1.01 LOWER LEVEL 6 FLOOR PLAN
- A1.02 LOWER LEVEL 5 FLOOR PLAN
- A1.03 LOWER LEVEL 4 FLOOR PLAN
- A1.04 LOWER LEVEL 3 FLOOR PLAN
- A1.05 LOWER LEVEL 2 FLOOR PLAN - PLAZA
- A1.06 LOWER LEVEL 1 FLOOR PLAN - AUTO COURT
- A1.07 LEVEL 1 FLOOR PLAN - LANGDON STREET
- A1.08 NEW HOTEL FLOOR 2 PLAN
EXISTING HOTEL FLOORS 2-4 PLAN
- A1.09 NEW HOTEL FLOORS 3-5 PLAN
EXISTING HOTEL FLOOR 5 PLAN
- A1.10 NEW HOTEL FLOORS 6 PLAN
EXISTING HOTEL ROOF PLAN
- A1.11 NEW HOTEL FLOORS 7-8 PLAN
EXISTING HOTEL ROOF PLAN
- A1.12 NEW HOTEL ROOF ACCESS LEVEL
EXISTING HOTEL ROOF PLAN
- A1.13 HOTEL ROOF PLANS
- A1.14 PARKING PLANS
- A1.15 PARKING PLAN AT ENTRANCE
AND SECTIONS

- A3.01 PLAZA DETAILS
- A3.02 ELEVATION DETAILS
- A3.03 1940'S ELEVATION DETAILS
- A3.04 SHADOW STUDY
- A3.05 SHADOW STUDY
- A3.06 SHADOW STUDY
- A3.07 SHADOW STUDY

LANDSCAPE

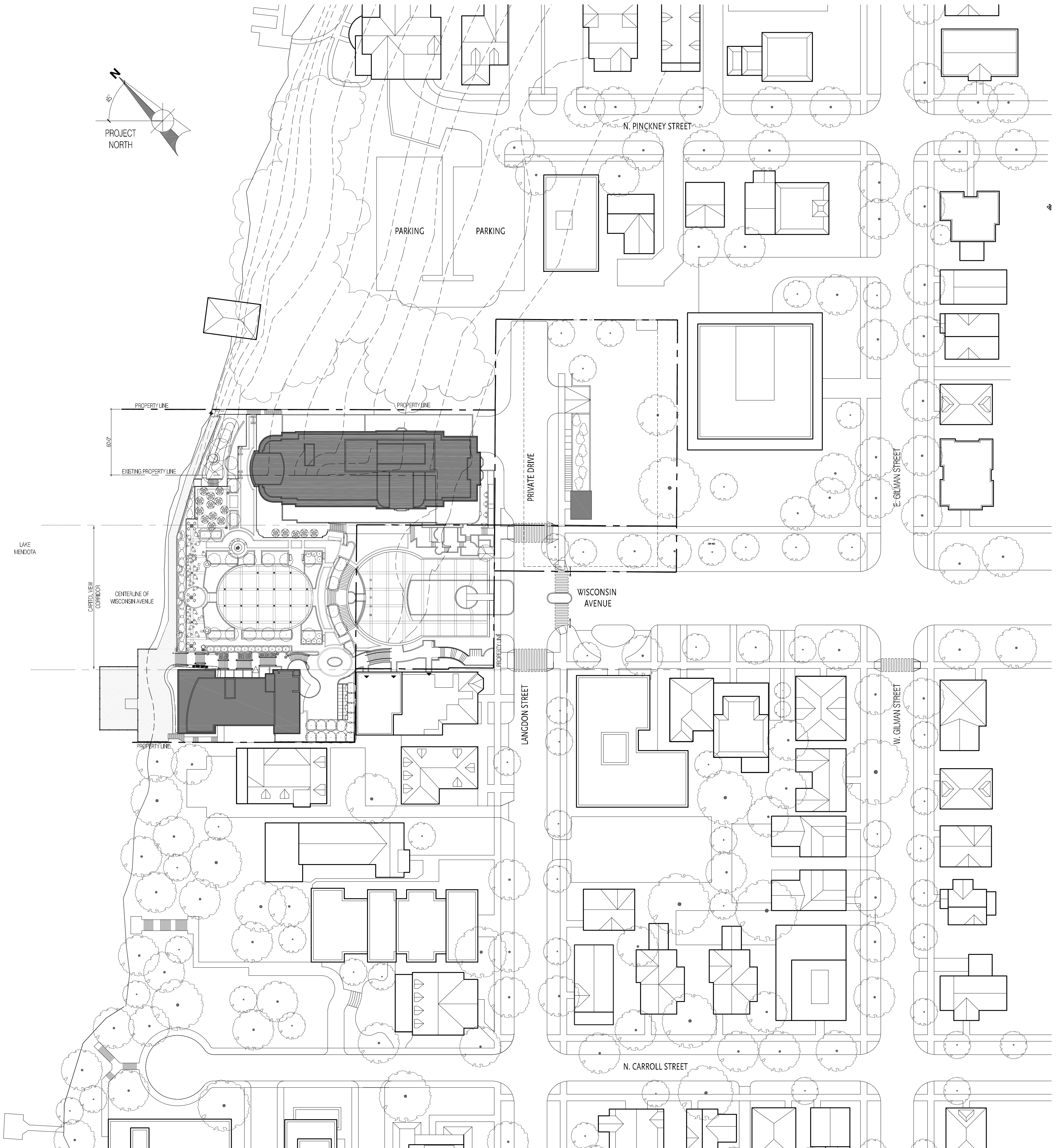
- A4.01 LANDSCAPE PLAN
- A4.02 PLANTING PLAN ENLARGEMENTS
- A4.03 TREE INVENTORY

CIVIL

- C1.01 SITE SURVEY
- C1.02 PROPERTY TRANSFER DIAGRAM
- C1.03 GRADING AND EROSION CONTROL PLAN
- C1.04 UTILITY PLAN
- C1.05 FIRE DEPARTMENT ACCESS PLAN
- C1.06 SITE PLAN

- A2.00 CONTEXT ELEVATIONS
- A2.01 ELEVATIONS
- A2.02 ELEVATIONS
- A2.03 ELEVATIONS & SECTIONS
- A2.04 ELEVATIONS & SECTIONS
- A2.05 BASE ELEVATION & PERSPECTIVE
- A2.06 BUILDING BASE ELEVATION
- A2.07 BUILDING MIDDLE ELEVATION
- A2.08 BUILDING TOP ELEVATION

MARCH 10, 2010



The Edgewater

666 Wisconsin Avenue
Madison, WI 53703

Owner:
Landmark X, LLC
22 East Millin Street, Suite 800
Madison, WI 53703

Developer:
Hammes Company
22 East Millin Street, Suite 800
Madison, WI 53703

Civil Engineer:
BT² Inc.
2830 Dairy Drive
Madison, WI 53718

Landscape Architect:
Ken Saiki Design, Inc.
303 S. Patterson, Suite One
Madison, WI 53703

PROJECT NUMBER: 08105.00

DATE: March 10, 2010

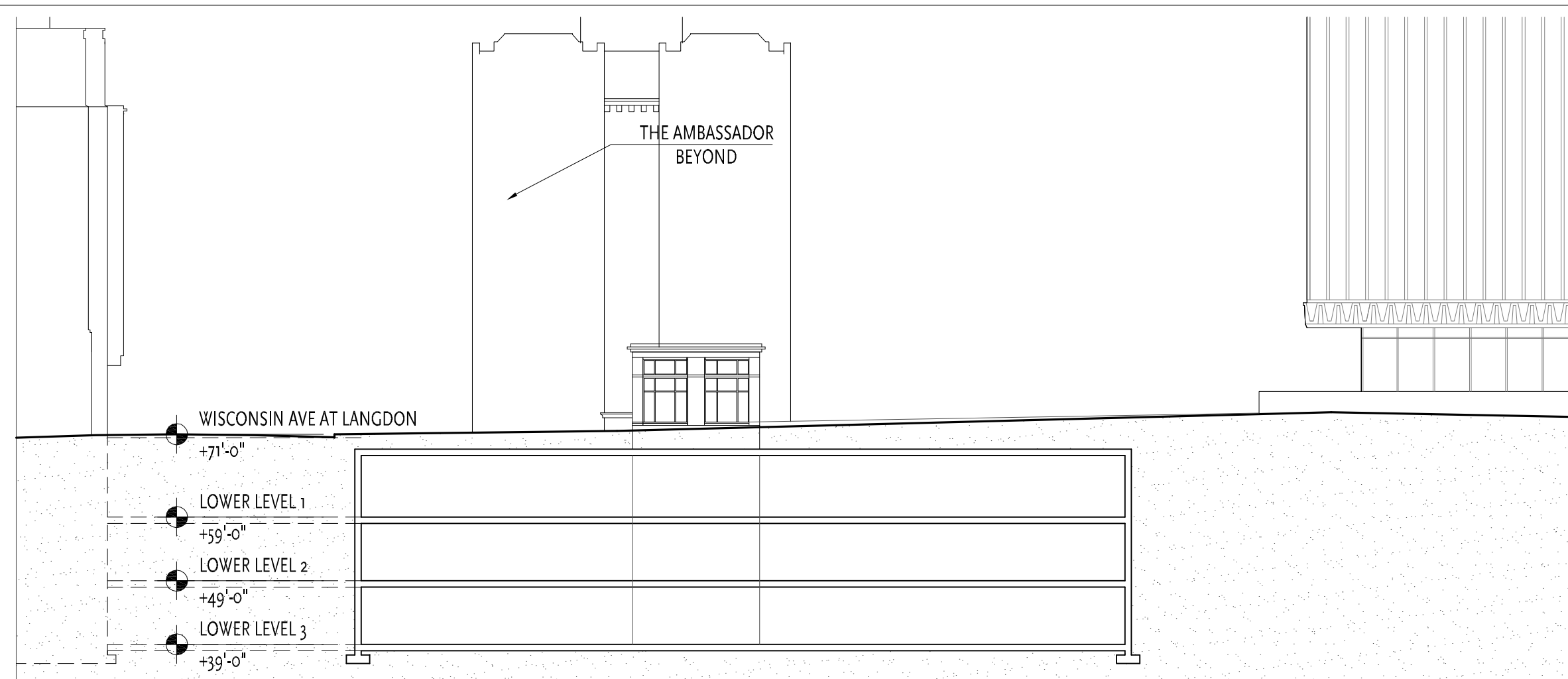
REVISIONS:
6 03/10/10

SCALE: 1" = 20'-0"

DRAWING NAME:
Parking Plan at Entrance,
Sections, and Partial
Elevations

DRAWING NUMBER:

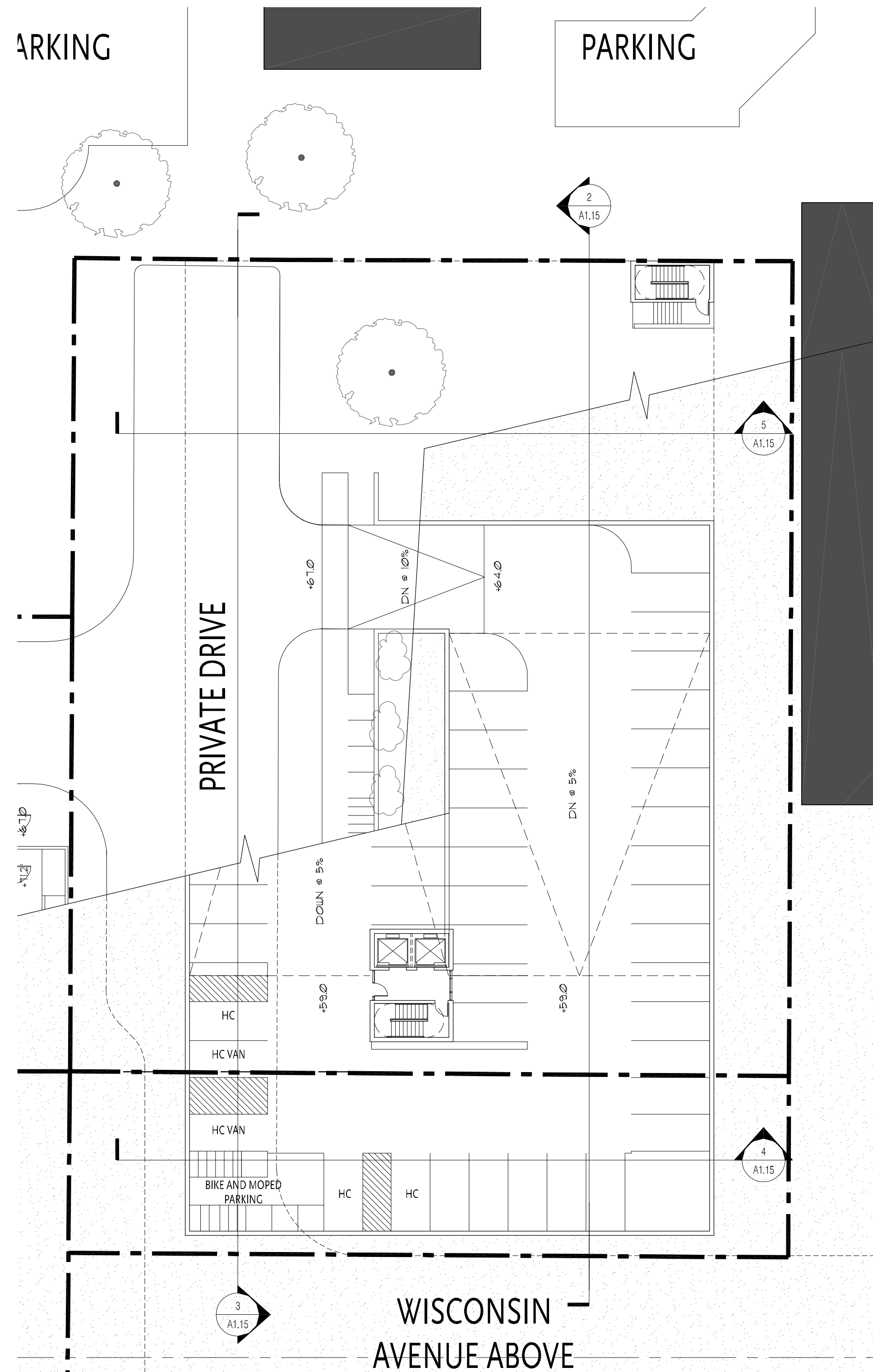
A1.15



4 Cross Section at Wisconsin Avenue Right of Way

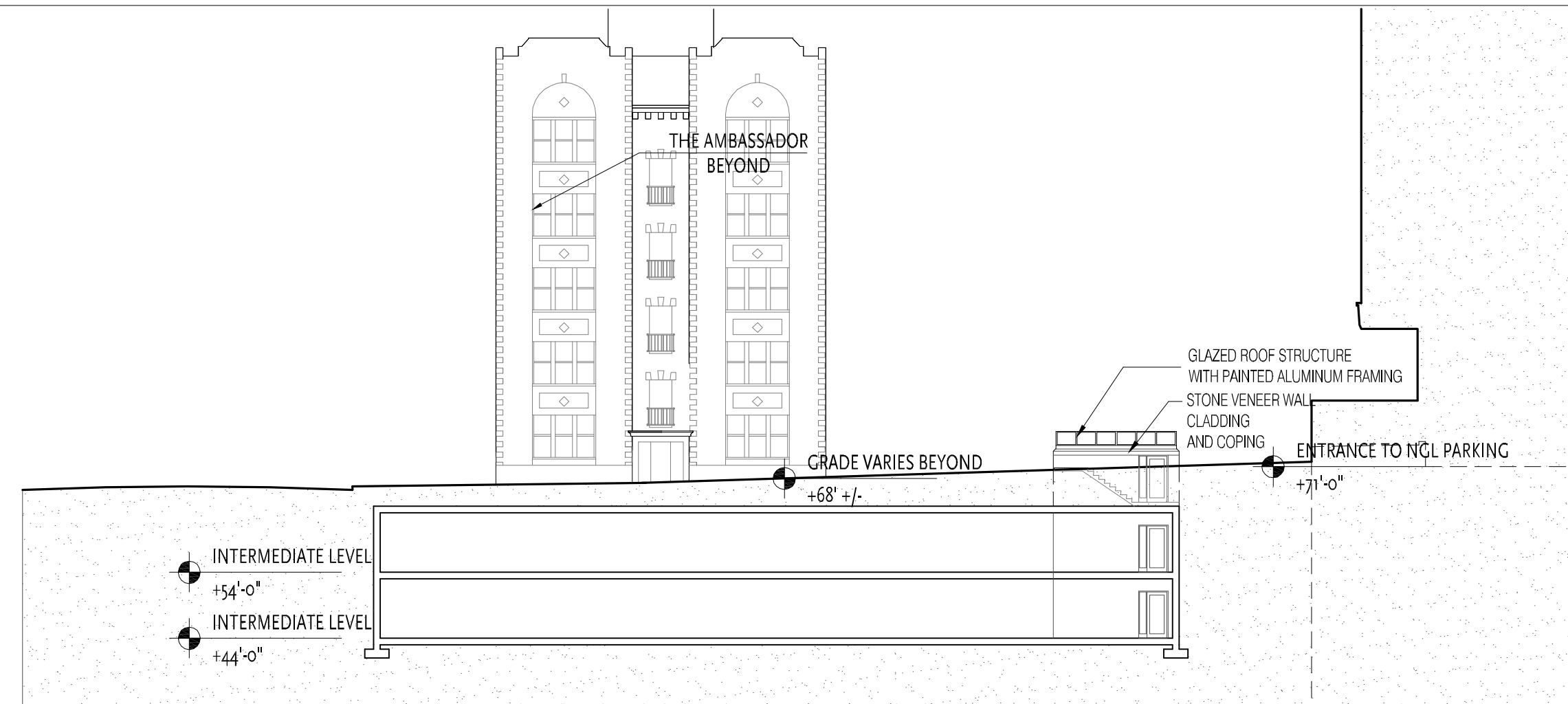
SCALE: 1"=20'-0"

PARKING



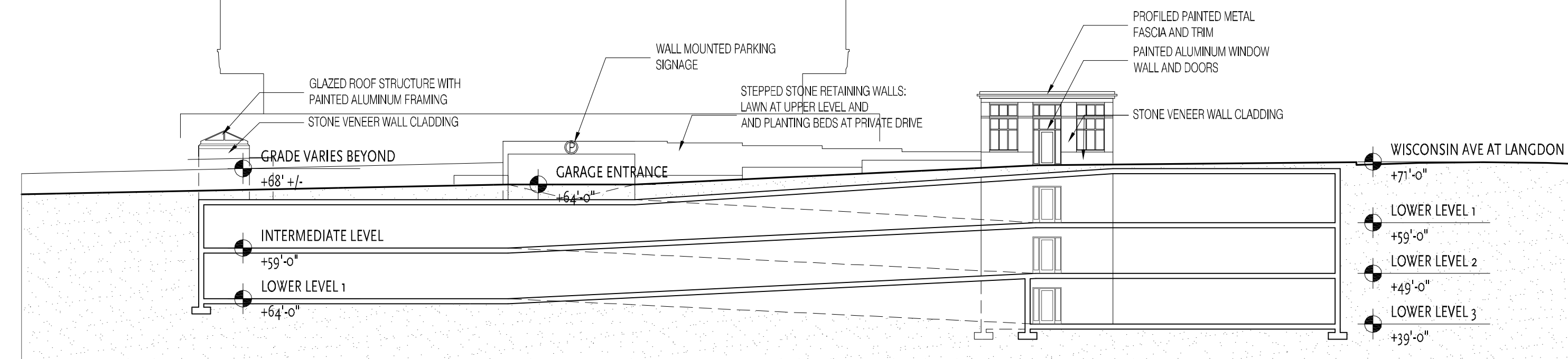
1 Parking Level Plan at Entrance Level

SCALE: 1"=20'-0"



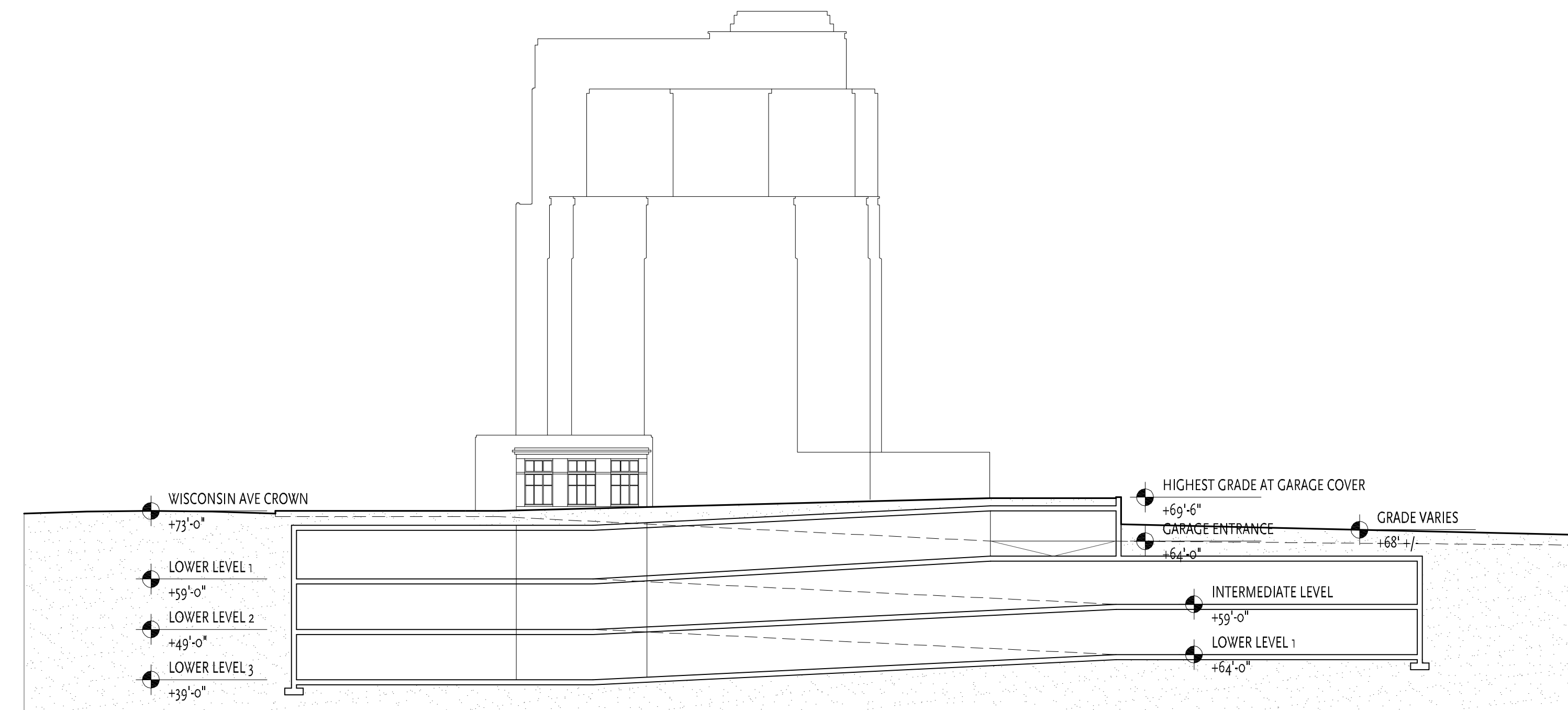
5 Parking Level Plan at Lower Level 3

SCALE: 1"=20'-0"



3 Cross Section Facing NGL Building

SCALE: 1"=20'-0"



2 Cross Section facing New Edgewater Hotel

SCALE: 1"=20'-0"

