

LANDMARKS COMMISSION APPLICATION

LC

Complete all sections of this application, making sure to note the requirements on the accompanying checklist (reverse).

If you need an interpreter, translator, materials in alternate formats or other accommodations to access these forms, please call (608) 266-4635

City of Madison
Planning Division
215 Martin Luther King Jr Blvd, Ste 017
PO Box 2985
Madison, WI 53701-2985
(608) 266-4635



1. LOCATION

Project Address: 938 Spaight St

Aldermanic District: 6

2. PROJECT

Project Title/Description: Exterior rehab

This is an application for: (check all that apply)

- New Construction/Alteration/Addition in a Local Historic District or Designated Landmark (specify)**:**
 - Mansion Hill Third Lake Ridge First Settlement
 - University Heights Marquette Bungalows Landmark
- Land Division/Combination in a Local Historic District or to Designated Landmark Site (specify)**:**
 - Mansion Hill Third Lake Ridge First Settlement
 - University Heights Marquette Bungalows Landmark
- Demolition**
- Alteration/Addition to a building adjacent to a Designated Landmark**
- Variance from the Historic Preservation Ordinance (Chapter 41)**
- Landmark Nomination/Rescission or Historic District Nomination/Amendment**
(Please contact the Historic Preservation Planner for specific Submission Requirements.)
- Other (specify):**

DPCED USE ONLY	Registrar #:
	DATE STAMP RECEIVED 11/19/21 1:25 pm
	Preliminary Zoning Review Zoning Staff Initial: Date: / /

3. APPLICANT

Applicant's Name: Bruce Bosben Company: Apex Real Estate Holdings LLC

Address: 1741 Commercial Ave Madison, WI 53704
Street City State Zip

Telephone: 608-255-3753 Email: bbosben@apexrents.com

Property Owner (if not applicant): _____

Address: _____
Street City State Zip

Property Owner's Signature: B. Bosben Date: 11-9-21
Digitally signed by 2292596d-4676-4626-9d0e-20a90ddec5c Date: 2021.11.09 09:29:32 -0600

NOTICE REGARDING LOBBYING ORDINANCE: If you are seeking approval of a development that has over 40,000 square feet of non-residential space, or a residential development of over 10 dwelling units, or if you are seeking assistance from the City with a value of \$10,000 (including grants, loans, TIF or similar assistance), then you likely are subject to Madison's lobbying ordinance (Sec. 2.40, MGO). You are required to register and report your lobbying. Please consult the City Clerk's Office for more information. Failure to comply with the lobbying ordinance may result in fines.

4. APPLICATION SUBMISSION REQUIREMENTS (see checklist on reverse)

All applications must be filed by 12:00 pm on the submission date with the Preservation Planner. Applications submitted after the submission date or incomplete applications will be postponed to the next scheduled filing time. Submission deadlines can be viewed here: https://www.cityofmadison.com/dpced/planning/documents/LC_Meeting_Schedule_Dates.pdf

PROJECT DESCRIPTION FOR PROPOSED RENOVATION AND REPAIR AT 938 SPAIGHT ST . MADISON WI:

PREPARED FOR: Apex Investment Group VII LLC
1741 Commercial Ave.
Madison WI 53704

PREPARED BY: Aaron Kaleas, Registered Architect WI #12801-5
AARON THOMAS FABRICATIONS LLC
8792 Spring Valley Dr.
Black Earth WI 53515
affabricationsllc@gmail.com
608-219-0190



Dear Landmarks Commission,

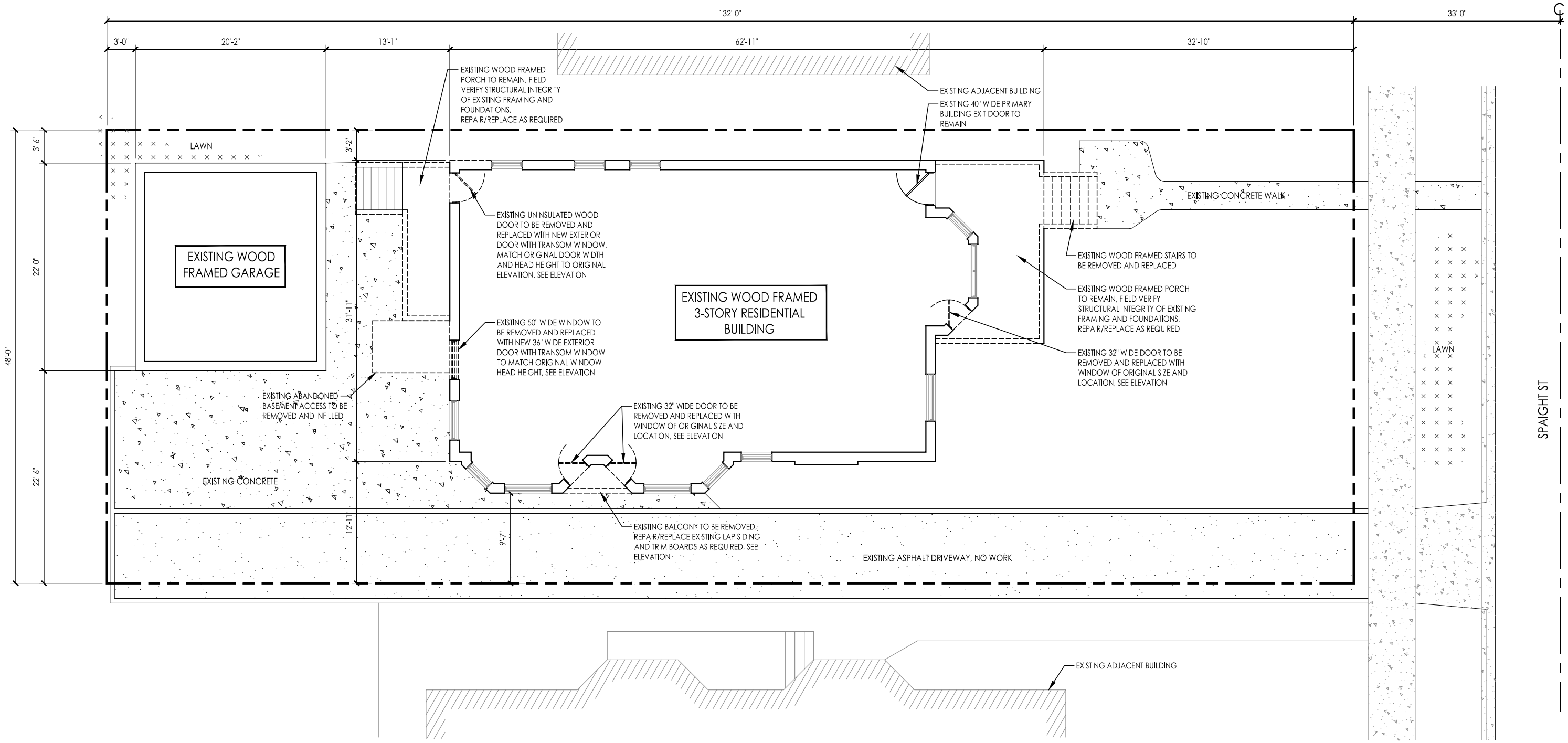
The 1902 Fauerbach house located at 938 Spaight St, Madison WI, is proposed to be renovated on the exterior to return to its original look and detailing from the early 1900's. The restoration of the exterior will also complement an ongoing first floor interior update.

The largest proposed exterior change involves returning the front porch to the original size. The original size of the porch is shown on the 1908 Sanborn Map and through visual evidence exposed after removal of the exterior shingles that were installed some time prior to 1978. Much of the original detailing has been revealed and will be recreated. In areas where clear visual evidence is not available, additional guidance has come from other existing examples that the architect, Lew Porter, had completed for the Fauerbach family. Also prior to 1978, some of the original windows were replaced with doors. There are three locations on the first floor, one on the front of the building and two on the driveway side, where the existing doors will be removed and a new window of original size will be installed. The small balcony on the driveway side will also be removed. On the rear of the building, an existing window will be removed and replaced with a new door and transom to match the original window head height. At the new exterior door, the existing fire escape will be extended. Also on the rear of the building, an existing un-insolated wood door will be removed and replaced with a new exterior door and transom. The existing wood lap siding, trim boards, and detailing is to be repaired or replaced and refinished on the entire building.

Additionally, we would like to remove the existing metal fire escape from the front of the building and raze the garage at the rear of the lot. The fire escape work can not be performed until the third floor is reconfigured to allow for access to the rear fire escape.

Sincerely,

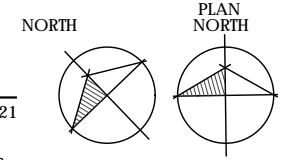
Aaron Kaleas
Architect



A1 EXISTING/DEMOLITION SITE PLAN

SCALE: 3/32" = 1' - 0" 11.10.21

NOTES:
 1. ALL SITE INFORMATION AND DIMENSIONS FROM DOCUMENT PREPARED BY LICENSED LAND SURVEYOR DATED MAY 21 2007.





1 PROPOSED EAST ELEVATION
 A3 SCALE: 3/32" = 1' - 0" 11.10.21

NEW DOUBLE HUNG WOOD WINDOW IN EXISTING OPENING, MATCH EXISTING ADJACENT WINDOW STYLE, FINISH, AND HEAD AND SILL HEIGHTS



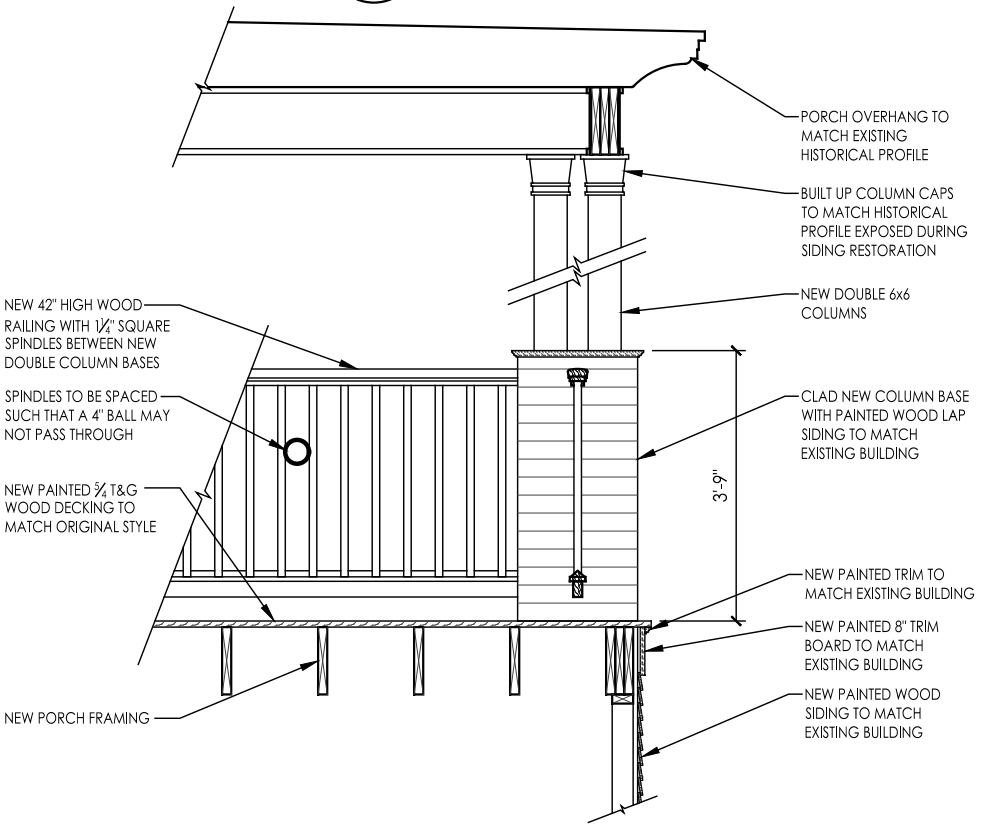
2 PROPOSED SOUTH ELEVATION
 A3 SCALE: 3/32" = 1' - 0" 11.10.21

REPAIR AND REFINISH EXISTING WOOD LAP SIDING
 EXISTING FRONT PORCH TO BE RETURNED TO ORIGINAL SIZE
 NEW DOUBLE HUNG WOOD WINDOW IN EXISTING OPENING, MATCH EXISTING ADJACENT WINDOW STYLE, FINISH, AND HEAD AND SILL HEIGHTS
 NEW PORCH STAIRS



3 PROPOSED WEST ELEVATION
 A3 SCALE: 3/32" = 1' - 0" 11.10.21

NEW 36" WIDE EXTERIOR DOOR WITH TRANSOM WINDOW TO MATCH ORIGINAL WINDOW HEAD HEIGHT
 EXTEND EXISTING FIRE ESCAPE FOR NEW EXTERIOR DOOR LOCATION



NEW 42" HIGH WOOD RAILING WITH 1/2" SQUARE SPINDLES BETWEEN NEW DOUBLE COLUMN BASES
 SPINDLES TO BE SPACED SUCH THAT A 4" BALL MAY NOT PASS THROUGH
 NEW PAINTED 3/4" T&G WOOD DECKING TO MATCH ORIGINAL STYLE
 NEW PORCH FRAMING

PORCH OVERHANG TO MATCH EXISTING HISTORICAL PROFILE
 BUILT UP COLUMN CAPS TO MATCH HISTORICAL PROFILE EXPOSED DURING SIDING RESTORATION
 NEW DOUBLE 6x6 COLUMNS
 CLAD NEW COLUMN BASE WITH PAINTED WOOD LAP SIDING TO MATCH EXISTING BUILDING
 NEW PAINTED TRIM TO MATCH EXISTING BUILDING
 NEW PAINTED 8" TRIM BOARD TO MATCH EXISTING BUILDING
 NEW PAINTED WOOD SIDING TO MATCH EXISTING BUILDING

NEW PAINTED 3/4" RAIL CAP WITH EASED TOP EDGE
 NEW 42" HIGH PAINTED WOOD RAILING WITH 1/2" SQUARE SPINDLES BETWEEN NEW DOUBLE COLUMN BASES
 NEW PAINTED 3/4" T&G WOOD DECKING TO MATCH ORIGINAL STYLE
 NEW PAINTED TRIM TO MATCH EXISTING BUILDING
 NEW PAINTED 8" TRIM BOARD TO MATCH EXISTING BUILDING
 NEW PAINTED WOOD SIDING TO MATCH EXISTING BUILDING
 EXISTING DECK STRUCTURE TO REMAIN

5 SECTION AT NEW FRONT PORCH RAILING
 A3 SCALE: 1/2" = 1' - 0"

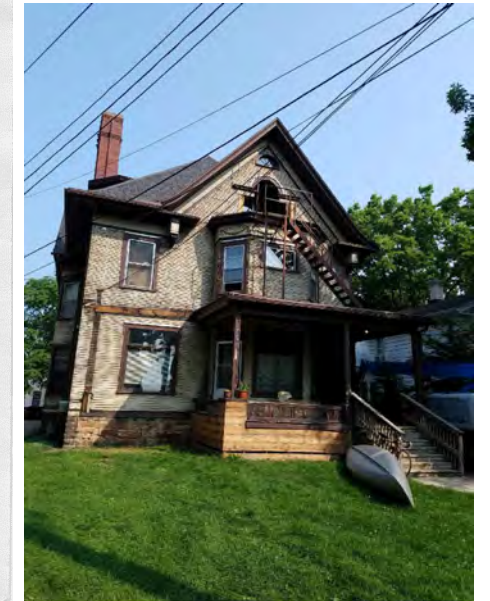
4 SECTION AT NEW FRONT PORCH
 A3 SCALE: 1/2" = 1' - 0"



A4 PROPOSED SOUTH EAST PERSPECTIVE
11.10.21



A5 PROPOSED STREET VIEW
11.10.21



A6 EXISTING AND HISTORIC PHOTOS
11.10.21

WOODWRIGHT[®] DOUBLE-HUNG FULL-FRAME WINDOWS

400 Series
Woodwright[®] Double-Hung
Full-Frame Windows

SECTION REFERENCE

Tables of Sizes	50-56
Specifications	54-61
Custom Sizing	62
Grille Patterns	63
Window Details	63-64
Joining Details	65
Combination Designs	181
Product Performance	194

CUSTOM SIZING

in 1/8" (3) increments



Dimensions in parentheses are in millimeters.

WOODWRIGHT® DOUBLE-HUNG FULL-FRAME WINDOWS

FEATURES

Frame

A Perma-Shield® exterior cladding protects the frame – beautifully. Best of all, it's low maintenance and never needs painting.*

B For exceptional long-lasting performance, sill members are constructed with a wood core and a Fibrex® material exterior.

C Natural wood stops are available in pine, oak, maple and prefinished white. Wood jamb liners add beauty and authenticity to the window interior.

D A factory-applied rigid vinyl flange on the head, sill and sides of the outer frame helps secure the unit to the structure.

E Multiple weatherstrip systems help provide a barrier against wind, rain and dust. The combination of spring tension vinyl, rigid vinyl and flexible bulb weatherstrip is efficient and effective.

F For units with white exterior color, exterior jamb liner is white. For all other units, the exterior jamb liner is gray.

Sash

G Balancers in the sash enable contractors to screw through the jamb during installation without interfering with the window's operation.

Wood Jamb Liner



H Natural wood sash interior with classic chamfer detailing. Available in pine, oak, maple or prefinished white.

I Low-maintenance sash exterior provides long-lasting protection and performance. Sash exteriors on most units include Fibrex material.

J Sash joints simulate the look of traditional mortise-and-tenon construction inside and out.

Glass

K Silicone bed glazing provides superior weathertightness and durability.



L High-Performance glass options include:

- Low-E4® glass
- Low-E4 HeatLock® glass
- Low-E4 Sun glass
- Low-E4 SmartSun™ glass
- Low-E4 SmartSun HeatLock glass

Tempered glass and other glass options are available. Contact your Andersen supplier.

A removable translucent film helps shield the glass from damage during delivery and construction and simplifies finishing at the jobsite.

Patterned Glass

Patterned glass options are available. See page 12 for more details.

Hardware



Standard lock and keeper design provides an easy tilt-to-clean feature integrated into the lock.

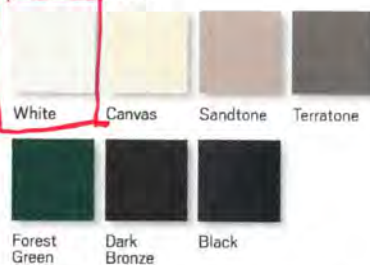


Performance Grade (PG) Upgrade

Performance upgrades are available for select sizes allowing these units to achieve higher performance ratings. Performance Grade (PG) Ratings are more comprehensive than Design Pressure (DP) Ratings for measuring product performance. Use of this option will subtract 3/8" (16) from clear opening height. Contact your Andersen supplier for availability. For up-to-date performance information of individual products, visit andersenwindows.com.

Visit andersenwindows.com/coastal for more information on Stormwatch Protection.

EXTERIOR

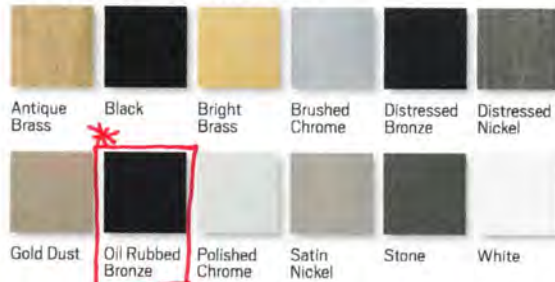


INTERIOR



Naturally occurring variations in grain, color and texture of wood make each window one of a kind. All wood interiors are unfinished unless prefinished white is specified.

HARDWARE FINISHES



Distressed bronze and oil rubbed bronze are "living" finishes that will change with time and use.

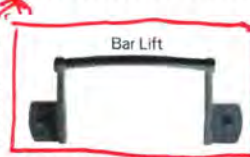
DOUBLE-HUNG HARDWARE

STANDARD



Antique Brass | **Black** | Bright Brass
Brushed Chrome | Distressed Bronze
Distressed Nickel | Gold Dust | Oil Rubbed Bronze
Polished Chrome | Satin Nickel | Stone | White

OPTIONAL DOUBLE-HUNG HARDWARE**



TRADITIONAL



Antique Brass | Black | Bright Brass | Brushed Chrome | Distressed Bronze | Distressed Nickel
Gold Dust | **Oil Rubbed Bronze** | Polished Chrome | Satin Nickel | Stone | White

CLASSIC SERIES™



Stone | White

CONTEMPORARY



ESTATE™



Antique Brass | Black | Bright Brass
Brushed Chrome | Distressed Bronze
Distressed Nickel | Gold Dust
Oil Rubbed Bronze | Polished Chrome
Satin Nickel | Stone | White

Antique Brass | Bright Brass
Brushed Chrome | Distressed Bronze
Distressed Nickel | Oil Rubbed Bronze
Polished Chrome | **Satin Nickel**

Bold name denotes finish shown.

* Visit andersenwindows.com/warranty for details.

** Hardware sold separately.

Dimensions in parentheses are in millimeters.

Printing limitations prevent exact replication of colors and finishes. See your Andersen supplier for actual color and finish samples.

Shapes

Woodwright® windows are available in the following shapes.



Double-Hung



Arch Double-Hung



Unequal Leg Arch Double-Hung



Springline™ Single-Hung

Sash Options*



Cottage



Reverse Cottage

For more information about **glass, patterned glass, grilles and TruScene insect screens**, see pages 12-14.

For more information about **combination designs, product performance, installation instructions and accessories**, see pages 181-211 or visit andersenwindows.com.

ACCESSORIES Sold Separately

Frame

Extension Jamb



Standard jamb depth is 4 1/2" (114). Extension jambs are available in unfinished pine or prefinished white. Some sizes may be veneered.

Factory-applied and non-applied interior extension jambs are available in 1/16" (1.5) increments between 5 1/4" (133) and 7 1/8" (181). Extension jambs can be factory-applied to either three sides (stool and apron application) or four sides (picture frame casing).

Pine Stool



A clear pine stool is available and ready for finishing. The Woodwright stool is available in 4 9/16" (116) for use in wall depths up to 5 1/4" (133), and 6 1/16" (167) for use in wall depths up to 7 1/8" (181). Works with 2 1/4" (57) and 2 1/2" (64) wide casings. Shown on 400 Series tilt-wash double-hung window.

Hardware

Window Opening Control Device Kit



A Window Opening Control Device Kit is available, which limits sash travel to less than 4" (102) when the window is first opened. Available factory applied or field applied in stone and white.

Security Sensors

Open/Closed Sensors

Wireless open/closed sensors are available in four colors. See page 15 for details.

Storm/Insect Screen Combination Unit**



A self-storing storm window combined with an insect screen provides greater energy efficiency, while allowing ventilation when needed.

Constructed with an aluminum frame, single-pane upper and lower glass panels and charcoal powder-coated aluminum screen mesh. Available in white, Sandtone and Terratone to match product exteriors. Canvas, forest green, dark bronze and black available by special order.

Combination units can improve Sound Transmission Class (STC) and Outdoor Indoor Transmission Class (OITC) ratings. Ideal for projects near airports, busy roadways or other noisy environments. For example, adding a combination unit to a 400 Series tilt-wash double-hung (3862) unit with Low-E4® glass will improve its STC rating from 26 to 32. Contact your Andersen supplier for additional STC and OITC rating information.

Insect Screens

Insect Screen Frames



Choose full insect screen or half insect screen. Half insect screen (shown above) allows ventilation without affecting the view through the upper sash. Frames are available in colors to match product exteriors.

TruScene® Insect Screen

Exclusive Andersen TruScene insect screens provide over 50% more clarity than our conventional insect screens for a beautiful unobstructed view. They allow more fresh air and sunlight in, while doing a better job of keeping out small insects.

Conventional Insect Screen

Conventional insect screens have charcoal powder-coated aluminum screen mesh.

Grilles

Grilles are available in a variety of configurations and widths. For double-hung grille patterns, see page 62.

Exterior Trim

This product is available with Andersen exterior trim. See pages 175-180 for details.

CAUTION:

- Painting and staining may cause damage to rigid vinyl.
- Do not paint 400 Series windows with white, canvas, Sandtone, forest green, dark bronze or black exterior colors.
- Andersen does not warrant the adhesion or performance of homeowner-applied paint over vinyl or other factory-coated surfaces.
- 400 Series windows in Terratone color may be painted any color lighter than Terratone color using quality oil-based or latex paint.
- For vinyl painting instructions and preparation, contact your Andersen supplier.
- Do not paint weatherstrip.
- Creosote-based stains should not come in contact with Andersen products.
- Abrasive cleaners or solutions containing corrosive solvents should not be used on Andersen products.

400 Series Woodwright® Double-Hung Full-Frame Windows

* Shown on 400 Series tilt-wash double-hung windows.
 ** Do not add combination units to windows with Low-E4 Sun glass, unless window glass is tempered. Combination units may also reduce the overall clear operable area of the window. See your local code official for egress requirements in your area. Dimensions in parentheses are in millimeters.

FRENCHWOOD[®] HINGED IN SWING PATIO DOORS

400 Series
Frenchwood[®] Hinged
Inswing Patio Doors

SECTION REFERENCE

Table of Sizes.....	152-153
Specifications	154
Custom Sizing.....	155
Grille Patterns.....	155
Door Details.....	156-157
Joining Details.....	158
Combination Designs.....	181
Product Performance.....	194

CUSTOM SIZING

in 1/8" (3) increments



Dimensions in parentheses are in millimeters.

FRENCHWOOD® HINGED INSWING PATIO DOORS

FEATURES

Frame

A The sill is made with three-piece construction. The subsill is made of Fibrex® material, and the sill step is solid oak. The exterior sill member is made of extruded aluminum with an attractive wear-resistant, heat-baked finish in a neutral color.

B All basic exterior frame members are fiberglass reinforced composite, which maintains an attractive appearance while minimizing maintenance.

C The exterior frame members are attached to a water-repellent preservative-treated wood subframe for long-lasting* protection and performance. The subframe is grooved to accept extension jamba.

Panel

D The exterior of the wood door panel is protected with a long-lasting** urethane base finish in white, Sandtone, Terratone or forest green.

E Panel interior surfaces are unfinished pine veneer. Unfinished oak and maple veneers are available as options. Low-maintenance prefinished white interiors are also available.

Hinged inswing operating panels are left-hand active, right-hand active or two-panel active-passive jamb hinged.

F A factory-applied, one-piece compression-type rubber weatherstrip continues in one plane around the panel to provide maximum effectiveness against water and air infiltration. The corners of the weatherstrip are welded to eliminate gaps between the panel and the frame/sill shoulder.



Mortise-and-Tenon Joints



Mortise-and-tenon joints prevent panel sag and maintain smooth operation.

Adjustable Hinges

Adjustable hinges are standard on inswing patio doors and have ball-bearing pivots for smooth, frictionless movement. Features easy horizontal and vertical adjustment, plus quick-release feature for easy panel removal. This release feature is ideal for transporting large units up stairs or to other hard-to-reach areas.



Shown in gold dust finish.

Gold dust finish is standard on wood interior doors. For units with prefinished white interior, white is standard. Also available in finishes that coordinate with hardware.

Glass

G Panels are silicone bed glazed and finished with an interior wood stop.

H High-performance glass options include: Low-E4® tempered, Low-E4 HeatLock® tempered, Low-E4 Sun tempered, Low-E4 SmartSun™ tempered and Low-E4 SmartSun HeatLock tempered glass.

Additional glass options are available. Contact your Andersen supplier.

A removable translucent film helps shield the glass from damage during delivery and construction and simplifies finishing at the jobsite.

Patterned Glass

Patterned glass options are available. See page 12 for more details.

Hardware

Multi-Point Locking System



The multi-point locking system, with a hook bolt above and below the center dead bolt, provides a weathertight seal and enhanced security.

* EXTERIOR

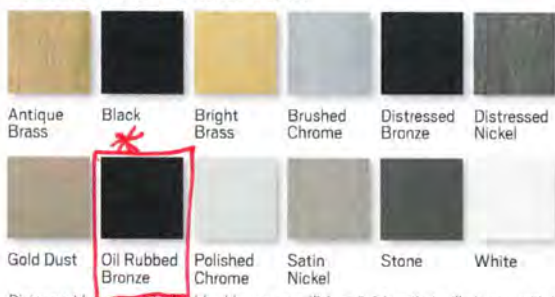


INTERIOR



Prefinished white interiors are only available on units with white exteriors. Naturally occurring variations in grain, color and texture of wood make each door one of a kind. All wood interiors are unfinished unless prefinished white is specified.

HARDWARE FINISHES



Distressed bronze and oil rubbed bronze are "living" finishes that will change with time and use.

HINGED PATIO DOOR HARDWARE OPTIONS** Bold name denotes finish shown. *



* Visit andersenwindows.com/warranty for details.
 ** Hardware sold separately.
 Dimensions in parentheses are in millimeters.
 "FSB" is a registered trademark of Franz Schneider Brakel GmbH & Co.

Mix-and-match interior and exterior style and finish options are available. Bright brass and satin nickel finishes feature a 10-year limited warranty. Tribeca and Albany hardware are zinc die cast with powder-coated durable finish. Other hardware is solid forged brass. Printing limitations prevent exact replication of colors and finishes. See your Andersen supplier for actual color and finish samples.

Blinds-Between-the-Glass



Blinds-between-the-glass are available for select hinged patio door sizes when ordered with Low-E4® tempered glass and a pine or prefinished white door interior and any of our four exterior colors. White 1/2" (13) aluminum slat blinds come mounted between two panes of insulated glass in a dust-free environment. Blinds are magnetically controlled and can be tilted, raised and lowered using low profile controls. Smooth, simple operation allows for customized light and privacy control. Available in 2768, 27611, 3168, 31611, 5068, 50611, 6068, 60611, 9068, 90611 door sizes.

CAUTION-

- Painting and staining may cause damage to rigid vinyl
- Do not paint 400 Series patio doors with white, canvas, Sandtone, forest green, dark bronze or black exterior colors.
- Andersen does not warrant the adhesion or performance of homeowner-applied paint over vinyl or other factory-coated surfaces.
- 400 Series patio doors in Terratone color may be painted any color lighter than Terratone color using quality oil-based or latex paint.
- For vinyl painting instructions and preparation, contact your Andersen supplier.
- Do not paint weatherstrip.
- Creosote-based stains should not come in contact with Andersen products.
- Abrasive cleaners or solutions containing corrosive solvents should not be used on Andersen products.

* Exterior extension jambs for hinged inswing patio doors must be applied before installing into opening.

** Visit andersenwindows.com/warranty for details.

Andersen patio doors are not intended for use as entrance doors.

Dimensions in parentheses are in millimeters.

"Delrin" is a registered trademark of E.I. du Pont de Nemours and Company.

For more information about **glass, patterned glass, art glass and grilles**, see pages 12-14.

For more information about **combination designs, product performance, installation instructions and accessories**, see pages 181-211 or visit andersenwindows.com.

ACCESSORIES Sold Separately

Frame

Interior Extension Jambs

Standard jamb depth is 4 9/16" (116). Pine, oak or maple veneer or prefinished white extension jambs are available in 1/16" (1.5) increments between 5 1/16" (129) and 7 1/8" (181). Interior extension jambs on inswing units will restrict the full opening of door.

Exterior Extension Jambs*

Exterior extension jamb system is available for the following wall thicknesses: 5 1/4" (133), 6 3/16" (167) and 7 9/16" (192). In walls over 4 1/2" (114), the exterior sill extender and exterior extension jamb system allow the unit to be installed flush to the interior, so the hinged doors will open flat against the interior wall. Colored-matched to the exterior of the finished unit, this system provides a low-maintenance, finished exterior appearance. An extended double-insect screen track is available for jamb-hinged doors that require gliding insect screens. Exterior extension jamb kits are available with or without the double-insect screen track.

Threshold



An oak or maple threshold is available for finishing the interior of the sill.

Sill Support



An aluminum sill support is designed to lock into a channel under the sill and tie back into the wall. This will offer support to the outermost sill section when needed. Available in neutral gray finish.

Ramped Sill Insert



Ramped sills provide smooth transition from interior to exterior. Shown with a Frenchwood® gliding patio door. It cannot be used with hinged or gliding insect screens. Check with local and federal officials to determine if product meets accessibility codes.

Hardware

Exterior Keyed Lock



A six-pin key cylinder lock is available in styles and finishes that coordinate with hardware. This lock allows the hinged patio door to be locked and unlocked from the exterior.

Handle Extension



Extends interior door handle an additional 1" (25) from the door interior panel to accommodate blinds or shades. Kit includes one handle extender and spindle. A second extender may be added to increase the length an additional 1" (25) to a 2" (51) total extension. Extenders are available in finishes that coordinate with hardware.

Strike Plate Extensions

Bright brass, antique brass, polished chrome, oil rubbed bronze, brushed chrome and satin nickel strike plate extensions are available for the following wall thicknesses: 5 1/4" (133), 6 3/16" (167), 7 1/8" (181) and 7 9/16" (192).

Construction Lock



This hardware can be used on all Andersen® hinged doors to help secure the structure during the construction phase of the project. It features an undersized escutcheon plate, which makes on-site finishing easier.

Panel Stop



This hinged door panel stop helps prevent wall damage when opening the inswing door. Available in finishes that coordinate with hardware.

Grilles

Grilles are available in a variety of configurations and widths. For patio door grille patterns, see page 155.

Insect Screens

All insect screens have a long-lasting™ fiberglass screen mesh with a charcoal finish and frames are color matched to the exterior of the door unless otherwise specified.

Gliding Insect Screen

Available for all two- and three-panel doors. Features Delrin® material injection molded bottom rollers with self-contained leveling adjusters. A double-insect screen track is required for two-panel active-passive or passive-active doors. Gliding insect screens are not available for 4' (1219) wide doors. Insect screens are shown on page 14.

Double-Insect Screen Track



An extended insect screen track is required for two-panel active-passive or passive-active hinged doors that use gliding insect screens.

Hinged Insect Screens

Available for single-panel hinged doors and two-panel active-passive or passive-active doors. Insect screens are shown on page 14.

Security Sensors

VeriLock® Sensors

VeriLock sensors are available in five colors. See page 15 for details.

Open/Closed Sensors

Wireless open/closed sensors are available in four colors. See page 15 for details.

Glass

Andersen Art Glass

Andersen art glass panels come in a variety of original patterns. See pages 173-174 for details on Andersen art glass. Visit andersenwindows.com/artglass for details and pattern information.

Sidelights & Transoms

Andersen Frenchwood patio door sidelights and transoms feature elegant lines that match our Frenchwood hinged patio doors. See pages 159-162 for details.

Exterior Trim

This product is available with Andersen exterior trim. See pages 175-180 for details.

400 Series
Frenchwood® Hinged
Inswing Patio Doors

FRENCHWOOD® HINGED INSWING PATIO DOORS

Table of Frenchwood® Hinged Inswing Patio Door Sizes

Scale 1/8" (3) = 1'-0" (305) – 1:96

Door Dimension	2'-0 1/2"			4'-0"		4'-0"											
	(620)			(1219)		(1219)											
Minimum Rough Opening	2'-1"			4'-1"		4'-1"											
	(634)			(1242)		(1242)											
Unobstructed Glass (single panel only)	13 1/4"			13 1/4"		13 1/4"											
	(336)			(336)		(336)											
3 heights																	
	<ol style="list-style-type: none"> 1 FWH2168S 2 FWH21611S 3 FWH2180S 			<ol style="list-style-type: none"> FWH4168APLR FWH41611APLR FWH4180APLR 		<ol style="list-style-type: none"> FWH4168PALR FWH41611PALR FWH4180PALR 											
Door Dimension	2'-6 1/8"			4'-11 1/4"		4'-11 1/4"		4'-11 1/4"									
	(765)			(1504)		(1504)		(1504)									
Minimum Rough Opening	2'-7"			5'-0"		5'-0"		5'-0"									
	(787)			(1524)		(1524)		(1524)									
Unobstructed Glass (single panel only)	18 7/8"			18 7/8"		18 7/8"		18 7/8"									
	(479)			(479)		(479)		(479)									
3 heights																	
	<ol style="list-style-type: none"> 1 FWH2768S 2 FWH27611S 3 FWH2780S 			<ol style="list-style-type: none"> FWH2768AR FWH27611AR FWH2780AR 		<ol style="list-style-type: none"> FWH2768AL FWH27611AL FWH2780AL 		<ol style="list-style-type: none"> FWH5068SS FWH50611SS FWH5080SS 		<ol style="list-style-type: none"> FWH5068ASR FWH50611ASR FWH5080ASR 		<ol style="list-style-type: none"> FWH5068SAL FWH50611SAL FWH5080SAL 		<ol style="list-style-type: none"> FWH5068APLR FWH50611APLR FWH5080APLR 		<ol style="list-style-type: none"> FWH5068PALR FWH50611PALR FWH5080PALR 	
Door Dimension	2'-8 1/8"			5'-3 1/4"		5'-3 1/4"		5'-3 1/4"									
	(816)			(1607)		(1607)		(1607)									
Minimum Rough Opening	2'-9"			5'-4"		5'-4"		5'-4"									
	(838)			(1626)		(1626)		(1626)									
Unobstructed Glass (single panel only)	20 7/8"			20 7/8"		20 7/8"		20 7/8"									
	(530)			(530)		(530)		(530)									
3 heights																	
	<ol style="list-style-type: none"> 1 FWH2968S 2 FWH29611S 3 FWH2980S 			<ol style="list-style-type: none"> FWH2968AR FWH29611AR FWH2980AR 		<ol style="list-style-type: none"> FWH2968AL FWH29611AL FWH2980AL 		<ol style="list-style-type: none"> FWH5468SS FWH54611SS FWH5480SS 		<ol style="list-style-type: none"> FWH5468ASR FWH54611ASR FWH5480ASR 		<ol style="list-style-type: none"> FWH5468SAL FWH54611SAL FWH5480SAL 		<ol style="list-style-type: none"> FWH5468APLR FWH54611APLR FWH5480APLR 		<ol style="list-style-type: none"> FWH5468PALR FWH54611PALR FWH5480PALR 	
Door Dimension	3'-0 1/8"			5'-11 1/4"		5'-11 1/4"		5'-11 1/4"									
	(918)			(1810)		(1810)		(1810)									
Minimum Rough Opening	3'-1"			6'-0"		6'-0"		6'-0"									
	(940)			(1829)		(1829)		(1829)									
Unobstructed Glass (single panel only)	24 7/8"			24 7/8"		24 7/8"		24 7/8"									
	(632)			(632)		(632)		(632)									
3 heights																	
	<ol style="list-style-type: none"> 1 FWH3168S 2 FWH31611S 3 FWH3180S 			<ol style="list-style-type: none"> FWH3168AR FWH31611AR FWH3180AR 		<ol style="list-style-type: none"> FWH3168AL FWH31611AL FWH3180AL 		<ol style="list-style-type: none"> FWH6068SS FWH60611SS FWH6080SS 		<ol style="list-style-type: none"> FWH6068ASR FWH60611ASR FWH6080ASR 		<ol style="list-style-type: none"> FWH6068SAL FWH60611SAL FWH6080SAL 		<ol style="list-style-type: none"> FWH6068APLR FWH60611APLR FWH6080APLR 		<ol style="list-style-type: none"> FWH6068PALR FWH60611PALR FWH6080PALR 	



Custom-size doors are available in 1/8" (3) increments. See page 155 for custom sizes and specifications.

Stationary (S) doors can be used as an individual unit or as a sidelight. In addition to venting door panels shown in table, other standard configurations are available for two- and three-panel doors.

Grille patterns shown on page 155.

* "Door Dimension" always refers to outside frame to frame dimension.

** "Minimum Rough Opening" dimensions may need to be increased to allow for use of building wraps, flashing, sill panning, brackets, fasteners or other items. See pages 210-211 for more details.

• Dimensions in parentheses are in millimeters.

WOODWRIGHT® DOUBLE-HUNG FULL-FRAME WINDOWS

Table of Woodwright® Transom Window Sizes

Scale 1/8" (3) = 1'-0" (305) – 1:96

Window Dimension	1'-9 5/8"	2'-1 5/8"	2'-5 5/8"	2'-7 5/8"	2'-9 5/8"	2'-11 5/8"	3'-1 5/8"	3'-5 5/8"	3'-9 5/8"	3'-11 5/8"
	(549)	(651)	(752)	(803)	(854)	(905)	(956)	(1057)	(1159)	(1202)
Minimum Rough Opening	1'-10 1/8"	2'-2 1/8"	2'-6 1/8"	2'-8 1/8"	2'-10 1/8"	3'-0 1/8"	3'-2 1/8"	3'-6 1/8"	3'-10 1/8"	3'-11 7/8"
	(562)	(664)	(765)	(816)	(867)	(917)	(968)	(1070)	(1172)	(1215)
Unobstructed Glass	15 5/8"	19 5/8"	23 5/8"	25 5/8"	27 5/8"	29 5/8"	31 5/8"	35 5/8"	39 5/8"	41 1/4"
	(397)	(498)	(600)	(651)	(702)	(752)	(803)	(905)	(1006)	(1048)

CUSTOM WIDTHS – 12" to 75 5/16"

1'-0"	1'-0 1/2"	1'-7 5/16"	1'-7 7/8"	1'-9 5/16"	1'-9 7/8"	2'-1 5/16"	2'-1 7/8"	2'-3 5/16"	2'-3 7/8"	2'-5 5/16"	2'-5 7/8"	2'-9 5/16"	2'-9 7/8"	3'-3 5/16"
(305)	(318)	(491)	(504)	(541)	(555)	(643)	(657)	(694)	(707)	(745)	(758)	(846)	(860)	(999)
1'-0 1/2"	1'-0 1/2"	1'-7 5/16"	1'-7 7/8"	1'-9 5/16"	1'-9 7/8"	2'-1 5/16"	2'-1 7/8"	2'-3 5/16"	2'-3 7/8"	2'-5 5/16"	2'-5 7/8"	2'-9 5/16"	2'-9 7/8"	3'-3 5/16"
(305)	(318)	(491)	(504)	(541)	(555)	(643)	(657)	(694)	(707)	(745)	(758)	(846)	(860)	(999)
1'-7 5/16"	1'-7 7/8"	1'-9 5/16"	1'-9 7/8"	2'-1 5/16"	2'-1 7/8"	2'-3 5/16"	2'-3 7/8"	2'-5 5/16"	2'-5 7/8"	2'-9 5/16"	2'-9 7/8"	3'-3 5/16"	3'-3 7/8"	3'-3 7/8"
(491)	(504)	(541)	(555)	(643)	(657)	(694)	(707)	(745)	(758)	(846)	(860)	(999)	(1012)	(867)
1'-9 5/16"	1'-9 7/8"	2'-1 5/16"	2'-1 7/8"	2'-3 5/16"	2'-3 7/8"	2'-5 5/16"	2'-5 7/8"	2'-9 5/16"	2'-9 7/8"	3'-3 5/16"	3'-3 7/8"	3'-3 7/8"	3'-3 7/8"	3'-3 7/8"
(541)	(555)	(643)	(657)	(694)	(707)	(745)	(758)	(846)	(860)	(999)	(1012)	(867)	(1012)	(867)
1'-9 7/8"	2'-1 5/16"	2'-1 7/8"	2'-3 5/16"	2'-3 7/8"	2'-5 5/16"	2'-5 7/8"	2'-9 5/16"	2'-9 7/8"	3'-3 5/16"	3'-3 7/8"	3'-3 7/8"	3'-3 7/8"	3'-3 7/8"	3'-3 7/8"
(555)	(643)	(657)	(694)	(707)	(745)	(758)	(846)	(860)	(999)	(1012)	(867)	(1012)	(867)	(867)
14 1/8"	14 1/8"	20 1/8"	20 1/8"	22 1/8"	22 1/8"	24 1/8"	24 1/8"	28 1/8"	28 1/8"	34 1/8"	34 1/8"	34 1/8"	34 1/8"	34 1/8"
(359)	(359)	(410)	(410)	(562)	(562)	(613)	(613)	(714)	(714)	(867)	(867)	(867)	(867)	(867)
CUSTOM HEIGHTS – 12" to 39 5/16"														
WTR1810	WTR2010	WTR2410	WTR2610	WTR2810	WTR21010	WTR3010	WTR3410	WTR3810	WTR31010					
WTR1815	WTR2015	WTR2415	WTR2615	WTR2815	WTR21015	WTR3015	WTR3415	WTR3815	WTR31015					
WTR1817	WTR2017	WTR2417	WTR2617	WTR2817	WTR21017	WTR3017	WTR3417	WTR3817	WTR31017					
WTR18111	WTR20111	WTR24111	WTR26111	WTR28111	WTR210111	WTR30111	WTR34111	WTR38111	WTR310111					
WTR1821	WTR2021	WTR2421	WTR2621	WTR2821	WTR21021	WTR3021	WTR3421	WTR3821	WTR31021					
WTR1823	WTR2023	WTR2423	WTR2623	WTR2823	WTR21023	WTR3023	WTR3423	WTR3823	WTR31023					
WTR1827	WTR2027	WTR2427	WTR2627	WTR2827	WTR21027	WTR3027	WTR3427	WTR3827	WTR31027					
WTR1831	WTR2031	WTR2431	WTR2631	WTR2831	WTR21031	WTR3031	WTR3431	WTR3831	WTR31031					

* Window Dimension* always refers to outside frame to frame dimension.
 * Minimum Rough Opening* dimensions may need to be increased to allow for use of building wraps, flashing, sill panning, brackets, fasteners or other items. See pages 210-211 for more details.
 * Dimensions in parentheses are in millimeters.

Woodwright® Transom Window Area Specifications

Window Number	Glass Area Sq. Ft./ (m ²)	Overall Window Area Sq. Ft./ (m ²)
WTR1810	0.74 (0.07)	1.80 (0.17)
WTR1815	1.53 (0.14)	2.90 (0.27)
WTR1817	1.75 (0.16)	3.20 (0.30)
WTR18111	2.18 (0.20)	3.80 (0.35)
WTR1821	2.40 (0.22)	4.10 (0.38)
WTR1823	2.62 (0.24)	4.40 (0.41)
WTR1827	3.05 (0.28)	5.00 (0.46)
WTR1831	3.70 (0.34)	5.90 (0.55)
WTR2010	0.93 (0.09)	2.14 (0.20)
WTR2015	1.93 (0.18)	3.44 (0.32)
WTR2017	2.20 (0.20)	3.79 (0.35)
WTR20111	2.74 (0.25)	4.50 (0.42)
WTR2021	3.02 (0.28)	4.86 (0.45)
WTR2023	3.29 (0.31)	5.22 (0.48)
WTR2027	3.83 (0.36)	5.93 (0.55)
WTR2031	4.65 (0.43)	7.00 (0.65)
WTR2410	1.12 (0.10)	2.47 (0.23)
WTR2415	2.32 (0.22)	3.97 (0.37)
WTR2417	2.65 (0.25)	4.38 (0.41)
WTR24111	3.30 (0.31)	5.21 (0.48)

Window Number	Glass Area Sq. Ft./ (m ²)	Overall Window Area Sq. Ft./ (m ²)
WTR2421	3.63 (0.34)	5.62 (0.52)
WTR2423	3.96 (0.37)	6.03 (0.56)
WTR2427	4.61 (0.43)	6.85 (0.64)
WTR2431	5.60 (0.52)	8.09 (0.75)
WTR2610	1.21 (0.11)	2.64 (0.24)
WTR2615	2.51 (0.23)	4.24 (0.39)
WTR2617	2.87 (0.27)	4.68 (0.43)
WTR26111	3.58 (0.33)	5.56 (0.52)
WTR2621	3.94 (0.37)	6.00 (0.56)
WTR2623	4.29 (0.40)	6.44 (0.60)
WTR2627	5.00 (0.46)	7.32 (0.68)
WTR2631	6.07 (0.56)	8.63 (0.80)
WTR2810	1.31 (0.12)	2.80 (0.26)
WTR2815	2.71 (0.25)	4.51 (0.42)
WTR2817	3.09 (0.29)	4.98 (0.46)
WTR28111	3.86 (0.36)	5.91 (0.55)
WTR2821	4.24 (0.39)	6.38 (0.59)
WTR2823	4.63 (0.43)	6.84 (0.64)
WTR2827	5.40 (0.50)	7.78 (0.72)
WTR2831	6.55 (0.61)	9.18 (0.85)

Window Number	Glass Area Sq. Ft./ (m ²)	Overall Window Area Sq. Ft./ (m ²)
WTR21010	1.40 (0.13)	2.97 (0.28)
WTR21015	2.91 (0.27)	4.78 (0.44)
WTR21017	3.32 (0.31)	5.27 (0.49)
WTR210111	4.14 (0.38)	6.26 (0.58)
WTR21021	4.55 (0.42)	6.76 (0.63)
WTR21023	4.96 (0.46)	7.25 (0.67)
WTR21027	5.79 (0.54)	8.24 (0.77)
WTR21031	7.02 (0.65)	9.73 (0.90)
WTR3010	1.50 (0.14)	3.14 (0.29)
WTR3015	3.10 (0.29)	5.05 (0.47)
WTR3017	3.54 (0.33)	5.57 (0.52)
WTR30111	4.42 (0.41)	6.61 (0.61)
WTR3021	4.86 (0.45)	7.14 (0.66)
WTR3023	5.30 (0.49)	7.66 (0.71)
WTR3027	6.18 (0.57)	8.70 (0.81)
WTR3031	7.49 (0.70)	10.27 (0.95)
WTR3410	1.69 (0.16)	3.47 (0.32)
WTR3415	3.49 (0.32)	5.58 (0.52)

* Dimensions in parentheses are in square meters.

continued on next page





1930

