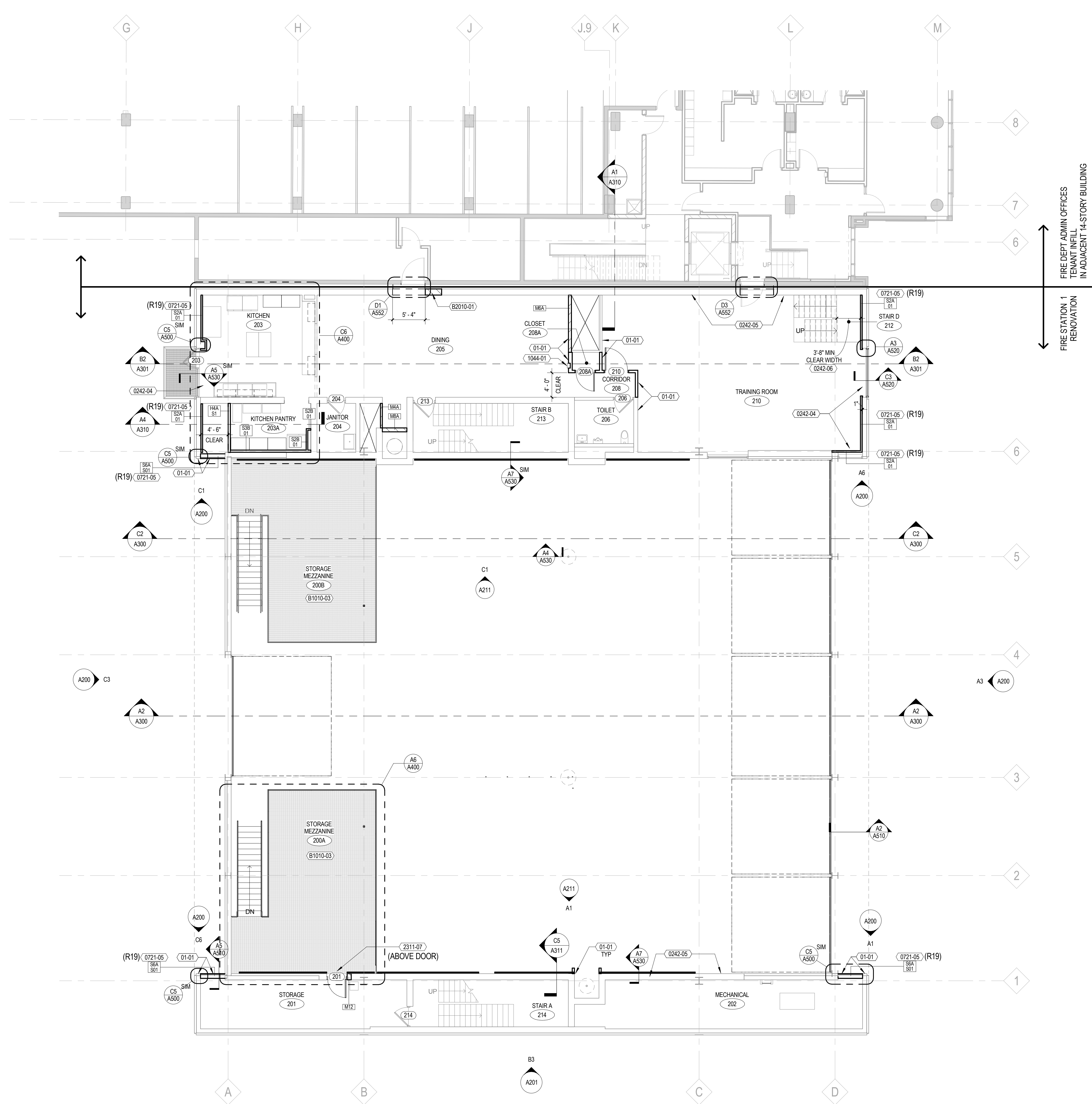


1 2 3 4 5 6 7

E
D
C
B
A



A2 STATION 1 SECOND FLOOR PLAN
1/8" = 1'-0"

KEYNOTES PER SHEET	
01-01	ALIGN
0242-04	PATCH FLOOR OPENING
0242-05	PATCH WALL OPENING
0242-06	VERIFY CLEAR WIDTH AT HANDRAIL AND TOEKICK. RECONFIGURE IF NECESSARY TO PROVIDE REQUIRED CLEAR WIDTH
0721-05	SPRAY-APPLIED POLYURETHANE FOAM INSULATION
1044-01	SEMI-RECESSED FIRE EXTINGUISHER CABINET
2311-07	COORDINATE NEW DUCT PENETRATION WITH MECHANICAL CONTRACTOR
B1010-03	SUSPEND STEEL MEZZANINE FROM STRUCTURE ABOVE
B2010-01	INFILL OPENING TO MATCH EXISTING

CLEANING GENERAL NOTE

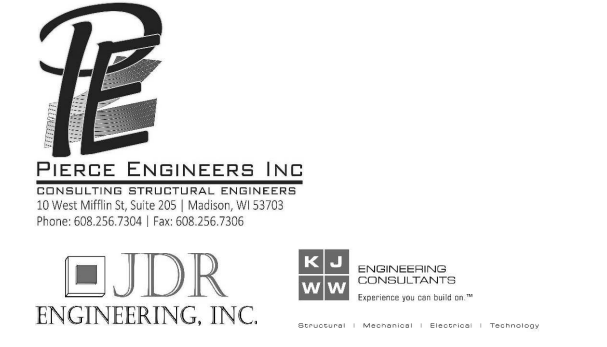
ALL EXISTING FIXTURES, FITTINGS, FLOOR AND WALL SURFACES IN EVERY ROOM OF FIRE STATION #1 NOT REQUIRING NEW PAINT OR SURFACINGS SHALL BE THOROUGHLY CLEANED AND, WHERE APPROPRIATE, POLISHED USING CLEANING AGENTS AND METHODS RESULTING IN A LIKE-NEW APPEARANCE.

FLOOR PLAN GENERAL NOTES

- ALL CMU EXPOSED TO ROOMS IN FIRE STATION #1 SHALL BE STACK BOND.
- ALL NEW WALLS SHALL BE TYPE S3A 11, UNLESS NOTED OTHERWISE. SEE WALL TYPES A000.



eppstein uhen : architects
 milwaukee 333 East Chicago Street
 Milwaukee, Wisconsin 53202
 tel 414 271 5350 fax 414 271 7794
 madison 222 West Washington Ave, Suite 650
 Madison, Wisconsin 53703
 tel 608 442 5350 fax 608 442 6680



PROJECT INFORMATION

**FIRE DEPARTMENT
 ADMIN OFFICES AND
 ALTERATIONS TO
 FIRE STATION #1**

316 West Dayton St.
 Madison, WI 53703



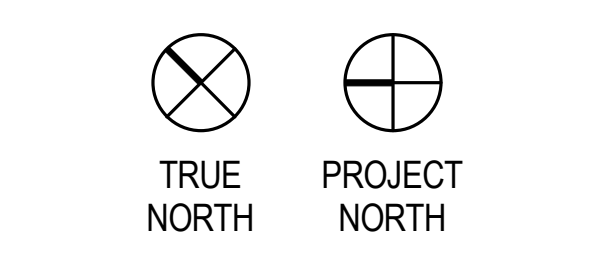
ISSUANCE AND REVISIONS

**95% CONSTRUCTION
 DOCUMENTS - CITY
 REVIEW**

REVISIONS

#	DATE	DESCRIPTION

KEY PLAN



SHEET INFORMATION

PROGRESS DOCUMENTS

These documents reflect progress and intent and may be subject to change, including additional detail. These are not final construction documents and should not be used for final bidding or construction-related purposes.

PROJECT MANAGER	CG
PROJECT NUMBER	12149
DATE	06/20/2014

**FIRE STATION 1
 SECOND FLOOR
 PLAN**

A102

© Eppstein Uhen Architects, Inc.

1 2 3 4 5 6 7