



Sheet Index

- 1 Perspective
- 2 Perspective
- 3 Perspective
- 4 Perspective
- 5 Perspective
- 6 Watts Entry - East
- 7 Watts Entry - West
- 8 Context Site Plan
- 9 Context Site Plan
- 10 Context Site Plan
- 11 Overall Landscape Layout
- 12 East Landscape Layout
- 13 West Landscape Layout
- 14 Site Plan
- 15 Usable Open Space
- 16 Lot Coverage
- 17 Fire Access
- 18 Lighting Layout
- 19 East - Elevations
- 20 East - Enlarged Elevation
- 21 West - Elevations
- 22 West - Enlarged Elevation
- 23 East - Basement Plan
- 24 East - First Floor Plan
- 25 East - Second Floor Plan
- 26 East - Third Floor Plan
- 27 West - Basement Plan
- 28 West - First Floor Plan
- 29 West - Second and Third Floors Plans

















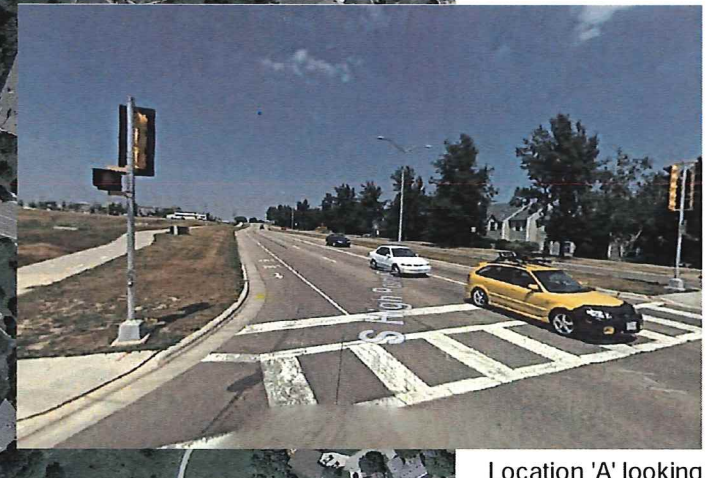
Location 'C'
looking East



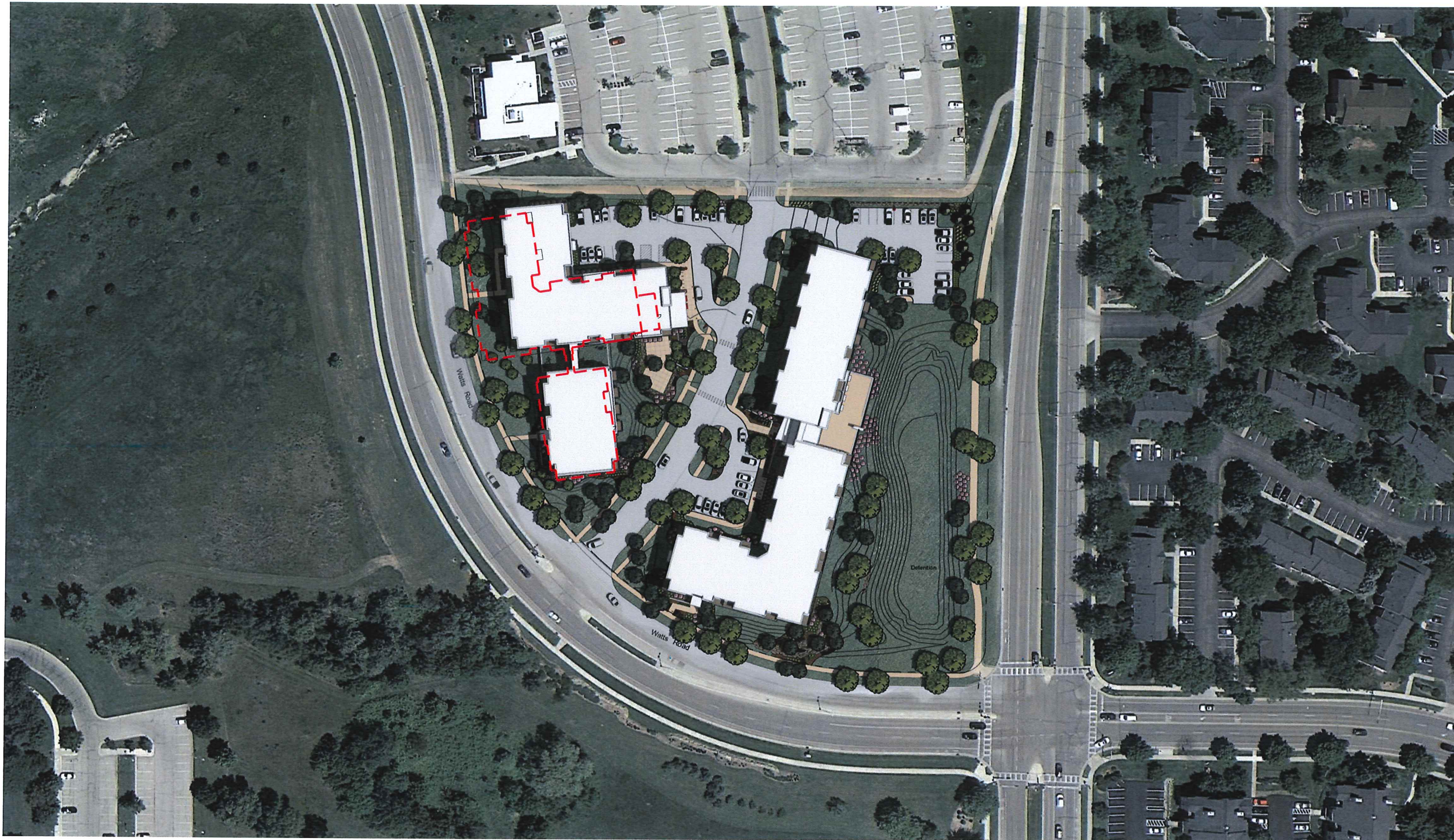
Location 'D'
looking South



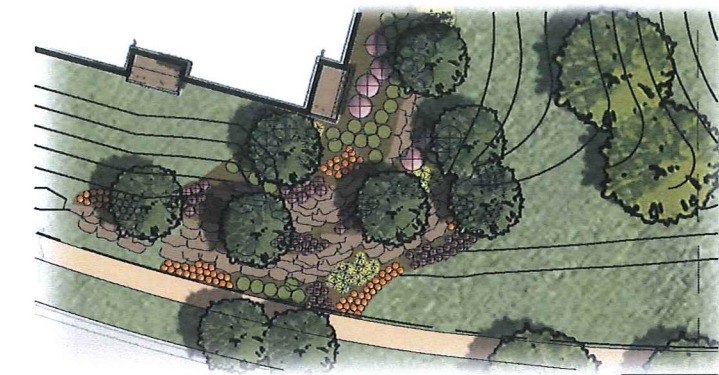
Location 'B'
looking Southeast



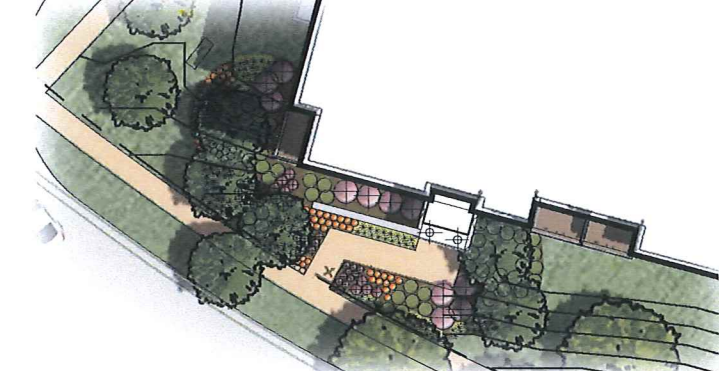
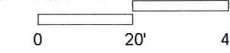
Location 'A' looking
Northeast



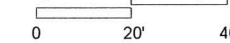




Detail A East Building - SE Corner



Detail B East Building - SW Corner



Development Area	Landscape	Site Total	West		East			
			Pts	Only	Only	Total	Only	Total
	Overstory Decid. Tree	35	60	2100	25	875	35	1225
	Ornamental Tree	15	83	1245	40	600	43	645
	Evergreen Tree	15	8	120	-	-	8	120
	Deciduous Shrub	2	781	1562	323	646	458	916
	Evergreen Shrub	3	42	126	24	72	18	54
	Perennial	2	2893	5786	1358	2704	1541	3082
	Ornamental Wall	4	-	-	-	-	-	-
Total Points Provided			10,951		4,909		6,042	
Total Points Required			2,709		1,050		1,659	
Development Area			(66,949)		(30,057)		(36,892)	
- 5 Points Req'd per 300 sf			1,115		500		615	
Frontage Points			1,594		550		1,044	

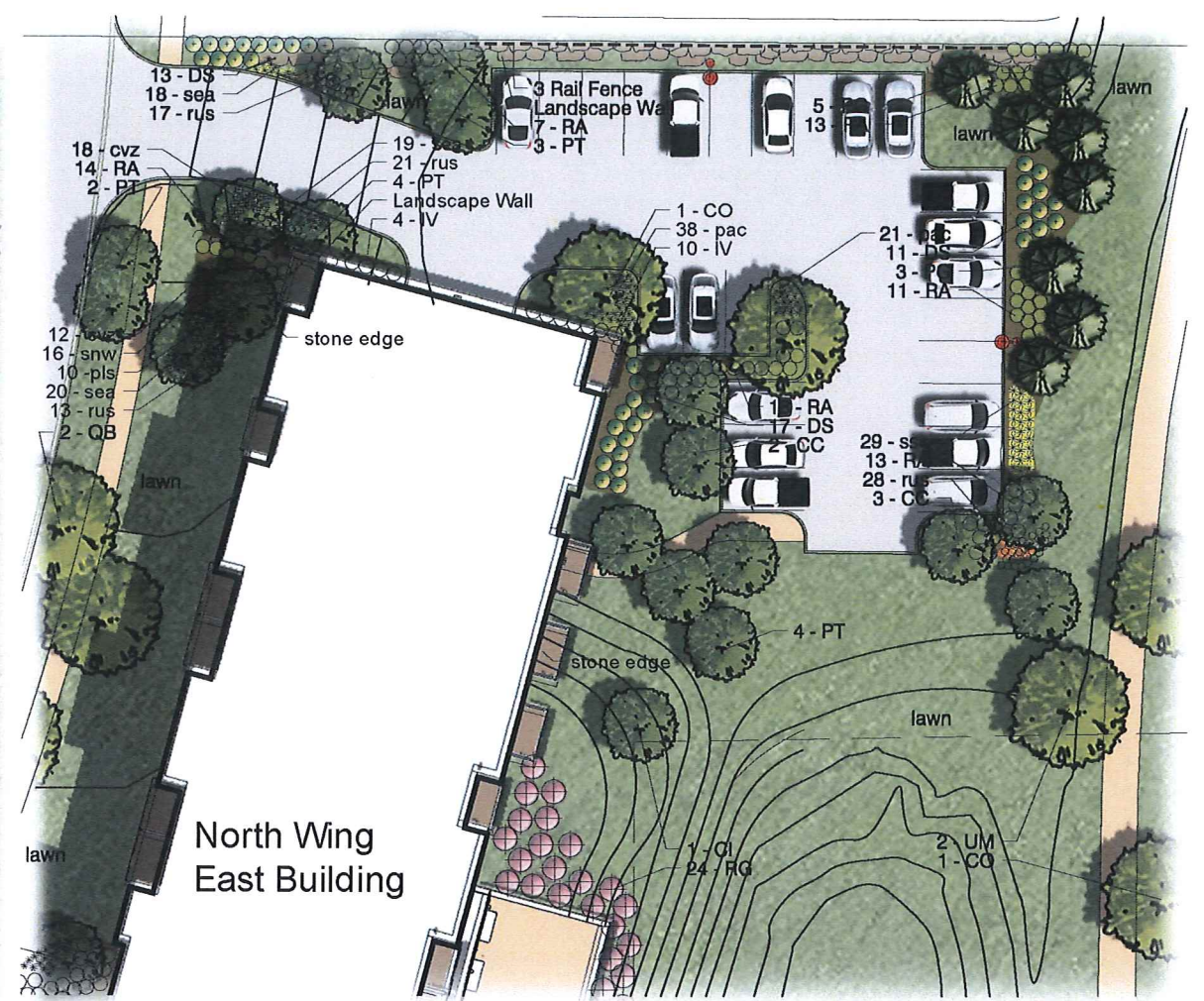
Development Frontage	West	East	West		East	
			(Watts Rd)	328 LF	(Highpoint Rd)	167 LF
	Trees	Shrubs	Trees	Shrubs	Trees	Shrubs
Required (in points)	11	55	210	8	120	84
	385	165	6	28	15	75
			525	225		
Req'd additional points			550		1,044	

west	east	sym	Botanic Name	Common Name	Size	Notes
15	8	7	CC Carpinus caroliniana	American Hornbeam	8' Ht. BB	multi-stem
15	7	8	CI Crataegus crus-galli 'Inermis'	Thornless Hawthorn	8' Ht. BB	multi-stem
18	4	14	CO Celtis occidentalis 'Windy City'	Windy City Hackberry	2.5' BB	single leader
5	2	3	GA Ginkgo biloba 'Autumn Gold'	Autumn Gold Ginkgo	2.5' BB	single leader
5	5	-	MD Malus 'David'	David Crabapple	8' Ht. BB	multi-stem
8	-	8	PG Picea glauca 'Black Hills'	Black Hills Spruce	8' Ht. BB	uniform
48	20	28	PT Populus tremuloides	Quaking Aspen	8-12' BB	multi-stem
19	8	11	QB Quercus bicolor	Swamp White Oak	2' BB	single leader
18	11	7	UM Ulmus x 'Morton'	Morton Elm	2.5' BB	single leader

west	east	sym	Botanic Name	Common Name	Size	Notes
42	24	18	BG Buxus x 'Glencoe'	Glencoe Boxwood	24" BB	-
89	26	63	DS Diervilla sessilifolia 'Butterfly'	Southern Bush Honeysuckle	24" BB	-
12	7	5	EA Euonymus alatus 'compactum'	Compact Burningbush	24" BB	-
8	4	4	HT Hydrangea paniculata 'Tardiva'	Tardiva Hydrangea	4' BB	-
100	61	39	IV Itea virginica 'Morton'	Morton Sweetspire	24" BB	-
403	173	230	RA Rhus aromatica 'Gro Low'	Gro Low Sumac	18" BB	-
81	-	81	RG Rhus typhina	Staghorn Sumac	3' BB	-
51	25	26	RT Rhus typhina 'Bailliger'	Tiger Eyes Sumac	3' BB	-
37	27	10	VJ Viburnum x 'Juddii'	Judd Viburnum	3' BB	Speciman

west	east	sym	Botanic Name	Common Name	Size	Notes
221	89	132	asb Allium 'Summer Beauty'	Summer Beauty Onion	#1 Cont.	15" on center
83	23	40	ch Chelone lyonii 'Hot Lips'	Pink Turtlehead	#1 Cont.	random
297	164	133	cvz Coreopsis vert. 'Zagreb'	Zagreb Coreopsis	#1 Cont.	18" on center
63	51	12	mst Matteuccia struthiopteris	Ostrich Fern	#1 Cont.	random
495	237	258	pac Pennisetum alopecuroides 'Cassian'	Cassian Fountain Grass	#1 Cont.	18" on center
113	46	67	pls Perovskia atriplicifolia 'Little Spire'	Little Spire Russian Sage	#1 Cont.	30" on center
-	-	-	plg Pachysandra terminalis 'Green Carpet'	Green Carpet Pachysandra	4" pots	10" on center
438	148	290	rus Rudbeckia fulgida 'Goldsturm'	Goldsturm Coneflower	#1 Cont.	18" on center
103	39	64	saj Sedum 'Autumn Joy'	Autumn Joy Stonecrop	#1 Cont.	18" on center
601	325	276	sea Sesleria autumnalis	Autumn Moor Grass	#1 Cont.	18" on center
173	104	69	soh Stachys officinalis 'Hummelo'	Hummelo Betony	#1 Cont.	18" on center
194	108	86	snw Salvia nemorosa 'Wesuwe'	Wesuwe Meadow Sage	#1 Cont.	18" on center
138	24	114	ssc Schizachyrium scoparium 'Carousel'	Carousel Little Bluestem	#2 Cont.	30" on center

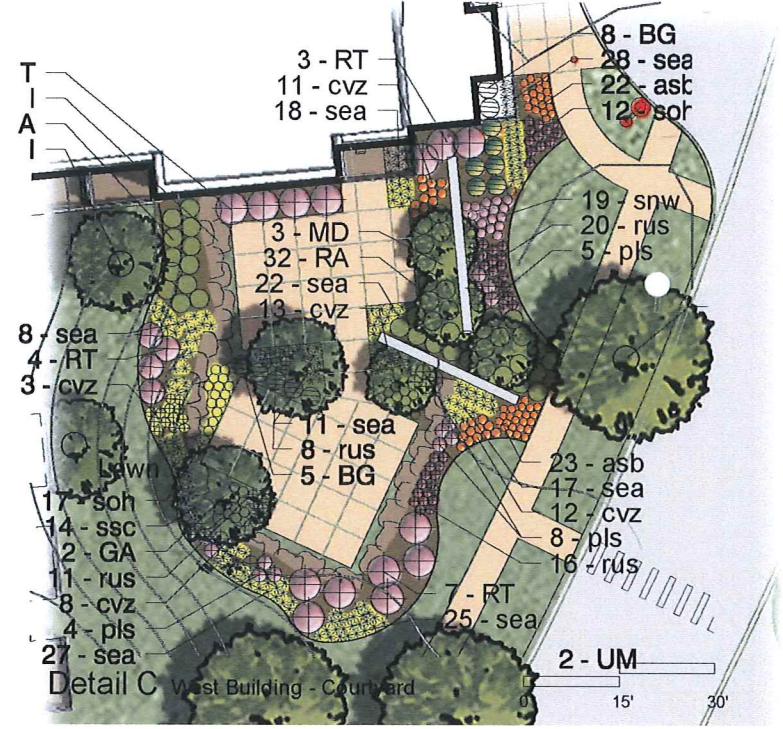
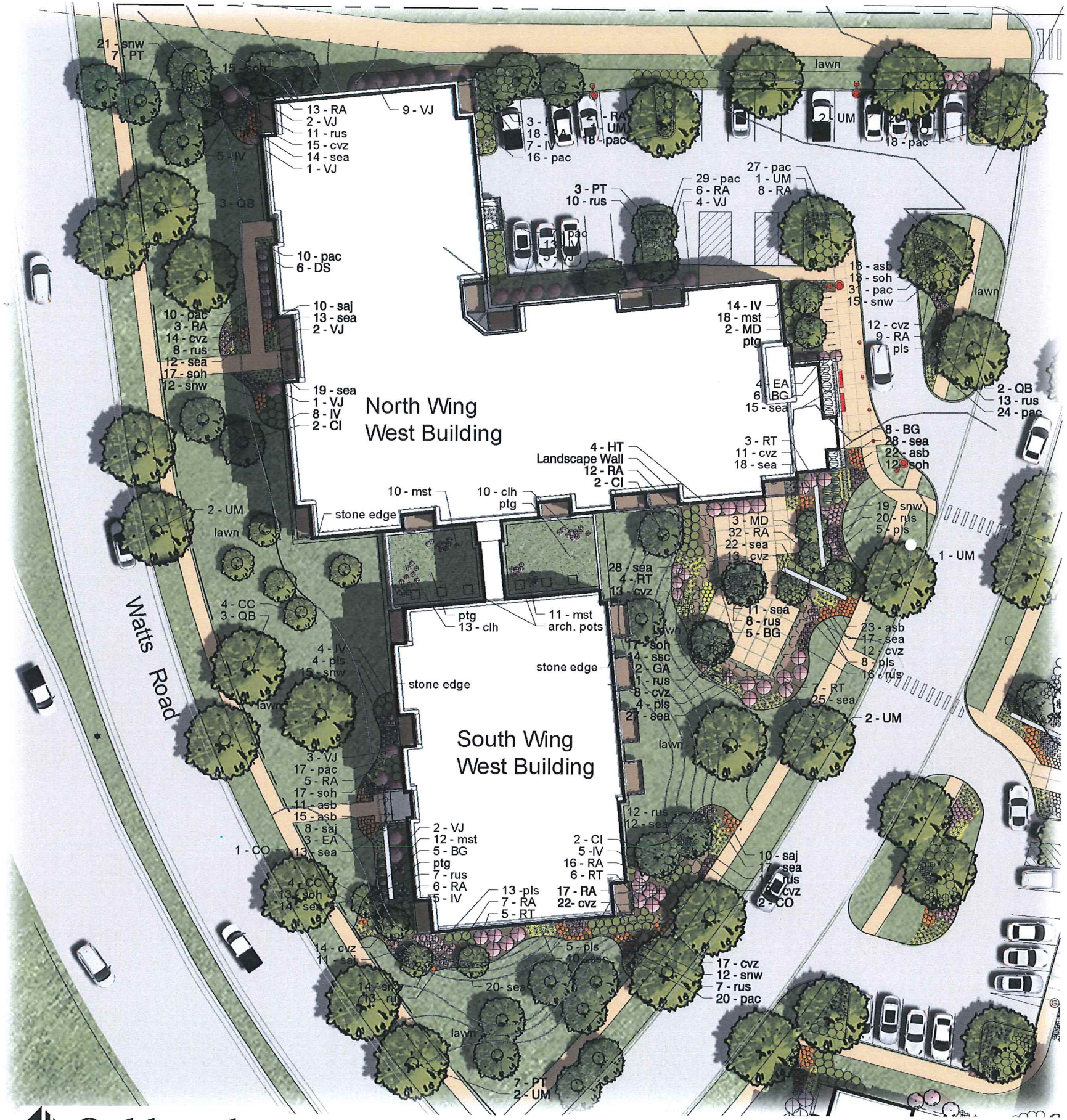




Trees			Botanic Name	Common Name	Size	Notes
west	east	sym				
15	8	7	CC	Carpinus caroliniana	8' Ht. BB	multi-stem
15	7	8	CI	Crataegus crus-galli 'Inermis'	8' Ht. BB	multi-stem
18	4	14	CO	Celtis occidentalis 'Windy City'	2.5' BB	single leader
5	2	3	GA	Ginkgo biloba 'Autumn Gold'	2.5' BB	single leader
5	5	-	MD	Malus 'David'	8' Ht. BB	multi-stem
8	-	8	PG	Picea glauca 'Black Hills'	8' Ht. BB	uniform
48	20	28	PT	Populus tremuloides	8-12' BB	multi-stem
19	8	11	QB	Quercus bicolor	2' BB	single leader
18	11	7	UM	Ulmus x 'Morton'	2.5' BB	single leader

Shrubs			Botanic Name	Common Name	Size	Notes
west	east	sym				
42	24	18	BG	Buxus x 'Glencoe'	24" BB	-
89	26	63	DS	Diervilla sessilifolia 'Butterfly'	24" BB	-
12	7	5	EA	Euonymus alatus 'compactum'	4" BB	-
8	4	4	HT	Hydrangea paniculata 'Tardiva'	24" BB	-
100	61	39	IV	Itea virginica 'Morton'	24" BB	-
403	173	230	RA	Rhus aromatica 'Gro Low'	18" BB	-
81	-	81	RG	Rhus typhina	3' BB	-
51	25	26	RT	Rhus typhina 'Bailliger'	3' BB	-
37	27	10	VJ	Viburnum x 'Juddii'	3' BB	Specimen

Perennials			Botanic Name	Common Name	Size	Notes
west	east	sym				
221	89	132	asb	Allium 'Summer Beauty'	#1 Cont.	15" on center
63	23	40	clh	Chelone lyonii 'Hot Lips'	#1 Cont.	random
297	164	133	cvz	Coreopsis vert. 'Zagreb'	#1 Cont.	18" on center
63	51	12	mst	Matteuccia struthiopteris	#1 Cont.	random
495	237	258	pac	Pennisetum alopecuroides 'Cassian'	#1 Cont.	18" on center
113	-	46	pis	Perovskia atriplicifolia 'Little Spire'	#1 Cont.	30" on center
-	-	-	plg	Pachysandra terminalis 'Green Carpet'	4" pots	10" on center
438	148	290	rus	Rudbeckia fulgida 'Goldsturm'	#1 Cont.	18" on center
103	39	64	saj	Sedum 'Autumn Joy'	#1 Cont.	18" on center
601	325	276	sea	Sesleria autumnalis	#1 Cont.	18" on center
173	104	69	soh	Stachys officinalis 'Hummelo'	#1 Cont.	18" on center
194	108	86	snw	Salvia nemorosa 'Wesuwe'	#1 Cont.	18" on center
138	24	114	ssc	Schizachyrium scoparium 'Carousel'	#2 Cont.	30" on center



west	east	sym	Botanic Name	Common Name	Size	Notes
15	8	7 CC	<i>Carpinus caroliniana</i>	American Hornbeam	8' Ht. BB	multi-stem
15	7	8 CI	<i>Crataegus crus-galli</i> 'Inermis'	Thornless Hawthorn	8' Ht. BB	multi-stem
18	4	14 CO	<i>Celtis occidentalis</i> 'Windy City'	Windy City Hackberry	2.5' BB	single leader
5	2	3 GA	<i>Ginkgo biloba</i> 'Autumn Gold'	Autumn Gold Ginkgo	2.5' BB	single leader
5	5	- MD	<i>Malus</i> 'David'	David Crabapple	8' Ht. BB	multi-stem
8	-	8 PG	<i>Picea glauca</i> 'Black Hills'	Black Hills Spruce	8' Ht. BB	uniform
48	20	28 PT	<i>Populus tremuloides</i>	Quaking Aspen	8-12' BB	multi-stem
19	8	11 QB	<i>Quercus bicolor</i>	Swamp White Oak	2' BB	single leader
18	11	7 UM	<i>Ulmus</i> x 'Morton'	Morton Elm	2.5' BB	single leader

Shrubs						
west	east	sym	Botanic Name	Common Name	Size	Notes
42	24	18 BG	<i>Buxus</i> x 'Glencoe'	Glencoe Boxwood	24" BB	-
89	26	63 DS	<i>Diervilla sessilifolia</i> 'Butterfly'	Southern Bush Honeysuckle	24" BB	-
12	7	5 EA	<i>Euonymus alatus</i> 'compactum'	Compact Burningbush	24" BB	-
8	4	4 HT	<i>Hydrangea paniculata</i> 'Tardiva'	Tardiva Hydrangea	4' BB	-
100	61	39 IV	<i>Itea virginica</i> 'Morton'	Morton Sweetspire	24" BB	-
403	173	230 RA	<i>Rhus aromatica</i> 'Gro Low'	Gro Low Sumac	18" BB	-
81	-	81 RG	<i>Rhus typhina</i>	Slaghorn Sumac	3' BB	-
51	25	26 RT	<i>Rhus typhina</i> 'Bailliger'	Tiger Eyes Sumac	3' BB	-
37	27	10 VJ	<i>Viburnum</i> x 'Juddii'	Judd Viburnum	3' BB	Specimen

Perennials						
west	east	sym	Botanic Name	Common Name	Size	Notes
221	89	132 asb	<i>Allium</i> 'Summer Beauty'	Summer Beauty Onion	#1 Cont.	15" on center
63	23	40 clh	<i>Chelone lyonii</i> 'Hot Lips'	Pink Turtlehead	random	15" on center
297	164	133 cvz	<i>Coreopsis vert.</i> 'Zagreb'	Zagreb Coreopsis	#1 Cont.	18" on center
63	51	12 mst	<i>Matteuccia struthiopteris</i>	Ostrich Fern	#1 Cont.	random
495	237	258 pac	<i>Pennisetum alopecuroides</i> 'Cassian'	Cassian Fountain Grass	#1 Cont.	18" on center
113	46	67 pls	<i>Perovskia atriplicifolia</i> 'Little Spire'	Little Spire Russian Sage	#1 Cont.	30" on center
-	-	- plg	<i>Pachysandra terminalis</i> 'Green Carpet'	Green Carpet Pachysandra	4" pots	10" on center
438	148	290 rus	<i>Rudbeckia fulgida</i> 'Goldstum'	Goldsturm Coneflower	#1 Cont.	18" on center
103	39	64 saj	<i>Sedum</i> 'Autumn Joy'	Autumn Joy Stonecrop	#1 Cont.	18" on center
601	325	276 sea	<i>Sesleria autumnalis</i>	Autumn Moor Grass	#1 Cont.	18" on center
173	104	69 soh	<i>Stachys officinalis</i> 'Hummelo'	Hummelo Betony	#1 Cont.	18" on center
194	108	86 snw	<i>Salvia nemorosa</i> 'Wesuwe'	Wesuwe Meadow Sage	#1 Cont.	18" on center
138	24	114 ssc	<i>Schizachyrium scoparium</i> 'Carousel'	Carousel Little Bluestem	#2 Cont.	30" on center