

APPLICATION FOR  
URBAN DESIGN COMMISSION  
REVIEW AND APPROVAL

AGENDA ITEM # \_\_\_\_\_  
Project # \_\_\_\_\_  
Legistar # \_\_\_\_\_

DATE SUBMITTED: <u>FEB 10, 2010</u>	<input type="checkbox"/> Informational Presentation
UDC MEETING DATE: <u>FEB 17, 2010</u>	<input type="checkbox"/> Initial Approval and/or Recommendation
	<input checked="" type="checkbox"/> Final Approval and/or Recommendation

PLEASE PRINT!

PLEASE PRINT!

PROJECT ADDRESS: 2222 S. PARK ST.

ALDERMANIC DISTRICT: \_\_\_\_\_

OWNER/DEVELOPER (Partners and/or Principals) <u>URBAN LEAGUE OF GREATER MADISON</u>	ARCHITECT/DESIGNER/OR AGENT: <u>TRI-NORTH BUILDERS, INC</u>
<u>2222 S. PARK ST</u> <u>SEE 100</u>	<u>2625 RESEARCH PK DRIVE</u>
<u>MADISON, WI 53713</u>	<u>MADISON, WI 53711</u>

CONTACT PERSON: STEVE HARMS  
 Address: 2625 RESEARCH PARK DR  
MADISON, WI 53711  
 Phone: 608 271 8717  
 Fax: 608 271 3354  
 E-mail address: sharms@tri-north.com

- TYPE OF PROJECT:  
(See Section A for:)
- Planned Unit Development (PUD)
    - General Development Plan (GDP)
    - Specific Implementation Plan (SIP)
  - Planned Community Development (PCD)
    - General Development Plan (GDP)
    - Specific Implementation Plan (SIP)
  - Planned Residential Development (PRD)
    - New Construction or Exterior Remodeling in an Urban Design District \* (A public hearing is required as well as a fee) \* MINOR ALTERATION TO A PREVIOUSLY APPROVED PROJECT
    - School, Public Building or Space (Fee may be required)
    - New Construction or Addition to or Remodeling of a Retail, Hotel or Motel Building Exceeding 40,000 Sq. Ft.
    - Planned Commercial Site

(See Section B for:)  
 New Construction or Exterior Remodeling in C4 District (Fee required)

(See Section C for:)  
 R.P.S.M. Parking Variance (Fee required)

(See Section D for:)  
 Comprehensive Design Review\* (Fee required)  
 Street Graphics Variance\* (Fee required)  
 Other \_\_\_\_\_

\*Public Hearing Required (Submission Deadline 3 Weeks in Advance of Meeting Date)  
Where fees are required (as noted above) they apply with the first submittal for either initial or final approval of a project.

Feb 10, 2010

Memo to: Urban Design Commission  
From: Urban League of Greater Madison

Re: Minor Alteration to a previously approved plan  
2222 S. Park St.

The previously approved plan had anticipated a color scheme shown in the approved renderings.

The actual materials used (supplier awarded the contract) had limited colors for the smooth metal panels used in the horizontal band. Although a "green" was available it is a primary green color vs. the soft anticipated. Poor timing on the suppliers submittals forced the project manager to order before we could have brought this back to UDC.

The Urban League's input strongly favored the actual panel installed.

We regret not submitting the color change prior to fabrication. The entire organization is now aware how critical this is. The entire team is very pleased with the revised final solution.

The copies of the color charts are not true, but the actual color charts will be available at the meeting.

Sincerely:

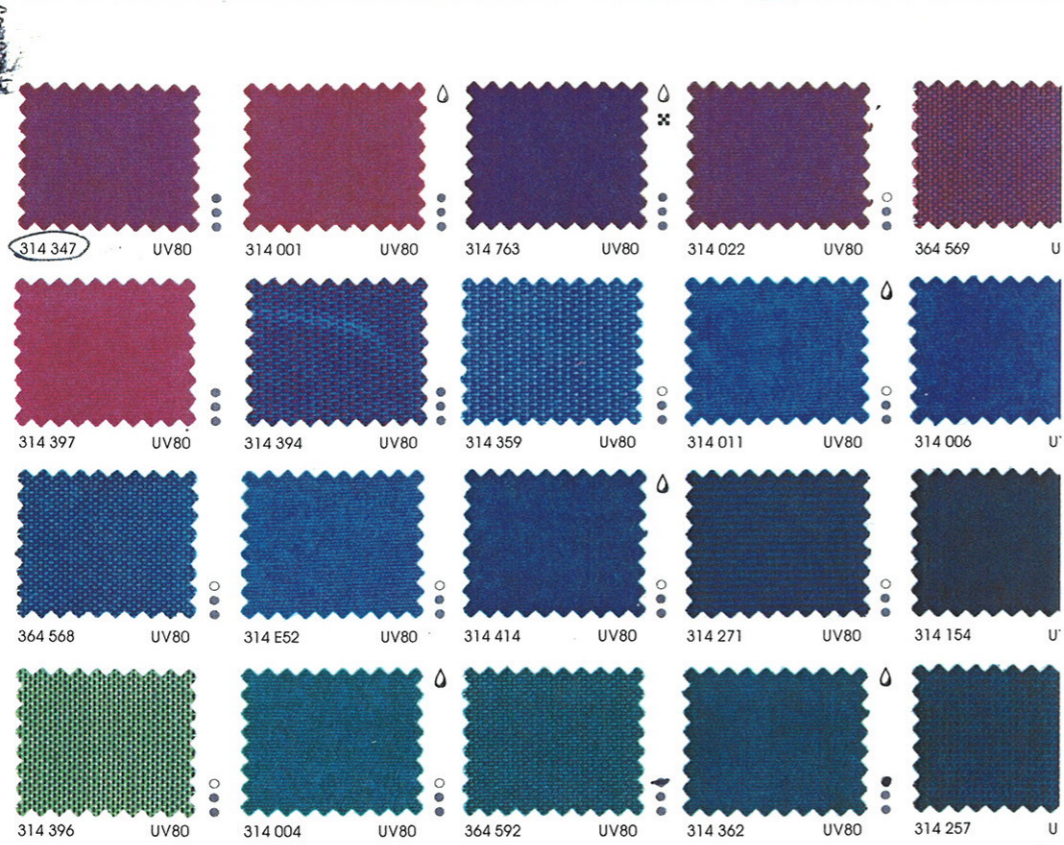
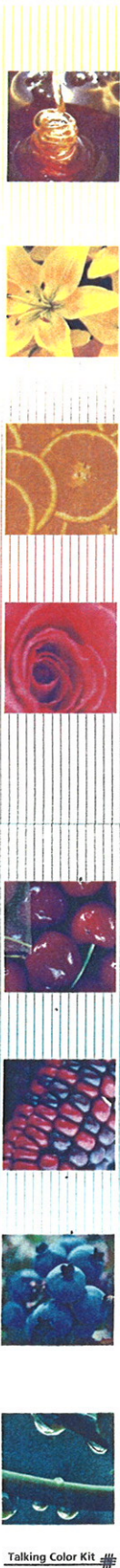
The Urban League of Greater Madison



Project as previously approved.



Project as built.



AWNING COLOR PALETTE

GREEN LEAGUE of GPTP MAISON  
UDC SUBMITTAL 2.10.10 - 2.17.10MTY

METAL ABOVE WINDOWS - AS APPROVED →

Four Millim

SOLID

METAL AT ENTRY CORNER/ ENTRY AS APPROVED ←

ULTEM

METAL PANELS - PREVIOUSLY APPROVED AS "GREEN"

<b>BBR Red</b> LRV 8.06 4&3-BBR-30	<b>BTR Red</b> LRV 11.57 4&3-BTR-50	<b>TOR Red</b> LRV 9.06 4-TOR-70	<b>JLR Red</b> LRV 5.44 4-JLR-50	<b>AUB Blue</b> LRV 3.25 4-AUB-50
<b>CVB Blue</b> LRV 13.79 4-CVB-70	<b>HNB Blue</b> LRV 16.78 4-HNB-50	<b>RTB Blue</b> LRV 9.06 4-RTB-60	<b>SCT Blue</b> LRV 10.71 4-SCT-60	<b>MBU Blue</b> LRV 10.59 4-MBU-30
<b>RBB Blue</b> LRV 2.54 4-RBB-50	<b>HYB Blue</b> LRV 4.20 4-HYB-30	<b>LDG Green</b> LRV 7.72 4-LDG-50	<b>TOB Black</b> LRV 1.01 4-TOB-15	<b>BLX Black</b> LRV 0.89 4&3-BLX-30
<b>CVG Grey</b> LRV 14.38 4&3-CVG-50	<b>BGY Grey</b> LRV 10.41 4-BGY-70			
<b>Metallic BSX Silver</b> LRV 30.94 4-BSX-30	<b>Metallic TSZ Silver</b> LRV 32.00 4-TSZ-80	<b>Metallic TBX Silver</b> LRV 38.65 4&3-TBX-30		

\*Colors shown are as close to actual colors as allowed by the printing process. Due to product improvements, changes and other factors Mitsubishi Chemical F.P. America, Inc. reserves the right to change or delete information herein without prior notice.