



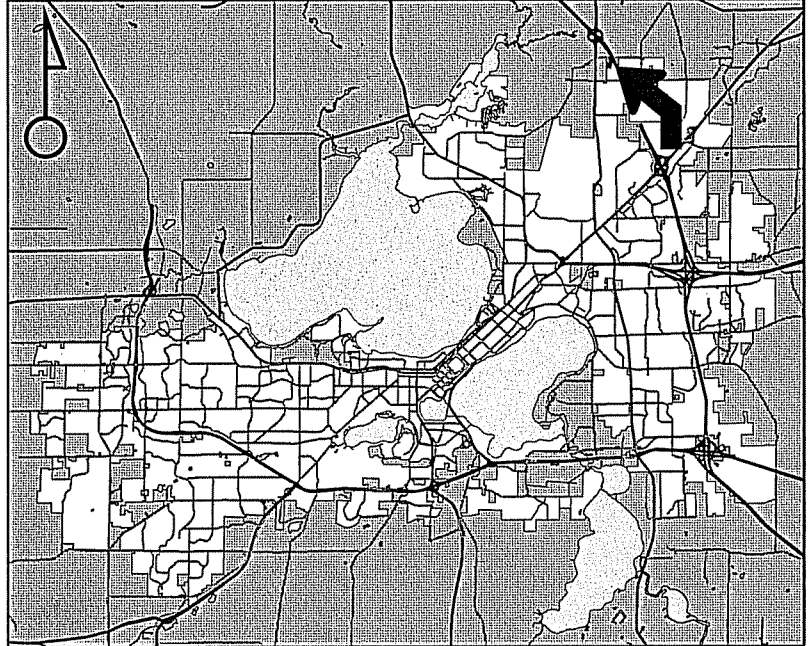
Location
7227-7269 Manufacturers Drive &
3853 Anderson Road

Applicant
Alder Joe Clausius

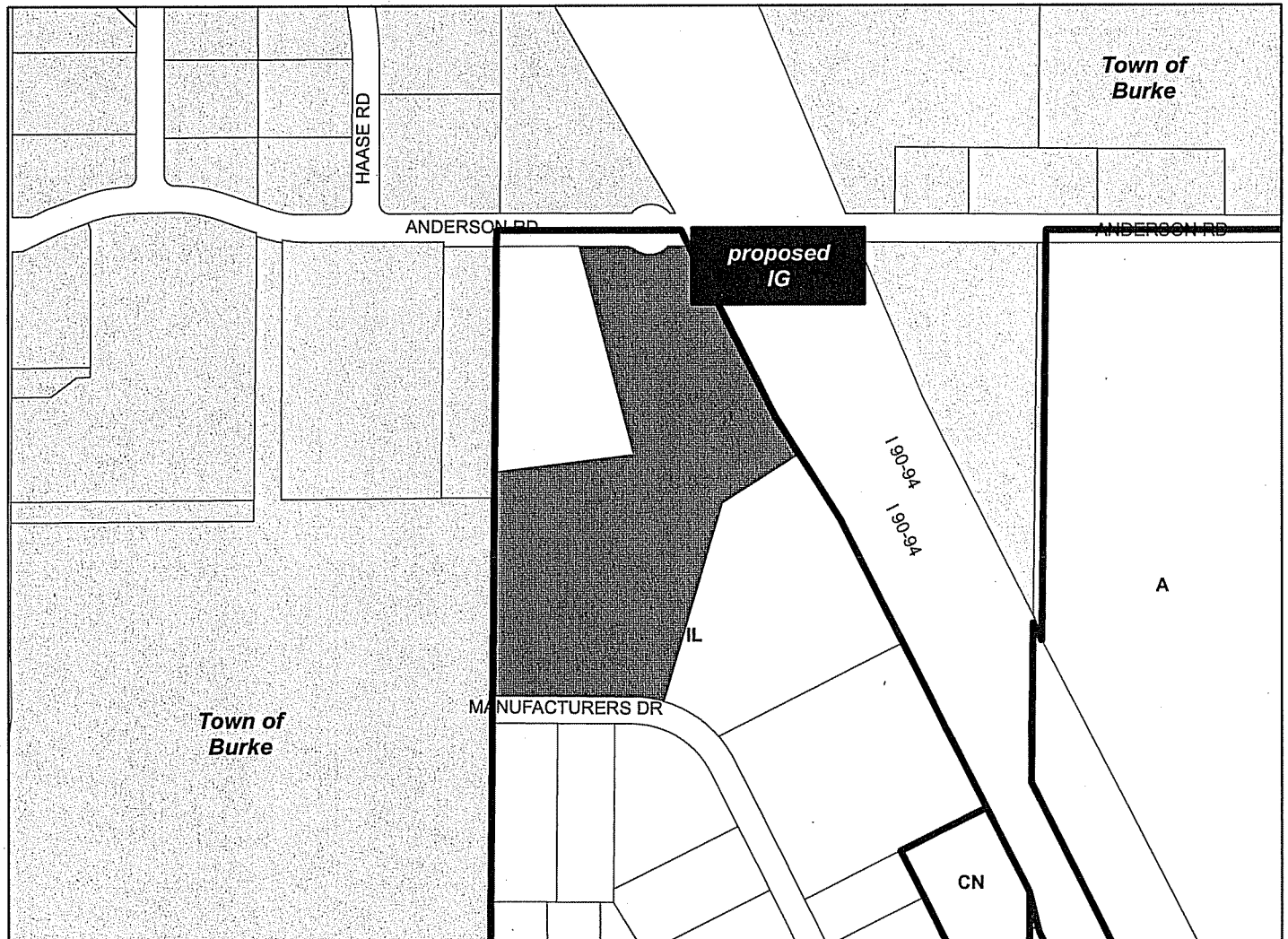
From: IL To: IG

Rezoning Request
Rezone land for future truck sales
and service business

Public Hearing Date
Plan Commission
15 December 2014
Common Council
06 January 2015

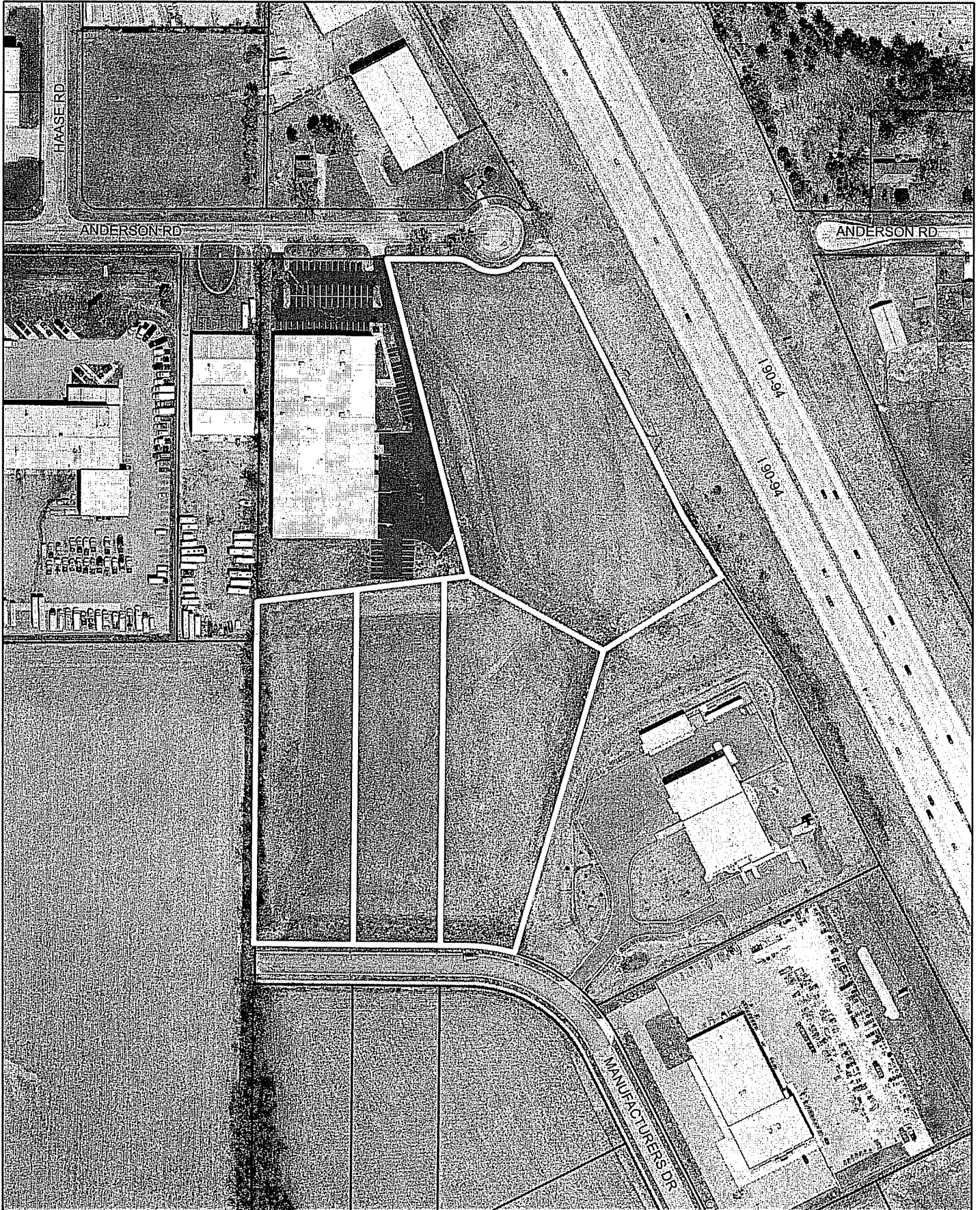


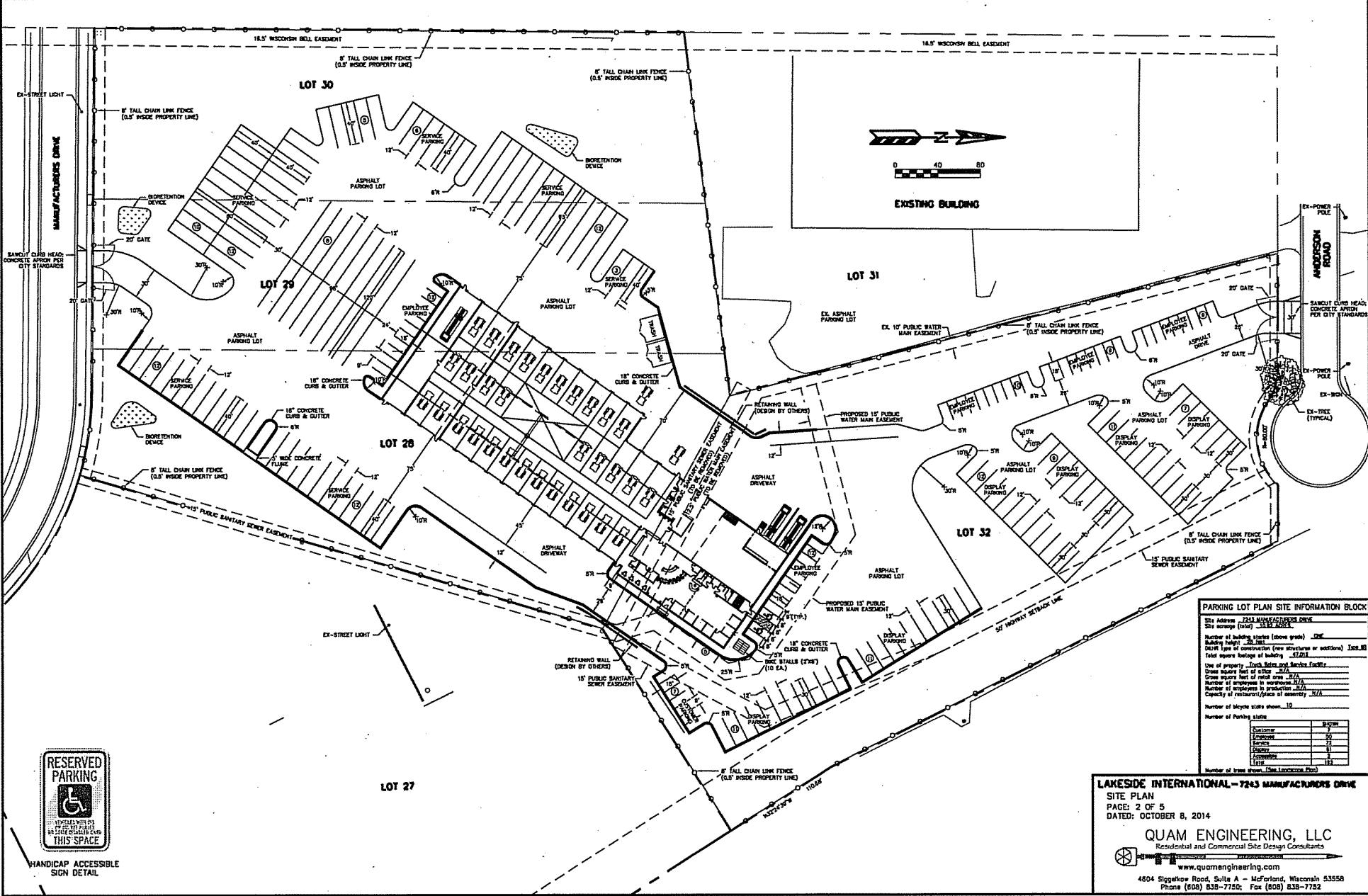
For Questions Contact: Tim Parks at: 261-9632 or tparks@cityofmadison.com or City Planning at 266-4635



Scale : 1" = 400'

City of Madison, Planning Division : RPJ : Date : 09 December 2014





PARKING LOT PLAN SITE INFORMATION BLOCK

Site Address: 7243 MANUFACTURERS DRIVE
 Site Name (if any): LAKESIDE INTERNATIONAL
 Number of building stories (above grade): ONE
 Building height: 20' (TYP.)
 Drive type of construction (see structure or additional) Int. or Ext. Int. Int. Int.
 Total square footage of building: 47,000
 Use of property: Truck Sales and Service Facility
 Drive square feet of lot: 312,000
 Drive square feet of retail area: 112,000
 Number of employees in service: 120
 Number of employees in production: 120
 Capacity of restaurant/price of assembly: N/A
 Number of bicycle stalls shown: 10

Number of Parking Stalls	By Use
Customer	7
Employee	20
Service	21
Display	8
Accessories	8
Other	172

Number of trees shown: (See Landscape Plan)

LAKESIDE INTERNATIONAL - 7243 MANUFACTURERS DRIVE
 SITE PLAN
 PAGE: 2 OF 5
 DATED: OCTOBER 8, 2014

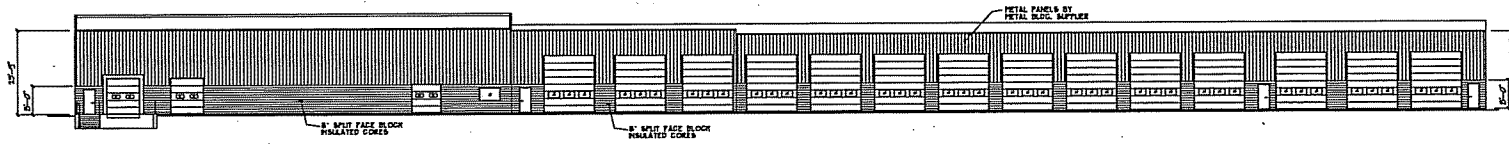
QUAM ENGINEERING, LLC
 Residential and Commercial Site Design Consultants

www.quamengineering.com

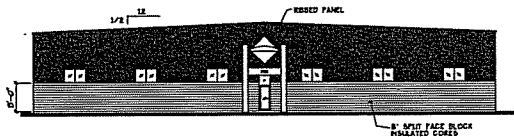
4604 Siggeikow Road, Suite A - McFarland, Wisconsin 53558
 Phone (608) 838-7750; Fax (608) 838-7752

SUBMITTED SITE PLAN

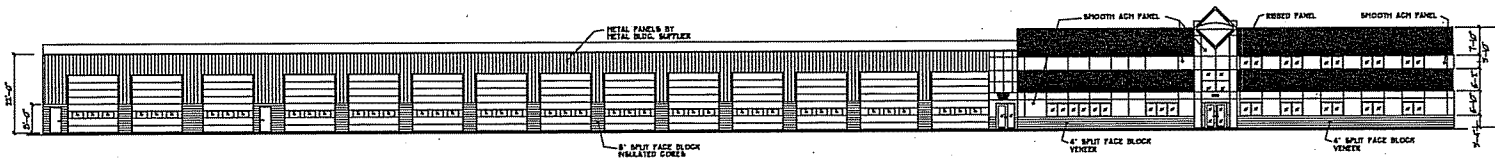
13



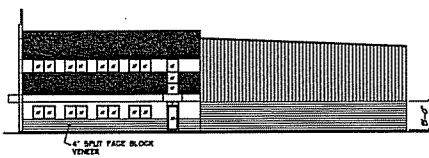
WEST ELEVATION



SOUTH ELEVATION



EAST ELEVATION

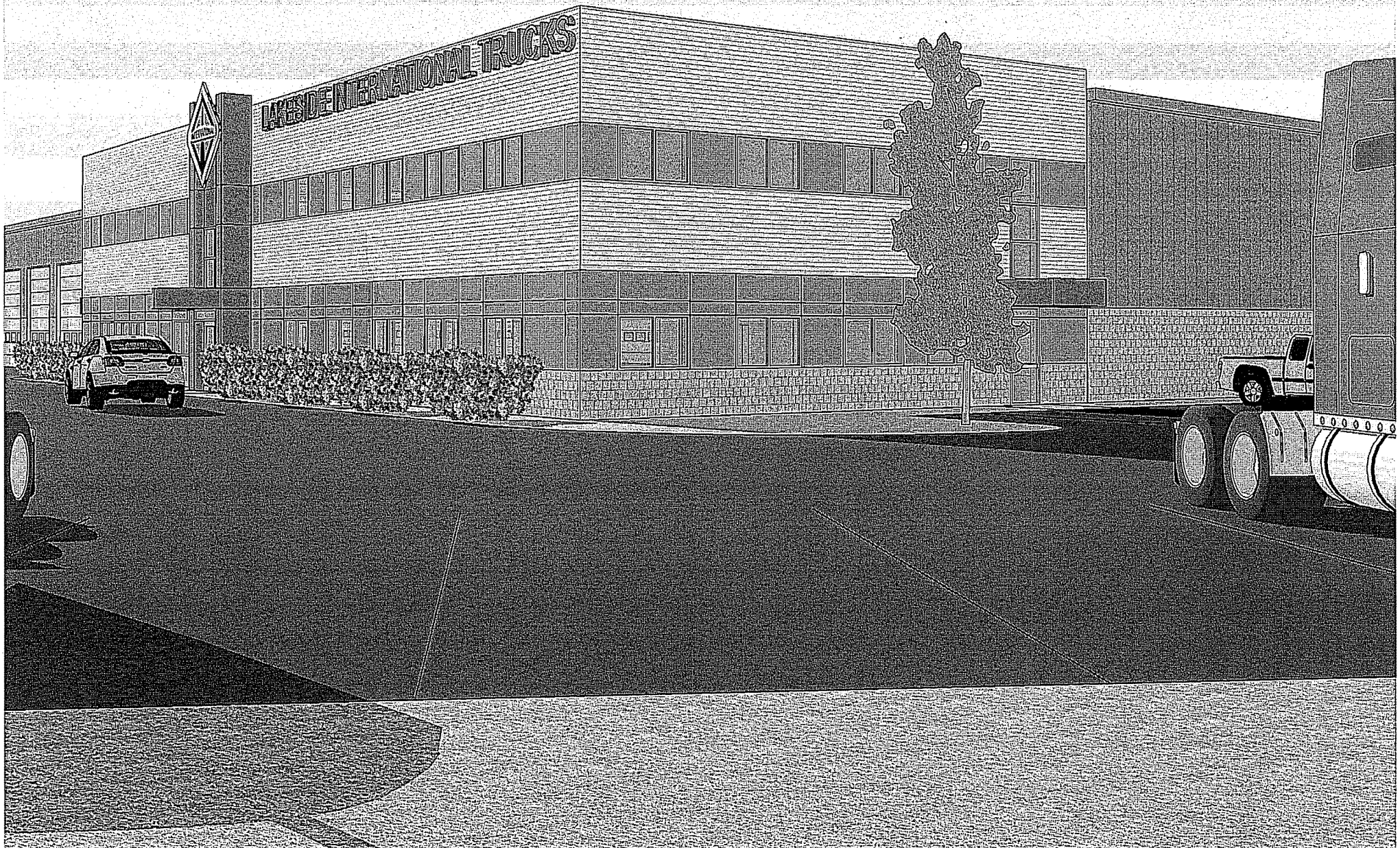


NORTH ELEVATION

REVISORS
Lakeside International New Sales and Service Facility 7243 Manufacturers Drive Madison WI, 53704
1314 East St. Madison, WI 608-271-2288
DRAWING NAME ELEVATIONS DRAWN BY: JIMT DATE: 11-10-14
SHEET A-2.0 FRONT OF 214-026

NORTH EAST CORNER

13



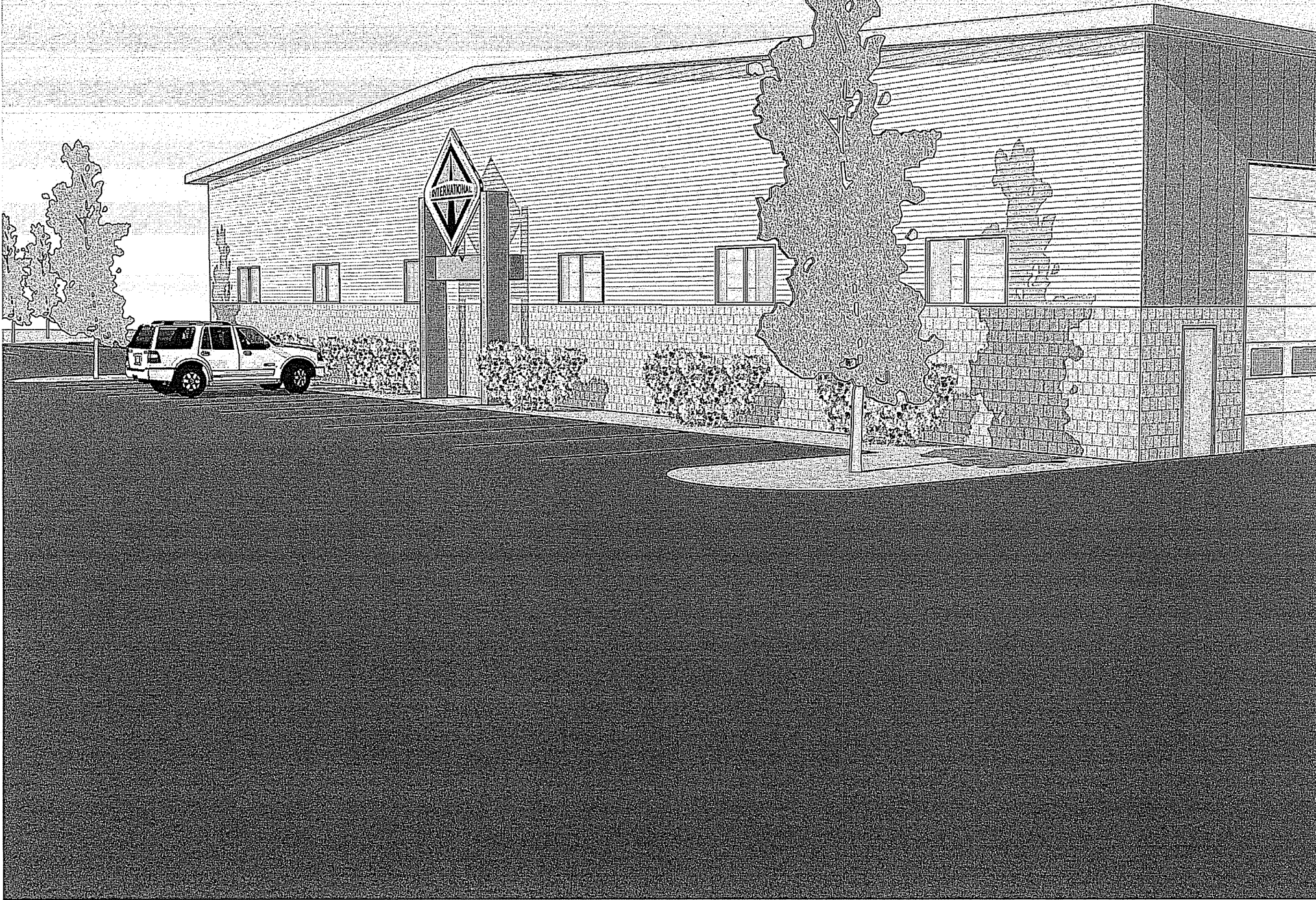
EAST - PARTIAL

13



SOUTH ELEVATION

13



SOUTH ELEVATION

13

