

Madison, Wisconsin

CITY OF MADISON

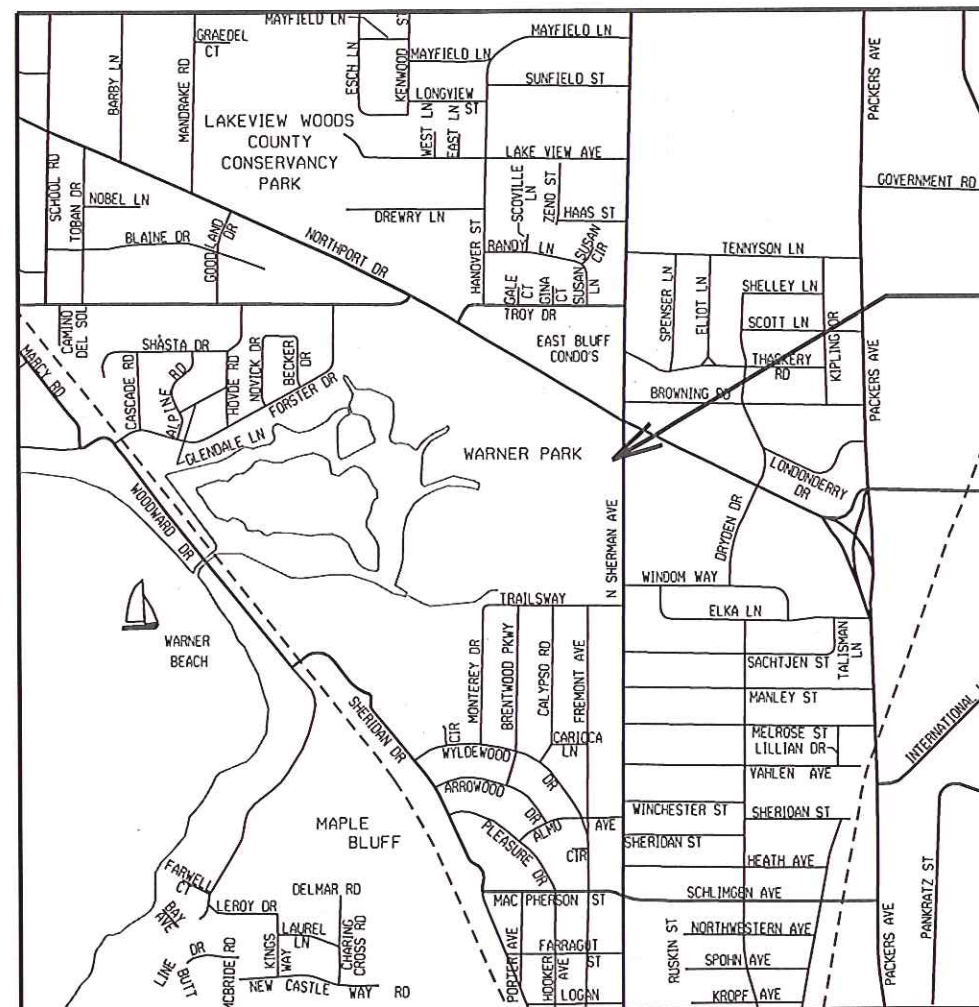
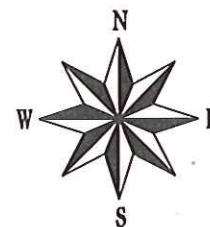
MADISON WATER UTILITY DEPARTMENT OF PUBLIC WORKS PLAN OF PROPOSED IMPROVEMENT

WARNER PARK SERVICE METER AND ENCLOSURE INSTALLATION 2012

CITY PROJECT NO. 53W0795
CONTRACT NO. 6335

INDEX OF SHEETS

SHEET NO.	TITLE
0	SITE PLAN IMPROVEMENTS
1	METER AND ENCLOSURE PLAN DETAIL
2	METER AND ENCLOSURE PROFILE DETAILS
3	ENCLOSURE ROOF PLAN
4	ENCLOSURE LAYOUT
5	ENCLOSURE ELEVATIONS
6	



**CONSTRUCTION
PROJECT LOCATION**

CONVENTIONAL SIGNS

FIELD VERIFY ALL UTILITY LOCATIONS

GAS	— G —
STORM SEWER	— ST —
SANITARY SEWER	— SAN —
WATER	— W —
OVERHEAD ELECTRIC	— OH —
POWER POLE	□
ADA COMPLIANT RAMP W/ DETECTABLE WARNING FIELD	□
COMBUSTIBLE FLUIDS	

PUBLIC IMPROVEMENT PROJECT APPROVED

DECEMBER 13, 2011

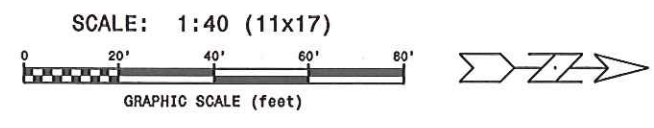
BY THE COMMON COUNCIL
OF MADISON, WISCONSIN

DESIGN APPROVED BY:

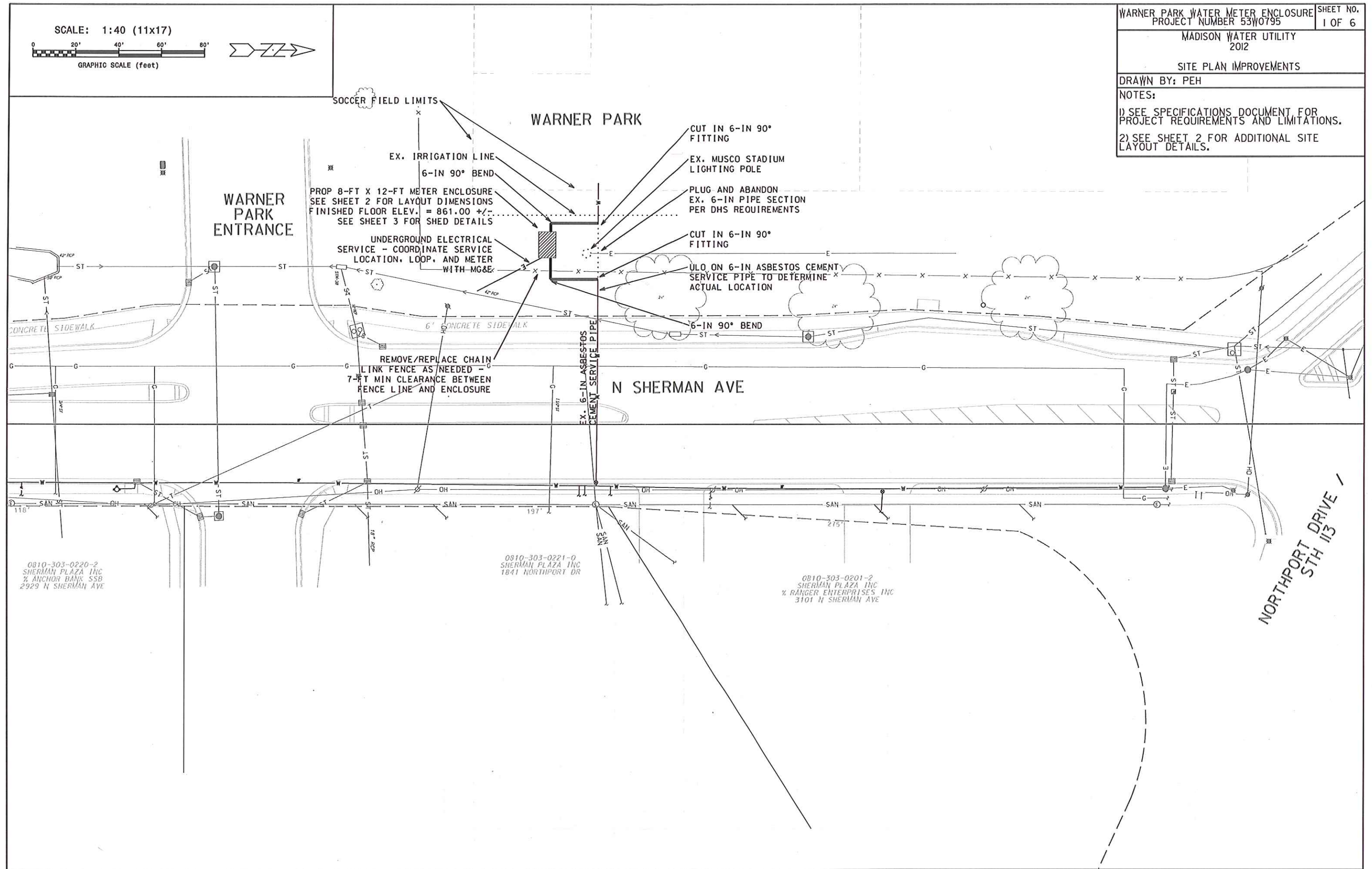
Principal Engineer

Date

DESIGNED BY:



PLOT SCALE: 1"=40'
 PLOT NAME: _____
 REV. DATE: _____
 ORIGINATOR: CITY OF MADISON, WATER UTILITY



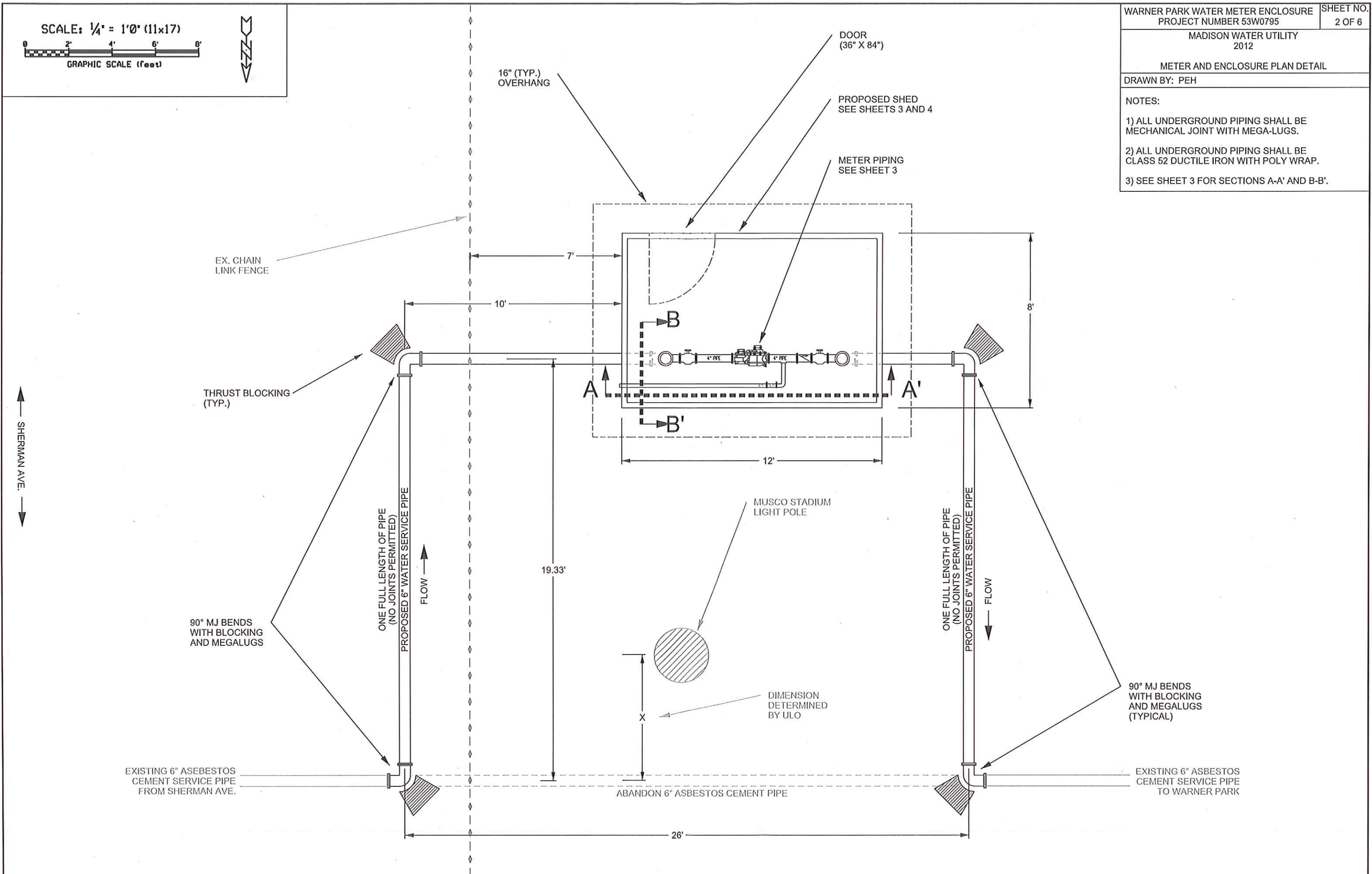
SCALE: 1/4" = 1'0" (11x17)



DRAWN BY: PEH

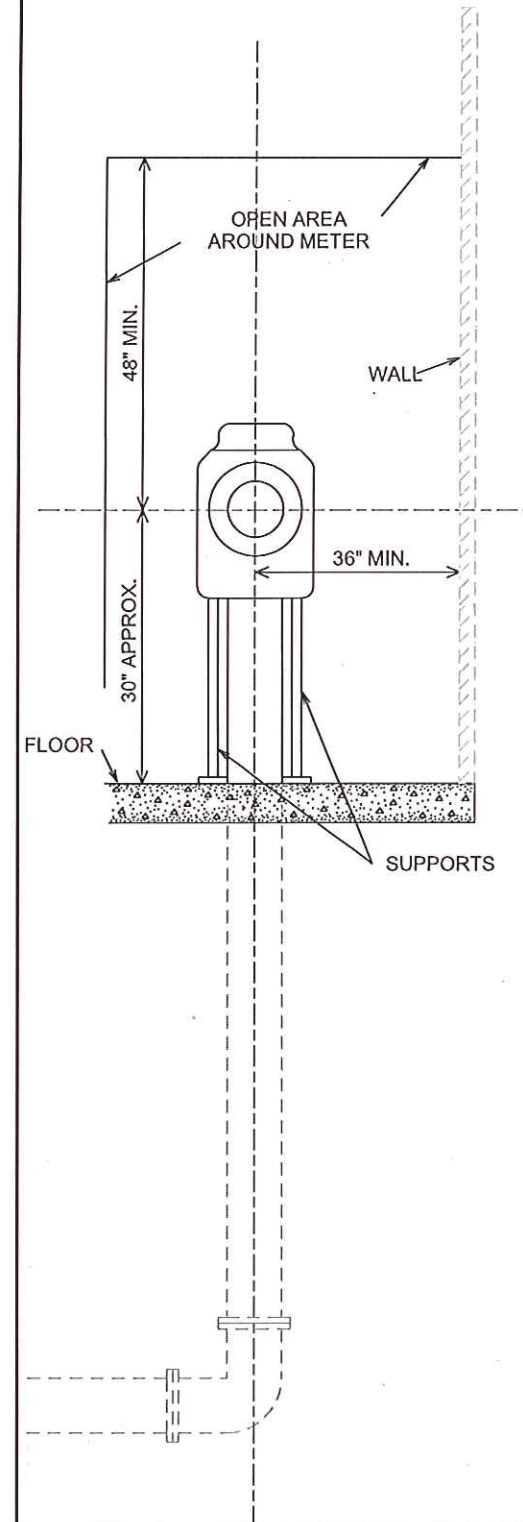
NOTES:

- 1) ALL UNDERGROUND PIPING SHALL BE MECHANICAL JOINT WITH MEGA-LUGS.
- 2) ALL UNDERGROUND PIPING SHALL BE CLASS 52 DUCTILE IRON WITH POLY WRAP.
- 3) SEE SHEET 3 FOR SECTIONS A-A' AND B-B'.

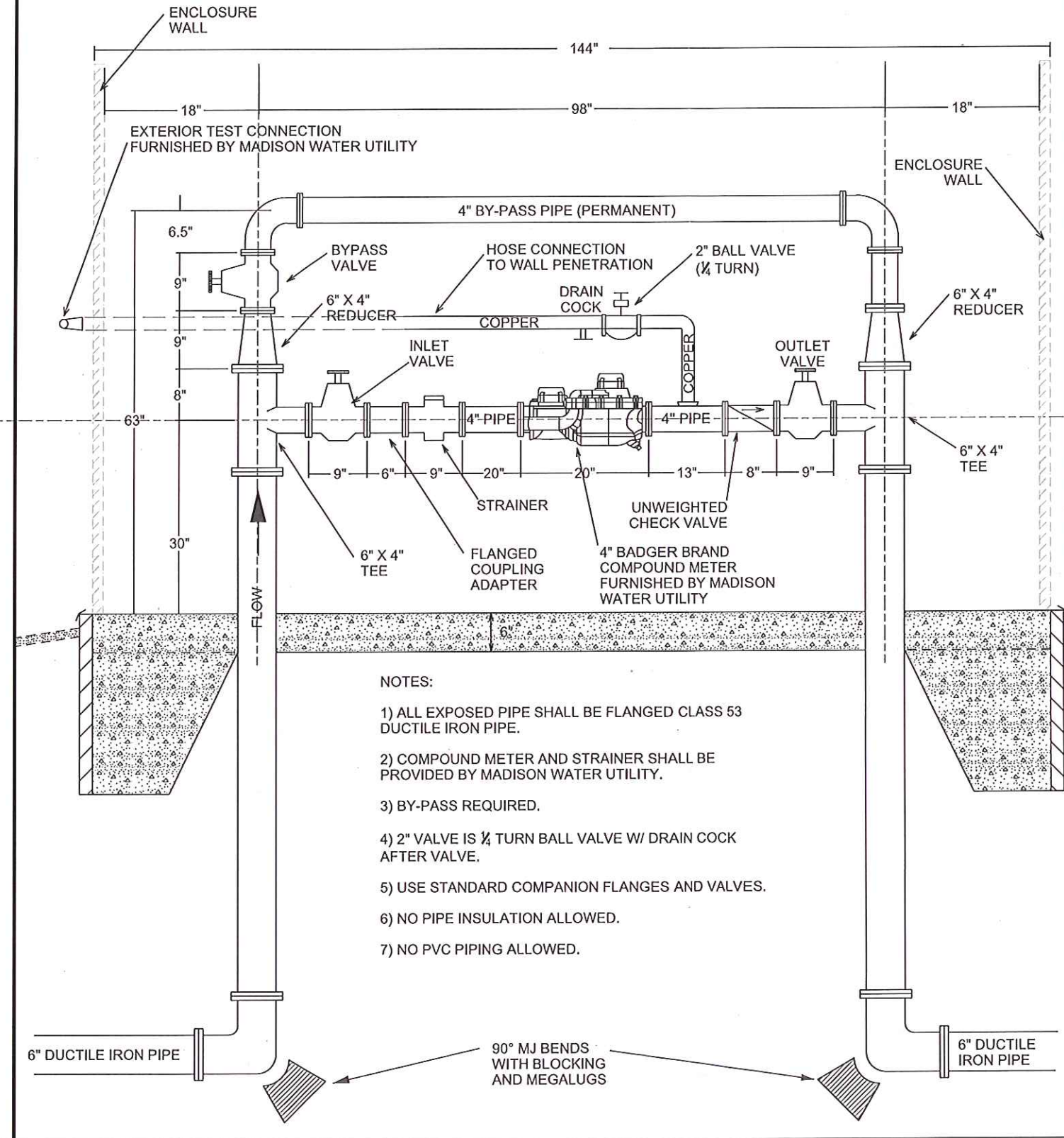


4" BADGER COMPOUND METER				
METER SIZE	METER WEIGHT	METER LAY LENGTH	STRAINER LAY LENGTH	FLOW RATE
4"	85.0 lbs	20"	9"	0.75 - 1000 GPM

SHED SECTION B-B'

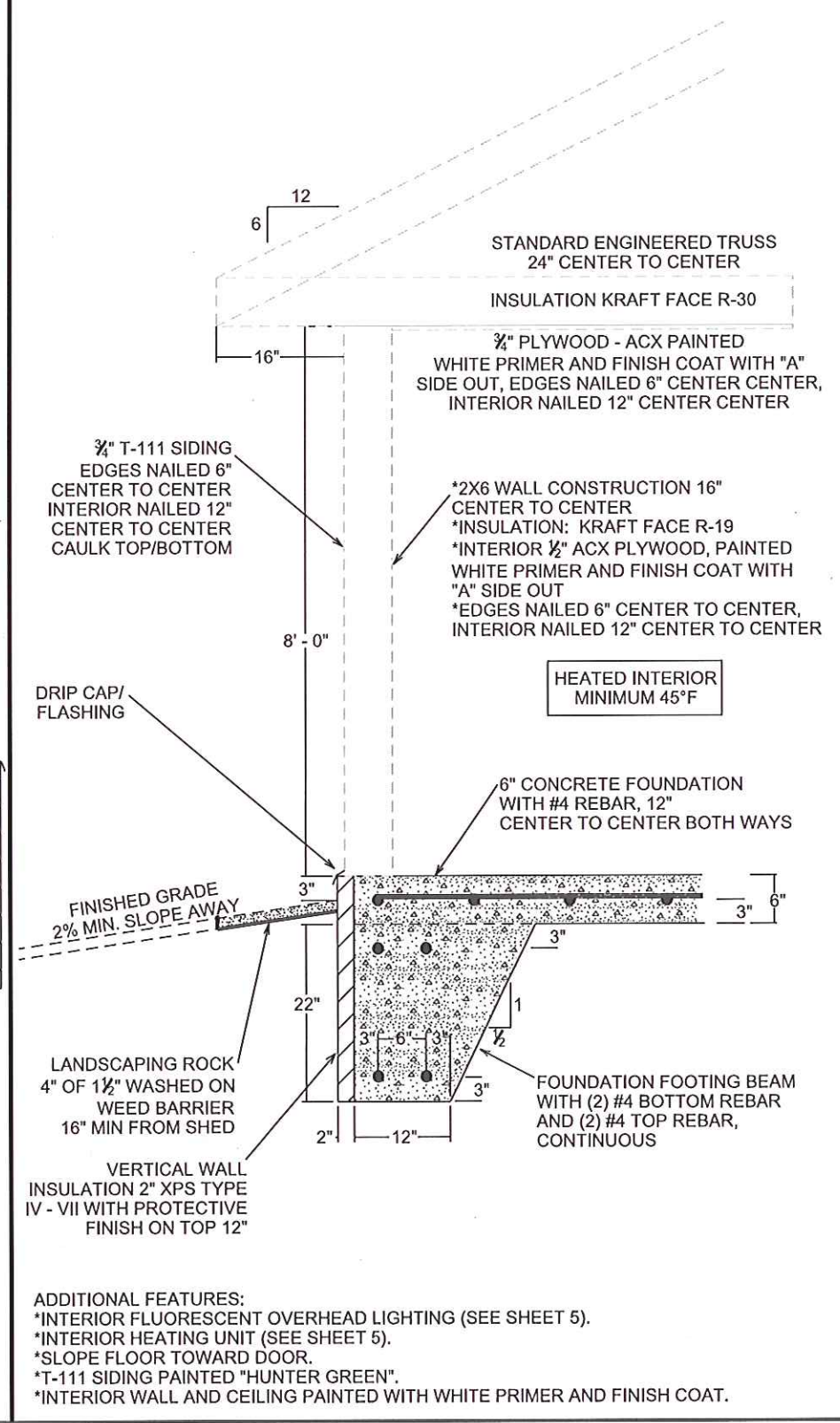


SHED SECTION A-A'



- NOTES:
- 1) ALL EXPOSED PIPE SHALL BE FLANGED CLASS 53 DUCTILE IRON PIPE.
 - 2) COMPOUND METER AND STRAINER SHALL BE PROVIDED BY MADISON WATER UTILITY.
 - 3) BY-PASS REQUIRED.
 - 4) 2" VALVE IS 1/4 TURN BALL VALVE W/ DRAIN COCK AFTER VALVE.
 - 5) USE STANDARD COMPANION FLANGES AND VALVES.
 - 6) NO PIPE INSULATION ALLOWED.
 - 7) NO PVC PIPING ALLOWED.

SHED WALL/FOUNDATION DETAIL



- ADDITIONAL FEATURES:
- *INTERIOR FLUORESCENT OVERHEAD LIGHTING (SEE SHEET 5).
 - *INTERIOR HEATING UNIT (SEE SHEET 5).
 - *SLOPE FLOOR TOWARD DOOR.
 - *T-111 SIDING PAINTED "HUNTER GREEN".
 - *INTERIOR WALL AND CEILING PAINTED WITH WHITE PRIMER AND FINISH COAT.

SCALE: 3/4" = 1'-0" (11x17)



CONTINUOUS SOFFIT VENT
ALL AROUND UNDERSIDE (TYP.)

DRAWN BY: PEH

ROOF NOTES:

- 1) 1/2" PLYWOOD SHEETING.
- 2) 2 LAYERS #15 ROOFING FELT
- 3) 36" ICE SHIELD (ALL EDGES)
- 4) 30-YEAR ARCHITECTURAL RAISED ASPHALT SHINGLES.

14.67'

12'

DOOR
36" X 84"

ROOFTOP CREASE (TYP.)

METAL DRIP STRIP
(ALL AROUND)

1X4 CEDAR
FASCIA

RIDGE VENT
ALONG HIP

10.67'

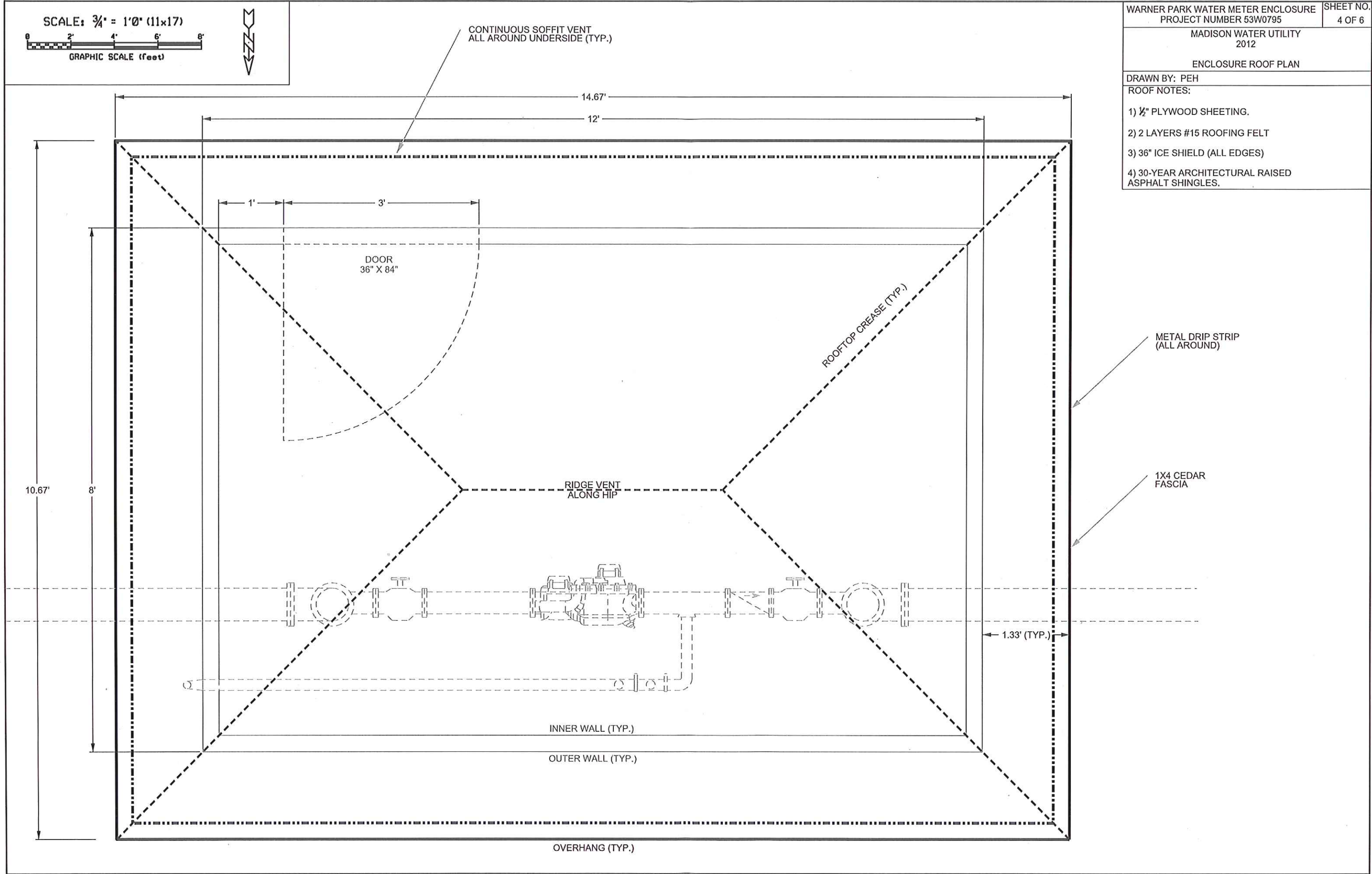
8'

1.33' (TYP.)

INNER WALL (TYP.)

OUTER WALL (TYP.)

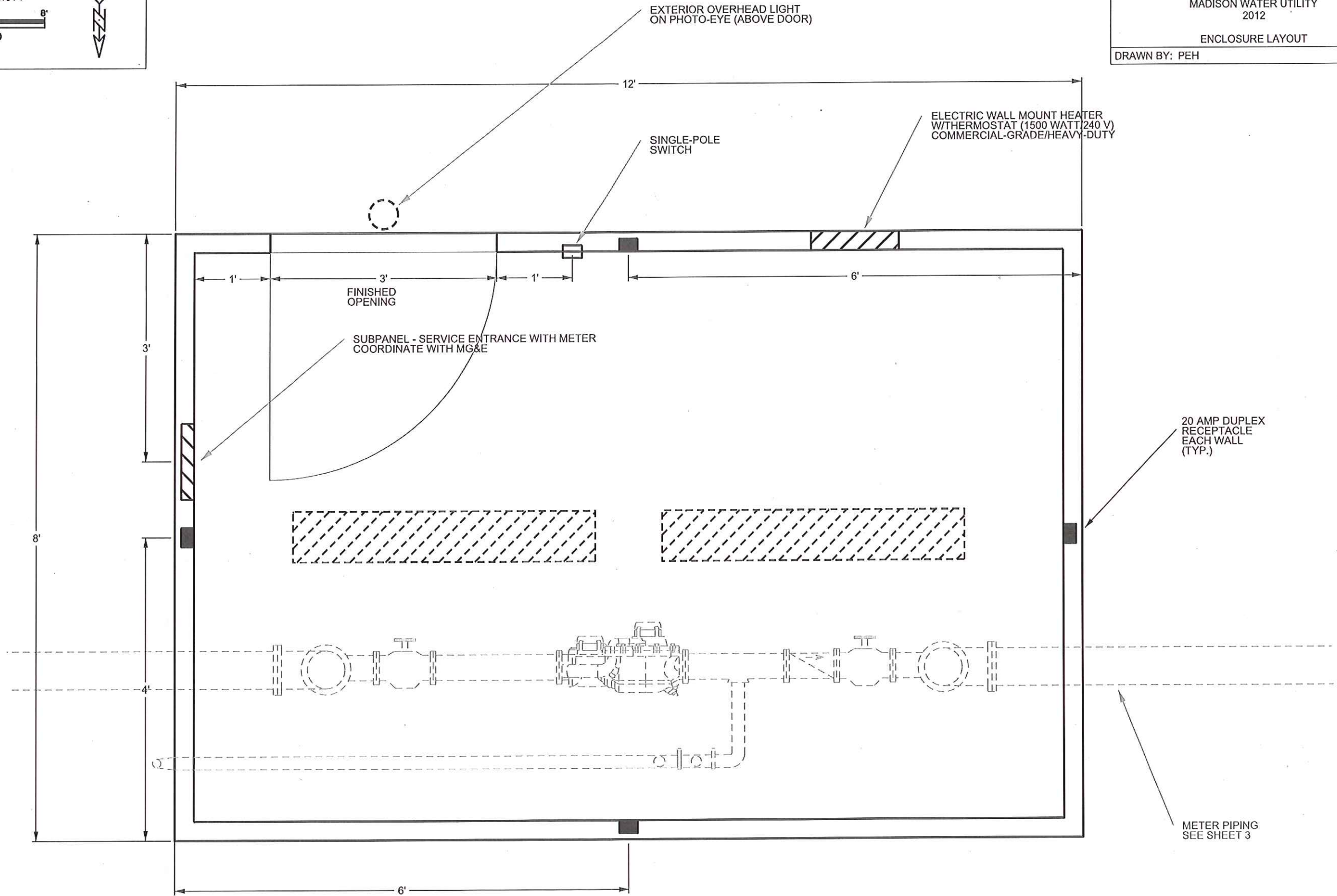
OVERHANG (TYP.)



SCALE: 3/4" = 1'-0" (11x17)



WARNER PARK WATER METER ENCLOSURE PROJECT NUMBER 53W0795	SHEET NO. 5 OF 6
MADISON WATER UTILITY 2012	
ENCLOSURE LAYOUT	
DRAWN BY: PEH	



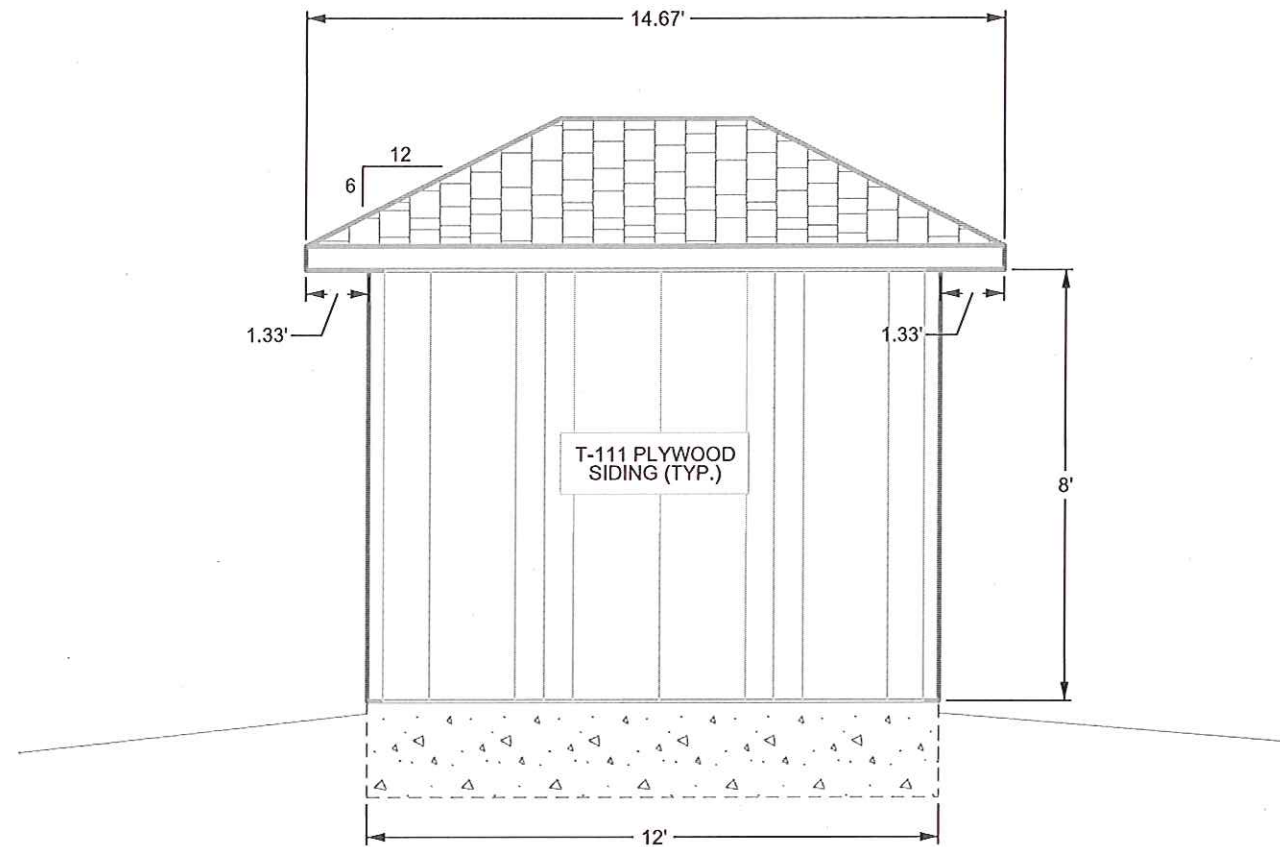
20 AMP DUPLEX
RECEPTACLE
EACH WALL
(TYP.)

METER PIPING
SEE SHEET 3

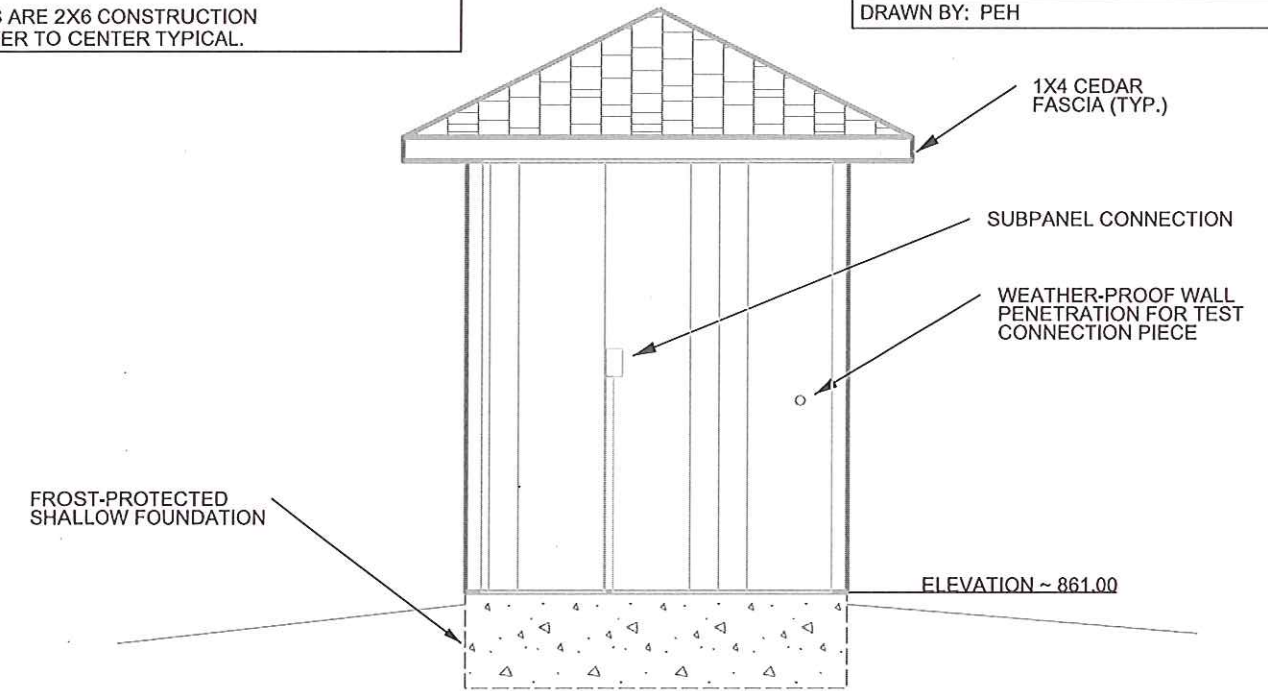
NOTES:

1) BUILDING TO MATCH EXISTING METER BUILDING LOCATED NEAR ENTRANCE TO MALLARDS BASEBALL PARK. SEE ATTACHED PHOTO SAMPLE AND SPECIFICATIONS.

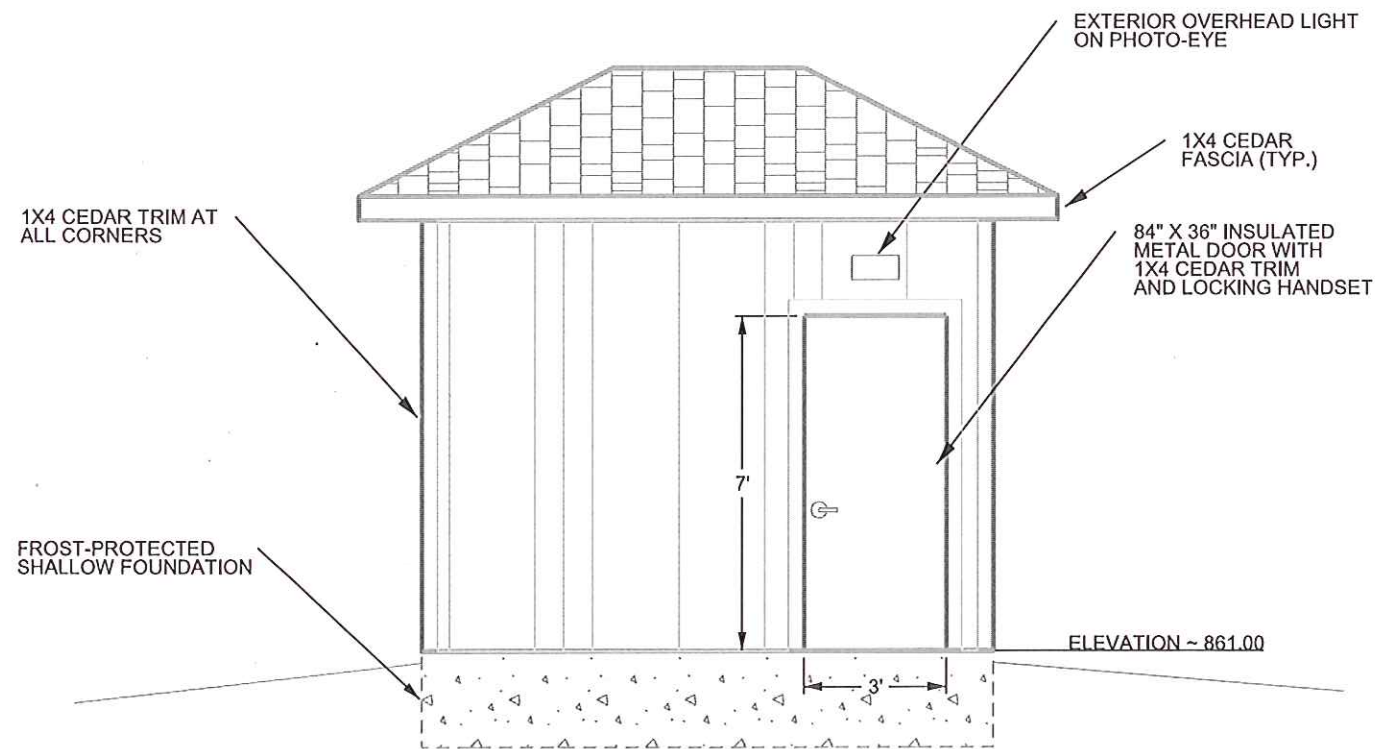
2) WALLS ARE 2X6 CONSTRUCTION 16" CENTER TO CENTER TYPICAL.



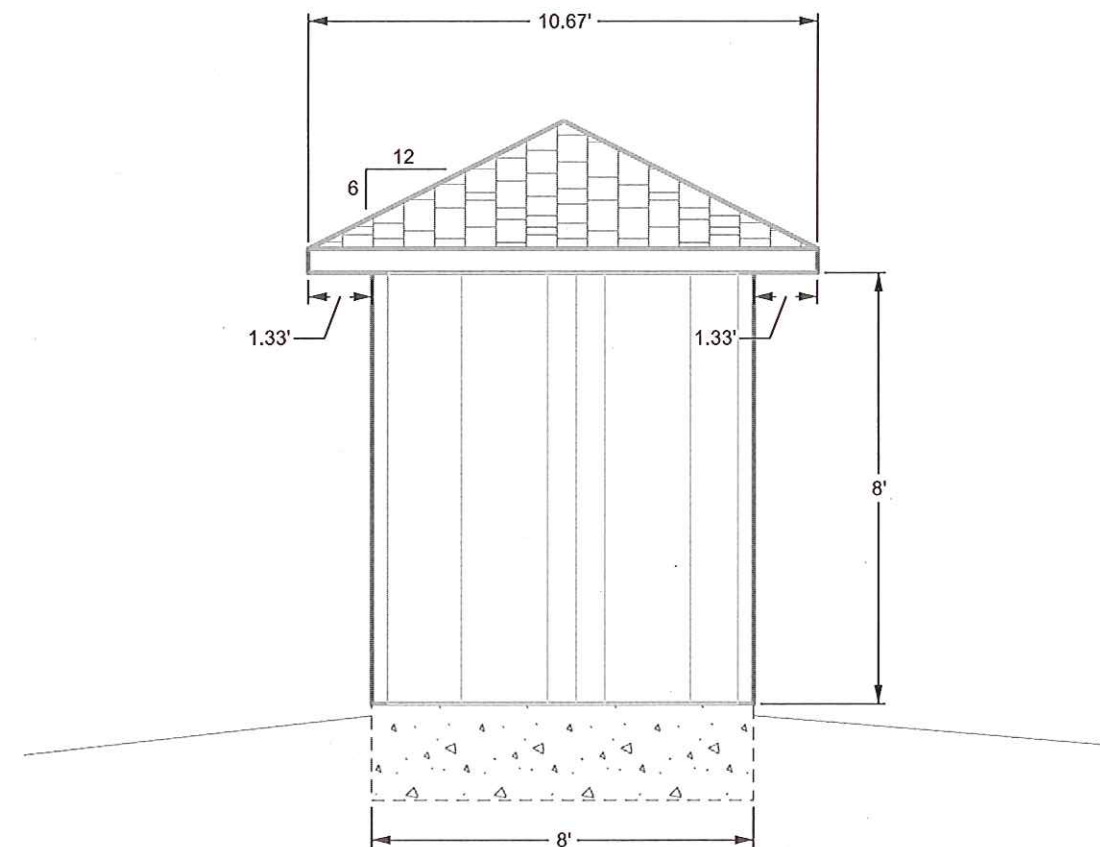
NORTH ELEVATION



EAST ELEVATION



SOUTH ELEVATION



WEST ELEVATION

