

# STUDENT APARTMENTS

## STUDENT APARTMENTS

529 UNIVERSITY AVE.  
 MADISON, WI  
 THE CAREY GROUP REAL ESTATE SERVICES, LLC.  
 901 DEMING WAY, SUITE 102  
 MADISON, WI 53717

ISSUE DATES:	Issue Description	Date
1/17	LOGO USE SUB. #1	01/26/24

**PRELIMINARY  
 NOT FOR  
 CONSTRUCTION**

This document contains confidential or proprietary information of Iconica. Neither the document nor the information herein is to be reproduced, distributed, used or disclosed, either in whole or in part, except as specifically authorized by Iconica.

Sheet Title:  
**COVER SHEET**

Project Number: 20220300  
 Sheet Number

**G001**

### BUILDING CODE

### BID PACKAGES

### SITE LOCATION MAP



PROJECT LOCATION

529 UNIVERSITY AVE.  
 MADISON, WI

### PROJECT DIRECTORY

**OWNER:**  
 THE CAREY GROUP REAL ESTATE SERVICES, LLC.  
 901 DEMING WAY, SUITE 102  
 MADISON, WI 53717

**REAL ESTATE ASSOCIATES, INC.:**  
 800 UNIVERSITY SUITE 201  
 MADISON, WI 53717

**ARCHITECTURE & ENGINEERING:**  
 ICONICA, INC.  
 901 DEMING WAY, SUITE 102  
 MADISON, WI 53717

**LANDSCAPE DESIGNER:**  
 ARCHITECTURE + PLANNING, LLC  
 901 DEMING WAY, SUITE 201  
 MADISON, WI 53717

### SHEET INDEX

DATE	BY	TITLE
1/17	ES	COVER SHEET

Code	Description
ES	ESTIMATES
ES-1	ESTIMATED
ES-2	ESTIMATED
ES-3	ESTIMATED
ES-4	ESTIMATED
ES-5	ESTIMATED
ES-6	ESTIMATED
ES-7	ESTIMATED
ES-8	ESTIMATED
ES-9	ESTIMATED
ES-10	ESTIMATED
ES-11	ESTIMATED
ES-12	ESTIMATED
ES-13	ESTIMATED
ES-14	ESTIMATED
ES-15	ESTIMATED
ES-16	ESTIMATED
ES-17	ESTIMATED
ES-18	ESTIMATED
ES-19	ESTIMATED
ES-20	ESTIMATED
ES-21	ESTIMATED
ES-22	ESTIMATED
ES-23	ESTIMATED
ES-24	ESTIMATED
ES-25	ESTIMATED
ES-26	ESTIMATED
ES-27	ESTIMATED
ES-28	ESTIMATED
ES-29	ESTIMATED
ES-30	ESTIMATED
ES-31	ESTIMATED
ES-32	ESTIMATED
ES-33	ESTIMATED
ES-34	ESTIMATED
ES-35	ESTIMATED
ES-36	ESTIMATED
ES-37	ESTIMATED
ES-38	ESTIMATED
ES-39	ESTIMATED
ES-40	ESTIMATED
ES-41	ESTIMATED
ES-42	ESTIMATED
ES-43	ESTIMATED
ES-44	ESTIMATED
ES-45	ESTIMATED
ES-46	ESTIMATED
ES-47	ESTIMATED
ES-48	ESTIMATED
ES-49	ESTIMATED
ES-50	ESTIMATED
ES-51	ESTIMATED
ES-52	ESTIMATED
ES-53	ESTIMATED
ES-54	ESTIMATED
ES-55	ESTIMATED
ES-56	ESTIMATED
ES-57	ESTIMATED
ES-58	ESTIMATED
ES-59	ESTIMATED
ES-60	ESTIMATED
ES-61	ESTIMATED
ES-62	ESTIMATED
ES-63	ESTIMATED
ES-64	ESTIMATED
ES-65	ESTIMATED
ES-66	ESTIMATED
ES-67	ESTIMATED
ES-68	ESTIMATED
ES-69	ESTIMATED
ES-70	ESTIMATED
ES-71	ESTIMATED
ES-72	ESTIMATED
ES-73	ESTIMATED
ES-74	ESTIMATED
ES-75	ESTIMATED
ES-76	ESTIMATED
ES-77	ESTIMATED
ES-78	ESTIMATED
ES-79	ESTIMATED
ES-80	ESTIMATED
ES-81	ESTIMATED
ES-82	ESTIMATED
ES-83	ESTIMATED
ES-84	ESTIMATED
ES-85	ESTIMATED
ES-86	ESTIMATED
ES-87	ESTIMATED
ES-88	ESTIMATED
ES-89	ESTIMATED
ES-90	ESTIMATED
ES-91	ESTIMATED
ES-92	ESTIMATED
ES-93	ESTIMATED
ES-94	ESTIMATED
ES-95	ESTIMATED
ES-96	ESTIMATED
ES-97	ESTIMATED
ES-98	ESTIMATED
ES-99	ESTIMATED
ES-100	ESTIMATED









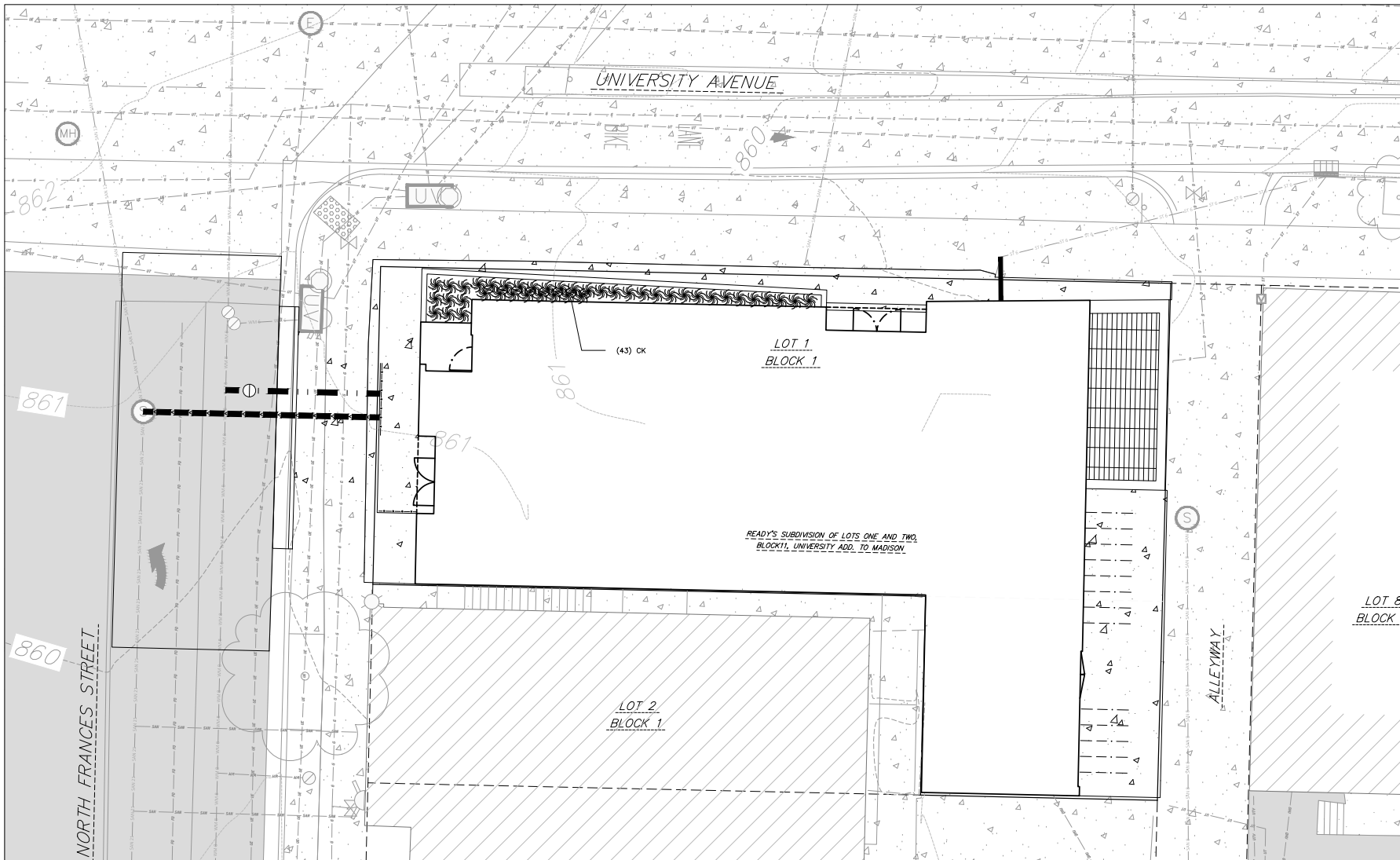












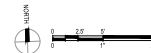
**PLANT MATERIAL NOTES:**

1. ALL PLANTINGS SHALL CONFORM TO QUALITY REQUIREMENTS AS PER ANSI Z60.1.
2. ALL PLANT MATERIAL SHALL BE TRUE TO SPECIES, VARIETY AND SIZE SPECIFIED, NURSERY GROWN IN ACCORDANCE WITH GOOD HORTICULTURAL PRACTICES, AND UNDER CLIMATIC CONDITIONS SIMILAR TO THOSE OF THE PROJECT SITE.
3. CONTACT LANDSCAPE ARCHITECT, IN WRITING, TO REQUEST ANY PLANT MATERIAL SUBSTITUTIONS DUE TO AVAILABILITY ISSUES.
4. ALL PLANTS SHALL BE GUARANTEED TO BE IN HEALTHY AND FLOURISHING CONDITION DURING THE GROWING SEASON FOLLOWING INSTALLATION. ALL PLANT MATERIAL SHALL BE GUARANTEED FOR ONE YEAR FROM THE TIME OF INSTALLATION.

**LANDSCAPE MATERIAL NOTES:**

1. CONTRACTOR SHALL PROVIDE A SUITABLE AMENDED TOPSOIL BLEND FOR ALL PLANTING AREAS WHERE SOIL CONDITIONS ARE UNSUITABLE FOR PLANT GROWTH. TOPSOIL SHALL CONFORM TO QUALITY REQUIREMENTS AS PER SECTION 625.2(1) OF THE "STANDARD SPECIFICATIONS FOR HIGHWAY CONSTRUCTION." PROVIDE A MINIMUM OF 18" OF TOPSOIL IN ALL PLANTING AREAS AND 6" OF TOPSOIL IN AREAS TO BE SEEDDED/SOODED.
2. REMOVE CONSTRUCTION BRACKLE IN ALL PLANTING AREA PRIOR TO IMPORT OF TOPSOIL AND INSTALLATION OF PLANTS.
3. LANDSCAPE BEDS TO BE MULCHED WITH UNDEYD SHREDDED HARDWOOD BARK MULCH TO 3" DEPTH MIN. AND EDGED WITH COMMERCIAL GRADE ALUMINUM LANDSCAPE EDGING, PERMALOC CLEANLINE 2"x4" OR EQUAL, COLOR BLACK ANODIZED.

SYMB	QUANTITY	SIZE	STOCK TYPE	COMMON NAME	BOTANICAL NAME
CK	43	1 GAL	POT	Karl Foerster Feather Reed Grass	Calamagrostis x ouillonis 'Karl Foerster'



**STUDENT APARTMENTS**

NOT FOR CONSTRUCTION  
 THE CAREY GROUP REAL ESTATE SERVICES, LLC.  
 529 UNIVERSITY AVE.  
 MADISON, WI  
 901 DENINGWAY SUITE 102  
 MADISON, WI 53717

**ISSUE DATES:**  
 Issue: \_\_\_\_\_ Description: \_\_\_\_\_ Date: \_\_\_\_\_  
 001 LAND USE SUB. #1 09-20-24

**PRELIMINARY NOT FOR CONSTRUCTION**

This document contains confidential or proprietary information of Iconica. Neither the document nor the information herein is to be reproduced, distributed, used or disclosed, either in whole or in part, except as specifically authorized by Iconica.

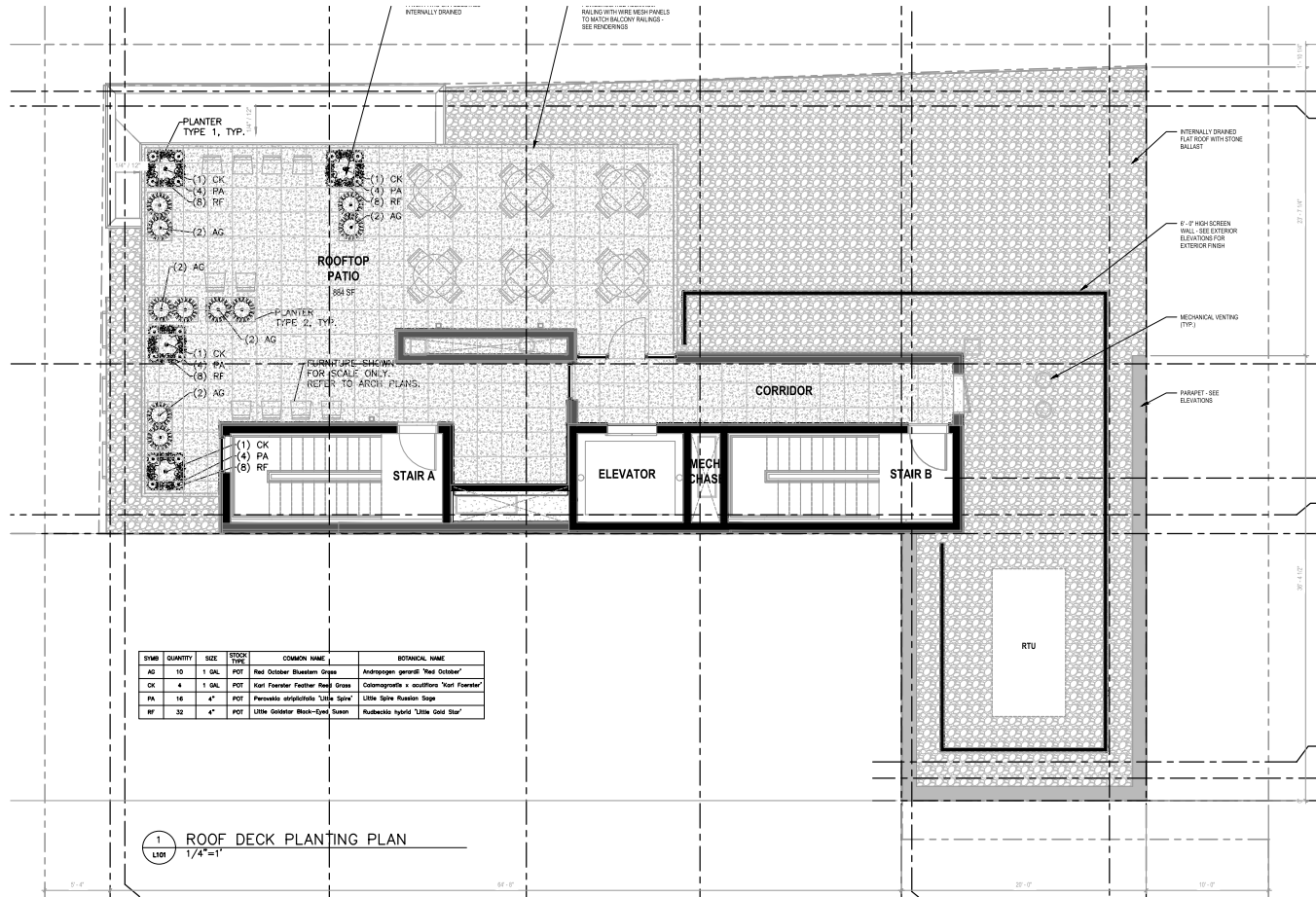
Sheet Title:  
**PRELIMINARY SITE PLAN LANDSCAPE**

Project Number: 20220300

Sheet Number:

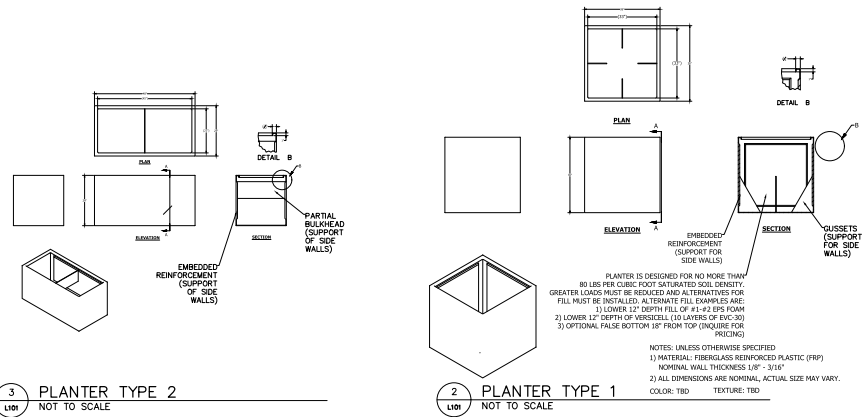
**L100**

Scale: 1/8" = 1'-0" (As Shown on Previous Record)



SYMB	QUANTITY	SIZE	STOCK	COMMON NAME	SCIENTIFIC NAME
AG	10	1 GAL	POT	Red October Bluestem Grass	<i>Andropogon gerardii</i> 'Red October'
CK	4	1 GAL	POT	Karl Foerster Feather Reed Grass	<i>Calamagrostis x acutiflora</i> 'Karl Foerster'
PA	16	4"	POT	Parsonsia stricticulis 'Little Spire'	<i>Little Spire Russian Sage</i>
RF	32	4"	POT	Little Goldstar Black-Twig Sasan	<i>Rubuschlo 'Little Gold Star'</i>

1 ROOF DECK PLANTING PLAN  
1/4"=1'



3 PLANTER TYPE 2  
NOT TO SCALE

2 PLANTER TYPE 1  
NOT TO SCALE

- PLANT MATERIAL NOTES:**
1. ALL PLANTINGS SHALL CONFORM TO QUALITY REQUIREMENTS AS PER ANSI Z60.1.
  2. ALL PLANT MATERIAL SHALL BE TRUE TO SPECIES, VARIETY AND SIZE SPECIFIED. NURSERY GROWN IN ACCORDANCE WITH GOOD HORTICULTURAL PRACTICES, AND UNDER CLIMATIC CONDITIONS SIMILAR TO THOSE OF THE PROJECT SITE.
  3. CONTACT LANDSCAPE ARCHITECT, IN WRITING, TO REQUEST ANY PLANT MATERIAL SUBSTITUTIONS DUE TO AVAILABILITY ISSUES.
  4. ALL PLANTS SHALL BE GUARANTEED TO BE IN HEALTHY AND FLOURISHING CONDITION DURING THE GROWING SEASON FOLLOWING INSTALLATION. ALL PLANT MATERIAL SHALL BE GUARANTEED FOR ONE YEAR FROM THE TIME OF INSTALLATION.

- LANDSCAPE MATERIAL NOTES:**
1. CONTRACTOR SHALL PROVIDE A SUITABLE AMENDED TOPSOIL BLEND FOR ALL PLANTING AREAS WHERE SOIL CONDITIONS ARE UNSUITABLE FOR PLANT GROWTH. TOPSOIL SHALL CONFORM TO QUALITY REQUIREMENTS AS PER SECTION 625.2(1) OF THE "STANDARD SPECIFICATIONS FOR HIGHWAY CONSTRUCTION". PROVIDE A MINIMUM OF 18" OF TOPSOIL IN ALL PLANTING AREAS AND 6" OF TOPSOIL IN AREAS TO BE SEED/SODDED.
  2. REMOVE CONSTRUCTION BAKENITE IN ALL PLANTING AREA PRIOR TO IMPORT OF TOPSOIL AND INSTALLATION OF PLANTS.
  3. LANDSCAPE BEDS TO BE MULCHED WITH UNDYED SHREDED HARDWOOD BARK MULCH TO 3" DEPTH MIN. AND EDGED WITH COMMERCIAL GRADE ALUMINUM LANDSCAPE EDGING, PERMALOC CLEANLINE 4"x4" OR EQUAL, COLOR BLACK ANODIZED.

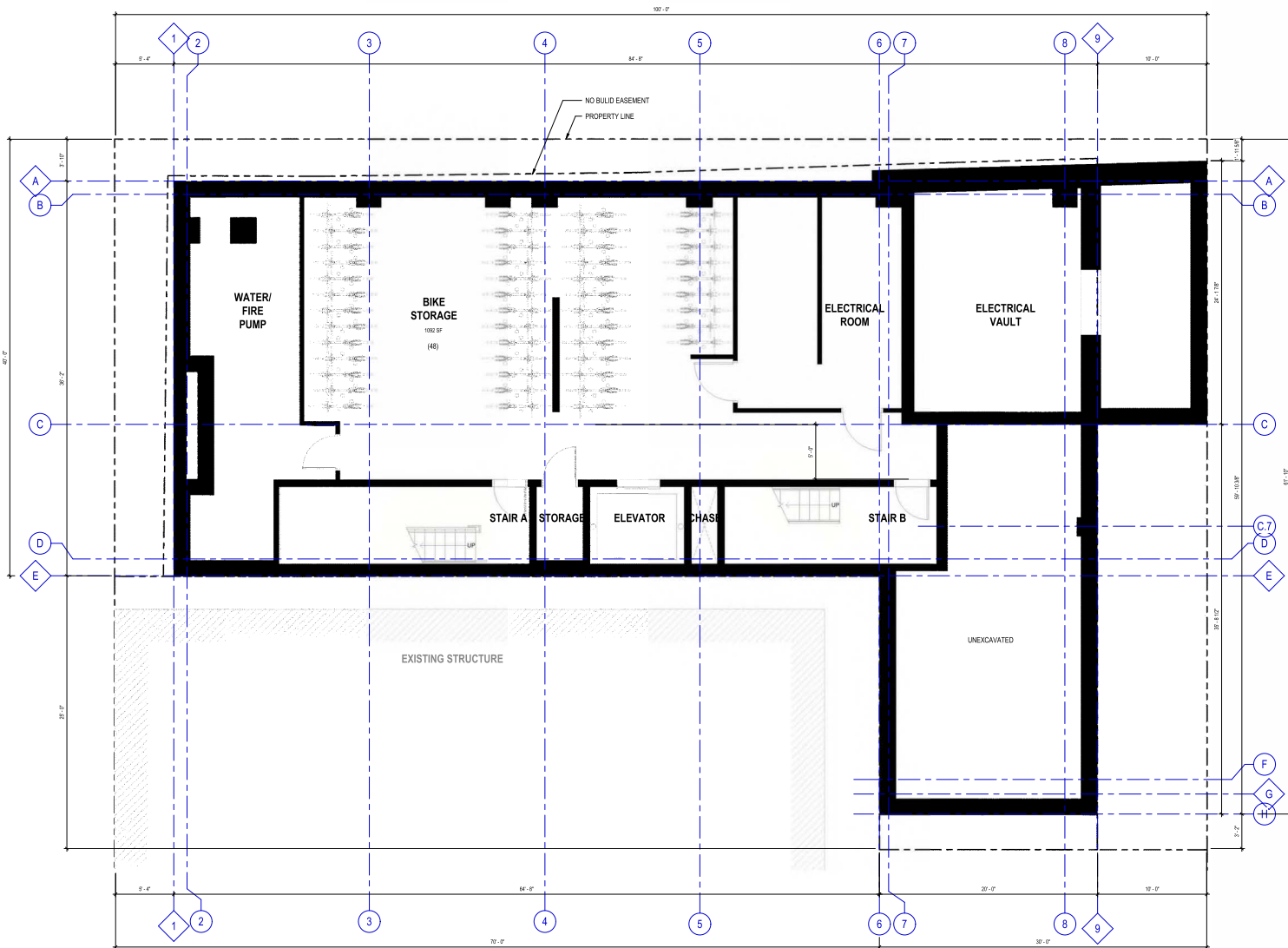


**ISSUE DATES**

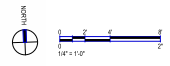
Issue	Description	Date
001	LANDSCAPE DESIGN #1	07/12/2020

PRELIMINARY  
NOT FOR  
CONSTRUCTION

This document contains confidential or proprietary information of Iconica. Neither the document nor the information herein is to be reproduced, distributed, used or disclosed, either in whole or in part, except as specifically authorized by Iconica.



**PRELIMINARY FLOOR PLAN - LOWER LEVEL**  
1/8" = 1'-0"



**STUDENT APARTMENTS**  
520 UNIVERSITY AVE.  
MADISON, WI  
THE CAREY GROUP REAL ESTATE SERVICES, LLC.  
901 DEMING WAY, SUITE 102  
MADISON, WI 53717

ISSUE DATES:

Issue	Description	Date
1ST	LAND USE SUB #1	07-28-24

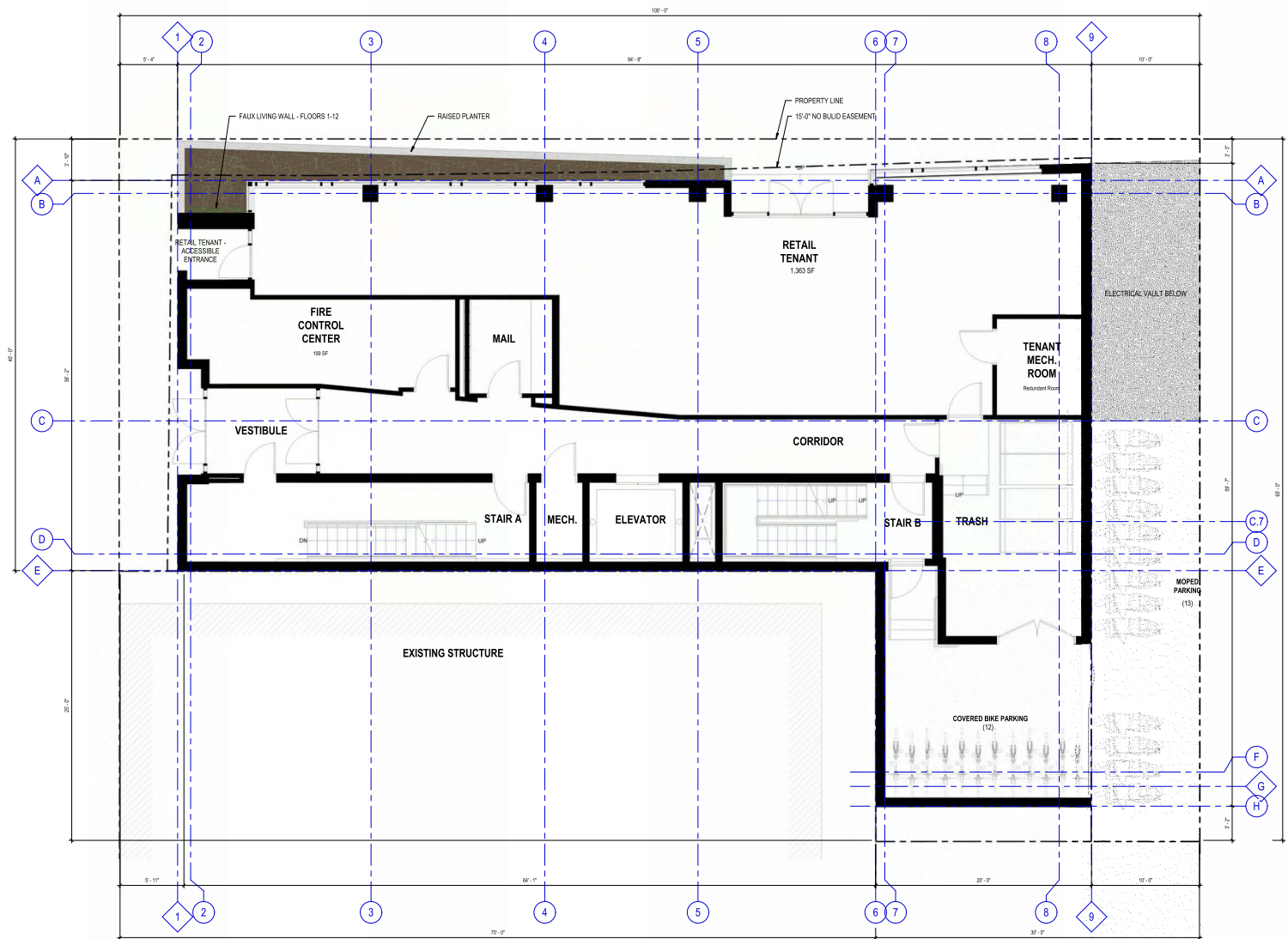
**PRELIMINARY  
NOT FOR  
CONSTRUCTION**

This document contains confidential or proprietary information of Iconica. Neither the document nor the information herein is to be reproduced, distributed, used or disclosed, either in whole or in part, except as specifically authorized by Iconica.

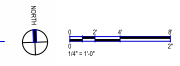
Sheet Title:  
**PRELIMINARY  
FLOOR PLAN -  
LOWER LEVEL**

Project Number: 20220300  
Sheet Number

**Z200**



**PRELIMINARY FLOOR PLAN - LEVEL 1**  
 1/8" = 1'-0"



**STUDENT APARTMENTS**

520 UNIVERSITY AVE.  
 MADISON, WI  
 THE CAREY GROUP REAL ESTATE SERVICES, LLC.  
 901 DEMING WAY, SUITE 102  
 MADISON, WI 53717

ISSUE DATES:

Issue	Description	Date
1ST	LAND USE SUB #1	07-28-24

**PRELIMINARY  
 NOT FOR  
 CONSTRUCTION**

This document contains confidential or proprietary information of Iconica. Neither the document nor the information herein is to be reproduced, distributed, used or disclosed, either in whole or in part, except as specifically authorized by Iconica.

Sheet Title:  
**PRELIMINARY  
 FLOOR PLAN -  
 LEVEL 1**

Project Number: 20220300  
 Sheet Number

**Z201**



**STUDENT APARTMENTS**

520 UNIVERSITY AVE.  
 MADISON, WI  
 THE CAREY GROUP REAL ESTATE SERVICES, LLC.  
 901 DEMING WAY, SUITE 102  
 MADISON, WI 53717

ISSUE DATES:

Issue	Description	Date
IST	LAND USE SUB #1	07-28-24

**PRELIMINARY  
 NOT FOR  
 CONSTRUCTION**

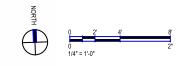
This document contains confidential or proprietary information of Iconica. Neither the document nor the information herein is to be reproduced, distributed, used or disclosed, either in whole or in part, except as specifically authorized by Iconica.

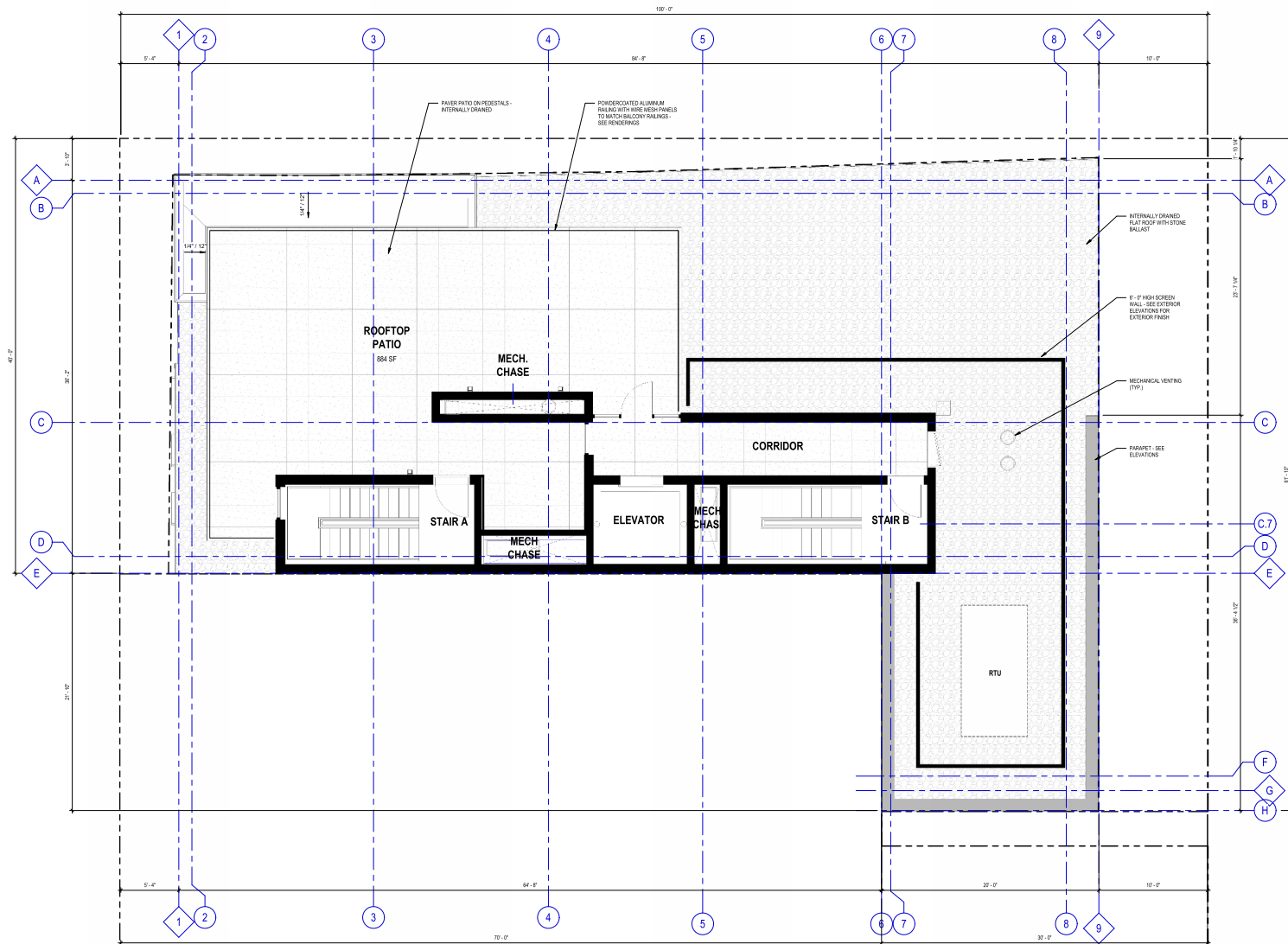
Sheet Title:  
**PRELIMINARY  
 FLOOR PLAN -  
 LEVEL 2 - 12**

Project Number: 20220300  
 Sheet Number

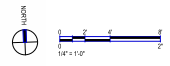
**Z202**

**PRELIMINARY FLOOR PLAN - LEVEL 2 - 12**  
 1/4" = 1'-0"





**PRELIMINARY ROOF PLAN - LEVEL 13**  
 1/4" = 1'-0"



**STUDENT APARTMENTS**

550 UNIVERSITY AVE.  
 MADISON, WI  
 THE CAREY GROUP REAL ESTATE SERVICES, LLC.  
 901 DEMING WAY, SUITE 102  
 MADISON, WI 53717

ISSUE DATES:

Issue	Description	Date
1ST	LAND USE SUB #1	07-28-24

**PRELIMINARY NOT FOR CONSTRUCTION**

This document contains confidential or proprietary information of Iconica. Neither the document nor the information herein is to be reproduced, distributed, used or disclosed, either in whole or in part, except as specifically authorized by Iconica.

Sheet Title:  
**PRELIMINARY ROOF PLAN**

Project Number: 20220300  
 Sheet Number

**Z213**



**EXTERIOR MATERIAL LEGEND:**

	<b>COMPOSITE HPL PANEL (FLOOR 2-12)</b> SWISS FACTORY FINGERMAX PRODUCT: VERT. 48" x 48" PANEL COLOR: BONE WHITE INSTALL: EXPOSED COLOR MATCHED RIVET		<b>COMPOSITE HPL PANEL</b> SWISS FACTORY FINGERMAX PRODUCT: HORIZ. PANEL 48" x 48" x 1/8" COLOR: BONE WHITE INSTALL: EXPOSED COLOR MATCHED RIVET
	<b>METAL PANEL (FLOOR 1)</b> SWISS FACTORY ALPOLC PRODUCT: VERT. 48" x 48" PANEL COLOR: BONE WHITE INSTALL: CONCEALED FASTENER		<b>COMPOSITE HPL PANEL</b> SWISS FACTORY FINGERMAX PRODUCT: VERT. 8" x 36" PANEL - STAGGERED JOINTS COLOR: BONE WHITE INSTALL: CONCEALED FASTENER
	<b>METAL PANEL</b> SWISS FACTORY ALPOLC PRODUCT: HORIZ. 24" x 48" PANEL COLOR: BONE WHITE INSTALL: CONCEALED FASTENER		<b>METAL PANEL BOOTTOP MECHANICAL SCREENING</b> SWISS FACTORY FINGERMAX PRODUCT: 7/8" CORRUGATED PANEL, 24 GA. COLOR: BLACK INSTALL: EXPOSED COLOR MATCHED RIVET
	<b>COMPOSITE HPL PANEL</b> SWISS FACTORY FINGERMAX PRODUCT: VERT. 12" x 48" PANEL COLOR: BONE WHITE INSTALL: CONCEALED FASTENER		<b>PREPARED PVC SCREENING</b> SWISS FACTORY FINGERMAX PRODUCT: POWDERCOATED AL. 37" x 118" PANEL, 5/8" DIA. HOLES COLOR: BONE WHITE (BLACK TO MATCH ADJACENT PANEL) INSTALL: 1" STANDOFFS OVER COMPOSITE PANEL

**GENERAL NOTES:**

1. ALL GLAZING TO RECEIVE ANODIZED ALUMINUM FRAMES AND MULLIONS
2. ALL BALCONY RAILINGS TO RECEIVE WELDED WIRE MESH WITH CUSTOM SQUARE TUBE POWDERCOATED FRAME, BLACK TO MATCH BLACK METAL PANEL
3. PREFINISHED METAL CLOSURE SOFFIT PANEL AT UNDERSIDE AND PERIMETER OF BALCONIES



911 DEMING WAY, SUITE 102 | MADISON, WI 53717  
PH: 608.209.7744 | WWW.ICONICA.COM

**STUDENT APARTMENTS**  
520 UNIVERSITY AVE.  
MADISON, WI

**THE CAREY GROUP REAL ESTATE SERVICES, LLC.**  
901 DEMING WAY, SUITE 102  
MADISON, WI 53717

**ISSUE DATES:**

Issue	Description	Date
1ST	LAND USE SUB #1	07-28-24

**PRELIMINARY NOT FOR CONSTRUCTION**

This document contains confidential or proprietary information of Iconica. Neither the document nor the information herein is to be reproduced, distributed, used or disclosed, either in whole or in part, except as specifically authorized by Iconica.

Sheet Title: **PRELIMINARY EXTERIOR ELEVATIONS**  
Project Number: 20220300  
Sheet Number: **Z301**

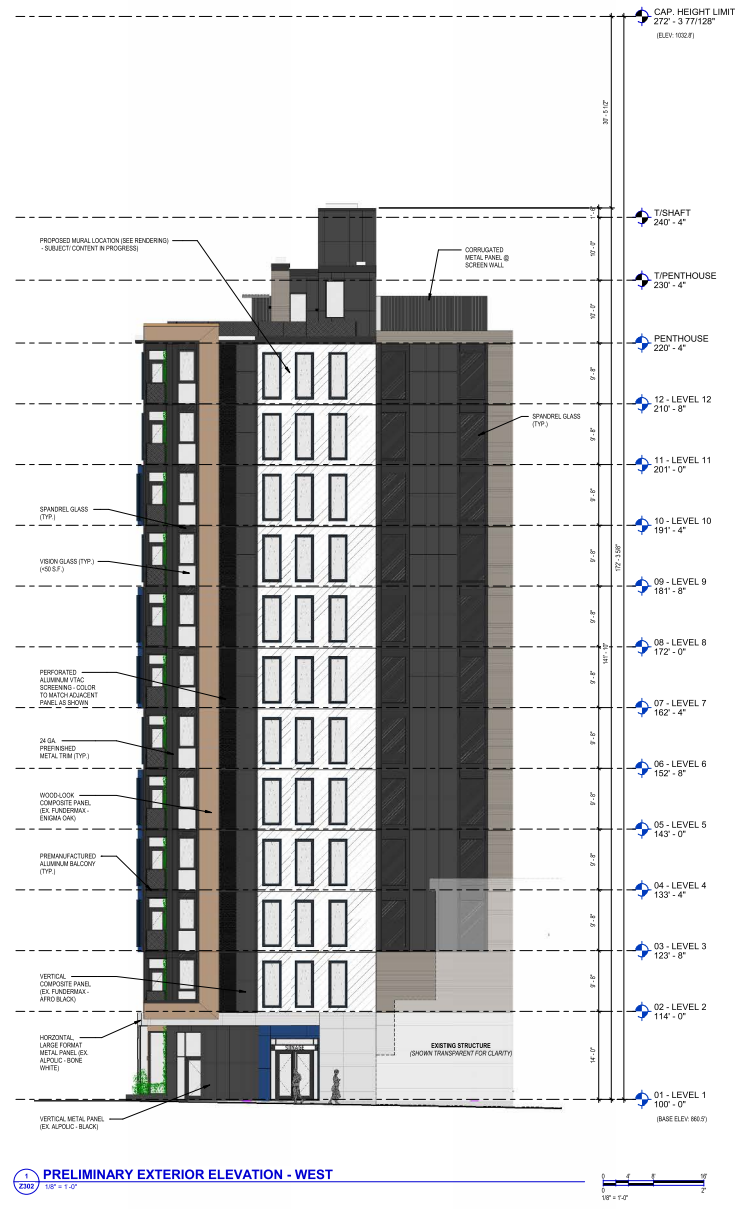


**EXTERIOR MATERIAL LEGEND:**

	COMPOSITE HPL PANEL MANUFACTURER: FORDERMAX PRODUCT: VENT, 12" x 48" PANEL COLOR: AFRO BLACK, NT MATTE INSTALL: EXPOSED COLOR MATCHED JOINT		COMPOSITE HPL PANEL MANUFACTURER: FORDERMAX PRODUCT: VENT, 12" x 48" PANEL COLOR: NIGHT BLUE, NT MATTE INSTALL: CONCEALED FASTENER
	METAL PANEL (FLOOR 1) MANUFACTURER: ALPOLIC PRODUCT: VENT, 12" x 48" PANEL COLOR: BLACK, ANVISED INSTALL: CONCEALED FASTENER		COMPOSITE HPL PANEL MANUFACTURER: FORDERMAX PRODUCT: VENT, 12" x 48" PANEL COLOR: ENIGMA OAK, NT MATTE INSTALL: CONCEALED FASTENER
	METAL PANEL MANUFACTURER: ALPOLIC PRODUCT: VENT, 12" x 48" PANEL COLOR: BONE WHITE INSTALL: CONCEALED FASTENER		COMPOSITE HPL PANEL MANUFACTURER: FORDERMAX PRODUCT: VENT, 12" x 48" PANEL COLOR: ENIGMA OAK, NT MATTE INSTALL: CONCEALED FASTENER
	COMPOSITE HPL PANEL MANUFACTURER: FORDERMAX PRODUCT: VENT, 12" x 48" PANEL COLOR: NIGHT BLUE, NT MATTE INSTALL: CONCEALED FASTENER		COMPOSITE HPL PANEL MANUFACTURER: FORDERMAX PRODUCT: VENT, 12" x 48" PANEL COLOR: ENIGMA OAK, NT MATTE INSTALL: CONCEALED FASTENER

**GENERAL NOTES:**

1. ALL GLAZING TO RECEIVE ANODIZED ALUMINUM FRAMES AND MULLIONS
2. ALL BALCONY RAILINGS TO RECEIVE WELDED WIRE REINFORCED CUSTOM SQUARE TUBE POWDERCOATED FRAME - BLACK TO MATCH BLACK METAL PANEL
3. PREFINISHED METAL CURBSIDE RIBBIT PANEL AT UNDERSEAL AND PERIMETER OF BALCONIES



**PRELIMINARY EXTERIOR ELEVATION - WEST**

**ICONICA**  
911 DEMING WAY, SUITE 102 | MADISON, WI 53717  
PH: 608.209.7744 | WWW.ICONICA.COM

**STUDENT APARTMENTS**  
520 UNIVERSITY AVE. | MADISON, WI  
THE CAREY GROUP REAL ESTATE SERVICES, LLC.  
901 DEMING WAY, SUITE 102 | MADISON, WI 53717

**ISSUE DATES:**  
Issue Description Date  
1ST LAND USE SUB #1 07-28-24

**PRELIMINARY NOT FOR CONSTRUCTION**

This document contains confidential or proprietary information of Iconica. Neither the document nor the information herein is to be reproduced, distributed, used or disclosed, either in whole or in part, except as specifically authorized by Iconica.

Sheet Title: **PRELIMINARY EXTERIOR ELEVATIONS**  
Project Number: 20220300  
Sheet Number: **Z302**





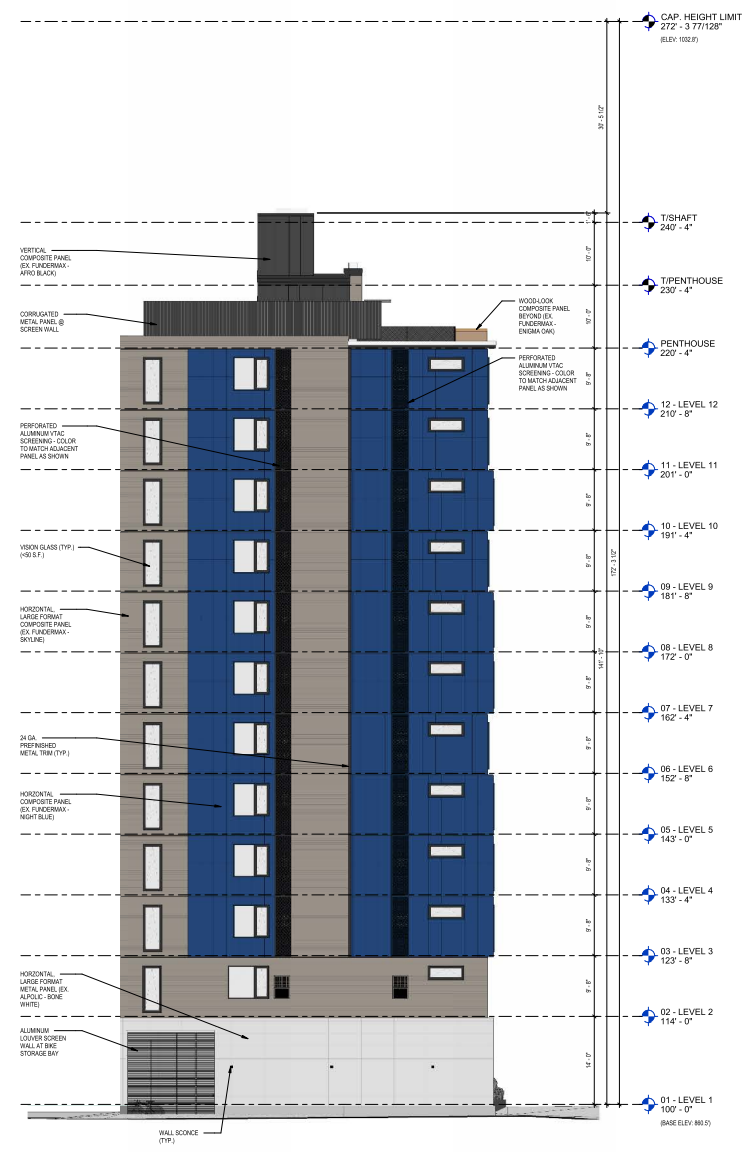


**EXTERIOR MATERIAL LEGEND:**

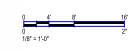
<b>COMPOSITE VTL PANEL (FLOORS 3-12)</b> MANUFACTURER: FUNKERMAX PRODUCT: VISION PANEL, 12" X 48" AND 12" X 48" COLOR: BONE, NT MATTE METAL: EXPOSED COLOR MATCHED RIVET	<b>COMPOSITE VTL PANEL</b> MANUFACTURER: FUNKERMAX PRODUCT: VISION PANEL, 12" X 48" AND 12" X 48" COLOR: BONE, NT MATTE METAL: EXPOSED COLOR MATCHED RIVET
<b>METAL PANEL (FLOOR 1)</b> MANUFACTURER: ALPOLC PRODUCT: VISION PANEL, 12" X 48" PANEL COLOR: BLACK, ANODIZED METAL: CONCEALED FASTENER	<b>COMPOSITE VTL PANEL</b> MANUFACTURER: FUNKERMAX PRODUCT: VISION PANEL, 12" X 48" AND 12" X 48" COLOR: BONE, NT MATTE METAL: EXPOSED COLOR MATCHED RIVET
<b>METAL PANEL</b> MANUFACTURER: ALPOLC PRODUCT: VISION PANEL, 12" X 48" PANEL COLOR: BONE, WHITE METAL: CONCEALED FASTENER	<b>COMPOSITE VTL PANEL</b> MANUFACTURER: FUNKERMAX PRODUCT: VISION PANEL, 12" X 48" AND 12" X 48" COLOR: BONE, NT MATTE METAL: CONCEALED FASTENER
<b>COMPOSITE VTL PANEL</b> MANUFACTURER: FUNKERMAX PRODUCT: VISION PANEL, 12" X 48" AND 12" X 48" COLOR: NIGHT BLUE, NT MATTE METAL: CONCEALED FASTENER	<b>PERFORATED VTL SCREENING</b> MANUFACTURER: FUNKERMAX PRODUCT: PERFORATED VTL PANEL, 12" X 48" HOLES COLOR: NIGHT BLUE, BLACK (TO MATCH ADJACENT PANEL) METAL: 1" STANDOFFS OVER COMPOSITE PANEL

**GENERAL NOTES:**

1. ALL GLAZING TO RECEIVE ANODIZED ALUMINUM FRAMES AND MULLIONS
2. ALL BALCONY RAILINGS TO RECEIVE WELDED WIRE WITH CUSTOM SQUARE TUBE PERFORATED FRAME - BLACK (TO MATCH BLACK METAL PANEL)
3. PREFINISHED METAL CLADDING: SORTI PANEL AT KITCHEN AND PERIMETER OF BALCONIES



**1 PRELIMINARY EXTERIOR ELEVATION - EAST**



**STUDENT APARTMENTS**

520 UNIVERSITY AVE.  
MADISON, WI  
THE CAREY GROUP REAL ESTATE SERVICES, LLC.  
901 DEMING WAY, SUITE 102  
MADISON, WI 53717

**ISSUE DATES:**

Issue	Description	Date
1ST	LAND USE SUB #1	07-28-24

**PRELIMINARY NOT FOR CONSTRUCTION**

This document contains confidential or proprietary information of Iconica. Neither the document nor the information herein is to be reproduced, distributed, used or disclosed, either in whole or in part, except as specifically authorized by Iconica.

Sheet Title:  
**PRELIMINARY EXTERIOR ELEVATIONS**  
Project Number: 20220300  
Sheet Number

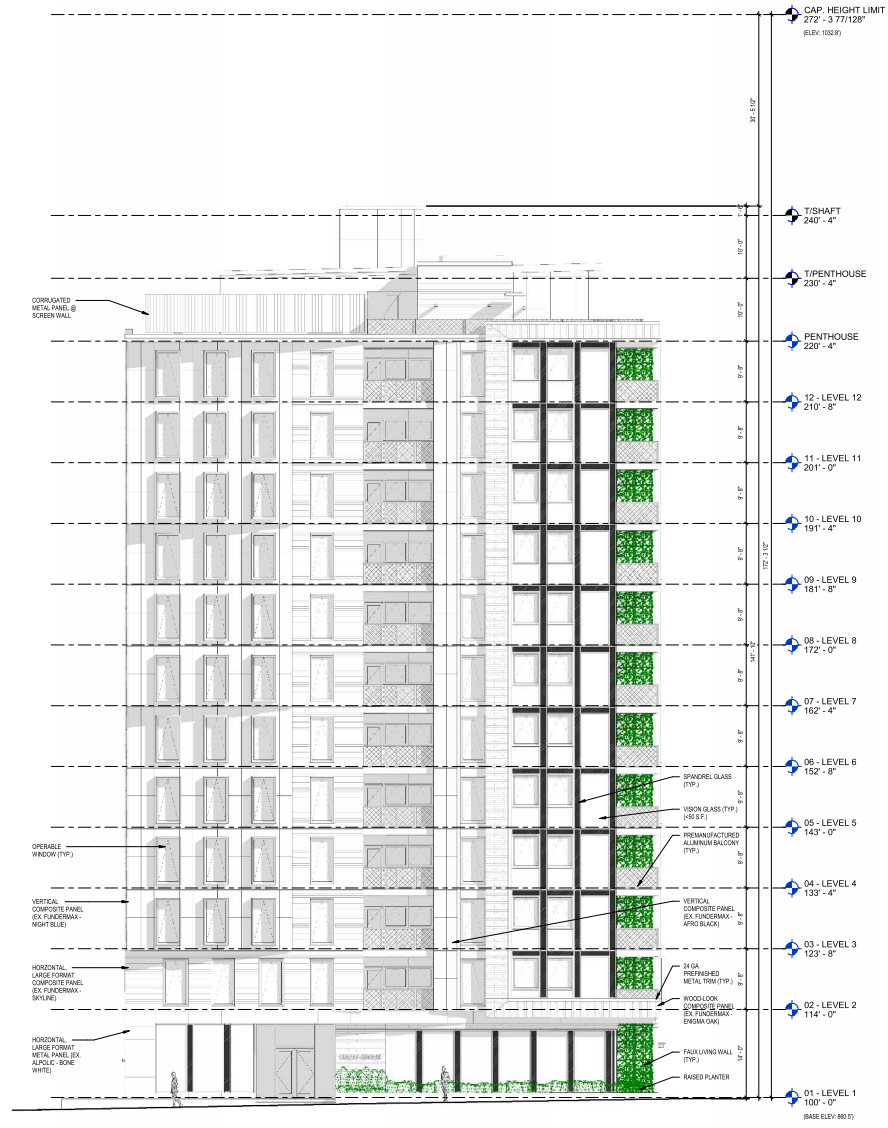
**Z304**

**EXTERIOR MATERIAL LEGEND:**

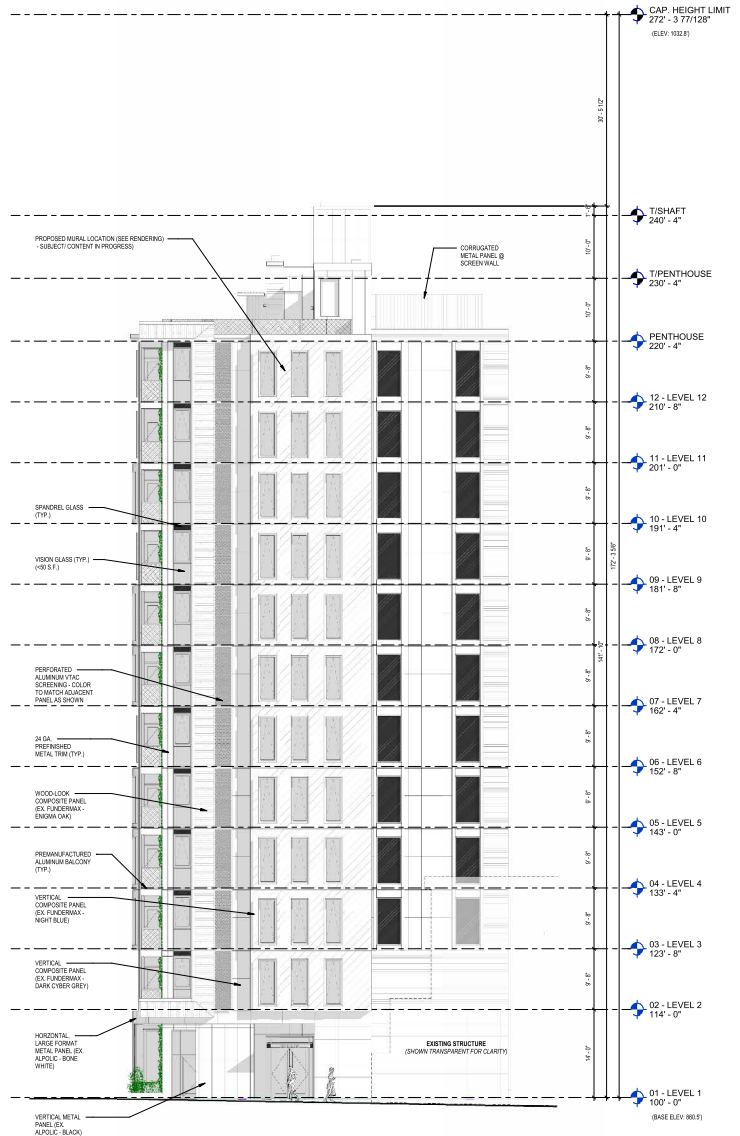
<p><b>COMPOSITE W/P PANEL (CONCRETE)</b> MANUFACTURER: FINDERMAX PRODUCT: VERT. 1/2" W/P PANEL COLOR: APOLO BLACK, NT MATTE INSTALL: EXPOSED COLOR MATCHED RIVET</p> <p><b>METAL PANEL (FLOOR 1)</b> MANUFACTURER: ALPOLIC PRODUCT: VERT. 1/2" W/P PANEL COLOR: BLACK ANODIZED INSTALL: CONCEALED FASTENER</p> <p><b>METAL PANEL</b> MANUFACTURER: ALPOLIC PRODUCT: VERT. 1/2" W/P PANEL COLOR: BONE WHITE INSTALL: CONCEALED FASTENER</p>	<p><b>COMPOSITE W/P PANEL (WOOD)</b> MANUFACTURER: FINDERMAX PRODUCT: HORIZ. PANEL - 4" x 8" AND 1/2" x 8" COLOR: SKYLINE, NT SKY FINISH (STONE TEXTURE) INSTALL: EXPOSED COLOR MATCHED RIVET</p> <p><b>COMPOSITE W/P PANEL</b> MANUFACTURER: FINDERMAX PRODUCT: VERT. 1/2" W/P PANEL - STAGGERED JOINTS COLOR: FINISH OAK, NT MATTE INSTALL: CONCEALED FASTENER</p> <p><b>METAL PANEL (ROOF) MECHANICAL SCREENING</b> MANUFACTURER: PRO-CURVE PRODUCT: 1/2" CORRUGATED PANEL, 1/2" GA COLOR: BLACK INSTALL: EXPOSED COLOR MATCHED RIVET</p>	<p><b>COMPOSITE W/P PANEL</b> MANUFACTURER: FINDERMAX PRODUCT: VERT. 1/2" W/P PANEL COLOR: NIGHT BLUE, NT MATTE INSTALL: CONCEALED FASTENER</p> <p><b>PERFORATED ALUM. VTC SCREENING</b> MANUFACTURER: HENCKS MANUFACTURING PRODUCT: POWDERCOATED AL. 30" x 118" PANEL, 1/2" DIA. HOLES COLOR: NIGHT BLUE &amp; BLACK TO MATCH ADJACENT PANEL INSTALL: 1" STAKEOFFS OVER COMPOSITE PANEL</p>
--	--	--

**GENERAL NOTES:**

1. ALL GLAZING TO RECEIVE ANODIZED ALUMINUM FRAMES AND MULLIONS
2. ALL BALCONY RAILINGS TO RECEIVE RIVETED WIRE MESH WITH CUSTOM SQUARE TUBE POWDERCOATED FRAME - BLACK (TO MATCH BLACK METAL PANEL)
3. PREFORMED METAL CLADDING SUPPORT PANEL AT UNDERSIDE AND PERIMETER OF BALCONIES



**PRELIMINARY EXTERIOR ELEVATION - NORTH (B&W)**



**PRELIMINARY EXTERIOR ELEVATION - WEST (B&W)**

**STUDENT APARTMENTS**  
520 UNIVERSITY AVE.  
MADISON, WI  
THE CAREY GROUP REAL ESTATE SERVICES, LLC.  
901 DEMING WAY, SUITE 102  
MADISON, WI 53717

**ISSUE DATES:**

Issue	Description	Date
1ST	LAND USE SUB #1	07-28-24

**PRELIMINARY NOT FOR CONSTRUCTION**

This document contains confidential or proprietary information of Iconica. Neither the document nor the information herein is to be reproduced, distributed, used or disclosed, either in whole or in part, except as specifically authorized by Iconica.

Sheet Title:  
**PRELIMINARY EXTERIOR ELEVATIONS**  
Project Number: 20220300  
Sheet Number

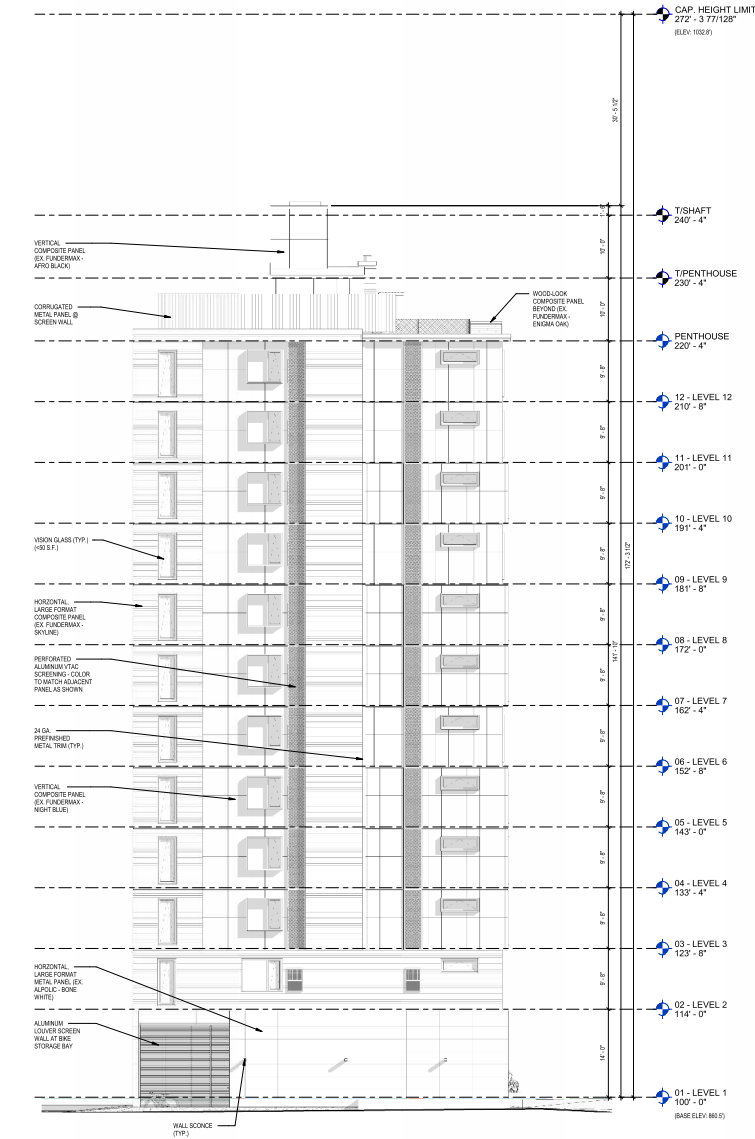
**Z305**

**EXTERIOR MATERIAL LEGEND:**

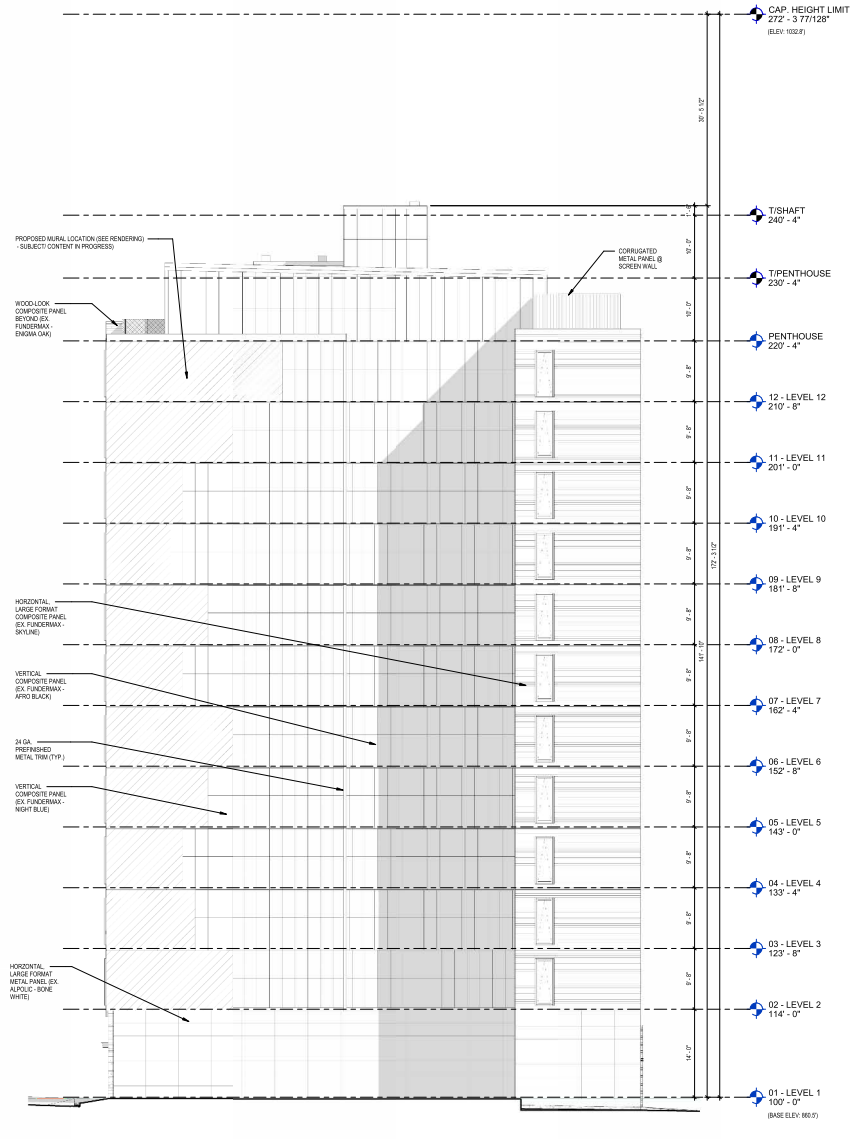
<p><b>COMPOSITE W/P PANEL</b> MANUFACTURER: FINDERMAX PRODUCT: VERT. 12' x 48" PANEL COLOR: APRO BLACK, NT MATTE INSTALL: EXPOSED COLOR MATCHED RIVET</p> <p><b>METAL PANEL (FLOOR 1)</b> MANUFACTURER: ALPOLC PRODUCT: VERT. 12' x 48" PANEL COLOR: BLACK ANODIZED INSTALL: CONCEALED FASTENER</p> <p><b>METAL PANEL</b> MANUFACTURER: ALPOLC PRODUCT: HORIZ. 12' x 48" PANEL COLOR: BONE WHITE INSTALL: CONCEALED FASTENER</p>	<p><b>COMPOSITE W/P PANEL</b> MANUFACTURER: FINDERMAX PRODUCT: HORIZ. 12' x 48" PANEL COLOR: SKYLINE, NT SKY FINISH (STONE TEXTURE) INSTALL: EXPOSED COLOR MATCHED RIVET</p> <p><b>COMPOSITE W/P PANEL</b> MANUFACTURER: FINDERMAX PRODUCT: VERT. 12' x 48" PANEL, STAGGERED JOINTS COLOR: FINGERMAX, NT MATTE INSTALL: CONCEALED FASTENER</p> <p><b>METAL PANEL (ROOF) MECHANICAL SCREENING</b> MANUFACTURER: PRO-COR PRODUCT: 1/2" CORRUGATED PANEL, 24 GA. COLOR: BLACK INSTALL: EXPOSED COLOR MATCHED RIVET</p>	<p><b>COMPOSITE W/P PANEL</b> MANUFACTURER: FINDERMAX PRODUCT: VERT. 12' x 48" PANEL COLOR: NIGHT BLUE, NT MATTE INSTALL: CONCEALED FASTENER</p> <p><b>PERFORATED METAL SCREENING</b> MANUFACTURER: HENCKELS MANUFACTURING PRODUCT: POWDERCOATED AL. 30" x 18" PANEL, 1/2" DIA. HOLES COLOR: NIGHT BLUE &amp; BLACK TO MATCH ADJACENT PANEL INSTALL: 1" STANDOFFS OVER COMPOSITE PANEL</p>
--	---	--

**GENERAL NOTES:**

1. ALL GLAZING TO RECEIVE ANODIZED ALUMINUM FRAMES AND MULLIONS
2. ALL BALCONY WALKING TO RECEIVE RECESSED IRON WITH CUSTOM SQUARE TUBE POWDERCOATED FRAME. BLACK (TO MATCH BLACK METAL PANEL)
3. PREFINISHED METAL CLADDING SOFFIT PANEL AT ENDROUSE AND PERIMETER OF BALCONIES



**2 PRELIMINARY EXTERIOR ELEVATION - EAST (B&W)**  
1/8" = 1'-0"



**1 PRELIMINARY EXTERIOR ELEVATION - SOUTH (B&W)**  
1/8" = 1'-0"

**STUDENT APARTMENTS**  
520 UNIVERSITY AVE.  
MADISON, WI  
THE CAREY GROUP REAL ESTATE SERVICES, LLC.  
901 DEMING WAY, SUITE 102  
MADISON, WI 53717

Issue	Description	Date
1ST	LAND USE SUB #1	01-28-24

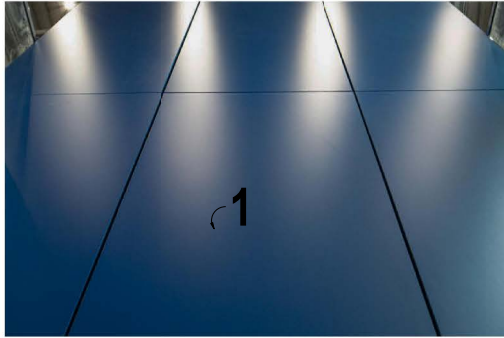
**PRELIMINARY NOT FOR CONSTRUCTION**

This document contains confidential or proprietary information of Iconica. Neither the document nor the information herein is to be reproduced, distributed, used or disclosed, either in whole or in part, except as specifically authorized by Iconica.

Sheet Title:  
**PRELIMINARY EXTERIOR ELEVATIONS**  
Project Number: 20220300  
Sheet Number

**Z306**

EXAMPLE OF COLOR FOR "NIGHT BLUE" PANEL



EXAMPLE OF SCALE AND COLOR FOR "STARLIGHT" PANEL



EXAMPLE OF COLOR & FINISH FOR "SKYLINE" PANEL



EXAMPLE OF "SKYLINE" PANEL TEXTURE



EXAMPLE OF COLOR FOR "AFRO BLACK" PANEL



EXAMPLE OF PERFORATED METAL VTAC SCREENING



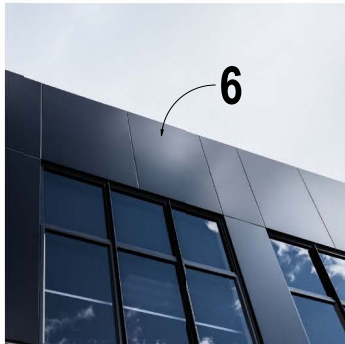
EXAMPLE OF PROPOSED VISTAFOLIA FAUX LIVING WALL AT CORNER BALCONIES FLOORS 1-12 AT UNIVERSITY AND N. FRANCES



EXAMPLE OF COLOR & FINISH FOR "ENIGMA OAK" PANEL



EXAMPLE OF COLOR FOR BLACK ALPOLIC PANEL



EXAMPLE OF PROJECTED WINDOW FRAMES AT "NIGHT BLUE" CLADDING AND WITHIN MURAL



EXTEIOR MATERIAL LEGEND:

<p><b>1</b></p> <p><b>COMPOSITE PANEL</b> MANUFACTURER: FLAERMAX PRODUCT: 1801 - 12' x 48" PANEL COLOR: NIGHT BLUE, NT MATE INSTALL: CONCEALED FASTENER</p>	<p><b>2</b></p> <p><b>COMPOSITE PANEL</b> MANUFACTURER: FLAERMAX PRODUCT: 1801 - 12' x 48" PANEL - OFFSET JOINTS AT BLDG LEVELS COLOR: AFRO BLACK, NT MATE INSTALL: EXPOSED COLOR MATCHED RIVET</p>	<p><b>3</b></p> <p><b>METAL PANEL</b> MANUFACTURER: ALPOLIC PRODUCT: 1801 - 12' x 48" PANEL COLOR: BONE WHITE INSTALL: CONCEALED FASTENER</p>	<p><b>4</b></p> <p><b>COMPOSITE PANEL</b> MANUFACTURER: FLAERMAX PRODUCT: 1801 - 12' x 48" PANEL - STAGGERED JOINTS COLOR: ENIGMA OAK, NT MATE INSTALL: CONCEALED FASTENER</p>	<p><b>5</b></p> <p><b>COMPOSITE PANEL</b> MANUFACTURER: FLAERMAX PRODUCT: 1801 - 12' x 48" PANEL - VARIED SIZES COLOR: SKYLINE, NT FINISH (STONE TEXTURE) INSTALL: EXPOSED COLOR MATCHED RIVET</p>	<p><b>6</b></p> <p><b>METAL PANEL</b> MANUFACTURER: ALPOLIC PRODUCT: 1801 - 12' x 48" PANEL COLOR: BLACK, ANODIZED INSTALL: CONCEALED FASTENER</p>	<p><b>7</b></p> <p><b>METAL PANEL - ROOF TOP MECHANICAL SCREENING</b> MANUFACTURER: FRASCO PRODUCT: 780 - CORRUGATED PANEL, 24 GA COLOR: BLACK</p>
---	---	---	--	--	--	--

**ICONICA**  
911 DEWING WAY, SUITE 102 / MADISON, WI 53717  
PH: 608.261.7774 / F: 608.261.2123  
iconicawisconsin.com

**STUDENT APARTMENTS**

520 UNIVERSITY AVE.  
MADISON, WI

THE CAREY GROUP REAL ESTATE SERVICES, LLC.  
901 DEWING WAY, SUITE 102  
MADISON, WI 53717

ISSUE DATES:  
Issue Description Date  
1ST LAYOUT SUB 01/17/24

PRELIMINARY  
NOT FOR  
CONSTRUCTION

This document contains confidential or proprietary information of Iconica. Neither the document nor the information herein is to be reproduced, distributed, used or disclosed, either in whole or in part, except as specifically authorized by Iconica.

Sheet Title:  
**EXTERIOR MATERIAL BOARD**

Project Number: 20220300  
Sheet Number

2307

ISSUE 01/17/24



**STUDENT APARTMENTS**

520 UNIVERSITY AVE.  
 MADISON, WI  
 THE CAREY GROUP REAL ESTATE SERVICES, LLC.  
 901 CEDING WAY, SUITE 102  
 MADISON, WI 53717

Issue	Description	Date
01	LAND USE SUB #1	07-28-24

**PRELIMINARY  
 NOT FOR  
 CONSTRUCTION**

This document contains confidential or proprietary information of Iconica. Neither the document nor the information herein is to be reproduced, distributed, used or disclosed, either in whole or in part, except as specifically authorized by Iconica.

Sheet Title:  
**SUPPLEMENTAL  
 RENDERINGS**

Project Number: 20220300  
 Sheet Number

**Z308**



**STUDENT APARTMENTS**

520 UNIVERSITY AVE.  
 MADISON, WI  
 THE CAREY GROUP REAL ESTATE SERVICES, LLC.  
 901 DEMING WAY, SUITE 102  
 MADISON, WI 53717

ISSUE DATES:

Issue	Description	Date
01	LAND USE SUB #1	07/28/24

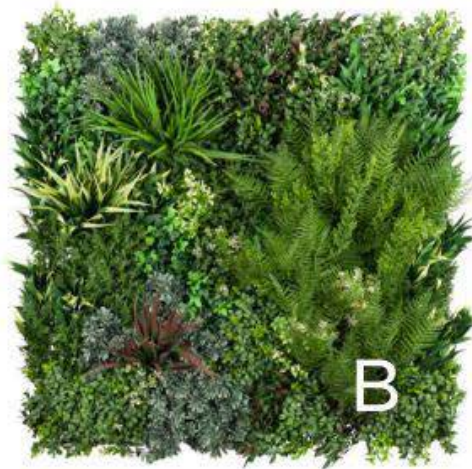
**PRELIMINARY  
 NOT FOR  
 CONSTRUCTION**

This document contains confidential or proprietary information of Iconica. Neither the document nor the information herein is to be reproduced, distributed, used or disclosed, either in whole or in part, except as specifically authorized by Iconica.

Sheet Title:  
**SUPPLEMENTAL  
 RENDERINGS**

Project Number: 20220300  
 Sheet Number:

**Z309**



“Vistafolia®’s lush artificial green wall system panels have been designed to create a beautiful green environment with a realistic effect even in the most inhospitable planting locations.”

## PRODUCT DESCRIPTION

The standard size panel comprises UV Stabilized & Fire Rated artificial foliage fixed to a powder coated mild steel grid.

## FEATURES

- Three-panel system prevents repetition in planting and removes join lines
- Durable panels manufactured to ISO 9001
- UV & Fire Rated with test certificates
- REACH Compliant
- Quick and easy installation
- Sixteen different plant varieties
- Customizable with a range of Colour & Texture boxes

### Quality Standards / Certification:

**UV Test:** BS EN ISO 4892-2: 2013 - 'Plastics - Methods of Exposure to Laboratory Light Sources - Xenon-arc lamps.

**Reaction to fire classification:** B-s1, d0. BS EN ISO 13501-1:2007+A1:2009 Fire classification of construction products and building elements. Part 1: Classification using data from reaction to fire tests. Test to flammability UL94HB classified HB.

**Freeze/Thaw test:** MIL-STD-810G Method 524.

## TECHNICAL SPECIFICATIONS

<b>Standard Size Panel</b>	Height: 31.5" Width: 31.5" Depth: up to 8"
<b>Coverage</b>	1 Panel = 6.9 sq. ft.
<b>Weight</b>	Approx. 15.5 pounds per panel
<b>Distribution</b>	72 plants per panel
<b>Color Reference</b>	Mixed colors
<b>Manufacturing process</b>	Injection molded polyethylene / Foliage fixed to the grid manually
<b>Packing</b>	Box of three panels A, B, C
<b>Warranty</b>	5 year US Limited Liability Warranty*

\*For more information visit [www.vistafolia.com](http://www.vistafolia.com)

For more information see our [Vistafolia® Technical Guide](#)



UV - IFR  
Technology



Quality  
Standard



Tested &  
Certified



5 Year US  
Limited Liability  
Warranty



Low  
Maintenance



Recyclable\*  
\*Check with local  
authority

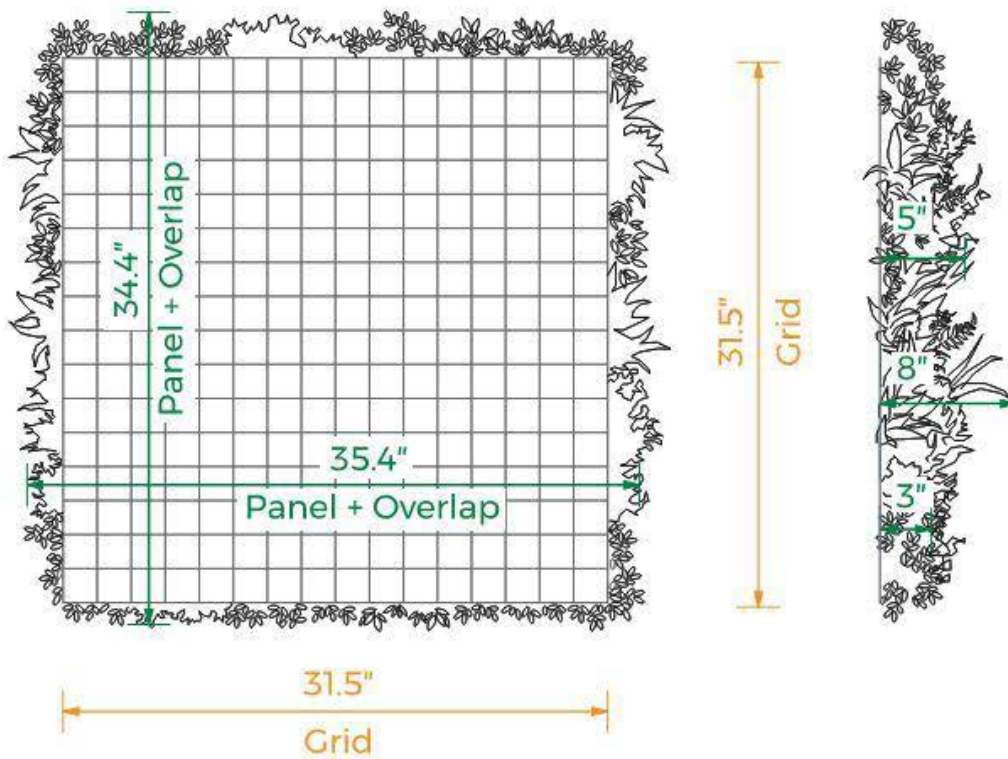


**PANEL PROFILE**

1 Panel = 6.88 sq. ft.

REAR VIEW

SIDE VIEW



The Vistafolia® Panel was designed with a small allocation of 'planting overlap' to allow for seamless installation of multiple panels. The top overlap is slightly greater than the bottom one whereas the side overlaps are the same. The overlap also serves to disguise the grid that holds the plants.