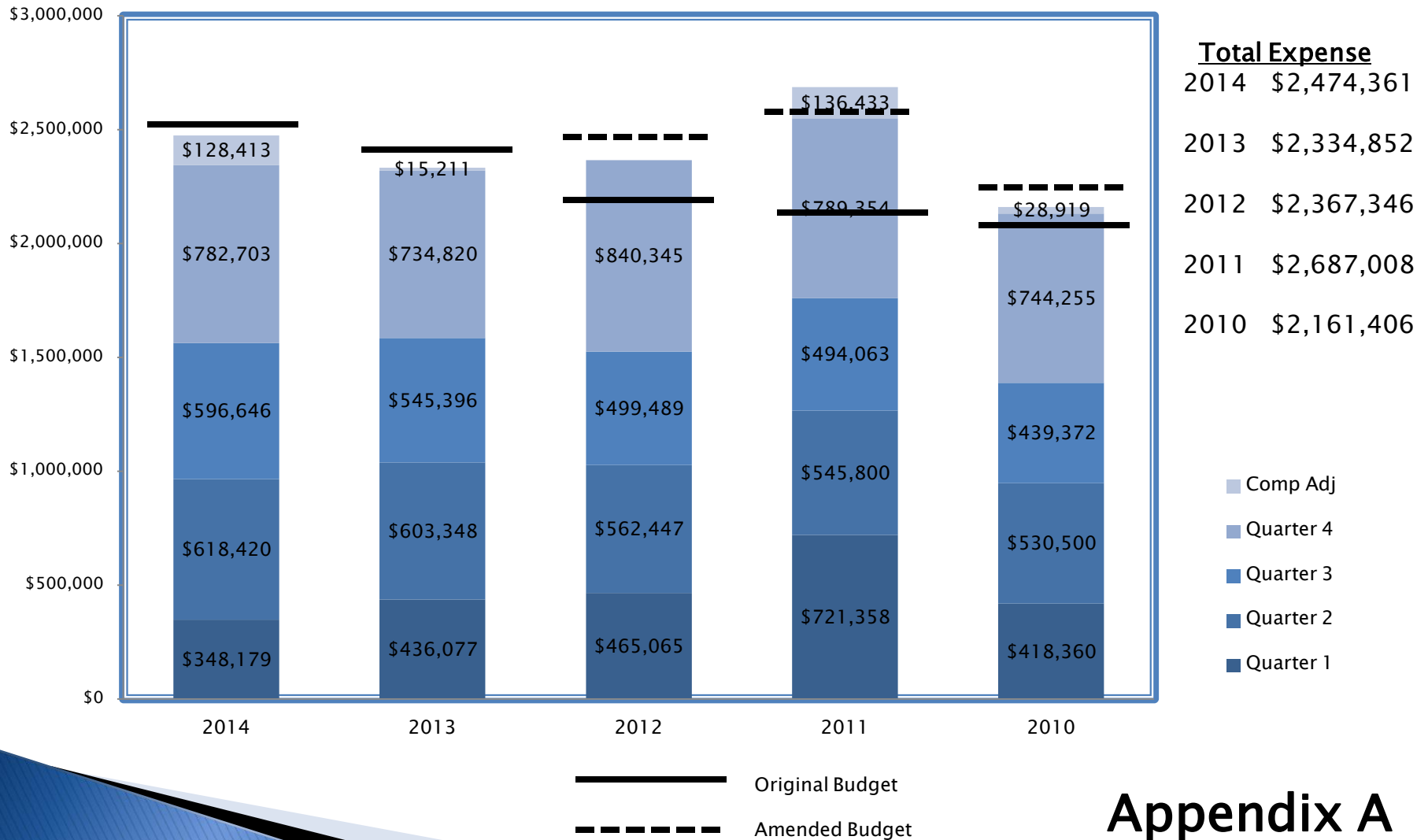


Madison Police Department Appendix to Report of Overtime 2014 & 1st Quarter 2015

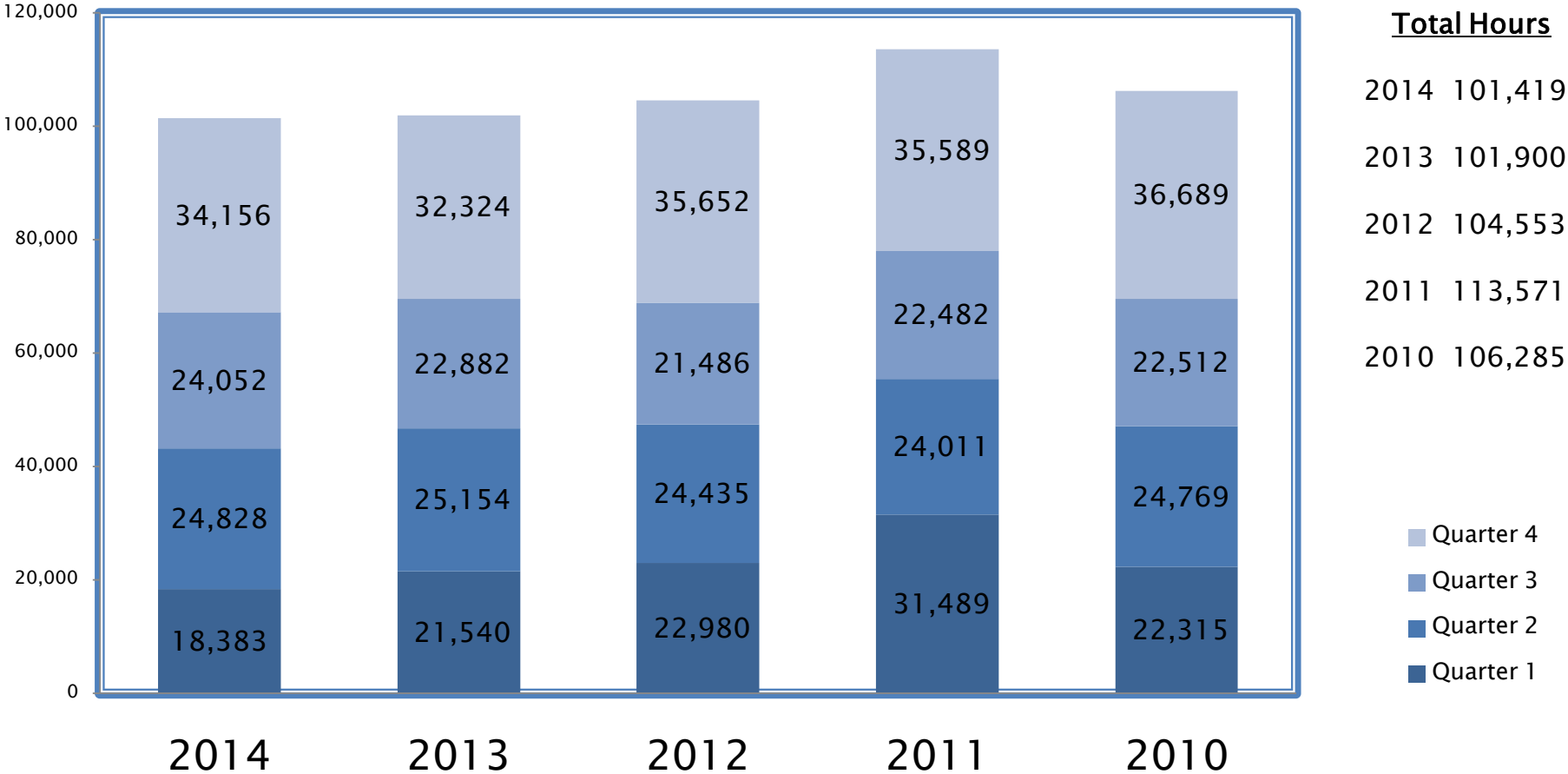


Comparison of Overtime Expenses 2014 – 2010

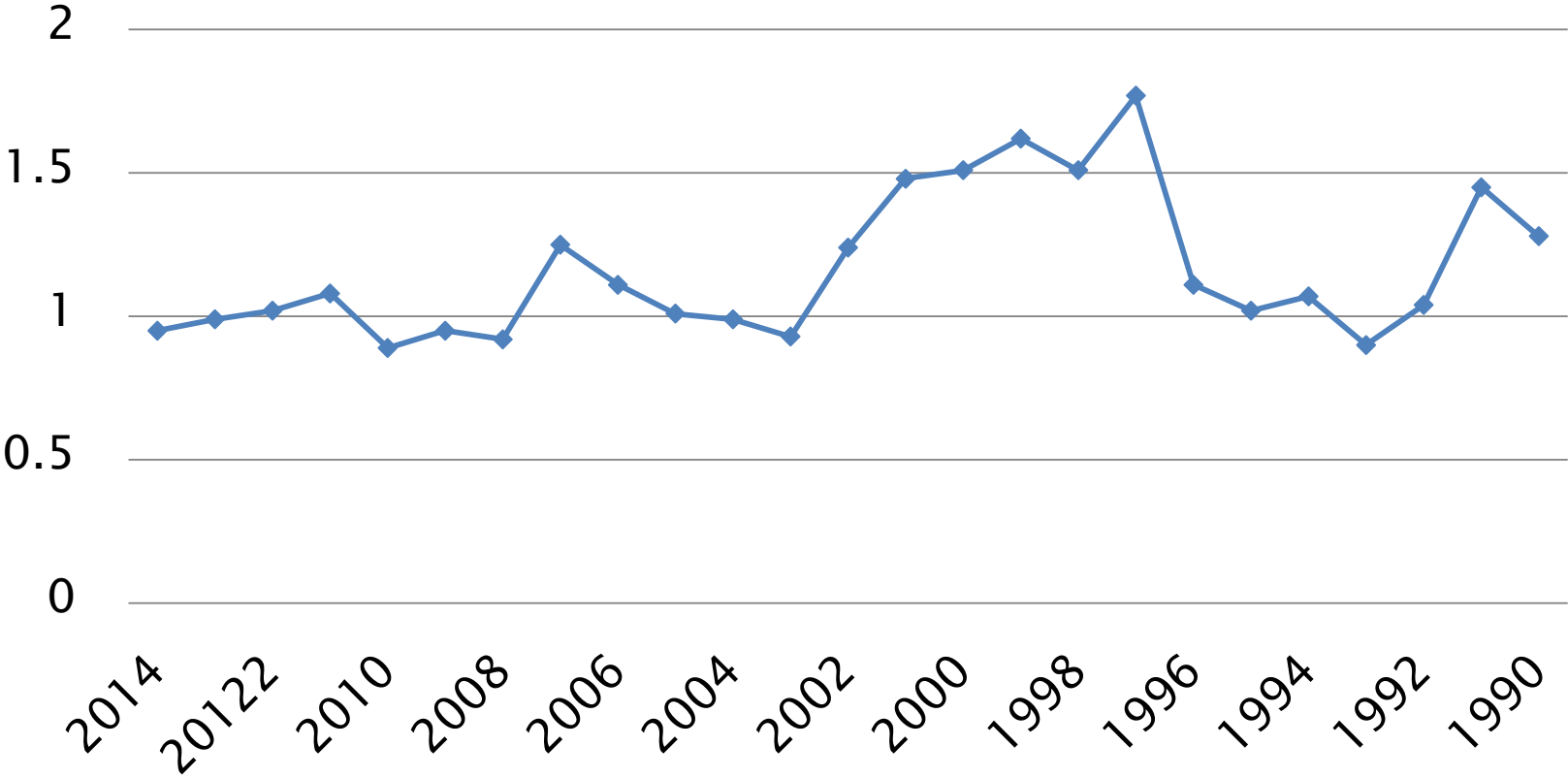


Appendix A

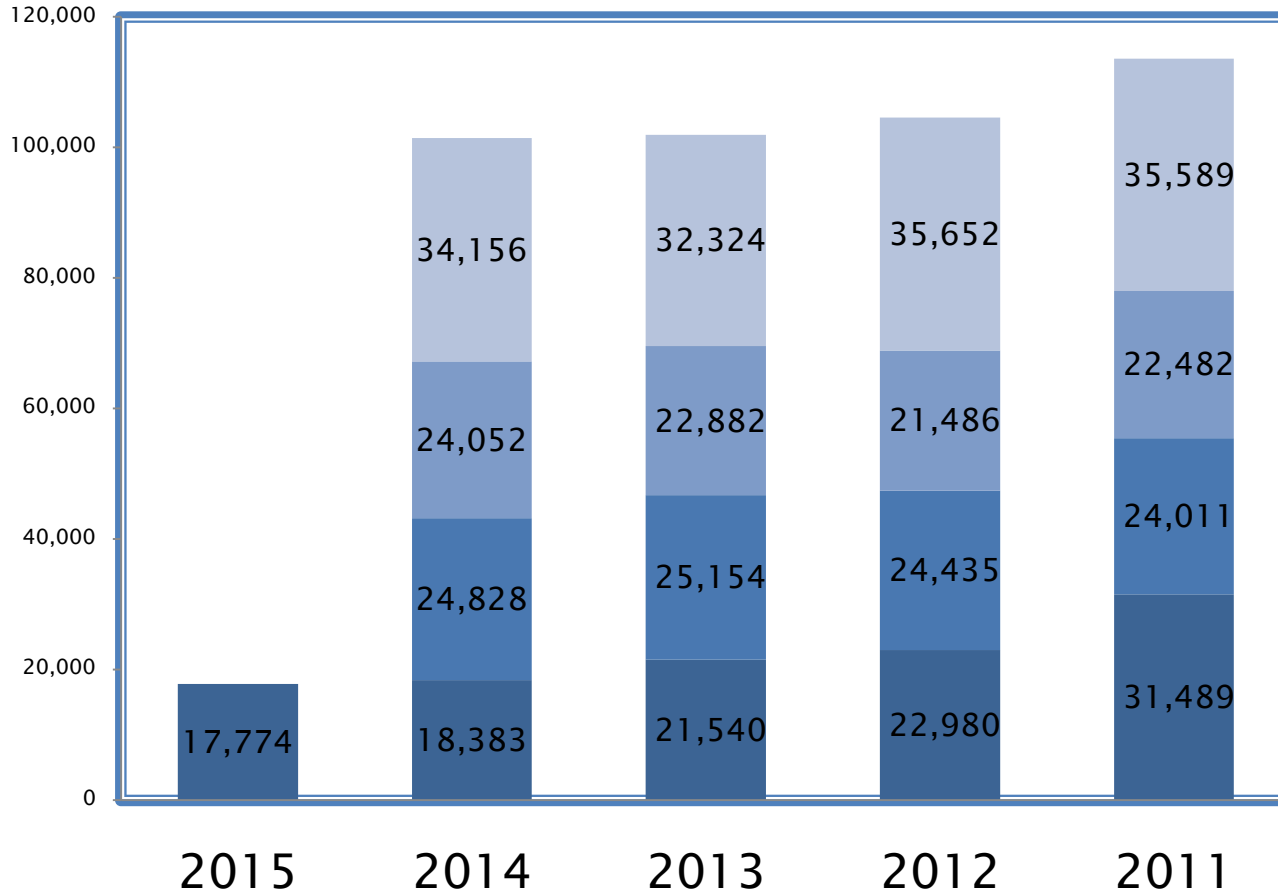
Comparison of Overtime Hours 2014 - 2010



Pay to Time Ratio 2013 - 1990



Comparison of Overtime Hours 2015 - 2011



<u>Total Hours</u>		
	<u>Total Year</u>	<u>1st Qtr</u>
2015		17,774
2014	101,419	18,383
2013	101,900	21,541
2012	104,553	22,980
2011	113,571	31,489

- Quarter 4
- Quarter 3
- Quarter 2
- Quarter 1