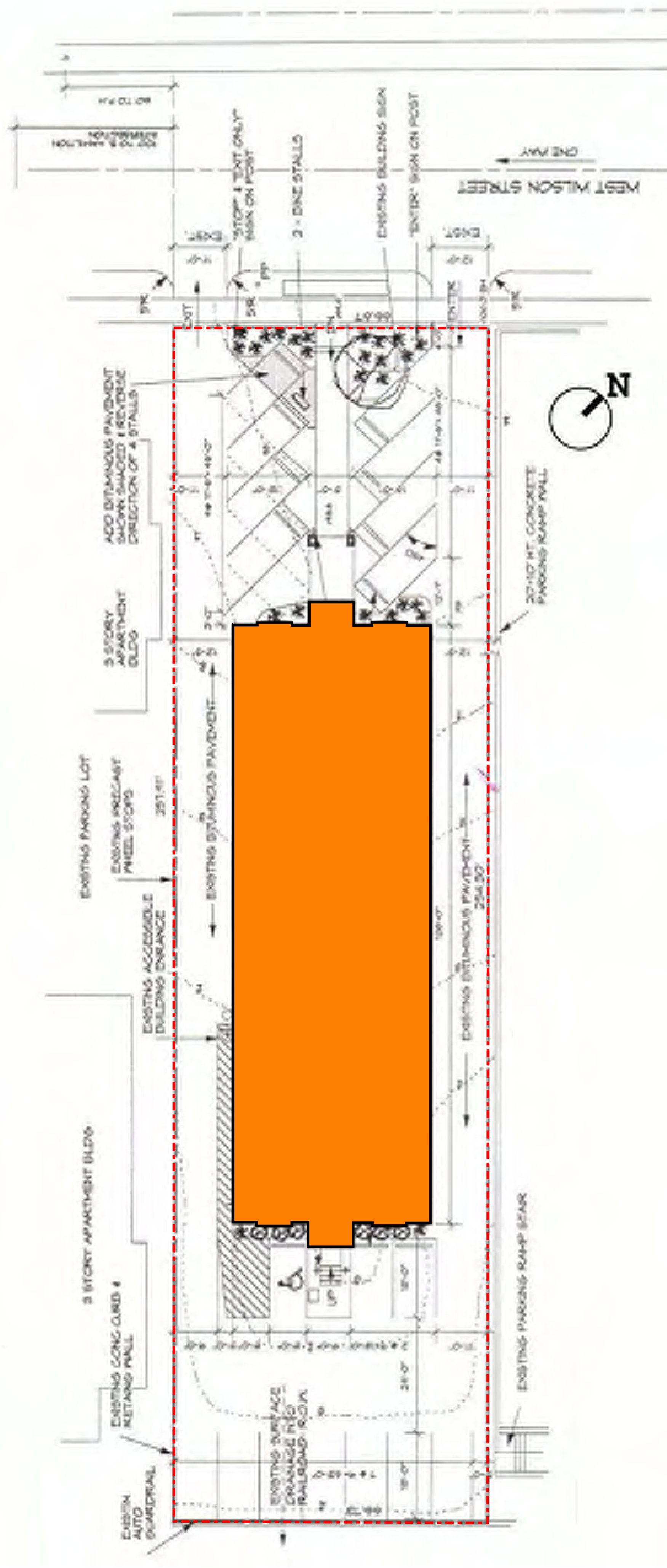
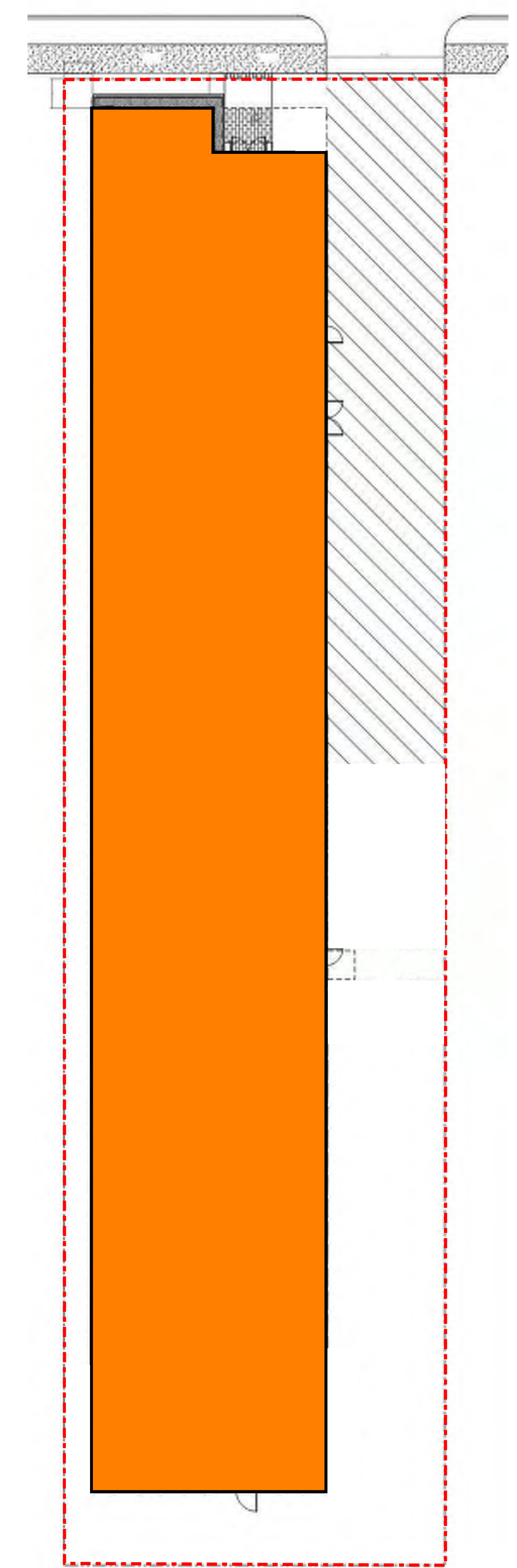




SITE LOCATION MAP

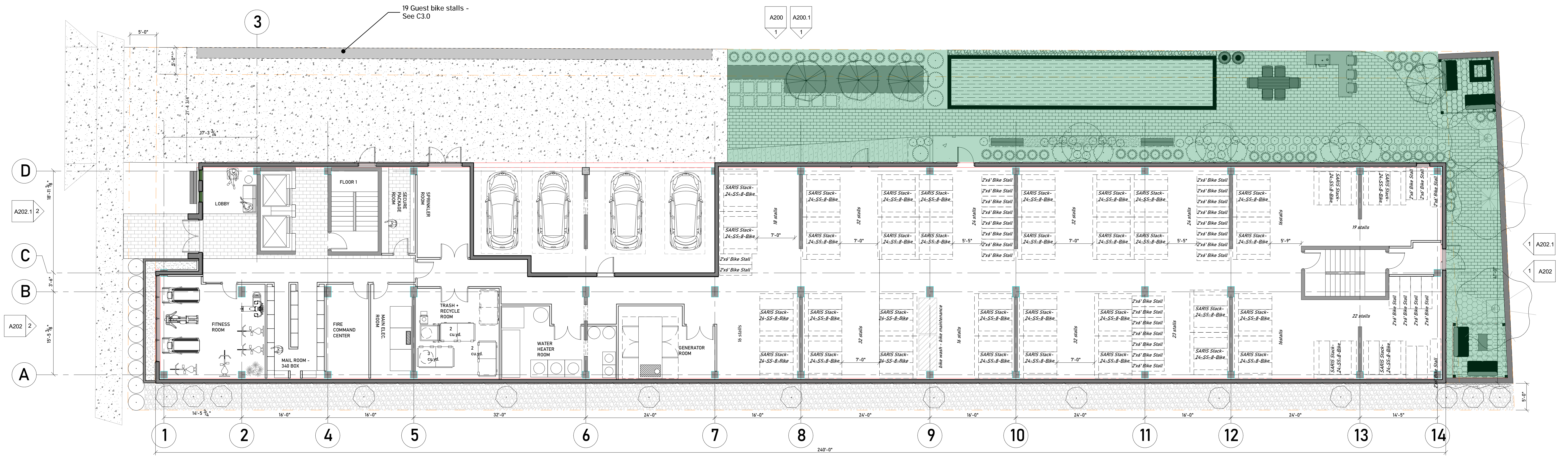


EXISTING BUILDING ON SITE



PROPOSED BUILDING ON SITE

Revisions:	
Project #:	21.000
Issued For:	UDC/P.C.
Date:	08.07.2023



① Level 1
1/8" = 1'-0"

BIKE PARKING SUMMARY

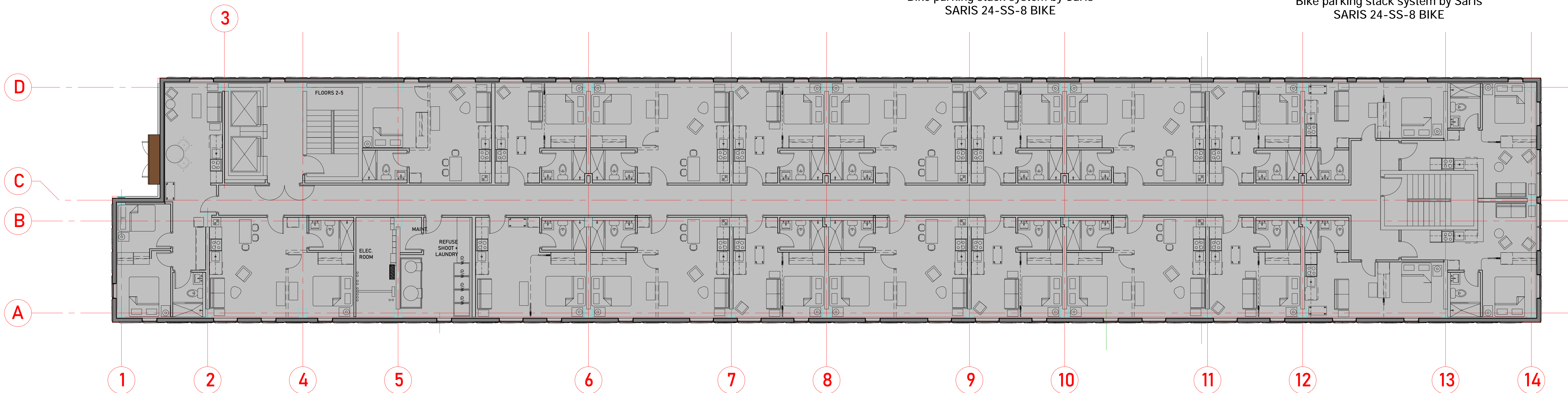
- 1.) For residents: (320) enclosed and secure bike parking spaces using 2x6 ground stall and Saris parking stack system.
- 2.) For guests: (19) 2x6 ground stalls.



Bike parking stack system by Saris
SARIS 24-SS-8 BIKE



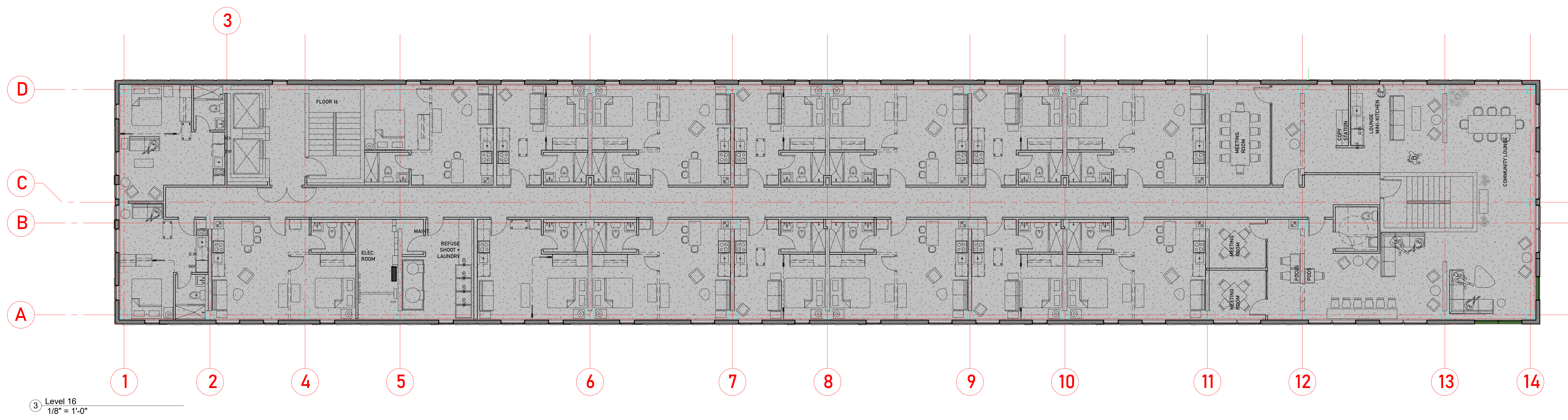
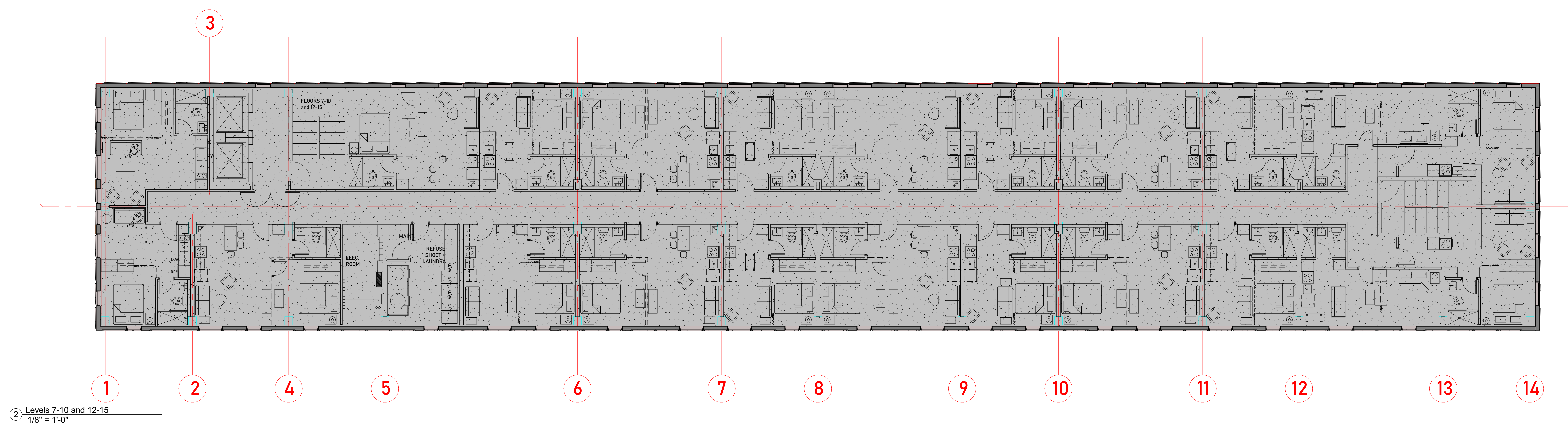
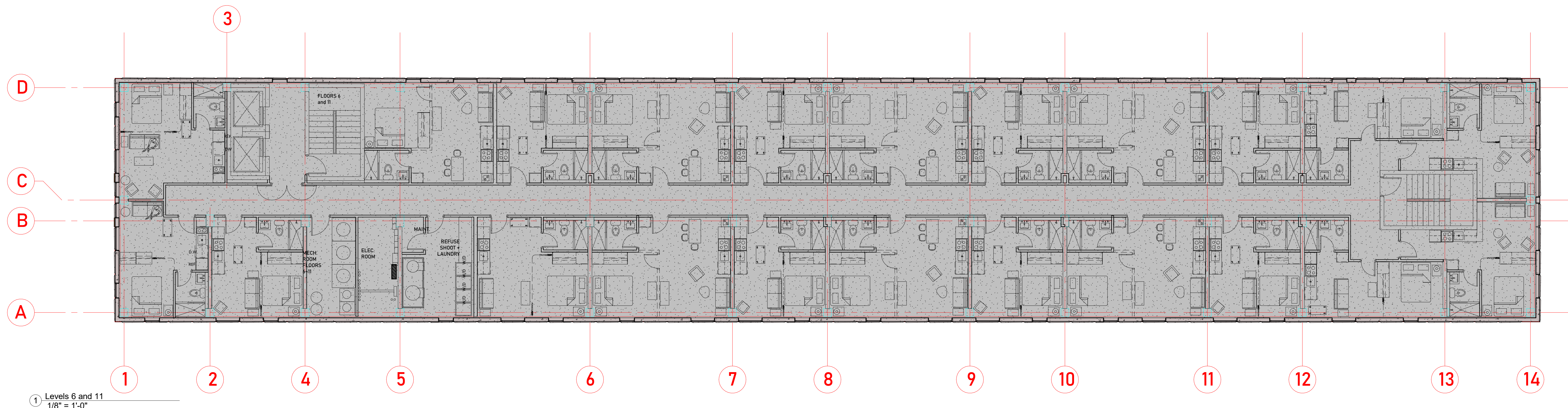
Bike parking stack system by Saris
SARIS 24-SS-8 BIKE



② Levels 2-5
1/8" = 1'-0"

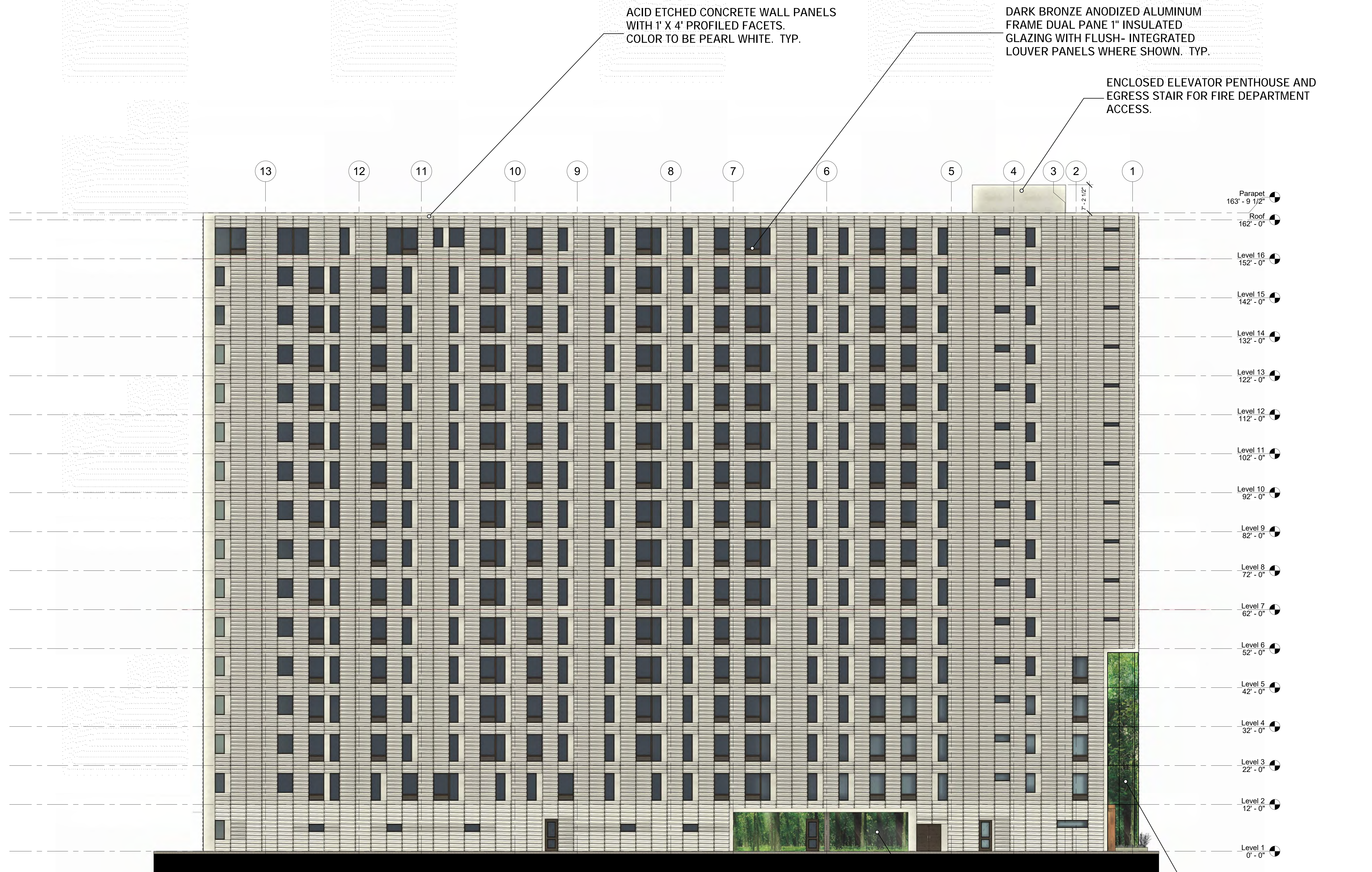
Revisions:	

Project #:	21,000
Issued For:	Review
Date:	06/01/2023



Revisions:	

Project #: 21.000
Issued For: Review
Date: 06/01/2023



① East
 3/32" = 1'-0"

PEARL WHITE - Concrete wall panel color

GENERAL MATERIAL NOTES:

- 1.) The glass on all windows and doors shall be slightly tinted to allow views into and out of the interior.
- 2.) The primary exterior material will be an highly durable acid etched concrete wall panel by Wells Infinite Facades, typically 10' H x 32' W, with a custom faceted profile.
- 3.) The 1' x 4' faceting will occur on all facades.
- 4.) The facets incorporate a horizontal and vertical articulation and twist within each unit, creating a pattern and texture change throughout the facade.
- 5.) Wall art enclosures: See LT-0 for details. The art images would be color jet printed on 4' x 10' Di-bond composite panels, mounted behind a glass curtain wall and internally lit with a programmable LED system. Glass to be 48" w x 120" h 1/4" clear tempered. These would occur in the following locations:
 - Recessed Wilson Street entry condition with a 51 feet tall, L-shaped (10' x 20') wide.
 - Wrapping a 42' H x 30' W portion of the upper SW corner facing the lake.
 - The interior walls of the zip car garage to utilize same wall assembly without glass curtain wall.
- 6.) Aluminum T&G rain-screen panel. 18"W x 84"H. attached directly to wall panel. Wood grain walnut finish. Longboard Architectural products. See included product sheet.

LIT WALL ART ENCLOSURE.
 See Note 5 this sheet and detail sheet LT-0

INTERNALLY LIT WALL ART ENCLOSURE.
 See Note 5 this sheet and detail sheet LT-0

Revisions:	

Project #: 21.000
 Issued For: Review
 Date: 06/01/2023



PEARL WHITE - Concrete wall panel color

GENERAL MATERIAL NOTES:

- 1.) The glass on all windows and doors shall be slightly tinted to allow views into and out of the interior.
- 2.) The primary exterior material will be an highly durable acid etched concrete wall panel by Wells Infinite Facades, typically 10' H x 32' W, with a custom faceted profile.
- 3.) The 1' x 4' faceting will occur on all facades.
- 4.) The facets incorporate a horizontal and vertical articulation and twist within each unit, creating a pattern and texture change throughout the facade.
- 5.) Wall art enclosures: See LT-0 for details. The art images would be color jet printed on 4' x 10' Di-bond composite panels, mounted behind a glass curtain wall and internally lit with a programmable LED system. Glass to be 48" w x 120" h 1/4" clear tempered. These would occur in the following locations:
 - Recessed Wilson Street entry condition with a 51 feet tall, L-shaped (10' x 20') wide.
 - Wrapping a 42' H x 30' W portion of the upper SW corner facing the lake.
 - The interior walls of the zip car garage to utilize same wall assembly without glass curtain wall.
- 6.) Aluminum T&G rain-screen panel. 18"W x 84"H. attached directly to wall panel. Wood grain walnut finish. Longboard Architectural products. See included product sheet.

Revisions:	

Project #: 21000
Issued For: Review
Date: 06/01/2023



SW View of 139 West Wilson

Revisions:	

Project #: 21.000
Issued For: Review
Date: 06/01/2023



progression

139 West Wilson
Madison, Wisconsin

West Wilson Perspectives

Revisions:	

Project #: 21.000
Issued For: Review
Date: 06/01/2023

View from Lake Monona



progression

139 West Wilson
Madison, Wisconsin
West Wilson Perspective - Night

Revisions:	

Project #: 21.000
Issued For: Review
Date: 06/01/2023

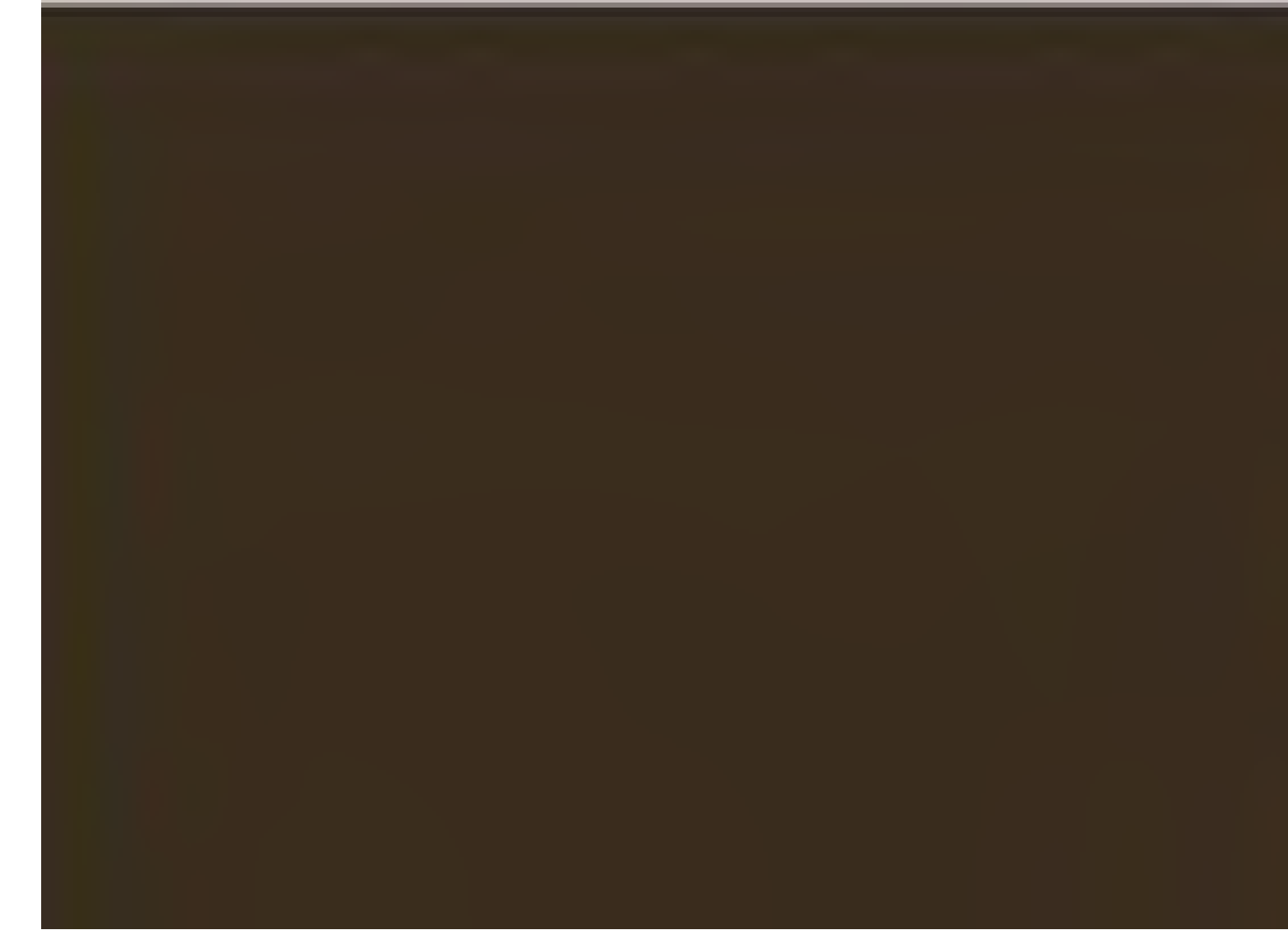
A209.2



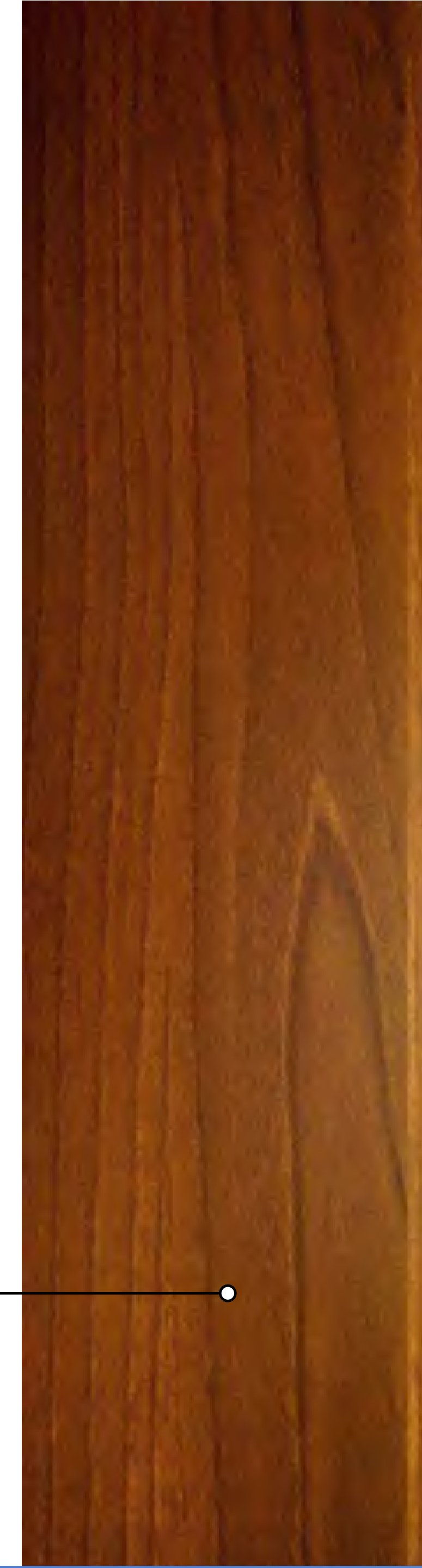
DARK BRONZE ALUMINUM NEXT TO LONGBOARD TABLE WALNUT-1



1" INSULATED CELAR GLASS SLIM PROFILE ALUMINUM STOREFRONT SYSTEM



DARK BRONZE ANODIZED ALUMINUM FINISH AT ALL EXTERIOR WINDOWS, DOORS AND LOUVERS.



LONGBOARD ARCHITECTURAL PRODUCTS - TONGUE & GROOVE CLADDIGN SYSTEM
4" WIDE (4V) VERTICAL ORIENTATION
COLOR: TABLE WALNUT-1

VERTICAL ACCENT - LONGBOARD



ENALRGED PARTIAL NORTH FACADE SHOWING WINDOW-LOUVER-VERTICAL ACCENT (LONGBOARD) CONFIGURATION



TONGUE & GROOVE CLADDING SYSTEM

March 2023

TYPICAL ISOMETRIC

PROFILES
V-Groove: 2-1/2", 4", 6"
Smooth: 6"
Channel: 6"
Standard Lengths: 24'
96 SQ FT/box

COMPONENTS - Standard Lengths: 12'
Traditional: Starter Strip, Back-to-Back Starter Strip, 2" Corner Set, 1-3/8" Two Piece J Track, 1-3/8" Termination Set, Compression Joint (CJ), 1-1/2" Flat Revealed Set, 1-1/2" U-Reveal Set, 1-1/2" T&G U-Reveal, 2" Offset Flat Revealed

FINISHES
Woodgrains, solid color, naturally aged metal, custom solid colour matching (additional lead times apply)

ATTACHMENT
Planks: Quick-screen clips w. #8 screws* @ 32" o.c. (standard). Quick-screen clips included: 135 pcs/4' box, 90 pcs/6' box. Trims: hand fasten w. #8 screws* @ 16" o.c. *Screws not included.

BIM & CAD
RVT & DWG files available, see website for details

LEAD TIME
3-6 business days + shipping (subject to change)

LONGBOARD ARCHITECTURAL PRODUCTS
info@longboardproducts.com
longboardproducts.com
800 604 0343

TECHNICAL SPECIFICATIONS

PHYSICAL DATA
6063-T5 Extruded Aluminum
100% Recyclable
Warranty: Finish: 15 year (standard)/20 year* (ultra) (*10 week lead time); Aluminum: 50 year
Weight (bs/sqft): ~1.5

TESTING
ICC-ES Evaluation Report - Division: 07 00 00 Thermal and Moisture Protection Section: 07 48 00 - Siding
AAMA 929 Rainscreen: W1, V2
LAGB - Los Angeles Department of Building Safety (LAGBS) accepts ICC-ES reports as proof of compliance
Florida Product Code: FL20075
Miami Dade, Florida, Notice of Acceptance(NOA): NOA No. 22 0206 01 -Expiration Date: January 26, 2028
Impact testing: TAS 201
WUI (The Wildland-Urban Interface) - California Department of Forestry & Fire Protection Office of the State Fire Marshal Listing No. 8140-2385-0500

Fire Rating: Class A Non-Combustible by ASTM E136 & ASTM E84 - A2-61.00 by EN 13501-1
Light Reflectance: 5% (black) up to 73.2% (Ultra White)
Wind load: Up to 121 psf (5794 Pa) TAS 202, TAS 203

Revisions:	

Project #:	21.000
Issued For:	Review
Date:	06/01/2023

2" wide curtain wall Mullions. See details 1 and 2, sheet A302



1 North Curtain wall Elevation



2 North Curtain wall LED light locations

Location of concealed NEON LED tubes shown in red dash. See detail 1/A302.

GENERAL NOTE:
Glass curtain wall and illuminated art wall assemblies as shown on East, West and South Elevations to follow same detail and lighting configurations.

Revisions:	

Project #: 21.000
Issued For: UDC/P.C.
Date: 08.07.2023

PLAN MODIFICATIONS:

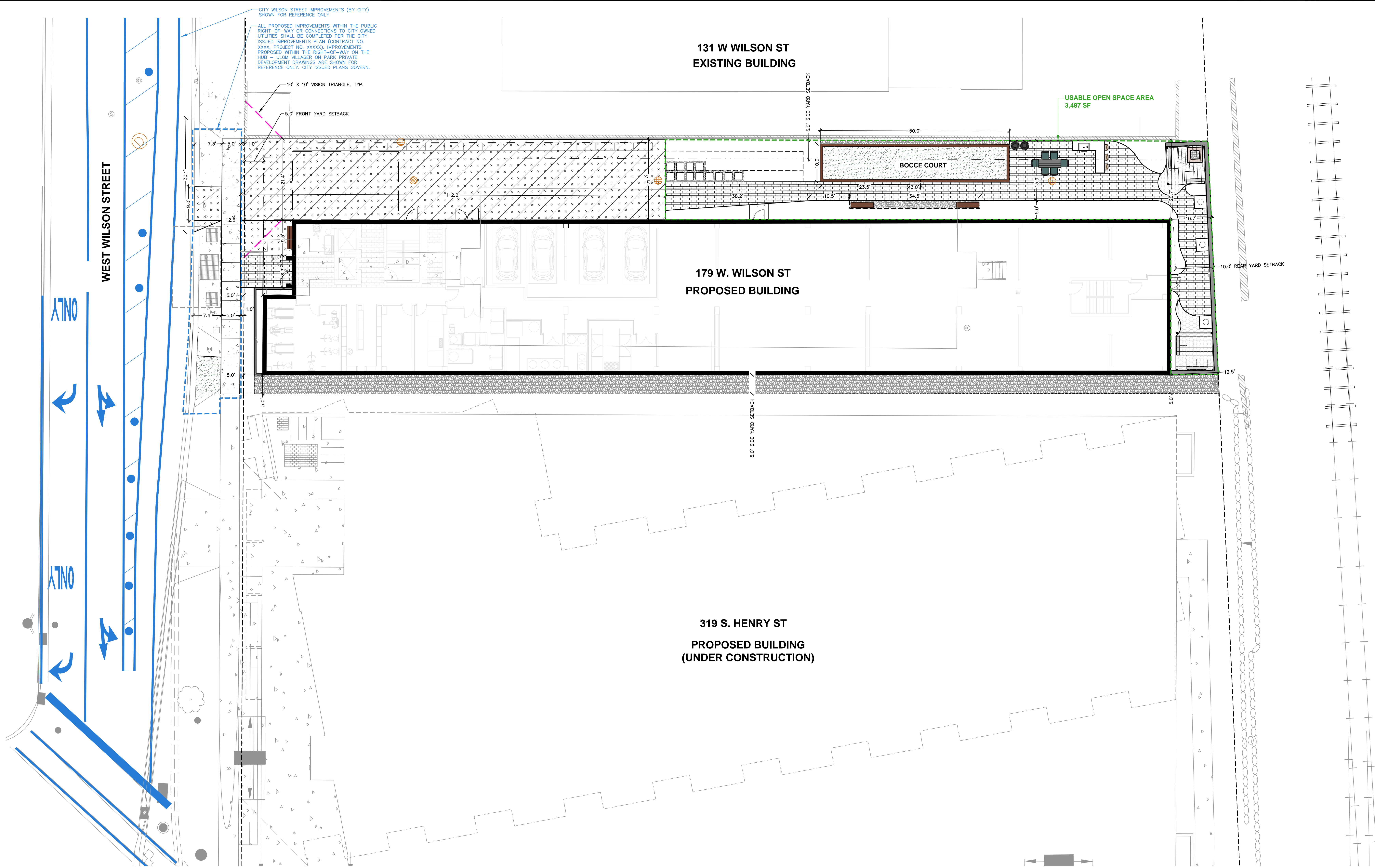
#	Date	Description
1	06.26.2023	LAND USE / UDC SUBMITTAL
2		
3		
4		
5		
6		
7		
8		
9		
10		
11		
12		
13		
14		
15		

Designed By: MAS
 Reviewed By: KJ
 Approved By:

SHEET TITLE:
**SITE PLAN -
 DIMENSIONED**

SHEET NUMBER:
C3.0

JSD PROJECT NO: 22-11487



SITE INFORMATION BLOCK

SITE ADDRESS	139 WEST WILSON STREET
PROPERTY ACREAGE	0.395 ACRES
NUMBER OF BUILDING STORIES	16
TOTAL BUILDING SQUARE FOOTAGE	9,840
GROSS BUILDING SQUARE FOOTAGE	156,633
NUMBER OF PARKING STALLS	
SURFACE	0
WITHIN BUILDING	4
NUMBER OF ON-SITE BICYCLE STALLS:	19
EXISTING IMPERVIOUS SURFACE AREA	16,693 SF
EXISTING PERVIOUS SURFACE AREA	500 SF
EXISTING IMPERVIOUS SURFACE AREA RATIO	0.97
PROPOSED IMPERVIOUS SURFACE AREAS	12,411 SF
PROPOSED PERMEABLE PAVER AREAS	1,627 SF
PROPOSED PLANTING/STONE MULCH AREAS	3,168 SF
PROPOSED USABLE OPEN SPACE AREAS	3,487 SF

SCALE IN FEET
 10' 0 10'

DIGGERS HOTLINE
 Toll Free (800) 242-8511

File: L:\2022\179 West Wilson\179 West Wilson\179 West Wilson\179 West Wilson.dwg
 User: jyske
 Date: 06/26/2023 11:18 AM
 Plot: 06/26/2023 11:18 AM
 Plotter: HP DesignJet T1100e
 Scale: 1/8"=1'-0"

THESE PLANS AND DESIGNS ARE COPYRIGHT PROTECTED AND MAY NOT BE USED IN WHOLE OR IN PART WITHOUT THE WRITTEN CONSENT OF JSD PROFESSIONAL SERVICES, INC.

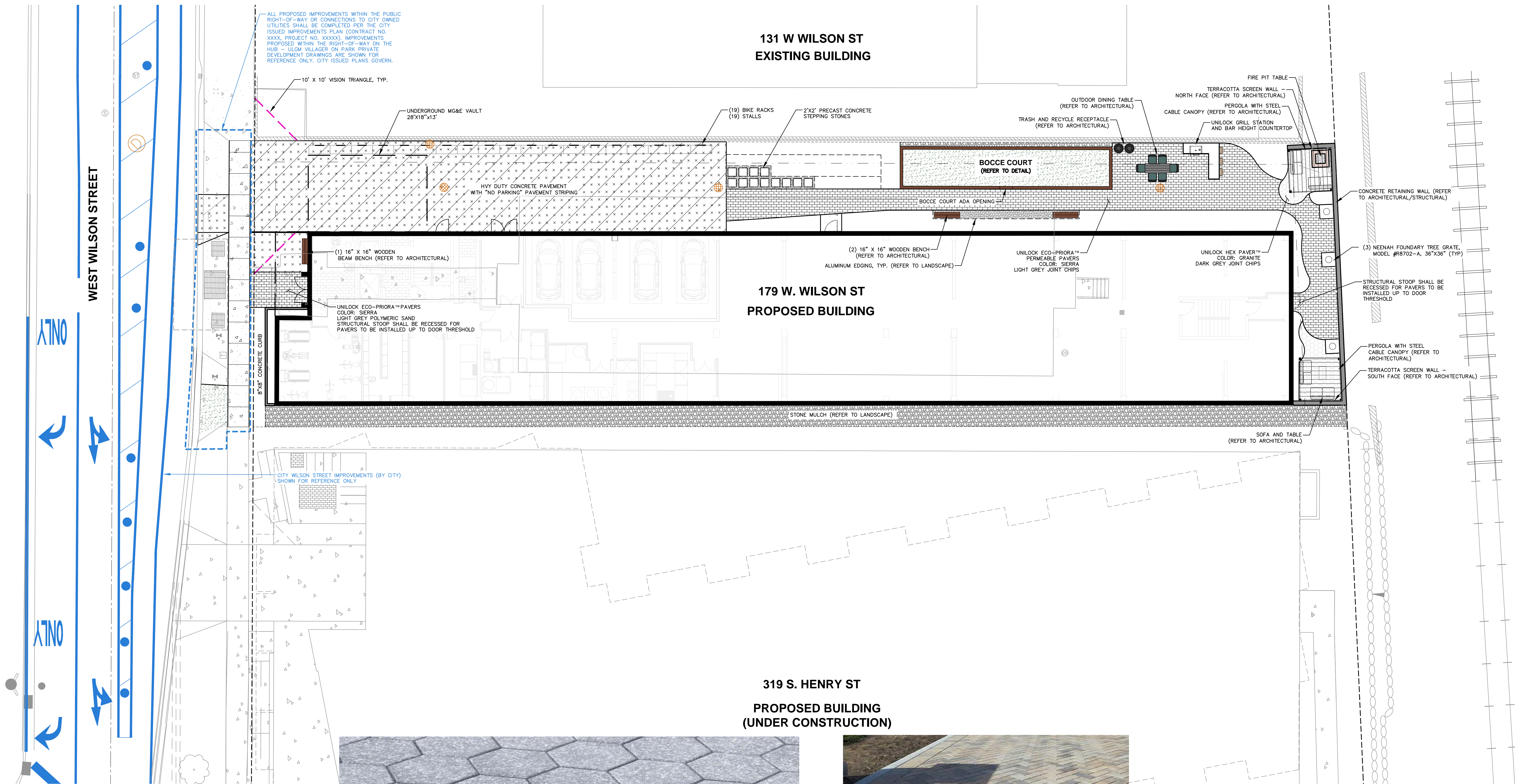
PLAN MODIFICATIONS:

#	Date:	Description:
1	06.26.2023	LAND USE / UDC SUBMITTAL
2		
3		
4		
5		
6		
7		
8		
9		
10		
11		
12		
13		
14		
15		

Designed By: MAS
Reviewed By: KJ
Approved By:

SHEET TITLE:
**SITE PLAN -
ANNOTATED**

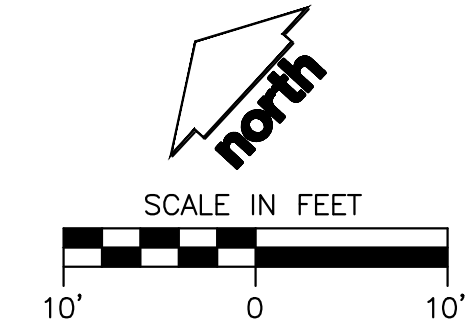
SHEET NUMBER:
C3.1

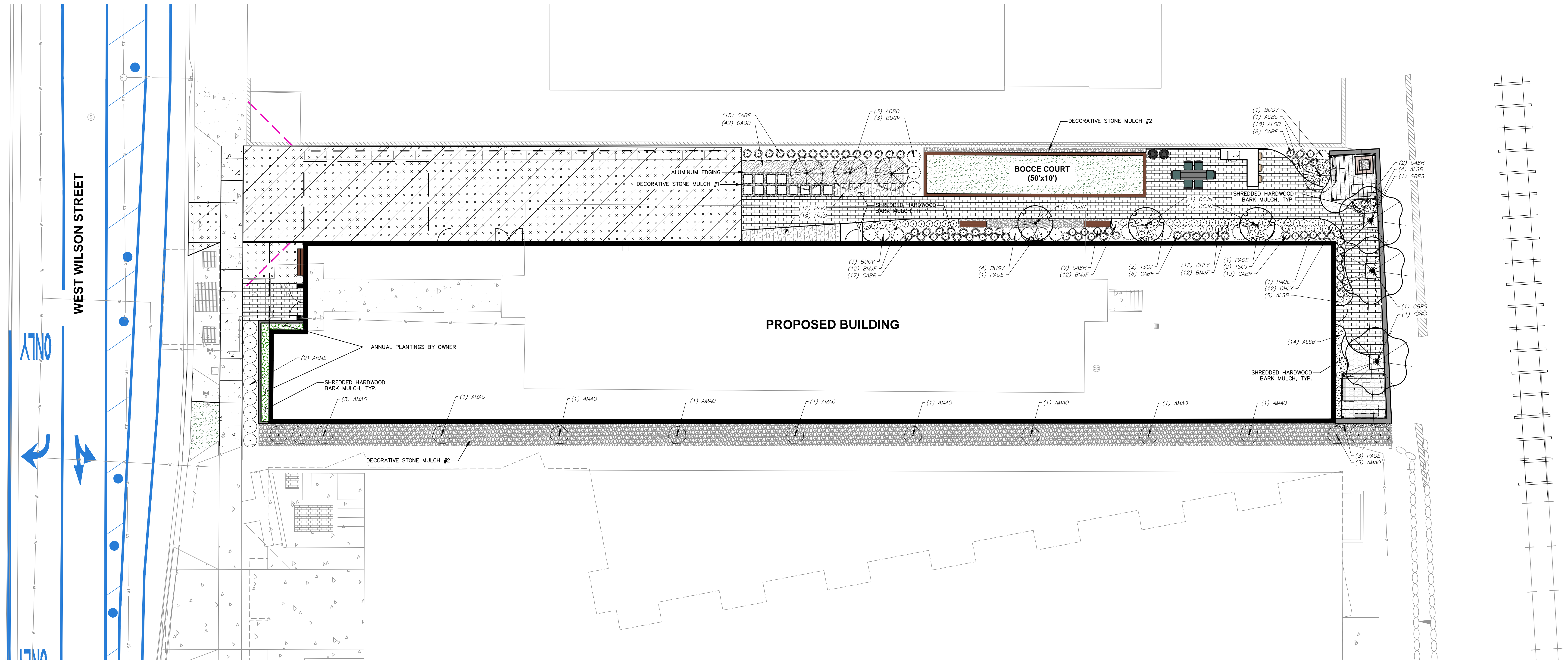


UNILOCK HEX PAVER - PERMEABLE - COLOR: GRANITE



UNILOCK ECO-PRIORA - PERMEABLE - COLOR: SIERRA





PLANT SCHEDULE					
DECIDUOUS TREES	CODE	BOTANICAL / COMMON NAME	CONT	SIZE	QTY
	ACBC	<i>Acer saccharum</i> 'Barrett Cole' TM Apollo Sugar Maple	B & B	2.5" Cal	4
	CCJN	<i>Carpinus caroliniana</i> 'J.N. Upright' TM Firespire American Hornbeam	B & B	2.5" Cal	3
	GBPS	<i>Ginkgo biloba</i> 'Princeton Sentry' Princeton Sentry Maidenhair Tree	B & B	2.5" Cal	3
DECIDUOUS SHRUBS	CODE	BOTANICAL / COMMON NAME	CONT	SIZE	QTY
	AMAO	<i>Amelanchier alnifolia</i> 'Obelisk' TM Standing Ovation Serviceberry	B & B	Min. 5' tall	14
	ARME	<i>Aronia melanocarpa</i> 'UCONNAM165' TM Low Scape Mound Chokeberry	#3	Min. 8" - 18"	9
EVERGREEN SHRUBS	CODE	BOTANICAL / COMMON NAME	CONT	SIZE	QTY
	BUGV	<i>Buxus</i> x 'Green Velvet' Green Velvet Boxwood	#3	Min. 12" - 24"	11
	TSCJ	<i>Tsuga canadensis</i> 'Jeddalah' Jeddalah Eastern Hemlock	#5	Min. 12" - 24"	4
PERENNIALS & GRASSES	CODE	BOTANICAL / COMMON NAME	CONT	SIZE	QTY
	ALSB	<i>Allium</i> x 'Summer Beauty' Summer Beauty Allium	#1	Min. 8" - 18"	33
	BMJF	<i>Brunnera macrophylla</i> 'Jack Frost' TM Jack Frost Siberian Bugloss	#1	Min 8" - 18"	36
	CABR	<i>Calamagrostis brachytricha</i> Korean Feather Reed Grass	#1	Min 8" - 18"	68
	CHLY	<i>Chelone lyonii</i> 'Armitpp02' TM Tiny Tortuga Pink Turtlehead	#1	Min 8" - 18"	24
	PAQE	<i>Parthenocissus quinquefolia engelmannii</i> Engelmann Virginia Creeper	#1	Min. 24" - 36"	7
GROUND COVERS	CODE	BOTANICAL / COMMON NAME	SPACING	QTY	
	GAOD	<i>Galium odoratum</i> Sweet Woodruff	24" o.c.	42	
	HAKA	<i>Hakonechloa macro</i> 'Aureola' Golden Variegated Forest Grass	24" o.c.	31	

LEGEND	
	PROPERTY LINE
	RIGHT-OF-WAY
	EASEMENT LINE
	BUILDING OUTLINE
	BUILDING OVERHANG
	EDGE OF PAVEMENT
	STANDARD CURB AND GUTTER
	CONCRETE PAVEMENT
	ANNUAL PLANTINGS BY OWNER
	DECORATIVE STONE MULCH
	RETAINING WALL
	TREE UPLIGHTING
	BIKE RACK
	ALUMINUM EDGING

- GENERAL NOTES**
- REFER TO THE EXISTING CONDITIONS SURVEY FOR EXISTING CONDITIONS NOTES AND LEGEND.
 - ALL WORK IN THE ROW SHALL BE IN ACCORDANCE WITH THE MUNICIPAL STANDARD SPECIFICATIONS FOR PUBLIC WORKS CONSTRUCTION.
 - JSD SHALL BE HELD HARMLESS AND DOES NOT WARRANT ANY DEVIATIONS BY THE OWNER/CONTRACTOR FROM THE APPROVED CONSTRUCTION PLANS THAT MAY RESULT IN DISCIPLINARY ACTIONS BY ANY OR ALL REGULATORY AGENCIES.
 - DRAWING FOR REVIEW - NOT FOR CONSTRUCTION UNLESS OTHERWISE NOTED IN THE TITLE BLOCK.
 - THE LANDSCAPE CONTRACTOR SHALL COORDINATE ALL FINE GRADING AND TOPSOILING WITH GENERAL CONTRACTOR.
 - REFER TO "LANDSCAPE DETAILS AND NOTES" SHEET FOR ADDITIONAL DETAILS, NOTES AND SPECIFICATION INFORMATION INCLUDING MATERIALS, GUARANTEE AND EXECUTION RELATED TO LANDSCAPE PLAN.
 - CONTRACTOR SHALL REVIEW SITE CONDITIONS FOR UTILITY CONFLICTS, DRAINAGE ISSUES, SUBSURFACE ROCK, AND PLANT PLACEMENT CONFLICTS PRIOR TO PLANT INSTALLATION. REPORT ANY CONDITIONS THAT MAY HAVE ADVERSE IMPACT ON PLANTING OPERATIONS TO LANDSCAPE ARCHITECT.
 - DO NOT COMMENCE PLANTING OPERATIONS UNTIL ALL ADJACENT SITE IMPROVEMENTS, IRRIGATION INSTALLATION (IF APPLICABLE), AND FINISH GRADING ARE COMPLETE.

PLAN MODIFICATIONS:		
#	Date:	Description:
1	06.26.2023	LAND USE / UDC SUBMITTAL
2		
3		
4		
5		
6		
7		
8		
9		
10		
11		
12		
13		
14		
15		

Designed By: MRA
Reviewed By: KJY
Approved By:

SHEET TITLE:
LANDSCAPE PLAN

SHEET NUMBER:
L1.0

JSD PROJECT NO: 22-11487

