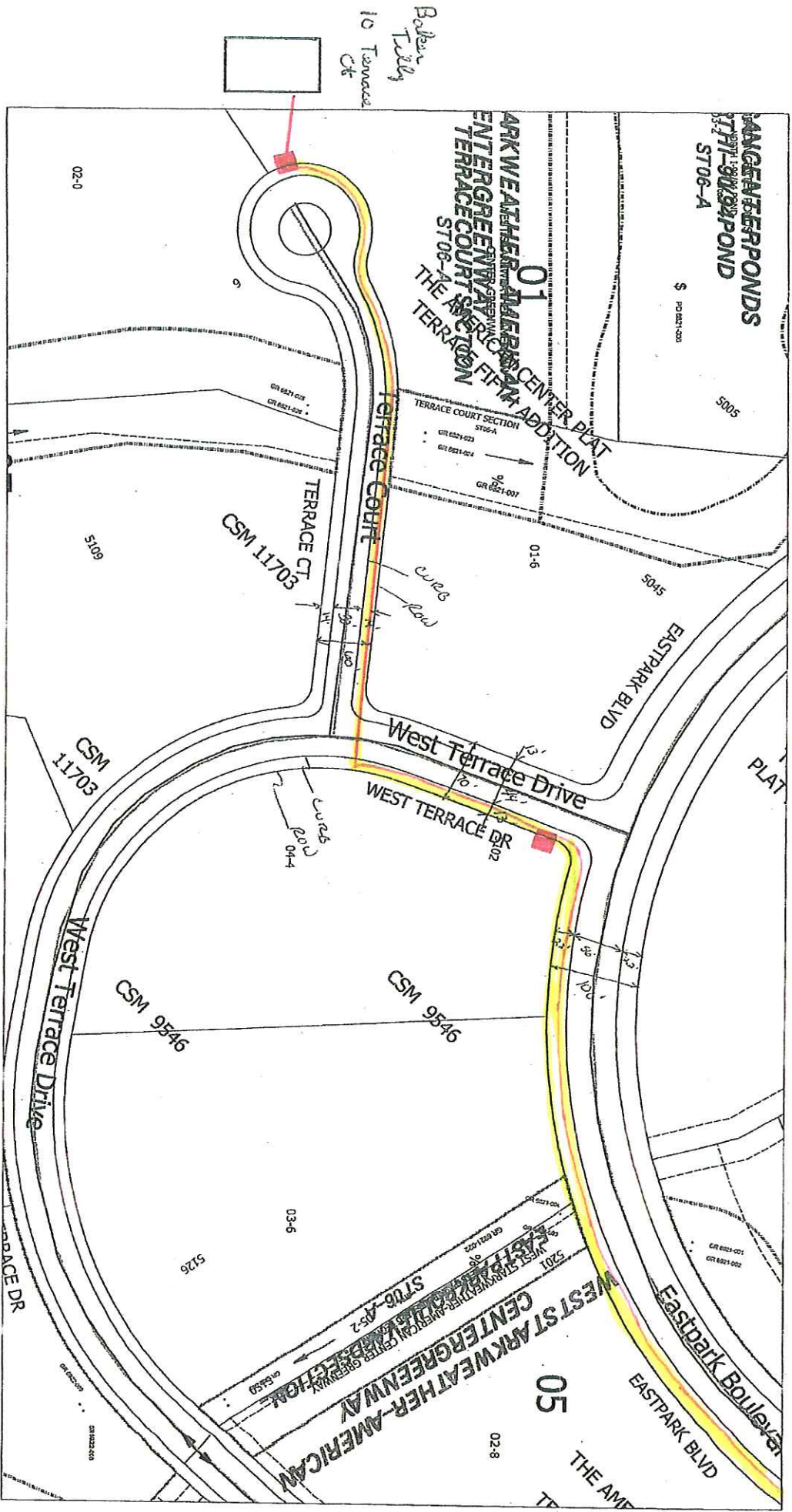


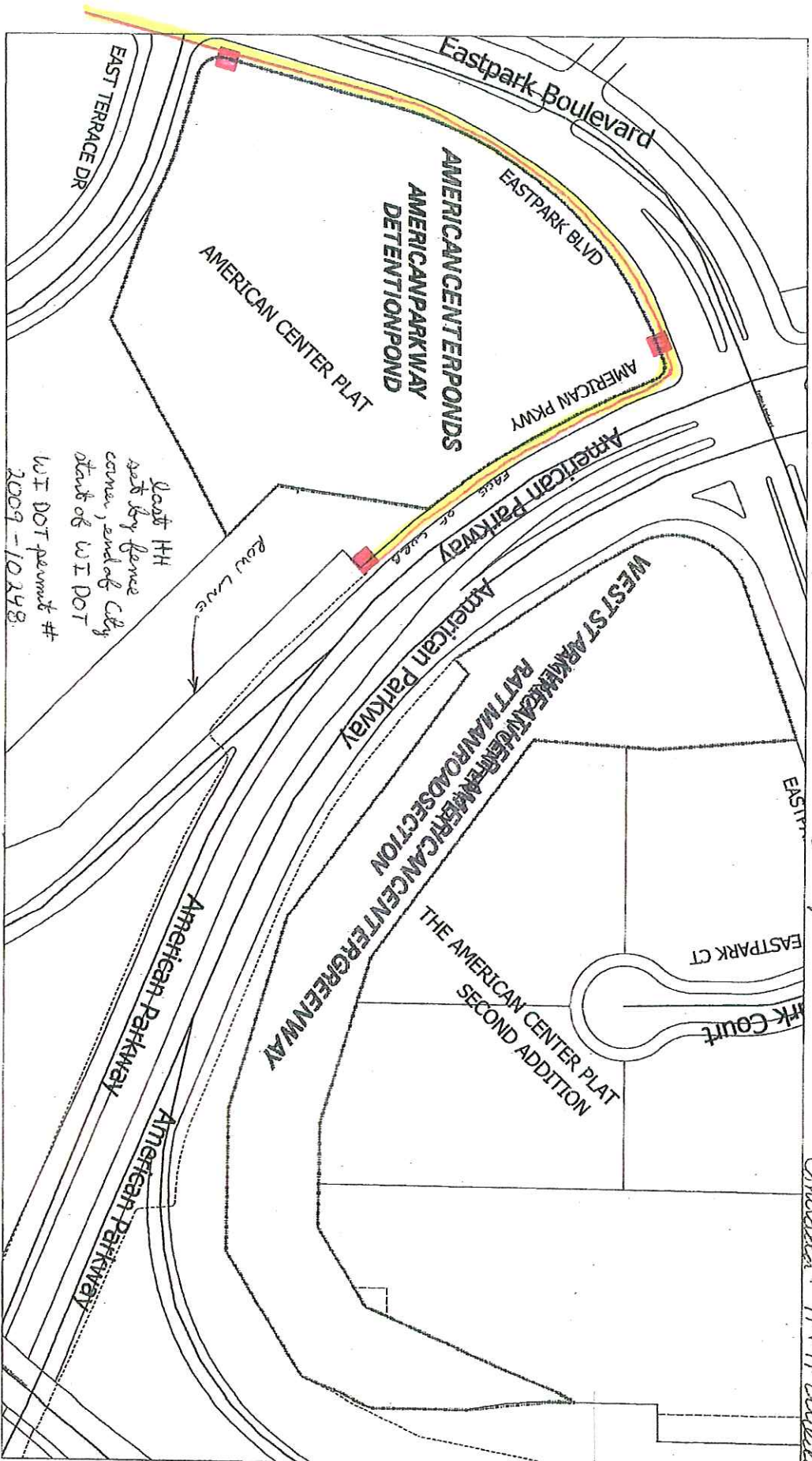
Kentucky Data Funde (RDL)
Rider to Baber Tilly Bell
Madison, WI

█ - glass mount ground needles, access points for locating purposes (HH)
- placement of ducts + fiber optic cable
Contractor: H + H Utilities



Baber
Tilly
10 Terrace
Ct

Time: 12/01/09 12:57:46 Scale: 1 In = 100 Ft
Session: C:\GTV\viewer_Sessions\LEanne.gis
City of Madison, WI - GIS/Mapping data
Printed By: onlin
Disclaimer: The City makes no representation about the accuracy of these records and shall not be liable for any damages



■ - Blue marked ground utilities, access points for locating purposes (H+H)
 - placement of ducts + fiber optic cable
 Contractor: H+H Little

East HH
 east by fence
 corner, end of City
 start of WI DOT
 WI DOT permit #
 2009-10248

WI DOT plan - we don't have a copy

Time: 12/01/09 11:44:14 Scale: 1 in = 100 Ft
 Session: C:\GIT\Viewer_Sessions\LeAnne.gis
 City of Madison, WI - GIS/Mapping data
 Printed By: ehli
 Disclaimer: The City makes no representation about the accuracy of these records and shall not be liable for any damages