

Dane County Homeless Day Shelter

Frequently Asked Questions

Why are you doing this?

Based on the experience with Occupy Madison and from talking to many street homeless and the police, we have found there are real and perceived gaps in services in the homeless community and a real desire to deliver services in a different way. There are many people who have used up the services they are allowed, multiple barriers to using current services (especially if working), some people have been permanently banned from services and others simply refuse to use services because of real or perceived concerns about the delivery of services.

What will happen at the day shelter?

First and foremost it is about basic needs that are currently covered piecemeal throughout the city and during limited hours. Restrooms, showers, lockers, phones, laundry, mail, computers, private meeting areas, phone charging areas, a place to rest if you work third shift or are ill, etc. Outside services will be welcome at the facility as needed/requested by users of the facility (medical, employment, legal etc) The hope is that the day shelter will reduce the stress of being homeless by getting routine needs met so that people can focus on larger goals (housing, jobs, etc) save bus passes for other needs. Eventually, we hope to fulfill bigger dreams to have tool lending, gardening, boot exchange, clothing, personal items, art activities, music activities, small business development, a labor coop/job service, bike repair, etc, depending upon interest.

How is this different than Porchlight/Hospitality House?

This would be a facility that houses multiple programs in one place. It would provide services to those who have been kicked out of Porchlight and/or would not use or qualify for their services.

More importantly, the philosophy would be different. Respect, dignity, honesty and cooperation would be the main themes. This proposal was developed with members of the homeless community. What happens at the day shelter would be determined by the people who actually use the services and people would assist each other with solving problems (ex. how do I use my cell phone, etc.) Currently people who are homeless in the community are excited about this proposal and are participating in the process to help make it happen. In working with Captain Gloede he has repeatedly talked about the difference between hand outs and creating a community and cooperation which leads to better outcomes in the community.

What are you looking for in a location?

Close to downtown and other services, but not on the square or in the State St. area. Preferably Near West. We hope to be on a bus line and bikable. Segregated from residential homes and customer based businesses.

What hours would this facility be open?

As many as possible depending upon the funding and volunteers. Currently, there is a HUGE need for weekend services (particularly Sunday and holidays), early morning and later afternoon services as well. However, we will need to start out modestly and hopefully expand from there.

Will you serve meals?

Very unlikely unless we got a building that already had a commercial kitchen. We may, on special occasions or for special events have limited food available, but this would not be a regular activity in the facility.

What qualifications will staff have?

Again, it depends on funding, but our goal is to have at least one staff person with mental health experience and one staff person with AODA experience. Our ideal staffing would be 5 full-time people, but we understand this is a big goal and we will need to build up to the ideal staffing rate.

What is the budget?

It depends upon the building we get (square footage), if we rent or own, and other factors related to programming. This is a project in the making, and we will raise as much as we can to operate the building for as many hours as we can realistically provide.

Will this help with the chronic alcoholics on State St.?

Not directly and immediately, but it will help in incremental ways. We won't ban people who have been using as long as they are not disruptive. These folks also need places to store things, showers, a place to charge their phones, etc. As they use our facility and we get to know people as individuals we hope to develop a level of trust that makes it so that when they are ready for services, we are there to help them get connected. Meanwhile, if we can provide some constructive activities for people to engage in, we believe this is a good first step.

Who else is involved or supportive?

People who are currently and formerly homeless
Captain Gloede and Chief Wray
Dane County Board Supervisors
Mark Wilson, Bethel Homeless Support Services
Donna Asif, Madison Homelessness Initiative (Project Bubbles)
Occupy Madison
Operation Welcome Home
Madison Urban Ministry

We have spoken with downtown business owners, donors, the BID and Downtown Madison Inc.

We have a long list of people to do outreach to continue to get support for the project.

How will you work with other non-profits?

The Tenant Resource Center is a member of the Homeless Services Consortium and already provides multiple resources to people looking for emergency and transitional housing. In order to do this accurately, we frequently have them review our materials for accuracy. Additionally, if awarded the Homeless Services Coordination program, we will be working closely with them to make sure that we have accurate counts of their inventory of available services and are aware of how long their waiting lists are.

How would the city benefit from funding a facility like this?

We believe this day shelter would cut back on police calls, that we could be an important partner with the Madison Police Department (and others), that we could assist downtown businesses with some of their concerns and that we would be a warming and cooling shelter for the homeless that currently does not exist.

Do you have examples of this working in other cities?

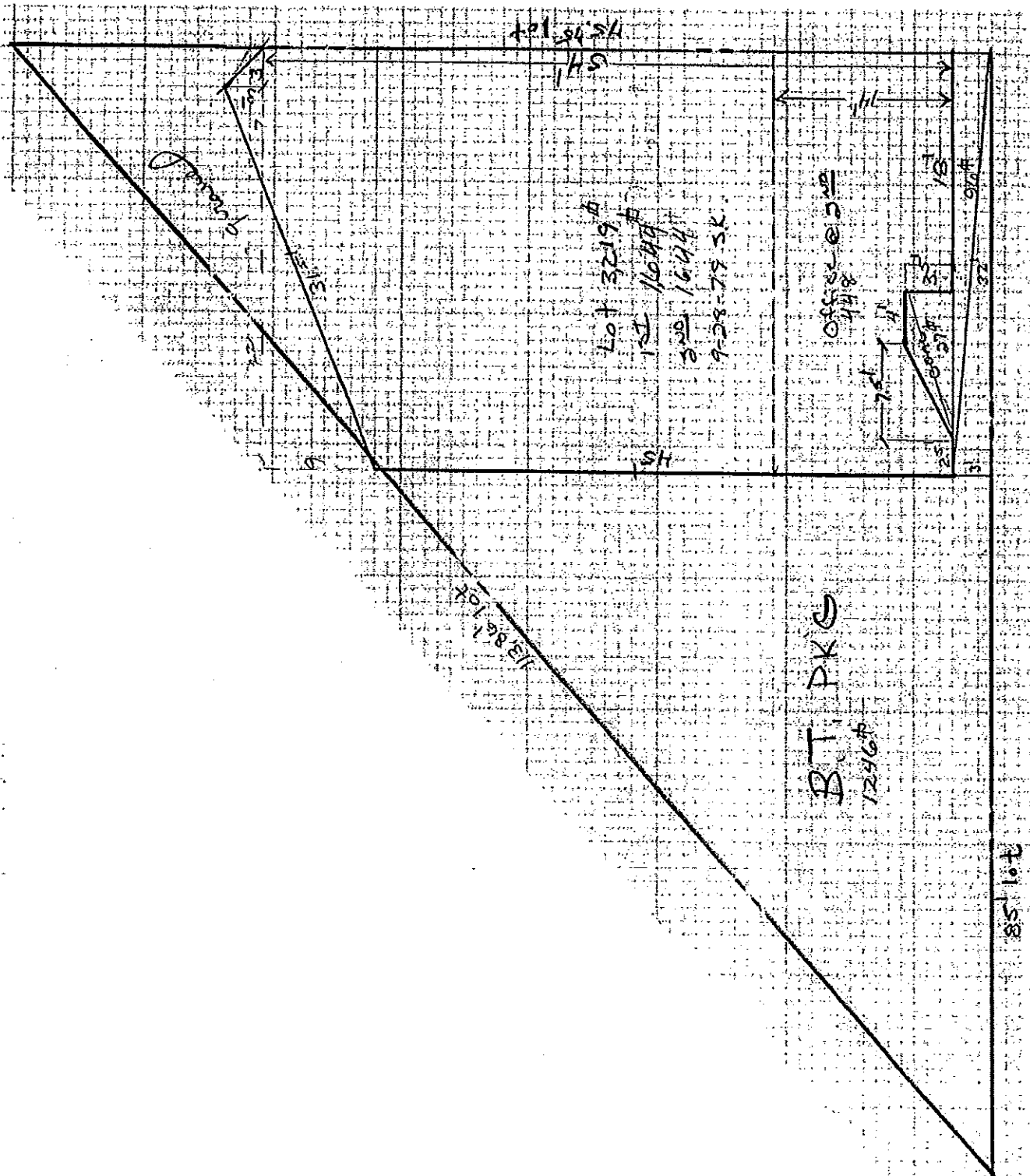
There are hundreds of examples throughout the United States in both big and small communities, some on grander scales than others, but this is not a new concept.

Other

- Madison Urban Ministry Report
- Dane County Board Press Release

FOR SALE

1440 E. WASHINGTON AVE. SITE PLAN

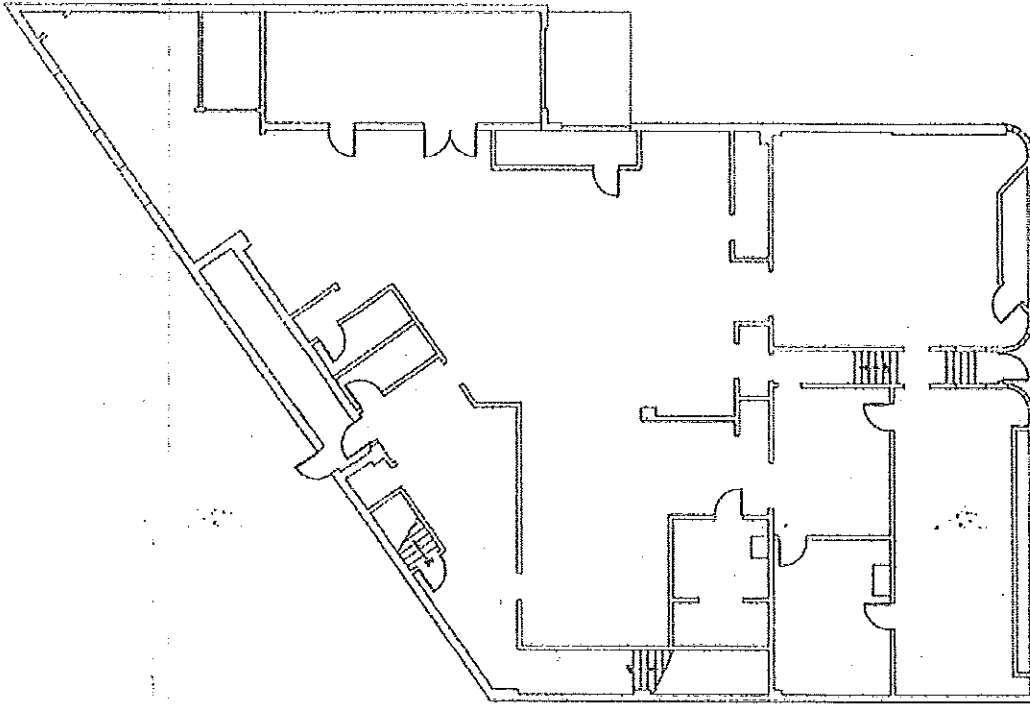


E. WASHINGTON AVE.

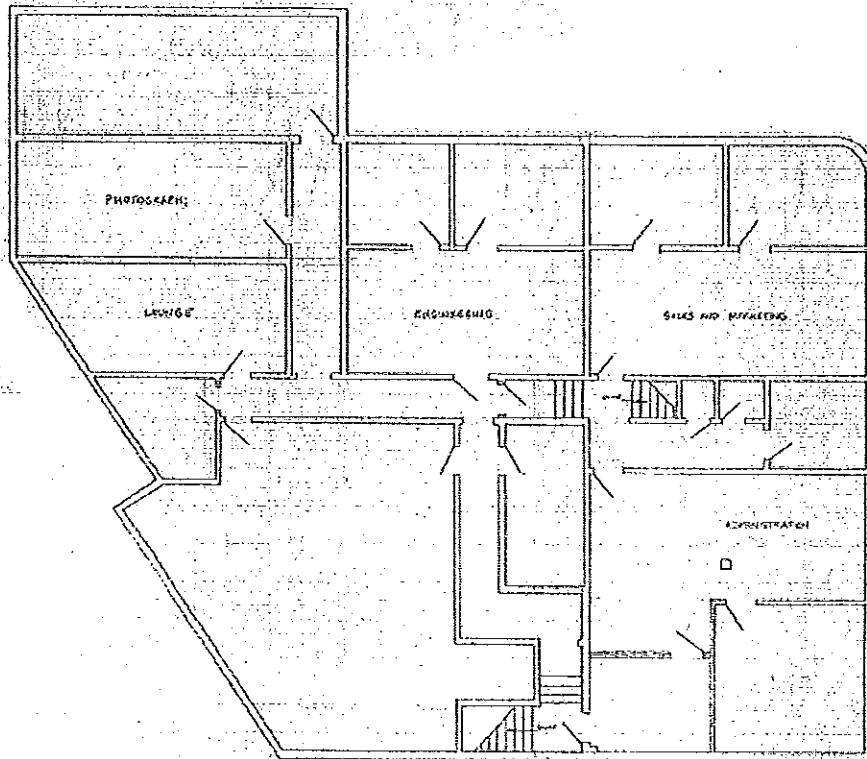
1440 and 1444 E. WASHINGTON AVE., MADISON, WI

FOR SALE

1444 E. WASHINGTON AVE. FLOOR PLAN - FIRST FLOOR



1444 E. WASHINGTON AVE. FLOOR PLAN - SECOND FLOOR



Lee & Associates®
COMMERCIAL REAL ESTATE SERVICES

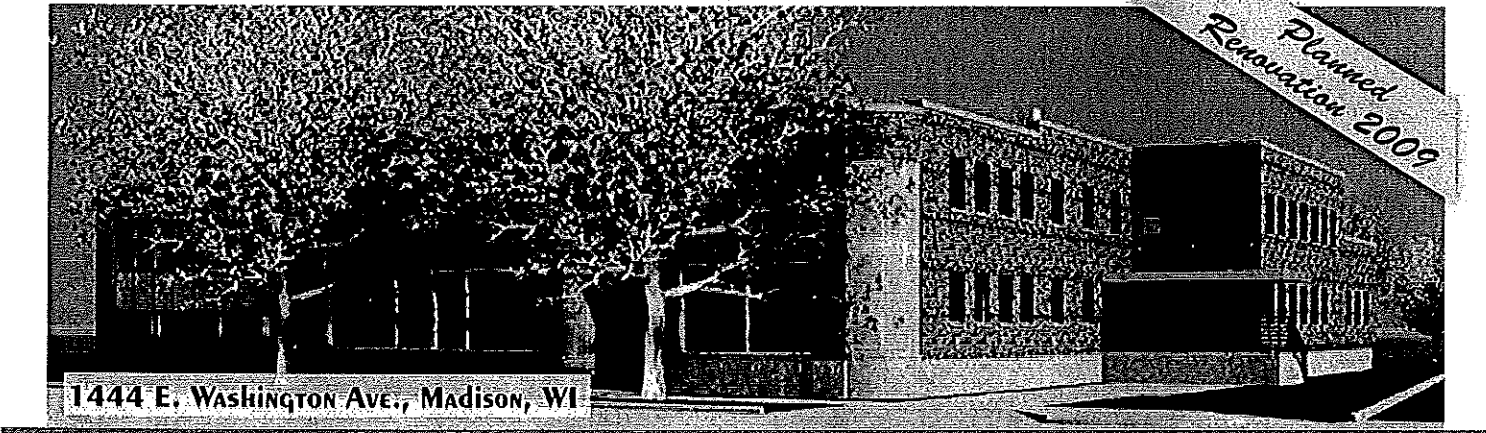
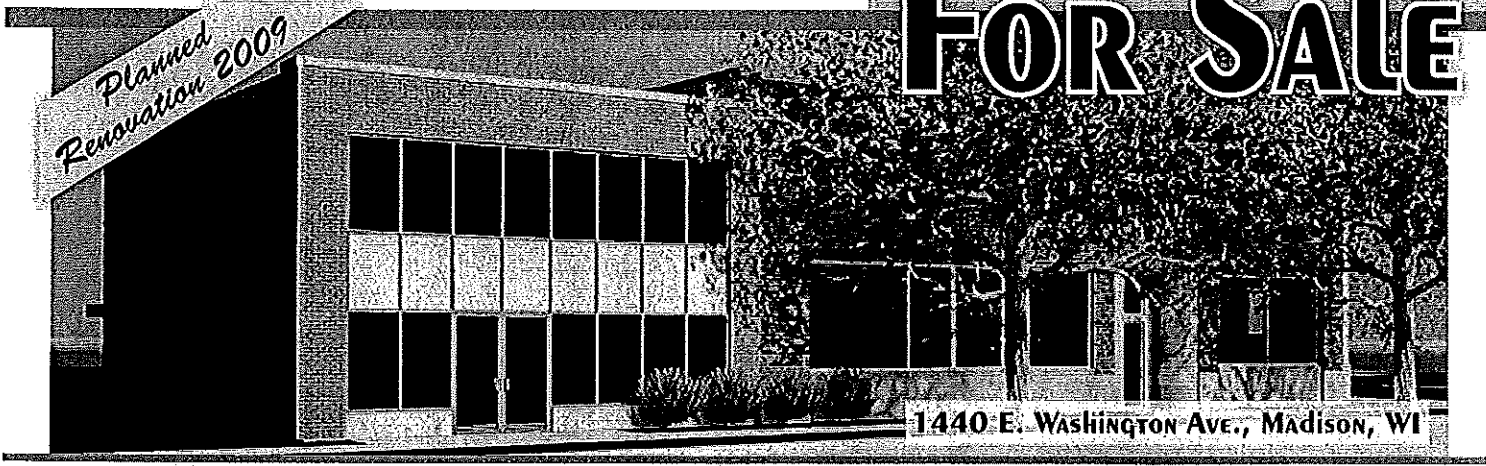
BLAKE GEORGE

Direct: (608) 327-4005; Fax: (608) 327-4040; bgeorge@lee-associates.com

62509 The information contained herein is based on estimates and assumptions and is presented for illustration purposes only. No representations, warranties or guarantees of any kind are made.

1440 AND 1444 E. WASHINGTON AVE., MADISON, WI

FOR SALE



1440 E. Washington Ave.

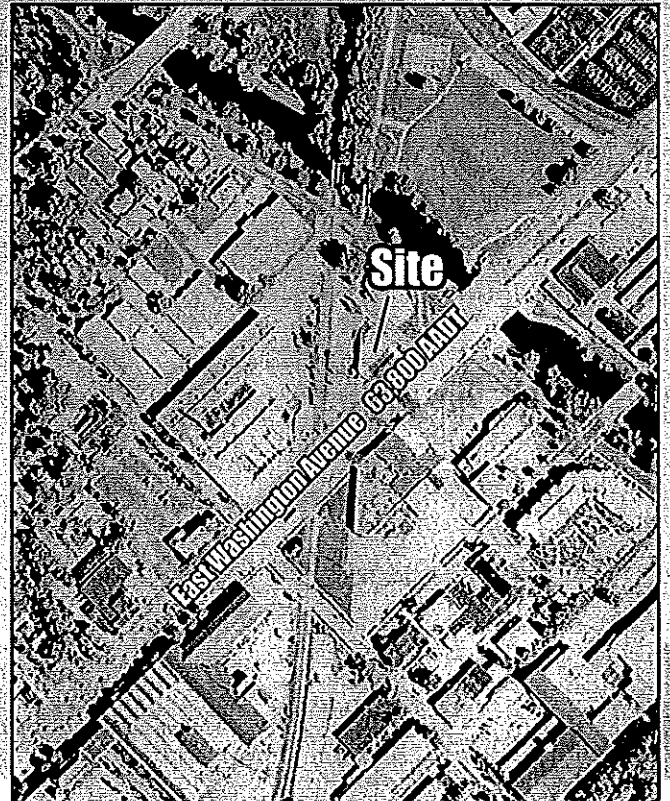
- 3,288 Total Sq. Ft. Available
 - 1,644 Sq. Ft. Available on First Floor
 - 1,644 Sq. Ft. Available on Second Floor
- 448 Sq. Ft. of Office Space on Second Floor
- 1,196 Sq. Ft. of Storage Space on Second Floor
- 3,219 Sq. Ft. Lot Size
- 4 Parking Stalls Available on Site

1444 E. Washington Ave.

- Approx. 10,000 Total Sq. Ft. Available
 - Approx. 5,000 Sq. Ft. at Street Level
 - Approx. 5,000 Sq. Ft. on Second Floor
- 9,451 Sq. Ft. Lot Size
- Enclosed Dock, Full Basement & Freight Elevator

Sale Price for both Properties: \$575,000

Demographics	1 Mile	3 Miles	5 Miles
Population	15,112	86,545	168,373
Avg. Household Income	\$60,308	\$51,731	\$62,304



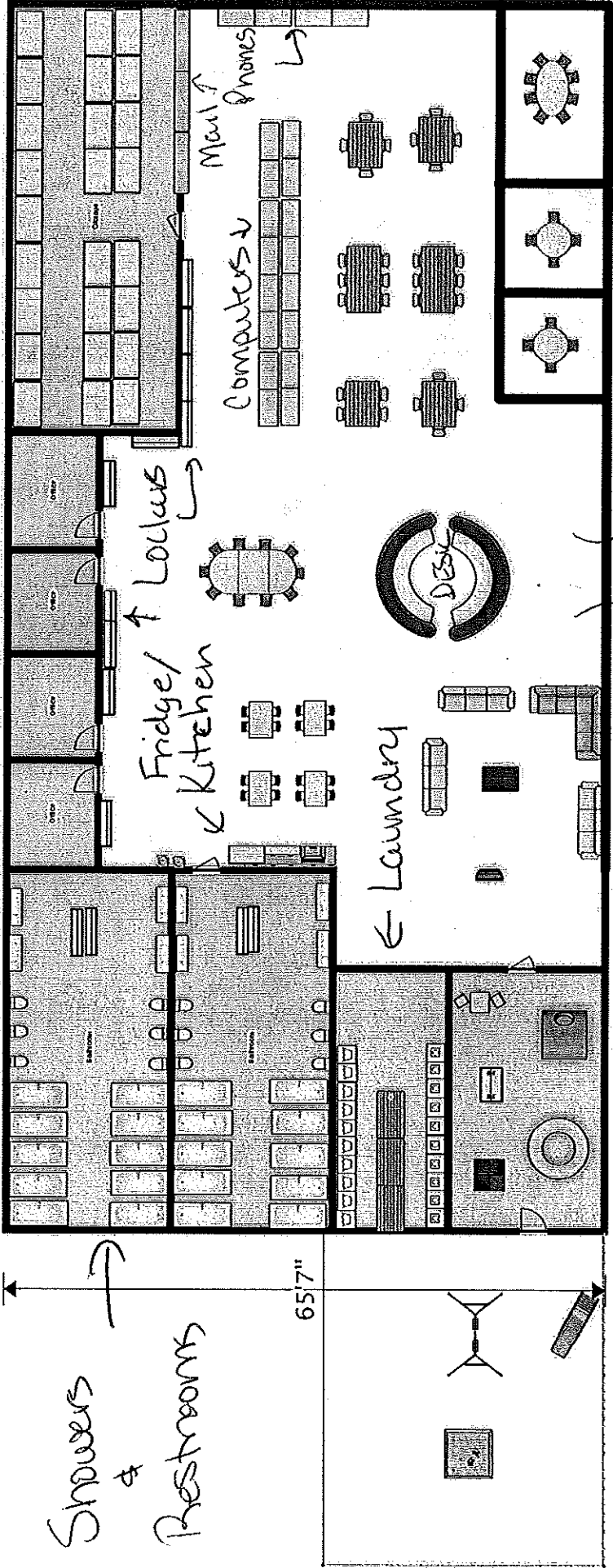
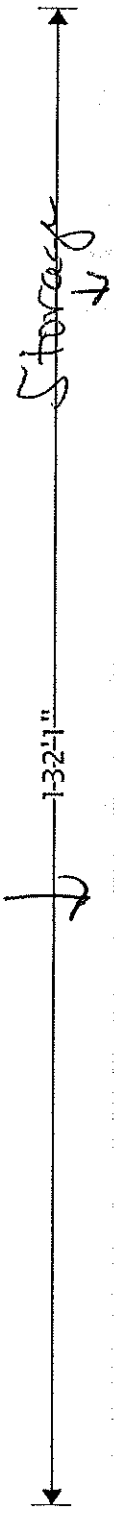
Lee & Associates®
COMMERCIAL REAL ESTATE SERVICES

BLAKE GEORGE

Direct: (608) 327-4005; Fax: (608) 327-4040; bgeorge@lee-associates.com

62509 The information contained herein is based on estimates and assumptions and is presented for illustration purposes only. No representations, warranties or guarantees of any kind are made.

Offices



Showers & Restrooms

Fridge/Kitchen
Laundry

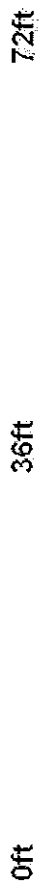
65'7"

Play area

Lounge

Front Door

Room for meetings,
Services, private
space



Approx 8,000 sq ft.