

LANDSCAPE WORKSHEET

I. Number of Trees Required

The number of trees required for a parking lot is based on the number of parking stalls. Using the Schedule for Required Trees on the reverse side of this worksheet, determine the number of trees required. (Example: One tree is required for 10 parking stalls.)

Landscape requirements for storage areas are determined by dividing the total square footage of the storage area by (300) square feet. This converts area to stalls. (Example: 10,000 square feet is equivalent to (33) stalls or (3) trees and (160) points.)

Number of Parking Stalls **92**

Total Square Footage of the Storage Area Divided by Three Hundred (300) Square Feet **1**

Number of Canopy Shade Trees Required (2" - 2 1/2" Caliper) **8**

II. Number of Landscape Points Required

The number of points required is also based on the number of parking stalls. Using the Point Schedule for Landscape Elements on the reverse side of this worksheet, determine the number of points required. (Example: 49.5 points are required for 10 stalls. A point fraction of (.5) or less may be disregarded, while a fraction in excess of (.5) must be counted as one point. Thus: 49.5 points would be rounded down to 49.0 points required.)

The number of points required for loading areas is (75) points for each loading berth. **75**

Number of Points Required (See Schedule on reverse side) **421**

TOTAL 496

Tabulation of Points and Credits

Indicate below the quantity and points for all pertinent landscape elements. Also, credit information for boundary screening and any existing elements to be retained.

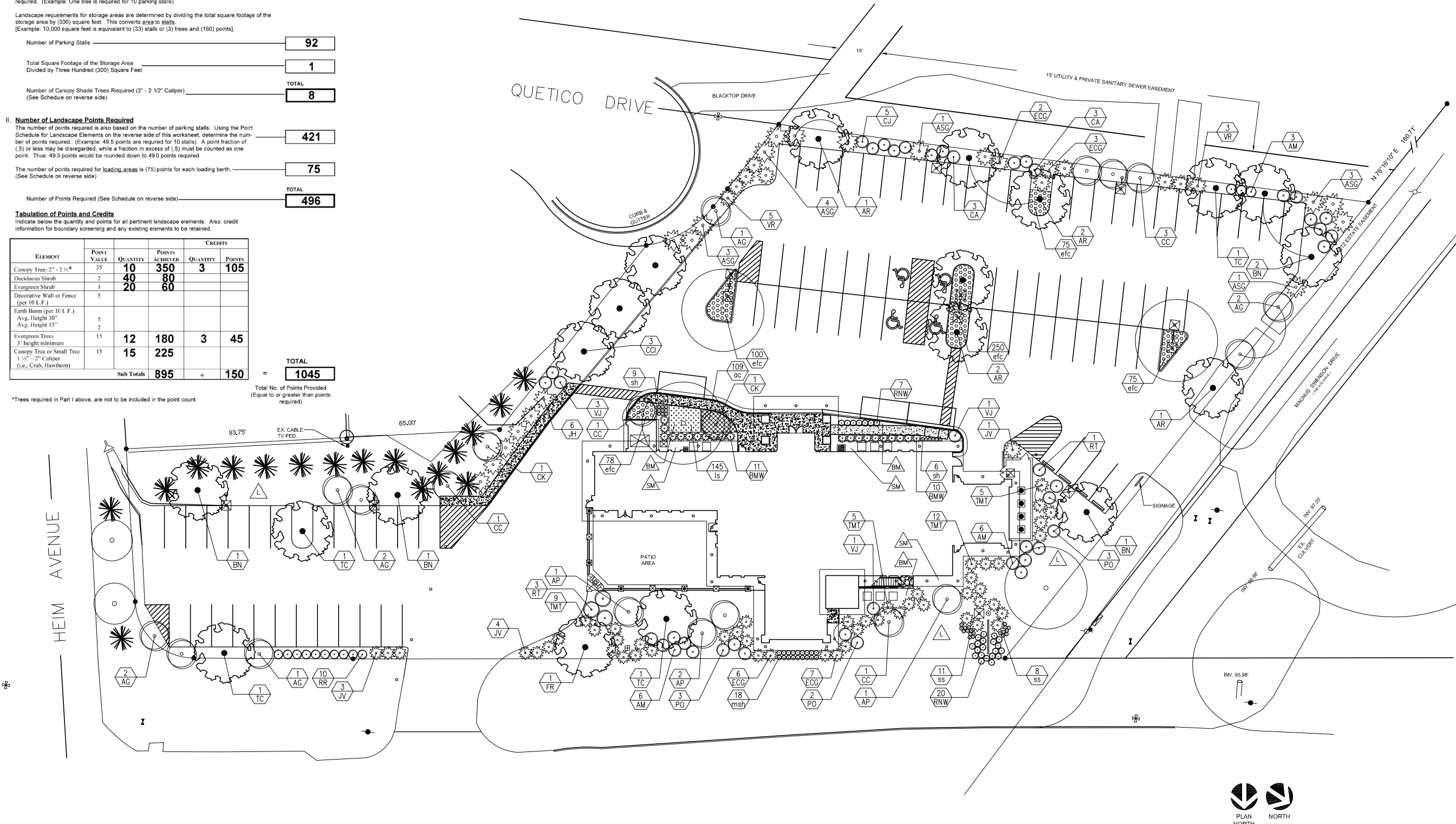
ELEMENT	POINT VALUE	QUANTITY	POINTS ACHIEVED	CREDITS	
				QUANTITY	POINTS
Canopy Tree: 2" - 2 1/2"	35	10	350	3	105
Deciduous Shrub	2	40	80		
Evergreen Shrub	3	20	60		
Decorative Wall or Fence (per 10 L.F.)	5				
Earth Berm (per 10 L.F.)					
Avg. Height 30"	5				
Avg. Height 15"	2				
Evergreen Trees 3' height minimum	15	12	180	3	45
Canopy Tree or Small Tree 1 1/2" - 2" Caliper (i.e., Crab, Hawthorn)	15	15	225		
Sub Totals		895		+	150
				TOTAL	1045

Total No. of Points Provided (Equal to or greater than points required) **1045**

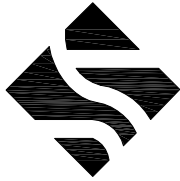
*Trees required in Part I above, are not to be included in the point count.

ISSUE DATE:
 JANUARY 31, 2012
 CITY REVIEW

REVISION:



J. STUART TODD, INC.
 ARCHITECTS - INTERIORS - MAUSOLEUM - CEMETERY - PLANNING
 WWW.JSTUARTTODD.COM
 2919 WELBORN, DALLAS, TEXAS 75219, 214.922.4033
 © JSTUART TODD, INC.



THE CRESS CENTER
 6021 UNIVERSITY AVENUE
 MADISON, WISCONSIN

SHEET NO.
L1.0
 JOB NUMBER: 11070



1 PLANTING PLAN
 SCALE: 1" = 20'