



929 East Washington Avenue

Dual Brand Hotel: Hilton Tempo and Homewood Suites

Urban Design Initial/Final Meeting

January 10, 2024





Project site along E. Washington Ave. (Phase 1 Parking Ramp is visible in background)

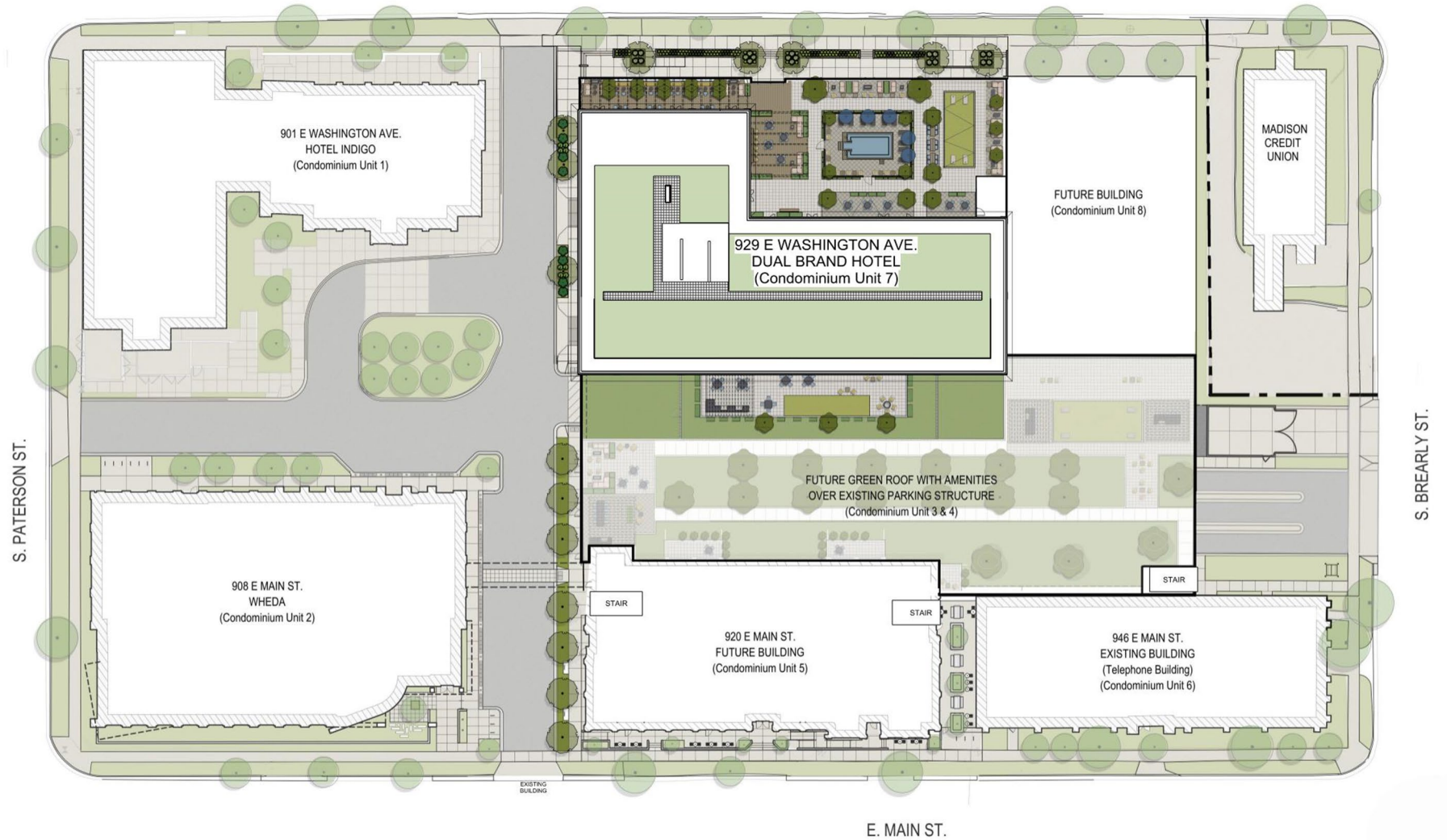


Madison Credit Union at E. Washington Ave. and S. Brearly St.



Hotel Indigo at E. Washington Ave. and S. Paterson St.

E. WASHINGTON AVE.



S. PATERSON ST.

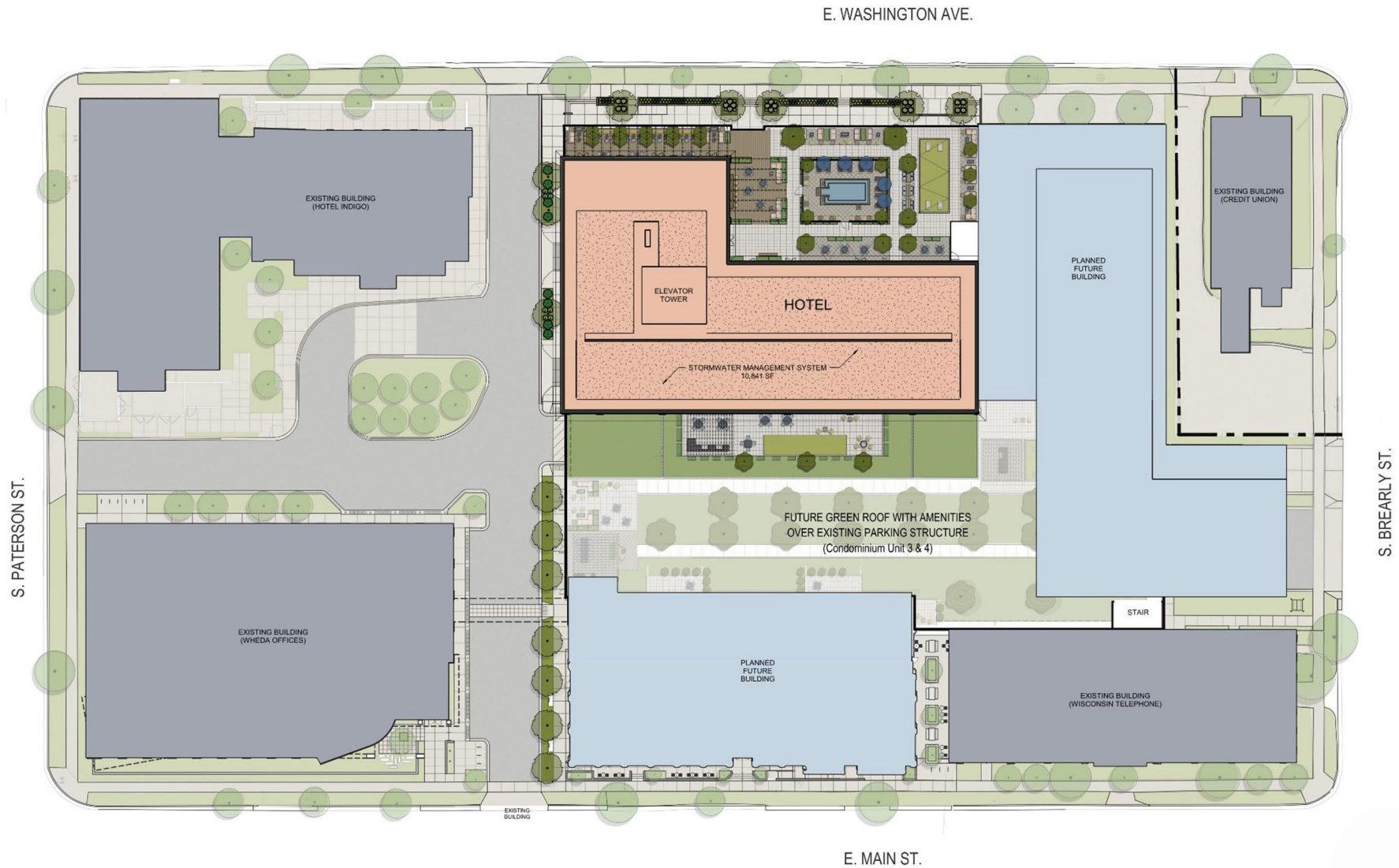
S. BREARLY ST.

E. MAIN ST.

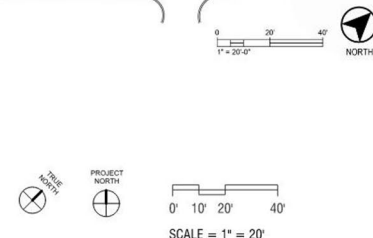


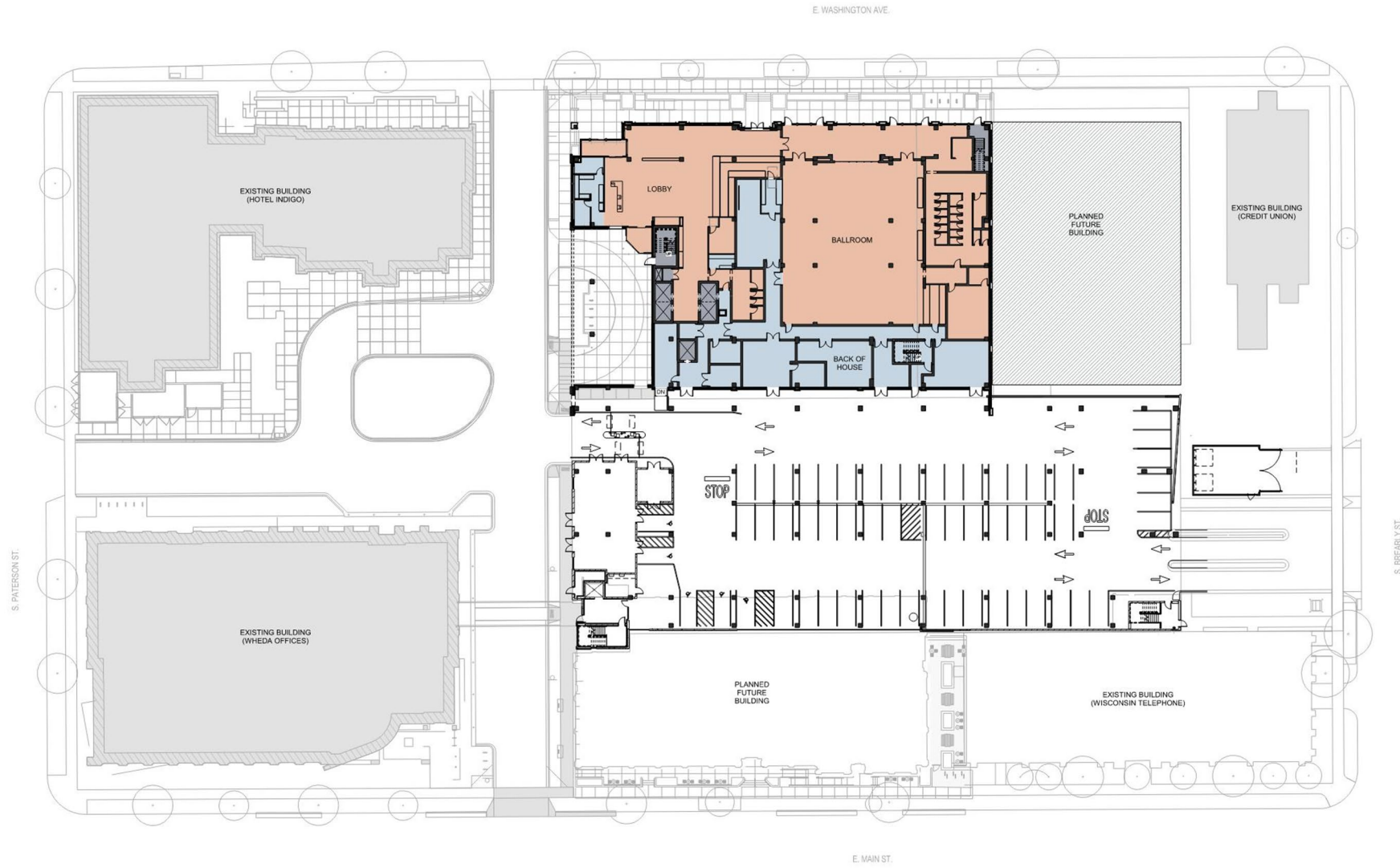
OVERALL BLOCK SITE PLAN
 929 East Washington Avenue Hotel - 2016.36.02.4
 01/10/24





BLOCK MASTER PLAN WITH FUTURE BUILDINGS
 929 East Washington Avenue Hotel - 2016.36.02.4
 01/10/24



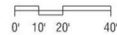


SITE PLAN WITH FIRST FLOOR
929 East Washington Avenue Hotel - 2016.36.02.4
 01/10/24





SIXTH FLOOR ROOF TERRACE PLAN
 929 East Washington Avenue Hotel - 2016.36.02.4
 01/10/24



SCALE = 1" = 20'





TYPICAL GUEST ROOM FLOOR PLAN
 929 East Washington Avenue Hotel - 2016.36.02.4
 01/10/24





Previous Design



Proposed Design



Previous Design



Proposed Design



HOMEWOOD
SUNBELT

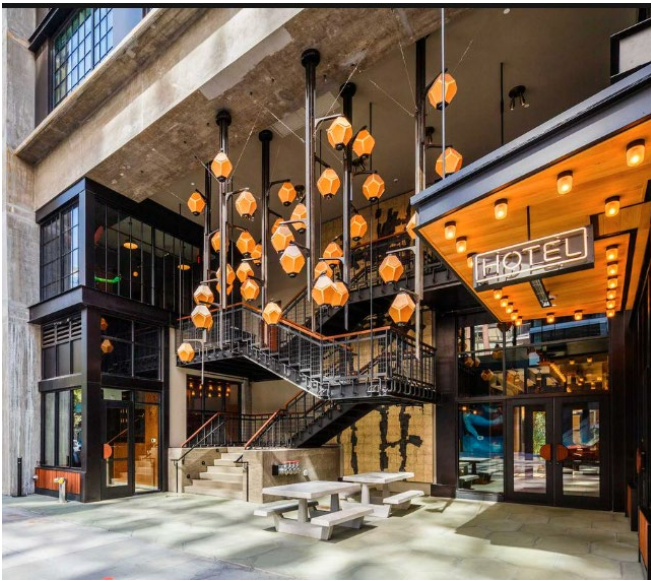
Restaurant







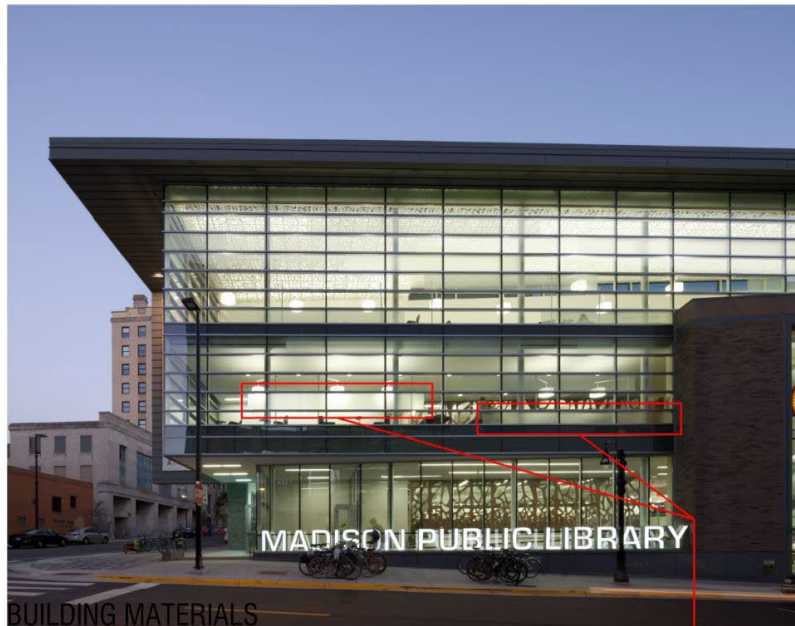
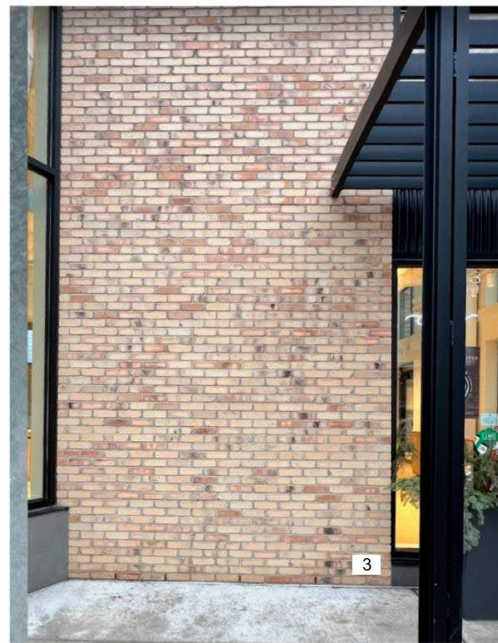




Exterior Material Inspiration



- 1 Black Precast Panels
- 2 Black Granite Stone Base
- 3 Brick - Old Chicago
- 4 Brick - Black
- 5 Aluminum Window Frames - Black Anodized
- 6 Painted Metal Panels and Louvers - Matte Black
- 7 Steel - Painted Black
- 8 Translucent Glass - Parking Floors



BUILDING MATERIALS

929 East Washington Avenue Hotel - 2016.36.02.4

01/10/24

Translucent glass lit up from behind at night.



- 3
- 1
- 5
- 8
- 6
- 7
- 2

Decorative custom light fixture placeholder.

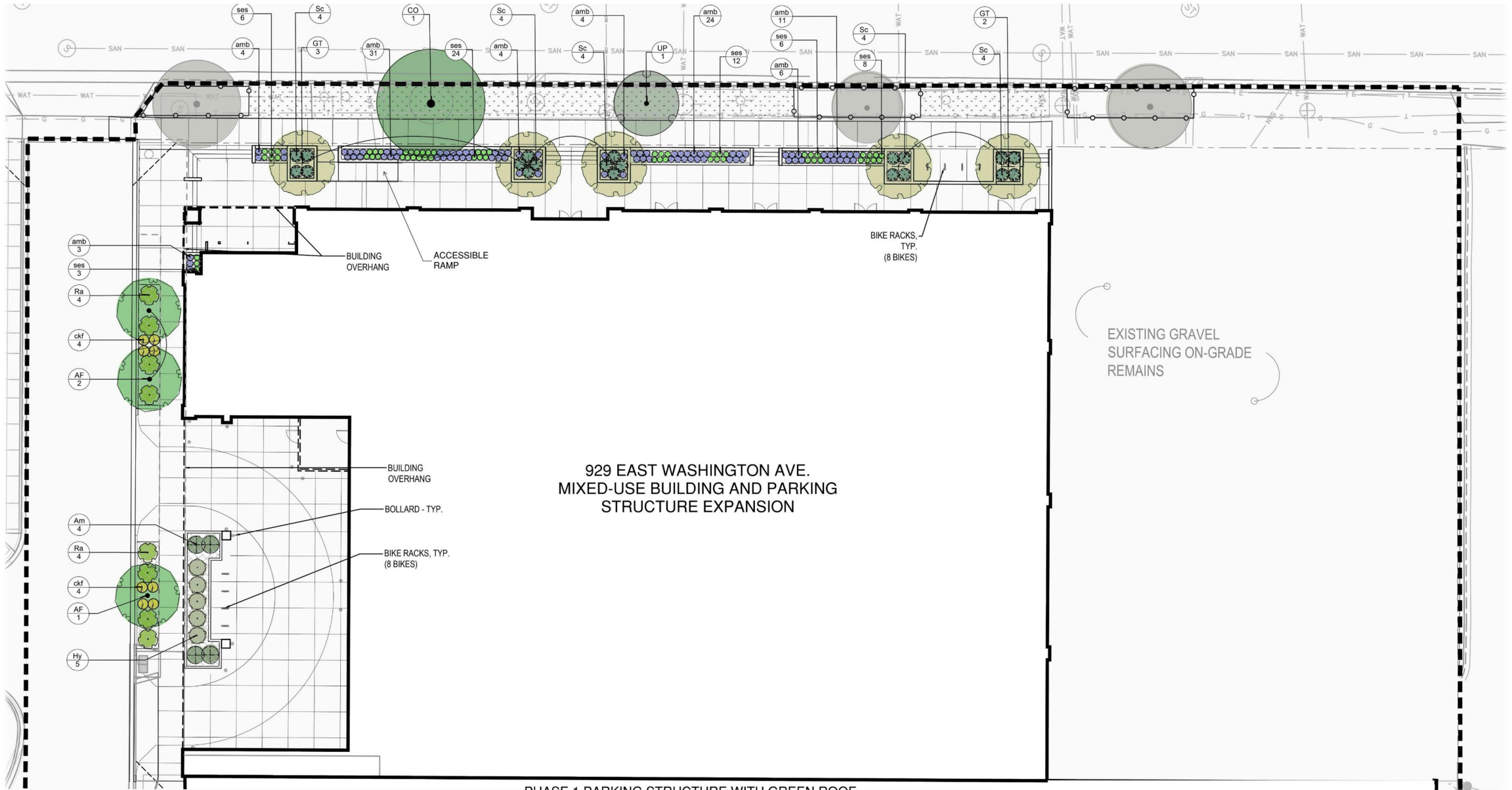




Appendix 929 East Washington Avenue

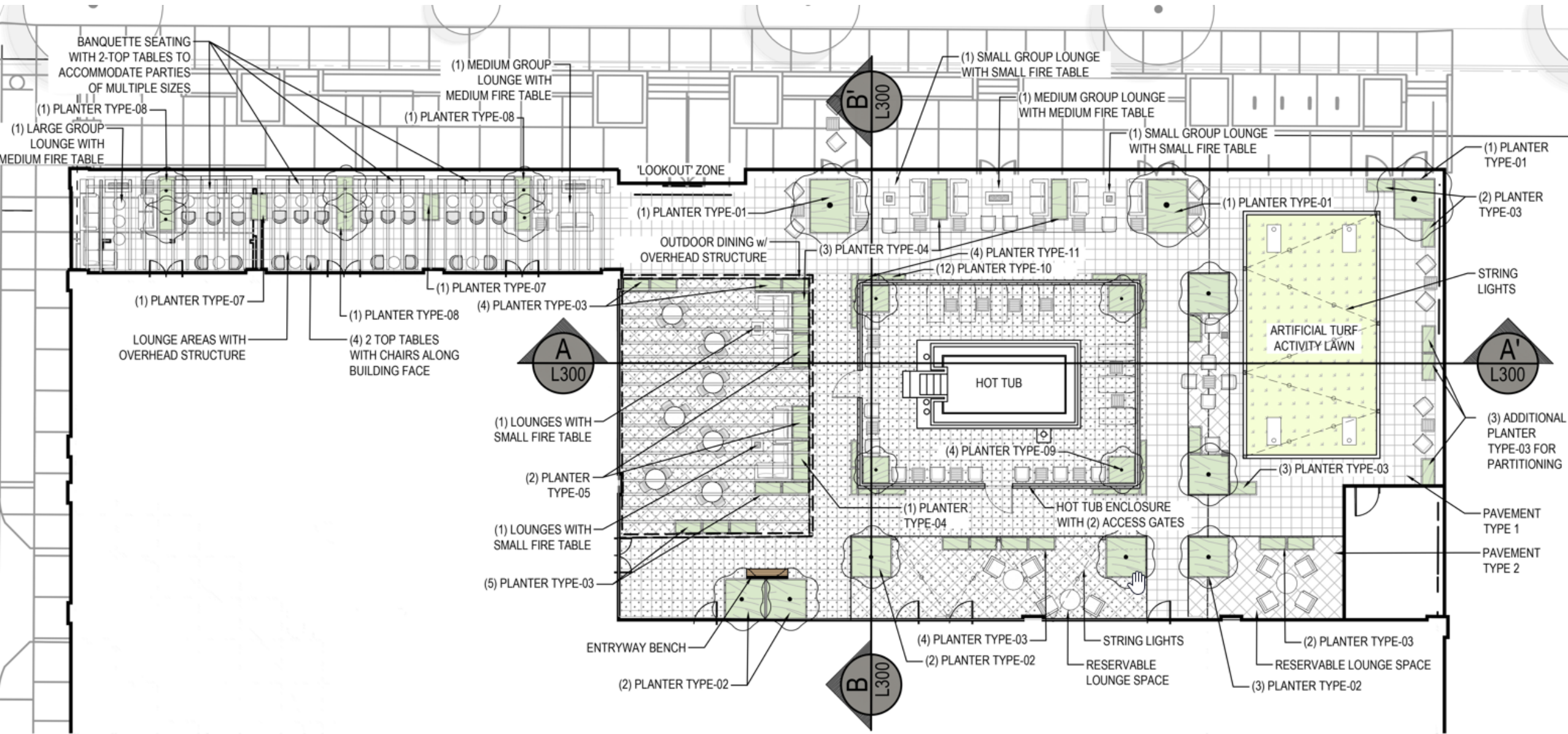
Dual Brand Hotel: Hilton Tempo and Homewood Suites Urban Design Initial/Final Meeting January 10, 2024





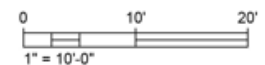
1 PLANTING & LANDSCAPE RESTORATION PLAN
SCALE: 1" = 10'-0" (AT 30"x42" FULL SIZE SHEET)



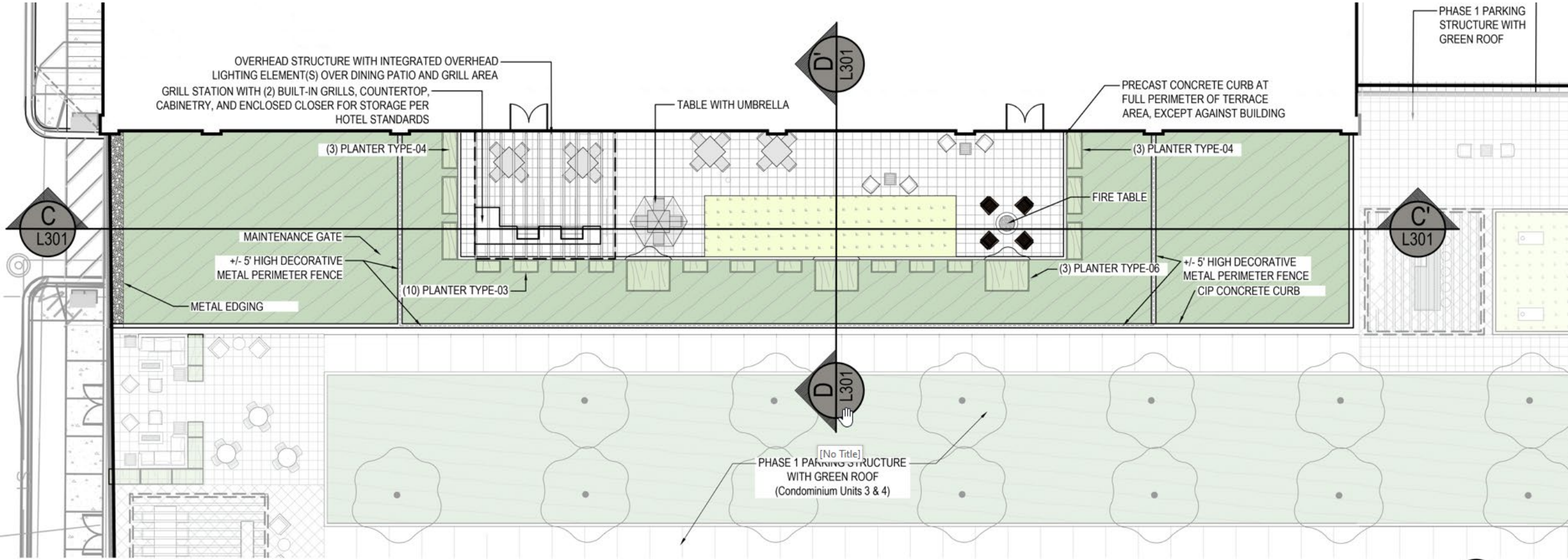


6TH FLOOR NORTH ROOF TERRACE PLAN

SCALE: 1" = 10'-0" (AT 30"x42" FULL SIZE SHEET)



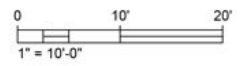
NORTH

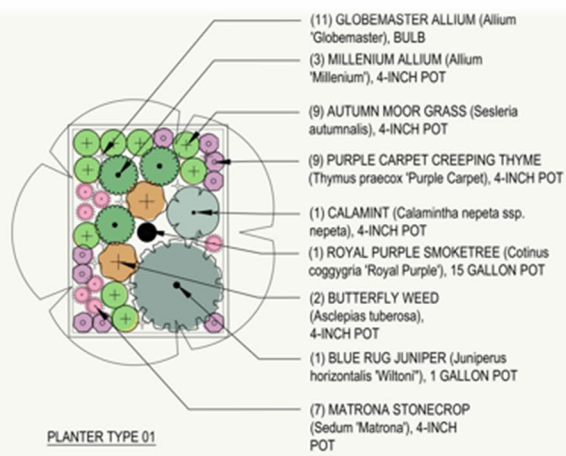


1

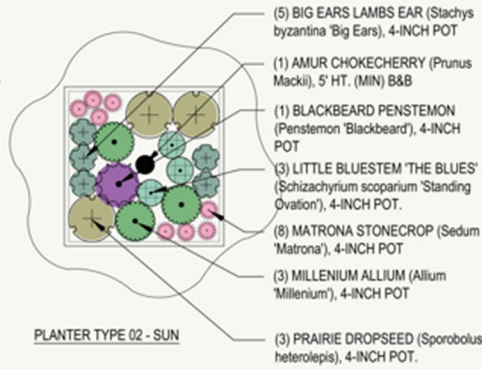
6TH FLOOR SOUTH ROOF TERRACE PLAN

SCALE: 1" = 10'-0" (AT 30"x42" FULL SIZE SHEET)

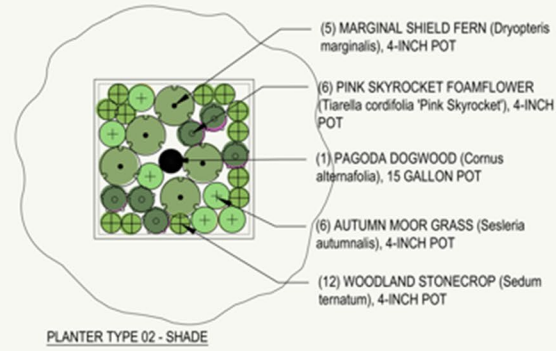




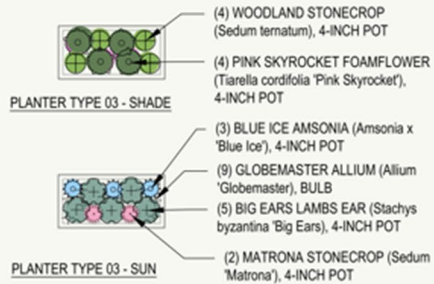
PLANTER TYPE 01



PLANTER TYPE 02 - SUN

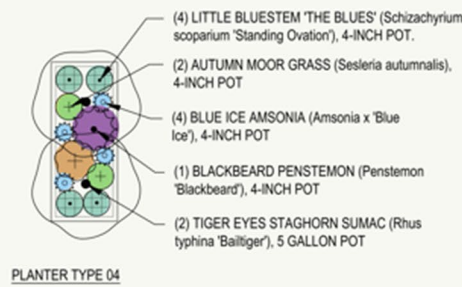


PLANTER TYPE 02 - SHADE

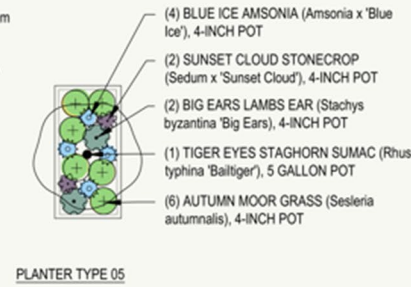


PLANTER TYPE 03 - SHADE

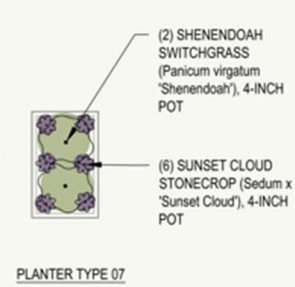
PLANTER TYPE 03 - SUN



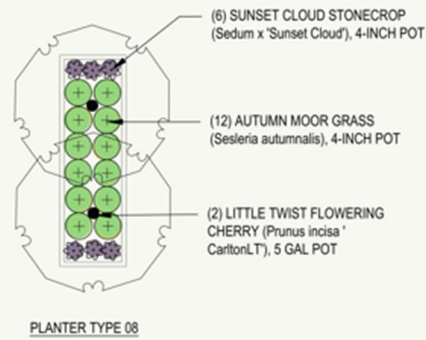
PLANTER TYPE 04



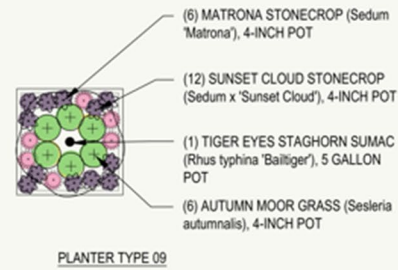
PLANTER TYPE 05



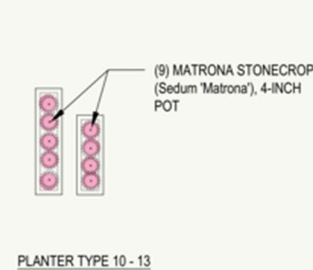
PLANTER TYPE 07



PLANTER TYPE 08



PLANTER TYPE 09



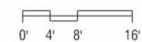
PLANTER TYPE 10 - 13



ELEVATION KEY NOTES

- 1 BRICK VENEER
- 2 PAINTED METAL PANEL, MATTE BLACK
- 3 PRECAST CONCRETE BAND, BLACK
- 4 CONCEALED FASTENER FORMED METAL PANEL, MATTE BLACK
- 5 STEEL CHANNEL, PAINTED MATTE BLACK
- 6 ALUMINUM OR FIBERGLASS COMPOSITE WINDOW SYSTEM, BLACK
- 7 ALUMINUM OR STEEL TRELLIS
- 8 ALUMINUM STOREFRONT SYSTEM, BLACK
- 9 CAST CONCRETE WITH BOARD FORMED LINER
- 10 ALUMINUM HANDRAIL, BLACK
- 11 STEEL TURNBUCKLE AND CROSS-BRACING
- 12 METAL CORNICE, MATTE BLACK
- 13 PAINTED STEEL CHANNEL COLUMN, BLACK
- 14 EXISTING PARKING STRUCTURE
- 15 METAL PANELS SALVAGED FROM PARKING STRUCTURE
- 16 STONE OR CAST STONE BASE COURSE, BLACK
- 17 GLASS AT GARAGE LEVELS TO BE TRANSLUCENT
- 18 METAL LOUVERED PANELS, BLACK

E. WASHINGTON AVE. BUILDING ELEVATION
 929 East Washington Avenue Hotel - 2016.36.02.4
 01/10/24

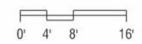




- FAA HEIGHT LIMIT (100%) 257'-0"
- ROOF 252'-4"
- FIFTEENTH FLOOR 240'-0"
- FOURTEENTH FLOOR 230'-0"
- THIRTEENTH FLOOR 220'-0"
- TWELFTH FLOOR 210'-0"
- ELEVENTH FLOOR 200'-0"
- TENTH FLOOR 190'-0"
- NINTH FLOOR 180'-0"
- EIGHTH FLOOR 170'-0"
- SEVENTH FLOOR 160'-0"
- SIXTH FLOOR 148'-5"
- FIFTH FLOOR 137'-9"
- FOURTH FLOOR 128'-6"
- THIRD FLOOR 119'-3"
- SECOND FLOOR 109'-7"
- FIRST FLOOR (BS2) 100'-0"

- ELEVATION KEY NOTES**
- 1 BRICK VENEER
 - 2 PAINTED METAL PANEL, MATTE BLACK
 - 3 PRECAST CONCRETE BAND, BLACK
 - 4 CONCEALED FASTENER FORMED METAL PANEL, MATTE BLACK
 - 5 STEEL CHANNEL, PAINTED MATTE BLACK
 - 6 ALUMINUM OR FIBERGLASS COMPOSITE WINDOW SYSTEM, BLACK
 - 7 ALUMINUM OR STEEL TRELLIS
 - 8 ALUMINUM STOREFRONT SYSTEM, BLACK
 - 9 CAST CONCRETE WITH BOARD FORMED LINER
 - 10 ALUMINUM HANDRAIL, BLACK
 - 11 STEEL TURNBUCKLE AND CROSS-BRACING
 - 12 METAL CORNICE, MATTE BLACK
 - 13 PAINTED STEEL CHANNEL COLUMN, BLACK
 - 14 EXISTING PARKING STRUCTURE
 - 15 METAL PANELS SALVAGED FROM PARKING STRUCTURE
 - 16 STONE OR CAST STONE BASE COURSE, BLACK
 - 17 GLASS AT GARAGE LEVELS TO BE TRANSLUCENT
 - 18 METAL LOUVERED PANELS, BLACK

NORTHEAST BUILDING ELEVATION
 929 East Washington Avenue Hotel - 2016.36.02.4
 01/10/24





ELEVATION KEY NOTES

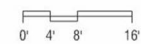
- 1 BRICK VENEER
- 2 PAINTED METAL PANEL, MATTE BLACK
- 3 PRECAST CONCRETE BAND, BLACK
- 4 CONCEALED FASTENER FORMED METAL PANEL, MATTE BLACK
- 5 STEEL CHANNEL, PAINTED MATTE BLACK
- 6 ALUMINUM OR FIBERGLASS COMPOSITE WINDOW SYSTEM, BLACK
- 7 ALUMINUM OR STEEL TRELLIS
- 8 ALUMINUM STOREFRONT SYSTEM, BLACK
- 9 CAST CONCRETE WITH BOARD FORMED LINER
- 10 ALUMINUM HANDRAIL, BLACK
- 11 STEEL TURNBUCKLE AND CROSS-BRACING
- 12 METAL CORNICE, MATTE BLACK
- 13 PAINTED STEEL CHANNEL COLUMN, BLACK
- 14 EXISTING PARKING STRUCTURE
- 15 METAL PANELS SALVAGED FROM PARKING STRUCTURE
- 16 STONE OR CAST STONE BASE COURSE, BLACK
- 17 GLASS AT GARAGE LEVELS TO BE TRANSLUCENT
- 18 METAL LOUVERED PANELS, BLACK



- FAA HEIGHT LIMIT (1905) 257'-0"
- ROOF 252'-4"
- FIFTEENTH FLOOR 240'-0"
- FOURTEENTH FLOOR 230'-0"
- THIRTEENTH FLOOR 220'-0"
- TWELFTH FLOOR 210'-0"
- ELEVENTH FLOOR 200'-0"
- TENTH FLOOR 190'-0"
- NINTH FLOOR 180'-0"
- EIGHTH FLOOR 170'-0"
- SEVENTH FLOOR 160'-0"
- SIXTH FLOOR 148'-5"
- FIFTH FLOOR 137'-9"
- FOURTH FLOOR 128'-8"
- THIRD FLOOR 119'-3"
- SECOND FLOOR 109'-7"
- FIRST FLOOR (BS2) 100'-0"

- ### ELEVATION KEY NOTES
- 1 BRICK VENEER
 - 2 PAINTED METAL PANEL, MATTE BLACK
 - 3 PRECAST CONCRETE BAND, BLACK
 - 4 CONCEALED FASTENER FORMED METAL PANEL, MATTE BLACK
 - 5 STEEL CHANNEL, PAINTED MATTE BLACK
 - 6 ALUMINUM OR FIBERGLASS COMPOSITE WINDOW SYSTEM, BLACK
 - 7 ALUMINUM OR STEEL TRELLIS
 - 8 ALUMINUM STOREFRONT SYSTEM, BLACK
 - 9 CAST CONCRETE WITH BOARD FORMED LINER
 - 10 ALUMINUM HANDRAIL, BLACK
 - 11 STEEL TURNBUCKLE AND CROSS-BRACING
 - 12 METAL CORNICE, MATTE BLACK
 - 13 PAINTED STEEL CHANNEL COLUMN, BLACK
 - 14 EXISTING PARKING STRUCTURE
 - 15 METAL PANELS SALVAGED FROM PARKING STRUCTURE
 - 16 STONE OR CAST STONE BASE COURSE, BLACK
 - 17 GLASS AT GARAGE LEVELS TO BE TRANSLUCENT
 - 18 METAL LOUVERED PANELS, BLACK

SOUTHWEST BUILDING ELEVATION
 929 East Washington Avenue Hotel - 2016.36.02.4
 01/10/24





HOMWOOD
SUITES
by Hilton

TEMPO