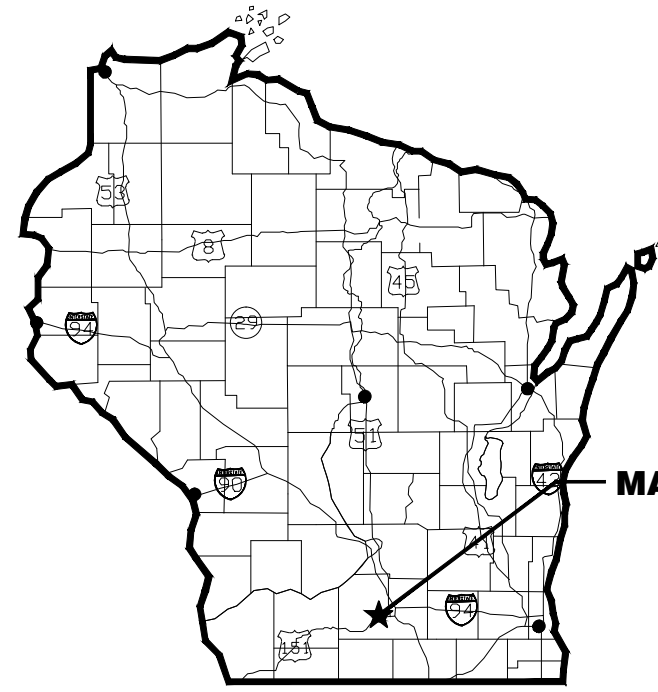


MONONA TERRACE FIRE ALARM SYSTEM UPGRADE

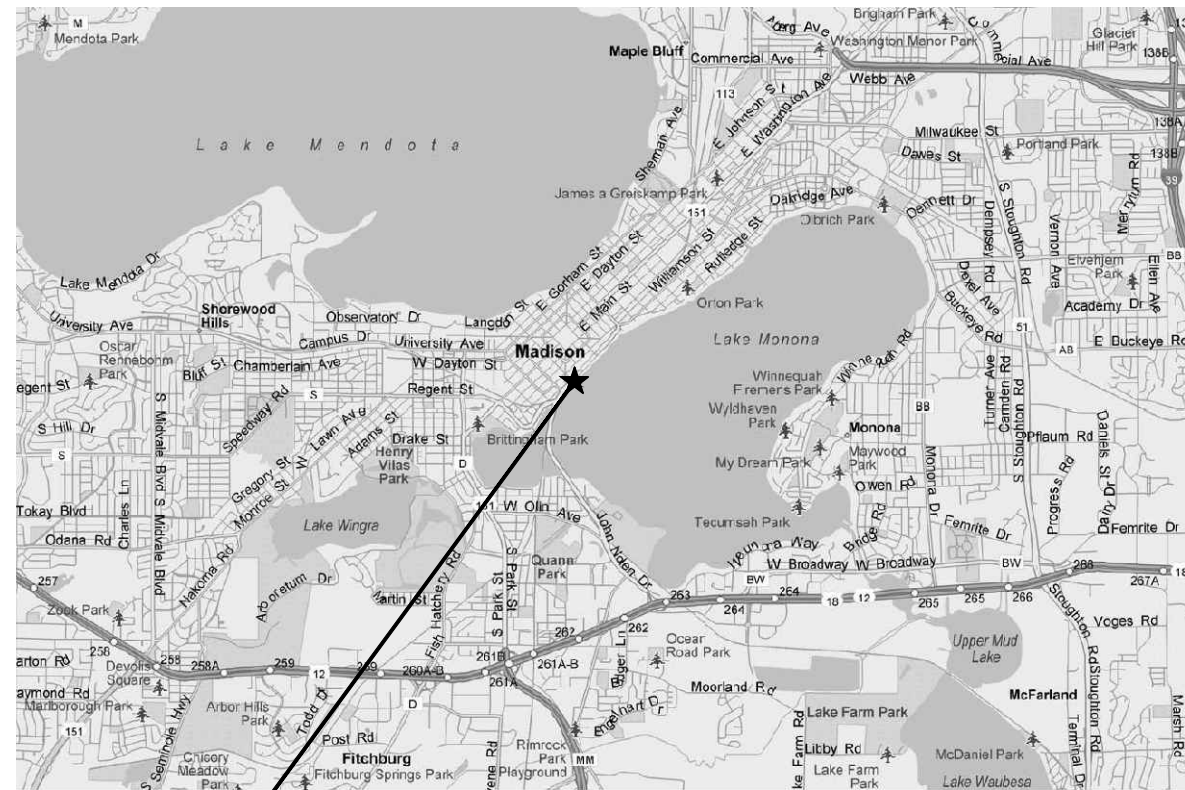
FOR THE CITY OF MADISON MADISON, WISCONSIN



AREA MAP
NO SCALE

MADISON, WISCONSIN

**MONONA TERRACE
1 JOHN NOLEN DRIVE
MADISON, WISCONSIN 53703**



PROJECT LOCATION MAP
NO SCALE

DRAWING LIST

SHEET NO.	DRAWING NO.	TITLE
1	G01	TITLE SHEET, LOCATION MAPS, AND LIST OF DRAWINGS
2	G02	STANDARD SYMBOLS
3	E1.0	LEVEL 29' AND 40' OVERALL PARKING RAMP FLOOR PLAN
4	ED1.1	LEVEL 4.6' DEMOLITION FLOOR PLAN - EAST
5	ED1.2	LEVEL 4.6' DEMOLITION FLOOR PLAN - WEST
6	ED1.3	LEVEL 19' DEMOLITION FLOOR PLAN - EAST
7	ED1.4	LEVEL 19' DEMOLITION FLOOR PLAN - WEST
8	ED1.5	LEVEL 29' DEMOLITION FLOOR PLAN - EAST
9	ED1.6	LEVEL 29' DEMOLITION FLOOR PLAN - WEST
10	ED1.7	LEVEL 40' DEMOLITION FLOOR PLAN - EAST
11	ED1.8	LEVEL 40' DEMOLITION FLOOR PLAN - WEST
12	ED1.9	LEVEL 62.66' DEMOLITION FLOOR PLAN - EAST
13	ED1.10	LEVEL 62.66' DEMOLITION FLOOR PLAN - WEST
14	ED1.11	LEVEL 65' DEMOLITION FLOOR PLAN - EAST
15	ED1.12	LEVEL 65' DEMOLITION FLOOR PLAN - WEST
16	ED1.13	DEMOLITION ENLARGED PLANS - 1
17	ED1.14	DEMOLITION ENLARGED PLANS - 2
18	E1.1	LEVEL 4.6' FLOOR PLAN - EAST
19	E1.2	LEVEL 4.6' FLOOR PLAN - WEST
20	E1.3	LEVEL 19' FLOOR PLAN - EAST
21	E1.4	LEVEL 19' FLOOR PLAN - WEST
22	E1.5	LEVEL 29' FLOOR PLAN - EAST
23	E1.6	LEVEL 29' FLOOR PLAN - WEST
24	E1.7	LEVEL 40' FLOOR PLAN - EAST
25	E1.8	LEVEL 40' FLOOR PLAN - WEST
26	E1.9	LEVEL 62.66' FLOOR PLAN - EAST
27	E1.10	LEVEL 62.66' FLOOR PLAN - WEST
28	E1.11	LEVEL 65' FLOOR PLAN - EAST
29	E1.12	LEVEL 65' FLOOR PLAN - WEST
30	E1.13	ENLARGED PLANS - 1
31	E1.14	ENLARGED PLANS - 2

910 WEST WINGRA DRIVE
MADISON, WI 53715
608-251-4843
608-251-8655 fax
www.strand.com

CONTRACT _____

SUBMITTAL, 00/00/00



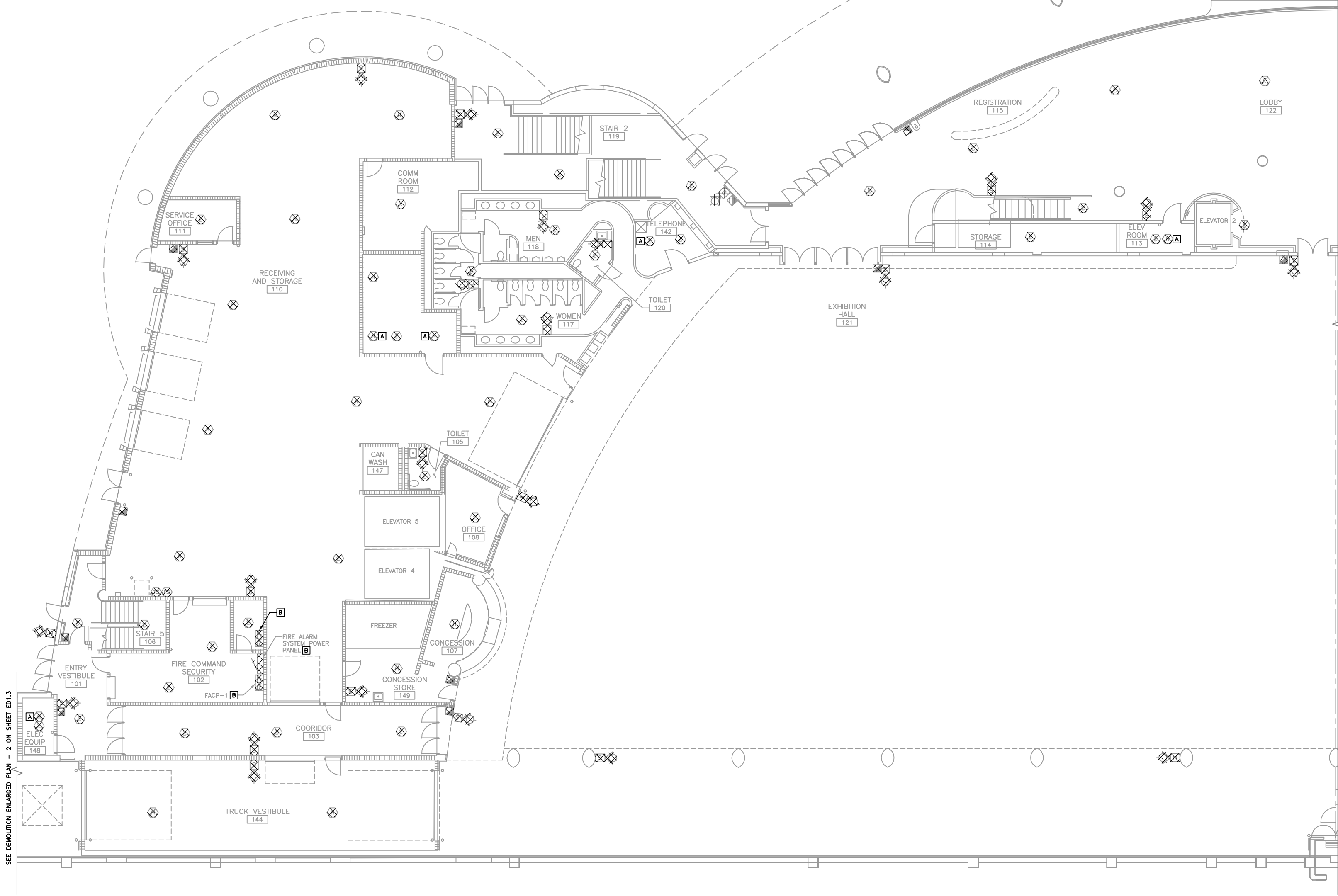
SHEET
1
G0.1

GENERAL NOTES:

1. NOT ALL EXISTING EQUIPMENT SHOWN. ALL LOCATIONS ARE APPROXIMATE. CONTRACTOR SHALL FIELD VERIFY THE LOCATION OF ALL EXISTING EQUIPMENT.
2. ALL HOLES AND OPENINGS NOT BEING REUSED FROM EQUIPMENT, ETC., WHICH ARE BEING REMOVED FROM PLASTER FINISHES SHALL BE CAPPED. ALL HOLES AND OPENINGS NOT BEING REUSED FROM EQUIPMENT, ETC., WHICH ARE BEING REMOVED FROM GYPSUM BOARD FINISHES SHALL BE PATCHED AND PAINTED TO MATCH EXISTING SURFACES.
3. SEAL AND CAP ALL EXISTING CONDUIT AND PENETRATIONS THAT ARE NOT BEING REUSED. ALL CONDUIT PENETRATIONS BETWEEN INTERIOR SPACES SHALL BE CONSIDERED FIRE RATED PENETRATIONS AND SHALL BE SEALED TO MAINTAIN THE EXISTING FIRE RATINGS.
4. REMOVE ALL EXISTING ELECTRICAL EQUIPMENT AND MATERIALS ASSOCIATED WITH THE ITEMS BEING REMOVED, AS WELL AS ELECTRICAL DEVICES, MATERIALS, AND EQUIPMENT NOT BEING REUSED.
5. DISCONNECT ALL FIRE ALARM DEVICE CONDUIT AND WIRING AND PREPARE FOR REUSE AND PROVIDE NEW DEVICE WITHIN EXISTING LOCATION AS SHOWN ON ELECTRICAL PLANS, UNLESS NOTED OTHERWISE. PROVIDE NEW CONDUIT AND WIRING AS REQUIRED TO REFEED NEW DEVICE.

DEMOLITION NOTES:

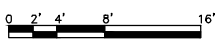
- [A] REMOVE CEILING MOUNTED DEVICE AND DISCONNECT ALL ASSOCIATED CONDUIT AND WIRING AND PREPARE FOR REUSE. PROVIDE BLANK FACEPLATE.
- [B] REMOVE FIRE ALARM CONTROL PANELS, POWER SUPPLIES, AND ALL ASSOCIATED CONTROL PANEL EQUIPMENT. DISCONNECT ALL CONDUIT AND WIRING ASSOCIATED WITH REMOTE DEVICES AND PREPARE FOR REUSE. REMOVE THE EXISTING FIRE ALARM NETWORK WIRING FROM FACP-1 TO FACP-2, FACP-3, AND FACP-4, WHICH CONSISTS OF 10~#18 TWISTED SHIELDED PAIRS.



SEE DEMOLITION ENLARGED PLAN - 2 ON SHEET ED1.3

SEE ED1.2 FOR CONTINUATION

LEVEL 4.6' DEMOLITION FLOOR PLAN - EAST



NO.	DATE	REVISIONS

LEVEL 4.6' DEMOLITION FLOOR PLAN - EAST
 MONONA TERRACE FIRE ALARM SYSTEM UPGRADE
 CITY OF MADISON
 MADISON, WISCONSIN

JOB NO.
1.020-095
 PROJECT MGR.
MATTHEW CARERROS



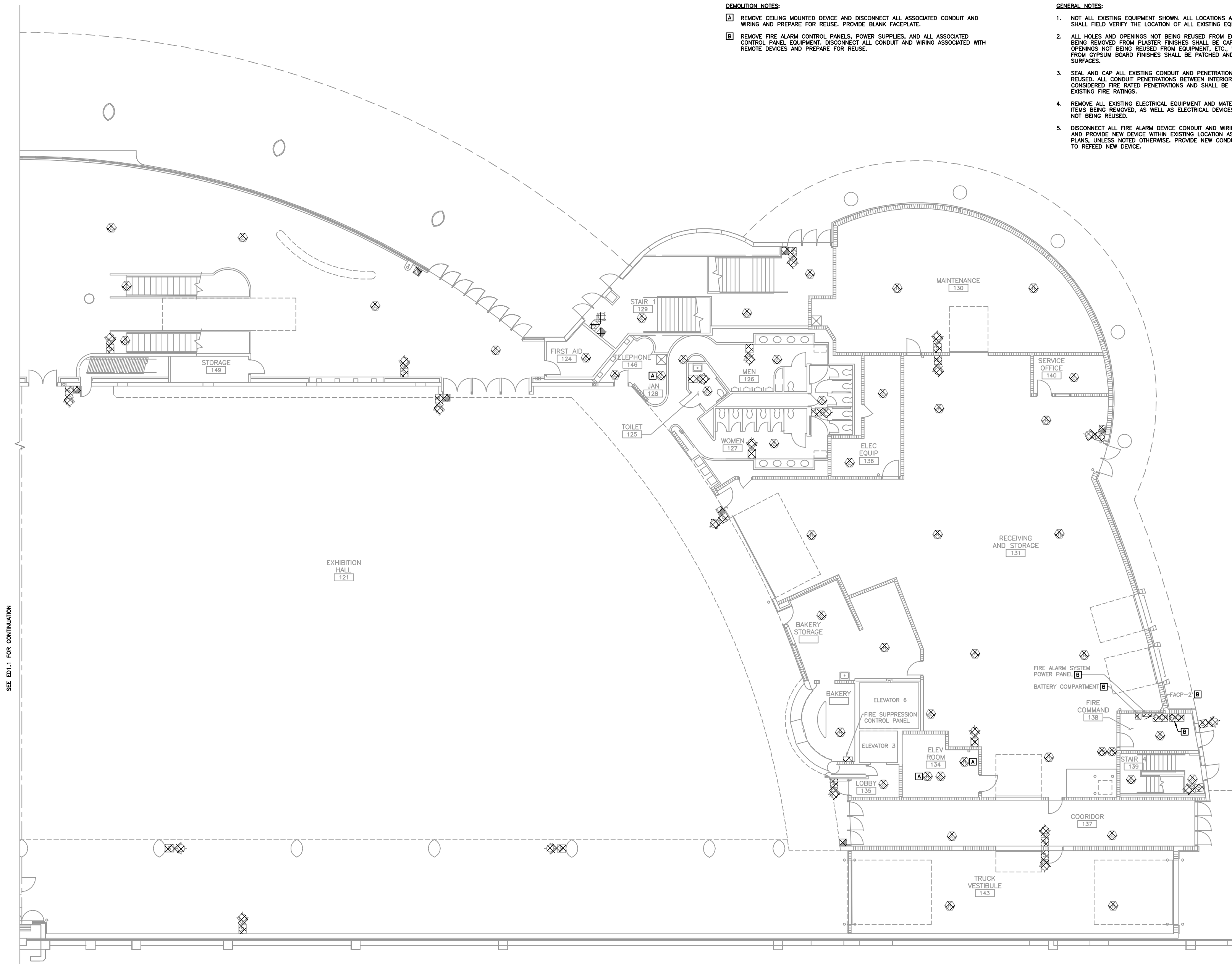
SHEET
ED1.1

DEMOLITION NOTES:

- A** REMOVE CEILING MOUNTED DEVICE AND DISCONNECT ALL ASSOCIATED CONDUIT AND WIRING AND PREPARE FOR REUSE. PROVIDE BLANK FACEPLATE.
- B** REMOVE FIRE ALARM CONTROL PANELS, POWER SUPPLIES, AND ALL ASSOCIATED CONTROL PANEL EQUIPMENT. DISCONNECT ALL CONDUIT AND WIRING ASSOCIATED WITH REMOTE DEVICES AND PREPARE FOR REUSE.

GENERAL NOTES:

1. NOT ALL EXISTING EQUIPMENT SHOWN. ALL LOCATIONS ARE APPROXIMATE. CONTRACTOR SHALL FIELD VERIFY THE LOCATION OF ALL EXISTING EQUIPMENT.
2. ALL HOLES AND OPENINGS NOT BEING REUSED FROM EQUIPMENT, ETC., WHICH ARE BEING REMOVED FROM PLASTER FINISHES SHALL BE CAPPED. ALL HOLES AND OPENINGS NOT BEING REUSED FROM EQUIPMENT, ETC., WHICH ARE BEING REMOVED FROM GYPSUM BOARD FINISHES SHALL BE PATCHED AND PAINTED TO MATCH EXISTING SURFACES.
3. SEAL AND CAP ALL EXISTING CONDUIT AND PENETRATIONS THAT ARE NOT BEING REUSED. ALL CONDUIT PENETRATIONS BETWEEN INTERIOR SPACES SHALL BE CONSIDERED FIRE RATED PENETRATIONS AND SHALL BE SEALED TO MAINTAIN THE EXISTING FIRE RATINGS.
4. REMOVE ALL EXISTING ELECTRICAL EQUIPMENT AND MATERIALS ASSOCIATED WITH THE ITEMS BEING REMOVED, AS WELL AS ELECTRICAL DEVICES, MATERIALS, AND EQUIPMENT NOT BEING REUSED.
5. DISCONNECT ALL FIRE ALARM DEVICE CONDUIT AND WIRING AND PREPARE FOR REUSE AND PROVIDE NEW DEVICE WITHIN EXISTING LOCATION AS SHOWN ON ELECTRICAL PLANS, UNLESS NOTED OTHERWISE. PROVIDE NEW CONDUIT AND WIRING AS REQUIRED TO REFEED NEW DEVICE.



SEE ED1.1 FOR CONTINUATION

SEE DEMOLITION ENLARGED PLAN - 7 ON SHEET ED1.13

LEVEL 4.6' FLOOR PLAN - WEST
 0' 2' 4' 8' 16'

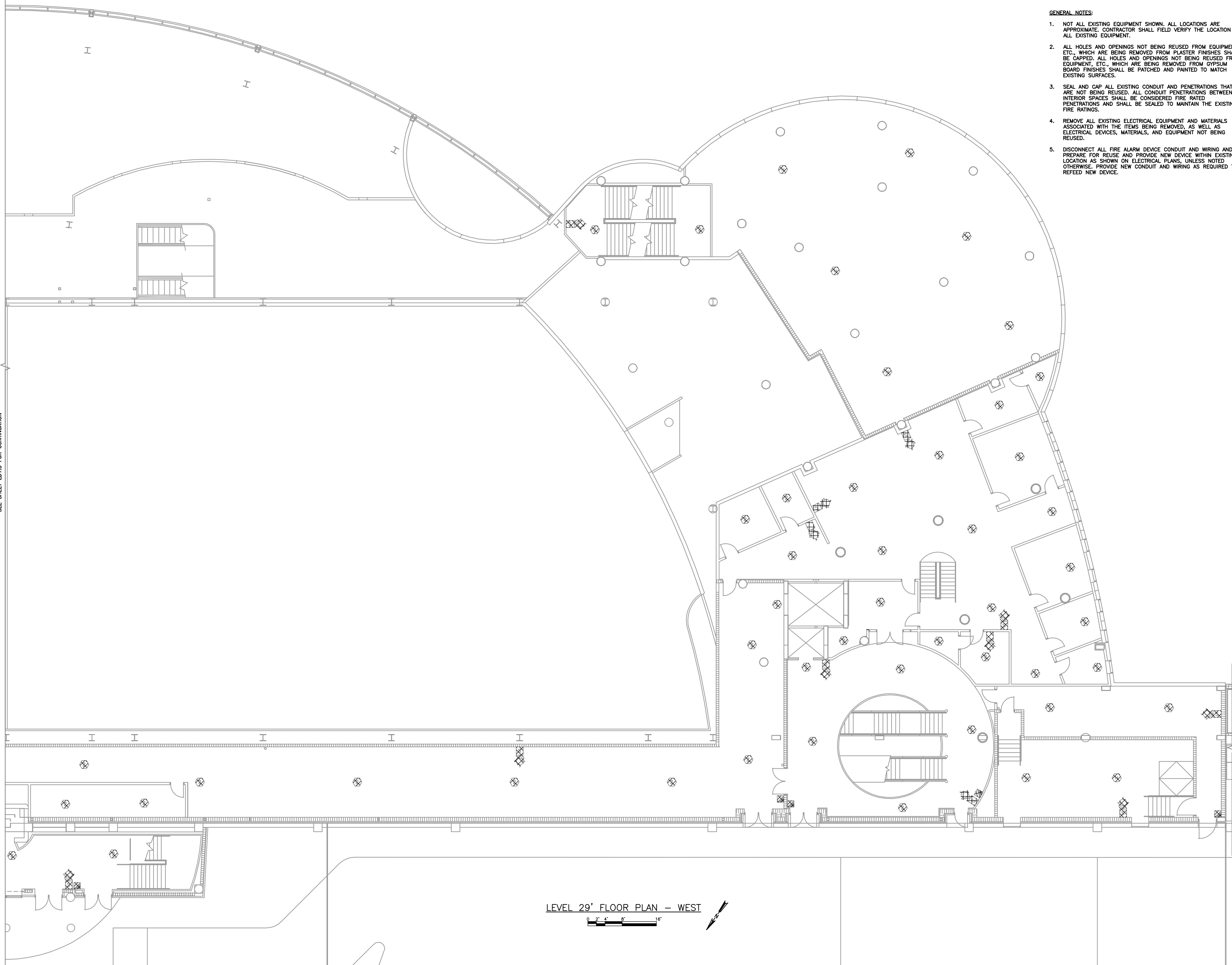
NO.	#	DATE	BY	CHK

NO.	#	DATE	BY	CHK

LEVEL 4.6' DEMOLITION FLOOR PLAN - WEST
 MONONA TERRACE FIRE ALARM SYSTEM UPGRADE
 CITY OF MADISON
 MADISON, WISCONSIN

JOB NO.
 1.020-095
PROJECT MGR.
 MATTHEW CARERROS

SA STRAND ASSOCIATES
 SHEET
 ED1.2

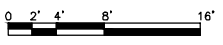


- GENERAL NOTES:**
1. NOT ALL EXISTING EQUIPMENT SHOWN. ALL LOCATIONS ARE APPROXIMATE. CONTRACTOR SHALL FIELD VERIFY THE LOCATION OF ALL EXISTING EQUIPMENT.
 2. ALL HOLES AND OPENINGS NOT BEING REUSED FROM EQUIPMENT, ETC., WHICH ARE BEING REMOVED FROM PLASTER FINISHES SHALL BE CAPPED. ALL HOLES AND OPENINGS NOT BEING REUSED FROM EQUIPMENT, ETC., WHICH ARE BEING REMOVED FROM GYPSUM BOARD FINISHES SHALL BE PATCHED AND PAINTED TO MATCH EXISTING SURFACES.
 3. SEAL AND CAP ALL EXISTING CONDUIT AND PENETRATIONS THAT ARE NOT BEING REUSED. ALL CONDUIT PENETRATIONS BETWEEN INTERIOR SPACES SHALL BE CONSIDERED FIRE RATED PENETRATIONS AND SHALL BE SEALED TO MAINTAIN THE EXISTING FIRE RATINGS.
 4. REMOVE ALL EXISTING ELECTRICAL EQUIPMENT AND MATERIALS ASSOCIATED WITH THE ITEMS BEING REMOVED, AS WELL AS ELECTRICAL DEVICES, MATERIALS, AND EQUIPMENT NOT BEING REUSED.
 5. DISCONNECT ALL FIRE ALARM DEVICE CONDUIT AND WIRING AND PREPARE FOR REUSE AND PROVIDE NEW DEVICE WITHIN EXISTING LOCATION AS SHOWN ON ELECTRICAL PLANS, UNLESS NOTED OTHERWISE. PROVIDE NEW CONDUIT AND WIRING AS REQUIRED TO REFEED NEW DEVICE.

SEE SHEET ED1.5 FOR CONTINUATION

SEE DEMOLITION ENLARGED PLAN - 7 ON SHEET ED1.13

LEVEL 29' FLOOR PLAN -- WEST



DATE	
NO.	BY/DATE


LEVEL 29' DEMOLITION FLOOR PLAN - WEST

MONONA TERRACE FIRE ALARM SYSTEM UPGRADE

CITY OF MADISON
MADISON, WISCONSIN

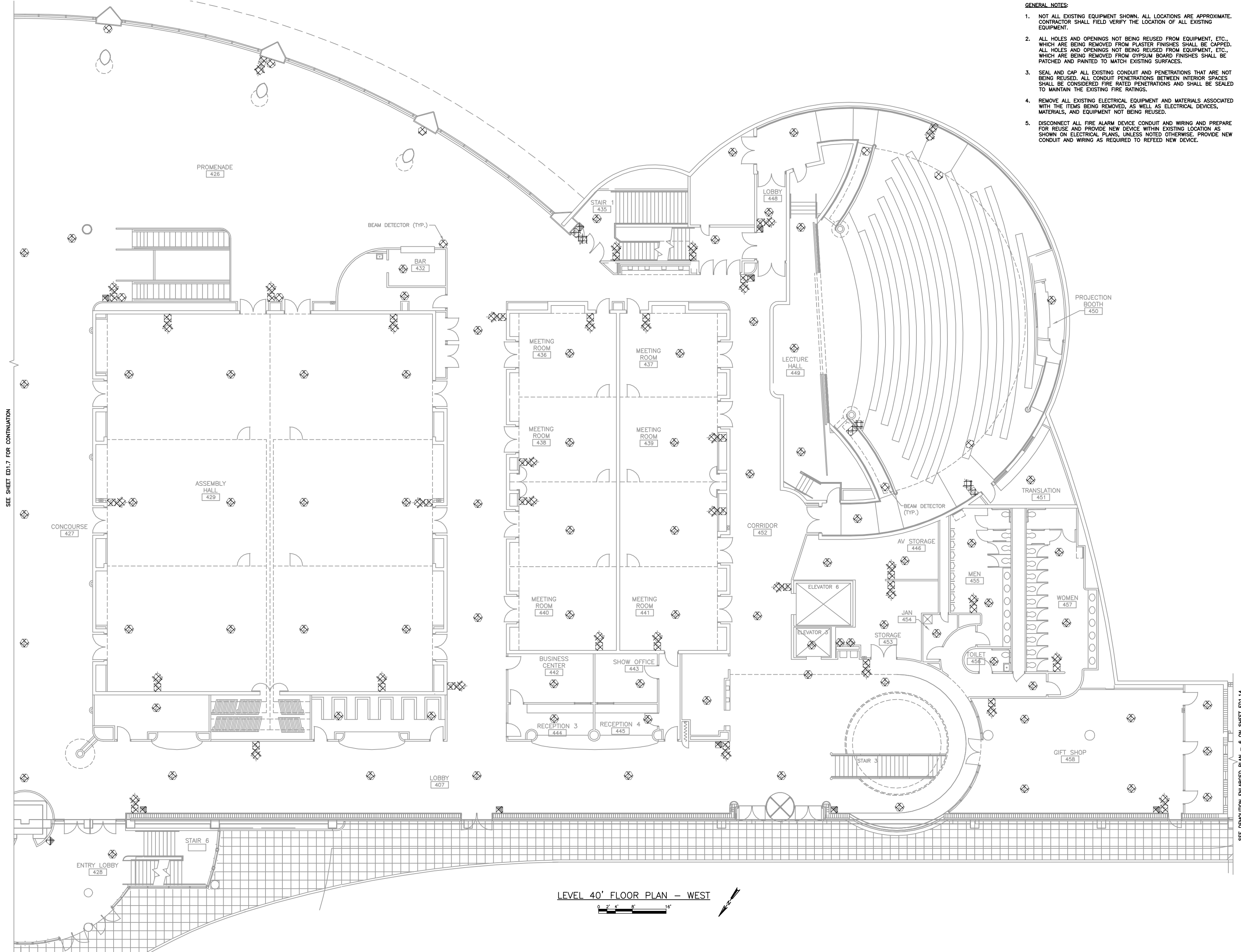
JOB NO.
1.020-095

PROJECT MGR.
MATTHEW CARERROS



SHEET
ED1.6

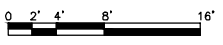
- GENERAL NOTES:**
1. NOT ALL EXISTING EQUIPMENT SHOWN. ALL LOCATIONS ARE APPROXIMATE. CONTRACTOR SHALL FIELD VERIFY THE LOCATION OF ALL EXISTING EQUIPMENT.
 2. ALL HOLES AND OPENINGS NOT BEING REUSED FROM EQUIPMENT, ETC., WHICH ARE BEING REMOVED FROM PLASTER FINISHES SHALL BE CAPPED. ALL HOLES AND OPENINGS NOT BEING REUSED FROM EQUIPMENT, ETC., WHICH ARE BEING REMOVED FROM GYPSUM BOARD FINISHES SHALL BE PATCHED AND PAINTED TO MATCH EXISTING SURFACES.
 3. SEAL AND CAP ALL EXISTING CONDUIT AND PENETRATIONS THAT ARE NOT BEING REUSED. ALL CONDUIT PENETRATIONS BETWEEN INTERIOR SPACES SHALL BE CONSIDERED FIRE RATED PENETRATIONS AND SHALL BE SEALED TO MAINTAIN THE EXISTING FIRE RATINGS.
 4. REMOVE ALL EXISTING ELECTRICAL EQUIPMENT AND MATERIALS ASSOCIATED WITH THE ITEMS BEING REMOVED, AS WELL AS ELECTRICAL DEVICES, MATERIALS, AND EQUIPMENT NOT BEING REUSED.
 5. DISCONNECT ALL FIRE ALARM DEVICE CONDUIT AND WIRING AND PREPARE FOR REUSE AND PROVIDE NEW DEVICE WITHIN EXISTING LOCATION AS SHOWN ON ELECTRICAL PLANS, UNLESS NOTED OTHERWISE. PROVIDE NEW CONDUIT AND WIRING AS REQUIRED TO REFEED NEW DEVICE.



SEE SHEET ED1.7 FOR CONTINUATION

SEE DEMOLITION ENLARGED PLAN - 6 ON SHEET ED1.14

LEVEL 40' FLOOR PLAN - WEST



DATE	BY	NO.	#

NO.	#

LEVEL 40' DEMOLITION FLOOR PLAN - WEST
 MONONA TERRACE FIRE ALARM SYSTEM UPGRADE
 CITY OF MADISON
 MADISON, WISCONSIN

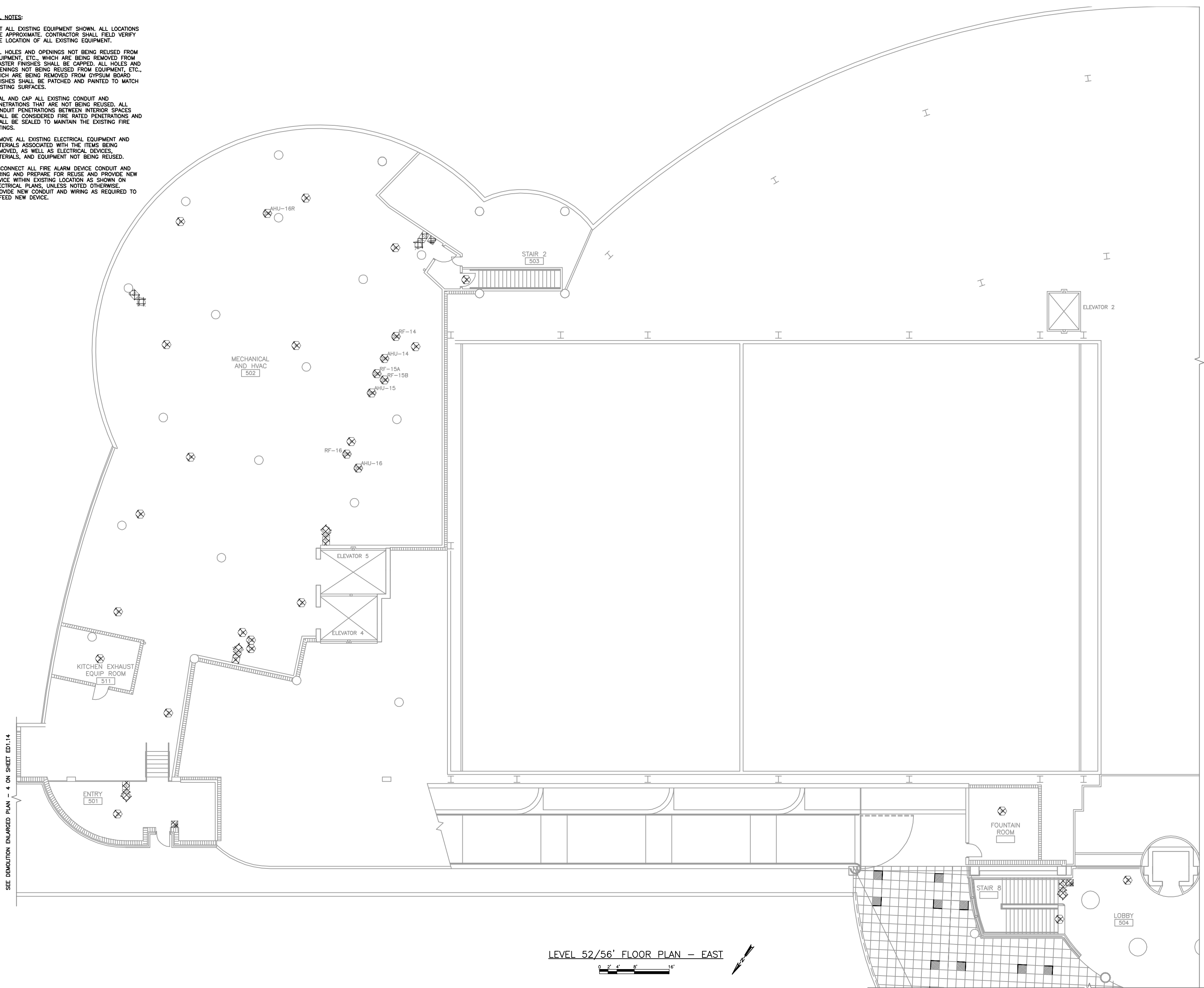
JOB NO.
1.020-095
 PROJECT MGR.
MATTHEW CARERROS



SHEET
ED1.8

GENERAL NOTES:

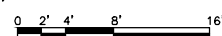
1. NOT ALL EXISTING EQUIPMENT SHOWN. ALL LOCATIONS ARE APPROXIMATE. CONTRACTOR SHALL FIELD VERIFY THE LOCATION OF ALL EXISTING EQUIPMENT.
2. ALL HOLES AND OPENINGS NOT BEING REUSED FROM EQUIPMENT, ETC., WHICH ARE BEING REMOVED FROM PLASTER FINISHES SHALL BE CAPPED. ALL HOLES AND OPENINGS NOT BEING REUSED FROM EQUIPMENT, ETC., WHICH ARE BEING REMOVED FROM GYPSUM BOARD FINISHES SHALL BE PATCHED AND PAINTED TO MATCH EXISTING SURFACES.
3. SEAL AND CAP ALL EXISTING CONDUIT AND PENETRATIONS THAT ARE NOT BEING REUSED. ALL CONDUIT PENETRATIONS BETWEEN INTERIOR SPACES SHALL BE CONSIDERED FIRE RATED PENETRATIONS AND SHALL BE SEALED TO MAINTAIN THE EXISTING FIRE RATINGS.
4. REMOVE ALL EXISTING ELECTRICAL EQUIPMENT AND MATERIALS ASSOCIATED WITH THE ITEMS BEING REMOVED, AS WELL AS ELECTRICAL DEVICES, MATERIALS, AND EQUIPMENT NOT BEING REUSED.
5. DISCONNECT ALL FIRE ALARM DEVICE CONDUIT AND WIRING AND PREPARE FOR REUSE AND PROVIDE NEW DEVICE WITHIN EXISTING LOCATION AS SHOWN ON ELECTRICAL PLANS, UNLESS NOTED OTHERWISE. PROVIDE NEW CONDUIT AND WIRING AS REQUIRED TO REFEED NEW DEVICE.



SEE SHEET ED1.10 FOR CONTINUATION

SEE DEMOLITION ENLARGED PLAN - 4 ON SHEET ED1.14

LEVEL 52/56' FLOOR PLAN - EAST



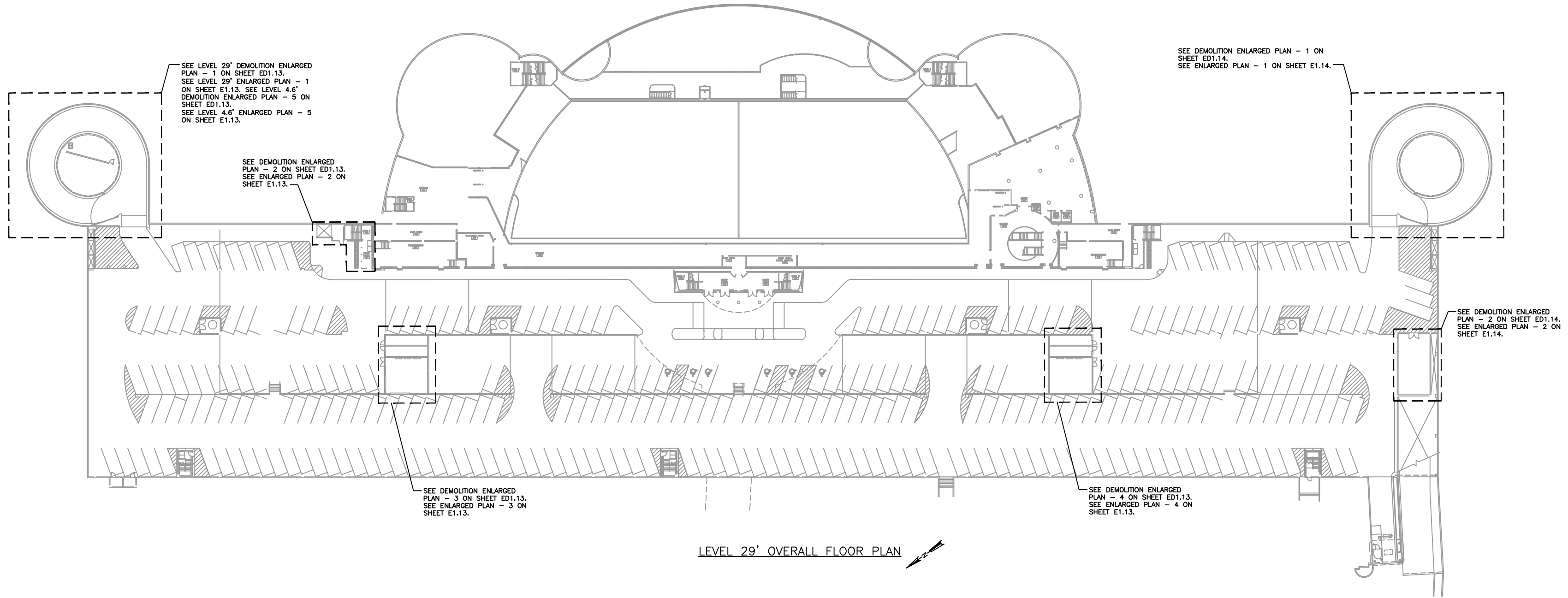
NO.	#	REVISIONS	DATE

LEVEL 52/56' DEMOLITION FLOOR PLAN - EAST
 MONONA TERRACE FIRE ALARM SYSTEM UPGRADE
 CITY OF MADISON
 MADISON, WISCONSIN

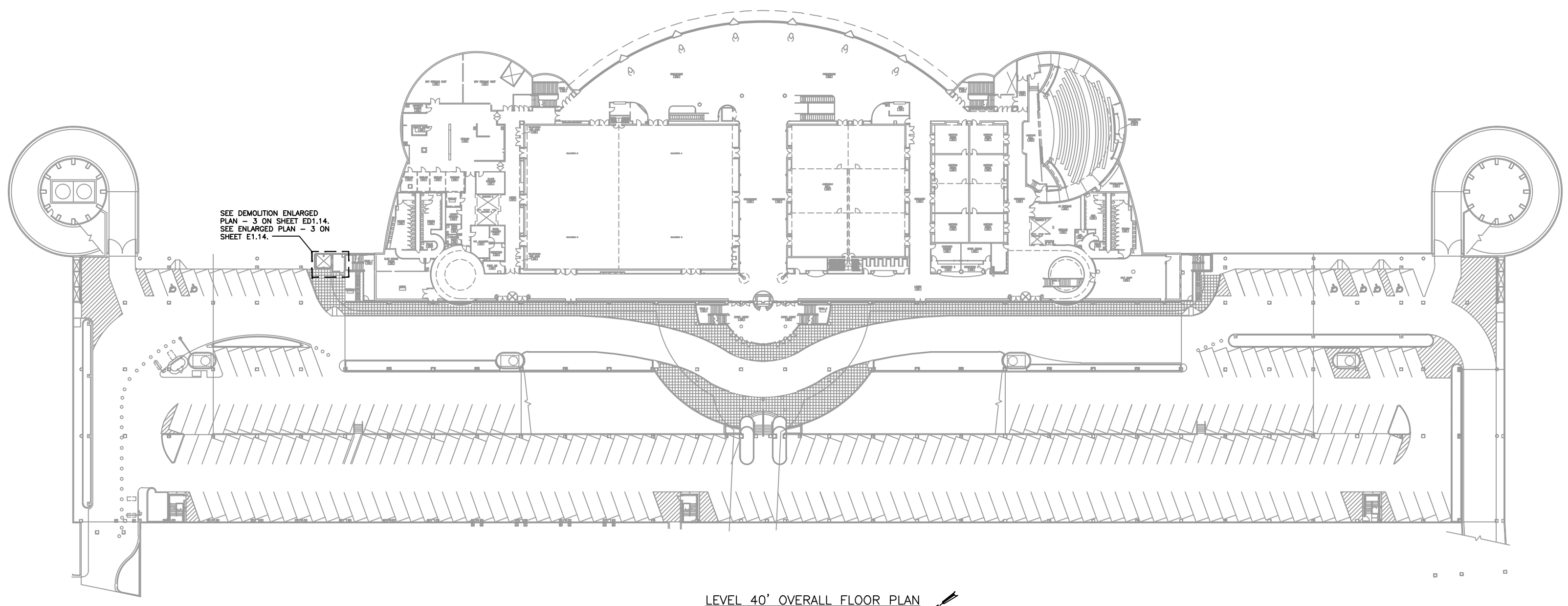
JOB NO.
1.020-095
 PROJECT MGR.
MATTHEW CARERROS



SHEET
ED1.9



LEVEL 29' OVERALL FLOOR PLAN



LEVEL 40' OVERALL FLOOR PLAN

DATE	W/P/N

NO.	#

LEVEL 29' AND 40' OVERALL PARKING RAMP FLOOR PLAN
 MONONA TERRACE FIRE ALARM SYSTEM UPGRADE
 CITY OF MADISON
 MADISON, WISCONSIN

JOB NO.
1.020-095
 PROJECT MGR.
MATTHEW CARERROS

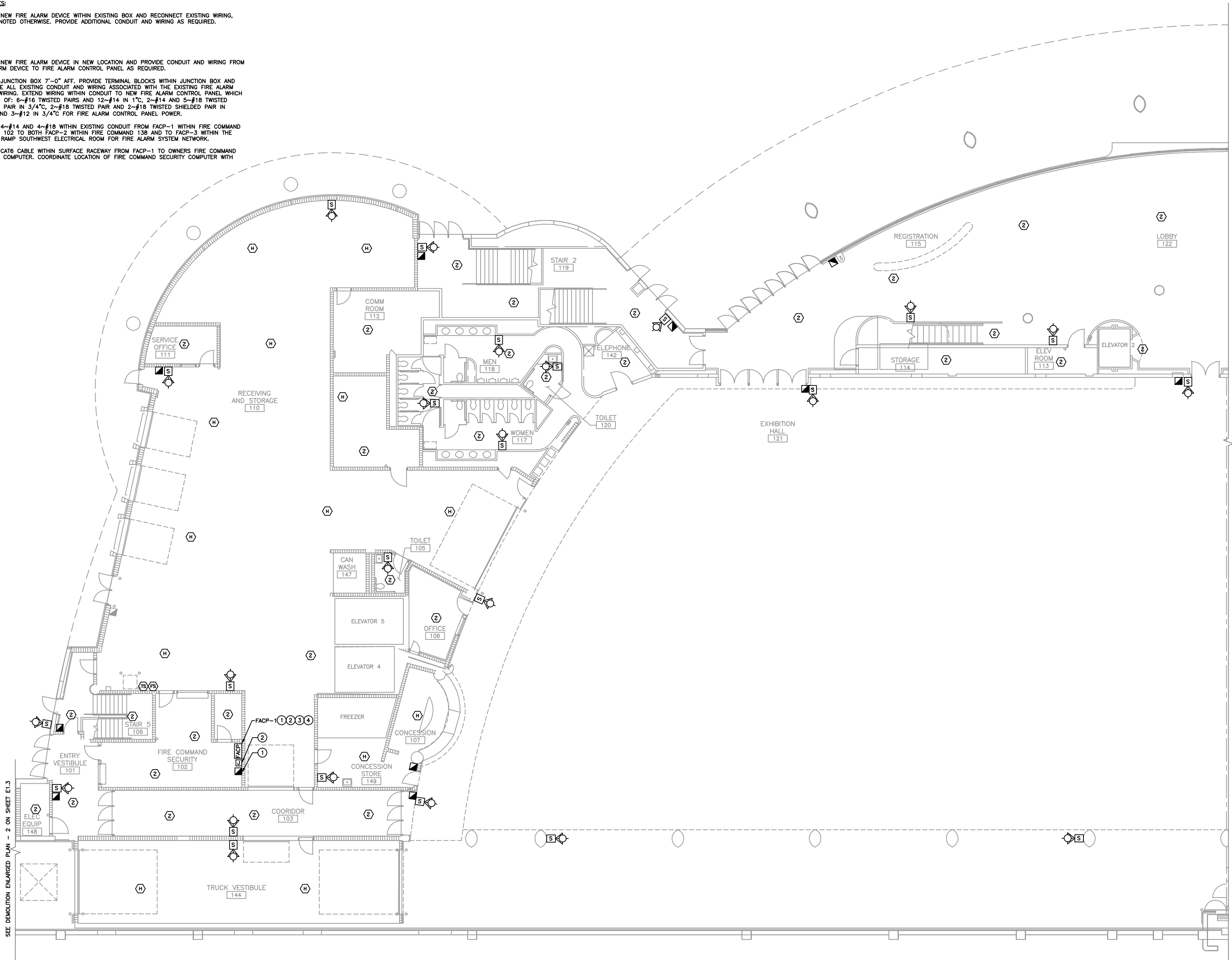
 SHEET
E1.0

GENERAL NOTES:

1. PROVIDE NEW FIRE ALARM DEVICE WITHIN EXISTING BOX AND RECONNECT EXISTING WIRING, UNLESS NOTED OTHERWISE. PROVIDE ADDITIONAL CONDUIT AND WIRING AS REQUIRED.

KEY NOTES:

1. PROVIDE NEW FIRE ALARM DEVICE IN NEW LOCATION AND PROVIDE CONDUIT AND WIRING FROM FIRE ALARM DEVICE TO FIRE ALARM CONTROL PANEL AS REQUIRED.
2. PROVIDE JUNCTION BOX 7'-0" AFF. PROVIDE TERMINAL BLOCKS WITHIN JUNCTION BOX AND TERMINATE ALL EXISTING CONDUIT AND WIRING ASSOCIATED WITH THE EXISTING FIRE ALARM SYSTEM WIRING. EXTEND WIRING WITHIN CONDUIT TO NEW FIRE ALARM CONTROL PANEL WHICH CONSISTS OF: 6~#16 TWISTED PAIRS AND 12~#14 IN 1" C, 2~#14 AND 5~#18 TWISTED SHIELDED PAIR IN 3/4" C, 2~#18 TWISTED PAIR AND 2~#18 TWISTED SHIELDED PAIR IN 3/4" C, AND 3~#12 IN 3/4" C FOR FIRE ALARM CONTROL PANEL POWER.
3. PROVIDE 4~#14 AND 4~#18 WITHIN EXISTING CONDUIT FROM FACP-1 WITHIN FIRE COMMAND SECURITY 102 TO BOTH FACP-2 WITHIN FIRE COMMAND 138 AND TO FACP-3 WITHIN THE PARKING RAMP SOUTHWEST ELECTRICAL ROOM FOR FIRE ALARM SYSTEM NETWORK.
4. PROVIDE CAT6 CABLE WITHIN SURFACE RACEWAY FROM FACP-1 TO OWNERS FIRE COMMAND SECURITY COMPUTER. COORDINATE LOCATION OF FIRE COMMAND SECURITY COMPUTER WITH OWNER.



SEE E1.2 FOR CONTINUATION

DATE	NO.	REVISIONS

NO.	#

LEVEL 4.6' FLOOR PLAN - EAST
 MONONA TERRACE FIRE ALARM SYSTEM UPGRADE
 CITY OF MADISON
 MADISON, WISCONSIN

JOB NO.
1.020-095
 PROJECT MGR.
MATTHEW CARERROS

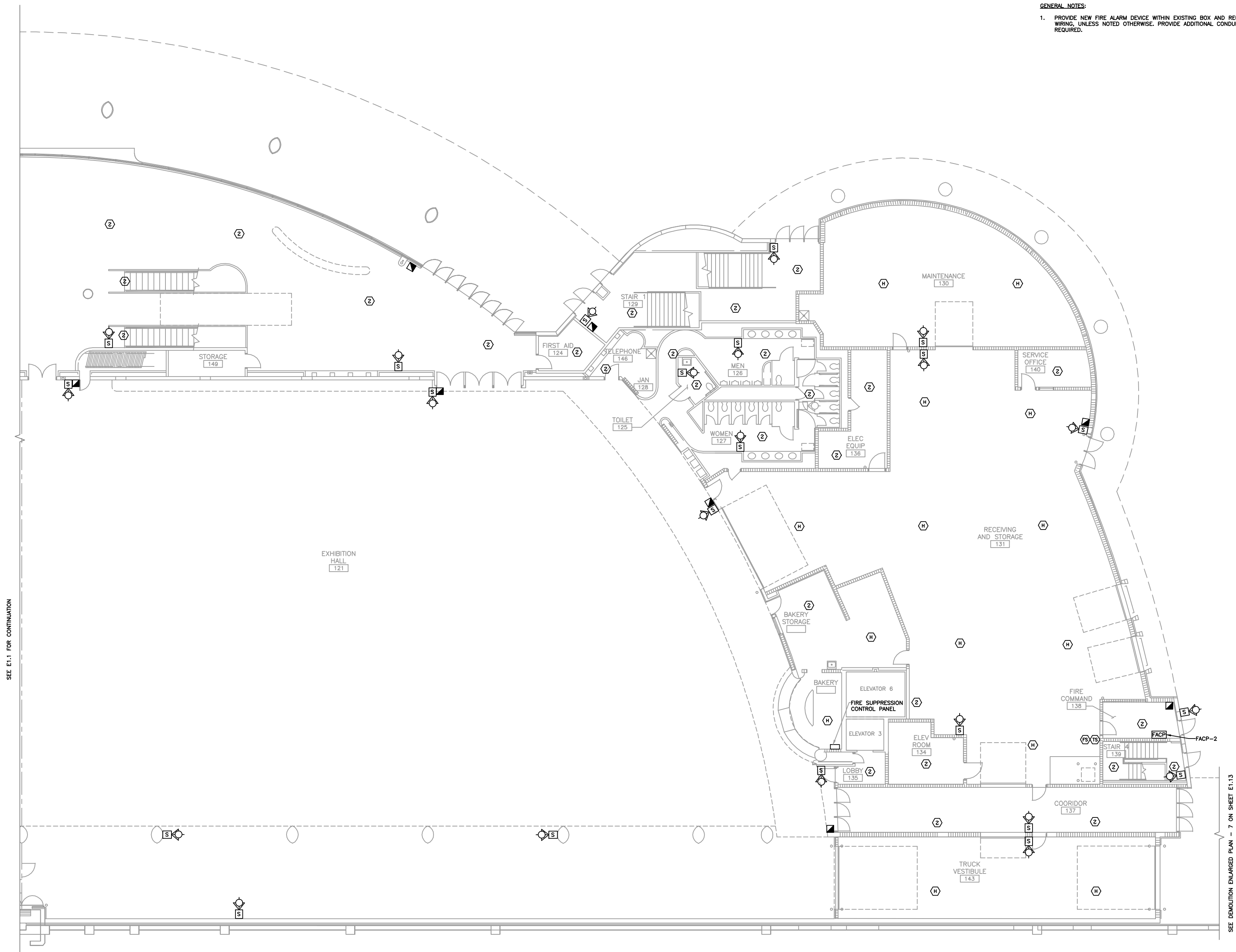


SHEET
E1.1

LEVEL 4.6' FLOOR PLAN - EAST
 0 2' 4' 8' 16'

SEE DEMOLITION ENLARGED PLAN - 2 ON SHEET E1.3

GENERAL NOTES:
 1. PROVIDE NEW FIRE ALARM DEVICE WITHIN EXISTING BOX AND RECONNECT EXISTING WIRING, UNLESS NOTED OTHERWISE. PROVIDE ADDITIONAL CONDUIT AND WIRING AS REQUIRED.



SEE E1.1 FOR CONTINUATION

SEE DEMOTION ENLARGED PLAN - 7 ON SHEET E1.13

LEVEL 4.6' FLOOR PLAN - WEST
 0" 2" 4" 8" 16"

NO.	#	DATE	REVISIONS

LEVEL 4.6' FLOOR PLAN - WEST
 MONONA TERRACE FIRE ALARM SYSTEM UPGRADE
 CITY OF MADISON
 MADISON, WISCONSIN

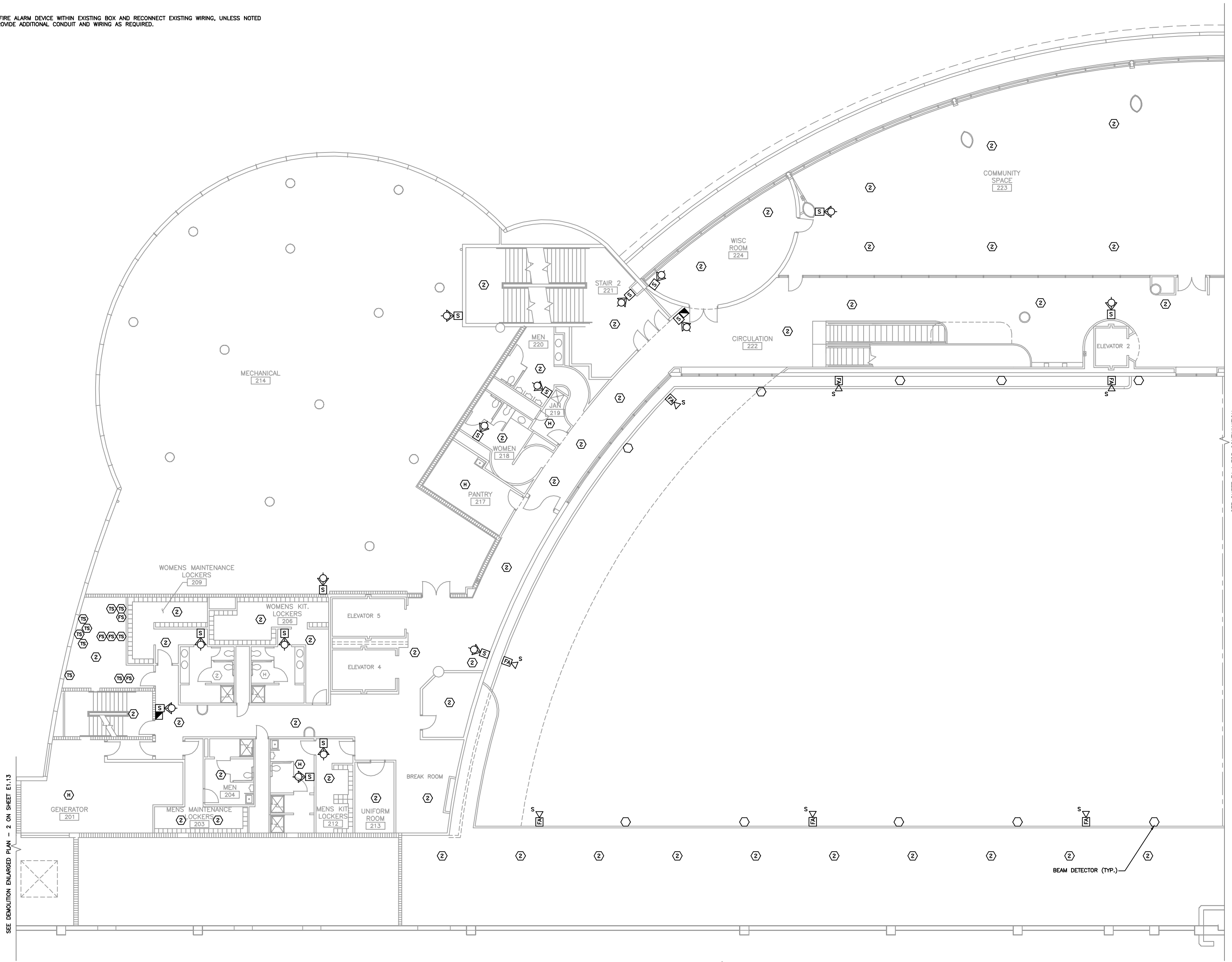
JOB NO.
1.020-095
 PROJECT MGR.
MATTHEW CARERROS



SHEET
E1.2

GENERAL NOTES:

1. PROVIDE NEW FIRE ALARM DEVICE WITHIN EXISTING BOX AND RECONNECT EXISTING WIRING, UNLESS NOTED OTHERWISE. PROVIDE ADDITIONAL CONDUIT AND WIRING AS REQUIRED.



SEE DEMOLITION ENLARGED PLAN - 2 ON SHEET E1.13

SEE SHEET E1.4 FOR CONTINUATION

LEVEL 19' FLOOR PLAN - EAST

DATE	BY	NO.	#

REVISIONS

NO. #

LEVEL 19' FLOOR PLAN - EAST

MONONA TERRACE FIRE ALARM SYSTEM UPGRADE

CITY OF MADISON

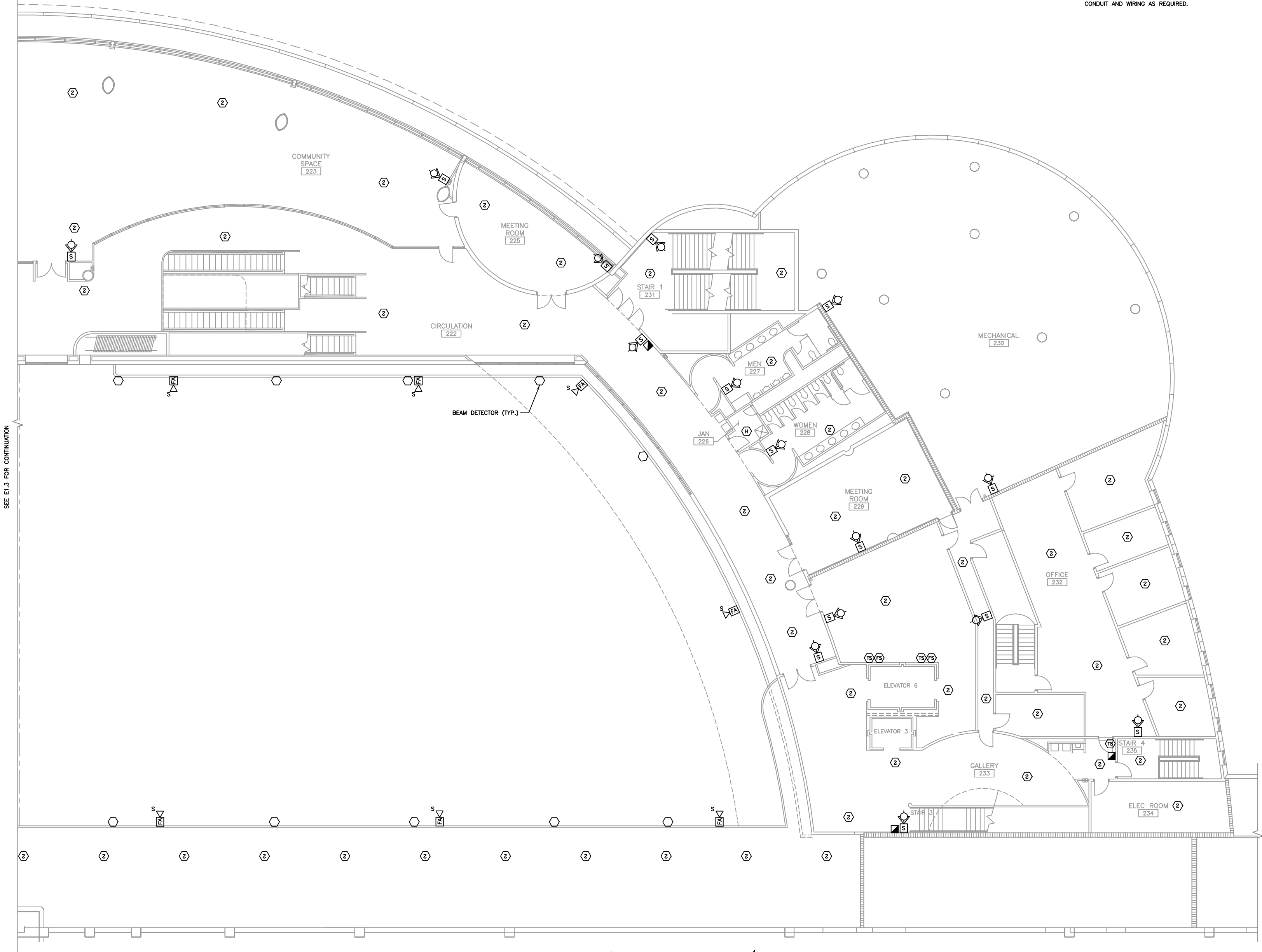
MADISON, WISCONSIN

JOB NO.
1.020-095

PROJECT MGR.
MATTHEW CARERROS

SHEET
E1.3

- GENERAL NOTES:**
1. PROVIDE NEW FIRE ALARM DEVICE WITHIN EXISTING BOX AND RECONNECT EXISTING WIRING, UNLESS NOTED OTHERWISE. PROVIDE ADDITIONAL CONDUIT AND WIRING AS REQUIRED.



SEE E1.3 FOR CONTINUATION

SEE DEMOLITION ENLARGED PLAN - 7 ON SHEET E1.13

LEVEL 19' FLOOR PLAN - WEST
 0 2' 4' 8' 16'

DATE	BY	NO.	REVISIONS

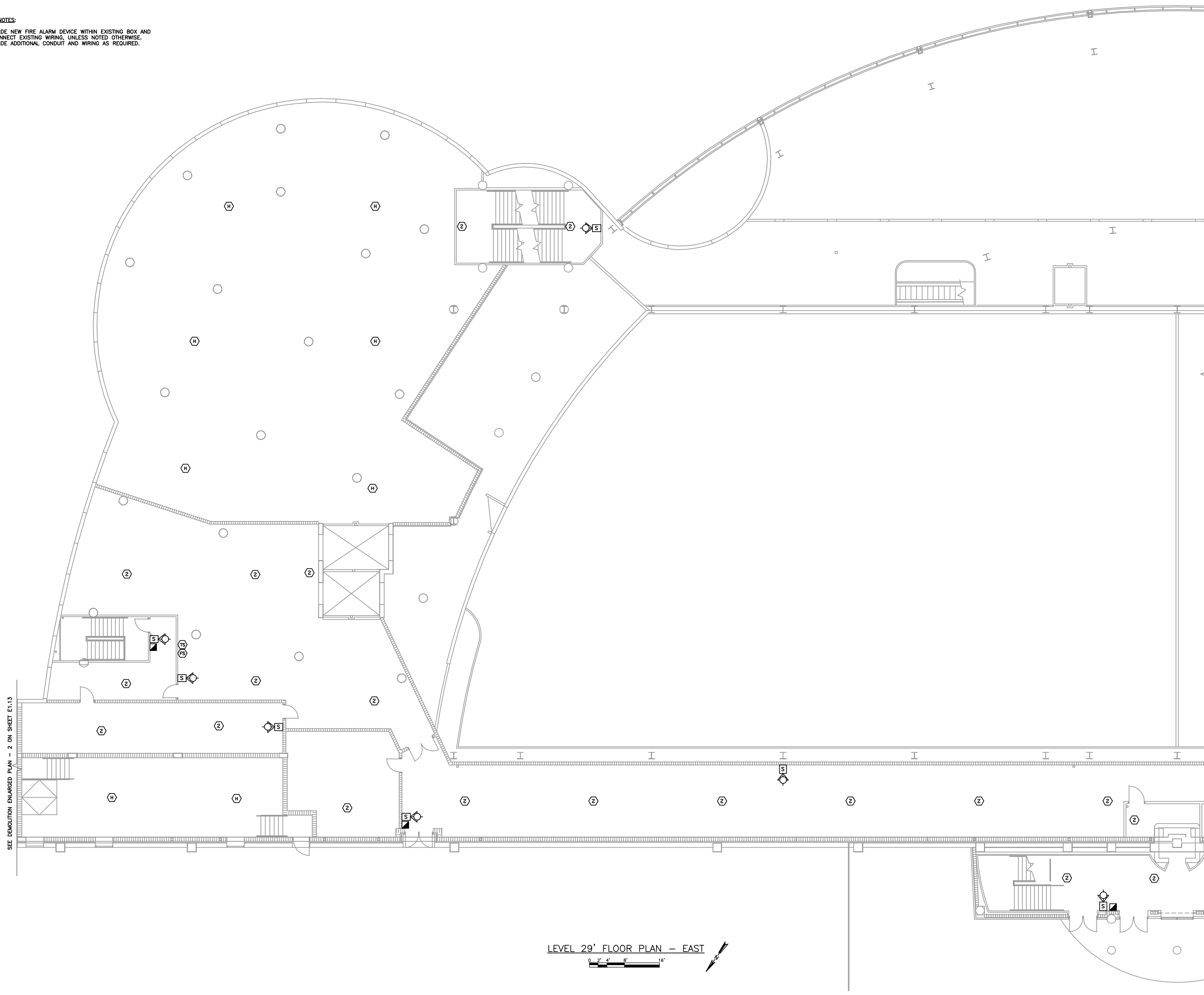
LEVEL 19' FLOOR PLAN - WEST
 MONONA TERRACE FIRE ALARM SYSTEM UPGRADE
 CITY OF MADISON
 MADISON, WISCONSIN

JOB NO.
1.020-095
 PROJECT MGR.
MATTHEW CARERROS



SHEET
E1.4

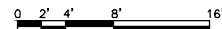
- GENERAL NOTES:**
1. PROVIDE NEW FIRE ALARM DEVICE WITHIN EXISTING BOX AND RECONNECT EXISTING WIRING, UNLESS NOTED OTHERWISE. PROVIDE ADDITIONAL CONDUIT AND WIRING AS REQUIRED.



SEE DEMOLITION ENLARGED PLAN - 2 ON SHEET E1.13

SEE SHEET E1.6 FOR CONTINUATION

LEVEL 29' FLOOR PLAN - EAST



NO.	#	DATE	REVISIONS	
			BY	DATE

LEVEL 29' FLOOR PLAN - EAST
 MONONA TERRACE FIRE ALARM SYSTEM UPGRADE
 CITY OF MADISON
 MADISON, WISCONSIN

JOB NO.
 1.020-095
 PROJECT MGR.
 MATTHEW CARERROS



SHEET
 E1.5

GENERAL NOTES:
 1. PROVIDE NEW FIRE ALARM DEVICE WITHIN EXISTING BOX AND RECONNECT EXISTING WIRING, UNLESS NOTED OTHERWISE. PROVIDE ADDITIONAL CONDUIT AND WIRING AS REQUIRED.

NO.	DATE	REVISIONS

SEE SHEET E1.5 FOR CONTINUATION

SEE DEMOLITION ENLARGED PLAN - 7 ON SHEET E1.13

LEVEL 29' FLOOR PLAN - WEST

0 2' 4' 8' 16'



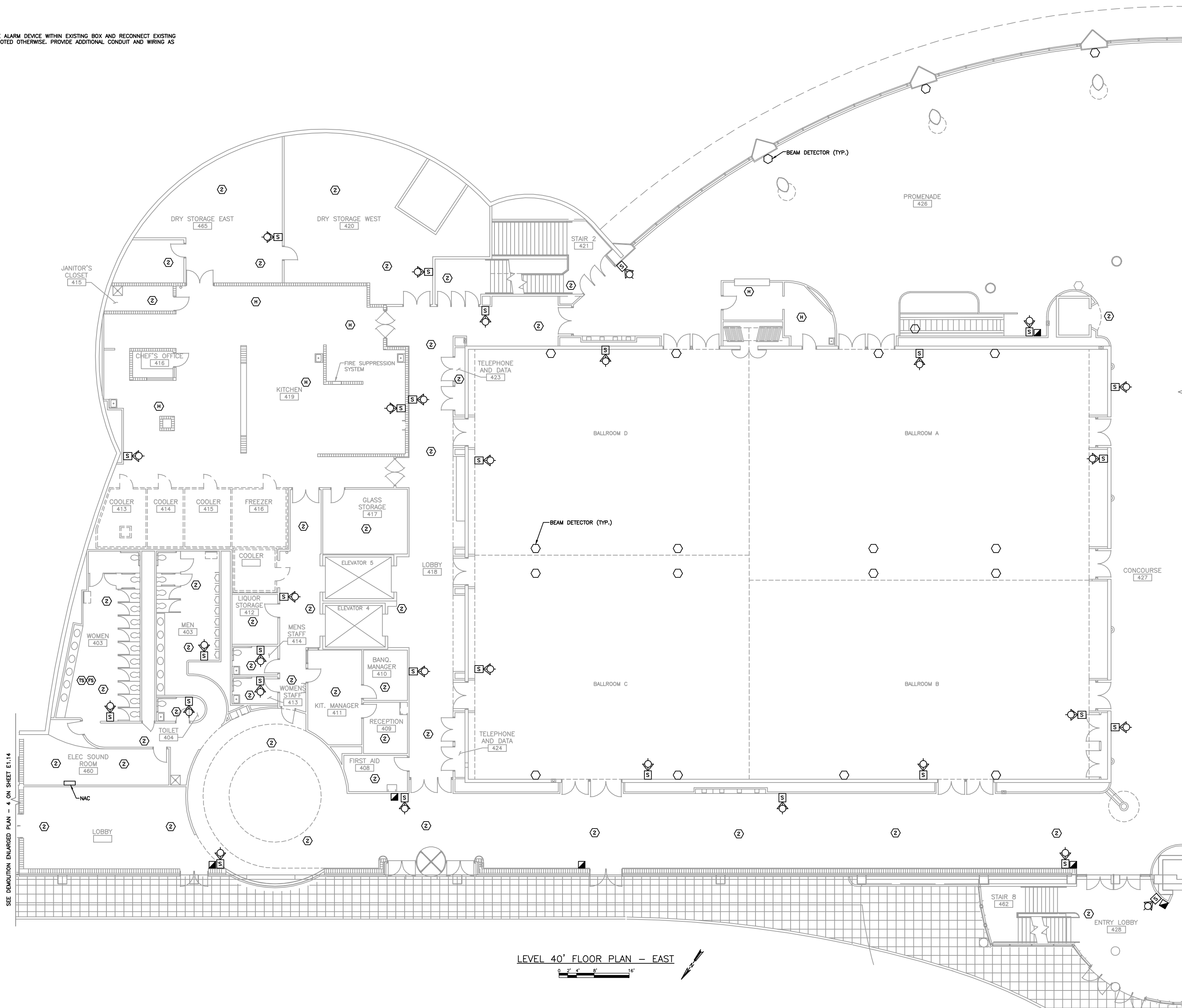
LEVEL 29' FLOOR PLAN - WEST
 MONONA TERRACE FIRE ALARM SYSTEM UPGRADE
 CITY OF MADISON
 MADISON, WISCONSIN

JOB NO.
1.020-095
 PROJECT MGR.
MATTHEW CARERROS

 SHEET
E1.6

GENERAL NOTES:

1. PROVIDE NEW FIRE ALARM DEVICE WITHIN EXISTING BOX AND RECONNECT EXISTING WIRING, UNLESS NOTED OTHERWISE. PROVIDE ADDITIONAL CONDUIT AND WIRING AS REQUIRED.



SEE SHEET E1.7 FOR CONTINUATION

LEVEL 40' FLOOR PLAN - EAST
 0 2' 4' 8' 16'

NO.	DATE	REVISIONS

LEVEL 40' FLOOR PLAN - EAST
 MONONA TERRACE FIRE ALARM SYSTEM UPGRADE
 CITY OF MADISON
 MADISON, WISCONSIN

JOB NO.
1.020-095
 PROJECT MGR.
MATTHEW CARERROS

 SHEET
E1.7

