

Transplant Timeline: 50 Years of Hope and Gratitude



UW Hospital Clinics Entry Renovation

Joint Campus Area Committee Meeting
Introductory Project Presentation
February 9, 2021

Pre-read issued February 3, 2021

Meeting Purpose: Introductory Project Presentation. Final recommendation to come at subsequent JCAC meeting

Table of Contents

- A. Vision / Mission
- B. Scope of Work
- C. Existing Context
- D. Conceptual Site Plan & Exterior Design Elements

Transplant Timeline: 50 Years of Hope and Gratitude



What Makes the UW Health Transplant Program Unique

Patients & Families

Compassionate, Customized
Patient Care

Lifelong Commitment

Emotional & Physical Needs

Environment of Care

Range of Needs & Services

Comprehensive, Multidisciplinary

Innovation, Research and

Leading-Edge Technology

Nationally Recognized Leader

One of the world's foremost
organ transplant programs

Recognized leaders in directing
the future of transplantation

// Scope of Work



Campus View



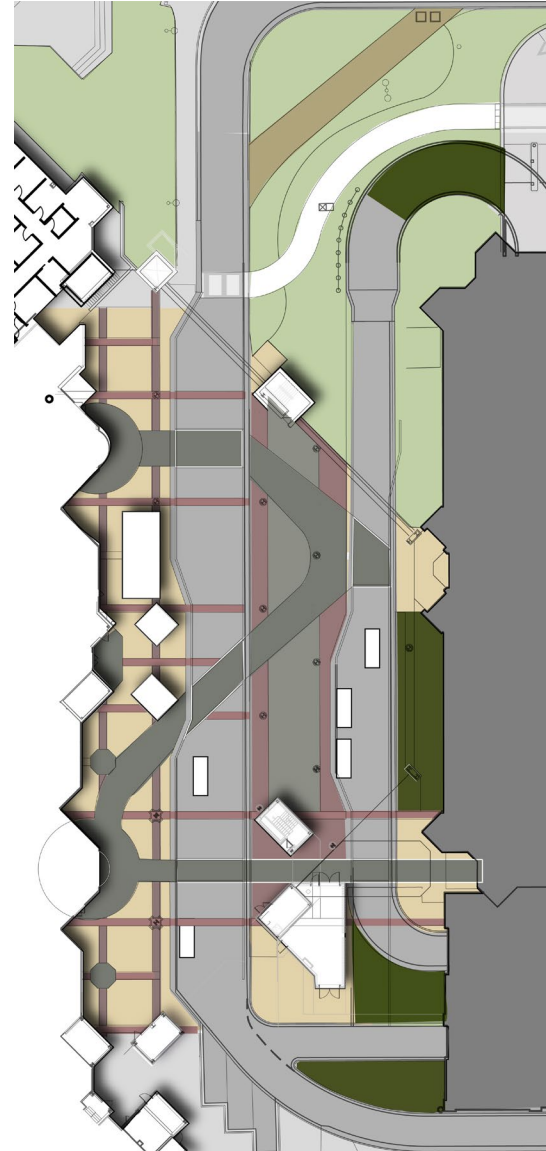
// Scope of Work



Campus View



AERIAL PHOTO



EXISTING LAYOUT

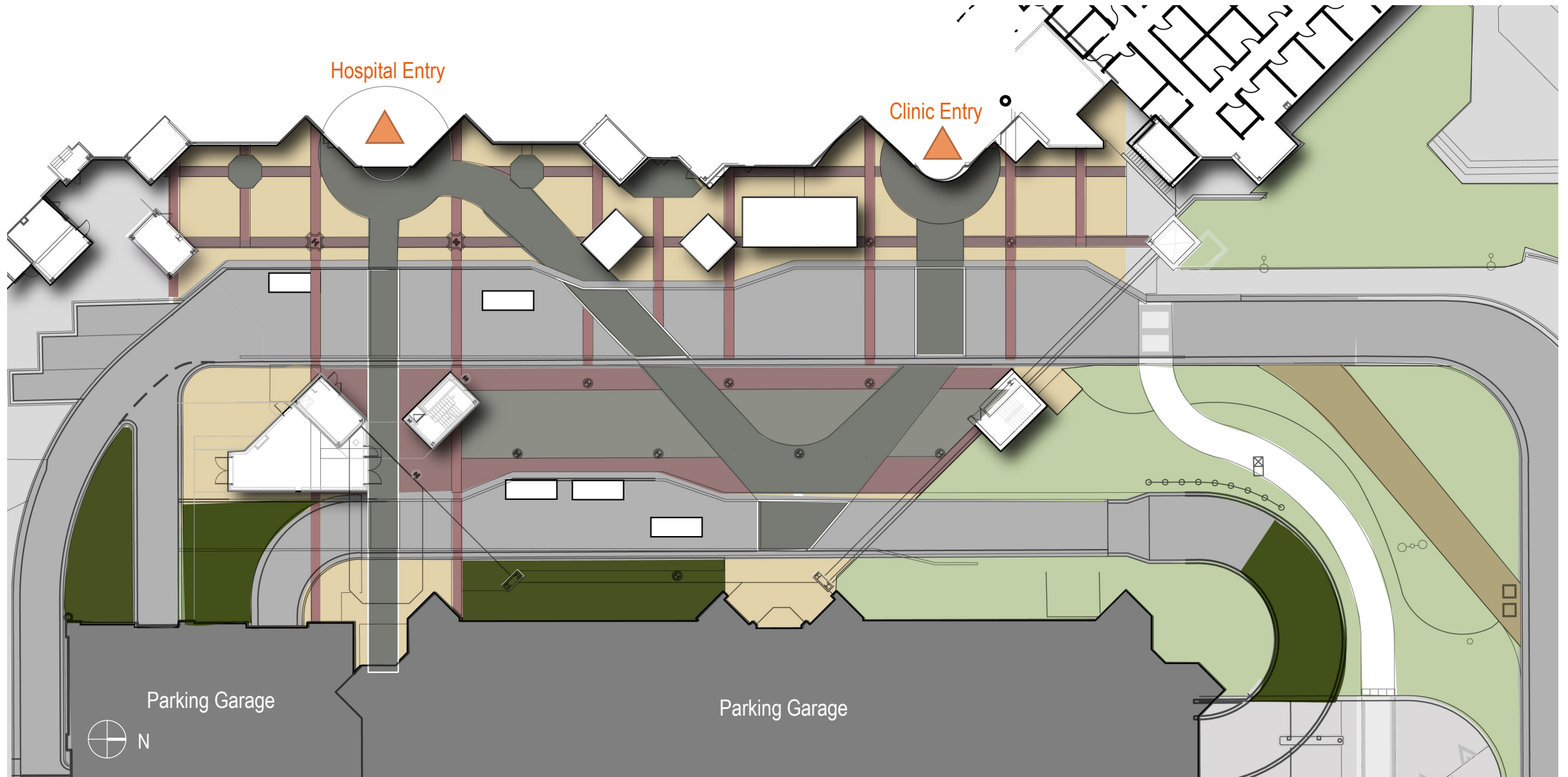


PROPOSED LAYOUT

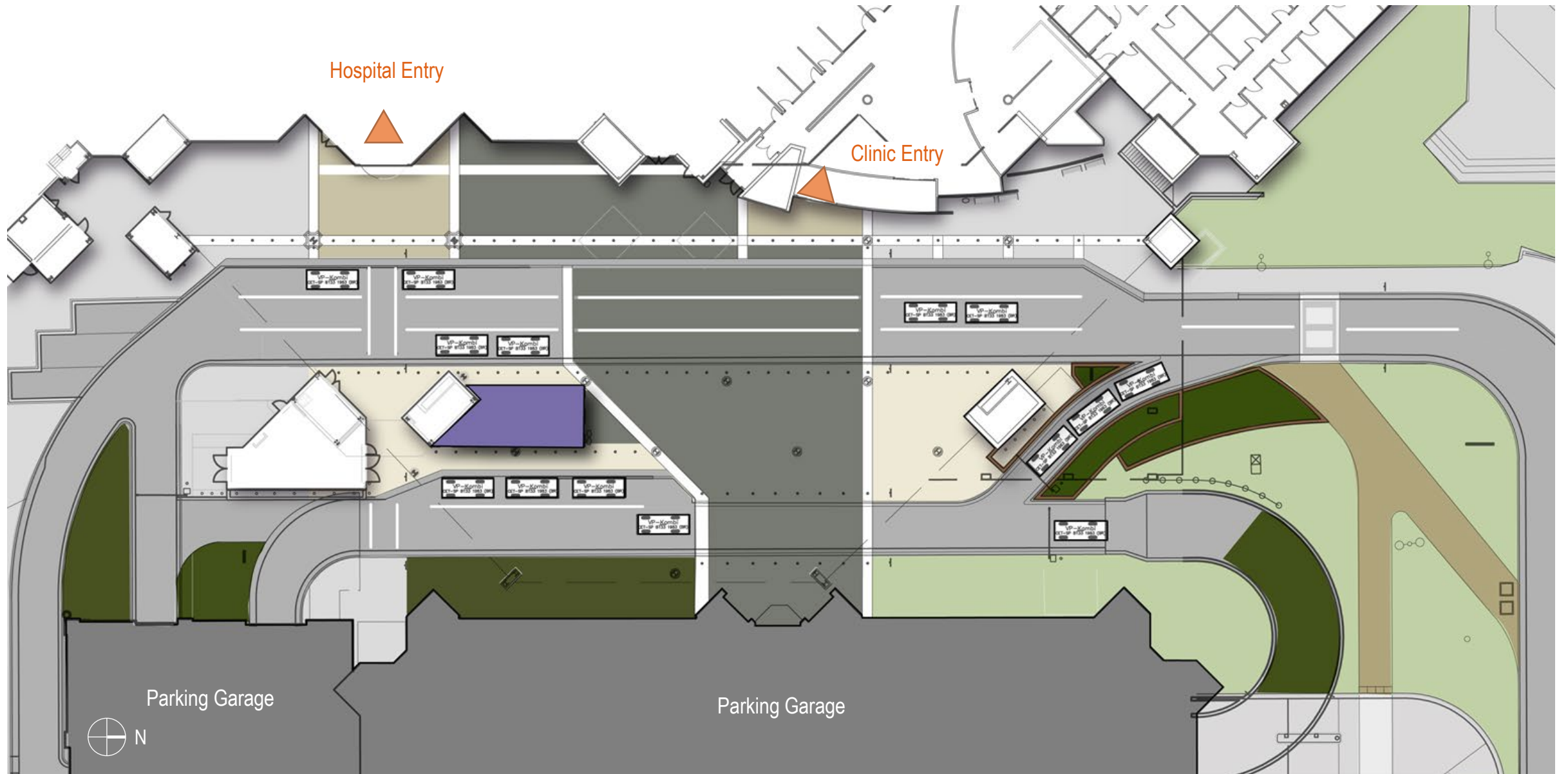
// Existing Context



// Existing Site Plan



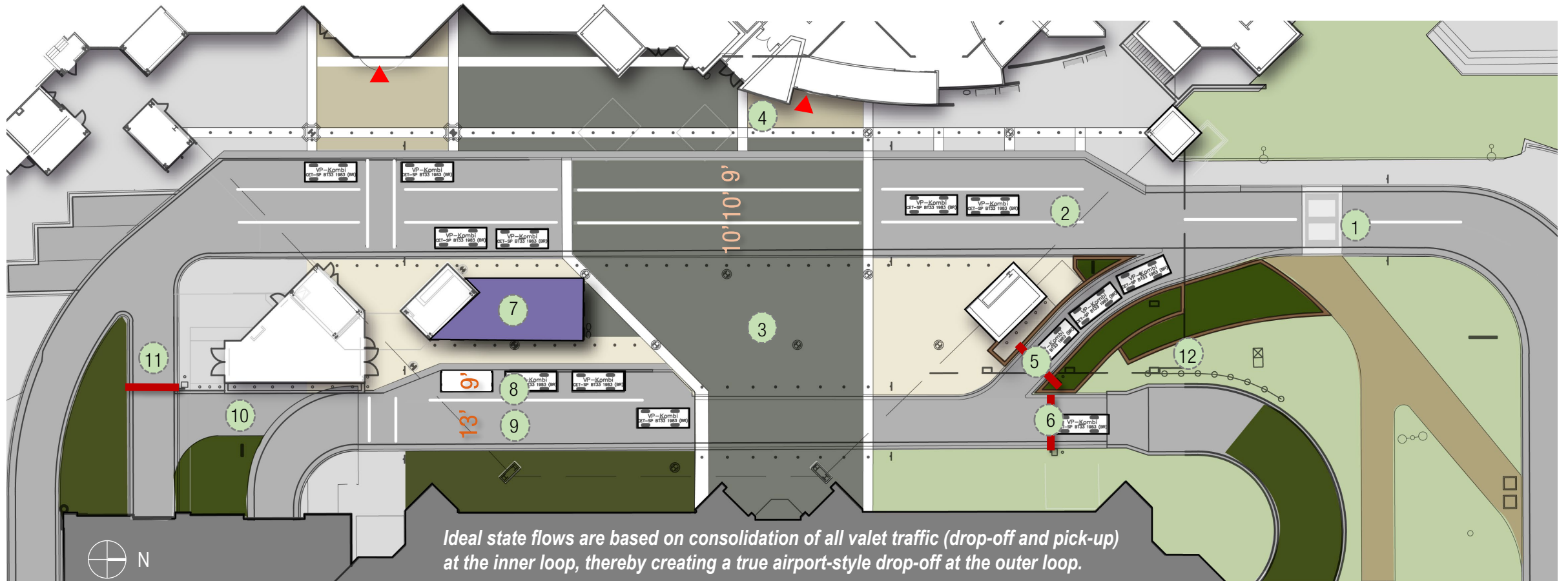
// Conceptual Site Plan



// Site Key Plan

Key Highlights

- 1 Relocated Pedestrian Connection
- 2 Airport-style Drop-off Concourse
- 3 Main Pedestrian Crosswalk from Ramp
- 4 Reconfigured Clinic Entrance
- 5 Valet Cut-through Lane w/Ticketing Gate
- 6 Traffic Calming Gate for Speed Ramp
- 7 Storage / Valet Workroom
- 8 Valet Drop-off
- 9 Valet Pick-up
- 10 Valet Cut-through to Ramp Entry
- 11 Oversize Ramp Entry w/ Gate
- 12 Extents of New Canopy and Columns



// Conceptual Canopy

Canopy design is under development



Key Highlights

- 1 Canopy fascia to be perpendicular to drive aisles – provides better opportunity for wayfinding / signage
- 2 Opportunity to reconfigure UW Health signage to be consistent with current brand standards
- 3 Canopy to cover new valet cut through

Aerial View

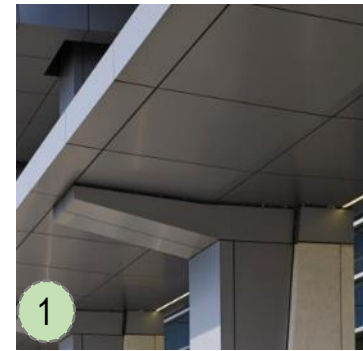
// Canopy Materials

Canopy design is under development



Entry Drive View

Material Considerations



1
Metal Panel Soffit / Roof Panels



2
Painted Structural Columns with Metal Panel Base Wraps



3
Updated UW Health Signage



4
Perforated Metal Screen Panels with Accent Lighting

// Conceptual Lobby Plan



Key Highlights

- 1 Pedestrian Crosswalk from Parking Ramp
- 2 Vehicular Drop-off – Expanded / Extended
- 3 Staff Entry
- 4 Heated Wheelchair Storage Enclosure (Exterior)
- 5 Visitor Entry Vestibule
- 6 Greeter
- 7 Guest Services
- 8 Transplant Clinic Entry

// Conceptual Rendering – Clinics Entrance

Exterior design is under development



UW Clinics Entrance from Across Drive Aisle



Thank You!

Final recommendation to come at subsequent JCAC meeting